

**GENELEC®
8030A Compact
Bi Amped
Reference Monitor**



GENELEC 8030A Compact Bi Amped Reference Monitor Instruction Manual

[Home](#) » [GENELEC](#) » GENELEC 8030A Compact Bi Amped Reference Monitor Instruction Manual 

Contents

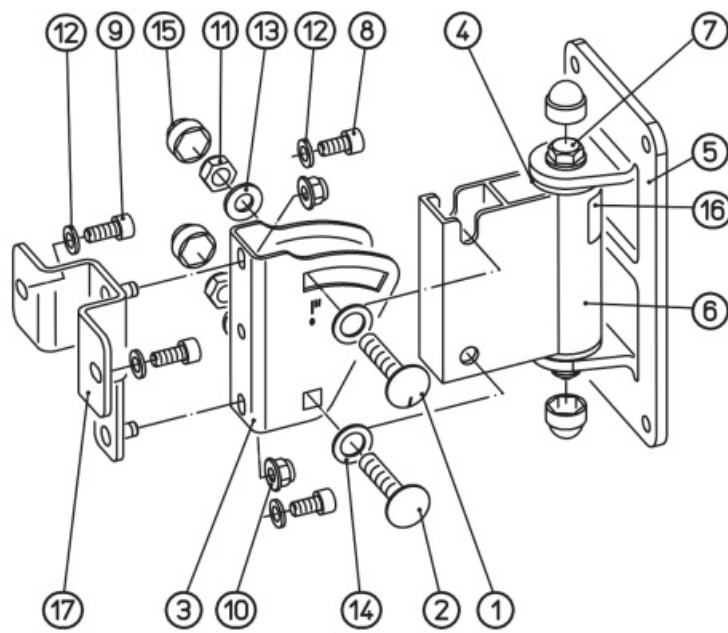
- 1 GENELEC 8030A Compact Bi Amped Reference Monitor
- 2 PARTS DESCRIPTION
- 3 Separate swivel joint from wall bracket
- 4 wall bracket fastening
- 5 Wall mount options
- 6 Installation
- 7 Settings
- 8 Dimensions
- 9 Safety instructions
- 10 Specifications
- 11 FAQ
- 12 Documents / Resources
 - 12.1 References

GENELEC®

GENELEC 8030A Compact Bi Amped Reference Monitor

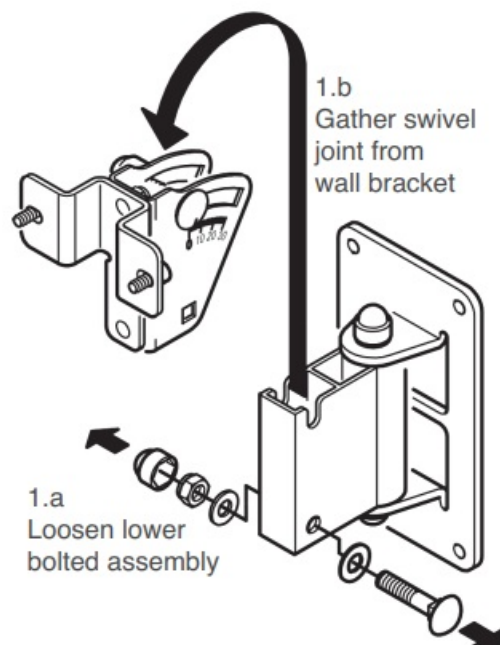


PARTS DESCRIPTION

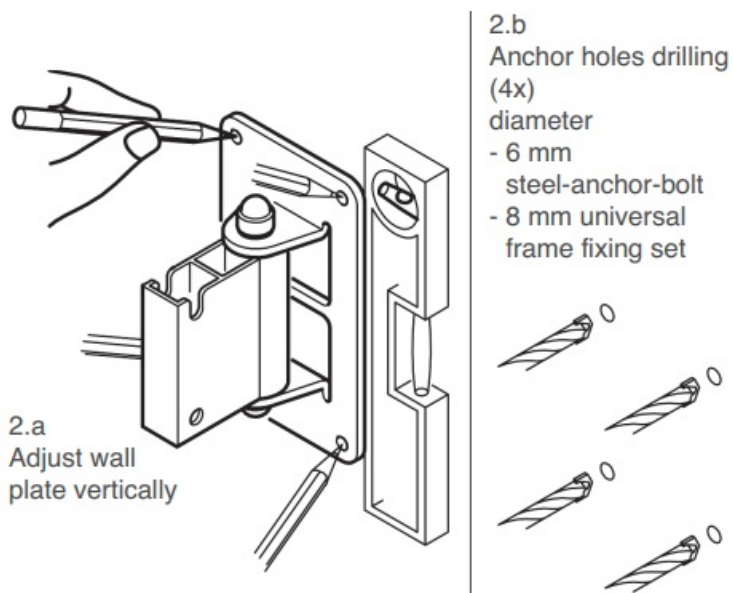


Pos.	Qty.	Description	Dimensions
1	1	Carriage bolt imprinted	M8x40
2	1	Carriage bolt	M8x40
3	1	Swivel bracket	67,3×28,5x2x87
4	2	Damping washer	ø30×7,9
5	1	Wall mount	90×41,5×190
6	1	Adjustable bracket	78,5x30x80
7	1	Hexagonal bolt	M8x110
8	2	Cylinder head screw	M6x12
9	2	Cylinder head screw	M6x14
10	2	Hexagon nut with flange	M6
11	3	Locking nut	M8
12	4	Washer	ø12×1,6xø6,4
13	4	Washer	ø17×1,6xø8,4
14	2	Washer	ø18xø11,2×1,2
15	4	Protective cap M8	ø17×15 SW13
16	1	Nameplate	40×22
17	1	T-adapter plate	87x36x90

Separate swivel joint from wall bracket



wall bracket fastening

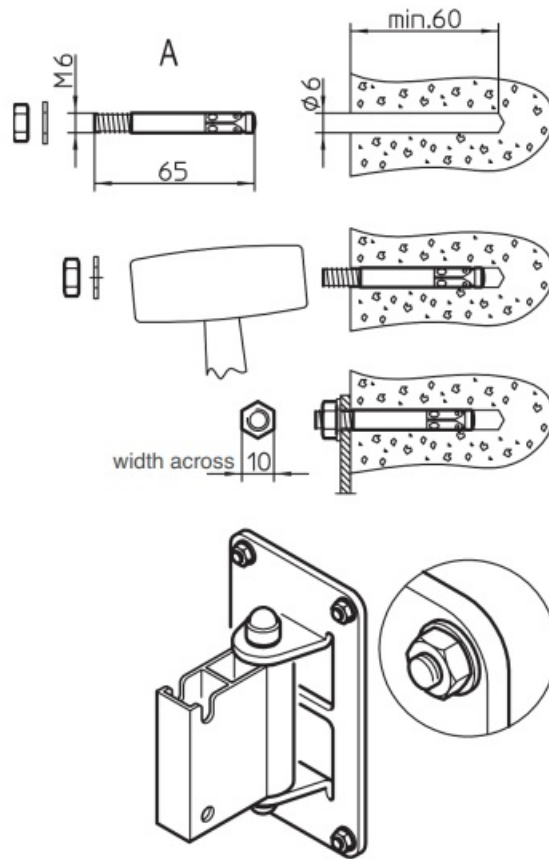


Thank you very much for choosing this product. Please read and follow these instructions carefully. They inform you about all the important steps regarding assembly and handling. We recommend that you keep them for future reference.

Wall mount options

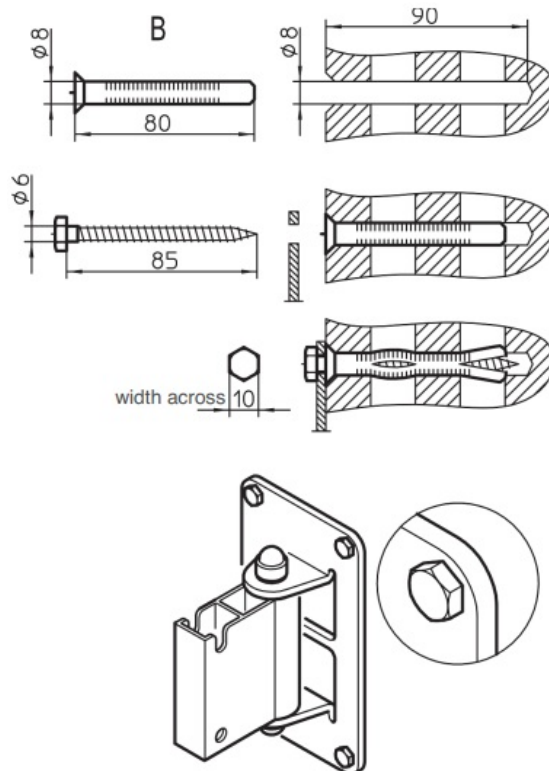
Concrete wall – e.g.: steel-anchor-bolt M6 x 65 mm

- drill and blow out the hole, place anchor,
- wall bracket and washer, tighten hexnut



Perforated bricks – e.g.: unsiversal frame fixing set 8 x 80 mm

- drill, countersink and blow out hole, place anchor
- and bracket, fix hexagon head wood screw



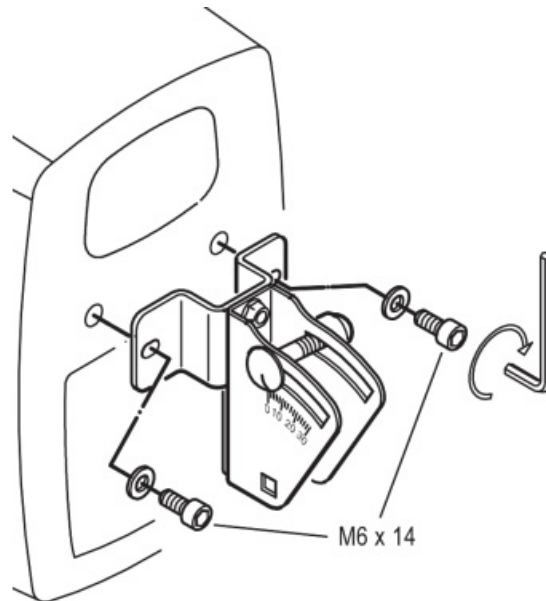
Injection-molded-anchor

Without sieve bushing for concrete wall – with sieve bushing for perforated bricks / optional with threaded bolt M6 or threaded bushing M6

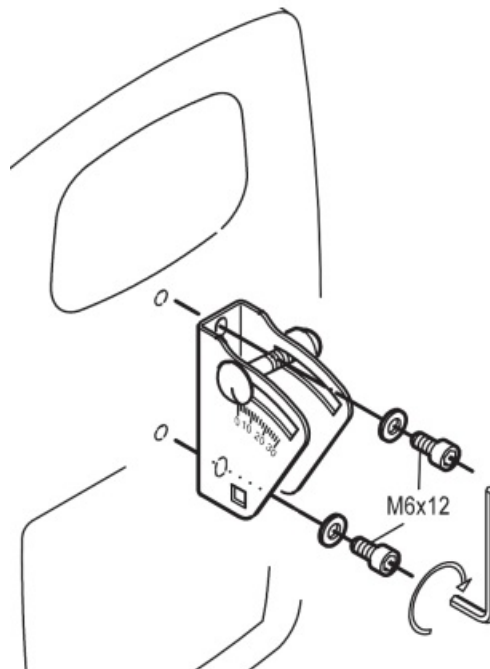
- **Advantages:** fixing without pressure, enables repeated mounting, capable for diverse wall materials
- **Advantages:** (please notice instructions GENELEC Oy of anchor manufacturers).

Installation

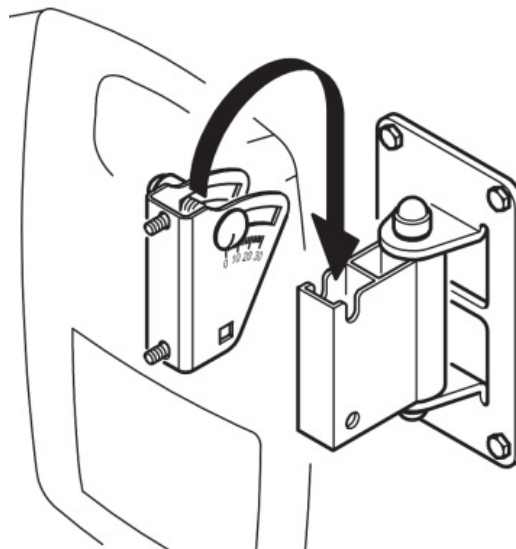
- Bolt to T-Adaptor for:
 - vertical mounting
 - (8030A)
 - horizontal mounting
 - (8040A, 8050A)



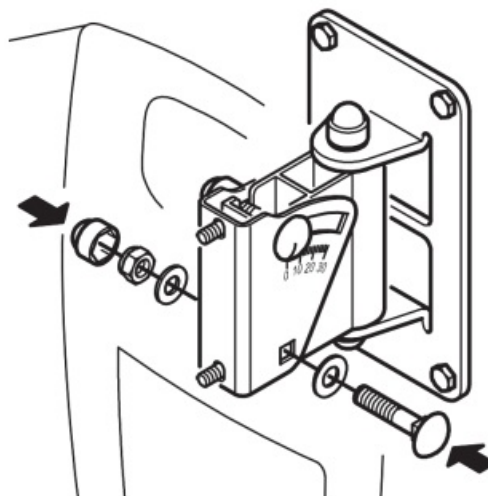
- (alternative) Remove T-Adaptor for:
 - horizontal mounting
 - (8030A)
 - vertical mounting
 - (8040A, 8050A)
 - with swivel joint



- Replace the swivel joint (with mounted speaker) into the wall bracket.

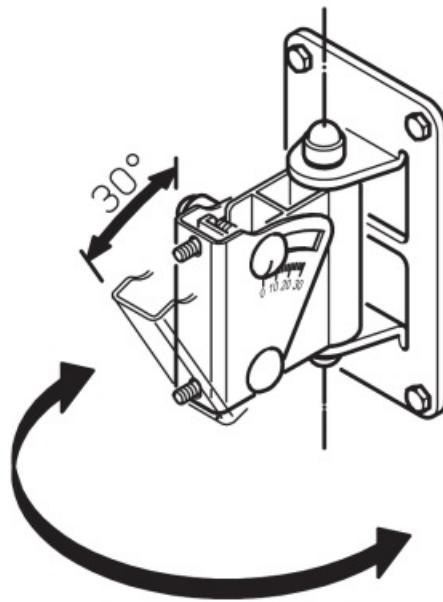


- Secure the swivel joint to the wall bracket by tightening the lower bolted assembly.



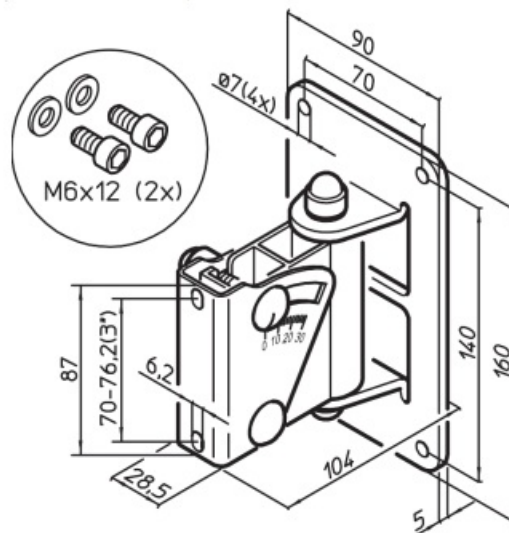
Settings

- Continuously adjustable up to 30°, by fixing the upper bolted assembly.

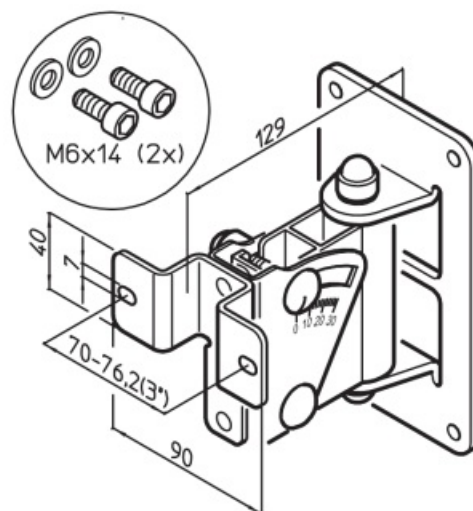


Dimensions

- **Weight:** 1.2 kg vertical hole pattern



- vertical hole pattern



Safety instructions

- Max. load capacity: 15 kg.
- Use four anchors per wall bracket.
- Choose a position and mounting method compliant with the local building codes and regulations.
- For use only by trained installers.
- For use only at proper walls with adequate anchors
- (see 3. A, B, C; not included in delivery).
- Not suitable are fragile walls. Beware of power supply lines and water conduits. In case ask an expert.
- Inspect bolted assemblies periodically.
- For indoor use only.

Specifications

- **Max. Load Capacity:** 15 kg
- **Weight:** 1.2 kg
- Vertical Hole Pattern
- Horizontal Hole Pattern

FAQ

Q: What is the maximum load capacity of the wall mount?

A: The wall mount can support a maximum load of 15 kg.

Q: Can the wall mount be used outdoors?

A: No, the wall mount is designed for indoor use only.

Q: Are detailed mounting instructions provided with the product?

A: Yes, detailed mounting instructions are included in the packaging of the product.

Documents / Resources



[GENELEC 8030A Compact Bi Amped Reference Monitor](#) [pdf] Instruction Manual
24475-017-55, 24475-017-57, 8030A Compact Bi Amped Reference Monitor, 8030A, Compact Bi Amped Reference Monitor, Amped Reference Monitor, Reference Monitor, Monitor

References

- [G World Leader in Studio Monitors - Genelec.com](#)
- [User Manual](#)

Manuals+, Privacy Policy

This website is an independent publication and is neither affiliated with nor endorsed by any of the trademark owners. The "Bluetooth®" word mark and logos are registered trademarks owned by Bluetooth SIG, Inc. The "Wi-Fi®" word mark and logos are registered trademarks owned by the Wi-Fi Alliance. Any use of these marks on this website does not imply any affiliation with or endorsement.