



# genaray SSL-50B 50 In. Bi Color Soft Strip LED Instructions

[Home](#) » [genaray](#) » genaray SSL-50B 50 In. Bi Color Soft Strip LED Instructions 

## Contents

- 1 [genaray SSL-50B 50 In. Bi Color Soft Strip LED](#)
- 2 [Product Information](#)
  - 2.1 [Specifications](#)
- 3 [Product Overview](#)
- 4 [Product Usage Instructions](#)
- 5 [FAQ](#)
- 6 [INTRODUCTION](#)
- 7 [PRODUCT OVERVIEW](#)
- 8 [ADJUSTING THE LIGHT](#)
- 9 [PRODUCT SPECIFICATIONS](#)
- 10 [ONE-YEAR LIMITED WARRANTY](#)
- 11 [Documents / Resources](#)
  - 11.1 [References](#)



**genaray SSL-50B 50 In. Bi Color Soft Strip LED**



## Product Information

### Specifications

- **Model:** SSL-50B
- **Length:** 50 inches
- **LED Type:** Bi-color Soft Strip

### Product Overview

The SSL-50B is a 50-inch bi-color soft strip LED light. It features a 5/8-inch baby receiver, ratchet handle, lollipop locking knob, release lever, mounting studs, V-mount adapter with touch-connect strap, front and back diffuser, mounting plate, barndoors, channel indicator, channel selector, colour temperature indicator, colour temperature up/down controls, dimmer control box, battery power indicator, brightness indicator, brightness up/down controls, battery contacts, battery release button, power output cable, V-mount battery slot, hanger loop, 3-way power switch, D-tap power socket, antenna port, and 4-pin XLR input.

### Product Usage Instructions

#### Mounting the SSL-50B

To mount the SSL-50B, follow these steps:

1. Close the barn doors and place the light facedown on a flat surface.
2. Align the lollipop mount with the mounting plate and insert the studs into the mounting plate holes.
3. Make sure the lollipop mount is flush with the mounting plate and rotate the lollipop mount a quarter-turn clockwise until it clicks into place.

To remove the lollipop mount, pull the release lever and rotate the mount counterclockwise.

## **Mounting the SSL-50B to a Light Stand**

To mount the SSL-50B to a light stand, follow these steps:

1. Make sure the ratchet handle is tightened before mounting the SSL-50B.
2. Loosen the locking knob and place the 5/8-inch receiver on a light stand.
3. Tighten the locking knob until secure.
4. Loosen the ratchet handle to adjust the light's tilt and swivel. Once the light is aimed, retighten the ratchet handle and make sure the fixture is secure.

## **Using the SSL-50B with AC Power**

To power the SSL-50B using AC power, follow these steps:

1. Connect the AC power adapter to the control box with the 4-pin XLR cable.
2. Use the power cable to plug the AC power adapter into an outlet.
3. To connect the power output cable to the SSL-50B's 4-pin connector, align the two connectors and press them together. Then tighten the locking collar until secure.

**Note:** The connectors should easily attach. Do not use force to join them together. Hold one connector still and rotate the other while gently pushing them together until it seats in place, then tighten the collar.

## **Moving the AC Adapter Safely Out of the Way**

To move the AC adapter safely out of the way, follow these steps:

1. Wrap the touch-connect strap around the AC adapter.
2. Insert the V-mount adapter into the V-mount slot of the control box until it clicks into place.
3. Once the AC adapter is secured to the control box, use the hanger loop to hang the control box on a hook or on your light stand.

## **FAQ**

### **Q: Can the SSL-50B be used with different voltages?**

A: Yes, the SSL-50B is a multi-voltage fixture capable of running on 100 to 240 V, 50/60 Hz. However, you will need to use a plug adapter (sold separately) if you want to use it with other voltages.

### **Q: How do I remove the lollipop mount?**

A: To remove the lollipop mount, pull the release lever and rotate the mount counterclockwise.

### **Q: How do I adjust the light's tilt and swivel?**

A: Loosen the ratchet handle to adjust the light's tilt and swivel. Once the light is aimed, retighten the ratchet handle and make sure the fixture is secure.

### **Q: How do I connect the power output cable to the SSL-50B?**

A: Align the two connectors of the power output cable and SSL-50B's 4-pin connector, press them together, and then tighten the locking collar until secure.

## **INTRODUCTION**

THANK YOU FOR CHOOSING GENARAY The Genaray SSL-50B is a bi-color strip LED that provides

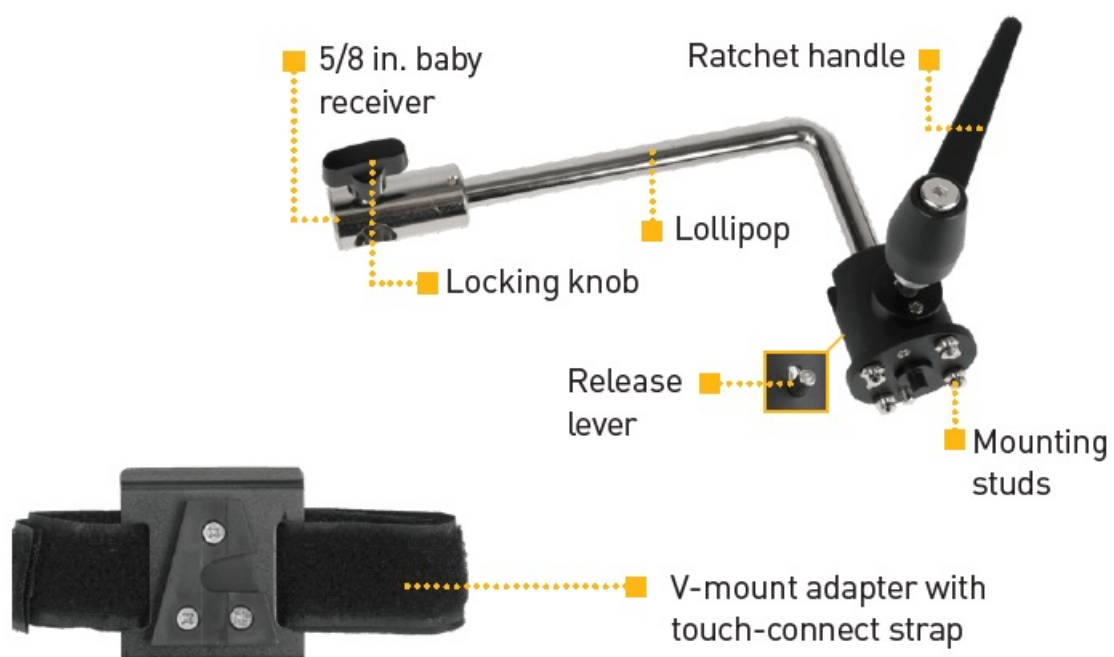
continuous, even illumination along its entire 50-inch length. In the studio, it's perfect for lighting full-length portraits, headshots, and product photography. It also excels as a background or accent light and is perfect as a hair light for individual or group shots. The bright 400-LED array has an integrated diffuser for a soft wraparound beam that eliminates multiple shadows. Stepless dimming from 100% to 1% provides precise control for a full 6-stop range. The SSL-50B's integrated full-length barn doors can cut the beam to a very narrow strip, which gives precise control over light and shadow on subjects or backgrounds.

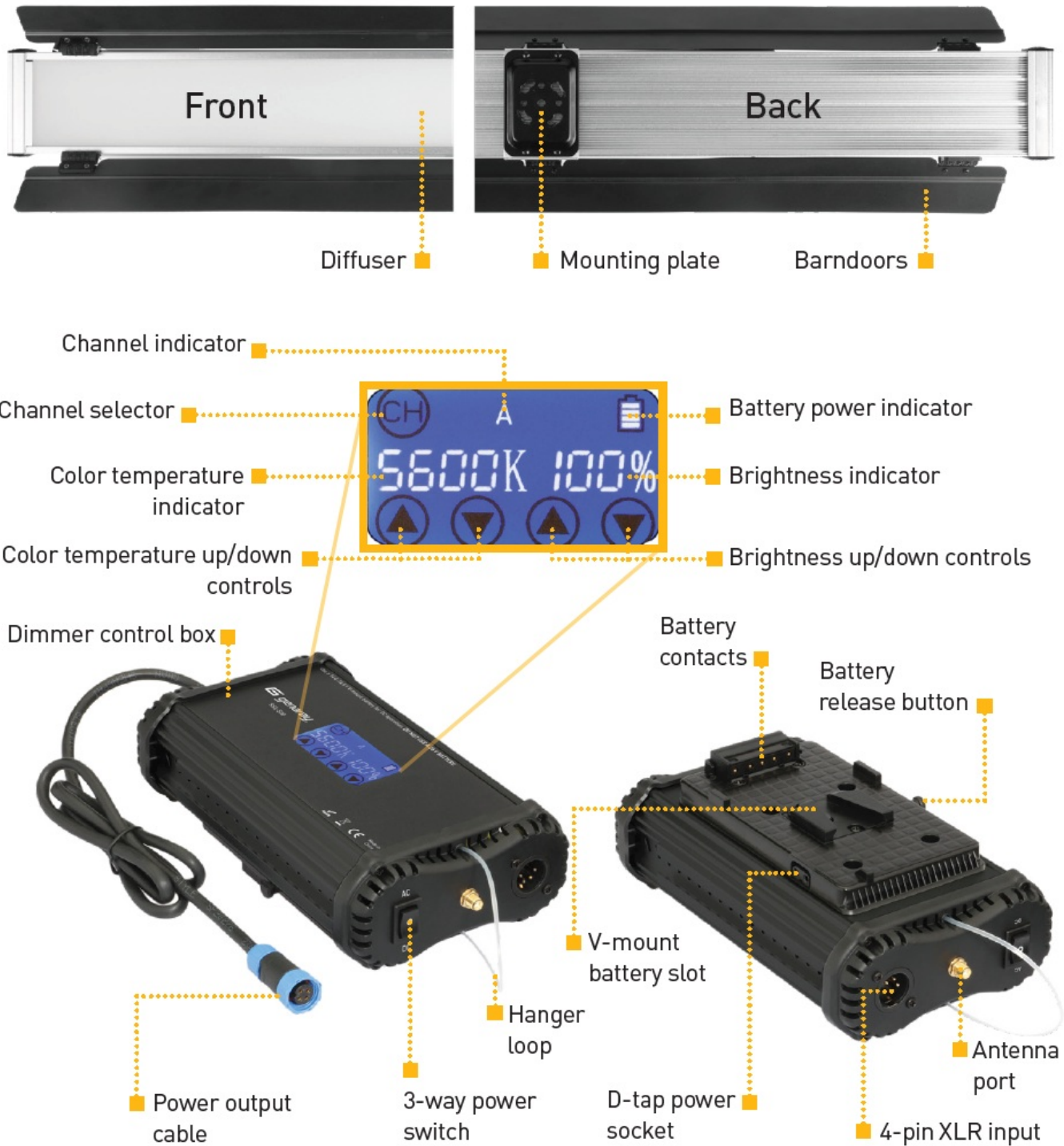
## PRECAUTIONS



- Please read and follow these instructions, and keep this manual in a safe place.
- Keep this unit away from water and any flammable gases or liquids.
- Make sure the unit is powered off when plugging it into a power source.
- Use only the correct, recommended voltage.
- Do not attempt to disassemble or repair the equipment—doing so will void the warranty, and Genaray will not be responsible for any damage.
- Handle the unit with care.
- Do not stare directly at the lights when they are powered on.
- Clean the unit with only a soft, dry cloth.
- Keep this unit away from children.
- Use only parts provided by the manufacturer.
- Make sure the item is intact and that there are no missing parts.
- All images are for illustrative purposes only.

## PRODUCT OVERVIEW





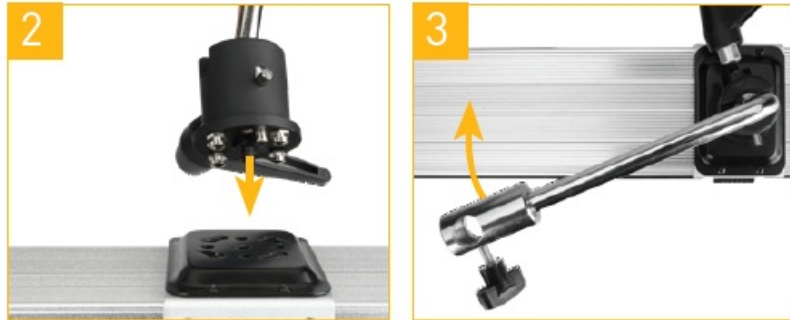
## CONTENTS INCLUDE

- Light fixture
- Control box with V-mount
- Power supply
- Lollipop mount
- Power cable
- V-mount strap
- Antenna
- Carry case with shoulder strap

## MOUNTING THE SSL-50B

### ATTACHING THE LOLLIPOP MOUNT

1. Close the barn doors, and place the light facedown on a flat surface.
2. Align the lollipop mount with the mounting plate, and insert the studs into the mounting plate holes.
3. Make sure the lollipop mount is flush with the mounting plate, and rotate the lollipop mount a quarter-turn clockwise until it clicks into place. To remove the lollipop mount, pull the release lever, and rotate the mount counterclockwise.



### MOUNTING THE SSL-50B TO A LIGHT STAND

1. Make sure the ratchet handle is tightened before mounting the SSL-50B.
2. Loosen the locking knob, and place the 5/8-inch receiver on a light stand.
3. Tighten the locking knob until secure.
4. Loosen the ratchet handle to adjust the light's tilt and swivel. Once the light is aimed, retighten the ratchet handle, and make sure the fixture is secure.



### USING THE SSL-50B WITH AC POWER

#### Important

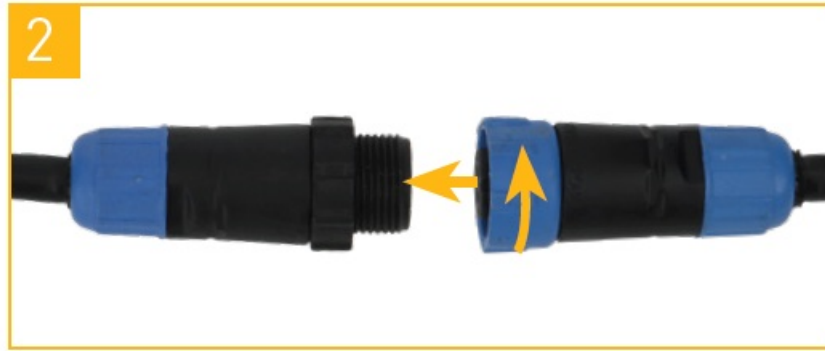
The SSL-50B is a multivoltage fixture capable of running on 100 to 240 V, 50/60 Hz. The included cable has a 120 V, 60 Hz plug. To use this fixture with other voltages, you must use a plug adapter (sold separately).

1. Connect the AC power adapter to the control box with the 4-pin XLR cable, and then use the power cable to plug it into an outlet.
2. To connect the power output cable to the SSL-50B's 4-pin connector, align the two connectors, and press them together. Then tighten the locking collar until secure.

#### Important!

The connectors should easily attach. Don't use force to join them together. Hold one connector still and rotate the other while gently pushing them together until it seats in place, then tighten the collar.

3. Set the power switch to AC.



## TO MOVE THE AC ADAPTER SAFELY OUT OF THE WAY

1. Wrap the touch-connect strap around the AC adapter.
2. Insert the V-mount adapter into the V-mount slot of the control box until it clicks into place.
3. Once the AC adapter is secured to the control box, use the hanger loop to hang the control box on a hook or on your light stand.



## USING THE SSL-50B WITH BATTERY POWER

### Note

Make sure to use batteries rated for 120 W or greater.

1. When attaching a V-mount battery, make sure the power switch is in the off position, and disconnect the AC adapter so the control box is not plugged into a wall outlet.
2. Align the battery terminals with the contacts in the battery mount.
3. Place the battery down into the mount, and push the battery toward the contacts until it clicks into place.
4. Set the power switch to DC. To connect a Gold Mount battery to the control box, use a D-tap power cable (not included).





## ADJUSTING THE LIGHT

### Brightness

The brightness control buttons on the control box can adjust the output from 1% to 100%. Tap the up/down buttons to adjust the brightness in 1% increments, or touch and hold to adjust rapidly.

### Colour Temperature

The SSL-50B has a colour temperature range of 3000 to 5600 K. Tap the colour temperature up and down buttons to change the color temperature in 50 K increments. Touch and hold the buttons to adjust rapidly.

### Barndoors

Adjust the barndoor flaps to aim or shape the beam and contain the light spill.

### Important!

Do not operate the light while the barn doors are closed.

## WIRELESS OPERATION

The SSL-50B's control box has an integrated transmitter and receiver. The Genaray SSL-RC remote (sold separately) can control multiple SSL-series lights. Refer to the SSL-RC user manual for setup and operation instructions. You can also control multiple lights from the control box of the SSL-50B. First screw the antenna into the antenna port on each control box.

### Mutual Control (multiple lights set to the same channel)

- Any control box will set the brightness level for all the lights. Individual Control (multiple lights set to different channels)
- Use the channel selector buttons on one control box to adjust the brightness of lights set to each channel.

## PRODUCT SPECIFICATIONS

- **LED Count:** 400
- **Color Temperature:** 3000 to 5600 K
- **Dimming:** 1% to 100%
- **Light Intensity @ 3 ft.:** Bi-color: 3200 K: (1660 lx) 4400 K: (1860 lx) 5600 K: (1740 lx) Daylight: 5600 K: (1740 lx)



- **Coverage:** 75°
- **CRI:** 96.2 (5600 K), 95.9 (4400 K), 97.9 (3200 K)
- **TLCI:** 98 (5600 K), 98 (4400 K), 98 (3200 K)
- **Max Power Consumption:** 80 W
- **AC Operating Voltage:** 100 to 240 V, 50/60 Hz
- **DC Operating Voltage:** 16.8 V, 8 A
- **Bulb Life:** 50,000 hr.
- **Battery:** V-mount

**Material:** Metal chassis and barndoors

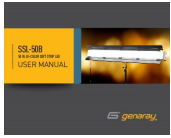
- **Power Cord Length:**
  - AC cord: 114 in. (2.9 m)
  - AC adapter cord: 44 in. (111.8 cm)
  - Adapter DC cord: 37.5 in. (95.2 cm)
  - DC cord: 43 in. (109.2 cm)
- **Weight :**
  - Light: 8.5 lb. (3.9 kg)
  - Control box: 1.9 lb. (862 g)
  - AC adapter: 0.9 lb. (443 g)
  - Carry case: 6 lb. (2.7 kg)
- **Dimensions (H x W x D):**
  - **Light:** 50 x 4.2 x 1.9 in. (127 x 10.7 x 4.9 cm)
  - **Control box:** 2.5 x 4.7 x 8 in. (6.3 x 12 x 20.3 cm)
  - **AC adapter:** 1.5 x 2.4 x 6 in. (3.8 x 6.1 x 15.2 cm)
  - **Carry case:** 51 x 8.5 x 5.5 in. (129.5 x 21.6 x 14 cm)

## ONE-YEAR LIMITED WARRANTY

This Genaray product is warranted to the original purchaser to be free from defects in materials and workmanship under normal consumer use for a period of one (1) year from the original purchase date or thirty (30) days after replacement, whichever occurs later. Genaray's responsibility to this limited warranty shall be limited solely to repair or replacement, at Genaray's discretion, of any product that fails during normal use of this product in its intended manner and in its intended environment. Inoperability of the product or part(s) shall be determined by Genaray. If the product has been discontinued, Genaray reserves the right to replace it with a model of equivalent quality and function. This warranty does not cover damage or defect caused by misuse, neglect, accident, alteration, abuse, improper installation or maintenance. EXCEPT AS PROVIDED HEREIN, GENARAY MAKES NEITHER ANY EXPRESS WARRANTIES NOR ANY IMPLIED WARRANTIES, INCLUDING BUT NOT LIMITED TO ANY IMPLIED WARRANTY OF MERCHANTABILITY OR FITNESS FOR A PARTICULAR PURPOSE. This warranty provides you with specific legal rights, and you may also have additional rights that vary from state to state. To obtain warranty coverage, contact the Genaray Customer Service Department to obtain a return merchandise authorization ("RMA") number, and return the defective product to Genaray along with the RMA number and proof of purchase. Shipment of the defective product is at the purchaser's own risk and expense. For more information, or to arrange service, visit [www.genaray.com](http://www.genaray.com) or contact us at [info@genaray.com](mailto:info@genaray.com). © 2024 Genaray. All Rights Reserved.

---

## Documents / Resources



[genaray SSL-50B 50 In. Bi Color Soft Strip LED](#) [pdf] Instructions

SSL-50B 50 In. Bi Color Soft Strip Led, SSL-50B, 50 In. Bi Color Soft Strip Led, Color Soft Strip Led, Soft Strip Led, Strip Led

## References

- [Genaray | Lighting & Lighting Accessories](#)
- [User Manual](#)