

GemRed
81207 Digital Caliper
with Bluetooth



GemRed 81207 Digital Caliper with Bluetooth Instruction Manual

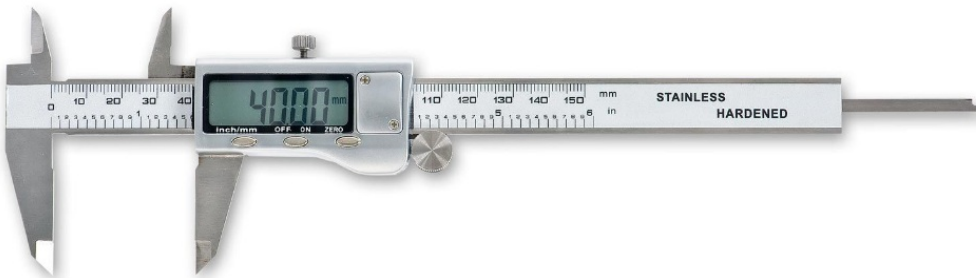
[Home](#) » [GemRed](#) » GemRed 81207 Digital Caliper with Bluetooth Instruction Manual 

Contents

- [1 GemRed 81207 Digital Caliper with Bluetooth](#)
- [2 Specification](#)
- [3 Description](#)
- [4 Maintenance Policy](#)
- [5 Documents / Resources](#)
 - [5.1 References](#)
- [6 Related Posts](#)

GemRed[®]

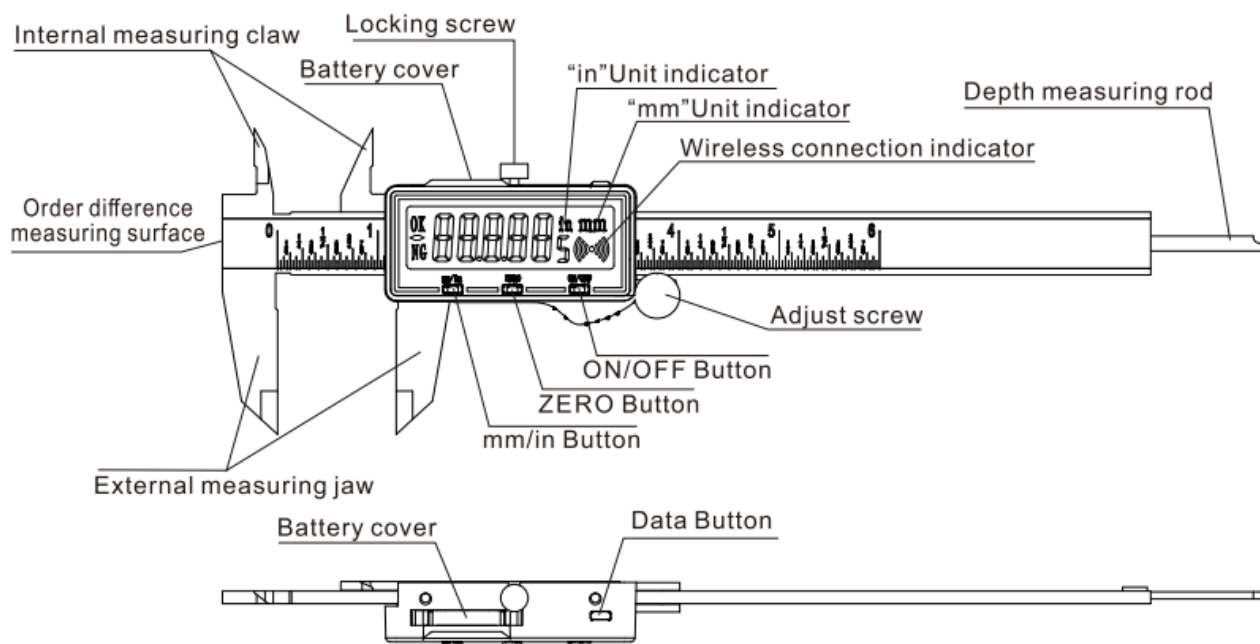
GemRed 81207 Digital Caliper with Bluetooth



Specification

Parameters	
Resolution	0.01mm
Range of measurement	0~150mm
Indication error	±0.02mm
Response speed	1m/s
Working conditions	Temperature 0~+40℃;Relative humidity<80%
Bluetooth broadcast number	GRCP110***** (“*” Each caliper is different)
Bluetooth transmission distance	Barrier-free transmission distance is not less than10m
Source of electricity	1*CR2032 battery , voltage 3.0V
Operating temperature	0℃ ~ 40℃
Transport or storage temperature	-10℃~ 60℃
Humidity at work	≤80%
Electromagnetic compatibility (EMC)	Class II
Dimension	235×77.6×15.3mm
Weight	155g

Description

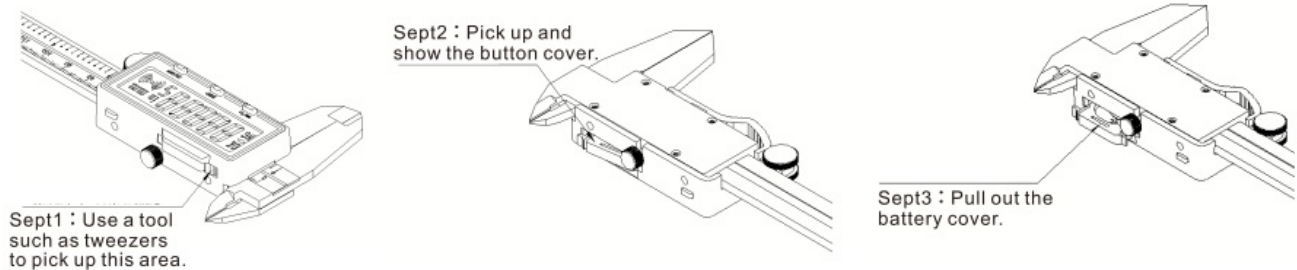


Button Function

- **(ON/OFF) button:** Short press button to switch on/off.
- **(ZERO) button:** Short press to set zero.
- **(mm/in) button:** Short press to switch units, the LCD displays the corresponding unit of measurement mm or in. Long press to toggle the direction in which want to fill in the data in the Excel. (Long press until the screen

displays"- L-", and Excel is a line input. Long press again to display "- C-" on the screen, which is now entered in the EXCEL column.) Data Acquisition Button: Long press turns unlimited transfers on; after a successful Bluetooth connection, short press to capture and upload data to the app or Excel. (Wireless transmission function is turned off by default each time the battery is reloaded)

- **Auto power off function:** When the caliper has no value change or no button operation for about five minutes, it will automatically turn off the power.



Wireless transmission function description

1. Wireless transmission function is turned off by default each time the battery is reloaded, long press the Data Button to turn on.
2. The wireless Bluetooth signal of the caliper can be connected to the APP or directly to the computer.
3. Calipers connected to the computer method: open the computer Bluetooth function, search for the caliper's Bluetooth identification number, and connection the caliper. Open the EXCEL table, short press the Data Button, the value on the caliper can be transferred to the EXCEL table. (Long press the mm/in button to select whether to fill in the data in horizontal or vertical order in the table.)

Precautions for using

1. Measuring speed must not be greater than 1m/s
2. Calipers are precision measuring instruments, and should be used to avoid impacts, falls, in order to avoid the loss of precision.
3. Calipers should be kept clean, to avoid water and other liquid substances penetrate into the caliper to affect the normal use
4. The surface of the caliper can be wiped clean with anhydrous alcohol, and organic solvents such as acetone should not be used.
5. It is prohibited to place calipers near magnetic fields or on magnetic objects. If calipers are found to be magnetic, should be demagnetized before use.
6. Calipers should be kept clean and avoid contact with liquids such as water, and when in use, batteries should be replaced when measurements appear to be flashing or not displayed. Calipers can not be applied to any part of the voltage, and can not use the electric pen engraving, in order to avoid damage to electronic.
7. This product has an automatic shutdown function, after five minutes of no operation, will automatically shut down, When not in use the caliper for a long time, recommended to remove the battery, put the caliper the attached storage box.

Safety Precautions

When using this product, please observe the specifications, functions and precautions for the use of the product as stated in the instruction manual, as exceeding the range of use may affect the safety performance of the product.

- Do not swallow the battery, risk of chemical burns
- This product contains a button cell battery. If the button battery is swallowed, it can cause serious internal injuries within 2 hours and may result in death.
- Keep new and used batteries away from children. If the battery cover does not close securely, stop using the product and keep it away from children.
- If you think the battery may have been swallowed or is anywhere inside the body, seek medical attention immediately.
- Do not expose the battery to extremely high temperatures, which may cause an explosion or leakage.
- Do not expose the battery to extremely low air pressure, which may result in explosion or fluid leakage.

Precautions to be taken when disposing of electrical and electronic equipment from EU countries separately from industrial wastes items

1. This symbol on the product or package means that the product cannot be disposed of in the same way as ordinary household waste in EU countries. In order to reduce the amount of WEEE buried in the soil and to minimize the impact on the environment, Please assist in efforts to reuse and recycle products.
2. For details on disposal methods, please contact your nearest distributor or dealer.

Simple troubleshooting methods

Phenomenons	Possible Reasons	Solutions
Display blur/flicker	Battery low voltage	Replace the battery
Does not display/cannot boot	Battery low voltage	Replace the battery
Display digital lock unchanged	Internal fault	Remove the battery, wait 1 minute, and reinstall it

Maintenance Policy

1. This product is entitled to a maintenance policy for one year from the date of shipment. Damage caused by improper use or disassembly by the user is not covered by the warranty.
2. Instruments should be returned to the factory for repair in a timely manner in the event of a malfunction.
3. We reserve the right to improve our products. Specifications and design are subject to change without notice.

Caution: The user is cautioned that changes or modifications not expressly approved by the party responsible for compliance could void the user's authority to operate the equipment.

FCC Statment

This device complies with Part 15 of the FCC Rules.

Operation is subject to the following two conditions:

1. this device may not cause harmful interference, and
2. this device must accept any interference received, including interference that may cause undesired operation.

NOTE: This equipment has been tested and found to comply with the limits for a Class B digital device, pursuant to Part 15 of the FCC Rules. These limits are designed to provide reasonable protection against harmful interference in a residential installation. This equipment generates, uses and can radiate radio frequency energy

and, if not installed and used in accordance with the instructions, may cause harmful interference to radio communications. However, there is no guarantee that interference will not occur in a particular installation.

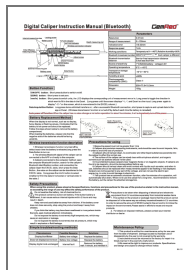
If this equipment does cause harmful interference to radio or television reception, which can be determined by turning the equipment off and on, the user is encouraged to try to correct the interference by one or more of the following measures:

- Reorient or relocate the receiving antenna.
- Increase the separation between the equipment and receiver.
- Connect the equipment into an outlet on a circuit different from that to which the receiver is connected.
- Consult the dealer or an experienced radio/TV technician for help.

FCC Radiation Exposure Statement

This equipment complies with FCC radiation exposure limits set forth for an uncontrolled environment. This transmitter must not be co-located or operating in conjunction with any other antenna or transmitter.

Documents / Resources



[GemRed 81207 Digital Caliper with Bluetooth](#) [pdf] Instruction Manual

81207, 2AGE3-81207, 2AGE381207, 81204 Series Digital Caliper with Bluetooth, 81207 Digital Caliper with Bluetooth, 81207 Caliper, Digital Caliper, Caliper, Digital Caliper with Bluetooth, Caliper with Bluetooth

References

- [User Manual](#)

Manuals+, Privacy Policy

This website is an independent publication and is neither affiliated with nor endorsed by any of the trademark owners. The "Bluetooth®" word mark and logos are registered trademarks owned by Bluetooth SIG, Inc. The "Wi-Fi®" word mark and logos are registered trademarks owned by the Wi-Fi Alliance. Any use of these marks on this website does not imply any affiliation with or endorsement.