



# Gemini GMK800 MULTIFUNCTIONAL HEALTH KETTLE User manual

[Home](#) » [gemini](#) » Gemini GMK800 MULTIFUNCTIONAL HEALTH KETTLE User manual 



## Contents

- 1 MULTI-FUNCTIONAL HEALTH KETTLEMODEL NO: GMK800600-700W
- 2 Safety Instructions
- 3 Product Review
- 4 Function Characteristics
- 5 Guideline for Use
- 6 Operation Method
- 7 Keep Warm
- 8 Other Functions
- 9 Function Timetable
- 10 Maintenance
- 11 Frequently Asked Questions
- 12 Product specifications
- 13 Documents / Resources
- 14 Related Posts

**MULTI-FUNCTIONAL HEALTH KETTLE  
MODEL NO: GMK800  
600-700W**

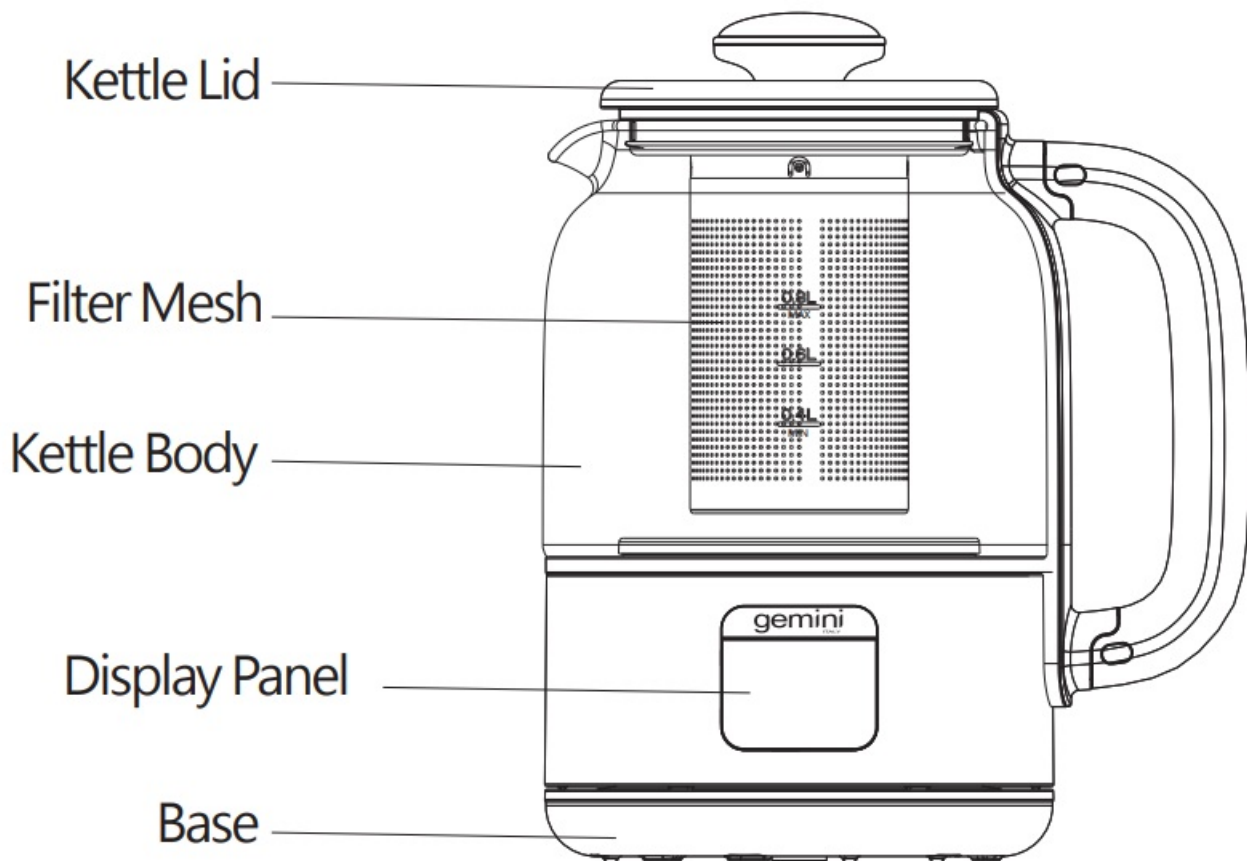
Before using your product for the first time, please read this instruction manual.

## Safety Instructions

1. Please read these instructions carefully and retain them for future reference.
2. This appliance is not intended for use by persons (including children under 8 years old) with reduced physical, sensory or mental capabilities, or lack of experience and knowledge unless they have been given supervision or instruction concerning the use of the appliance by a person responsible for their safety. Children should be supervised to ensure that they do not play with the appliance.
3. All the repairs are carried out solely by a qualified electrician. Never try to repair the appliance yourself.
4. Use this appliance solely in accordance with these instructions.
5. Never use the appliance outdoors or in a humid room.
6. Before use, ensure the power supply same as indicated at the appliances. All power supplies should have earth wired.
7. Appliances should place at a stable platform, and keep away from children.
8. Power cable is damaged, contact the service center to replace a new cable. Do not replace it by own.
9. While selecting the features, do not press the button with great force it will damage the button and control panel.
10. Any faulty operation, must switch off the power and unplug the power supply. Do not unplug while your hand is wet, it will get an electric shock.
11. Do not pull the line along sharp objects / sharp edges, crimp the wire or let it hang down. Also, put away from hot and wet conditions.
12. Do not insert any metal object into the heat dissipation holes/gaps, otherwise, it would cause electric shock.
13. Do not place the product on the surface or beside extreme heat conditions, such as the oven, etc.
14. It is forbidden to use this product on an unstable/inclined platform to avoid accidents such as injury or fire cause by products falling over.
15. Keep away from children or inexperienced person to operate this product. ,
16. While in the process, it is normal that the pot body is always hot when pouring water out, please lift the pot by holding the handle. Do not touch the pot body with bare hands, otherwise will get hurt easily.
17. Please keep the surface of the heating plate clean. After using it for a period of time, please clean the dirt on the surface of the heating plate.
18. The product will generate steam when it is working. It is easy to cause burns from the steam port. Please be careful while using it.
19. Be careful to let the liquid to flow into the product during cleaning, and to avoid danger do not allow the power cord, plug, main body, etc. to dip in the water.
20. If the product is dry burning, please add water to the pot or unplug the power supply. At this time, do not touch the heater with your hands to avoid scalding.
21. After use, there is residual heat in the body and heating plate. Be careful of scalding.
22. Please keep the surface of the heating plate clean. After using it for a period of time, the dirt on the surface of the heating plate and the scale on the inner wall of the pot must be cleaned in time.

This product is only suitable for household use.

## **Product Review**



Notice: This picture is for reference only, assemblies may be different from the picture.

### Function Characteristics

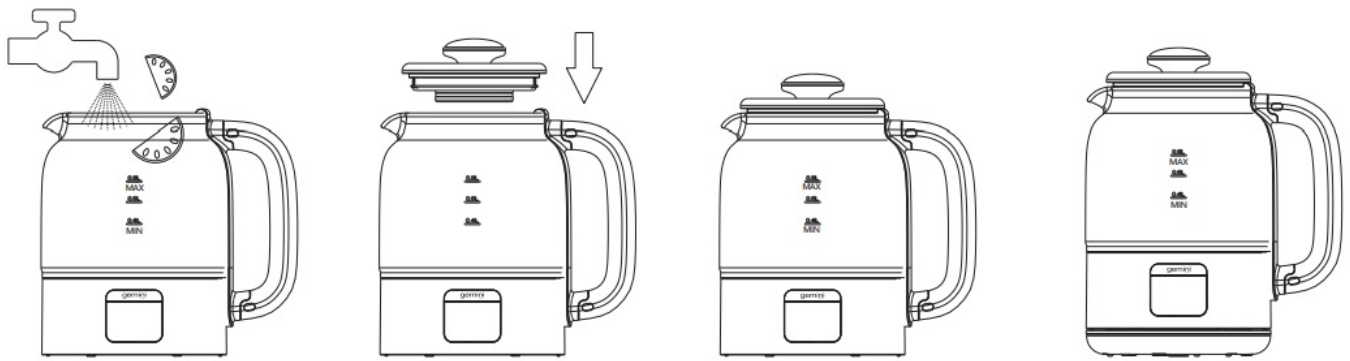
1. It is controlled by a microcomputer to achieve precise temperature control.
2. 5 default programs: preset, water boiling, scented tea, stewing, and keep warm.
3. 9.5hours preset timing and 5mins kettle-lift power down memory.
4. Use SUS304 stainless steel heating plate for boiling. When the water is boiled rapidly, the power will be halved, so as to save electricity.
5. The separated structure design can be rotated within 360° for placement and use.
6. With dry boil protection and auto cut-off after overheating functions.

### Guideline for Use

After the first usage, if spots appear on the heating plate, it is incrustation, which is a normal phenomenon. It can be removed by referring to the "Maintenance".

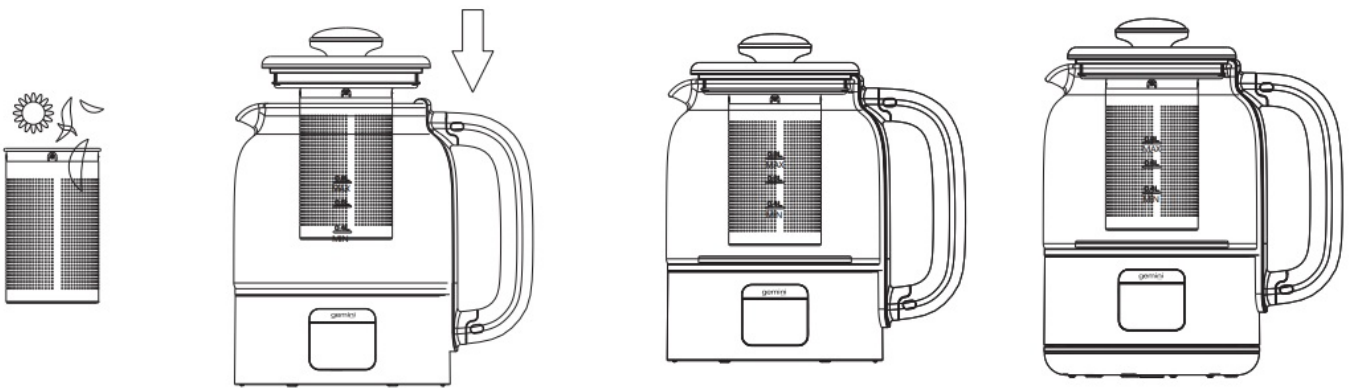
#### Food boiling

Prepare food ingredients and put them in the kettle body. Fill an appropriate amount of water (do not exceed the maximum water level ), then close the kettle lid and put the kettle on the base with an insert plug, then select the required function, and the product will start working.



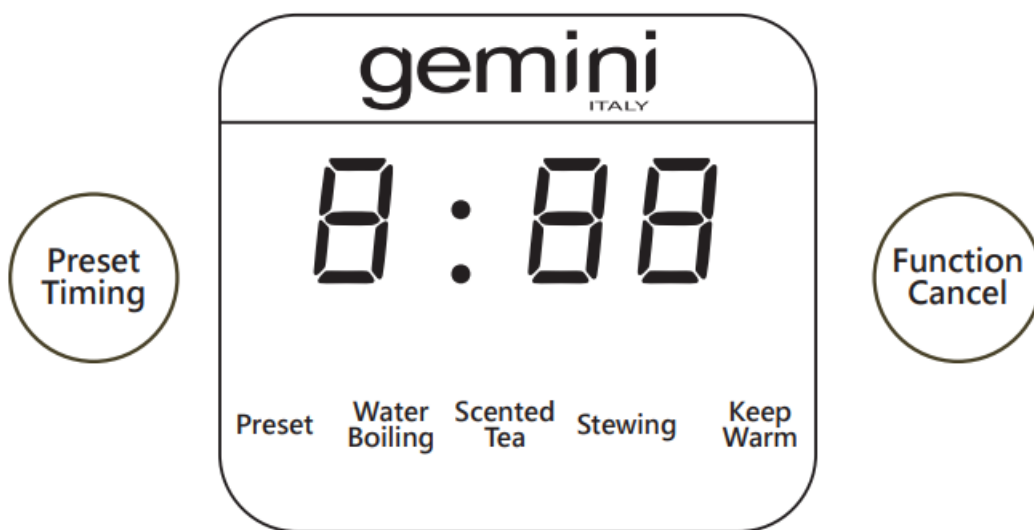
### Use of filter mesh

Prepare food ingredients and put them in the filter mesh. Fill an appropriate amount of water into the kettle body (do not exceed the maximum water level), then put the filter mesh into the kettle and close the lid. Put the kettle body on the base with insert the plug, then select the required function, the product will start working.



## Operation Method

### Operation steps



1. In the standby mode, press the "Preset/Timing" button to set the required preset time. If there is no need to set the preset time, please skip this step.
2. In the standby mode or after setting the preset time, press the "function/cancel" button to select the required function.

3. After selecting the required function, press the "Preset/Timing" button to adjust the required working time. If there is no need to adjust the working time, please skip this step.
4. After setting the function, the product will start working after 5 seconds automatically.
5. When the operation is completed, there is a sound indication and turn to keep warm automatically.

Kindly reminder:

1. When boiling some frothy soups or desserts, can open the kettle lid can be opened after the water is boiled to prevent overflow. In case of any overflow, please reduce the amount of water or food ingredients in the kettle body next time.
2. When boiling peanuts, tremella, and various beans, please soak them 2 hours in advance.
3. Please unplug when the operation is completed. In standby mode, the product will consume a small amount of power.

#### Preset and stewing work

Take the function of appointed stewing as an example: make the preset time at 7 a.m. to start stewing at 10 a.m.

1. Put the cleaned food into the kettle at 7 a.m., add an appropriate amount of water (do not exceed the maximum water level), close the kettle lid, and place the kettle body on the base.
2. Turn on the power, and the operation panel displays "0:00", that is, at the standby mode.
3. Press the "Preset/Timing" button to enter setting of the preset time. At this time, the indicator lamp flashes, and the panel displays 0:30, that is, 30 minutes.



4. Press the "Preset/Timing" button repeatedly to adjust the preset time to 3:00, that is, start working after 3-hour.



Kindly reminder:

If no need to set preset function, please skip the above steps.

5. Press the “Function/Cancel” button to enter the setting of the function selection, and press the “Function/Cancel” button repeatedly to select the required stewing function. At this time, the preset indicator lamp is on, the stewing indicator lamp starts flashing, and the panel displays 1:30.



6. Press the “appointment/timing” button to enter setting of the working time, select the required work time as 2:00 through the “appointment/timing” button, and the nixie tube displays the set working time.



Kindly reminder:

The heating time is set for each function according to the food ingredient. It is not recommended to change the

working time for the first boiling. Only after the first boiling, adjustment can be made according to the food ingredient and the taste.

7. After setting the function, wait for 5 seconds without operation, the product will start the preset work, and the panel will display the preset time in a countdown mode.



8. The preset time is ended at 0 o'clock, and the product will start operation. At this time, the indicator lamp is off, and the panel displays the water temperature. When the water temperature reaches the boiling point, the work countdown time will be displayed.



- 9.



When the work is completed, the product sends a “beeping” sound, the stewing indicator lamp is off, the keep warm indicator lamp is normally on, and the panel displays that the water temperature is above 98°C.

## Keep Warm

The keep warm time is 12 hours and cannot be adjusted. The keep-warm default temperature is 55°C (adjustable within the range of 40 to 90°C).

After product heating is completed, it will automatically enter the keep-warm mode.

### 1. Directly keep warm

After turning on the power supply, press the “Function/Cancel” button to select the keep warm function, and repeatedly press the “Preset/Timing” button to select the required keep warm temperature. It will start keeping warm after waiting for 5 seconds without operation.

Kindly remind: when only the keep warm function is selected, the water cannot be boiled, and it will start keeping warm according to the set temperature after reaching the set temperature.

### 2. Set the keep-warm temperature after work

After entering work and keep warm, press the “Preset/Timing” button to select the required keep-warm temperature, wait 3 seconds without operation, and the product will start operation. When the operation is completed, it will enter the corresponding keep-warm temperature.

## Other Functions

### 1. Dry boil protection

When the kettle is dry boil, the product will send a beeping sound, and the panel will display: E00. After adding water to cool down, it will return to the initial standby mode, and the panel will display 0:00.

### 2. Kettle-lift power down memory

After the kettle body is removed during the operation, the product has the function of powering down memory, and the panel will be off. If the kettle body is placed back on the base within 5 minutes, it will continue to work with the previously set.

## Function Timetable



Item	Function	Display default	Maximum setting	Minimum setting	Default keep-warm temperature	Maximum capacity (L)
1	Water boiling	-:—	-:—	-:—	55°C	0.8
2	Scented tea	0:05	0:10	0:01	55°C	0.8
3	Stewing	1:30	3:00	12:30	55°C	0.8
4	Keep warm	55°C	90°C	40°C	55°C	0.8

## Maintenance

1. After use, please unplug the power socket.
2. All components can be cleaned with detergent and sponge. Please do not use hard steel wire to clean, or might damage the surface.
3. To remove the water scale on the pot body, pour 20mL white vinegar on the heating plate to soak for 15 to 20 minutes, and then rinse with water.
4. Do not immerse the whole machine in water. The outer surface of the product can only be wiped with a wet towel. Do not wash with water to avoid electric leakage and malfunction.
5. When using or moving the health kettle, handle it with care, and do not move the health kettle when plugged.
6. When the product will not used for a long time, please clean it, put it in the packing box, and place the box in a ventilated and dry place, so as to avoid being affected with damp. Otherwise, the product performance might be affected.

### ( I ) Remove water scale

Water scale is a calcium deposit that naturally forms when water is heated. It often adheres to the inner wall of the kettle and the heating plate, which will affect the product life of the kettle body and the water quality. Therefore, suggest cleaning it regularly. In normal use, it is generally descaled twice a year (depending on the water quality in different places). Mix vinegar and water according to the ratio of 1:2 into the kettle body to the “maximum” position, and then start to boil. Keep the mixture in the kettle body for 24 hours, then pour the mixture away, fill it with clean water to the “maximum” position, and boil. After the boiled water is poured out, the scale removal work is completed.

Finally, clean the inside of the kettle body with water.

### ( II ) Clear tea scale

After use each time, clear the tea leaves in the mesh, add a small amount of water and detergent to the kettle body, use a soft cloth or sponge to scrub the inside of the kettle body, and pour out the water in the kettle body after scrubbing. If it is difficult to clean the tea scale, you can pour a small amount of the detergent and water to boil again, pour out the boiled water, and rinse the inside of the kettle body with water.

### ( III ) Outer part cleaning

1. If the exterior of the kettle is dirty, you can wipe it with a wet towel and an appropriate amount of detergent. Do not clean the outer surface of the product directly with water.
2. When wiping, do not plug to the power.

## Notice:

1. After use, remember to unplug, and clean the body when cooled down.
2. Do not immerse the kettle body or base in water. Use neutral detergent rather than corrosive detergent.
3. Do not use thinner, water gasoline, scouring powder, hard brush, or stainless steel wire ball to wipe, or might damage the surface.
4. When the product will not be used for a long time, please clean it, put it in the packing box, and place the box in a ventilated and dry place, so as to avoid being affected with damp. Otherwise, the product performance might be affected.
5. If there is no water in the kettle, dry boiling shall be prohibited. Otherwise, the product life of the kettle will be reduced.

## Frequently Asked Questions

### No display on the digital screen:

- a. Power off or not.
- b. Is the power cord plug inserted into the socket.
- c. Is the power socket turned off.

### The food is not cooked:

- a. Is the set time selected correctly. Is the time adjusted down.
- b. Too little water in the kettle body.

### Remarks:

If the fault still cannot be eliminated after analyzing the above phenomena, please contact the maintenance outlet or the dealer of this company. It is strictly forbidden for non-professionals to disassemble or assemble the machine independently.

## Product specifications

MODEL: GMK800

Voltage: 220-240V~

Frequency: 50-60Hz

Power: 600W

Capacity: 0.8L (Max)

Product dimensions: 181(W) x 218(H) x 132(D) mm (including the pot body and cover)

**\* The specifications of related products may vary depending on the batch of accessories or the voltage difference in the actual use area.**

ToolBox Customer Service Centre: 4/F, DCH Building, 20 Kai Cheung Road, Kowloon Bay, Hong Kong

Customer Service Hotline : (852) 8210 8210 Service E-mail: [8210service@gilman-group.com](mailto:8210service@gilman-group.com) Please register now at: [www.toolbox.hk](http://www.toolbox.hk) Website : [www.gilman-group.com](http://www.gilman-group.com)




Proudly Serviced by:



a Gilman Group Company

Documents / Resources

 <p>gemini</p> <p>GMK800 MULTI-FUNCTIONAL HEALTH KETTLE RECHERCHES GEMINI</p>	<p><a href="#">gemini GMK800 Multi-Functional Health Kettle</a> [pdf] Instruction Manual</p> <p>GMK800 Multi-Functional Health Kettle, GMK800, Multi-Functional Health Kettle, Health Kettle, Kettle</p>
--	--

[Manuals+](#)