



**30200000766 Tap
Down Stone
Composite Resilient
Flooring**



GemCore 30200000766 Tap Down Stone Composite Resilient Flooring Instruction Manual

[Home](#) » [GemCore](#) » GemCore 30200000766 Tap Down Stone Composite Resilient Flooring Instruction Manual 

Contents

- [1 GemCore 30200000766 Tap Down Stone Composite Resilient Flooring](#)
- [2 Product Usage Instructions](#)
- [3 FAQ](#)
- [4 GENERAL PREPARATIONS](#)
- [5 TOOLS REQUIRED](#)
- [6 INSTALLATION](#)
- [7 CARE & MAINTENANCE](#)
- [8 DISASSEMBLY](#)
- [9 Documents / Resources](#)
 - [9.1 References](#)



GemCore 30200000766 Tap Down Stone Composite Resilient Flooring



Specifications:

- Size: 150 x 900 mm
- Release Date: August 2024

Product Information:

Installation Guidelines for Stone Composite Flooring Collections. Please read the instructions carefully before installation. Refer to the manufacturer's website for the most up-to-date installation guidelines.

Product Usage Instructions

General Preparations

Make sure to read all important notices before proceeding with the installation.

Subfloor Preparation & Requirements

- **Wood Subfloors:** Follow specific guidelines for wood subfloor preparation.
- **Concrete Subfloors:** Check and adhere to the concrete moisture vapor emissions limits for different installation types.
- **Existing Floors:** Ensure existing floor coverings meet cleanliness, flatness, dryness, and structural soundness

criteria.

- **Sound Reducing Underlayments:** Use approved sound-reducing pads that meet density and thickness requirements. Avoid unsuitable materials such as Cork or Rubber underlayment pads.
- **Do Not Install Over:** Avoid specific flooring types and materials listed to prevent damage or warranty void.

Installation

1. Clean the subfloor or pad surface thoroughly before starting the installation.
2. Lay the flooring from left to right, ensuring proper positioning and spacing with spacers.
3. Follow specific instructions for plank positioning and use of tools like mallets.

FAQ

Q: What should I do if the planks are not at the same height or well-locked together during installation?

A: If you notice issues with plank alignment or locking, follow the disassembly instructions provided in the manual. Disassemble and check for any debris stuck inside the locking mechanism. Improper alignment could result in permanent damage, which may not be immediately visible.

PLEASE READ CAREFULLY BEFORE INSTALLING REFER TO THE MANUFACTURER'S WEBSITE FOR THE MOST UP TO DATE INSTALLATION GUIDELINES

WARNING! DO NOT SAND, DRY SWEEP, DRY SCRAPE, DRILL, SAW, BEAD-BLAST OR MECHANICALLY CHIP OR PULVERIZE EXISTING RESILIENT FLOORING, BACKING, LINING FELT, ASPHALTIC "CUTBACK" ADHESIVES OR OTHER ADHESIVES.

These products may contain either asbestos fibers and/or crystalline silica. Avoid creating dust. Inhalation of such dust is a cancer and respiratory tract hazard. Smoking by individuals exposed to asbestos fibers greatly increases the risk of serious bodily harm. Unless positively certain that the product is a non-asbestos-containing material, you must presume it contains asbestos. Regulations may require that the material be tested to determine asbestos content and may govern the removal and disposal of material. See current edition of the Resilient Floor Covering Institute (RFCI) publication Recommended Work Practices for Removal of Resilient Floor Coverings for detailed information and instructions on removing all resilient covering structures. For current information go to www.rfci.com.

GENERAL PREPARATIONS

IMPORTANT NOTICE

After installation, make sure that the flooring is not exposed to temperatures less than 0°F (-15°C) or greater than 140°F (60°C).

TOOLS REQUIRED

Spacers, rubber mallet, ruler, pencil, tape measure, utility knife, tapping block, 6 mil / 0.15mm moisture barrier, waterproof tape, square, jamb saw, chalk line, eye protection, level, knee pads, broom or vacuum, transition moldings, base molding. For all floating installations, use a minimum 6 mil / 0.15mm poly-film moisture barrier over the subfloor, with waterproof tape to seal the moisture barrier seams. For glue-down installations, use a premium pressure-sensitive adhesive designed and approved for use with Vinyl flooring. Recommended adhesives: Titebond 675, Titebond 780, Bostik Uni-Lock, or Bostik LVT Lock+.

- Prior to installation, it is the installer's responsibility to inspect material in daylight for visible faults/damage, including defects or discrepancies in color or gloss. Check the edges of the flooring for straightness and any damage. The appearance of the material must be approved by the homeowner/end-user before proceeding with installation. No claims on visible defects or otherwise unsatisfactory appearance will be accepted after installation.
- Whenever possible, lay boards following the direction of the main source of light. In narrow hallways, it is best to install parallel to the length of the hall.
- Make sure to always work from 3 to 4 cartons at a time, mixing the planks during the installation.
- Check if subfloor/site conditions comply with the specifications described in these instructions. If the subfloor does not meet these specifications, DO NOT INSTALL. Contact your supplier immediately.
- Flooring products can be damaged by rough handling before installation. Store, transport and handle the flooring carefully to prevent any damage. Store cartons flat, never on edge.
- Flooring products can be heavy and bulky. Always use proper lifting techniques when handling these products. Whenever possible, make use of material-handling equipment such as dollies or material carts. Never lift more than you can safely handle; get assistance.
- Calculate the room surface prior to installation and plan an extra 5-10% for cutting waste.
- The environment where the flooring is to be installed is critically important for a successful installation and continued performance of the flooring products. The flooring is intended to be installed in interior locations only. These interior locations must meet the climatic and structural requirements detailed in this document.
- Permanent HVAC must be on and functioning normally prior to bringing the flooring on site. Temporary/portable heaters are not recommended as they may not heat the room and subfloor sufficiently or evenly. Kerosene heaters should never be used.
- It is necessary to maintain a constant temperature between 50-90°F / 10-32°C before, during and after the installation.
- In most cases, this product does not need to be acclimated. However, if the boxes of flooring were exposed for over 2 hours to extreme temperatures under 50°F / 10°C or over 90°F / 32°C within 12 hours before the installation, acclimation is required. In this case, keep the boards at room temperature for at least 24 hours in an unopened package before you start the installation.
- After installation, make sure that the flooring is not exposed to temperatures less than 0°F / -18°C or greater than 140°F / 60°C. This includes the surface temperature of the floor in direct sunlight. In warmer climates, window treatments may be needed to maintain this requirement.
- For floor surfaces exceeding 6400 ft² / 620m² and/or spans exceeding 80 ft / 25m, install with an expansion gap at least every 50 ft / 15m. Cover the expansion gap with a t-molding or other transition strip that is affixed to the subfloor (NOT the flooring) and does not impede the expansion or contraction of the floor on either side, leaving at least 1/4" / 6mm between the flooring and the vertical faces of the t-molding/transition strip. An expansion gap and t-molding/transition strip are also required wherever the flooring planks change direction.

IMPORTANT NOTICE

Flooring may be installed with a direct glue-down method on approved wooden (or) concrete substrates that are on or above grade only. Use only premium pressure-sensitive vinyl flooring adhesive. Glue to the substrate only as part of a full glue-down installation of the entire floor area. Do not glue down in localized areas. Please consult with the adhesive manufacturer to determine if it is suitable for use with this material. In addition to these instructions, follow the adhesive manufacturer's installation instructions and subfloor requirements carefully.

SUBFLOOR PREPARATION & REQUIREMENTS

- The subfloor must be structurally sound, clean, dry, and smooth. For all subfloor types, subfloor height variations should not exceed 1/8" / 3mm in a 6' / 2m radius, or 3/16" / 5mm in a 10' / 3m radius. The substrate should not slope more than 1" / 25mm per 6 ft / 2m in any direction.
- Depressions, deep grooves, expansion joints, and other subfloor imperfections must be filled.
- Substrates must be free from excessive moisture or alkali. Remove dirt, paint, varnish, wax, oils, solvents, any foreign matter and contaminants. Do not use products containing petroleum, solvents or citrus oils to prepare substrates as they can cause staining and expansion of the new flooring.
- Although this floor is waterproof, it is not intended to be a moisture barrier. The subfloor must be dry per the requirements detailed below for each subfloor type.
- This product is also not to be installed in areas that have a risk of flooding such as saunas or outdoor areas, seasonal porches, camping trailers, boats, RVs, lanais, rooms that are prone to flooding, or rooms or homes that are not temperature-controlled.
- Soft underlayments and substrates will diminish the product's inherent strength in the locking mechanism and will void the warranty.
- Acceptable job site conditions, including subfloor moisture conditions, must be maintained throughout the lifetime of the flooring.

WOOD SUBFLOORS

- If this flooring is intended to be installed over an existing wood floor, repair any loose boards or squeaks before you begin the installation. Install perpendicular to the existing wood floorboards.
- Wood subfloors must have no more than 12% MC (moisture content).
- Basements and crawl spaces must be dry, skirted and well-ventilated. Use of a 6-mil polyfilm moisture barrier is required to cover 100% of the crawl space earth.
- All other subfloors – Plywood, OSB, particleboard, chipboard, wafer board, etc. must be structurally sound and must be installed following their manufacturer's recommendations.
- Do not install over sleeper construction subfloors or wood subfloors applied directly over concrete.

CONCRETE SUBFLOORS

- Concrete subfloors must be fully cured, at least 60 days old, smooth, permanently dry, clean, and free of all foreign material such as dust, wax, solvents, paint, grease, oils, and old adhesive residue. Curing agents and hardeners could cause bonding failure and should not be used.
- Depressions, deep grooves, expansion joints and other subfloor imperfections must be filled with patching & leveling compound.
- The subfloor must be dry with a pH limit of 9 and comply with the moisture emissions requirements as tested by one of the below methods and thoroughly recorded:
- Concrete moisture vapor emissions as measured with the calcium chloride test (ASTM F1869) must not exceed 8 lbs. per 1000 ft² per 24 hours for floating
- Concrete moisture vapor emissions as measured with the calcium chloride test (ASTM F 1869) must not exceed 8 lbs. per 1000 ft² per 24 hours for floating installations, or 3 lbs for glue down installations.
- Concrete relative humidity as measured with in-situ relative humidity probes (ASTM F2170), must not exceed

90% RH for floating installations, or 75% RH for glue down installations.

- In all floating installations, a minimum of 6 mil / 0.15 mm poly-film is required as a moisture barrier between the concrete subfloor and the flooring.
- The Limited Warranty does not cover discoloration from mold or from flooding, floods, leaking plumbing or appliances, water entering through sliding glass doorways, or floor covering failure due to hydrostatic pressure or moisture vapor emission.

EXISTING FLOORS

- The flooring can be installed over most existing hard surface floor coverings, provided that the existing floor surface is clean, flat, dry, securely fastened, and structurally sound.
- Never use solvents or citrus adhesive removers to remove old adhesive residue. Solvent residue left in and on the subfloor may affect the new floor covering.

SOUND REDUCING UNDERLAYMENTS

- Once all of the applicable subfloor requirements are met, this product may be installed on top of a sound reducing pad ONLY if the pad meets ALL of these requirements:
- Pad is approved by the pad manufacturer for use with floating LVT flooring
- Minimum density of pad: 30 lbs.
- Maximum thickness of pad: 0.06" (1.5mm)
- Recommended pad: Silencer LVT from Foam Products, Inc.
- Pads that are too thick or too soft will allow excessive vertical deflection that could result in damage to the edges and/or plank separation. Do not install this flooring over Cork or Rubber underlayment pads, or soft foam pads intended for use with laminate and hardwood flooring.

DO NOT INSTALL OVER

- Hardwood flooring / wood subfloors that lay directly on concrete or dimensional lumber or plywood installed directly on concrete.
- Floating floor of any type, loose lay, or perimeter fastened LVT / sheet vinyl.
- Any type of carpet.
- Existing cushion-backed vinyl flooring or vinyl flooring of more than one layer of thickness.
- Metal expansion / isolation joints.
- Underlayment pads that do not meet the requirements listed above.

IMPORTANT NOTICE – IN-FLOOR RADIANT HEAT SYSTEMS

- Flooring can be installed over radiant heating elements embedded at least ½" (12mm) below the subfloor surface using the floating method. Maximum operating temperature should never exceed 85°F (30°C). Use of an in-floor temperature sensor is recommended to avoid overheating.
- Turn the heat off for 24 hours before, during and 24 hours after installation when installing over radiant heated subfloors.
- Failure to turn the heat off may result in significantly shortened working time of the adhesive.

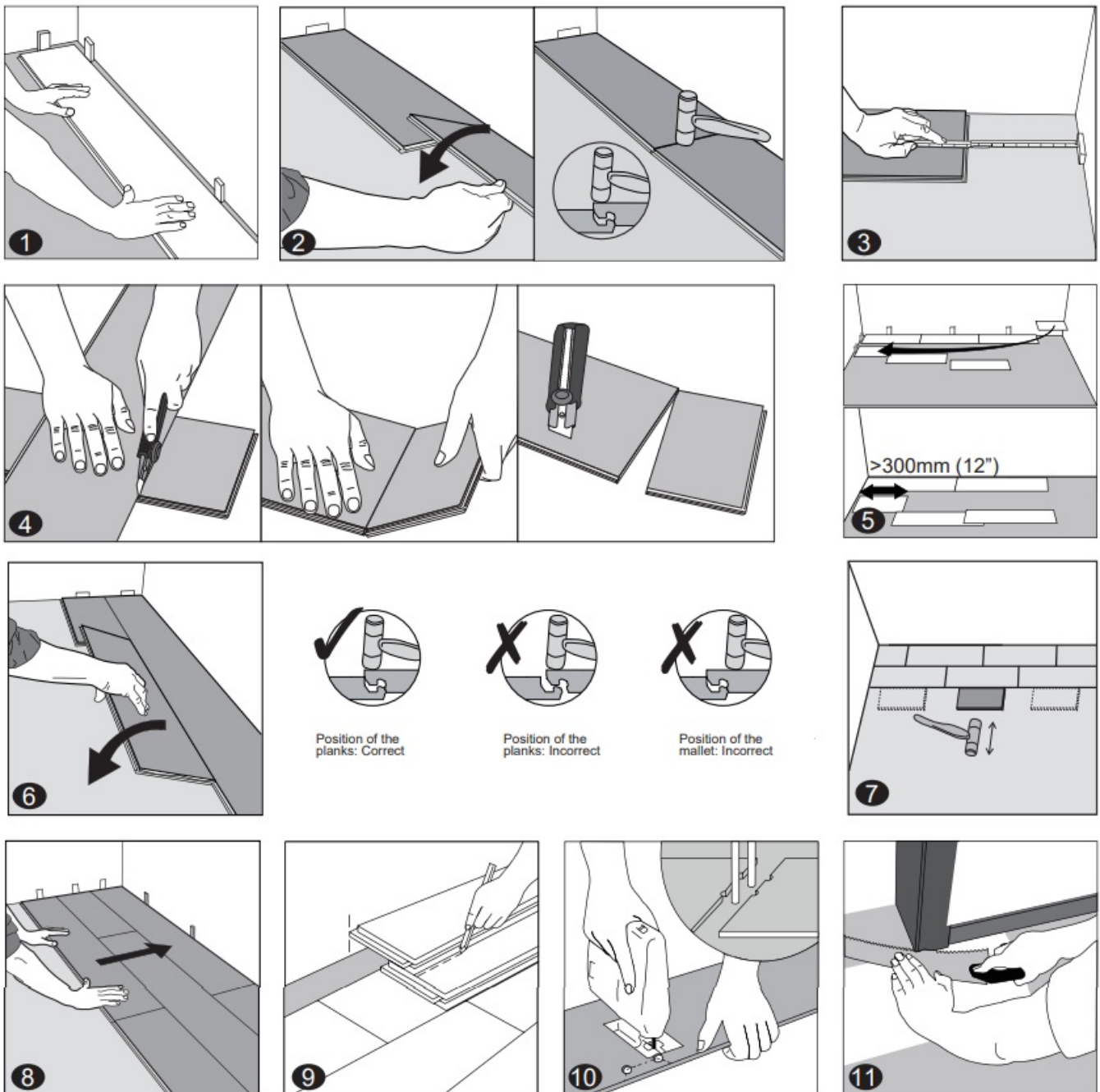
- Before installing over newly constructed radiant heat systems, operate the system at maximum capacity to force any residual moisture from the cementitious topping of the radiant heat system.
- Make sure that the temperature in the room is maintained consistently between 60-90°F / 15-32°C before and during the installation.
- Once the installation is completed, the heating system should be turned on at the ambient temperature and gradually increased in 9°F / 5°C increments every 12 hours until reaching normal operating conditions.
- Refer to the radiant heat system's manufacturer recommendations for additional guidance.
- Failure to strictly follow adhesive manufacturer's guidelines may result in failure and void the warranty.

Warning: Electric heating mats that are not embedded into the subfloor are not recommended for use underneath this flooring. Using electric heating mats installed directly underneath the flooring will void the warranty. It is best to install the flooring over embedded radiant floor heating systems and adhere to the guidelines listed above. All electric heating mats must have a built-in thermal cutoff.

Tip: The best way to maximize the results of your heating system is to have "ON" times with a comfortable temperature and "AWAY" times with setback temperatures which are normally 8°F / 4°C lower than your comfort temperature. The setback temperatures keep the space within a reasonable range so that the system is quicker to heat your room back to comfort levels when needed.

INSTALLATION

- Remove trim moldings, wall base, appliances and furniture from room. For best results, door trim should be under-cut to allow flooring to move freely without being pinched. After preparation work, sweep and vacuum the entire work area to remove all dust and debris.
- With this floating floor, always leave a 1/4" (6mm) expansion gap between walls and fixtures such as cabinets, pipes, pillars, stairs, waterfall countertops, etc. The floor must be free to expand and contract. Be especially careful to maintain this expansion gap when cutting pieces to fit through doorways, where it is common for floating floors to be caught by vertical obstructions. These gaps will be covered with trim moldings after the floor is installed. **Tip:** When installing around pipes, drill holes 1/2" (12mm) larger than the diameter of the pipes.
- Whenever possible, plan the layout so that the joints in the planks do not fall on top of joints or seams in the existing substrate. The end joints of the planks should be staggered a minimum of 8" / 20cm apart. Do not install over metal expansion joints. Avoid installing pieces shorter than 12" / 30cm at beginning or end of rows.
- Do not install kitchen cabinets directly over your floor.. Built-in cabinets, islands, and similar heavy items must be installed first. Only then can the flooring be installed, leaving an appropriate expansion gap. This gap will be covered with trim moldings after the floor is installed.
- Do not fasten closet tracks or door stops to the subfloor through the flooring, and do not attach base or transition moldings to the flooring. The floor's quality can only be guaranteed if the floor can move freely.
- Measure the area to be installed: the board width of the last row must not be less than 2" (50mm). If so, adjust the width of the first row to be installed.
- Thoroughly clean the subfloor.
- Install the polyfilm moisture barrier (floating installations only). Secure all seams with a quality waterproof tape. If installing an approved additional pad that has a built-in moisture barrier, no polyfilm is required. Be careful not to overlap edges of the pad and to seal all seams with waterproof tape. As noted, underlayment pads with a density of less than 30 lbs. or thickness greater than 0.06" (1.5mm) could damage the locking mechanism and will void the warranty.



1. After thoroughly cleaning the subfloor or pad surface, begin laying flooring from left to right. Position the first plank so that groove edge is facing you.

Place the floorboard 1/4" (6mm) from the left wall. Use spacers between the wall and the floorboard.

2. Second plank, first row. Align the ends of the planks precisely and then drop the plank and GENTLY tap down the end with a rubber mallet so it firmly locks into the previous plank, until both are at the same height.

NOTE: be sure to always tap in the correct location at the very end of the plank as shown, and tap gently.

Tapping away from the end or tapping too hard may damage the locking mechanism. Make sure both planks are perfectly aligned before continuing. Continue installing the first row until you reach the wall on the right.

IMPORTANT NOTICE

If you notice that both planks aren't at the same height or are not well locked together, please follow the disassembly instructions at the bottom of this document, disassemble and check if any debris is stuck inside the locking mechanism. Failure to properly line up the end joint and attempting to force it in while out of alignment could result in permanent damage to the end joint, and that damage may not be immediately visible.

3. At the end of the first row, leave an expansion gap of 1/4" (6mm) to the wall and measure the length of the last

plank to fit.

4. To cut the plank, use a simple utility knife and ruler or square, and with the top side facing up, cut heavily and several times on the same axis. The knife will not go through the surface but will make a deep cut. You can then lift one half of the plank using your other hand to hold down the second, placing it very close to the cut. The plank will split naturally.
5. Start the second row with the leftover cut part of the last plank of the previous row. This small plank should measure at least 12" / 30cm. Otherwise, cut a new plank in half and use it to begin the second row. The end joints of each adjoining row should not be closer than 8" / 20cm to each other. Whenever practical, use the piece cut from the preceding row to start the next row. End joints of all planks should be staggered 8" / 20cm or more. Avoid "H" patterns, where the end joint aligns with an end joint in another nearby row.
6. Carefully click the long side of the plank into the previous row and slide it tight to the short end of the previous plank, holding it up at an angle of 30 degrees. Make sure the long side is fully and precisely engaged with the previous row, so that it is perfectly parallel. Failure to align the long side correctly or failure to make sure the short sides are tight together could result in damage to the short side when you drop it in. Once aligned, drop the plank and GENTLY tap on the very end of the plank with a rubber mallet so it firmly locks into the previous plank, until both are at the same height
7. After finishing the installation of every row, use scrap pieces and a small hammer or rubber mallet to gently tap the planks into the click of the previous row to make sure they are tightly clicked together and that there is no gap between the long side of the planks installed. Any gapping can compromise the whole installation.
8. After the first 2-3 rows of planks are installed, they should be checked with a string line to ensure that the rows are still running straight. If they are not, it could be that the starting wall has some irregularities that caused bowing in the installation. If so, the starting row of planks may have to be scribed and re-trimmed to account for any unevenness in the wall. This can be done without having to disassemble the beginning rows.
9. To lay the last row: position a loose board exactly on top of the last row laid. Place another board on top, with the tongue side touching the wall. Draw a line along the edge of this board, to mark the first board. Cut along this line to obtain the required width. Insert this cut board against the wall. The last row should be at least 2" (50mm) wide. The spacers can then be removed
10. Holes for pipes: measure the diameter of the pipe and drill a hole that is 1/2" (12mm) larger. Saw off a piece as shown in the figure and lay the board in place on the floor. Then lay the sawed-off piece in place.
11. Door molding/jambs and skirting: lay a board (with the decorative side down) next to the door molding and saw as shown in the figure. Then slide the floorboard under the molding. Ensure that the flooring is free to move under the molding

FINISHING THE INSTALLATION

- Replace molding or wall base, allowing slight clearance between the molding and the planks so that the floor can expand and contract freely. Attach the molding to the wall, never to or through the flooring. At doorways and other areas where the flooring planks may meet other floor coverings, use a T-molding, Overlap Reducer or other transition piece to cover the exposed edge of the flooring. Always leave at least 1/4" expansion space between the vertical portion of any molding or transition piece and the flooring.
- Clean the floor with a high-quality, pH-neutral vinyl cleaner.
- Any unused material should be stored in a dry place in case future repairs are needed. We recommend saving at least 2 boxes.
- Always protect the surface of the installed flooring during subsequent construction. Cover the floor with a quality

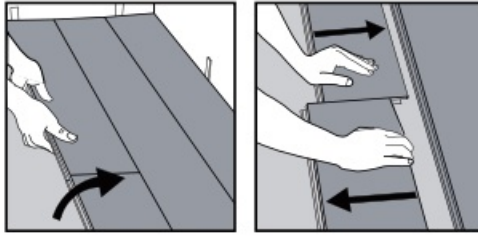
floor protector such as RamBoard. Do not use Red Rosin paper, as it may discolor the flooring. Do not use plastic or polyethylene sheeting to cover the floor. To avoid damage, the flooring must be cleaned and completely free of all grit and debris prior to laying the floor protector. Secure the floor protector to the baseboards; never tape it directly to flooring

CARE & MAINTENANCE


- Do not place extremely heavy furniture (pool tables, pianos, heavy bookcases, etc.), cabinets, or other permanent fixtures on top of the floor. Floating floors must be able to expand and contract freely. Too much weight will pinch the floor to the subfloor and prevent it from moving as needed, possibly resulting in edge lifting, plank separation, and other serious problems.
- Sweep or vacuum daily. Use only soft bristle attachments for vacuums.
- Place walk-off mats at all outside entrances to reduce the amount of dirt brought into the space. Do not use mats with latex or rubber backing since these backings can cause permanent discoloration.
- Clean up spills and excessive liquids immediately.
- Damp mop as needed with water, or with a high-quality, pH-neutral vinyl cleaner such as Bona Pro Series Luxury Vinyl Floor Cleaner. Do not use solvent-based cleaners, waxes, oils, bleaches, abrasive cleaners, or products recommended for other types of flooring. Avoid any cleaners that describe themselves as a polish, 'rejuvenator,' or 'cleaner and polish in one.' Polishes can leave a residue that will dull the finish, collect dirt, and can be extremely difficult to remove.
- Do not use scouring powder products, steel wool, or abrasive cleaning implements on the floor.
- Use proper floor protection devices such as felt protectors under furniture to prevent scratching. Under desk chairs or other rolling chairs, protect the floor with a hard, solid mat. Rubber, carpet or other soft chair mats may allow indentations and/or damage to the locking mechanism.
- Furniture with castors or wheels must have easy swiveling, large surface, and non-staining castors that are suitable for resilient floors. Do NOT use ball-type castors as they can damage the floor.
- Avoid walking on your vinyl floors with cleats, sports shoes, and high heels.
- Do not roll, drag or slide heavy objects across the floor. When moving heavy furniture, pick up the furniture completely and place it on a protective surface such as plywood or heavy cardboard so that the furniture can be 'walked' along that surface.
- After installation, make sure that the flooring is never exposed to temperatures less than 0°F (-15°C) or greater than 140°F (60°C). Direct sunlight on flooring can produce surprisingly high temperatures. Window treatments may be necessary to protect the flooring from high heat.

DISASSEMBLY

Separate the whole row by lifting it up delicately at an angle. To separate the planks, leave them flat on the ground and slide them apart. If planks do not separate easily, you can slightly lift up the planks (5°) when sliding them apart



Documents / Resources

	<p>GemCore 30200000766 Tap Down Stone Composite Resilient Flooring [pdf] Instruction Manual</p> <p>30200000766, 30200000766 Tap Down Stone Composite Resilient Flooring, Tap Down Stone Composite Resilient Flooring, Stone Composite Resilient Flooring, Composite Resilient Flooring, Resilient Flooring, Flooring</p>
---	--

References

- [User Manual](#)

Manuals- Privacy Policy

This website is an independent publication and is neither affiliated with nor endorsed by any of the trademark owners. The "Bluetooth®" word mark and logos are registered trademarks owned by Bluetooth SIG, Inc. The "Wi-Fi®" word mark and logos are registered trademarks owned by the Wi-Fi Alliance. Any use of these marks on this website does not imply any affiliation with or endorsement.