



## **gembird TWS-01 Bluetooth TWS IN-Ears User Manual**

[Home](#) » [GEMBIRD](#) » gembird TWS-01 Bluetooth TWS IN-Ears User Manual 

**gembird TWS-01 Bluetooth TWS IN-Ears User Manual**



## Contents

### [1 Features](#)

### [2 Specifications](#)

### [3 Operation Instruction](#)

### [4 Declaration of conformity](#)

### [5 Waste disposal:](#)

### [6 WARRANTY CONDITIONS](#)

### [7 Documents / Resources](#)

#### [7.1 References](#)

### [8 Related Posts](#)

## Features

- Bluetooth TWS in-ears
- Up to 3 hours of listening time on a single charge
- Battery in the storage case adds up to 9 hours of listening time
- Automatically mutes your music in case of incoming calls
- LED status indicator

## Specifications

- **Interface:** Bluetooth v.5, pin code "0000"
- **Bluetooth frequency range:** 2402 ... 2480 MHz
- **RF output power:** 4 dBm
- **Supported profiles:** HSP, HFP, A2DP and AVRCP
- **Recharging time:** up to 1 hour, USB Type-C port
- **Operation distance:** up to 10 m in the open air
- **Speaker frequency response:** 20 Hz – 20000 Hz
- **Battery:** case 200 mAh; earbuds internal 30 mAh x 2 pcs, Li-Polymer
- **Net weight:** (whole set): 29 g

## Operation Instruction



<1sec



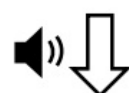
0000

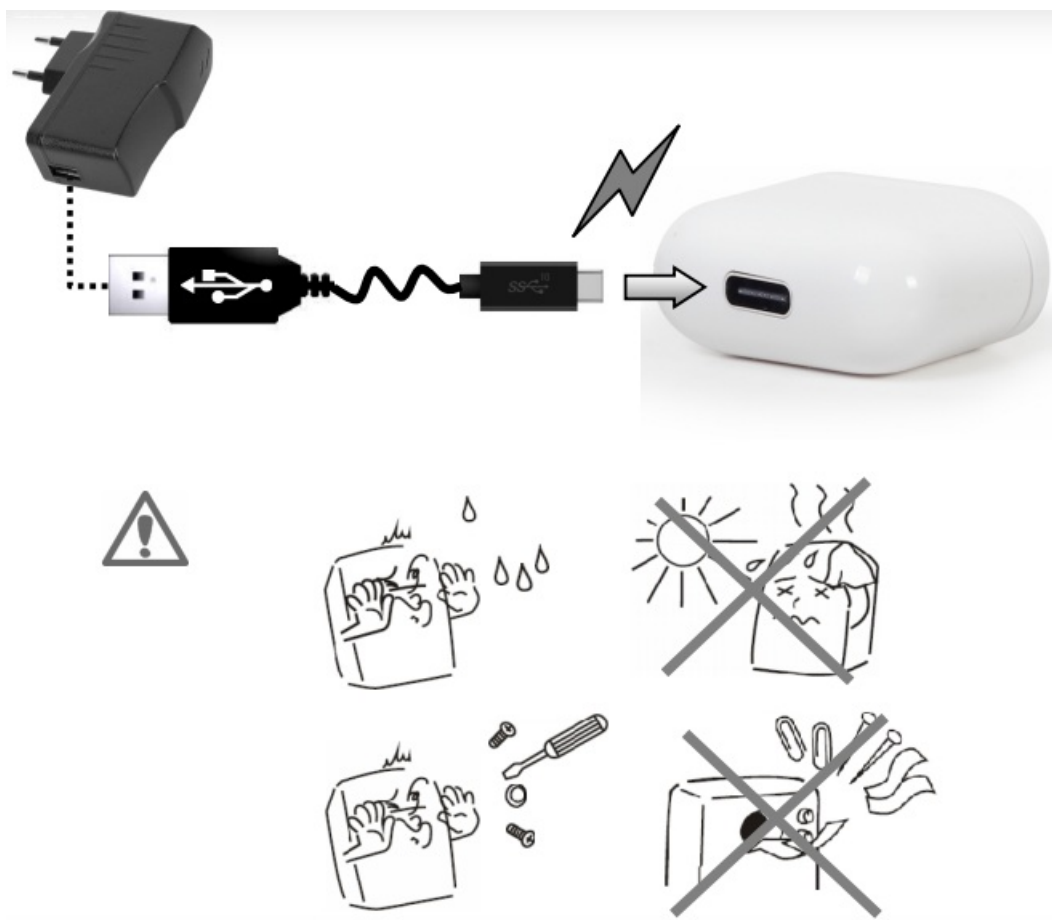
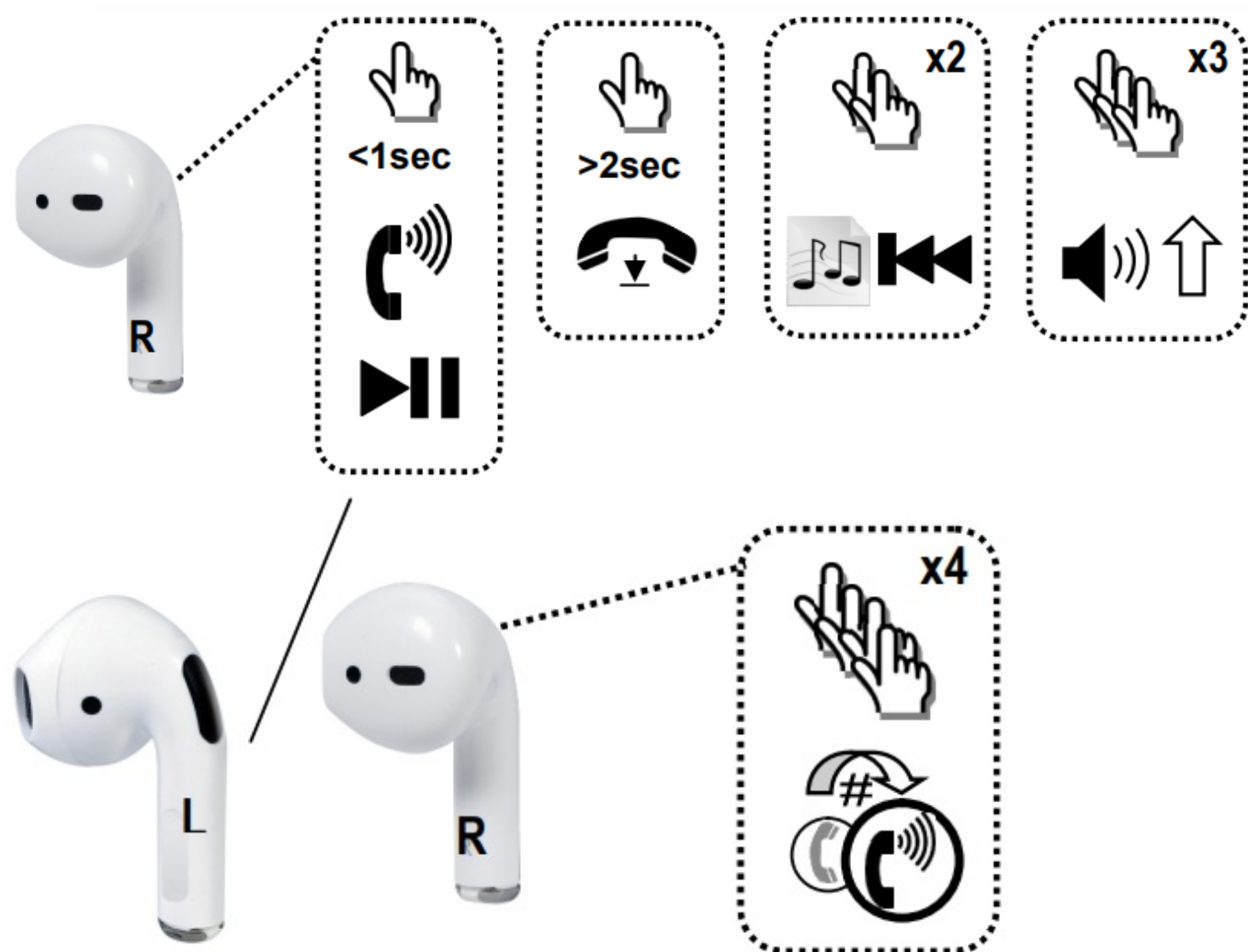


<1sec



>2sec





Declaration of conformity

This product is tested and complies with the essential requirements of the laws of member states concerning RED (2014/53/EU), RoHS (2011/65/EU).

The CE declaration can be found under [www.gembird.eu](http://www.gembird.eu)

## Waste disposal:

Do not deposit this equipment with the household waste.

Improper disposal can harm both the environment and human health.

For Information about waste collection facilities for used electrical and electronic devices, please contact your city council or an authorized company for the disposal of electrical and electronic equipment.

## WARRANTY CONDITIONS

The receipt must clearly list the date of purchase and the part number, in addition it should be printed.

Keep the receipt for the entire warranty period since it is required for all warranty claims.

During the warranty period the defective items will be credited, repaired or replaced at the manufacturer's expense.

Work carried out under the warranty neither extends the warranty period nor starts a new warranty period.

The manufacturer reserves the right to void any warranty claim for damages or defects due to misuse, abuse or external impact (falling down, impact, ingress of water, dust, contamination or break). Wearing parts (e.g. rechargeable batteries) are excluded from the warranty.

Upon receipt of the RMA goods, Gembird Europe B.V. reserves the right to choose between replacement of defective goods or issuing a credit note.


The credit note amount will always be calculated on the basis of the current market value of the defective products. Gembird Europe B.V. Wittevrouwen 56, 1358CD Almere,

**The Netherlands**

[www.gembird.nl/service](http://www.gembird.nl/service)

[support@gmb.nl](mailto:support@gmb.nl)

## Documents / Resources

 <p>TWS-01</p> <p>BLUETOOTH TWS IN-EARS TWS-01, Bluetooth TWS IN-Ears, TWS IN-Ears, Bluetooth IN-Ears, IN-Ears</p>	<p><a href="#">gembird TWS-01 Bluetooth TWS IN-Ears</a> [pdf] User Manual</p> <p>TWS-01, Bluetooth TWS IN-Ears, TWS IN-Ears, Bluetooth IN-Ears, IN-Ears</p>
---	---

## References

- [SE.se - Sök på nätet](#)
- [Gembird](#)
- [Service](#)