




gembird TSL-CAM-WRHD-01 Smart Rotating WiFi Camera User Manual

[Home](#) » [GEMBIRD](#) » gembird TSL-CAM-WRHD-01 Smart Rotating WiFi Camera User Manual 

Contents

- [1 gembird TSL-CAM-WRHD-01 Smart Rotating WiFi Camera](#)
- [2 Product Information](#)
- [3 Product Usage Instructions](#)
- [4 Features And Specifications](#)
- [5 Multiple Platform Support](#)
- [6 APP and compatibility](#)
- [7 Operating Instructions](#)
- [8 GENERAL INFORMATION AND SAFETY](#)
- [9 DECLARATION OF CONFORMITY](#)
- [10 Documents / Resources](#)
 - [10.1 References](#)
- [11 Related Posts](#)



gembird TSL-CAM-WRHD-01 Smart Rotating WiFi Camera



Product Information

- **Product Name:** TSL-CAM-WRHD-01
- **Product Type:** Smart Rotating WiFi Camera
- **Model Number:** TSL-CAM-WRHD-01
- **Resolution:** 1080P
- **Brand:** GEMBIRD EUROPE B.V.
- **Website:** <http://www.gembird.eu>
- **Compatibility:** Tuya Smart Life app and devices using iOS 8.0 and above or Android 5.0 and above with Wi-Fi option
- **Supported Platforms:** Most popular smartphones and computers

Product Usage Instructions

Login to the App

1. Search for, download, and install the Smart Life App on your phone or tablet.
2. Open the App and register your user account by selecting your country, entering your email, getting the verification code, and inputting a secure password. If you already have a Smart Life account, you can simply login.

Adding a new HD Smart Wi-Fi Camera

1. Turn on Wi-Fi on your phone and connect to the local/home network.
2. Power on the camera by connecting the USB power cable.
3. Wait for about 20 seconds until you hear the startup sound and then wait for the voice prompt “wait for wifi config.” If a reset is required, use the reset pin to press the Reset button on top of the camera for several seconds until the camera starts to beep.
4. Open the Smart Life App, click on the “+” button in the upper right corner, select “Add Device,” then “Cameras and Locks,” and finally select “Smart Wi-Fi Camera” to add a new camera to your App.
5. If the indicator on the camera is still flashing quickly or you still hear the “wait for wifi config” voice prompt, click “next step.” Otherwise, reset the camera first.

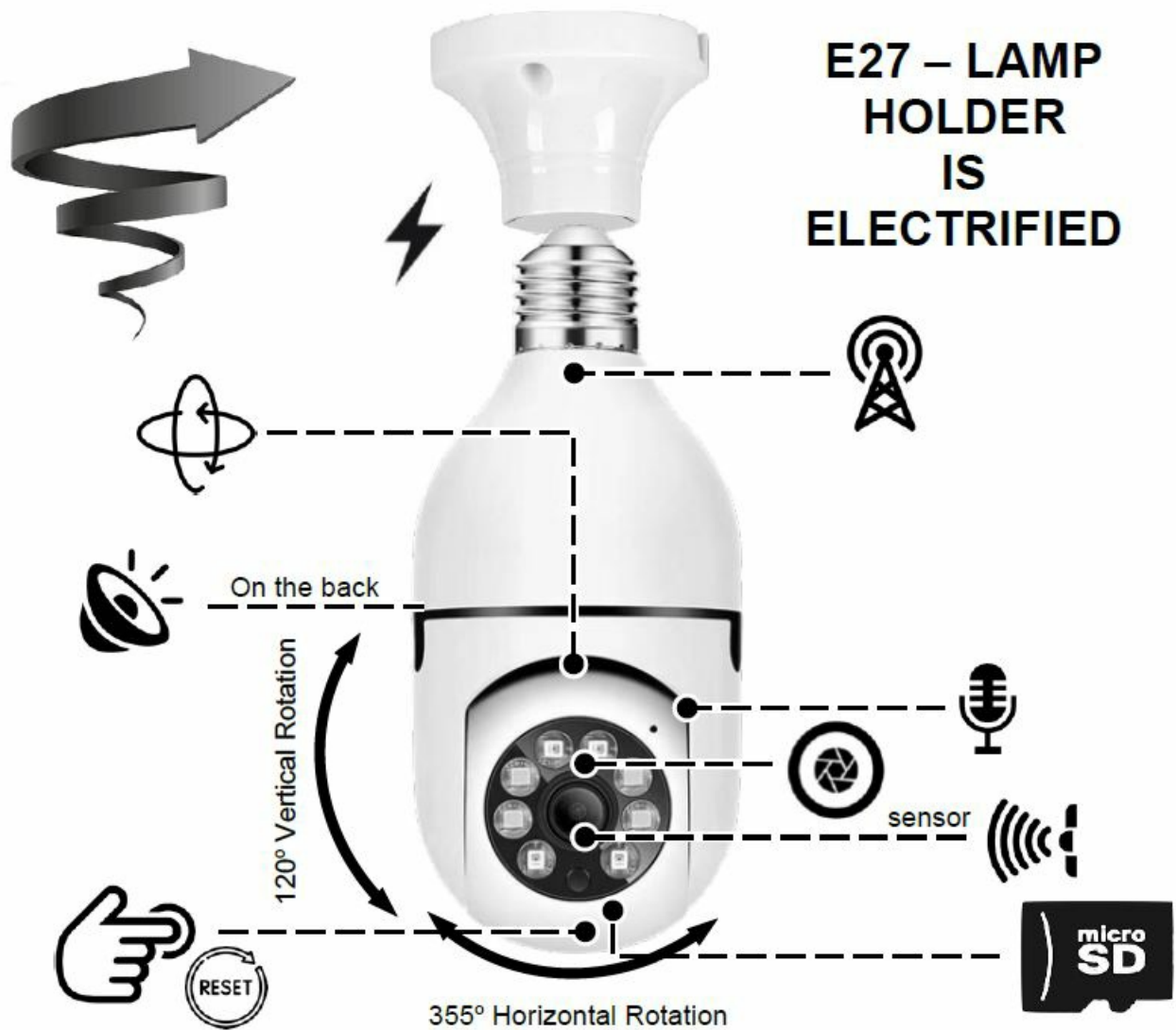
Note: Ensure that your phone is connected to the 2.4GHz WiFi band of your router as the device does not support 5GHz WiFi bands.

Features And Specifications

Features

- Indoor 1080p smart wifi-camera with built-in microphone and speaker
- **Smart:** Works via the Tuya smarthome platform – easy smart control via the “SmartLife” app
- **Universal:** Can be embedded in any existing Tuya based smart home solution and combined with any other Tuya compatible products
- Easy and quick installation in a standard E27 light socket
- Practical microSD slot for easy video recording and capturing snapshots
- Rotates up to 355° horizontally and tilts up to 120° vertically
- IR night vision, motion detection and alarm notifications via mobile app

Product Features



Specifications

- **Wi-Fi standard:** 802.11 b/g/n
- **Frequency Range:** 2.4 GHz ~ 2.4835 GHz, antenna gain 3 dBi
- **Max. Transmit power:** 17.68 dBm (802.11b)
- **Sensor:** CMOS 2 Mega pixels
- **Viewing angle:** 120
- **Lens type/specs:** 1/2.9", 3.6 mm lens system, F = 2.0
- **Video format:** H.264 AVI
- **Supported resolutions:** max. 1920 x 1080
- **Sound SNR:** 48 dB
- Built-in speaker
- Built-in IR backlight and IR-CUT filter
- MicroSD card up to 128 GB supported
- **AC power connection:** E27 lamp socket
- **AC power consumption:** 100 V – 240 V AC, 50 Hz/60 Hz, max 0.5 A
- **Dimensions:** 155 mm x 50 mm x 50 mm
- **Weight:** 0.3 kg
- **Operating conditions:** 0-55 Celsius degrees at 10-90 % humidity

- FOR INDOOR USE ONLY

Multiple Platform Support

Multiple Platform monitor, support most popular smartphone and computer



APP and compatibility



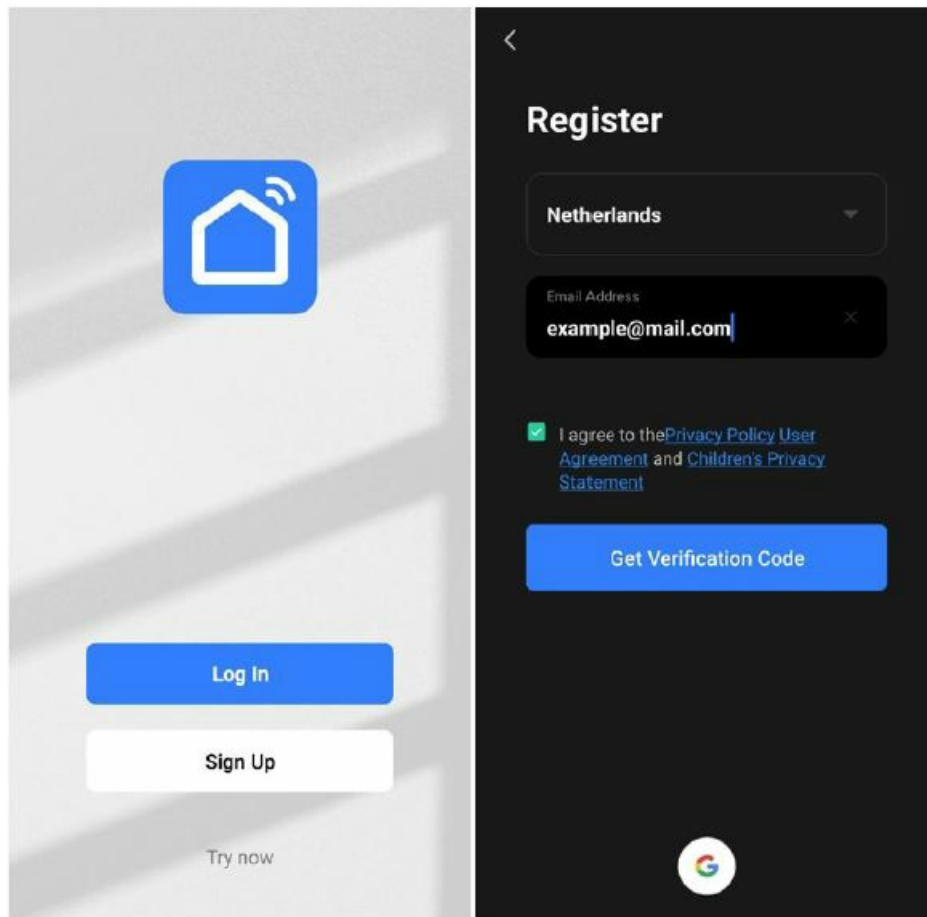
- This Smart Wi-Fi Camera is compatible with the Tuya “Smart Life” app and is compatible with all smart devices

that work with the Tuya smart home platform.

- You can download the app via below QR code, or you can download from the app store on your phone.
- This Smart Wi-Fi Camera and App is compatible with the devices using iOS 8.0 and above with Wi-Fi option, or Android 5.0 and above with Wi-Fi option.
- This device does not currently support 5GHz WiFi bands. Please see that your phone is connected to 2.4GHz WiFi band of your router.

Operating Instructions

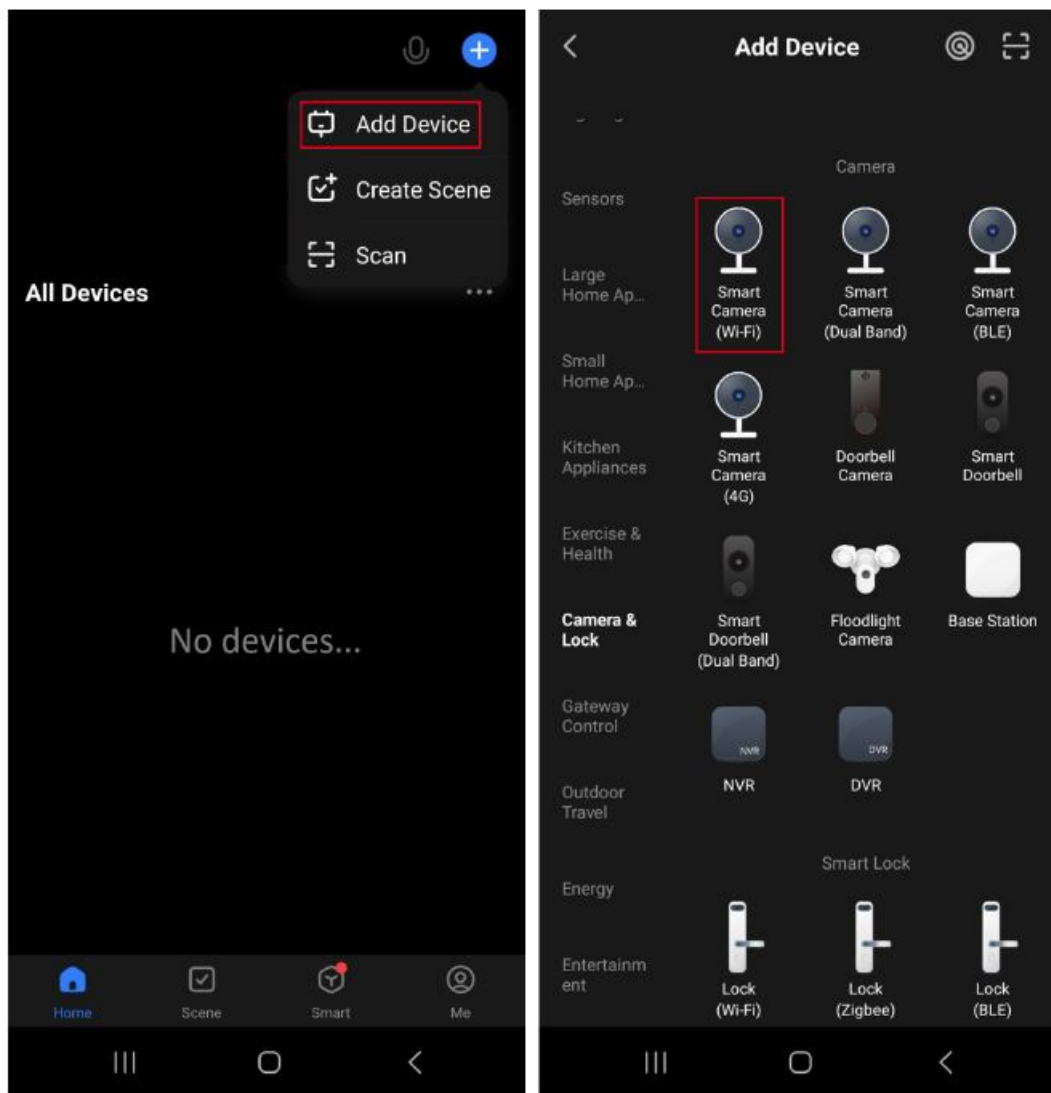
Login to the App



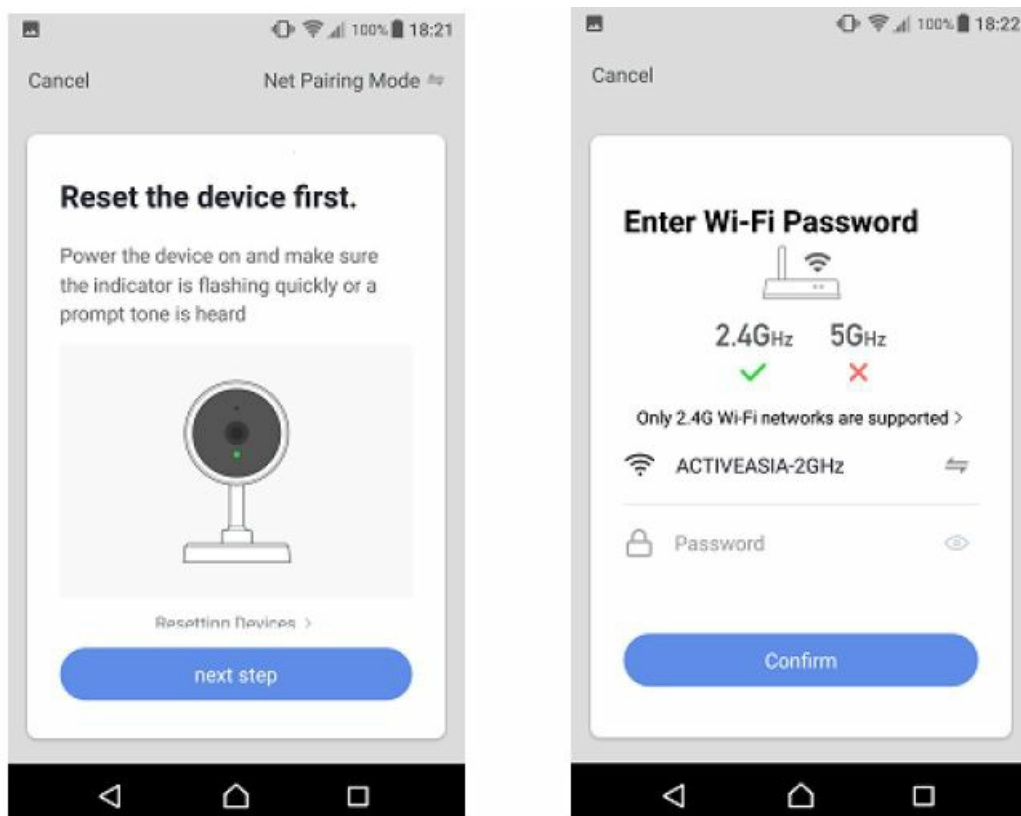
1. Search for, and download / install the “Smart Life” App on your phone or tablet.
2. Open the App, and it will ask you to register your user account. Select your country, enter your email, get Verification Code and input a secure password to confirm. If you already have a Smart Life account, you can just login.

Adding a new HD Smart Wi-Fi Camera

1. Turn on Wi-Fi of your phone, and then connect to the local/home network.
2. Power on the camera: Connect the USB power cable.
3. Wait for about 20 seconds until you hear the startup sound, then wait until you hear a voice prompt ‘wait for wifi config’.
 - **[Note:** If reset is required, use the reset pin to press the Reset button on top of the camera for several seconds until the camera starts to beep.]



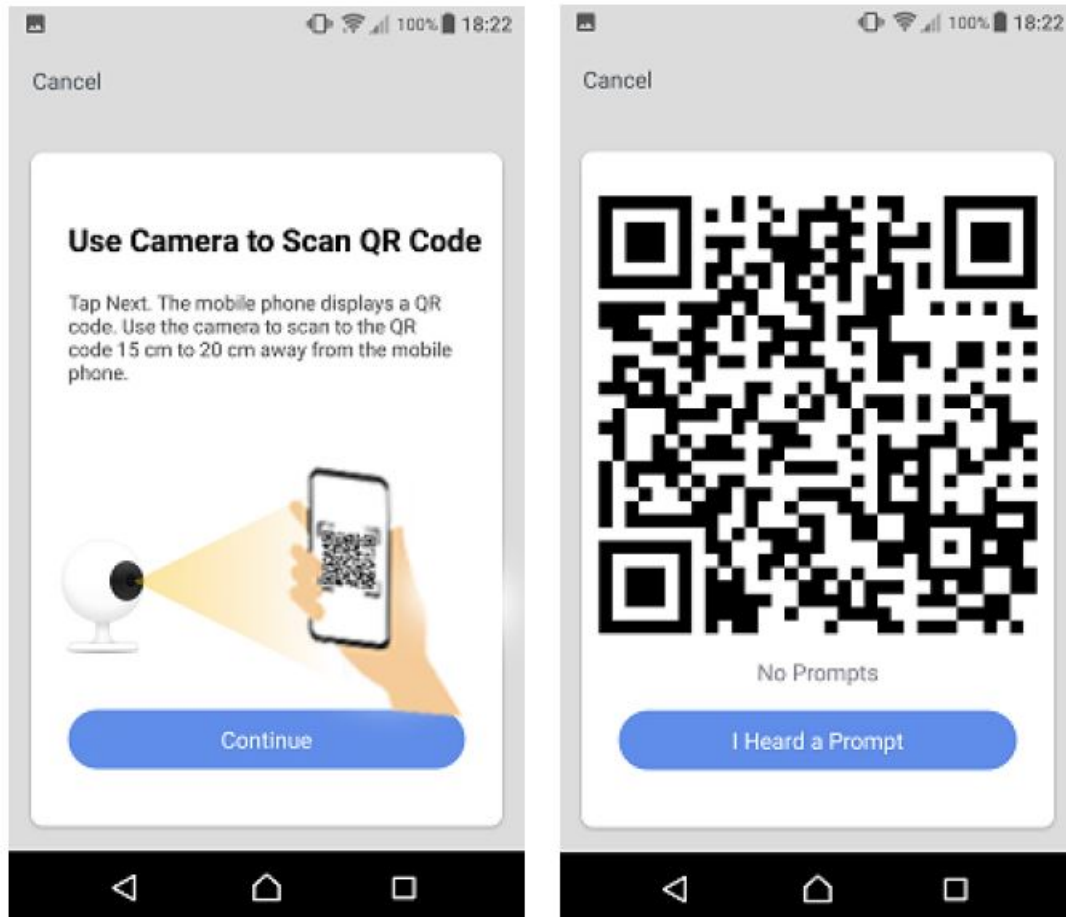
4. Turn on the “Smart Life” App, click ‘+’ in the upper right corner, select ‘Add Device’ and then ‘Cameras and Locks’ and finally select ‘Smart wifi Camera’ to add a new SmartWi-Fi Camera on your App.



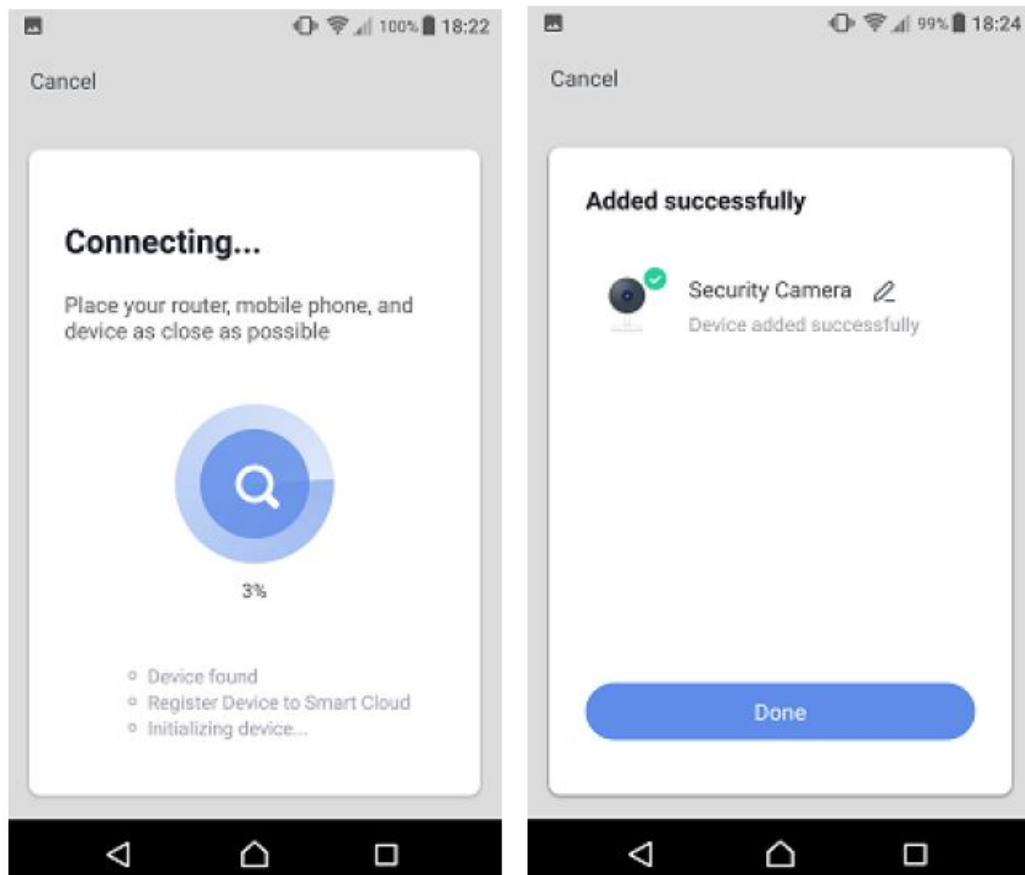
5. If the indicator on the camera is still flashing quickly, or you still hear ‘wait for wificonfig’ voice prompt, click

'next step'. Otherwise, reset the camera first.

6. Select the same connected Wi-Fi network of your phone or tablet and input password of the Wi-Fi, then tap 'Confirm'.



7. Tap 'Continue', the mobile phone will display a QR code. Hold the phone in front of the camera lens, so the camera can scan the QR code. Hold the phone steady, approximately 15 – 20 cm away from the camera lens.



8. The camera will make a sound or voice prompt to let you know the wifi connection was successful. click 'I

Heard a Prompt' when you hear a prompt sound from your camera. The HD Smart Wi-Fi Camera is trying to connect to the App. Once connected successfully, the App will show 'Added successfully' & 'Security Camera Device added successfully' with a voice message 'camera online'.

9. Tap 'Done' to view the live stream of your camera.

- Storage Settings, Remove Device...etc.
 - **Note:** Micro SD Card (not included) will perform Event Recording or Non-Stop Recording. Upon reaching its maximum storage capacity, it will automatically record over the oldest recording. This will erase the oldest recording, and replace it with the new recording. For longer access to important recordings, it is recommended to move the recordings from the Micro SD card to your computer etc. Recorded videos can be seen under the Playback icon.
- **Detection Alarm Settings:** Tap on "Detection Alarm Settings" can then turn on/off the Motion Detection Alarm. Once this is turned on, if any motion is detected you will get notification. Notifications can be checked on the "Message" tab of the App. Motion Alarm Sensitivity Level can be set:
 - **Low Sensitivity:** Records any movements within 5 meters
 - **Medium Sensitivity:** Records any movements within 10 meters
 - **High Sensitivity:** Records any movements within 15 meters
- **Remove Device:** Tap on "Remove Device" if you'd like to delete this camera.

GENERAL INFORMATION AND SAFETY

GENERAL INFORMATION

- This product has been manufactured by or on behalf of Gembird Europe B.V.. Inquiries to the EU Importer or related to product compliance in Europe should be sent to: Gembird Europe B.V., Wittevrouwen 56, 1358 CD, Almere, The Netherlands. www.gmb.nl
- **Warranty conditions:** www.gmb.nl/warranty
- **Product support:** www.gmb.nl/service and/or helpdesk@gembird.nl

SAFETY

- To ensure safe handling of the product, follow the safety advice on: www.gmb.nl/safety

DECLARATION OF CONFORMITY

Hereby, Gembird Europe B.V., declares that this equipment is in compliance with Directive 2014/53/EU (RED). The full text of the EU declaration of conformity is available at the following internet address: www.gmb.nl/certificates

WASTE DISPOSAL

The symbol of the crossed-out wheeled bin means that this appliance must not be disposed of with household waste at the end of its useful life. The appliance must be disposed of in specially set-up collection points, recycling yards or disposal companies. Retailers of electrical appliances with a sales area of at least 400 m² for electrical appliances and grocers with an area of 800 m², which offer electrical equipment several times a year, are obliged to take back electrical equipment. Return and disposal are free of charge for you. When you purchase a new device, you have the right to return a corresponding old device free of charge. Please delete all personal data

before returning the appliance. Before returning, please remove the batteries or re-chargeable batteries that are not enclosed by the old device, as well as lamps that can be removed without destruction, and dispose them to a separate collection.


GEMBIRD EUROPE B.V.

<http://www.gembird.eu>

All brands and logos are registered trademarks of their respective owners



Documents / Resources

	<p>gembird TSL-CAM-WRHD-01 Smart Rotating WiFi Camera [pdf] User Manual TSL-CAM-WRHD-01 Smart Rotating WiFi Camera, TSL-CAM-WRHD-01, Smart Rotating WiFi Camera, Rotating WiFi Camera, WiFi Camera, Camera</p>
--	--

References

- [Gembird](#)
- [Gembird](#)
- [Gembird - world leader in the production of computer hardware](#)
- [Gembird - world leader in the production of computer hardware](#)
- [Service](#)
- [Safety information](#)
- [Service](#)
- [Warranty conditions](#)
- [User Manual](#)