



gembird NIC-GX1 Gigabit Ethernet PCI-Express Card, Realtek Chipset User Manual

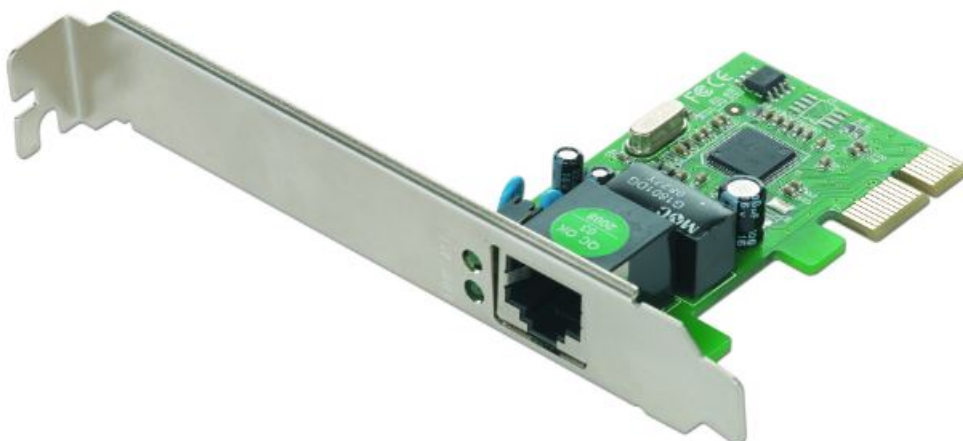
[Home](#) » [GEMBIRD](#) » gembird NIC-GX1 Gigabit Ethernet PCI-Express Card, Realtek Chipset User Manual 

Contents

- [1 gembird NIC-GX1 Gigabit Ethernet PCI-Express Card, Realtek Chipset](#)
- [2 Features](#)
- [3 Specifications](#)
- [4 Installation](#)
- [5 Connection](#)
- [6 Declaration of conformity](#)
- [7 Waste disposal](#)
- [8 WARRANTY CONDITIONS](#)
- [9 Documents / Resources](#)
- [10 Related Posts](#)



gembird NIC-GX1 Gigabit Ethernet PCI-Express Card, Realtek Chipset



Features

- Gigabit PCI-Express LAN add-on card
- Single STP RJ45 port for either 1000 Mbps, 100 Mbps or 10 Mbps network speeds
- Supports speed auto-negotiation, pair swap/polarity/skew correction, crossover detection
- Automatic IRQ and I/O address setup
- Supports Microsoft Windows, MAC OS, Unix/Linux, Novell

Specifications

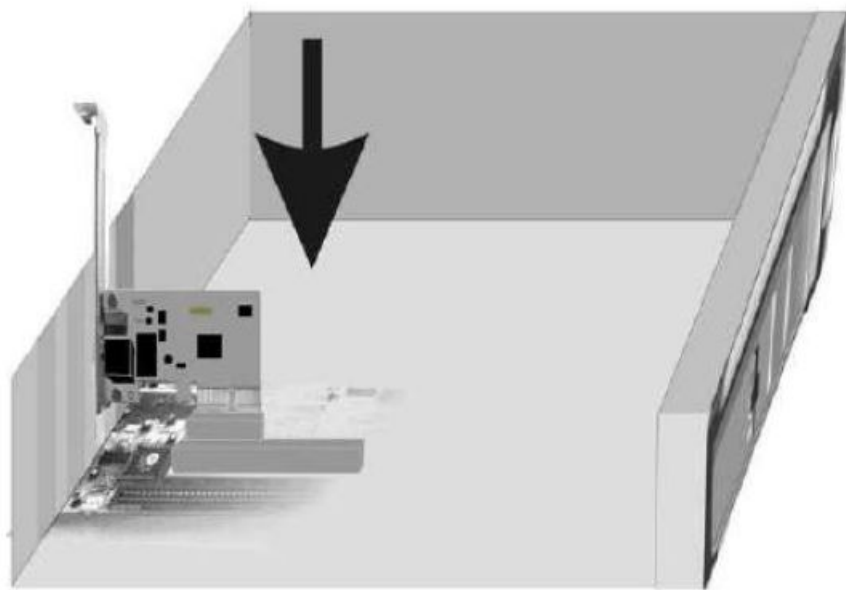
- Supports PCI-Express bus v.1.0a
- Compliant with IEEE802.3ab 1000BASE-T Gigabit Ethernet standard, IEEE802.3u Fast Ethernet standard, IEEE 802.3
- Supports IEEE 802.1Q VLAN tagging
- Supports IEEE802.1P Layer 2 Priority Encoding
- Supports Full Duplex flow control (IEEE 802.3x), power saving, Wake-on-LAN, remote wake-up, PCI Message Signaled Interrupt (MSI)
- **Chipset:** RTL8111C
- **Dimensions:** 120 x 80 x 20 mm, x1 slot
- **Net weight:** 32 g

Installation

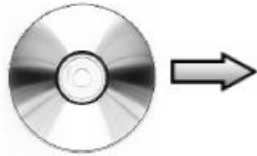
1



2



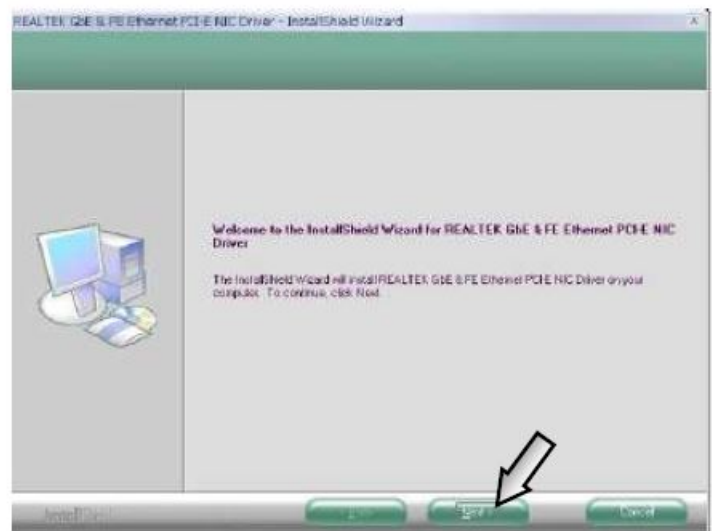
3



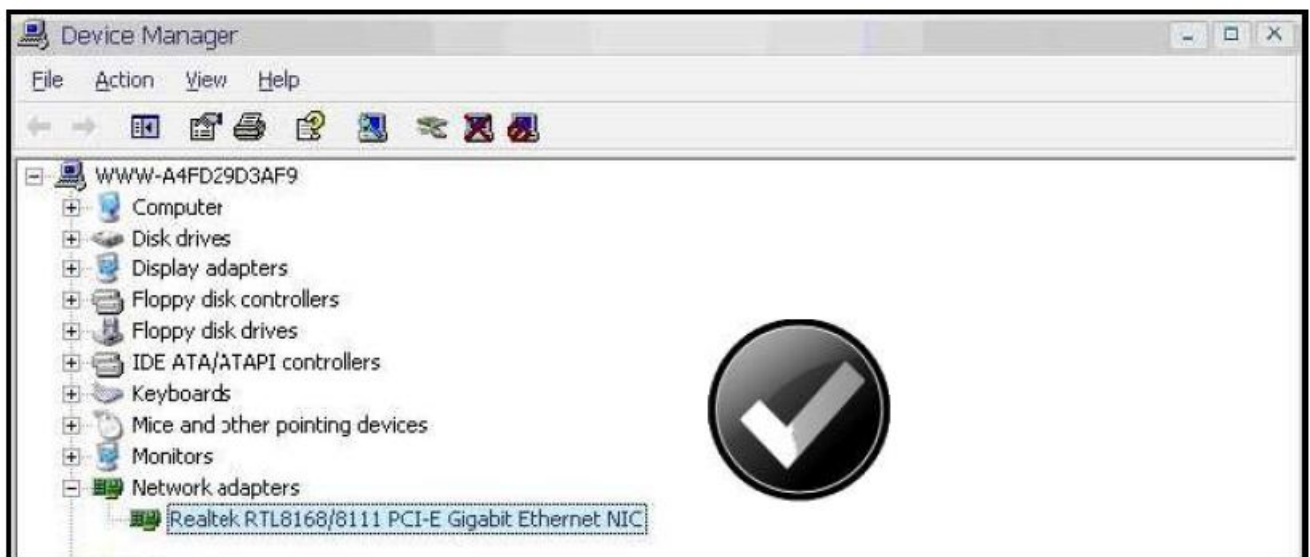
4



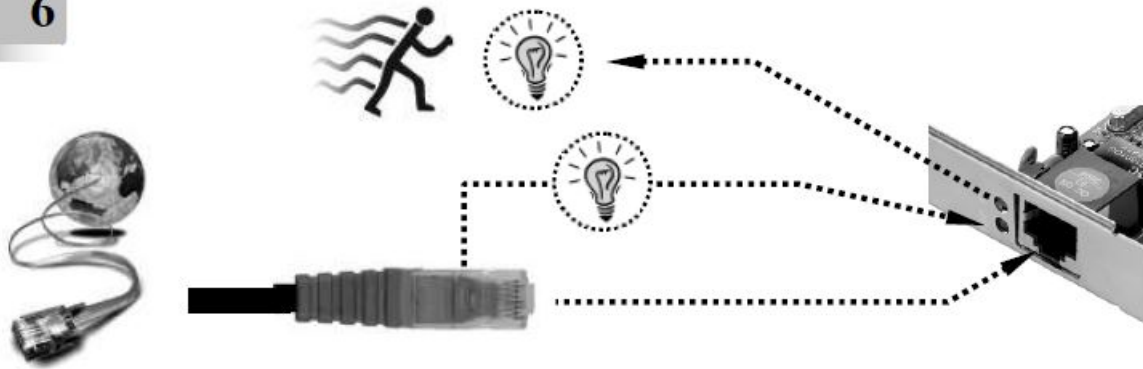
setup
Setup.exe
Macrovision Corporation



5



Connection



Declaration of conformity

This product is tested and complies with the essential requirements of the laws of member states concerning EMC(2014/30/EU), RoHS (2011/65/EU). The CE declaration can be found at www.gembird.eu.



Waste disposal

Do not deposit this equipment with household waste. Improper disposal can harm both the environment and human health. For Information about waste collection facilities for used electrical and electronic devices, please contact your city council or an authorized company for the disposal of electrical and electronic equipment.

WARRANTY CONDITIONS

The receipt must clearly list the date of purchase and the part number, in addition, it should be printed. Keep the receipt for the entire warranty period since it is required for all warranty claims. During the warranty period, the defective items will be credited, repaired, or replaced at the manufacturer's expense. Work carried out under the warranty neither extends the warranty period nor starts a new warranty period. The manufacturer reserves the right to void any warranty claim for damages or defects due to misuse, abuse, or external impact (falling down, impact, ingress of water, dust, contamination, or break). Wearing parts (e.g. rechargeable batteries) is excluded from the warranty. Upon receipt of the RMA goods, Gembird Europe B.V. reserves the right to choose between the replacement of defective goods or issuing a credit note. The credit note amount will always be calculated on the basis of the current market value of the defective products.

Gembird Europe B.V.

Wittevrouwen 56, 1358CD Almere, The Netherlands

www.gembird.nl/service.

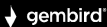
support@gmb.nl.

GEMBIRD EUROPE B.V.

<http://www.gembird.eu>.


All brands and logos are registered trademarks of their respective owners.

Documents / Resources



gembird

PODSUMOWANIE DOKUMENTU
Tytuł: gembird NIC-GX1 Gigabit Ethernet PCI-Express Card, Realtek Chipset
Autor: gembird
Data wydania: 2014-01-01
Data aktualizacji: 2014-01-01



NIC-GX1

[gembird NIC-GX1 Gigabit Ethernet PCI-Express Card, Realtek Chipset](#) [pdf] User Manual

NIC-GX1 Gigabit Ethernet PCI-Express Card Realtek Chipset, NIC-GX1, Gigabit Ethernet PCI-Express Card, Gigabit Ethernet Card, PCI-Express Card, Realtek Chipset, Chipset