



## **gembird MUSWB2 Bluetooth Mouse User Manual**

[Home](#) » [GEMBIRD](#) » gembird MUSWB2 Bluetooth Mouse User Manual 



**USER MANUAL  
MUSWB2**



**BLUETOOTH MOUSE  
BLUETOOTH MAUS  
BLUETOOTH MUIS  
SOURIS BLUETOOTH**

## Contents

[1 Features](#)

[2 Specifications](#)

[3 Documents /  
Resources](#)

[4 Related Posts](#)

## Features

- 6-button optical Bluetooth mouse
- Works with Bluetooth-enabled PCs, laptops and some tablets
- DPI button allows changing resolution (800/1200/1600 DPI)
- Next/Previous buttons for faster Internet browsing

## Specifications

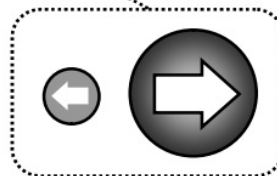
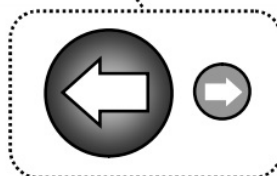
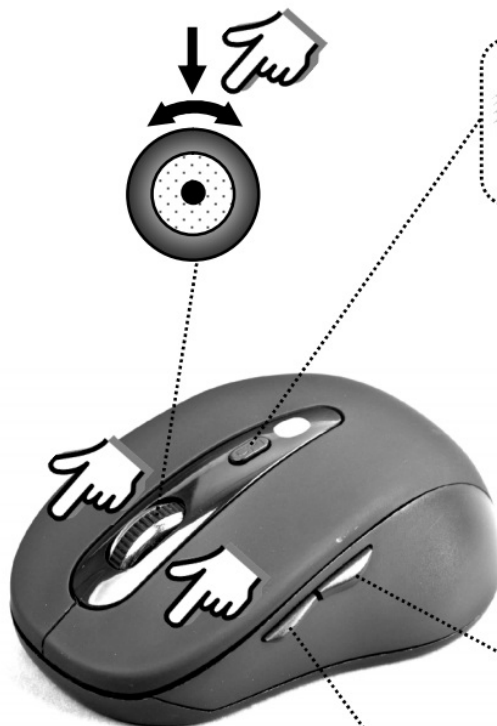
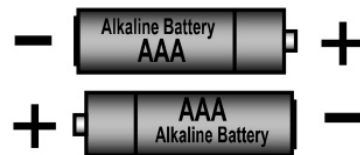
- Interface: Bluetooth
- Optical resolution: 800 – 1600 DPI
- Power class: RF power 3 dBm (max. EIRP)
- Internal antenna type; antenna gain in dBi (typical): 2 dBi  $\pm$ 1 dBi
- Power: 2 x AAA batteries
- Dimensions: 95 x 65 x 35 mm
- Net weight: 56 g
- Compatible with:

Windows 98SE/ME/2000/XP/VISTA/Windows 7/8/10



**GEMBIRD EUROPE B.V.** <http://www.gembird.eu>

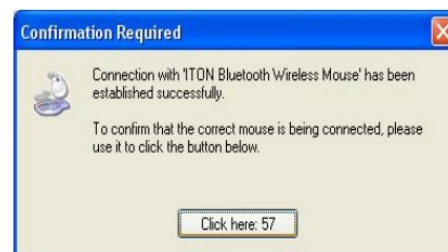
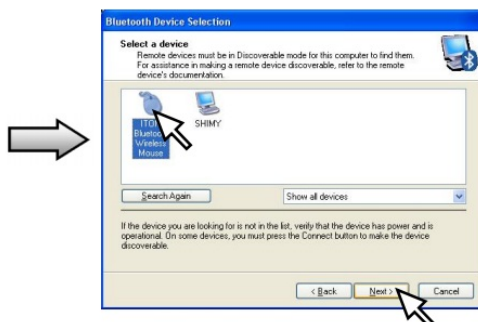
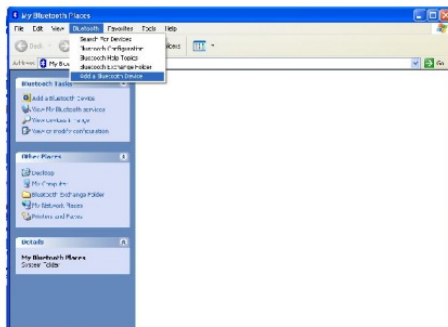
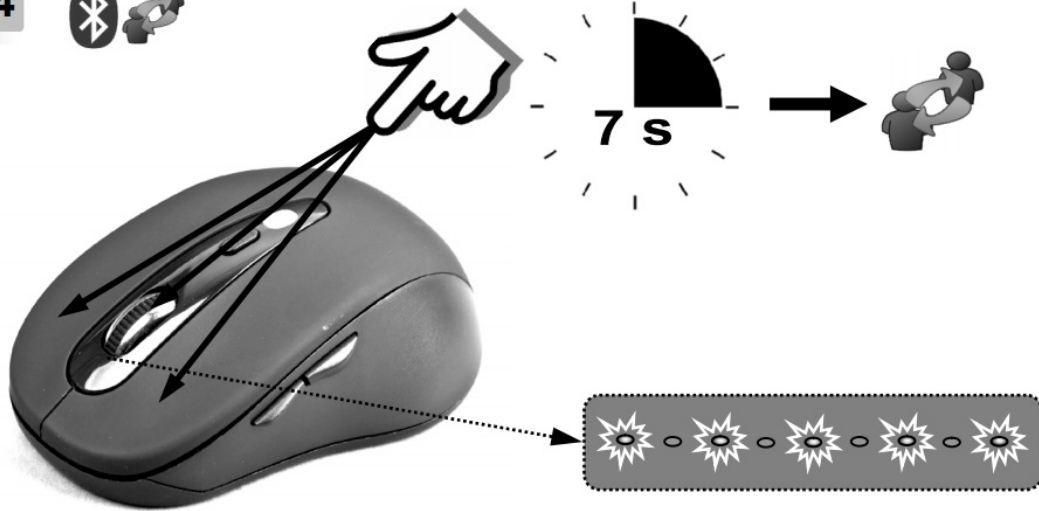
All brands and logos are registered trademarks of their respective owners



3

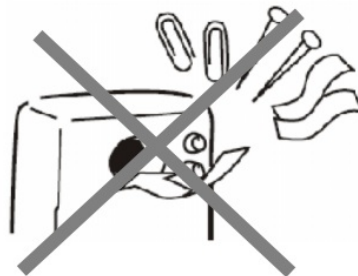
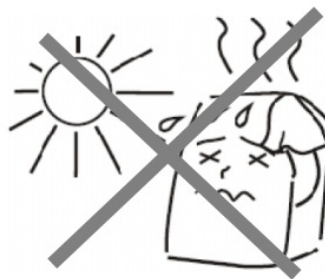


4



### Declaration of conformity

This product is tested and complies with the essential requirements of the laws of member states concerning RED (2014/53/EU), RoHS (2011/65/EU). The CE declaration can be found under [www.gamebird.eu](http://www.gamebird.eu)



### Waste disposal:

Do not deposit this equipment with the household waste. Improper disposal can harm both the environment and human health. For information about waste collection facilities for used electrical and electronic devices, please contact your city council or an authorized company for the disposal of electrical and electronic equipment.

### WARRANTY CONDITIONS



The receipt must clearly list the date of purchase and the part number, in addition, it should be printed. Keep the receipt for the entire warranty period since it is required for all warranty claims. During the warranty period, the defective items will be credited, repaired, or replaced at the manufacturer's expense. Work carried out under the warranty neither extends the warranty period nor starts a new warranty period. The manufacturer reserves the right to void any warranty claim for damages or defects due to misuse, abuse, or external impact (falling down, impact, ingress of water, dust, contamination or break). Wearing parts (e.g. rechargeable batteries) are excluded from the warranty. Upon receipt of the RMA goods, Gembird Europe B.V. reserves the right to choose between replacement of defective goods or issuing a credit note. The credit note amount will always be calculated on the basis of the current market value of the defective products. Gembird Europe B.V. Wittevrouwen 56, 1358CD Almere, The Netherlands

[www.gembird.nl/service](http://www.gembird.nl/service) [support@gmb.nl](mailto:support@gmb.nl)

**GEMBIRD EUROPE B.V.** <http://www.gembird.eu>

All brands and logos are registered trademarks of their respective owners

### Documents / Resources

	<a href="#">gembird MUSWB2 Bluetooth Mouse</a> [pdf] User Manual MUSWB2, Bluetooth Mouse
	<a href="#">gembird MUSWB2 Bluetooth Mouse</a> [pdf] User Manual MUSWB2 Bluetooth Mouse, MUSWB2, Bluetooth Mouse, Mouse