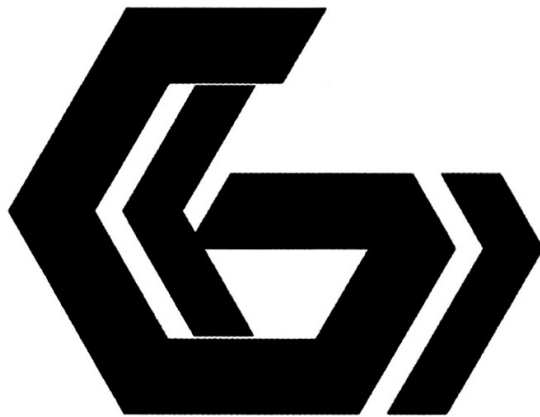




gembird JPD-PS4BT-01 Wireless Game Controller for Playstation 4 User Manual

[Home](#) » [GEMBIRD](#) » gembird JPD-PS4BT-01 Wireless Game Controller for Playstation 4 User Manual



GMB GAMING

JPD-PS4BT-01

USER MANUAL

HANDBUCH HANDLEIDING



WIRELESS GAME CONTROLLER FOR PLAYSTATION 4 OR PC

Contents [[hide](#)]

- [1 Features](#)
- [2 Specifications](#)
- [3 Declaration of conformity](#)
- [4 WARRANTY CONDITIONS](#)
- [5 Documents / Resources](#)
- [6 Related Posts](#)

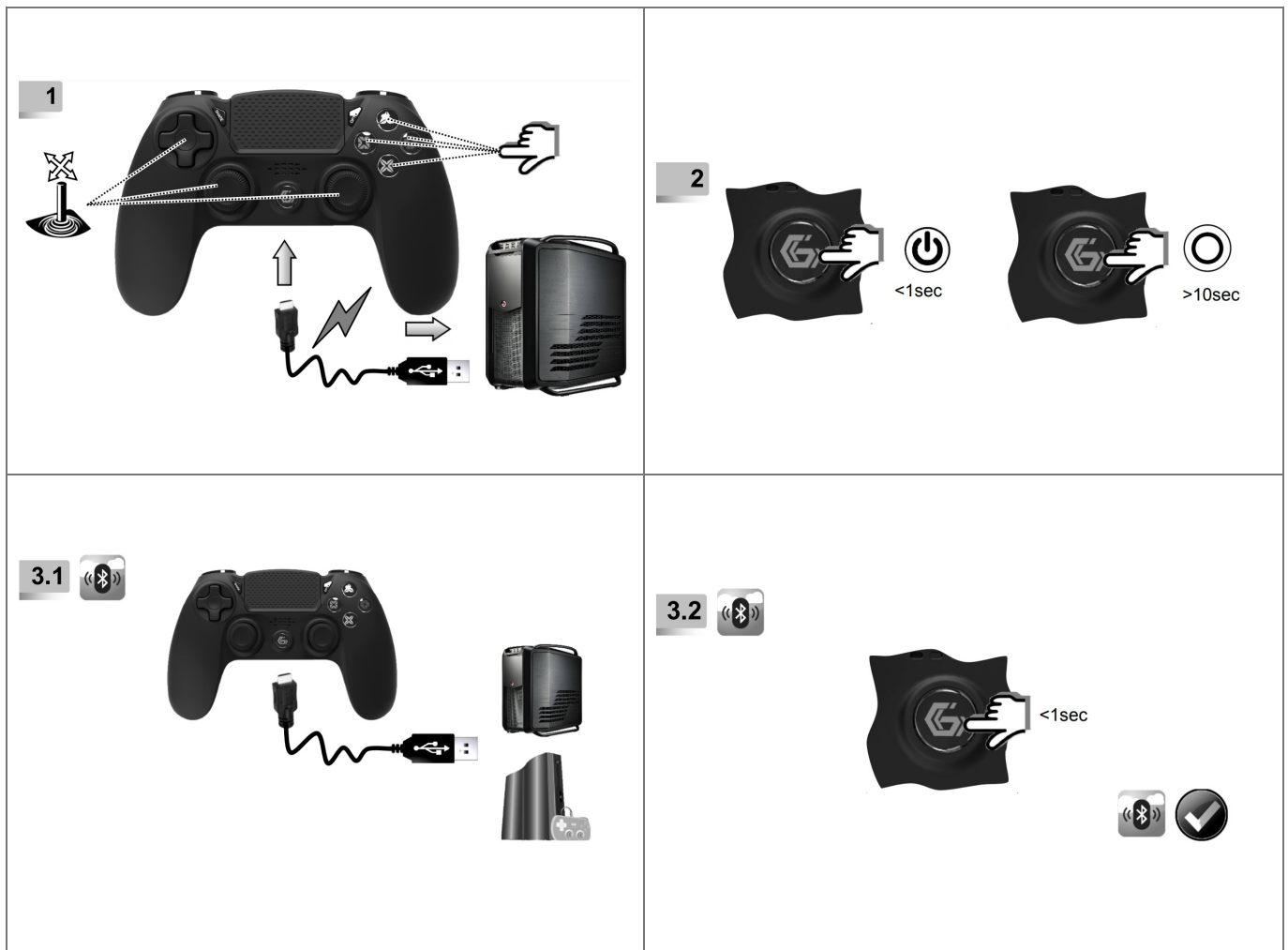
Features

- Wireless Bluetooth game controller for PlayStation 4 or PC
- Standard PS4 configuration: 2 analog joysticks, 4-way D-pad, and 8 action buttons
- Dual vibration and headset socket
- Colored LED light bar and practical backlight for the action buttons

Specifications

- Interface: Bluetooth 2.1+EDR
- Buttons: PS, Share, Option, ↑, ↓, ←, →, X, ○, □, △, L1, L2, L3, R1, R2, R3, RESET
- Battery: Li-Ion, 600 mAh
- Headset socket: 3.5 mm CTIA 4-pin
- Charging port: micro-USB
- Dimensions: 149 x 34 x 64 mm
- Net weight: 194 g





On PC (wired connection)

Connect controller into PC via charging cable in the package. All LEDs light on can play games directly. If not install automatically you can download drivers under the support tab.

On PS4 Console (both wired and Bluetooth connections are available).

Wired Connection

Plug controller into PS4 console via charging cable and then press PS button (GG logo button)for 1s to start

Wireless Bluetooth Connection

1. First time to connect the controller to the PS4 console.

Plug controller into PS4 console via charging cable and then press PS button (G logo button) for 1 second to start. And then you can remove the cable and use the controller in a wireless connection.

2. Reconnection.

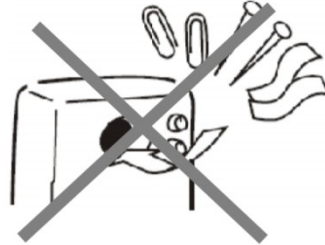
Press the PS button for 1 second to turn on the controller and it will connect automatically.

Turn off controller

Keep pressing the G button for 5 seconds to turn off the controller.



<https://gmb.nl/item.aspx?id=11705>



Declaration of conformity

This product is tested and complies with the essential requirements of the laws of member states concerning RED (2014/53/EU), RoHS (2011/65/EU). The CE declaration can be found under www.gembird.eu

Waste disposal:

Do not deposit this equipment with the household waste. Improper disposal can harm both the environment and human health. For Information about waste collection facilities for used electrical and electronic devices, please contact your city council or an authorized company for the disposal of electrical and electronic equipment.

WARRANTY CONDITIONS

The receipt must clearly list the date of purchase and the part number, in addition, it should be printed. Keep the receipt for the entire warranty period since it is required for all warranty claims.

During the warranty period, the defective items will be credited, repaired, or replaced at the manufacturer's expense. Work carried out under the warranty neither extends the warranty period nor starts a new warranty period. The manufacturer reserves the right to void any warranty claim for damages or defects due to misuse, abuse, or external impact dust, contamination, or break (falling down, impact, ingress of water,). Wearing parts (e.g. rechargeable batteries) are excluded from the warranty. Upon receipt of the RMA goods, Gembird Europe B.V. reserves the right to choose

between replacement of defective goods or issuing a credit note. The credit note amount will always be calculated on the basis of the current market value of the defective products.

Gembird Europe B.V.

Wittevrouwen 56, 1358CD Almere,

The Netherlands www.gembird.nl/service

support@gmb.nl



GEMBIRD EUROPE B.V.

<http://www.gembird.eu>

All brands and logos are registered trademarks of their respective owners

Documents / Resources



[gembird JPD-PS4BT-01 Wireless Game Controller for Playstation 4](#) [pdf] User Manual
JPD-PS4BT-01, Wireless Game Controller for Playstation 4 or PC

[Manuals+.](#) [home](#) [privacy](#)