

↓ **gembird®**
**GEMMA2 3D
Printer**



Gembird GEMMA2 3D Printer User Guide

[Home](#) » [GEMBIRD](#) » Gembird GEMMA2 3D Printer User Guide 

Contents

- 1 Gembird GEMMA2 3D Printer
- 2 Product Information
- 3 Product Usage Instructions
- 4 SAFETY WARNINGS
- 5 ACCESSORIES
- 6 PRODUCT OVERVIEW
- 7 SPECIFICATION
- 8 UNBOXING
- 9 PRINT MORE MODELS USING THE COMPUTER
- 10 COMMON OPERATIONS
- 11 GENERAL INFORMATION
- 12 SAFETY
- 13 Documents / Resources
 - 13.1 References



Gembird GEMMA2 3D Printer



Product Information

This product is manufactured by Gembird Europe B.V. and is designed to provide [insert product purpose]. For warranty conditions and product support, please refer to the provided links or contact helpdesk@gembird.nl.

- **Manufacturer:** Gembird Europe B.V.
- **Address:** Wittevrouwen 56, 1358 CD, Almere, The Netherlands
- **Website:** www.gmb.nl

Product Usage Instructions

- **Step 1: Unboxing**
Open the product packaging carefully and remove all contents.
- **Step 2: Setup**
Follow the included user manual to set up the product correctly.
- **Step 3: Power On**
Connect the product to a power source and switch it on using the designated power button.
- **Step 4: Operation**
Use the product according to its intended purpose. Refer to the user manual for specific instructions on operation.
- **Step 5: Maintenance**
Regularly clean the product and follow any maintenance guidelines provided in the user manual to ensure optimal performance.

FAQ (Frequently Asked Questions)

- **Q: Where can I find warranty information?**

A: Warranty conditions can be found at www.gmb.nl/warranty.

- **Q: How do I contact product support?**

A: For product support, visit www.gmb.nl/service or email helpdesk@gembird.nl.

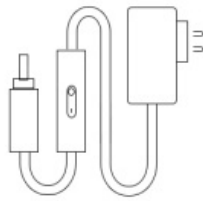
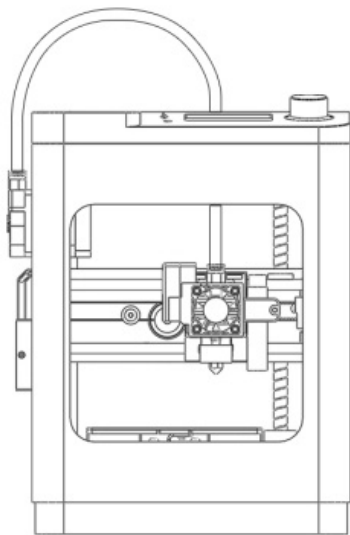
NOTES

Thank you for purchasing Gemma2. Please read this guide before using the device. This guide is only applicable to Gemma2. Once you use this product, it means that you have read and accepted the following safety warnings. Gemma2 doesn't have WiFi.

SAFETY WARNINGS

1. Do not touch the nozzle or stepper motors, when the 3D printer is printing or just finished the printing job, the nozzle temperature is up to 230°C.
2. Do not expose this device to water or moisture of any kind. Do not place drinks or other containers with moisture on or near the device. If moisture does get in or on the device, immediately unplug it from the power outlet and allow it to fully dry before reapplying power.
3. Before the operation, check the power cord for physical damage. Don't use it if physical damage has occurred.
4. Before plugging the unit into a power outlet, ensure that the outlet provides the same type and level of power required by the device.
5. Unplug this device from the power source when not in use.
6. Take care to prevent damage to the power cord. Do not allow it to become crimped, pinched, walked on, or become tangled with other cords. Ensure that the power cord does not present a tripping hazard.
7. Never unplug the unit by pulling on the power cord. Always grasp the connector head or adapter body.
8. Ensure that the 3D printer is turned off and unplugged from its power source before making repairs or performing service.

ACCESSORIES



Power



PLA filament



1.5/2.0/2.5 mm
L wrench



Type-C



Card reader



sticker
increase adhesion on
the platform



Spare nozzle
replace when severely
clogged



8 mm wrench
used for replacing
the nozzle



Cleaning needle
used to unclog the nozzle
for minor blockages



TF card

Test Models

Insert the TF card into the 3D printer and select the test model to begin printing.

Slicing Software

Wiibuilder | Customized Cura

Insert the TF card into the computer to get the installation package for the slicing software.

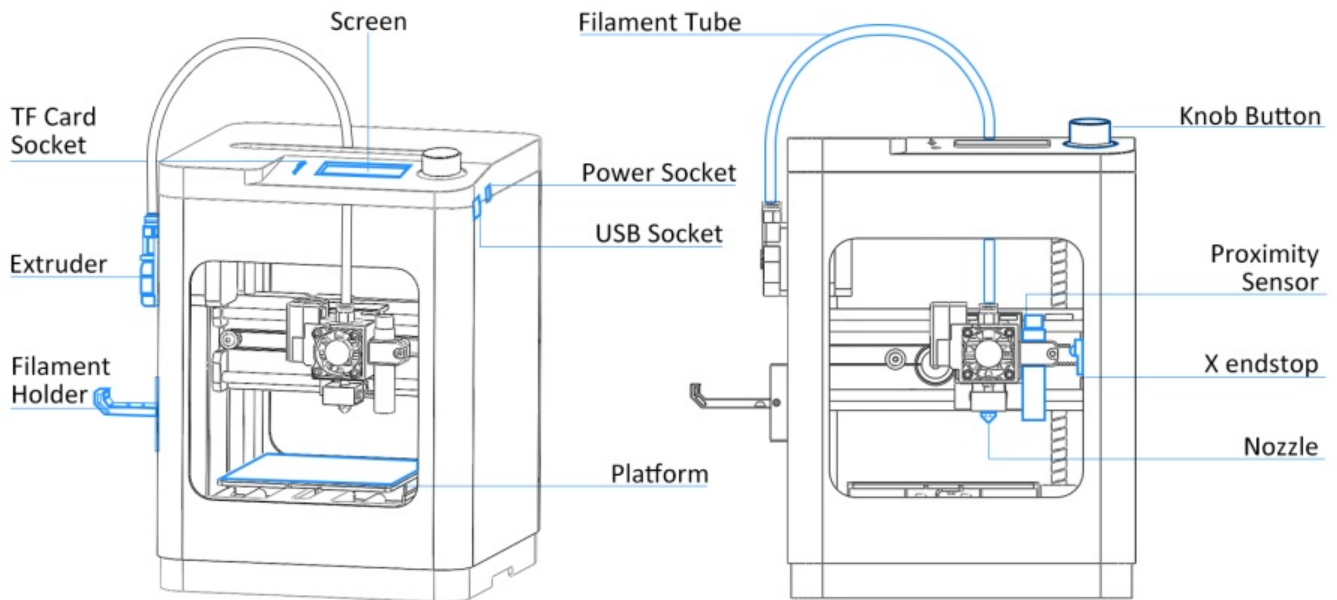
Manual

Instructions for using the 3D printer.



Do not insert or remove the TF card forcefully. After copying the G-code files from the computer to the TF card, use the system's eject option to safely remove the TF card. Removing it directly may damage the TF card.

PRODUCT OVERVIEW



SPECIFICATION

- **Model** Gemma2
- **Weight** 2.8Kg/6.2lb
- **Nozzle Temp** $\leq 245^{\circ}\text{C}$
- **Layer Thickness** 0.1~0.4mm
- **Product Volume** 210*210*290 mm
- **Nozzle Diameter** 0.4mm
- **Speed** $\leq 120\text{mm/s}$
- **Print Precision** $\pm 0.1\text{mm}$
- **Build Volume** 100*105*100 mm
- **Power Supply** 100V- 240V/12V@5A,60W
- **Input** TF Card / USB This version does not support WiFi
- **Leveling Tech** 9-Point Auto Bed Leveling
- **Motherboard** R72C
- **Platform** Soft magnetic plate
- **Environmental** $15^{\circ}\text{C} - 25^{\circ}\text{C}$

SOFTWARE

- **Slicing Software**
 - Wiibuilder (Win/Mac)
 - Cura (Win/Mac)
- **Input File Format** STL/OBJ/AMF
- **Print Format** Gcode

FILAMENT

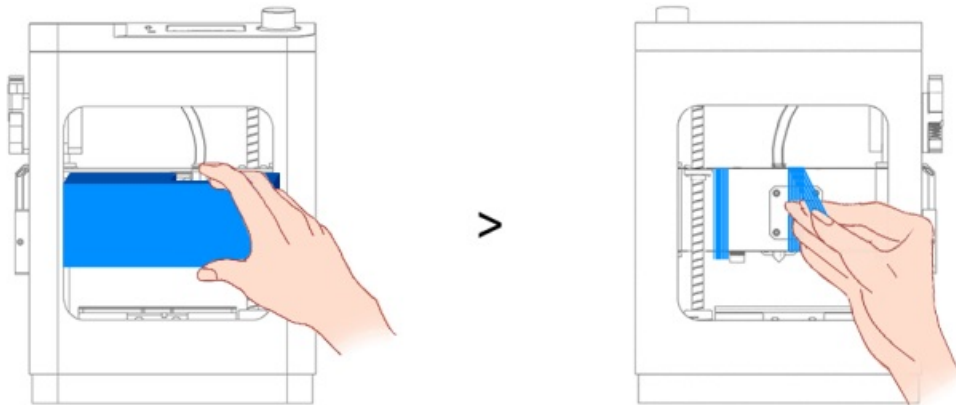
- **Filament Type** PLA / PLA+ / TPU

- **Filament Diameter** 1.75mm
- **Filament Temp** <245°C
- **Filament Capacity** ≤500g

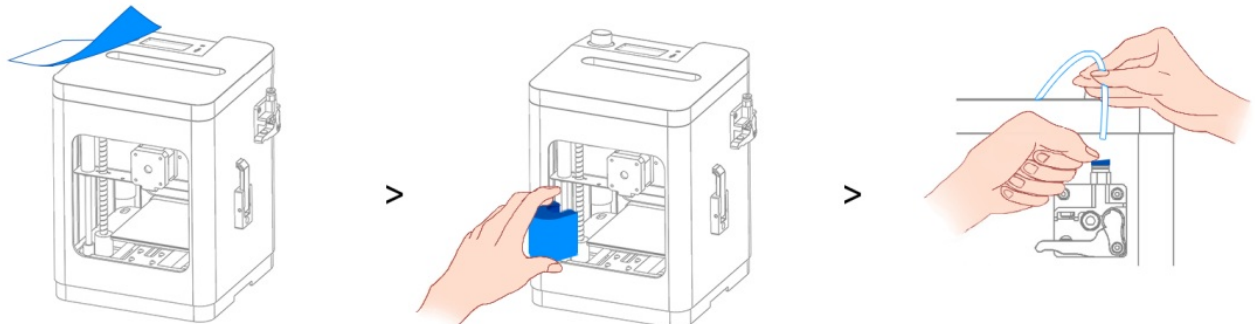
Please use the filament provided by our company. Filaments have different specifications, which can clog and damage the nozzle. If the 3D printer fails due to the other brand filament, the warranty will not be granted. If the filaments are not used for a long time, please keep them sealed.

UNBOXING

1. Remove the 3D printer and accessories from the box.
2. Remove all fixtures, and insert the filament tube.



1. Remove the bubble wrap.
2. Peel off the tapes.

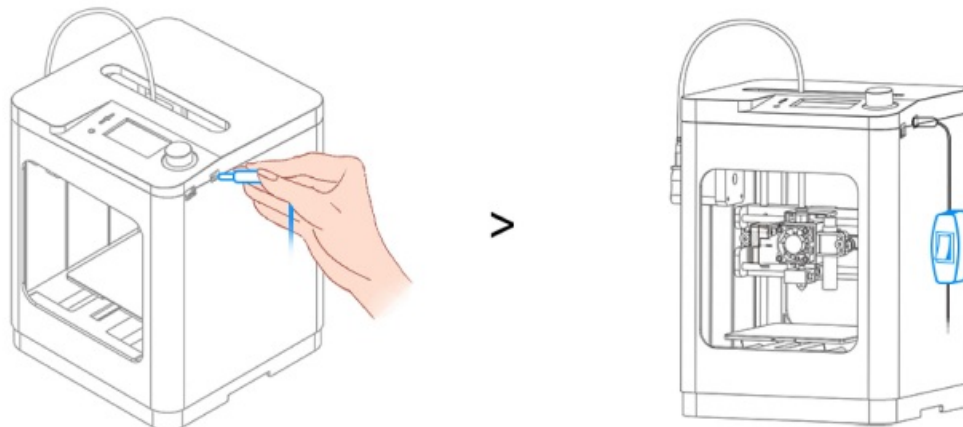


3. Remove the sticker.
 4. Remove the shaft coupling shell.
 5. Press tube fitting to insert filament tube into avtrudar.
3. Insert the TF card, plug in the power, and turn on it.
 1. Insert the TF card.

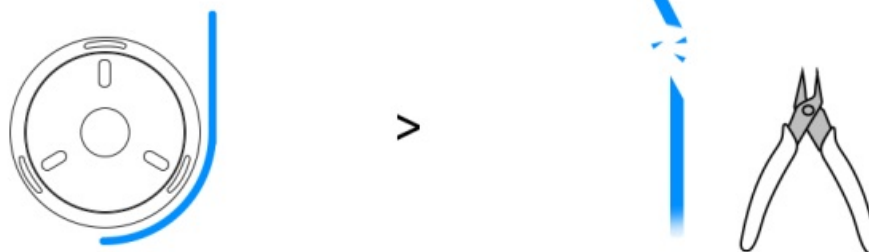
Pay attention to the direction, the card may get damaged.



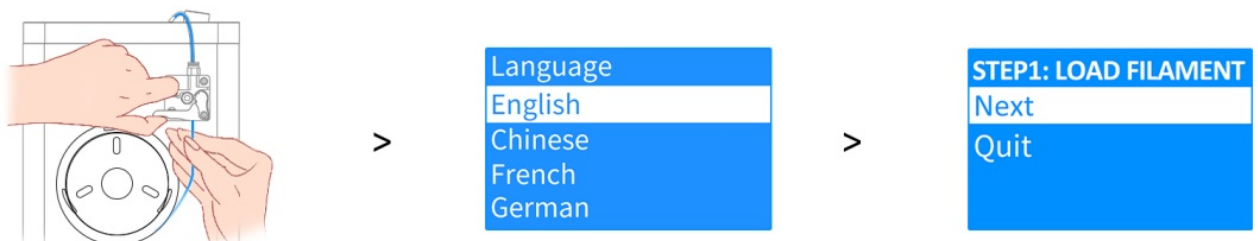
2. Plug in the power.
3. Turn on the printer.



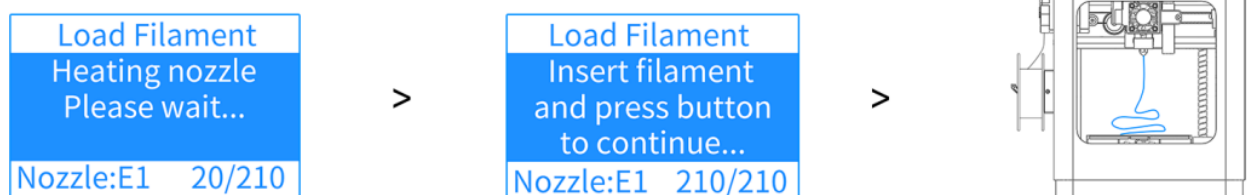
4. Insert the filament, and perform the loading operation.
 1. Get the filament.
 2. Cut a sharp edge to prevent clogging.



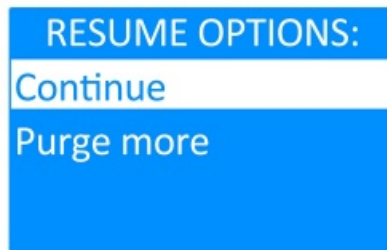
3. Insert filament until entering the nozzle.
4. Select the language.
5. Click "Next"



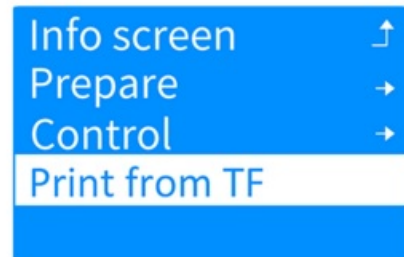
6. Wait for heating to 210°C.
7. Press button.
8. The filament comes out 10cm from the nozzle.



5. Start printing test models.
 1. Click "Continue".
 2. Click "Print from TF".



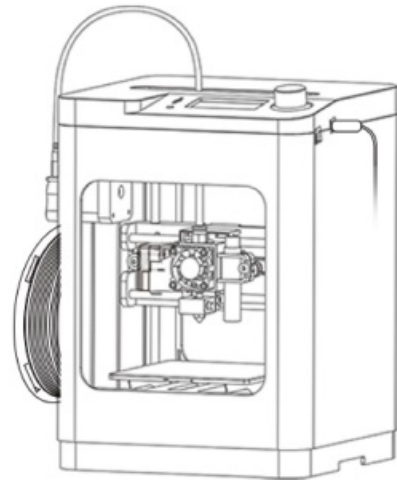
>



3. Select a model to print.
4. Start printing.

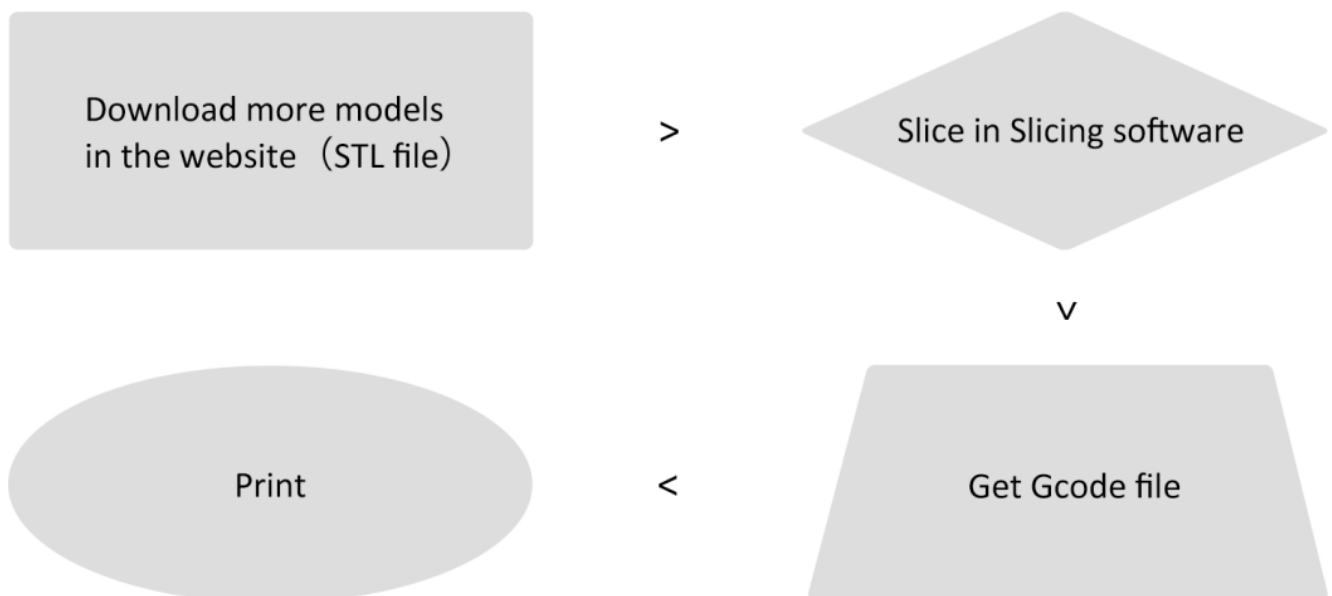


>



PRINT MORE MODELS USING THE COMPUTER

3D models downloaded from websites are usually STL files and cannot be directly recognized by 3D printers. The model needs to be processed in slicing software to generate Gcode files for printing.

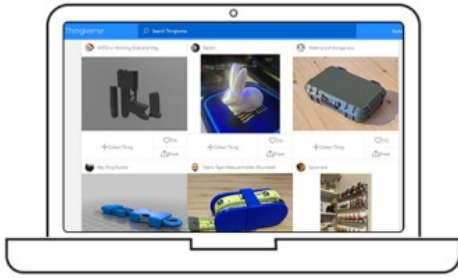


Note:

- Slicing software is installed on the computer. Common options: Wiibuilder, Cura.
- Wiibuilder is self-developed with a friendly interface and is recommended.

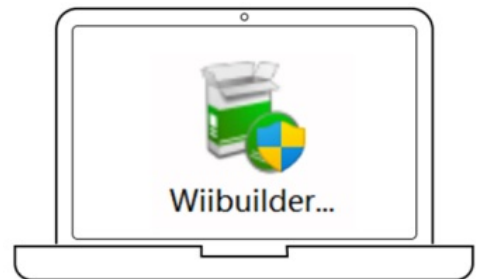
1. Download more models in the website.

1. Open a 3D model website, such as (Thingiverse, (Printables)
2. Select the model you want and download the STL file.



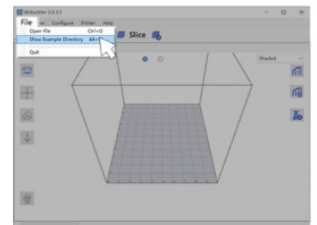
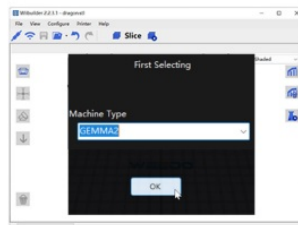
2. Install slicing software.

1. The installation is stored in the TF card, copy it to the desktop and unzip it.
2. Double-click the program to install Wiibuilder on the computer.

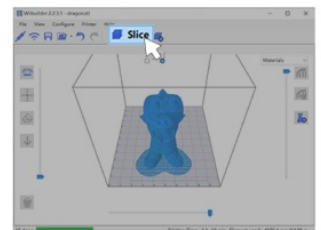
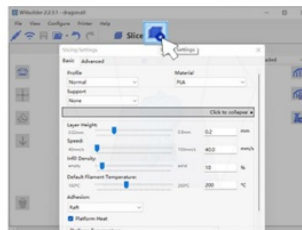
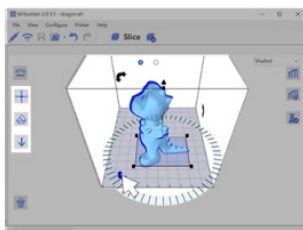


3. Slice in Slicing software, and get the Gcode file.

1. Open Wiibuilder.
2. Be sure to choose "GEMMA2".
3. Click "File" to load the STL file or just drag the model into it.



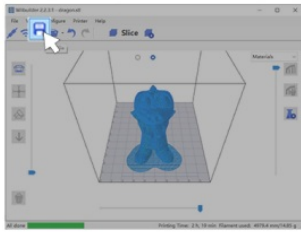
4. Click and adjust the model.
5. Set slicing parameters.
6. Click "Slice", and get the Gcode file.



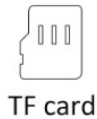
Note: For detailed slicing instructions, please refer to the user manual in the TF card.

4. Print via TF card.

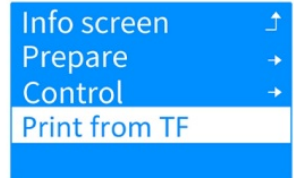
1. Click "Save File".
2. Save the Gcode file to the TF root.
3. Insert the TF card into the printer. Print the file.



>



>

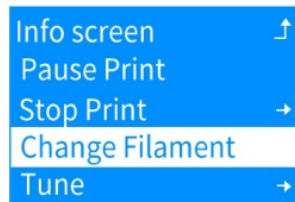


5. Change the filament.

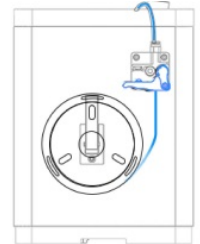
1. Press the button.
2. Click "Change filament"
3. Follow the instructions on



>



>



COMMON OPERATIONS

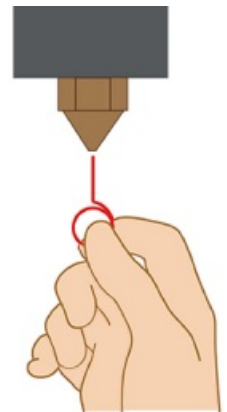
1. What should I do if the nozzle is clogged?

The nozzle will be clogged due to the damp filament, so the nozzle should be cleaned regularly. For general clogs, you can clear it using a cleaning needle. If the issue persists, the nozzle may need to be replaced.

1. Click "Load Filament" and wait for heating to 210°C.
2. Push a needle through the nozzle.



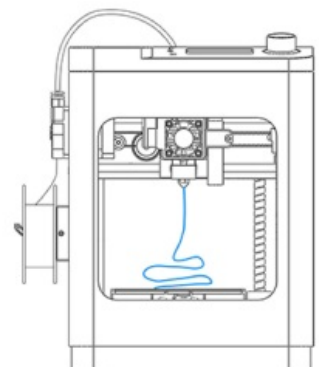
>



3. Press the button
4. If the blockage has been cleared, the filament will slip through the nozzle.



>



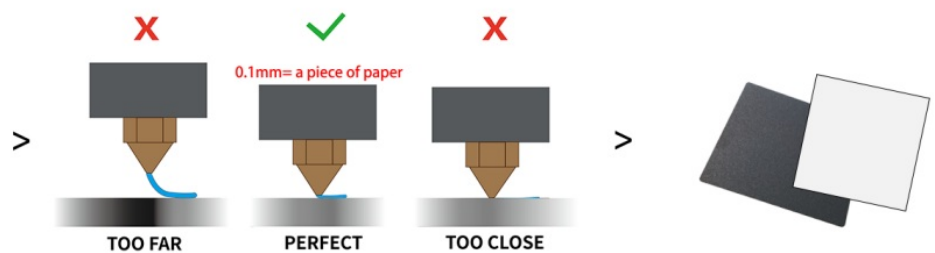
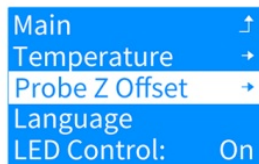
2. What should I do if my model doesn't stick?



A common issue with non-adhesion includes: (1) the first layer warping or detaching from the build plate; (2) the model detaching from the platform during printing; (3) the nozzle printing in mid-air, resulting in a mess of tangled filament.

You can resolve this using the following steps:

1. Use the Z-Offset function.
2. Adjust the nozzle-platform gap.
3. Change a new sticker.



GENERAL INFORMATION

This product has been manufactured by or on behalf of Gembird Europe B.V.. Inquiries to the EU Importer or related to product compliance in Europe should be sent to: Gembird Europe B.V., Wittevrouwen 56, 1358 CD, Almere, The Netherlands. www.gmb.nl

- Warranty conditions: www.gmb.nl/warranty
- Product support: www.gmb.nl/service and/or helpdesk@gembird.nl.



SAFETY

To ensure safe handling of the product, follow the safety advice on:

DECLARATION OF CONFORMITY


Hereby, Gembird Europe B.V., declares that this equipment complies with Directive LVD(2014/35/EU), EMC(2014/30/EU), and RoHS (2011/65/EU). The full text of the EU Declaration of Conformity is available at the following internet address: www.gmb.nl/certificates

Waste disposal:



■ The symbol of the crossed-out wheeled bin means that this appliance must not be disposed of with household waste at the end of its useful life. The appliance must be disposed of in a specially set-up collection points, recycling yards, or disposal companies. Owners of WEEE from private households can hand them in free of charge at the designated collection points of the public waste disposal authorities or the take-back points set up by manufacturers or distributors in terms of Directive 2012/19/EU. Please delete all personal data before returning the appliance. Before returning, please remove batteries or re-chargeable batteries that are not enclosed by the old device, as well as lamps that can be removed without destruction, and disposed them in a separate collection.

Documents / Resources

	Gembird GEMMA2 3D Printer [pdf] User Guide GEMMA2 3D Printer, GEMMA2, 3D Printer, Printer
---	--

References

- [Gembird - world leader in the production of computer hardware](#)
- [Service](#)
- [Service](#)
- [Warranty conditions](#)
- [User Manual](#)

Manuals+, Privacy Policy

This website is an independent publication and is neither affiliated with nor endorsed by any of the trademark owners. The "Bluetooth®" word mark and logos are registered trademarks owned by Bluetooth SIG, Inc. The "Wi-Fi®" word mark and logos are registered trademarks owned by the Wi-Fi Alliance. Any use of these marks on this website does not imply any affiliation with or endorsement.