

GEEVON GWB-003 Bluetooth WiFi Hub and Adapter User Manual

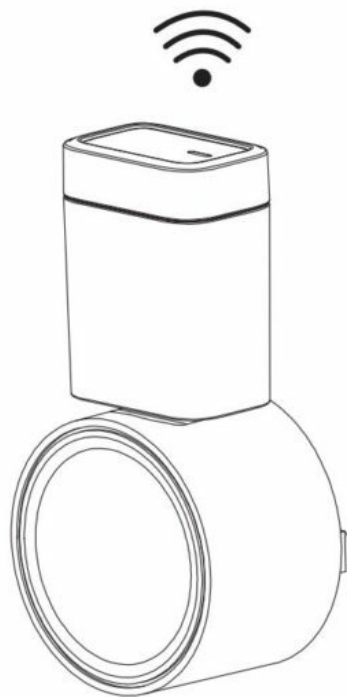
[Home](#) » [Geevon](#) » GEEVON GWB-003 Bluetooth WiFi Hub and Adapter User Manual 

GEEVON

Contents

- 1 GEEVON GWB-003 Bluetooth WiFi Hub and Adapter User Manual
- 2 Product Overview
- 3 2. Product Specifications
- 4 2. Add the Device
- 5 3. Add Bluetooth-Wifi Hub
- 6 4. Technical Support
- 7 Documents / Resources
 - 7.1 References

GEEVON GWB-003 Bluetooth WiFi Hub and Adapter User Manual



Product Overview

1. Product Appearance



2. Product Specifications

Input	100-200V-50-60Hz 0.35A
Output	5.0V-2000mA
Working Temperature	2 °C -50 °C
Bluetooth Type	BLE 4.2
Transmission Distance	≥60m

Main Function

- Adapter helps the Bluetooth-WIFI Hub to connect to a power source.
- Bluetooth-WIFI Hub helps multiple Bluetooth devices connect to WIFI.


Installations

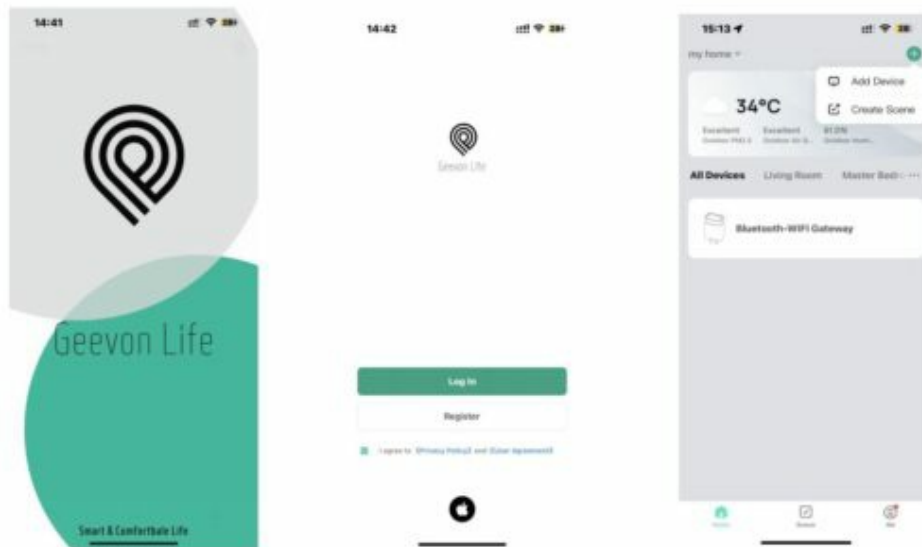
1. Download the Geevon Life App

Scan the QR code and download the free Andriod or IOS app, then install the APP.
Follow the prompts to register account or log in with an existing account.
If you have already installed the Geevon Life APP, go to step 2.



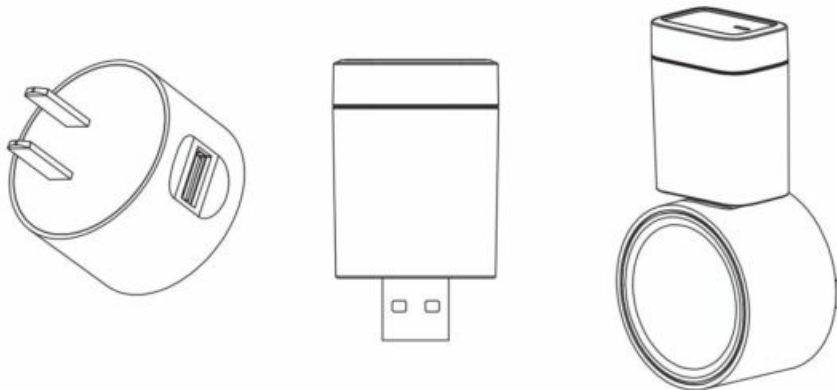
2. Add the Device

Launch App, tap “” button on the top right corner, or tap “Add Device” directly, the App will search for nearby device, tap “Add” when the devices are discovered. Then follow the instructions on the App page to complete pairing.



3. Add Bluetooth-Wifi Hub

(1) Power Your Bluetooth-Wifi Hub Plug the Geevon Wi-Fi hub(with adapter) into an indoor outlet. And wait 5 seconds for the device initialization to complete. LED color in Blue/Purple alternating every 1 -second means device is in pairing mode.



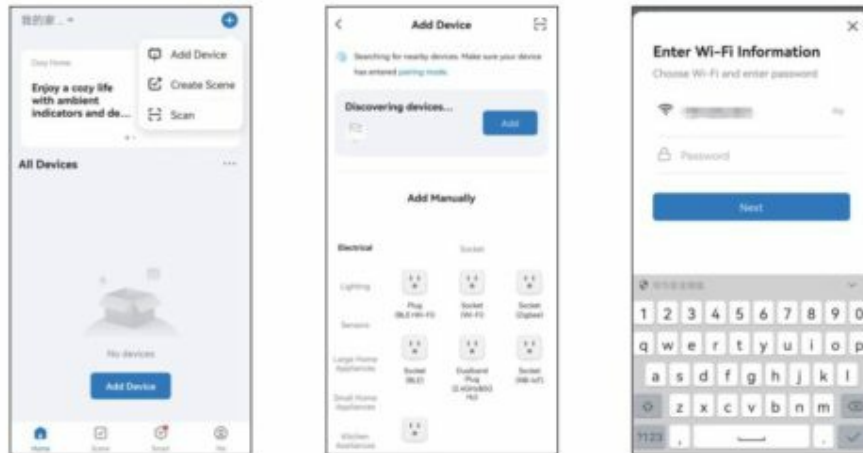
TIPS:

Choose an indoor location for your hub near the outside location of your Bluetooth devices and within range of Wi-Fi. Avoid areas where the signal must travel through more than one wall, or thick steel barriers.

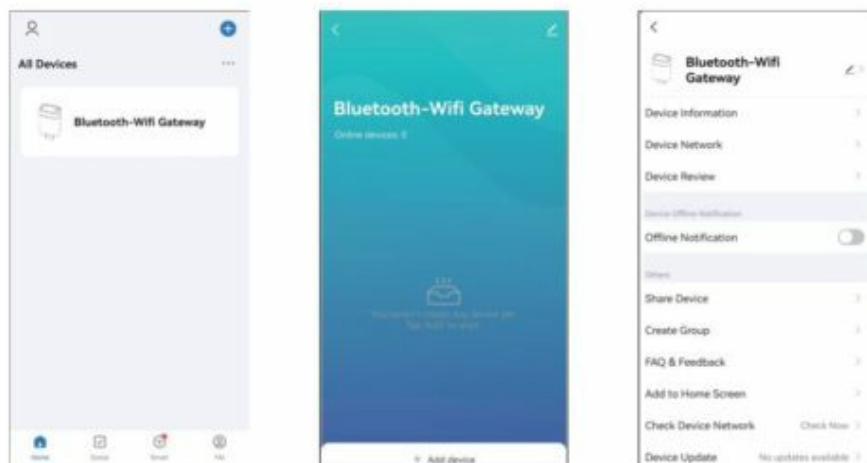
If you need to reconnect, press and hold the button for about 10 seconds until the indicator light goes out, and the Bluetooth-Wifi Hub will automatically enter pairing mode when the indicator light returns to blinking.

(2). Pair Your Hub

Step ①. Open Geevon Life App and tap “Add device ” to add WIFI Hub.

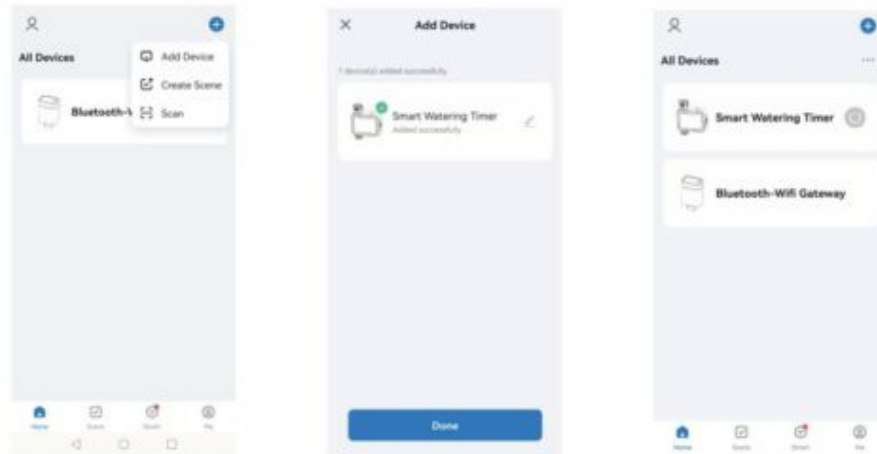


Step ②. Enter your Wi-Fi password and connect to the network(**Only 2.4 Ghz Wi-Fi is supported**). You are waiting for bonding to be 100%. Tap "Done" and the WIFI Hub icon will be on the device list. Tap "✎" edit the name you favorite.



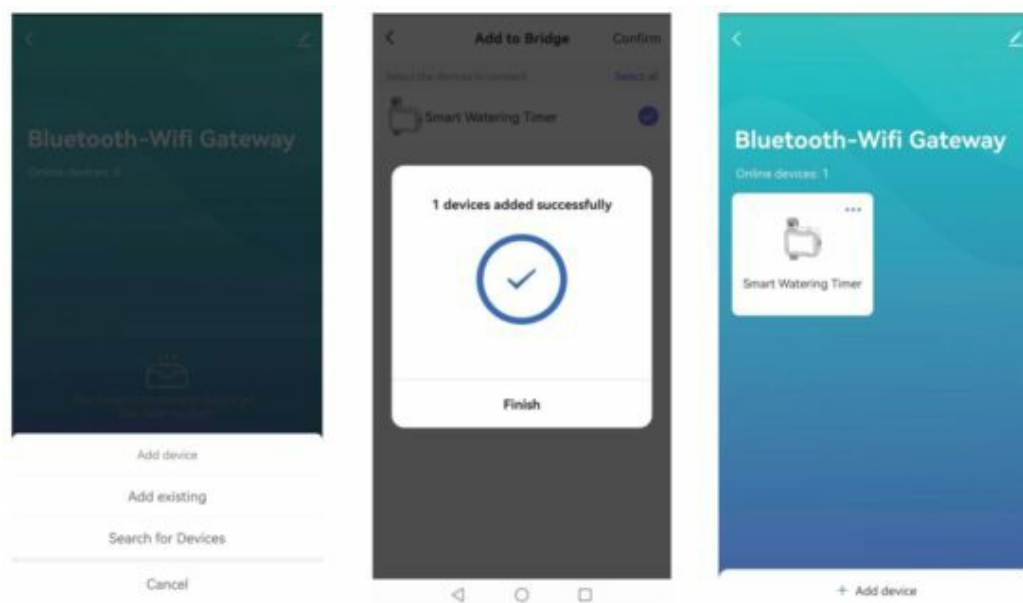
(3). Add your bluetooth devices

Step ①. Press the "Add Device " button on the top right corner and find your bluetooth device , tap "Done" button after connection finished.



Step ②. Once the connection is completed, the paired device will be listed on the home screen. Tap the " Bluetooth-Wi-Fi gateway " icon to enter the device details screen.

Step ③. Tap "Add existing " and select your bluetooth device , such as "Smart Watering Timer ," tap "Confirm". Confirm bluetooth device is added successfully and listed on the hub screen. Now you can program your bluetooth device.




4. Technical Support

support@geevon.com

If you need any help, please feel free to contact our customer service team.

Read More About This Manual & Download PDF:

Documents / Resources

	<p>GEEVON GWB-003 Bluetooth WiFi Hub and Adapter [pdf] User Manual GWB-003 Bluetooth WiFi Hub and Adapter, GWB-003, Bluetooth WiFi Hub and Adapter, WiFi Hub and Adapter, Hub and Adapter</p>
---	---

References

- [User Manual](#)

[Manuals+](#), [Privacy Policy](#)

This website is an independent publication and is neither affiliated with nor endorsed by any of the trademark owners. The "Bluetooth®" word mark and logos are registered trademarks owned by Bluetooth SIG, Inc. The "Wi-Fi®" word mark and logos are registered trademarks owned by the Wi-Fi Alliance. Any use of these marks on this website does not imply any affiliation with or endorsement.