



geemarc UGAMPLICALL100 Multi-Alert Receiver with Doorbell Instruction Manual

[Home](#) » [geemarc](#) » geemarc UGAMPLICALL100 Multi-Alert Receiver with Doorbell Instruction Manual 



AMPLICALL™100
Multi-Alert Receiver with doorbell



!!! Please refer to our website: www.geemarc.com for an up to date user guide, as there may be important updates and changes you need to be aware of !!!

Contents

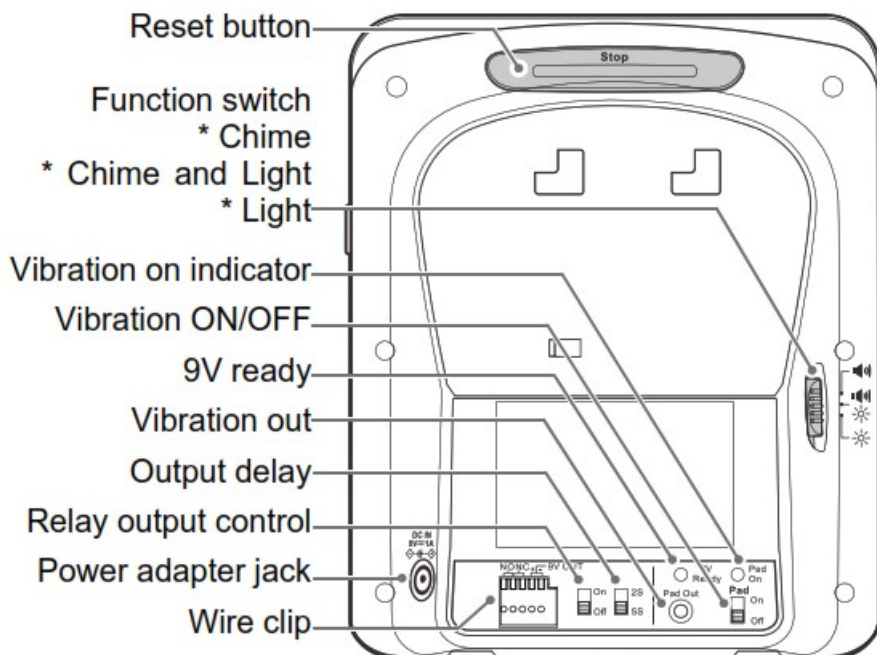
- 1 PACKAGE CONTENTS
- 2 DESCRIPTION
- 3 INSTALLATION
- 4 LOW BATTERY INDICATOR ON THE AC100
- 5 AMPLICALL™ 101
- 6 WALL MOUNTING
- 7 Pairing a new device AMPLICALL™ 101/110 or 140 with AMPLICALL™ 100
- 8 Deleting one device from the AMPLICALL™ 100 memory
- 9 Charging the melody/tone of the desired zone icon
- 10 Replacing the zone icon plate
- 11 Shake (Optional)
- 12 WIRING AND SETTING the door opening function
- 13 GUARANTEE
- 14 DECLARATIONS:
- 15 Documents / Resources
 - 15.1 References
- 16 Related Posts

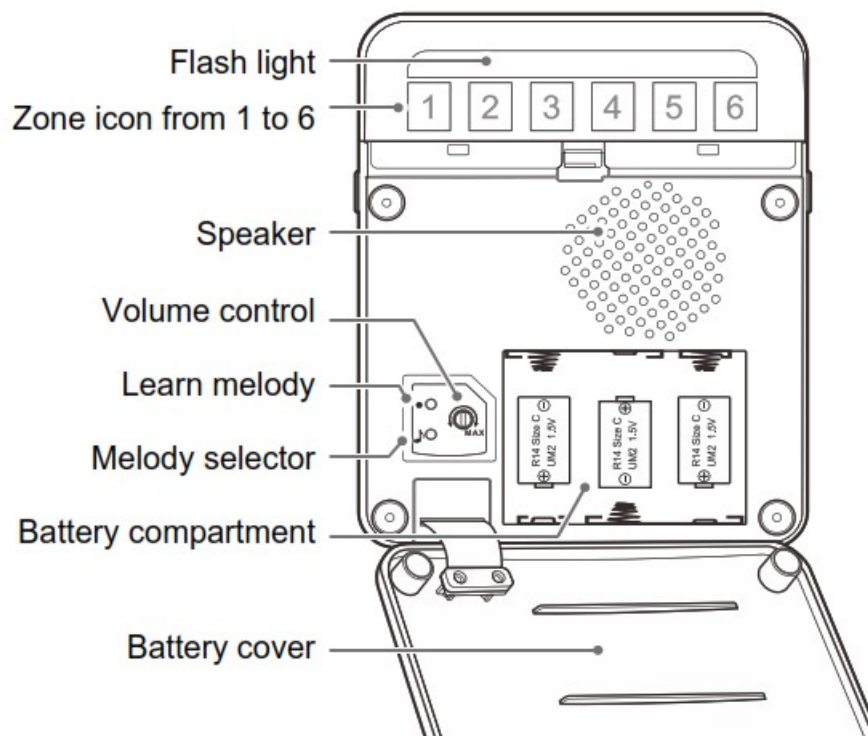
PACKAGE CONTENTS

The package contains the following items:

- 1 user's manual
- 1 AMPLICALL™100 (AC100) base
- 1 AMPLICALL™101 (AC101) remote
- 1 AC power adapter 5 screws and
- 5 fixing holes 1 wall bracket and
- 1 lanyard bracket.

DESCRIPTION

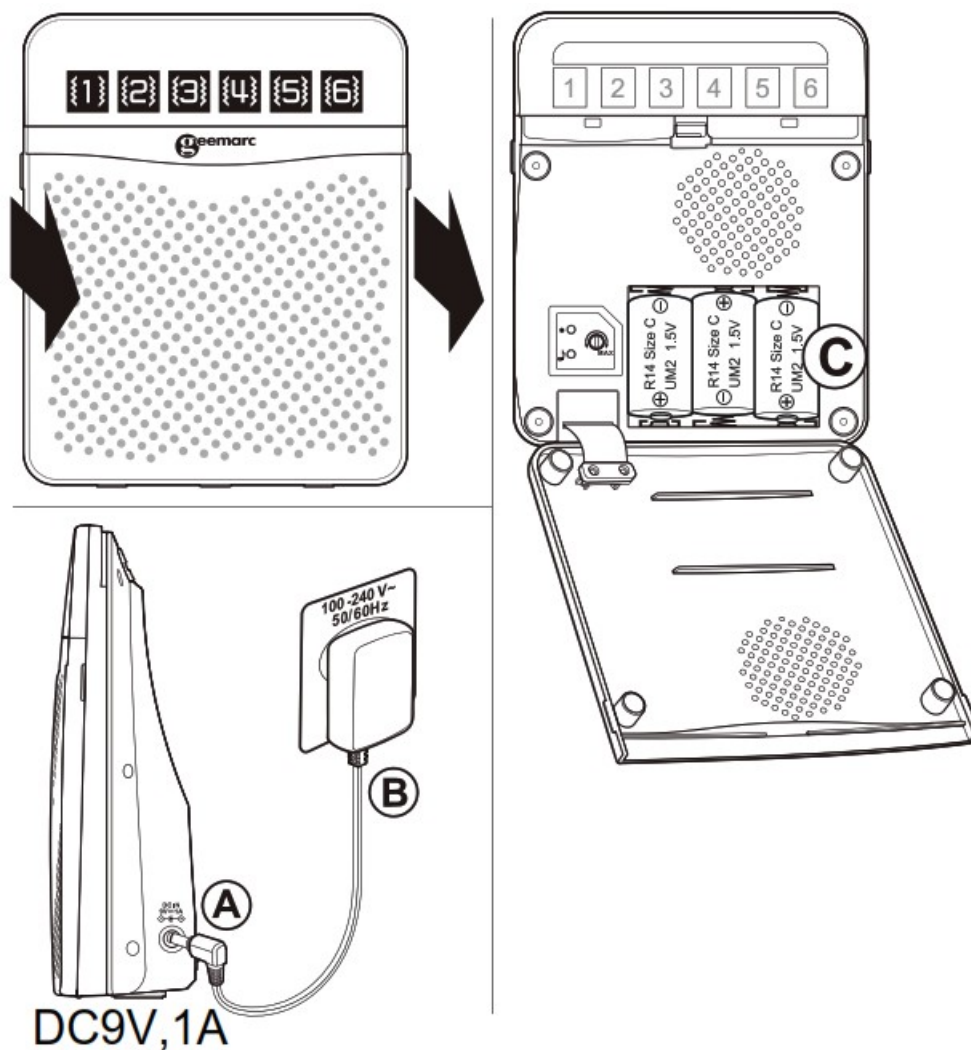




INSTALLATION

Battery installation in the base (needed in case of a power failure)

1. Open the battery cover by pulling it.
2. Insert three 1.5V LR14 alkaline batteries (not provided) (C) into the battery compartment, while ascertaining that the polarity is (+/-) .
3. Close the battery cover.
4. Plug the power cable into the power adapter jack found on the side of the AMPLICALL100 (A). Plug the adaptor into the mains on the wall (B). 9V ready indicator: This indicator will light up, when the 9V adaptor is connected correctly.



LOW BATTERY INDICATOR ON THE AC100

If a zone icon LED light is blinking, it indicates that the battery power is too low for the corresponding device (AC101, AC110 or AC140). You must replace the battery as soon as possible.

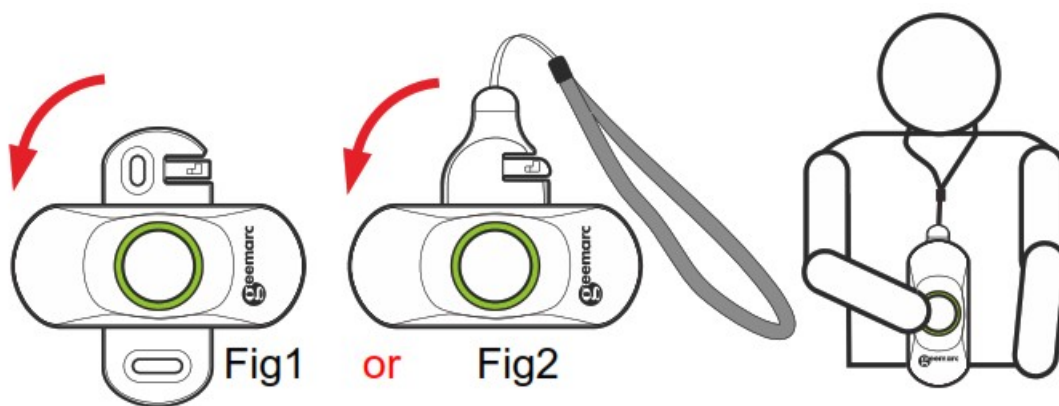
If your AMPLICALL100 flash light blinks every 15 seconds, this indicates that the AMPLICALL100 battery power is too low or that the batteries are not installed.

Please, disconnect the power and install new batteries.

AMPLICALL™ 101

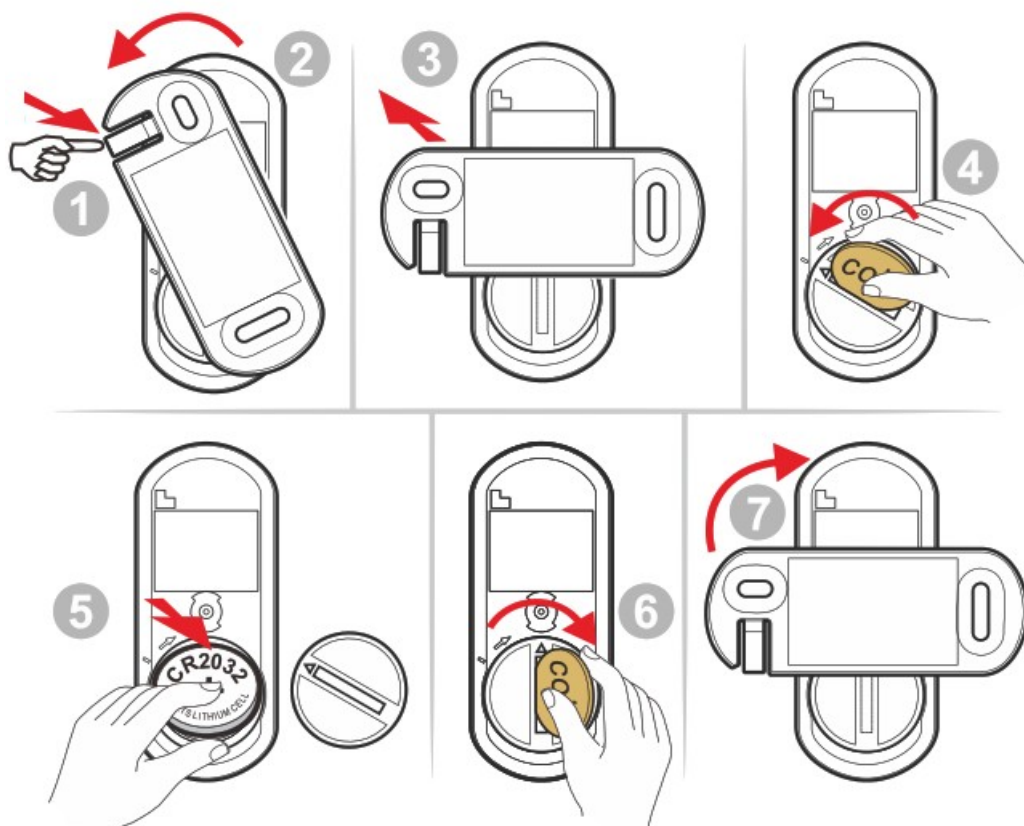
Put the bell press to the wall bracket or lanyard bracket

1. Place the mounting bracket that you have chosen (Fig 1 for the wall bracket or Fig 2 for the lanyard bracket) to 90 degrees.
2. Rotate the mounting bracket until the part locks.



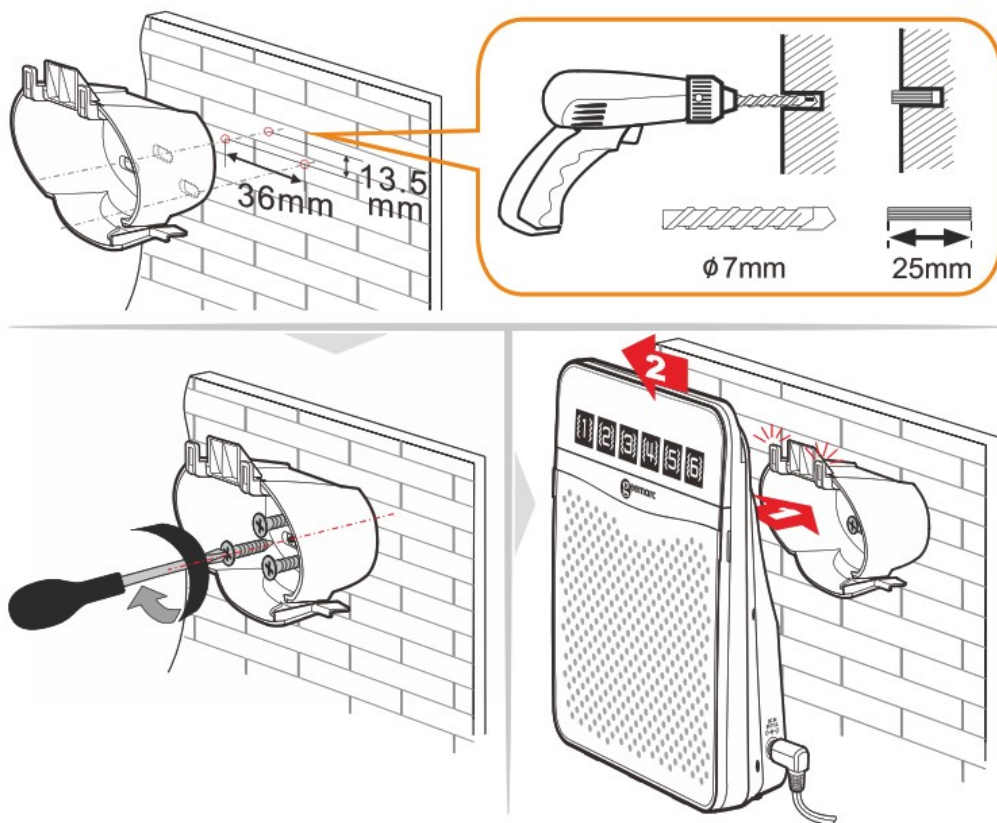
Battery installation in the remote

1. Use your finger to unlock the lock lever (fig 1).
2. Rotate the mounting bracket to 90 degrees (fig 2).
3. Remove the mounting bracket from the unit (fig 3).
4. Rotate the battery cover using a coin (fig 4).
5. Insert a CR2032 battery into the battery compartment with the polarity + on top. (fig 5).
6. Close the battery cover using a coin. (fig 6).
7. Replace the mounting bracket to 90 degrees. (fig 7).
8. Rotate the mounting bracket until the part locks.



WALL MOUNTING

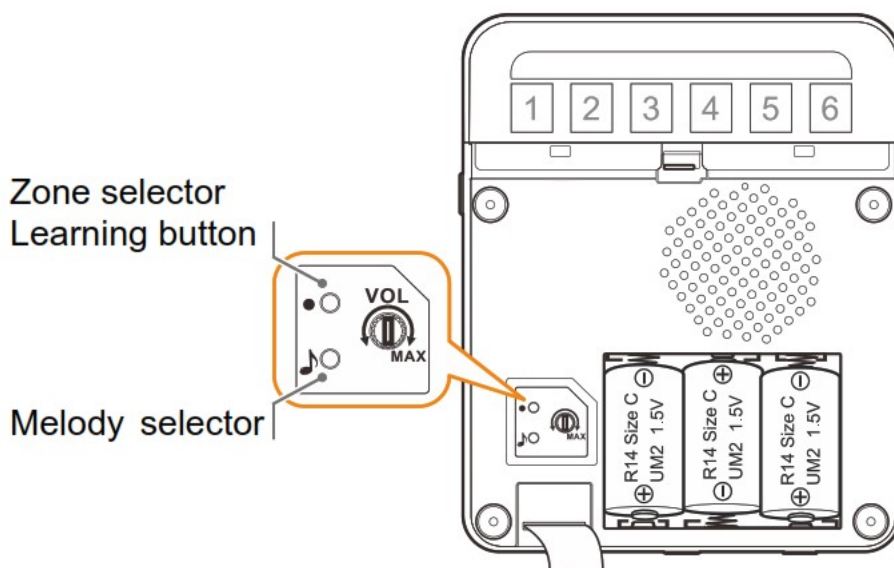
You can install your AMPLICALL TM100 onto a wall.
Please, follow the recommendations below.



1. Place the wall support against the wall and mark the three holes of the wall support on the wall.
2. Drill two holes horizontally, 36 mm apart, and drill the third hole between the 2 holes at 13.5 mm above the virtual line between the first two holes.
3. Insert three wall plugs fixing into the three holes.
4. Screw three screws into the plugs, hang the base on the support and slide it to the left to lock it.

Pairing a new device **AMPLICALL™ 101/110 or 140** with **AMPLICALL™ 100**

Note : When you receive your AMPLICALL™ 100 doorbell, the devices with the AMPLICALL™101 are paired already. So, you do not need to follow the following steps.




To pair a new device, please follow these steps:

Step 1: Enter pairing mode for the AC100 Press & hold the LEARNING button (●) for 3 seconds. The LED in zone

icon #1 will flash.

Step 2: Press the LEARNING button (●) again to move to the zone icon you wish to pair with.

Press the melody selector () button to scroll through the melodies. Once you hear a melody you like, do not press any button during the melody.

Step 3: Once the zone icon and melody are selected, press one time on device (AC101, AC110 or AC140) button to pair. If successful, the AC100 will generate two short tones. Press the LEARNING button (●) to exit the pairing mode; the system is now ready to use

To stop the Chime while the AMPLICALL™ 100 is alerting, press the reset button located at the top back.

Deleting one device from the AMPLICALL™100 memory

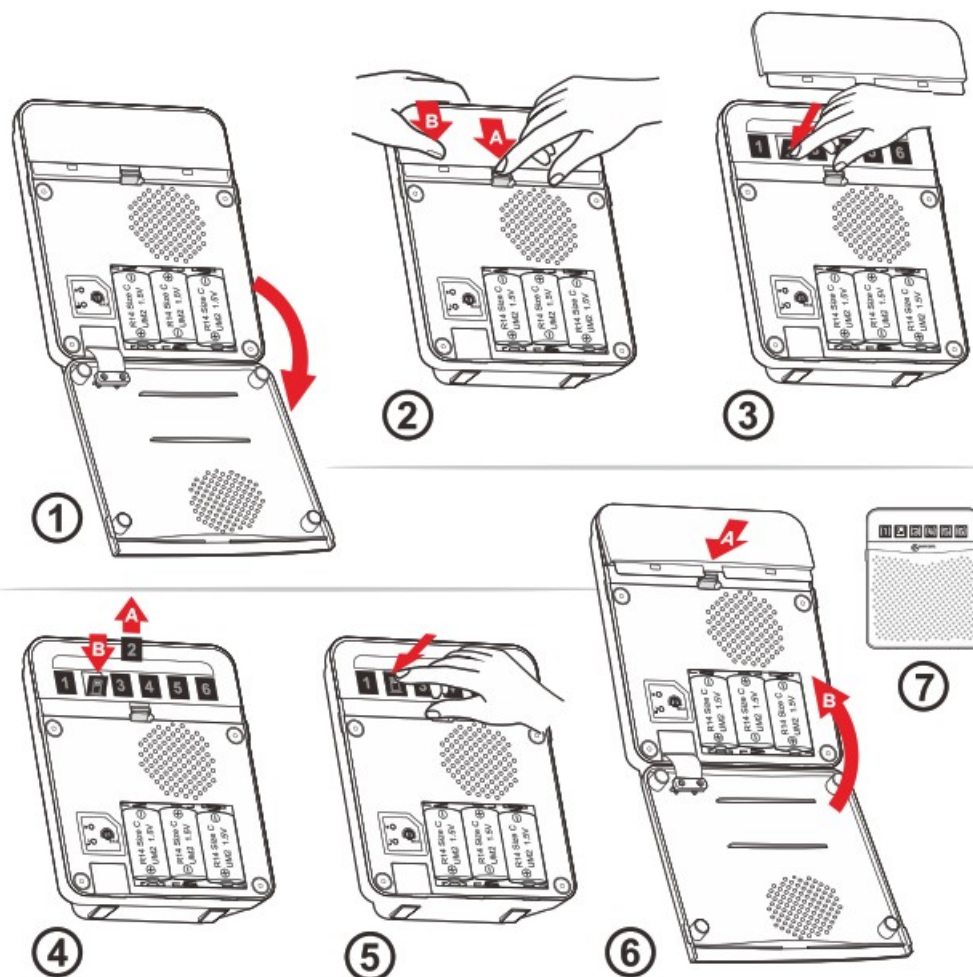
- First, press and hold the 'Learning' button for 3 seconds to enter pairing mode.
- Press the 'Learning' button to select the zone you want to delete.
- Press and hold both the ' Learning' and the ' Melody' buttons for 3 seconds.
- The AMPLICALL™100 will generate a tone to indicate the device for this zone has been deleted.
- Press the Reset button at the back to exit.

Charging the melody/tone of the desired zone icon

- First, press and hold the 'Learning' button for 3 seconds to enter pairing mode.
- Press the 'Learning' button to select the zone icon you want to change.
- Press the 'Melody' button to select the new melody/tone and then press learning button. You will hear a tone to indicate the modification was successful.
- Press the Reset button at the back to exit.


Replacing the zone icon plate

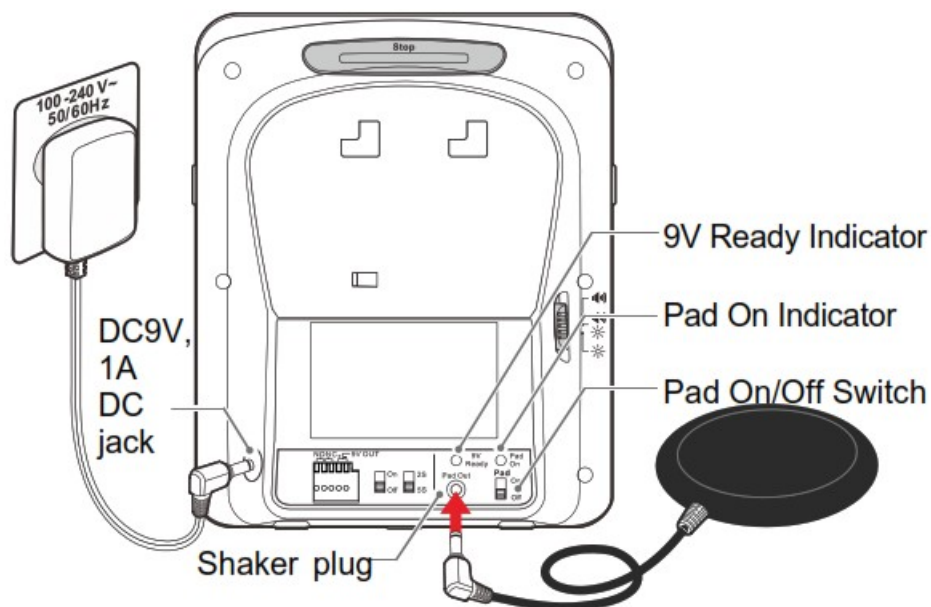
After pairing your device (AC101, AC110 or AC140), do not forget to change the zone icon image that is provided with the device (AC101, AC110 or AC140).



1. Open the battery cover (fig 1).
2. Slide down and lift up the transparent flasher cover (fig 2).
3. Push the bottom of the zone icon image to remove it (fig 3).
4. Put the new icon plate delivered with your device (AC101, AC110 or AC140) into the slot (fig 4).
5. Press the top of the icon plate to fix it (fig 5).
6. Install the transparent cover (first, insert the top and then clip the bottom of the transparent plastic; you should hear a beep) (fig 6).
7. Install the battery cover.

Shake (Optional)

Note: If you want to use the Shaker option, it is recommended to connect power adaptor (9V  1A, AC/DC) in addition to the batteries. This shaker will vibrate every time the base receives an alert.



Pad On/Off: Slide the PAD switch to turn ON or OFF the vibration function.

Pad On Indicator: If the Shaker On/Off switch is in the On position, the LED indicator will light up to indicate vibration function is activated.

Pad OUT: Plug the Shaker into this jack.

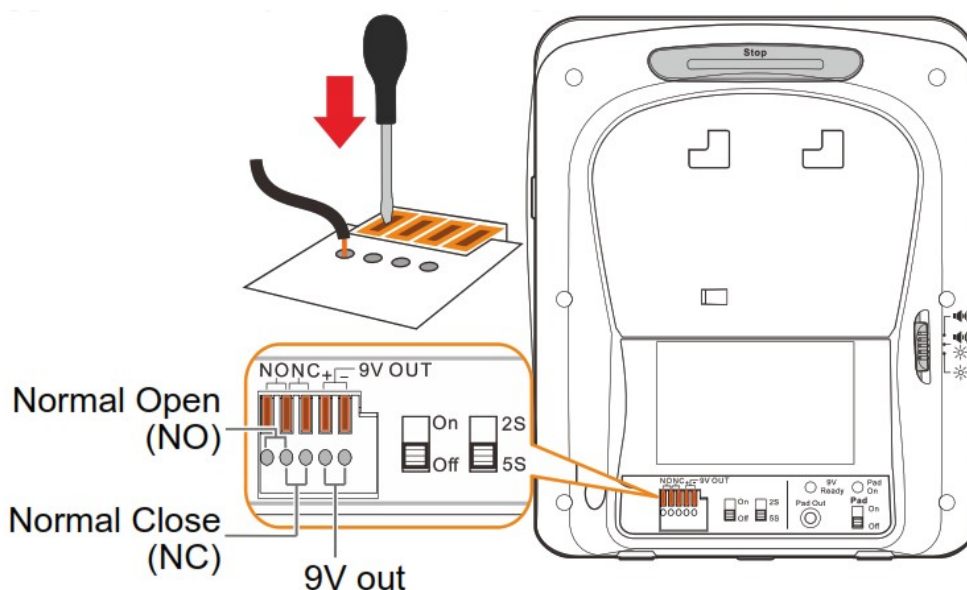
Note:

- The shaker can be used for all zone icons.
- The shaker can be bought separately (CLA2).

WIRING AND SETTING the door opening function

You have the possibility to command your door opening automatically, if the captor of zone icon 5 or 6 receives a trigger signal. Check the user guide of your gate trigger to connect your door opening device to the AMPLICALL™100.

Using a small screwdriver, press the lever and insert the wire inside the hole. Then release the lever to hold the wire.



Relay output control switch

Slide the switch on/off button to the 'On' position: the relay will activate when zone icon 5 or 6 receives a trigger signal.

Slide the switch to the 'Off' position: the relay will not activate when zone icon 5 or 6 receives a trigger signal.

Duration of the Relay output control

Slide the switch to the '2' position, the relay will activate 2 seconds when zone icon 5 or 6 receives a trigger signal.

Slide the switch to the '5' position, the relay will activate 5 seconds when zone icon 5 or 6 receives a trigger signal.

GUARANTEE

From the moment your Geemarc AMPLICALL™100 is purchased, Geemarc guarantee is for the period of two years. During this time, all repairs or replacements (at our discretion) are free of charge. Should you experience a problem then contact our help line or visit our website at www.geemarc.com. The guarantee does not cover accidents, negligence or breakages to any parts. The product must not be tampered with or taken apart by anyone who is not an authorized Geemarc representative. The Geemarc guarantee in no way limits your legal rights.

IMPORTANT: YOUR RECEIPT IS PART OF YOUR GUARANTEE AND MUST BE RETAINED AND PRODUCED IN THE EVENT OF A WARRANTY CLAIM.

Please note: The guarantee applies to the United Kingdom only.

DECLARATIONS:

UKCA Directives

Geemarc Telecom SA hereby declares that this AMPLICALL100 is in compliance with the essential requirements and other relevant provisions of the Radio Equipment Directive 2014/53/UE.

The UKCA declaration of conformity may be consulted at www.geemarc.com

RF power : < 250mW

Recycling Directives

The WEEE (Waste Electrical and Electronic Equipment) has been put in place for the products at the end of their useful life are recycled in the best way.

When this product is finished with, please do not put it in your domestic waste bin. Please use one of the following disposal options:

- Remove the batteries and deposit them in an appropriate WEEE skip. Deposit the product in an appropriate WEEE skip.
- Or, hand the old product to the retailer. If you purchase a new one, they should accept it.

Thus if you respect these instructions you ensure human health and environmental protection.



For product support and help visit our website at www.geemarc.com

E-mail : help@geemarc.com Telephone : **01707 387602**

lines are open 09h00 to 16h00 Mon to Fri

2 Rue Galilée, Parc de l'Etoile, 59791 Grande-Synthe, Cedex France.

This product is made in China To Geemarc Telecom

Documents / Resources



[geemarc UGAMPLICALL100 Multi-Alert Receiver with Doorbell](#) [pdf] Instruction Manual
UGAMPLICALL100 Multi-Alert Receiver with Doorbell, UGAMPLICALL100, Multi-Alert Receiver
with Doorbell, Doorbell

References

- [G Home - Geemarc UK](#)
- [G STARTSEITE - Geemarc Germany](#)

Manuals+