



geemarc AMPLICALL 140 Wireless Sound Sensor Alerter User Manual

[Home](#) » [geemarc](#) » geemarc AMPLICALL 140 Wireless Sound Sensor Alerter User Manual 

geemarc AMPLICALL 140 Wireless Sound Sensor Alerter



Please refer to our website: www.geemarc.com for an up to date user guide, as there may be important updates and changes you need to be aware of.

Contents

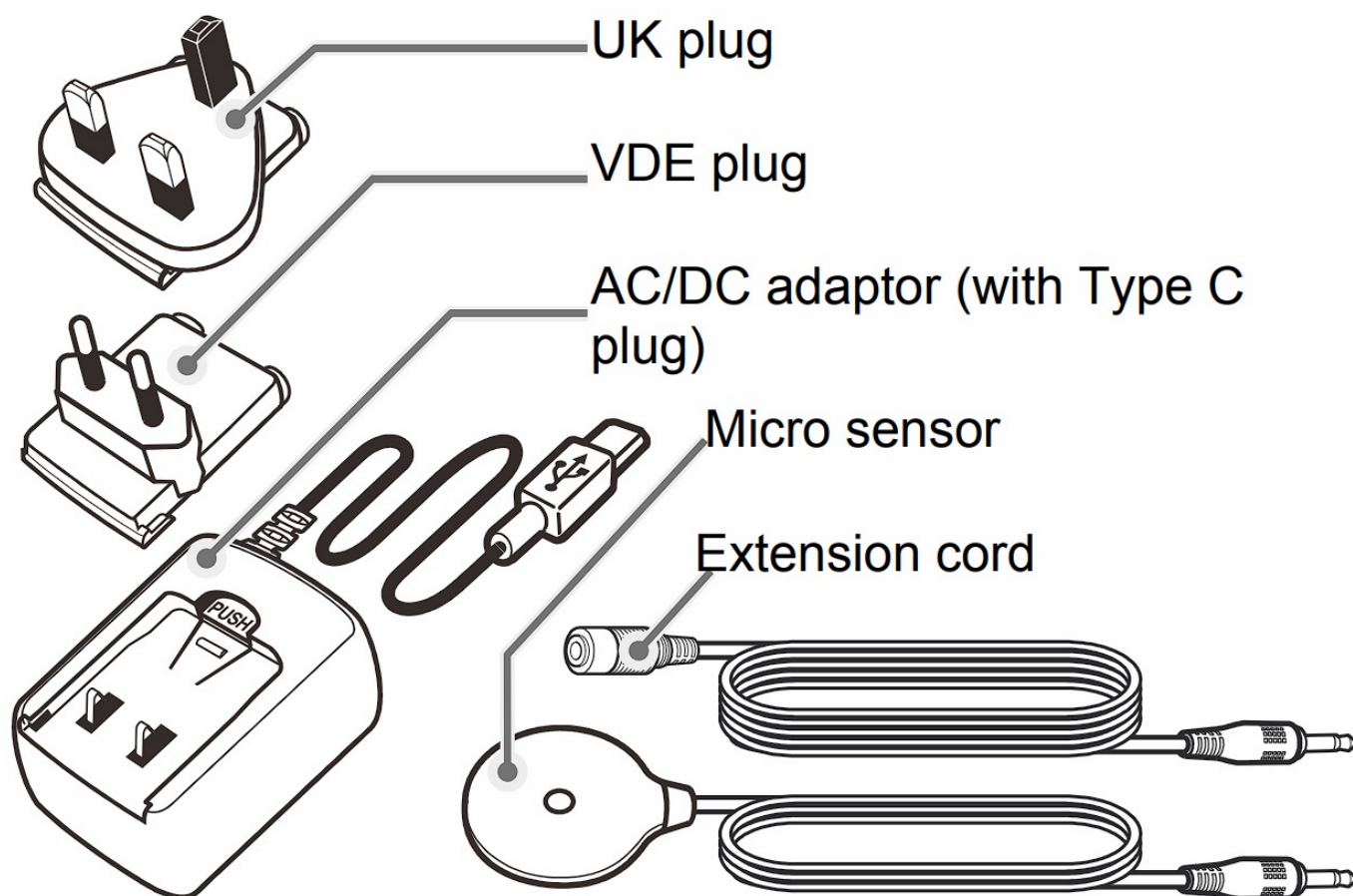
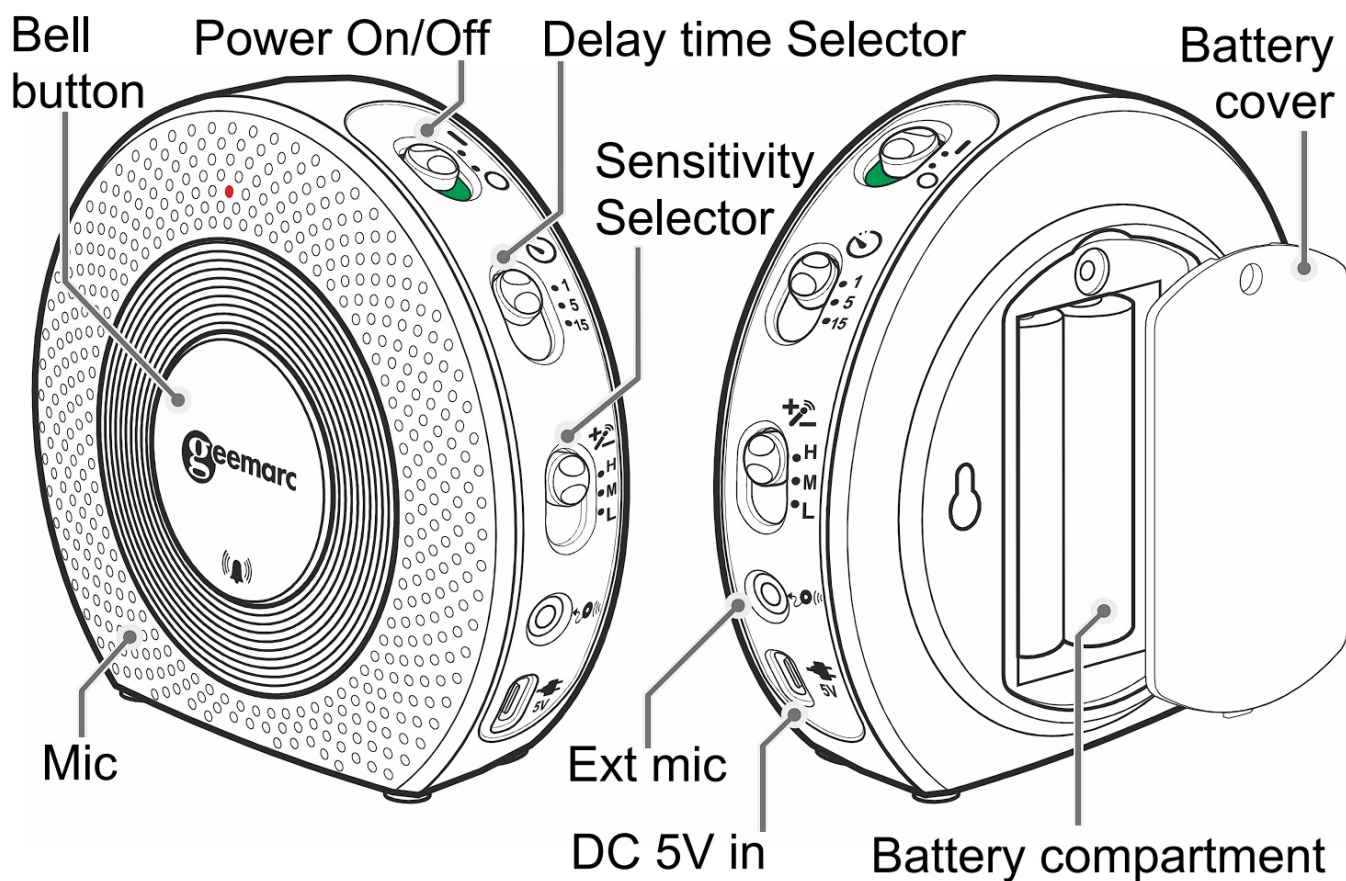
- [1 Package Contents](#)
- [2 DESCRIPTION](#)
- [3 Connection your device](#)
- [4 Pairing with the AMPLICALL receivers](#)
- [5 Settings](#)
- [6 Operation](#)
- [7 Code Conflict](#)
- [8 Wall mounting](#)
- [9 GUARANTEE](#)
- [10 DECLARATIONS](#)
 - [10.1 Recycling Directives](#)
- [11 Documents / Resources](#)
 - [11.1 References](#)
- [12 Related Posts](#)

Package Contents

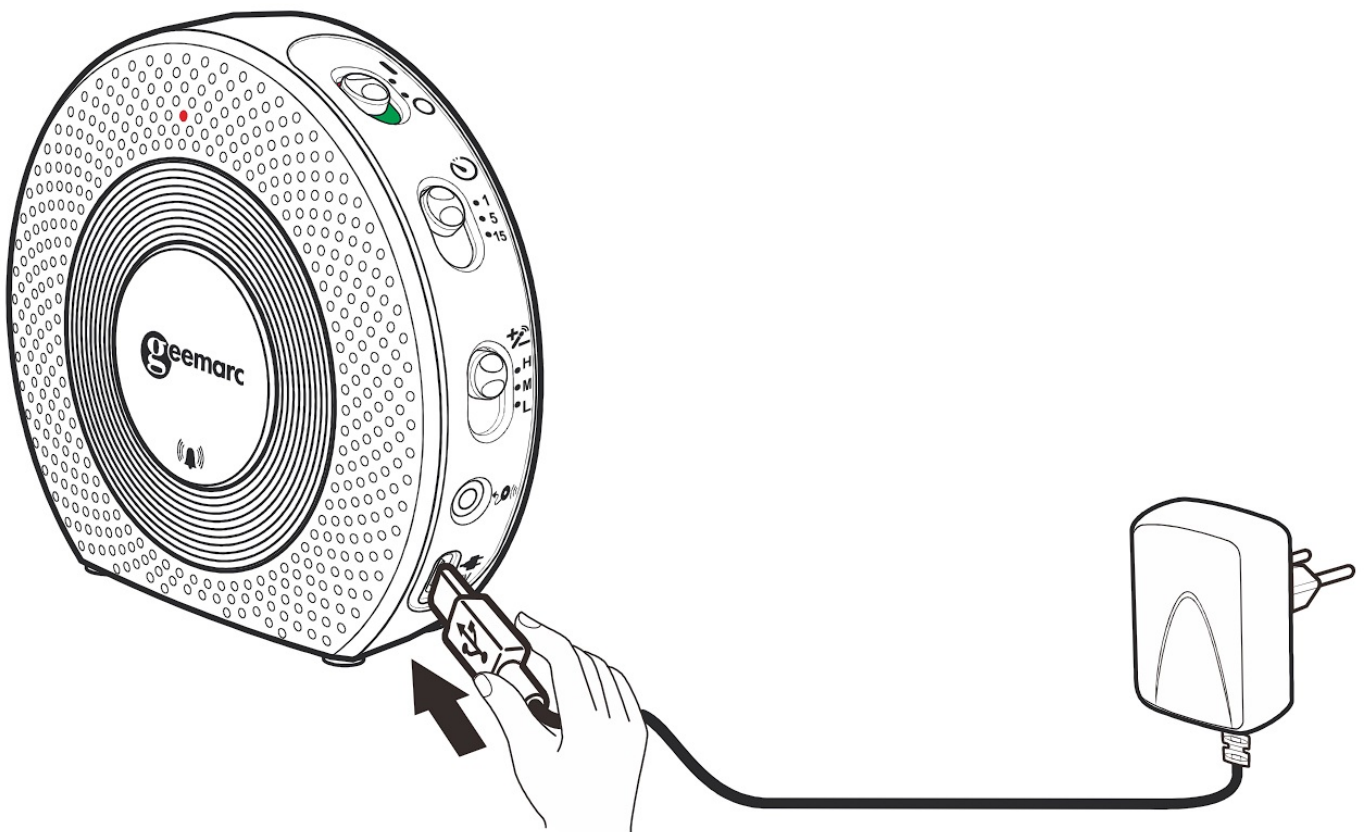
The AC140(AMPLICALLTM140) box contains the following items:

- 1 AC140 Base station
- 1 AC/DC power adaptor
- 1 UK and 1 VDE plug adaptors
- 1 Micro sensor (50cm)
- 1 double side adhesive sticker for Micro sensor mounting
- 1 external cord with 3.5mm plug / jack for micro sensor (1.5m)
- 1 user's manual
- 2 screws and 2 anchors
- 1 Drill hole template
- 2pcs of doorbell icons and 2pcs of baby icons

DESCRIPTION



Connection your device

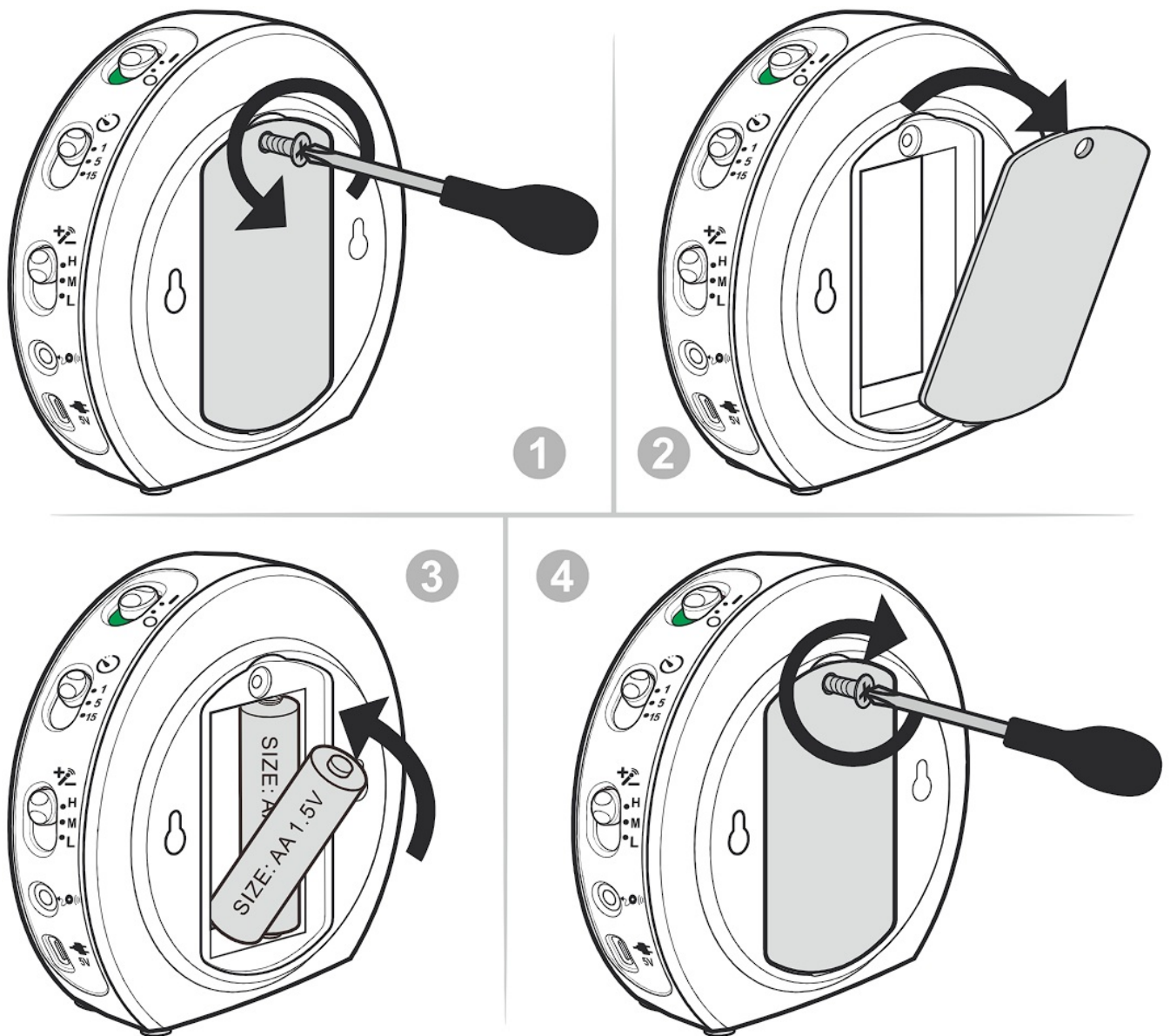


Your AC140 is delivery with an power adaptor, you must plug it in the socket AC/DC situate on the bottom right.

**When using the AC/DC power, you must install the batteries too.
Otherwise you will get a battery low information on AC140.**

You have the possibility to add 2 Alkaline batteries AA 1.5V (not provided) if you want that your device works in power failure mode or without power adaptor.

Please follow the below procedure to insert the batteries.



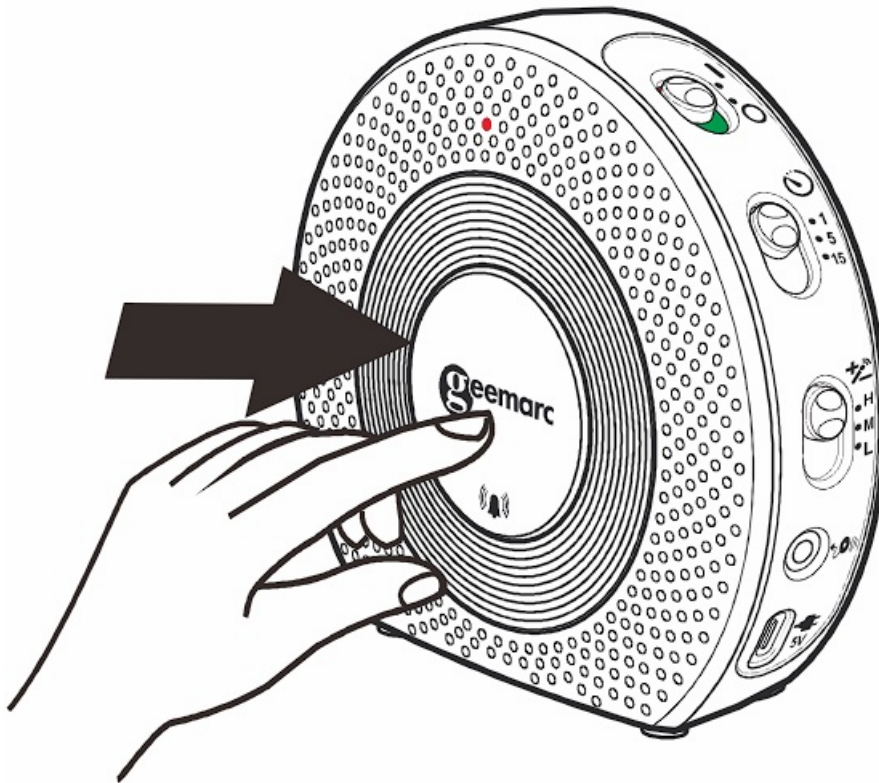
1. Unscrew the screw on the battery cover.
2. Open the battery cover.
3. Insert the 2 alkaline batteries AA1.5V in respecting the polarity.
4. Replace the battery cover.
5. Replace the screw.

Pairing with the AMPLICALL receivers

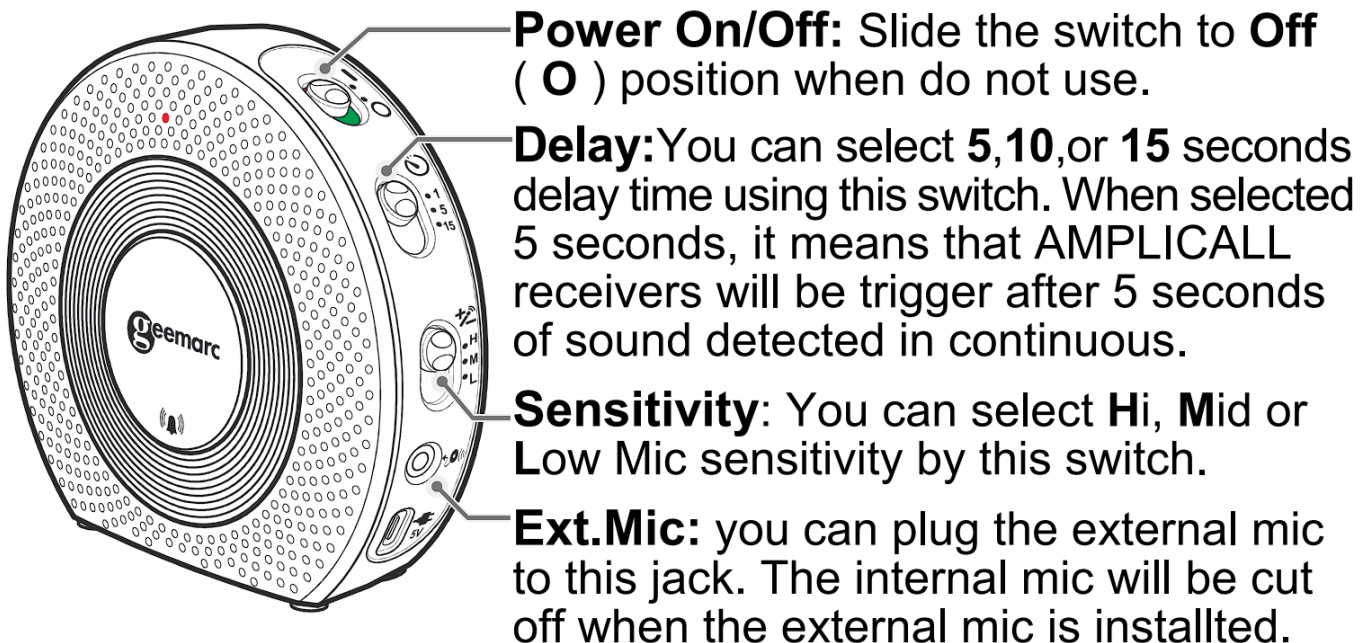
AC140 works with the AMPLICALL receivers and must be paired before using.
 To pair a new device, please follow these steps:

1. Enter pairing mode for the AMPLICALL receivers.
 Press & hold the **LEARNING** button (●) for 3 seconds. The LED in zone icon #1 will flash.
2. Press the **LEARNING** button (●) again to move to the zone icon you wish to pair with.
 Press the **melody selection** (🎵) button to scroll through the melodies. Once you hear a melody you like, do not press any button during the melody.
3. Once the zone icon and melody are selected, press one time on device
 AC140 button to pair. If successful, the AMPLICALL receivers will generate two short tones.

Press the **LEARNING** button (●) to exit
the pairing mode; the system is now ready to use

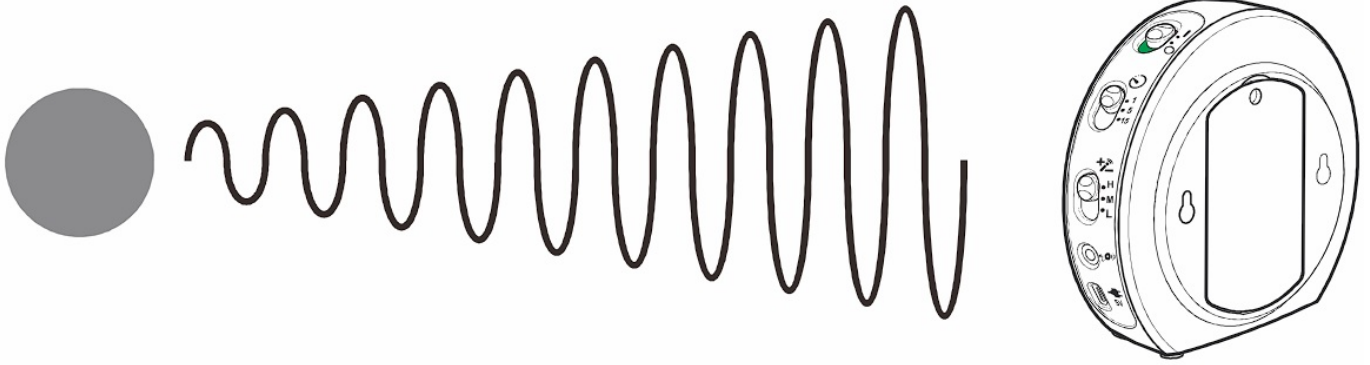


Settings

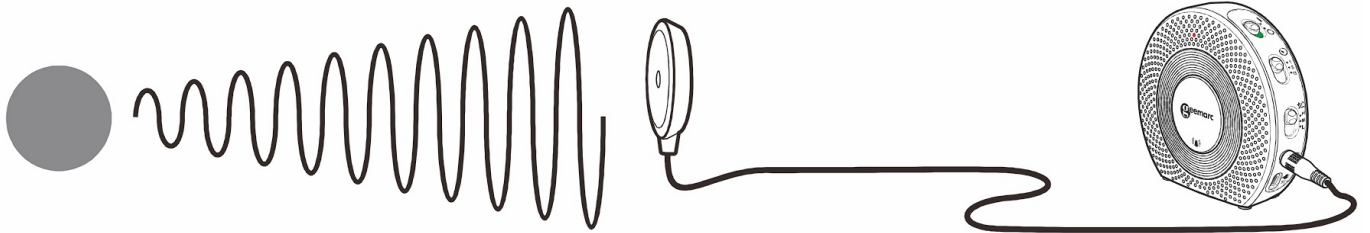


Operation

Using the **internal** microphone:



Using the external microphone:



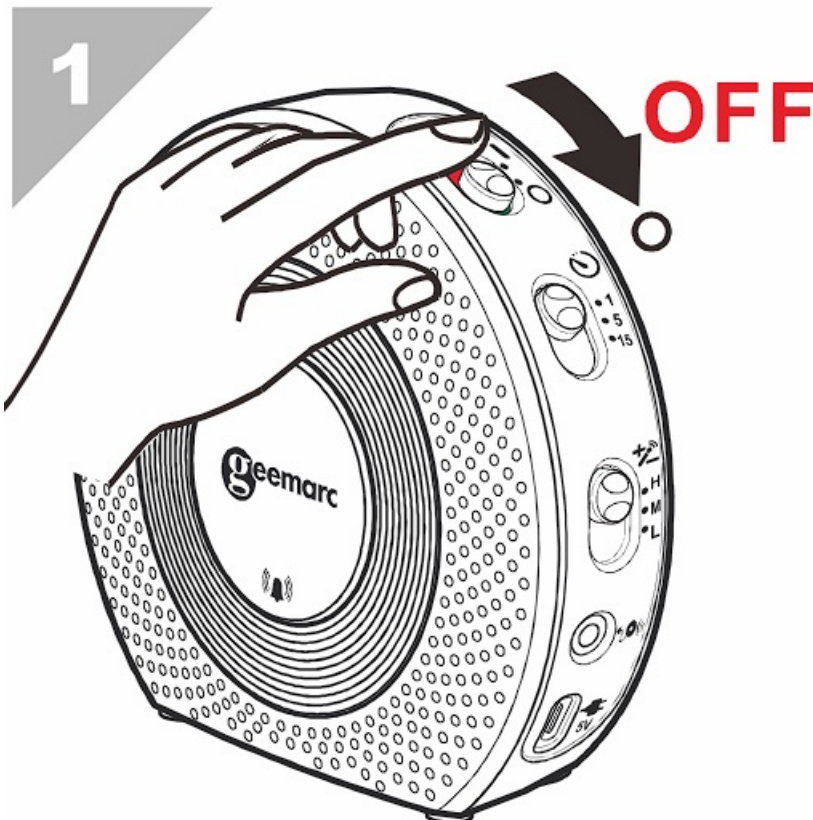
Adjust the distance (between the microphone and the Sound source) and sensitivity according to the sound source type and intensity.

Code Conflict

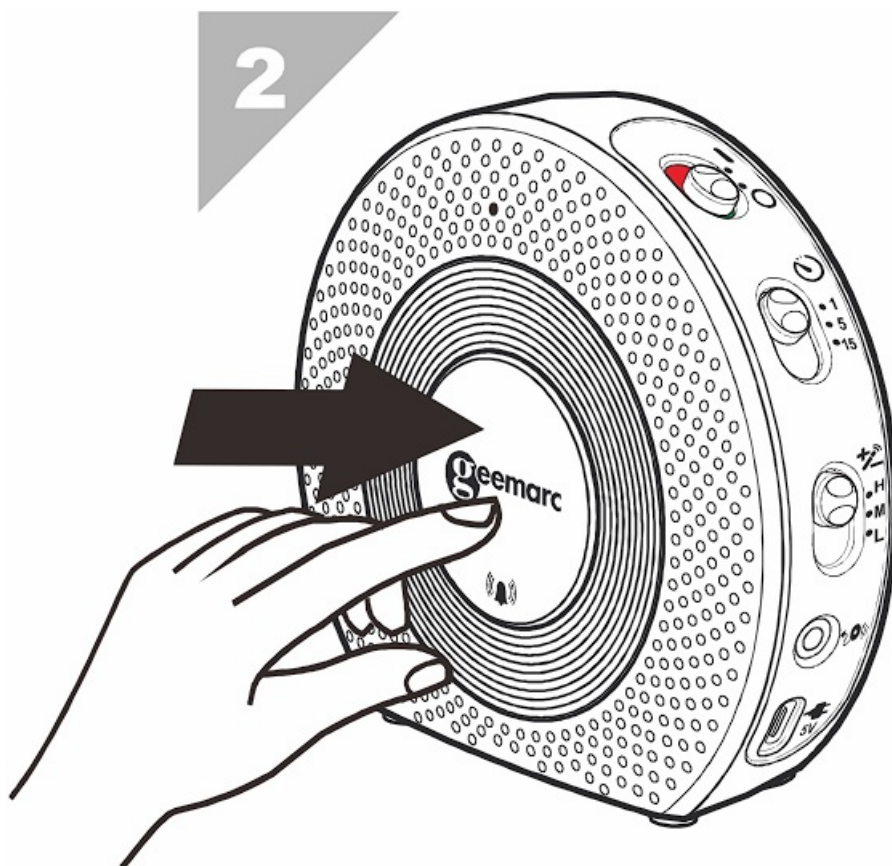
If the AC140 coding is the same as another transmitter, you must change the code. Please follow the procedure as below.

When you have changed the code must re-pair the bell press.

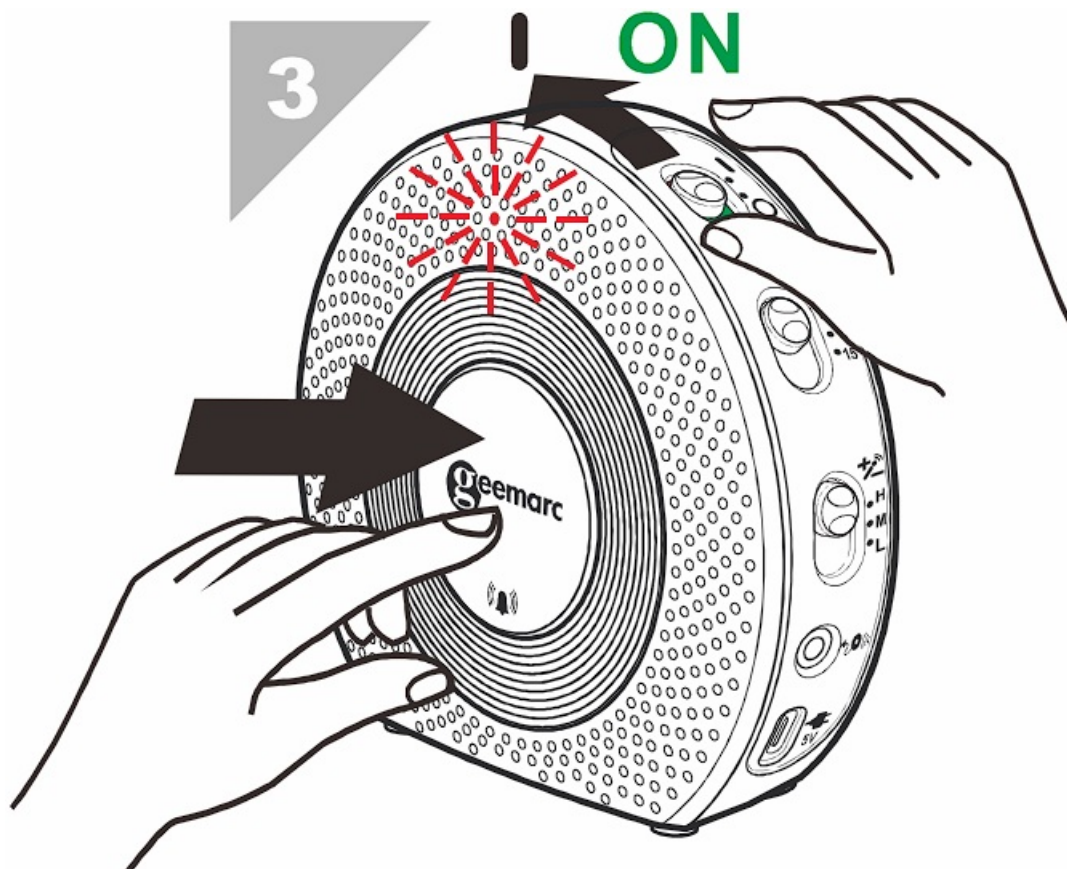
1. Slide the power switch to **OFF** position.



2. Press and hold the bell button.

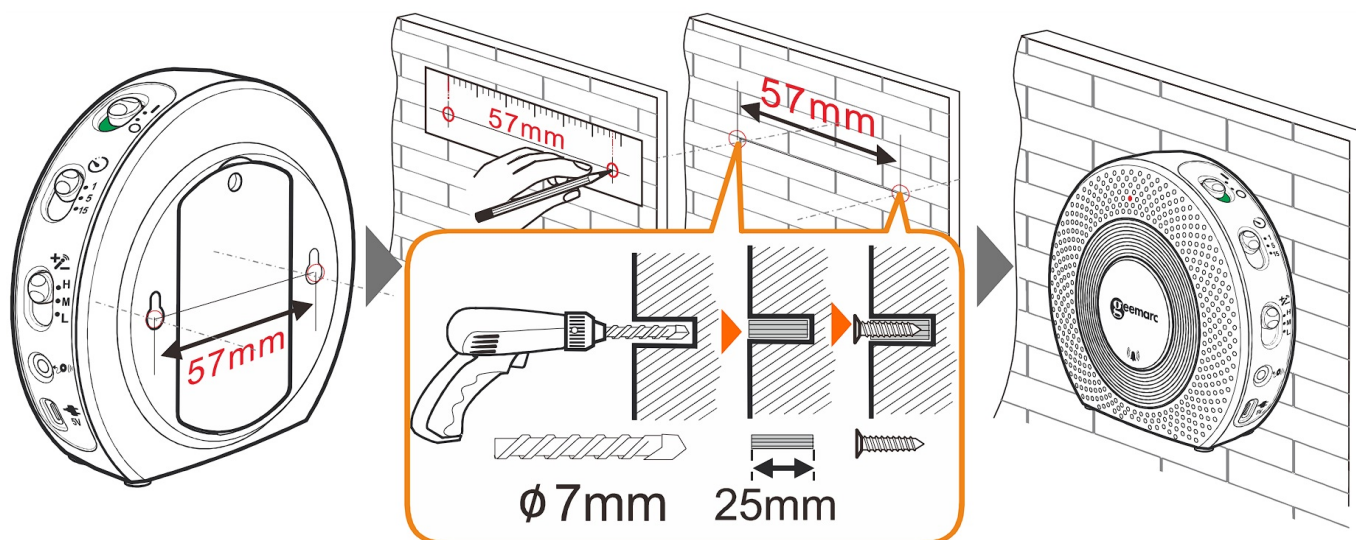


3. Slide the power switch to **ON** position, do not release the bell button, until the LED indicator blinks 6 times.



Wall mounting

The AC140 can either be placed on a flat surface or be mounted on a wall.



Mark two holes on the wall using a pencil and drill hole template.
Mount the unit to the wall using the provided anchors and screws.

GUARANTEE

From the moment your Geemarc AMPLICALLTM140 is purchased, Geemarc guarantee is for the period of two years. During this time, all repairs or replacements (at our discretion) are free of charge. Should you experience a problem then contact our help line or visit our website at www.geemarc.com. The guarantee does not cover accidents, negligence or breakages to any parts.

The product must not be tampered with or taken apart by anyone who is not an authorized Geemarc representative. The Geemarc guarantee in no way limits your legal rights.

IMPORTANT: YOUR RECEIPT IS PART OF YOUR GUARANTEE AND MUST BE RETAINED AND PRODUCED IN THE EVENT OF A WARRANTY CLAIM.

Please note: The guarantee applies to the United Kingdom only

DECLARATIONS

UKCA Directives

Geemarc Telecom SA hereby declares that this AMPLICALLTM140 is in compliance with the essential requirements and other relevant provisions of the Radio Equipment Directive 2014/53/UE.

The UKCA declaration of conformity may be consulted at www.geemarc.com

RF power: < 250mW

Recycling Directives

The WEEE (Waste Electrical and Electronic Equipment) has been put in place for the products at the end of their useful life are recycled in the best way.

When this product is finished with, please do not put it in your domestic waste bin. Please use one of the following disposal options:

- Remove the batteries and deposit them in an appropriate WEEE skip. Deposit the product in an appropriate WEEE skip.
- Or, hand the old product to the retailer. If you purchase a new one, they should accept it. Thus if you respect these instructions you ensure human health and environmental protection.

For product support and help visit our website at www.geemarc.com

E-mail : help@geemarc.com

telephone **01707 387602**
lines are open 09h00 to 16h00 Mon to Fri
2 Rue Galilée, Parc de l'Etoile, 59791 GRANDE-SYNTHE Cedex,
FRANCE
This product is made in China To Geemarc Telecom



Documents / Resources



[geemarc AMPLICALL 140 Wireless Sound Sensor Alerter](#) [pdf] User Manual
AMPLICALL 140 Wireless Sound Sensor Alerter, Sound Sensor Alerter, Wireless Sound Sensor Alerter, AMPLICALL 140, Sound Alerter, Wirelss Alerter, Baby Monitor

References

- [🌐 Home - Geemarc UK](#)
- [🌐 STARTSEITE - Geemarc Germany](#)

Manuals+.