



## GeekTale K11 Smart Lock User Manual

[Home](#) » [GeekTale](#) » GeekTale K11 Smart Lock User Manual 

### Contents

- 1 [GeekTale K11 Smart Lock](#)
- 2 [PRODUCT DIMENSIONS](#)
- 3 [Indicator Light](#)
- 4 [INCLUDED IN THE BOX](#)
- 5 [ASSEMBLY DIAGRAM](#)
- 6 [CHECK THE DOOR'S DIMENSIONS](#)
- 7 [INSTALLING LATCH AND STRIKE PLATE](#)
- 8 [INSTALLING EXTERIOR KNOB](#)
- 9 [HOW TO UPGRADE](#)
- 10 [HOW TO ADD FINGERPRINT BY GEEKSMART APP](#)
- 11 [SPECIFICATIONS](#)
- 12 [FCC WARNING](#)
- 13 [FAQ](#)
- 14 [Documents / Resources](#)
  - 14.1 [References](#)





## Specifications

- **Model No.:** K11
- **Product Dimensions:**
  - **Exterior Knob:** 2.67 inch (68 mm) x 2.95 inch (75 mm)
  - **Interior Knob:** 2.95 inch (75 mm) x 2.95 inch (75 mm)
  - **Single Latch:** 2.16 inch (55 mm) x 1.65 inch (42 mm)
  - **Backset:** 2 3/8 inch (60 mm) or 2 3/4 inch (70 mm)

## Product Description

The K11 smart lock by GeekTale features a Type-C Power port, Mechanical key hole, Exterior knob, Indicator, Fingerprint reader, Interior knob, Thumb turn, and Indicator Light.

### Indicator Lights:

1. **Add fingerprint:** Blue light indicates readiness to add a fingerprint.
2. **Fingerprint & Mobile Phone Unlock:**
  - Green light: Success (buzzer beeps once, fingerprint light flashes green).
  - Red light: Failed (buzzer beeps twice, fingerprint light flashes red).
3. **Low Power:** Green+red light indicates low power when unlocked with fingerprint or mobile app.

### Installing Exterior Knob

1. Install the Exterior Knob by inserting the spindle and standoffs into the corresponding holes of the single latch.
2. **Note:** Do not close the door until the lock is fully installed.
3. Position the Exterior Knob vertically with the keyhole and Type-C charge port facing downward.

## Installing Latch and Strike Plate

1. Install the latch into the door ensuring it faces the opposite direction of the door's closing direction.
2. Install the strike into the door frame ensuring smooth entry of the latch.

**IMPORTANT:** Read the instructions carefully before operating the appliance and keep them for future reference.

## WELCOME

Geek Tale bids you welcome to a world of smart home devices, smart locks, and smart surveillance. We at Geek Tale strive to explore and develop the smart home industry for the good of all. We use cutting-edge technologies to develop products fit and ready for the market.

Please visit our website [www.geektechnology.com](http://www.geektechnology.com)

Before installing, please scan the QR codes to watch our easy step-by- step installation video.

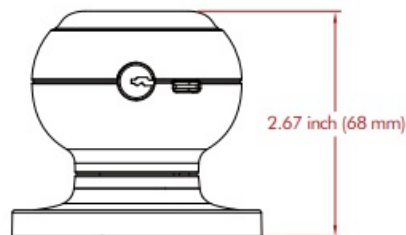
If you have questions regarding the installation process, please contact us by mail [service\\_lock@geektechnology.com](mailto:service_lock@geektechnology.com) or by phone 1-[844-801-8880](tel:844-801-8880).



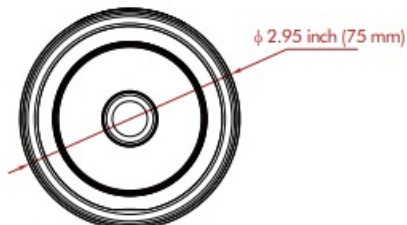
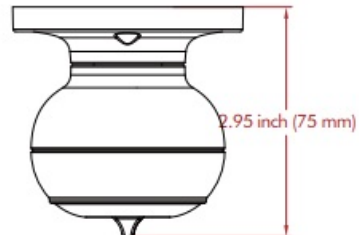
Scan the QR code for more  
Geek Tale Products

## PRODUCT DIMENSIONS

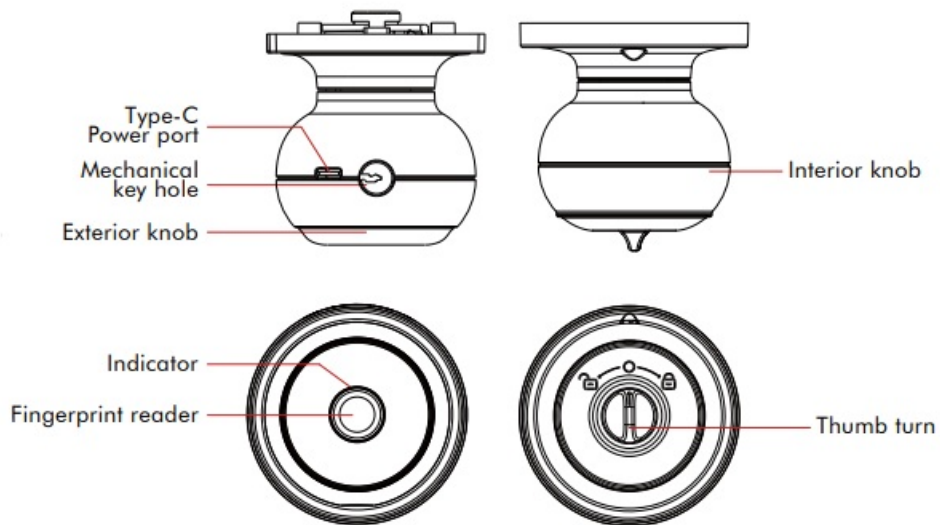
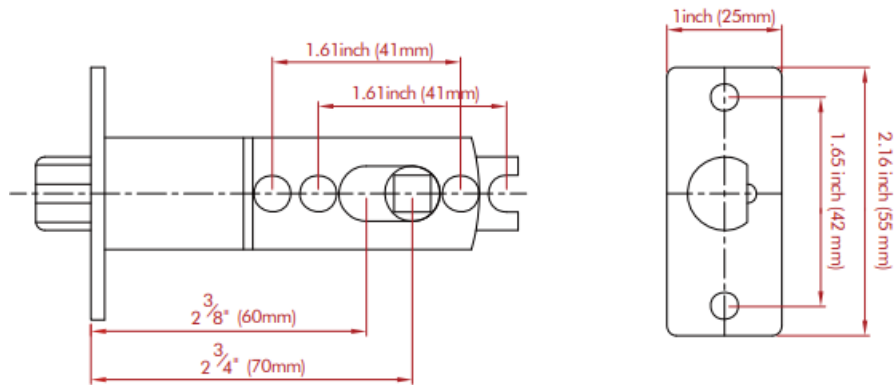
Exterior Knob



Interior Knob



## Single Latch



## Indicator Light

### 1. Add fingerprint

Blue light: The fingerprint light turns to blue as to indicate the lock is ready to add fingerprint.

### 2. Fingerprint, mobile phone APP unlock

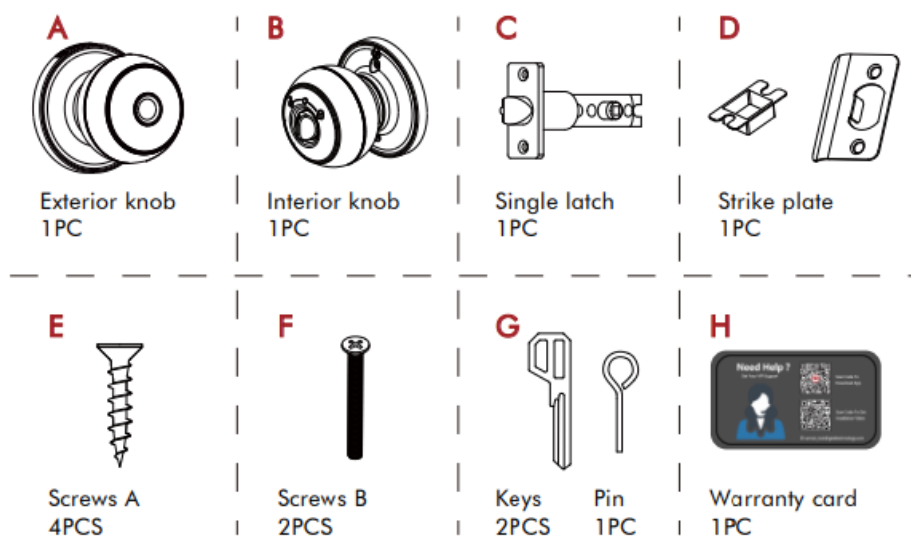
Green light: Success (the buzzer beeps once, and the fingerprint light flashes green to indicate).

Red light: Failed (the buzzer beeps twice the fingerprint light flashes red to indicate).

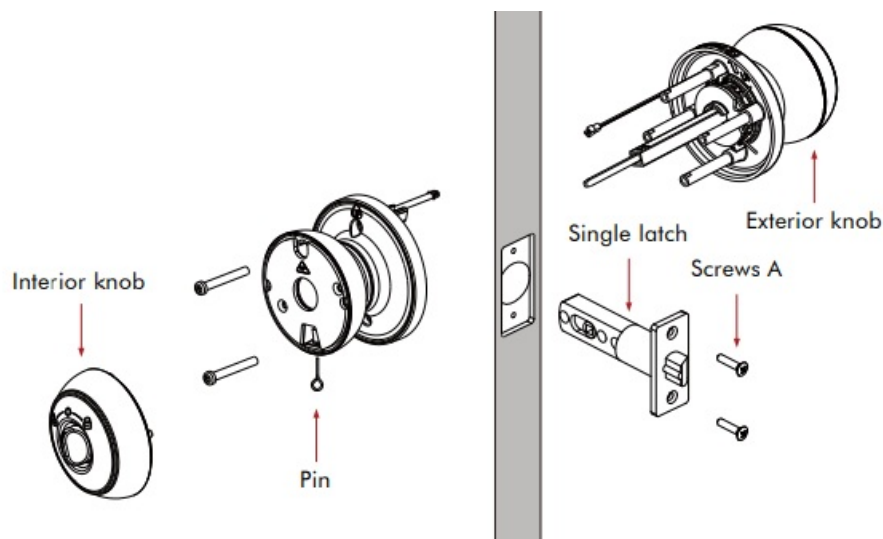
### 3. Low power

Green+red light: When the lock is unlocked with fingerprint or mobile APP the buzzer beeps once and fingerprint light flash green and red.

## INCLUDED IN THE BOX



## ASSEMBLY DIAGRAM



## CHECK THE DOOR'S DIMENSIONS

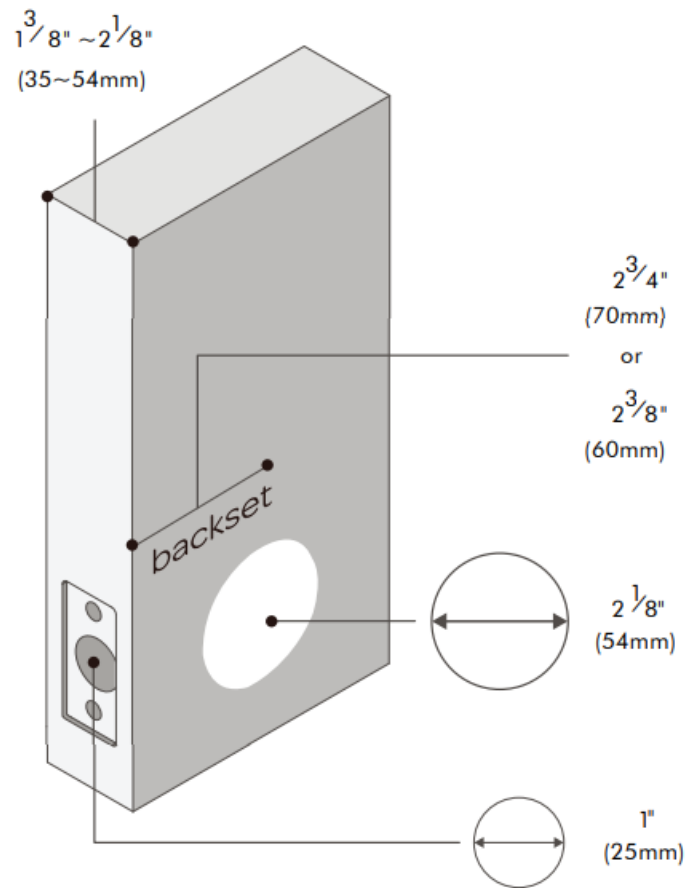
**Step 1:** Measure to confirm that the door is between 1  $\frac{3}{8}$ "~2/8" ( 35mm ~54mm) thick.

**Step 2:** Measure to confirm that the hole in the door is 2  $\frac{1}{8}$ " (54mm).

**Step 3:** Measure to confirm that the backset is either 2 $\frac{3}{8}$ " -2 $\frac{1}{4}$ " (60-70mm).

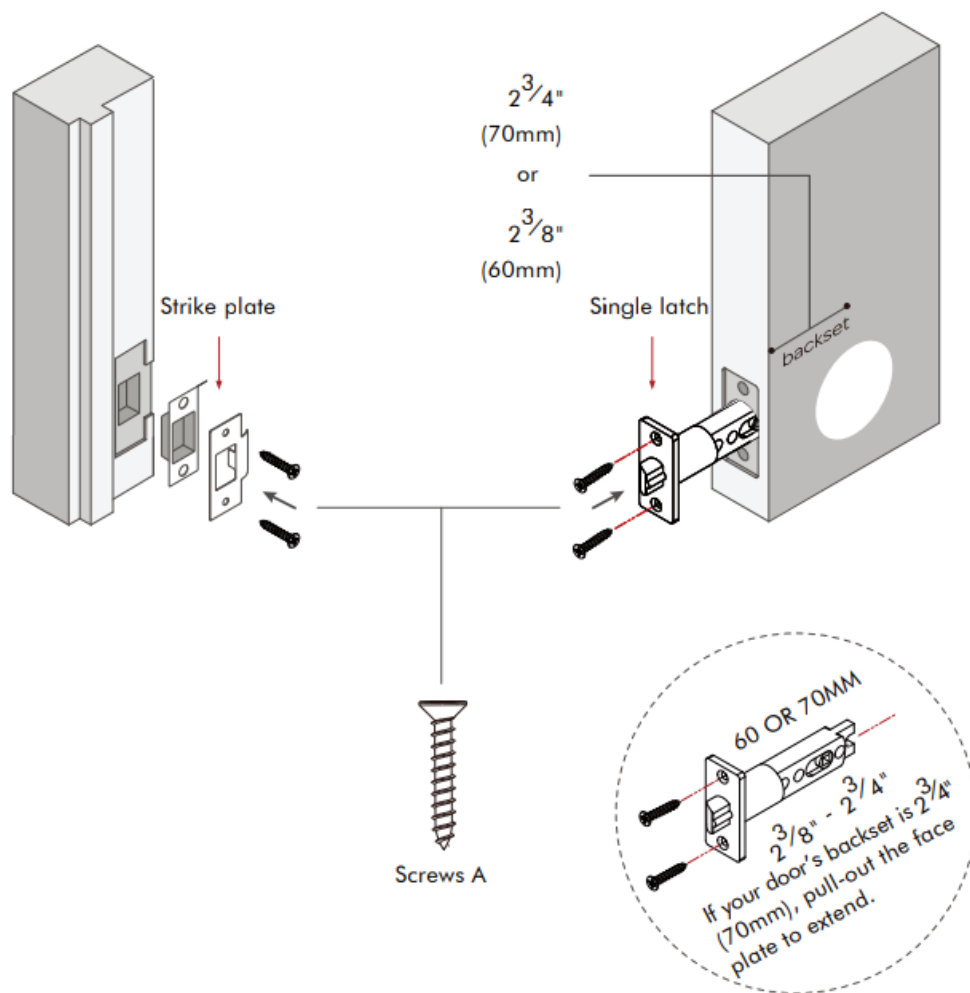
**Step 4:** Measure to confirm that the hole in the door edge is 1" (25 mm).

**Note:** If you have a new door, please drill the holes according to Drill Template.



## INSTALLING LATCH AND STRIKE PLATE

1. Please install the latch into the door, pay attention that the direction of the latch is opposite to the direction of closing the door, for example, if the door opens outwards, the latch should face inwards; if the door opens inwards, the latch should face outwards..
2. Install the strike into the door frame, make sure the latch can go into the strike smoothly.

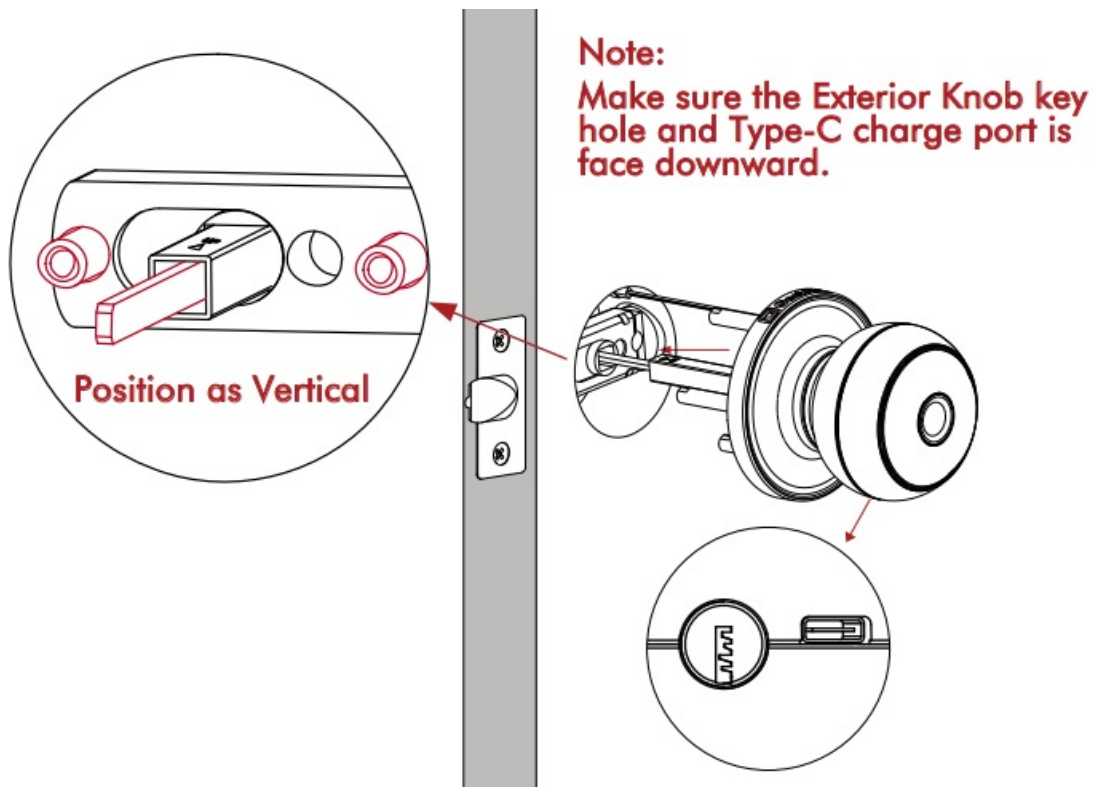


## INSTALLING EXTERIOR KNOB

Install the Exterior Knob, Insert the spindle and the standoffs into the corresponding holes of the single latch.

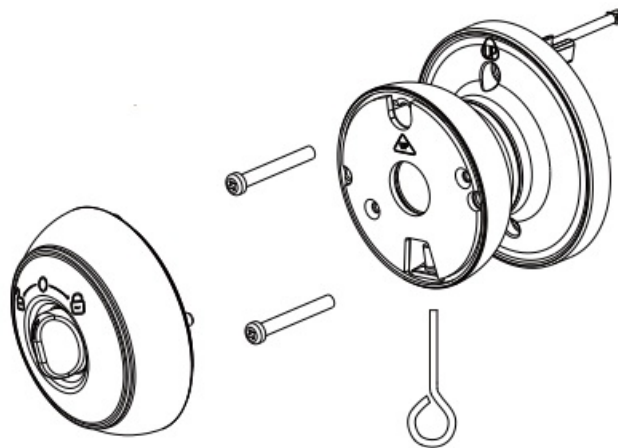
### **Note:**

DO NOT CLOSE THE DOOR until the door lock is fully installed.



### Step1

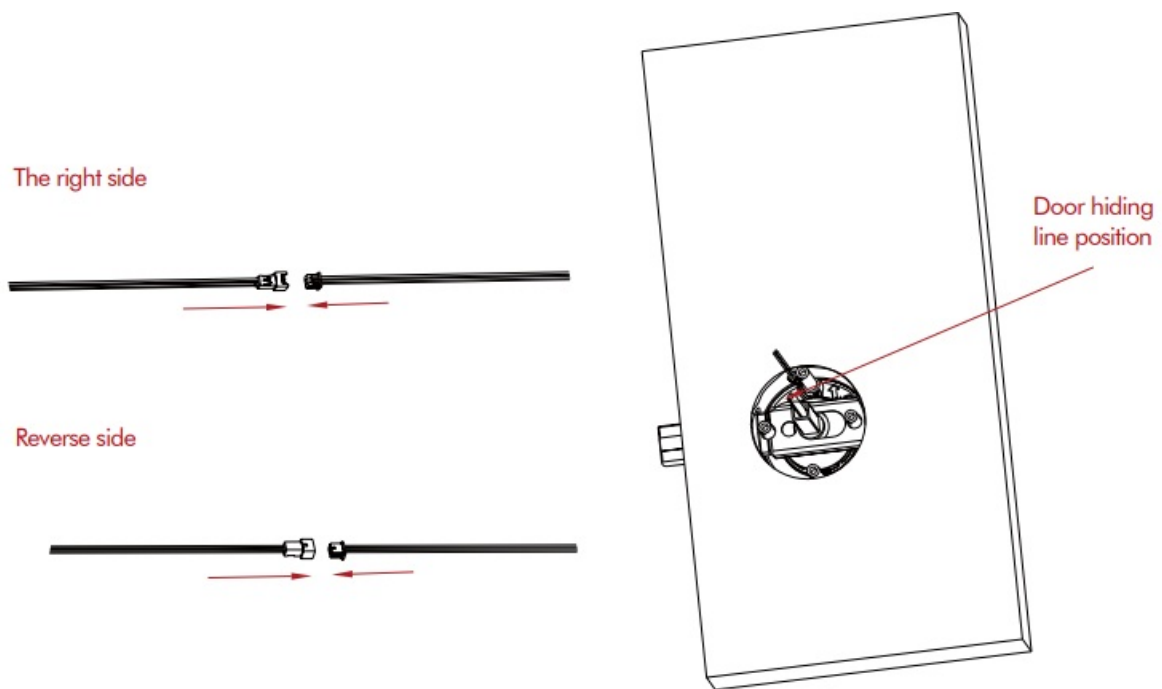
Pull out the interior knob with pin.



### Step2

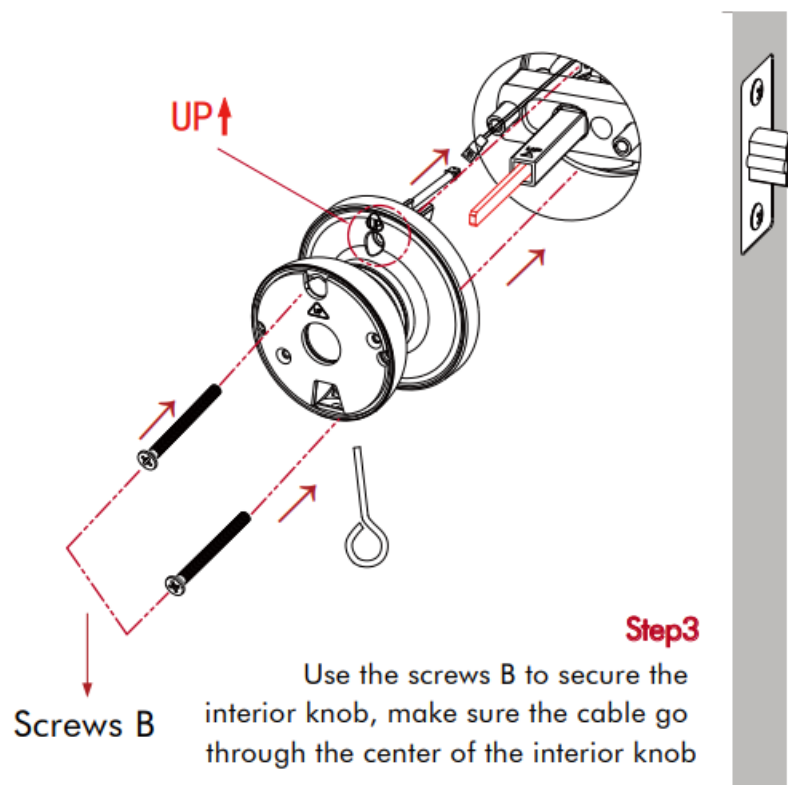
Please connect the cables and hide in the door as photo



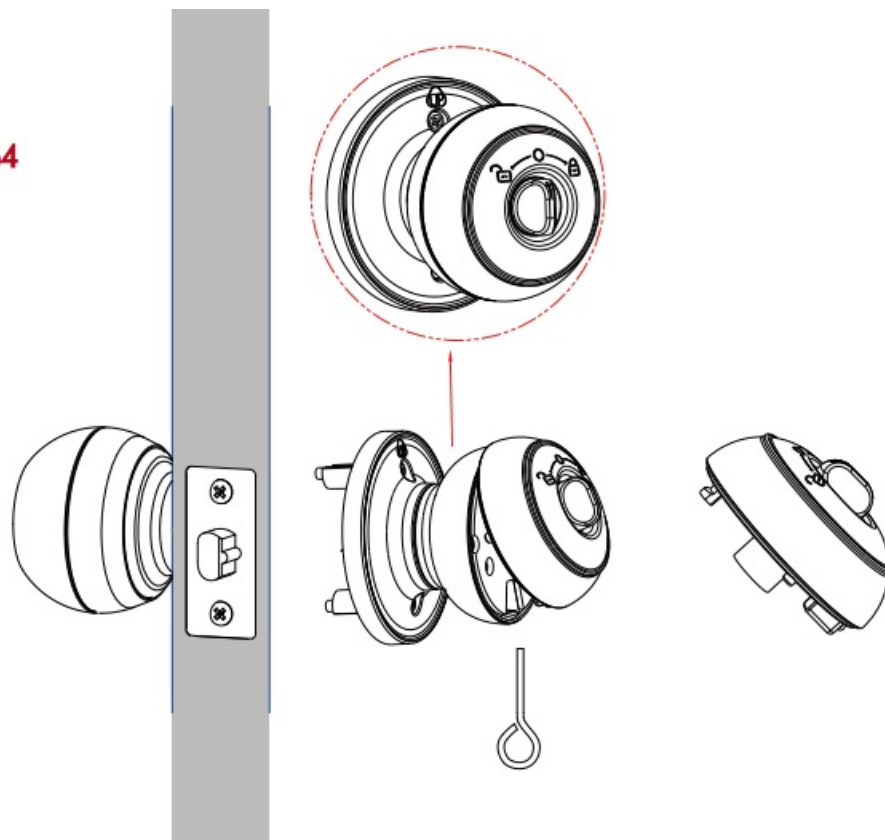


### Step3

Use the screws B to secure the interior knob, make sure the cable go through the center of the interior knob



**Step4**



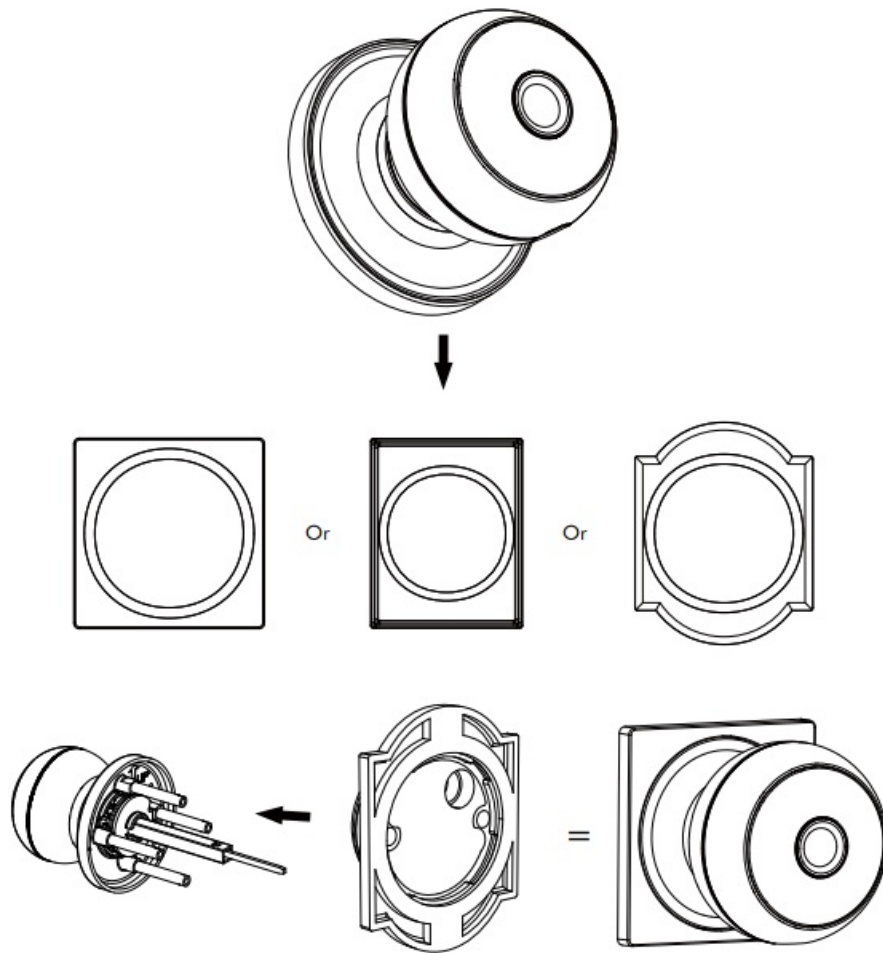
Now connecting the Battery Cover into the interior knob.

PLEASE MAKE SURE YOU TURN THE THUMB TURN INTO VERTICAL POSITION LIKE IN THE DIAGRAM.  
MAKE SURE THE THUMB TURN IS ALIGIN with the up logo on the interior knob body like in the diagram.

Once everything is confirmed, push in the knob until you hear a click sound.

## **HOW TO UPGRADE**

**K11-B2 TO K11-B1?**



Place our decoration plate (need to buy on our Amazon shop) behind the exterior panel , you will get a complete lock K11-B1.

## DOWNLOAD THE GEEKSMART APP

### 1. App Download Instructions

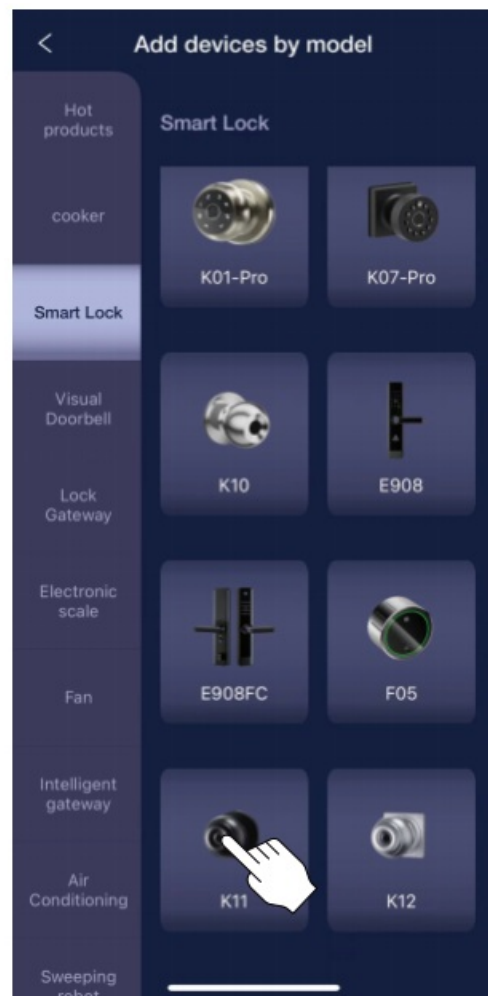
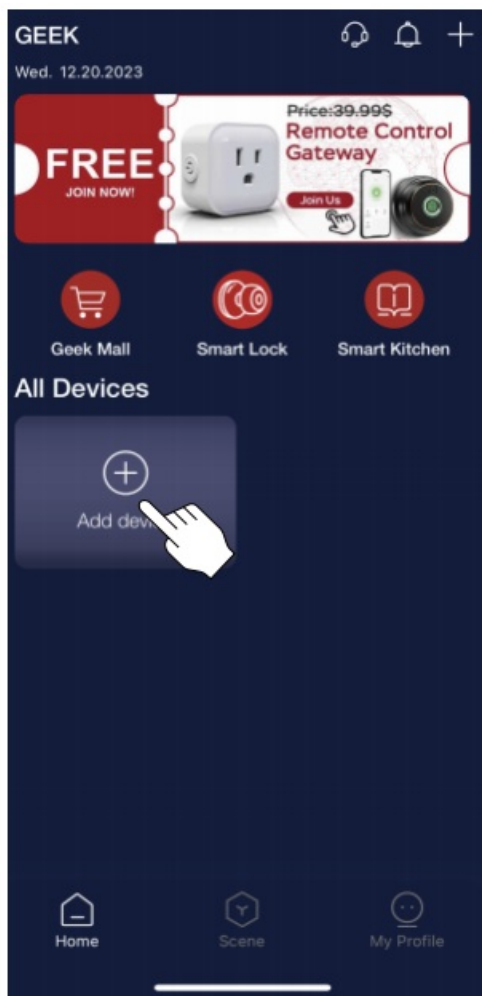
- Scan the QR code on the right you can use Android and iOS to download the APP.
- Android version software can be downloaded in the Google Play store. Search “GeekSmart”.
- iOS version of the software can be downloaded in the iPhone App Store. Search “GeekSmart”.

### 2. Register and log in with your E-mail address.

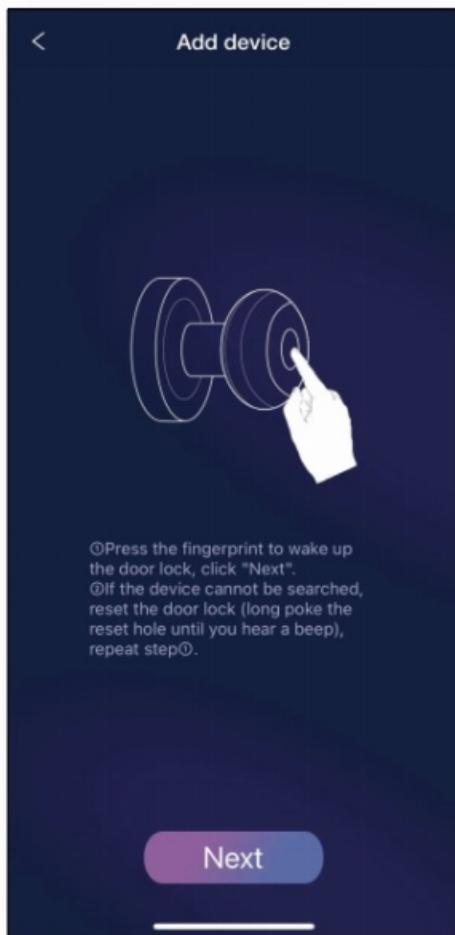


## ADDING DEVICE

1. Tap add device button.
2. Continue to follow the instruction on the App interface.

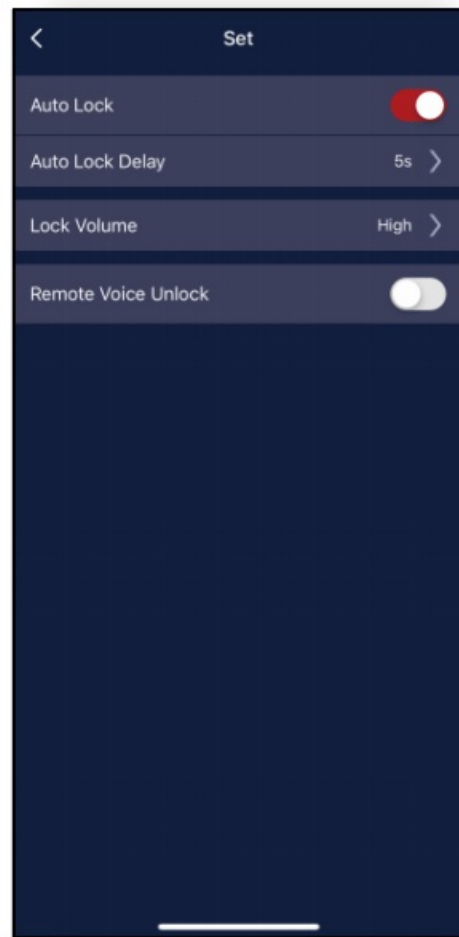
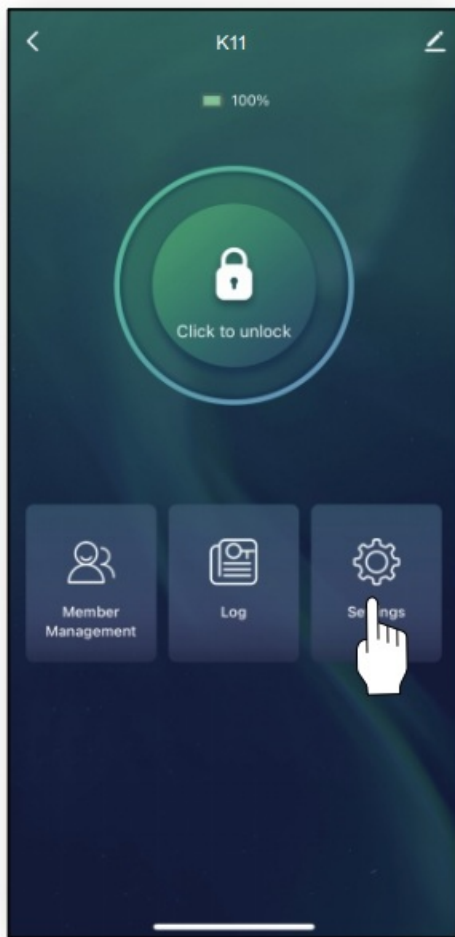


3. Select your lock.
4. Add complete.

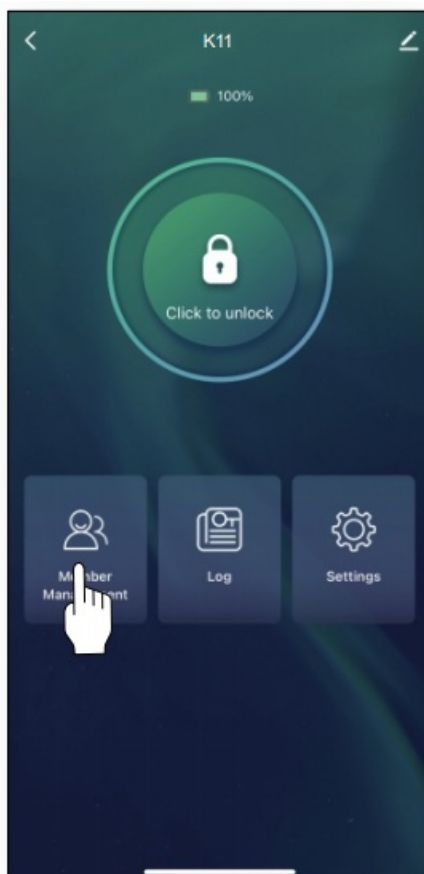


## HOW TO ADD FINGERPRINT BY GEEKSMART APP

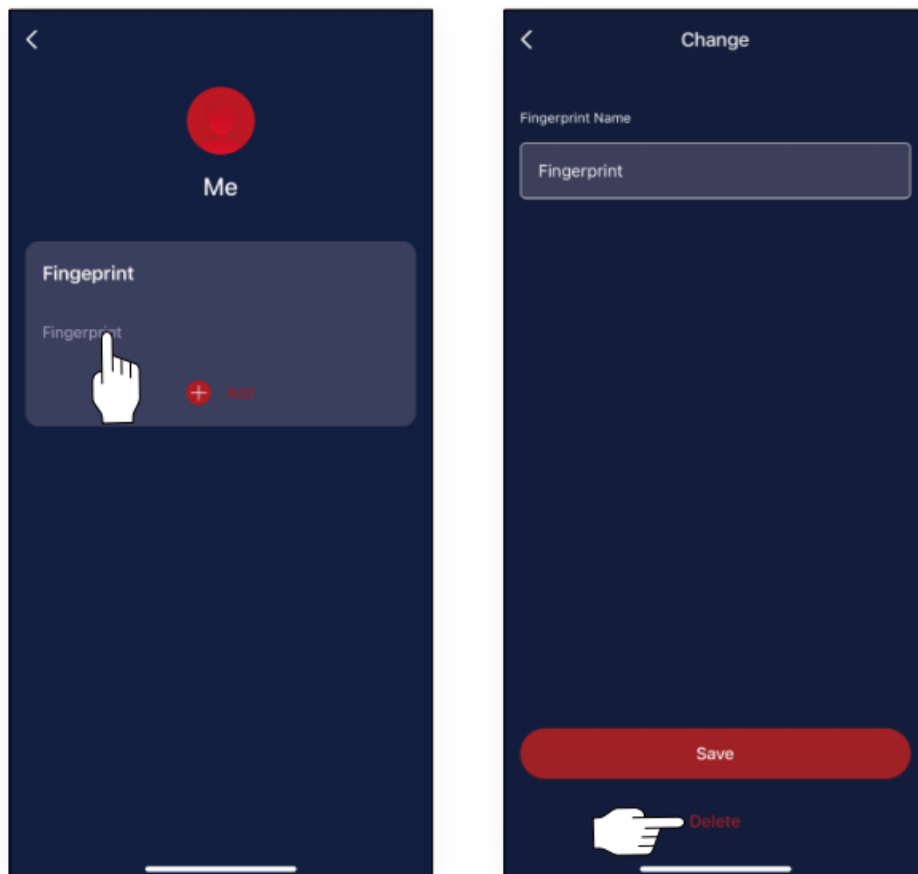
1. Click member management
2. Click me.
3. Continue to follow the instruction on the App interface.



1. Click member management.
2. Click me.
3. Continue to follow the instruction on the App interface.



1. Tap the fingerprint you want to delete.
2. Tap delete.



## SPECIFICATIONS

### Technical Parameters

No.	Name	Parameter Description
1	USB	Type-C/ 5V2A
2	Fingerprints max	50
3	Low power warning	3.5V±0.2
4	Voltage range	3.4V~4.2V
5	Stand-by current	<90uA
6	Operating Current	<500mA
7	Unlock time	≈1.5 sec
8	Range of working Temperature	23~131°F
9	Door thickness	1 <sup>3</sup> / <sub>8</sub> "~2 <sup>1</sup> / <sub>8</sub> " (35-54mm)
10	Material	Aluminium alloy+Stainless Steel
11	Power	Lithium battery

## FCC WARNING

Any Changes or modifications not expressly approved by the party responsible for compliance could void the user's authority to operate the equipment.

**Note:**

This equipment has been tested and found to comply with the limits for a Class B digital device, pursuant to part 15 of the FCC Rules. These limits are designed to provide reasonable protection against harmful interference in a residential installation. This equipment generates uses and can radiate radio frequency energy and, if not installed and used in accordance with the instruction, may cause harmful interference to radio communications. However, there is no guarantee that interference will not occur in a particular installation. If this equipment does cause harmful interference to radio or television reception, which can be determined by turning the equipment off and on, the user is encouraged to try to correct the interference by one or more of the following measures:

- Reorient or relocate the receiving antenna.
- Increase the separation between the equipment and receiver.
- Connect the equipment into an outlet on a circuit different from that to which the receiver is connected.
- Consult the dealer or an experienced radio/TV technician for help.

This device complies with part 15 of the FCC Rules. Operation is subject to the following two conditions: (1) This device may not cause harmful interference, and (2) this device must accept any interference received, including interference that may cause undesired operation.

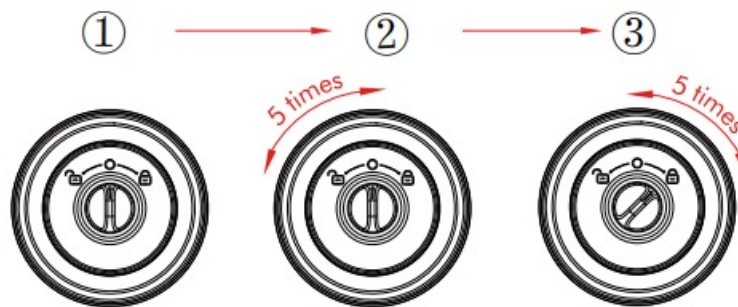
**FAQ**

**TROUBLESHOOTING**

**Q: How to reset the K11?**

**A:** Please select "restore factory setting" or "Delete device" by GeekSmart APP.

**A:** Turn the interior knob thumb turn to the left and return to the middle position 5 times and turn the thumb turn to the right and return to the middle position 5 times now you will hear a long buzzer that means the reset has been successfully.



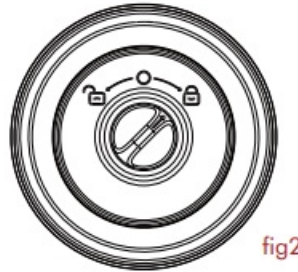
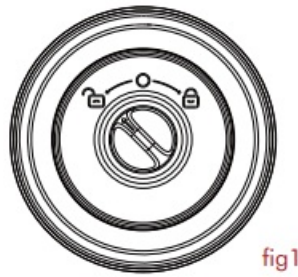
**Important Note:**

Please keep at least one key in secure location elsewhere as an extra precaution.

**Q: How to enable passage mode?**

**A:** Turn the thumb turn to the left and you will hear a beep sound, at which point the device is in passage mode status (fig1).



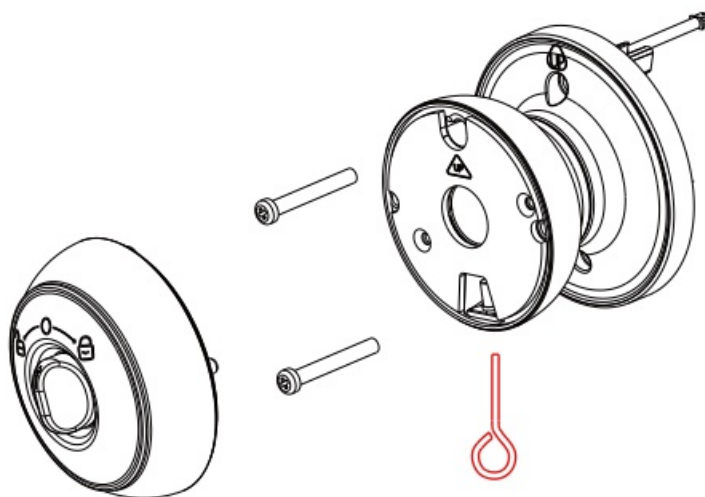


**Q: How to enable security mode?**

**A:** Turn the thumb turn to the right and you will hear a beep sound, at which point the receive is in security mode status (fig2).

**Q: How to remove the interior knob**

**A:** Use the Pin insert to the interior knob hole as shown, pull out the interior knob.



**WARNING**

K11 's Battery charging temperature:41°F-121°F',please charge the battery in this temperature range!!!!!!

How do I add a fingerprint to the lock?

To add a fingerprint, ensure the fingerprint light is blue indicating readiness. Follow the instructions on the manual or contact customer support for assistance.

What should I do if the lock shows a red light when trying to unlock?

A red light indicates a failed attempt. Make sure you are using the correct method to unlock (fingerprint or

mobile app) and try again. If the issue persists, contact customer support for further assistance.

Does K11 work with third-party accessories such as single latch?

It is recommended to use the original accessories for best performance and stability.

What notification will I receive when the battery is low?

After the fingerprint and mobile APP are successfully unlocked (the buzzer beeps once, the fingerprint reader flashes green and then flashes red). When you unlock the device through the mobile App, you will receive a push notification message with low battery warning. The remaining power can provide about 50 times to unlock. Please use the power bank to charge in time.

How can I unlock K11 if battery runs out?

Turn the key 90° to unlock, then turn the exterior knob to unlock the door. Connect a power bank to the knob with type-C cable as to activate for emergency access.

If I order 3 locks will anyone else have the same keys?

Each set of locks is keyed differently.

Accidentally deleted the lock from the app, what should I do?

1. You delete the lock in the app, but the lock is not emptied. Please RESET the lock. 2. Add again on the GeekSmart APP.

My bluetooth won't connect, what should I do?

Upgrade to the latest version of the firmware, authorize Bluetooth in the phone settings to allow access to the Geek Smart App. Try to connect again. If the connection is still not smooth, please contact our after-sale service

What is the difference between administrator/user?

The first user to add the knob by GeekSmart APP member is administrator, other members are users. Administrator fingerprint can unlock even in the security mode, but user cannot unlock in the security mode. You can enable or disable in the APP.

Documents / Resources

	<p><a href="#">GeekTale K11 Smart Lock</a> [pdf] User Manual K11, K11 Smart Lock, K11, Smart Lock, Lock</p>
--	---

References

- [🏠 Home](#)
- [📖 User Manual](#)

[Manuals+](#). [Privacy Policy](#)

This website is an independent publication and is neither affiliated with nor endorsed by any of the trademark owners. The "Bluetooth®" word mark and logos are registered trademarks owned by Bluetooth SIG, Inc. The "Wi-Fi®" word mark and logos are registered trademarks owned by the Wi-Fi Alliance. Any use of these marks on this website does not imply any affiliation with or endorsement.