



GeekTale K01 Smart Fingerprint Door Knob Lock User Manual

[Home](#) » [GeekTale](#) » GeekTale K01 Smart Fingerprint Door Knob Lock User Manual 

Contents

- [1 GeekTale K01 Smart Fingerprint Door Knob Lock](#)
- [2 Product description](#)
 - [2.1 Product Dimensions](#)
- [3 Specifications](#)
- [4 How To Use](#)
- [5 FCC Warning](#)
- [6 Documents / Resources](#)
- [7 Related Posts](#)

GeekTale

GeekTale K01 Smart Fingerprint Door Knob Lock



Welcome

Geek Tale bids you welcome to a world of smart home devices, smart locks, and smart surveillance. We at Geek Tale strive to explore and develop the smart home industry for the good of all. We use cutting-edge technologies to develop products fit and ready for the market. Please visit our website www.geektechnology.com

Before installing, please scan the QR codes to watch our easy step-by-step installation video.

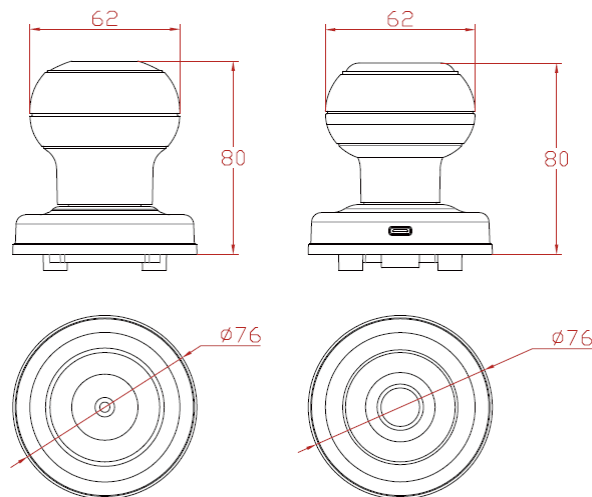
If you have questions regarding the installation process please contact us by mail service_lock@geektechnology.com or by phone 1-844-801-8880/(862)352-0406.



Scan the QR code for more Geek Tale Product: 5

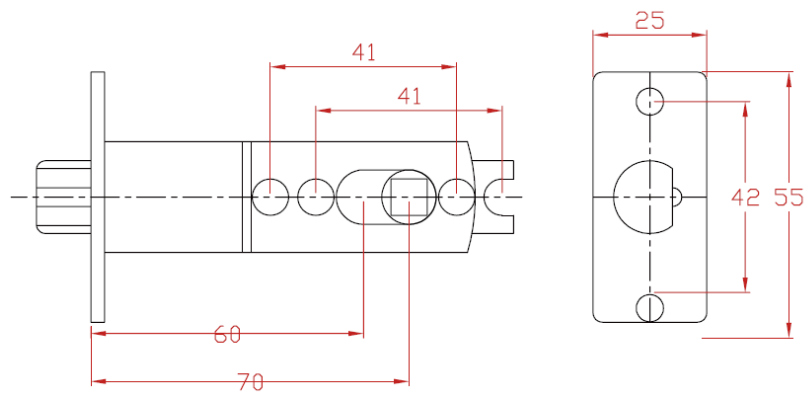
Product description

Product Dimensions



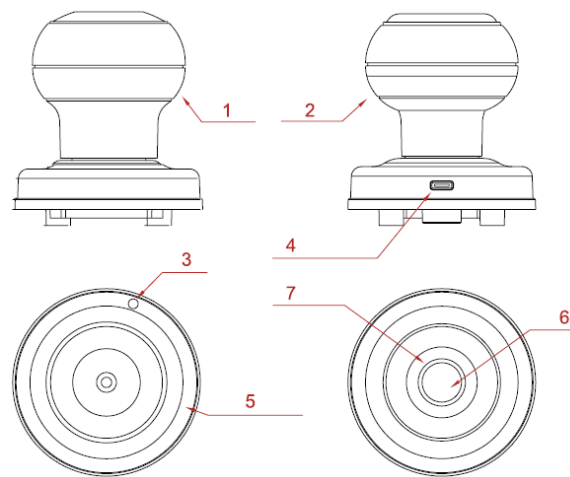
ONE Product Features

1. Unlock way: Fingerprint, Key, APP
2. Passmore
3. Emergency power interface: Type-C
4. Secure lock mode
5. Door thickness: 35-55mm
6. Suitable for residential areas, apartments, offices, office buildings, etc.



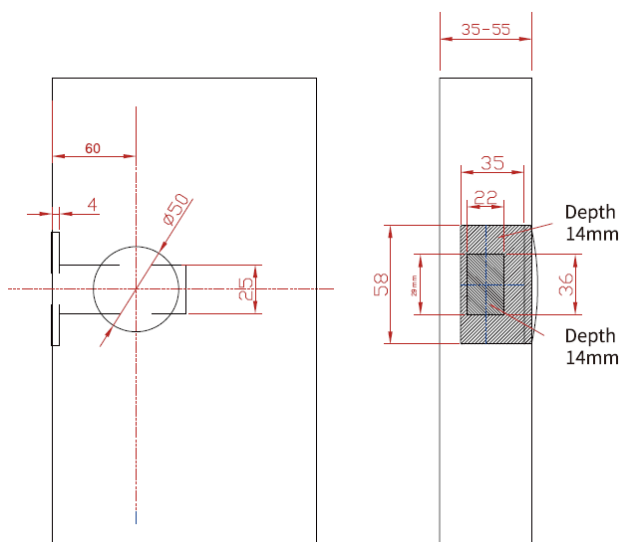
According to the opening of the lock body used, the distance of the square hole of the lock body needs to be adjusted according to the distance between the door edges. For the opening size, please refer to the opening diagram on the end page.

TWO Product Ribbon



1. Interior knob
2. Exterior knob
3. SET BUTTON: Initialization/ Passage mode enable/ Passage mode disable
4. Type-C USB interface
5. Battery cover
6. Fingerprint reader
7. LED Indicator

Lock Body Opening Diagram



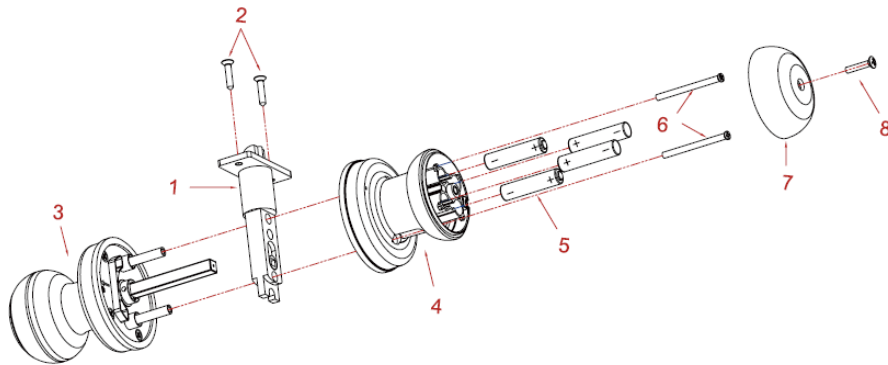
Specifications

Technical Parameters				
NO		Name	Parameter Description	
		USB	Type-C/ 5V2A	
2		Fingerprints max	20	
3		Low power warning	4.8V \pm 0.2	
4		Voltage range	4.5-6.5V	
5		Stand-by current	<90uA	
6		Working current	<250mA	
7		Unlock time	se1.5 sec	
	8	Range of working	-10-55°(
		Temperature		

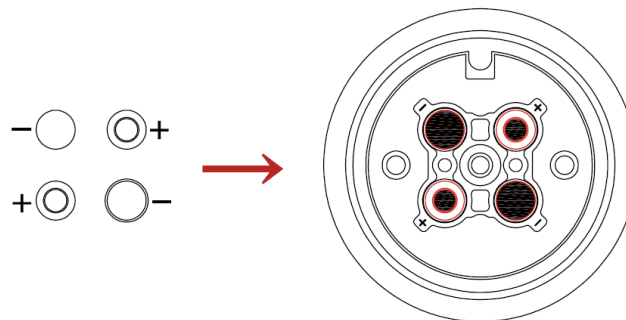
Packing List				
Name		PCS	Name	PCS
Exterior knob			Strike box	
Screw B		2	Manual	
Interior knob			Screw A	4
Key		2	Latch	
Data line			White box	
	Pin		Strike plate	

How To Use

Installation Method



1. Install the three-bar lock body (pay attention to the direction of the oblique tongue and the direction of opening the door). See Figure Step 1 ; unscrew the fixing screws of the lock body, as shown in Figure Step 2.
2. Install the front panel as shown in step 3, and then insert the square iron and the pair of pull studs into the corresponding holes of the three-bar lock body.
3. Install the rear panel as shown in step 4. After removing the rear panel lock from the box, use a screwdriver to unscrew the battery cover screws as shown in step 8. After the front and rear wirings are connected, install the rear panel. Pay attention to : The UP t faces upwards. After adjusting the rear panel, tighten the pair of pull.
4. Installation method of 7# alkaline battery: install the battery (note: pay attention to the direction of the positive and negative electrodes when installing the battery), as shown in the figure below;



5. Install the battery cover as shown in step 7;

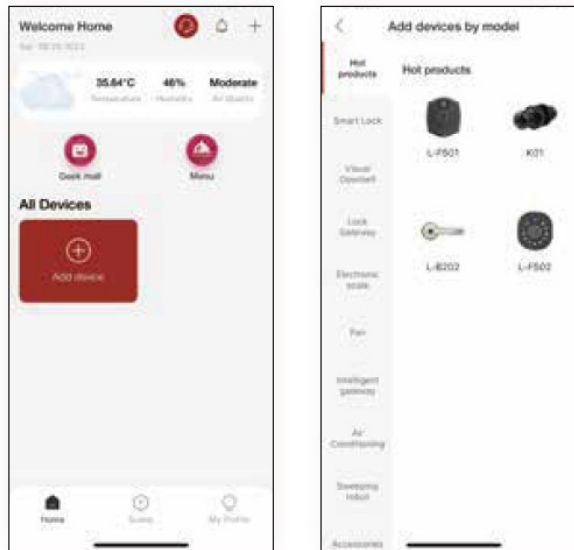
Add Bluetooth to APP (GEEK SMART)



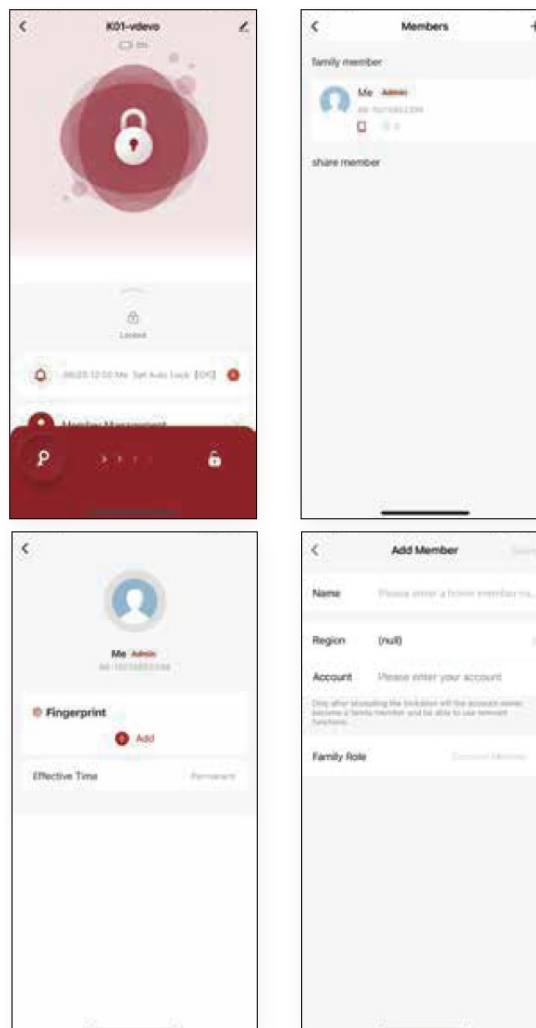
1. App Download Instructions

1. Scan the QR code to the right you can use Android and iOS to download the APP.
2. Android version software can be downloaded in the Google Play store. Search "GeekSmart".

3. iOS version of the software can be downloaded in the iPhone App Store. Search “GeekSmart”.
2. Register and log in with your mobile phone number.
3. Press the “+” to add a device, find “Smart lock” and record “KOI”, click and follow the prompts to complete the device addition and use. (Note: Touching the fingerprint head on the APP and the lock link is faster to wake up the Bluetooth. After the adding Bluetooth, the lock will exit experience mode).

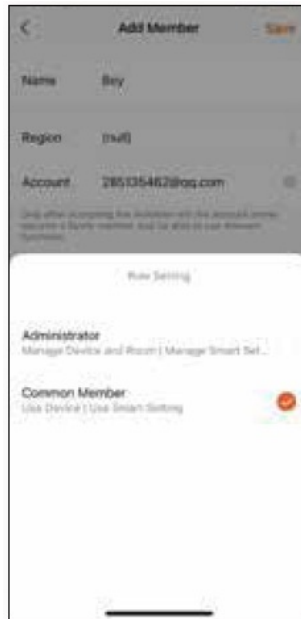


4. Add administrator fingerprint (to operate on the lock side) Member management → Members → click “+” → fill in name and other data → Role setting choose “Administrator” → back to Members interface → click the account you just create → click (add) → (operate according to the prompt displayed on the mobile phone), after the addition is successful, the fingerprint can be unlocked.

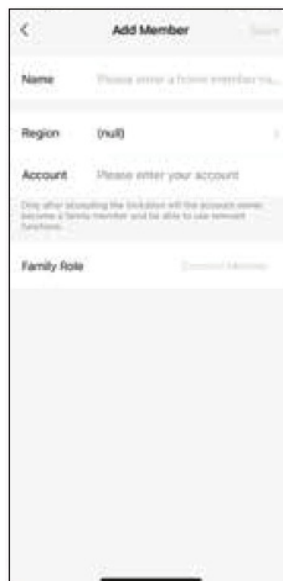


NOTE: ONLY the first BLE connotted mobile phone can be the priority Ad min, who have the authority to

manage the lock, including adding or deleting the fingerprint, BLE unlock; any other users or admins don't have the authority to manage the lock, BLE unlock or remote control.

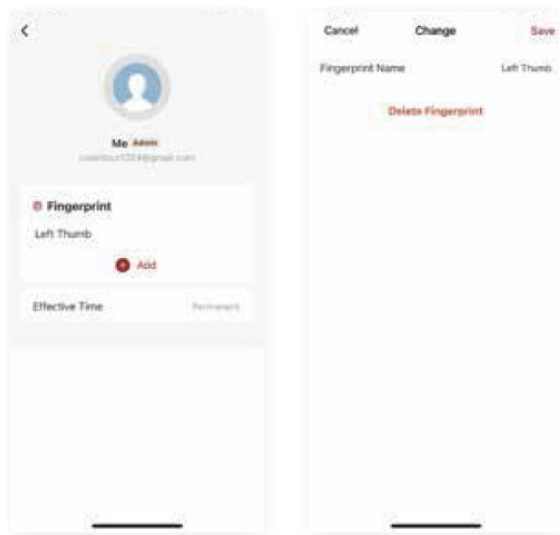


5. Add ordinary user fingerprint (operate on the lock side) Member management →Members→ click "+" →fill in name and other data → Role setting choose "Common Member "→back to Members interface→ click the account you just create→ click (Add)→ (operate according to the prompt displayed on the mobile phone), after the addition is successful, the fingerprint can be unlocked.



6. Delete fingerprint (operate on the lock side) Member management→ click (fingerprint icon) of XXXX → click (fingerprint to be deleted)→ (operate according to the prompt displayed on the mobile phone), after the deletion is successful, the fingerprint cannot be unlocked.

Note: The lock end should retain an administrator fingerprint.



7. Remote unlocking

Settings→ Remote unlock click (Open icon). Note: The gateway can only be unlocked remotely.

1. Auto lock(Passage mode enable/disable)

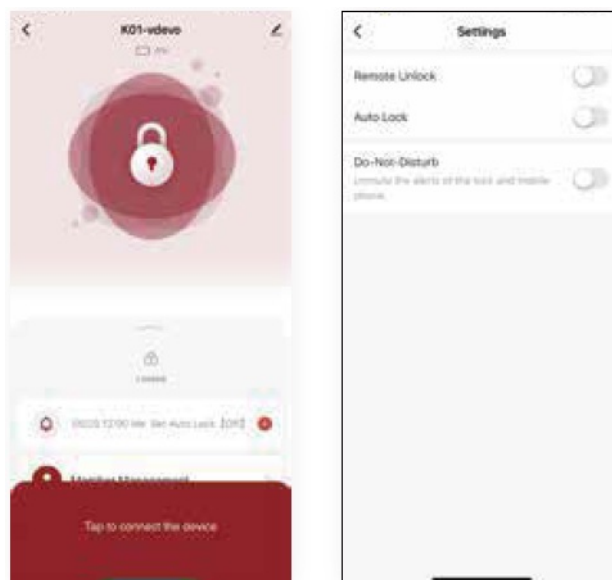
1. How to enable the passage mode?

APP Settings→ Auto-lock (icon is off),or you can short press the SET BUTTON on the back knob, please at once unlock by fingerprint or APP, the lock will be always in unlock mode (Passage mode is on).

2. How to disable the passage mode?

APP APP Settings→ Auto-lock (icon is on)or short press the SET BUTTON on the back knob, then unlock by fingerprint or APP, Passage mode is off.

3. Any time after unlocking by fingerprint or APP, the lock will be out of Passage mode (Passage mode is off).



8. Automatic lock

1. What is security mode :When you need more security or privacy, will can choose Security mode which Only master fingerprint or APP can unlock your door

2. How to enable security mode

APP Settings-Security mode (icon is on),choose the time you want to enter security mode -success

3. How to disable security mode

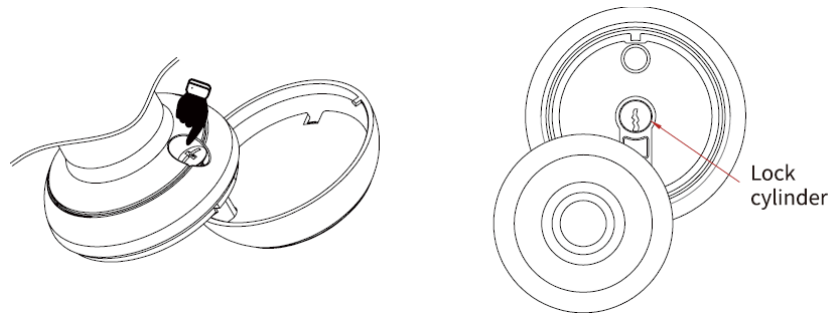
APP Settings-Security mode (icon is off)– success

Note: Other operations are performed according to the prompts on the mobile APP interface.

Key Unlock

Press the screw in the back of the front knob, the fingerprint head cover will come out for you to easily pull and turn.

Pull out the fingerprint head cover, turn the key 90° to unlock, then turn the front ball to open the door.



Indicator Light

1. Add fingerprint

The link is successful (the fingerprint head light turns blue to indicate the prompt).

2. Fingerprint, mobile phone APP unlock

Success (the buzzer beeps once, and the fingerprint headlight flashes green to indicate prompt).

Failed (the buzzer beeps twice, the fingerprint headlight flashes red to indicate prompt).

3. Low power

After the fingerprint and mobile APP are successfully unlocked (the buzzer beeps once, the fingerprint head flashes green and then flashes red).

4. In the factory setting state

Press the setting button (the LED display light is colored) and press the fingerprint operation 6 times after the fingerprint operation is completed.

Other Instructions

1. In the factory state, any fingerprint can be unlocked.

2. How to get back to factory state (experience mode) ? Press the set button in the back Knob for 5 second (the buzzer beeps once, the fingerprint head flashes green) Back to factory state succeed.

FCC Warning

Any Changes or modifications not expressly approved by the party responsible for compliance could void the user's authority to operate the equipment.

Note: This equipment has been tested and found to comply with the limits for a Class B digital device, pursuant to part 15 of the FCC Rules. These limits are designed to provide reasonable protection against harmful interference in a residential installation. This equipment generates uses and can radiate radio frequency energy and, if not installed and used in accordance with the instructions, may cause harmful interference to radio communications. However, there is no guarantee that interference will not occur in a particular installation.

If this equipment does cause harmful interference to radio or television reception, which can be determined by

turning the equipment off and on, the user is encouraged to try to correct the interference by one or more of the following measures:

- Reorient or relocate the receiving antenna.
- Increase the separation between the equipment and receiver.
- Connect the equipment into an outlet on a circuit different from that to which the receiver is connected.
- Consult the dealer or an experienced radio/TV technician for help.

This device complies with part 15 of the FCC Rules.

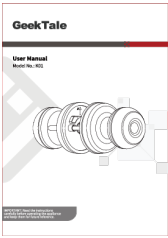
Operation is subject to the following two conditions:

1. This device may not cause harmful interference, and
2. this device must accept any interference received, including interference that may cause undesired operation.

GEEK TECHNOLOGY CO. LTD.

120 Route 46 West,
Parsippany,NJ 07054,
Toll Free
1-844-801-8880/(862)352-0406

Documents / Resources

	<p>GeekTale K01 Smart Fingerprint Doorknob Lock [pdf] User Manual K01, K01 Smart Fingerprint Doorknob Lock, Smart Fingerprint Doorknob Lock, Fingerprint Doorknob Lock, Doorknob Lock, Lock</p>
---	---