




Geekpure SF-03 Shower Filter Instruction Manual

[Home](#) » [Geekpure](#) » Geekpure SF-03 Shower Filter Instruction Manual 

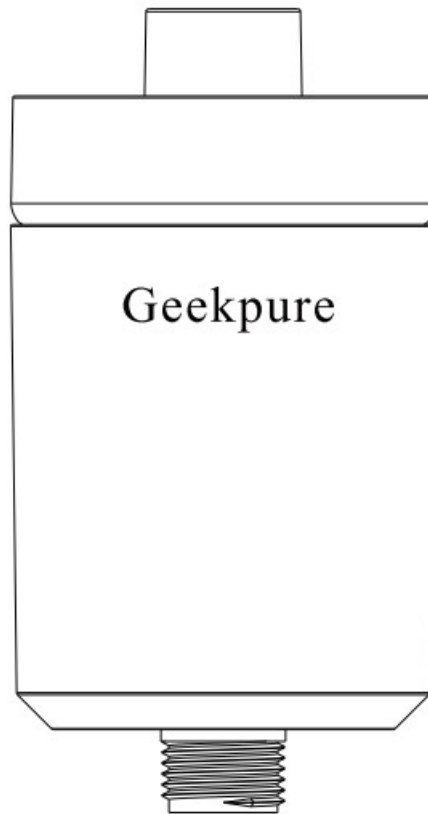
Geekpure

SF -03 Shower Filter
Instruction Manual

Contents

- [1 SF-03 Shower Filter](#)
- [2 INSTALLERS:](#)
- [3 General Introduction](#)
- [4 Technical Data](#)
- [5 Installation](#)
- [6 Replacement steps](#)
- [7 Frequently Asked Questions:](#)
- [8 Troubleshooting](#)
- [9 Documents / Resources](#)

SF-03 Shower Filter



Thanks for your choosing Geekpure Product.

INSTALLERS:

1. PLEASE READ THE INSTRUCTION BEFORE INSTALLING AND USING THIS FILTER.
2. IT IS RECOMMENDED TO WAIT UNTIL THE ENTIRE SYSTEM IS PRESSURIZED AND RE-CHECK FOR ANY LEAKS BEFORE LEAVING INSTALLATION SITE.
3. THERE IS PROTECTION MATERIAL IN THE FILTERS, PLEASE KEEP FLUSH THE FILTERS AT LEAST 5-10 MINUTES.
4. IT IS NORMAL FOR SOME BLACK CARBON FINES TO APPEAR IN THE WATER WHEN YOU FLUSH NEW FILTER. THE WATER PRODUCED SHOULD BE EMPTIED AND NOT USED.

General Introduction

The main function of this shower filter is to remove the suspended particles, organics, taste and odor, as well as chlorine and chlorinated lime in water to refresh your skin and hair.

The filter cartridge is replaceable, please replace it on time to ensure the performance.

Technical Data

Model No.: SF-03

Pure Flow Rate: 5L/min

Feed Water Pressure: 0.1-0.4Mpa

Feed Water: Municipal tap water

Operation temperature: 40-110°F / 5-45°C Product dimension: 72*72*135mm

Media content:

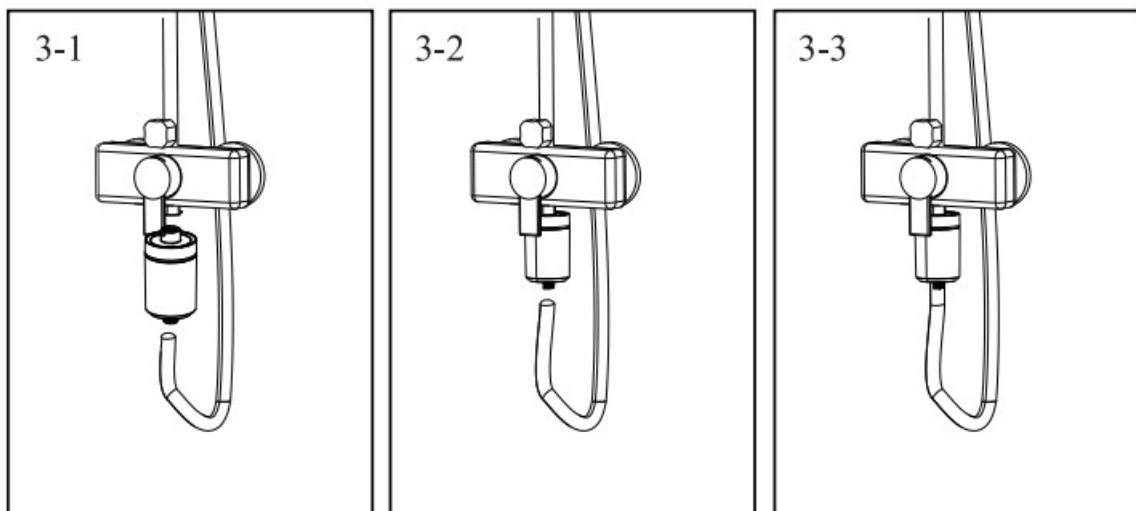
PP sediment Calcium sulfite granules High quality coconut carbon Vitamin C mineral balls Far infrared mineral balls

Installation



Warning: please make sure the seal ring is in the correct position

- a) Take off the flexible pipe of shower head from the main water valve and install this shower filter to it (the female end will connect with main water valve). See fig -1
- b) connect the other end of this shower filter (male end) to the flexible pipe See fig 3-2.
- e) flush the shower filter for S-10 minutes before use.

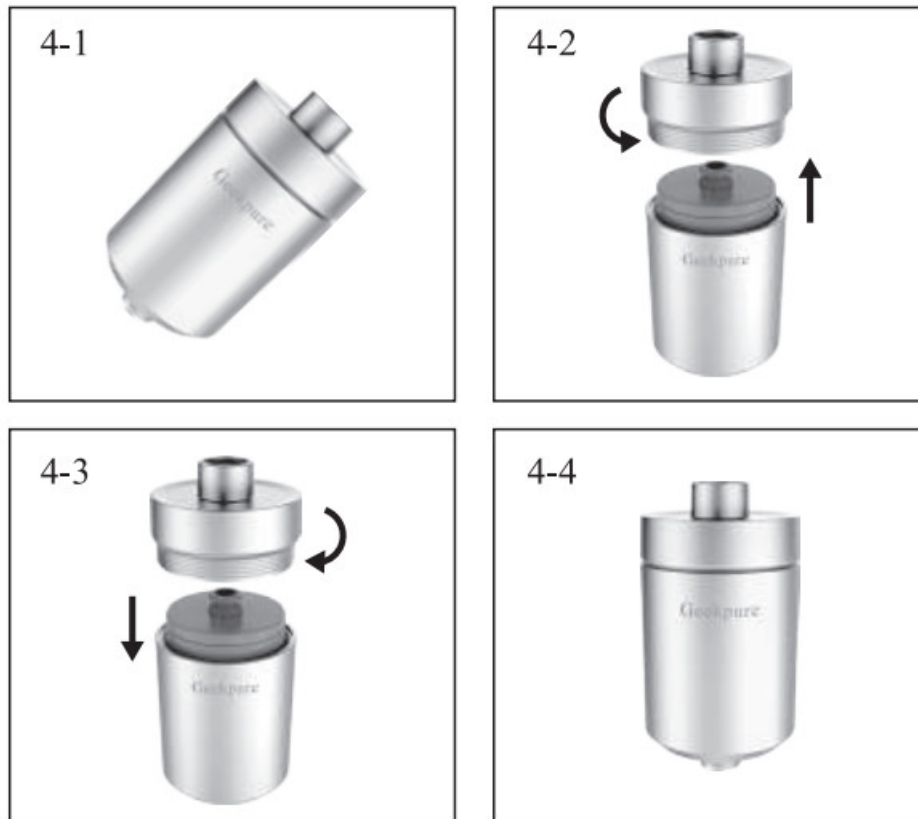


Replacement steps

1. Remove the complete shower filter from main water valve.
2. Take off the filter lid by turning it anticlockwise and take out the used filter cartridge.
3. Insert a new filter cartridge and tighten the filter lid by turning it clockwise.
4. After replacement, install the complete shower filter back to main water valve. Flush the shower filter for S-10 minutes before use.

Waring: please make sure the seal ring is in the correct position.

Recommended service life: 3-6 months (it may vary in different feed water condition and frequency of use).



Frequently Asked Questions:

(1) I cannot feel any difference in my water

(2) Using a TDS meter to measure water quality

TDS meters measure the conductivity of the water, which can help identify salts or other impurities which have positive charges. However, common disinfection by-products in water, such as chlorine, iron, chloramine etc, do not impact the conductivity of the water. So they would not be picked up by a TDS meter. Put another way, TDS meters cannot detect toxic chemicals such as Chlorine or Chloramine, therefore they should not be relied on to measure water quality. The best way to test the effectiveness of the shower filter would be to use a chlorine colorimeter or chlorine test strips. How do I know if the filter is working? Our products target harmful chemicals and byproducts in water. These chemicals produce distinctive smells and can dry skin, hair and nails. You can look for these as signs that the product is working:

- Reduced or eliminated chlorine smell
- Less dry itchy skin
- Stronger, more manageable hair
- Strong and healthy-looking nails
- Soap which lathers up more, to create more bubbles.

Troubleshooting

If there is leakage, check the O-rings to make sure they are seated in their proper grooves. If missing O-rings, use Teflon Tape on male threads.

If it is not clear and you need further support, please contact with us.

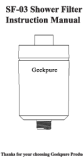
Email: tech@geekpure.cc

Geekpure

Geekpure Water Group

www.geekpure.cc

Documents / Resources

 <p>SF-03 Shower Filter Instruction Manual</p> <p>Geekpure</p> <p>Thanks for your choosing Geekpure Product.</p>	<p>Geekpure SF-03 Shower Filter [pdf] Instruction Manual</p> <p>SF-03 Shower Filter, SF-03, Shower Filter, Filter</p>
---	---

Manuals+