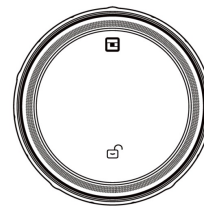


Geek F05 Keyless Entry Smart Lock



Geek F05 Keyless Entry Smart Lock User Manual

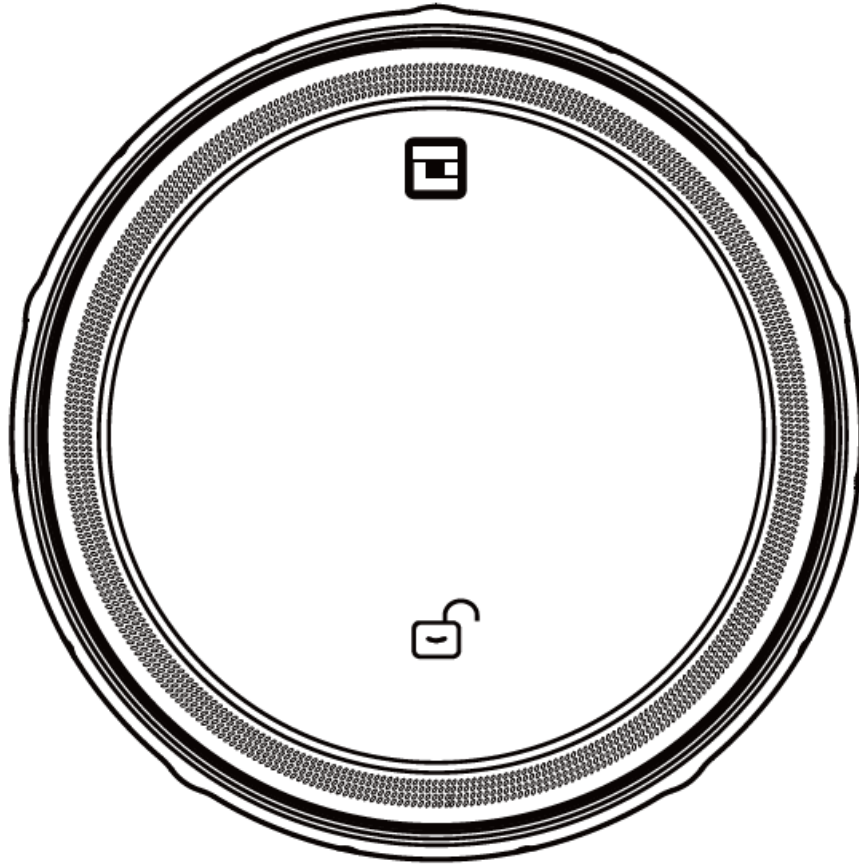
[Home](#) » [GEEK](#) » [Geek F05 Keyless Entry Smart Lock User Manual](#) 

Contents

- [1 Geek F05 Keyless Entry Smart Lock](#)
- [2 Product Introduction](#)
- [3 FAQ](#)
- [4 PRODUCT INTRODUCTION](#)
- [5 INCLUDED IN THE BOX](#)
- [6 ASSEMBLY DIAGRAM](#)
- [7 DIMENSIONS](#)
- [8 DOWNLOAD THE GEEKSMART APP](#)
- [9 ADDING DEVICE](#)
- [10 TROUBLESHOOTING](#)
- [11 FCC statement](#)
- [12 SPECIFICATIONS](#)
- [13 Documents / Resources](#)
 - [13.1 References](#)



Geek F05 Keyless Entry Smart Lock



Specifications

- **Model No.:** F05 Compatible with single-cylinder deadbolt locks
- **Door Thickness:** 1 1/2" to 2 1/8" (38mm to 55mm)
- **Door Hole Diameter:** 2 1/8" (54mm)
- **Backset:** 2 3/8" to 2 3/4" (60-70mm)
- **Door Edge Hole Diameter:** 1" (25mm)

Product Introduction

This Keyless Entry Smart lock is designed for deadbolt locks commonly found in the United States. It allows users to keep their existing mechanical key and can be installed without replacing the entire lock within just 5 minutes.

Product Usage Instructions

Check the Door's Dimensions

1. **Measure door thickness:** 1 1/2" to 2 1/8" (38mm to 55mm).
2. **Check door hole diameter:** 2 1/8" (54mm).
3. **Confirm backset distance:** 2 3/8" to 2 3/4" (60-70mm).
4. **Verify door edge hole diameter:** 1" (25mm).

Install Latch and Strike Plate (Optional)

1. Insert latch into the door.

2. Mount strike plate on the door frame.

Install Mounting Plate

1. Remove the knob panel.
2. Turn on the knob panel switch.
3. Tape the original door lock.
4. Uninstall the existing back panel.
5. Install mounting plate and rubber seal inside the door using Screws B.

FAQ

- **Q:** Can this smart lock work with any type of deadbolt lock?
- **A:** Our smart lock is compatible with single-cylinder deadbolt locks. Make sure to choose the correct adapter from the provided options for proper installation.
- **Q:** What are the door dimensions required for installing this smart lock?
- **A:** The door should have a thickness between 1 1/2" to 2 1/8" (38mm to 55mm), a hole diameter of 2 1/8" (54mm), a backset of either 2 3/8" or 2 3/4" (60-70mm), and a door edge hole diameter of 1" (25mm).

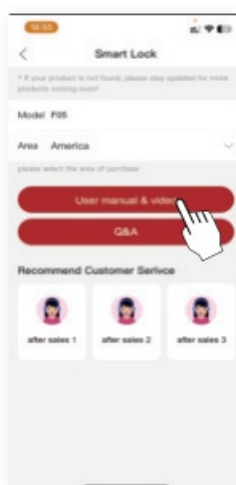
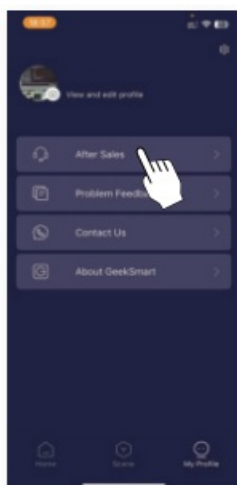
WELCOME

Geek Tale bids you welcome to a world of smart home devices, smart locks, and smart surveillance. We at Geek Tale strive to explore and develop the smart home industry for the good of all. We use cutting-edge technologies to develop products fit and ready for the market. Please visit our website www.geektechnology.com Before installing, please scan the QR codes to watch our easy step-by-step installation video. If you have questions regarding the installation process, please contact us by mail service lock@geektechnology.com or by phone 1-[844-801-8880](tel:844-801-8880).

If you don't have time to read the user manual, you can watch the video in our App.



Scan the QR code for more Geek Tale Products



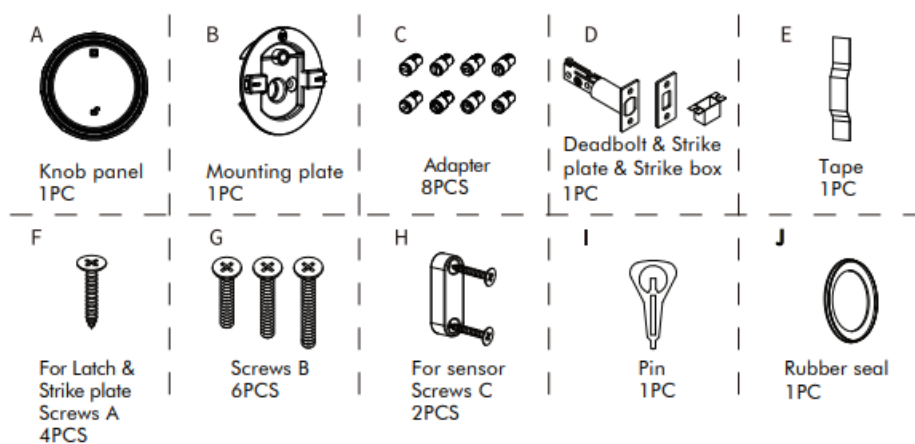
We strongly suggest you watch the video.

PRODUCT INTRODUCTION

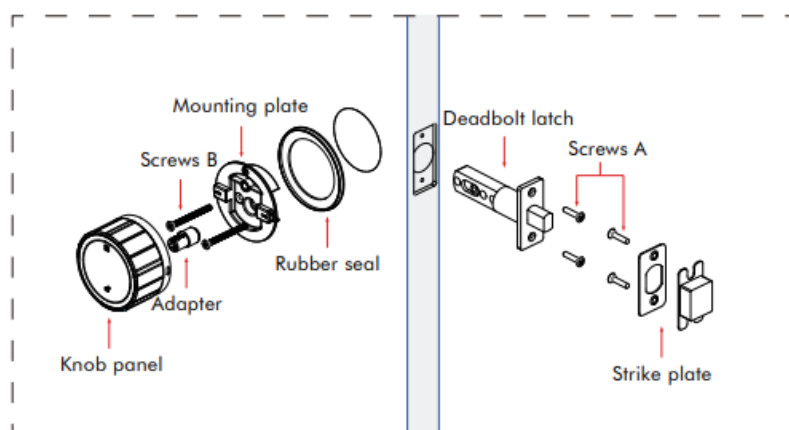
This Keyless Entry Smart lock is specially designed for the deadbolt lock commonly found in old existing in the United States. It does not require the user to replace the lock on their family's door, and users can still use their existing lock's mechanical key. If necessary, the lock body can be replaced in just 5 minutes.



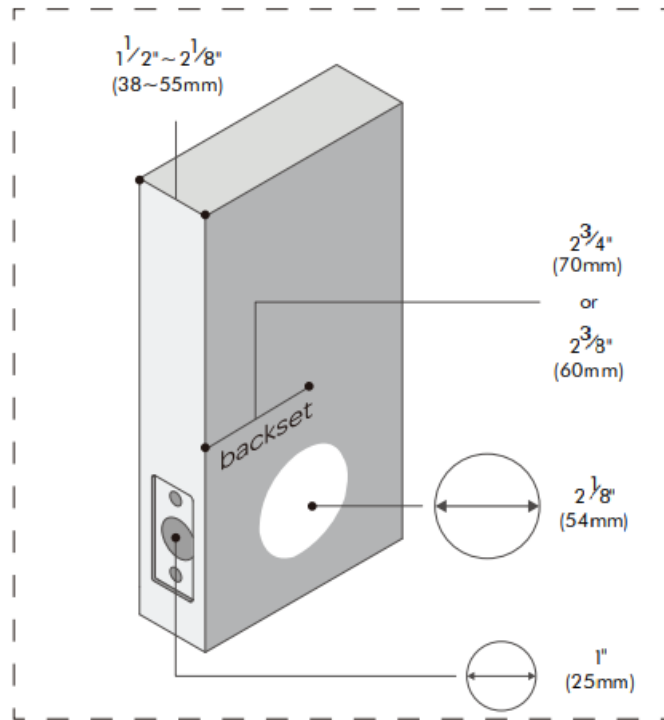
INCLUDED IN THE BOX



ASSEMBLY DIAGRAM



DIMENSIONS



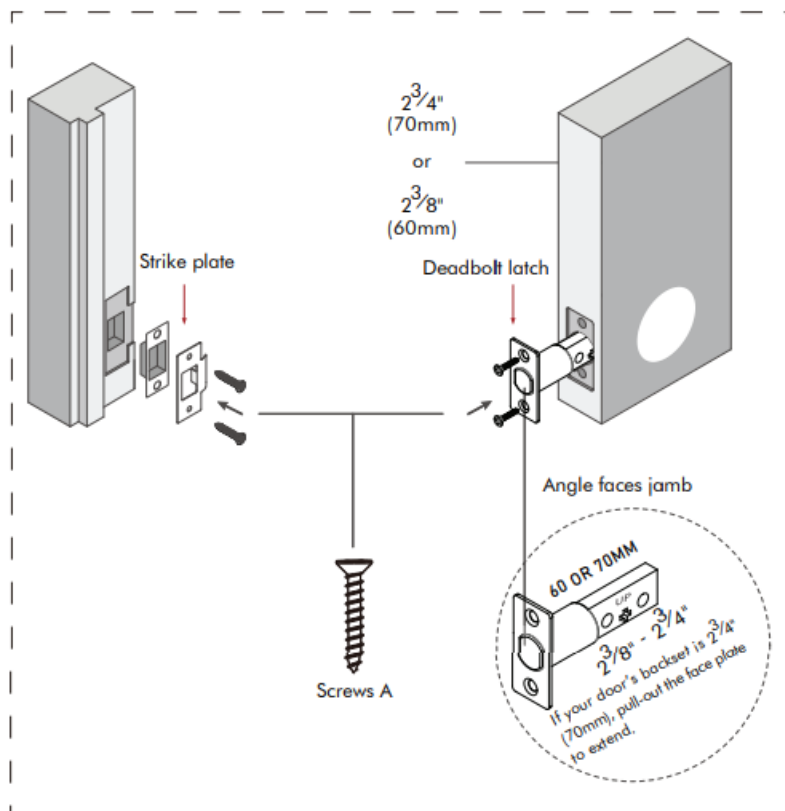
CHECK THE DOOR'S DIMENSIONS

- **Step 1:** Measure to confirm that the door is between 1 1/2" ~ 2" (38mm ~ 55mm) thickness.
- **Step 2:** Measure to confirm that the hole in the door is 2 1/8" (54mm).
- **Step 3:** Measure to confirm that the backset is either 2 3/8" – 2 3/4" (60-70mm).
- **Step 4:** Measure to confirm that the hole in the door edge is 1" (25 mm).

Note: If you have a new door, please drill the holes according to Drill Template.

INSTALL LATCH AND STRIKE PLATE(OPTIONAL)

1. Install a latch into the door, and make sure the latch fits inside the door opening.
2. Install the strike into the door frame, and make sure the latch can go into the strike smoothly.

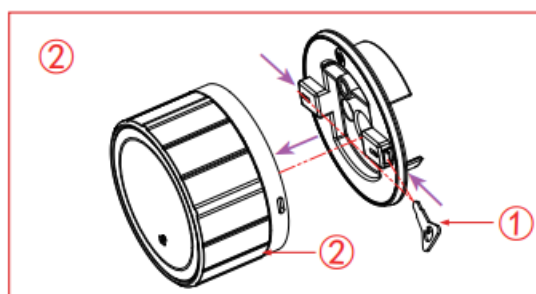
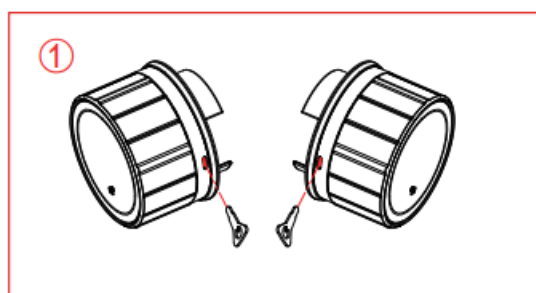


Installation Instruction

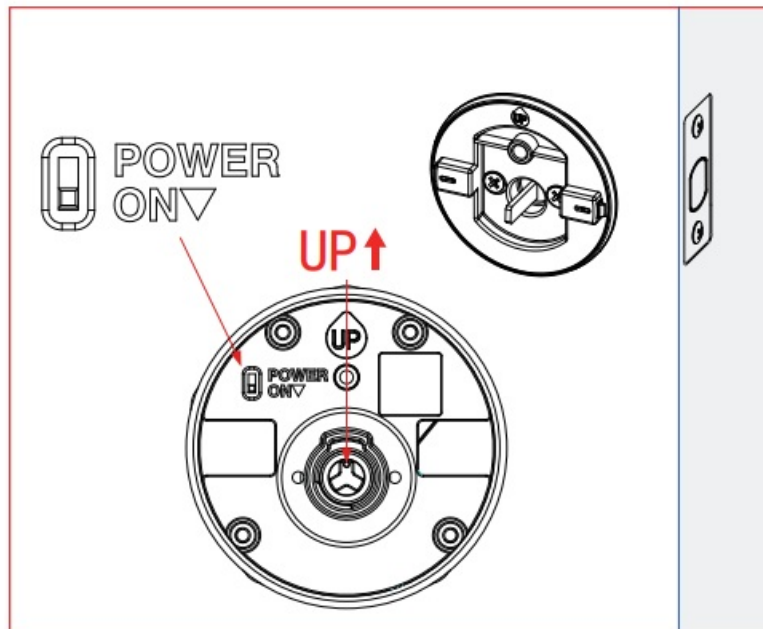
INSTALL MOUNTING PLATE

DO NOT CLOSE THE DOOR UNTIL THE DOOR LOCK IS FULLY INSTALLED AND KEEP THE ORIGINAL LATCH OPEN.

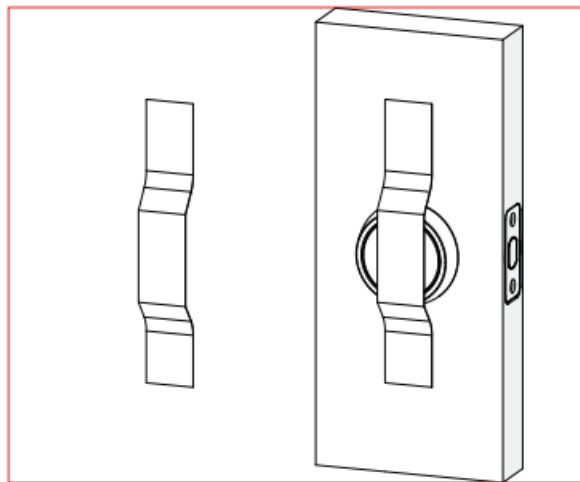
- Step 1: Please remove the knob panel. Use the Pin insert the knob panel hole as shown, and pull out the knob panel.



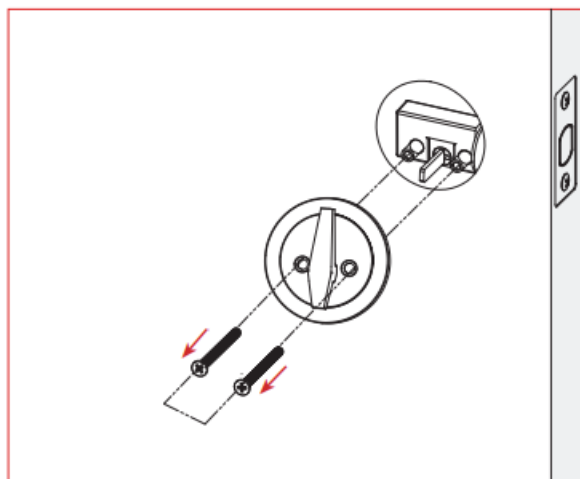
- Step 2: Please turn on the knob panel switch.



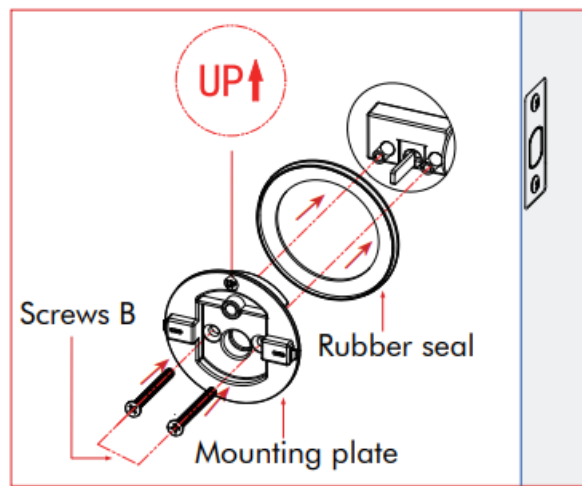
- Step 3 : Pocks prior pariginal door



- Step 4 : Uninstall your existing back panel as shown.



- Step 5: Install mounting plate and rubber seal from the inside of the door. Use the Screws B to secure the mounting plate to the Exterior panel.



IMPORTANT NOTE

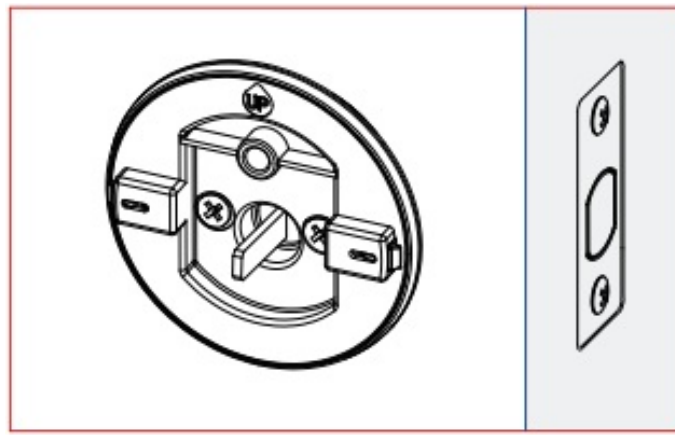
OUR SMART LOCK CAN WORK WITH YOUR EXISTING SINGLE-CYLINDER DEADBOLT ONLY YOU CHOOSE THE RIGHT ONE FROM OUR 8 ADAPTERS.



WHEN YOU FINISH INSTALLATION FOR THE MOUNTING PLATE AS BELOW:

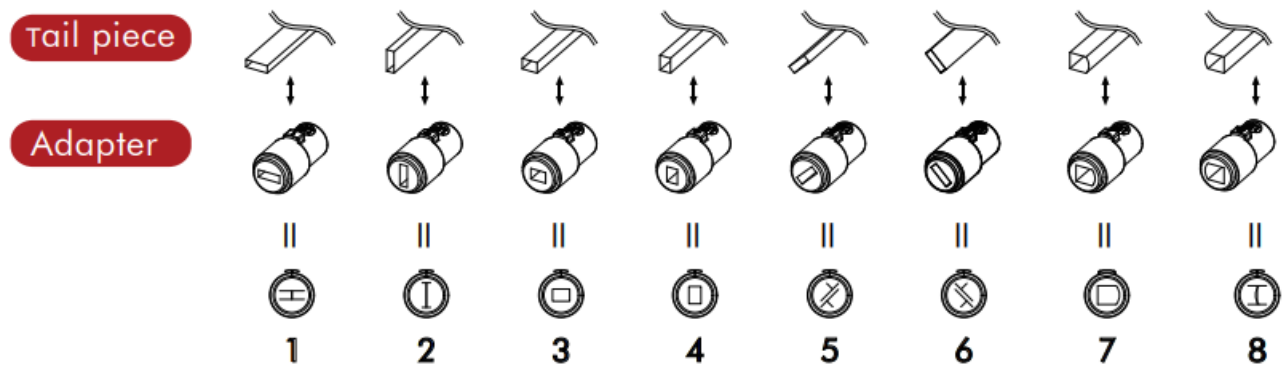
Very Important:

Please choose and install the right adapter when the deadbolt is retracted.



STEP1:

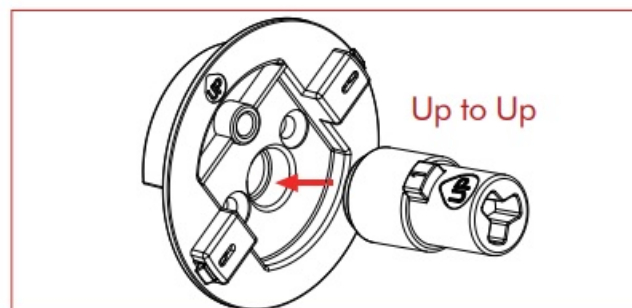
- Choose one from eight according to your existing tailpiece shape.
- Once you've found the right type, insert it on the mount.

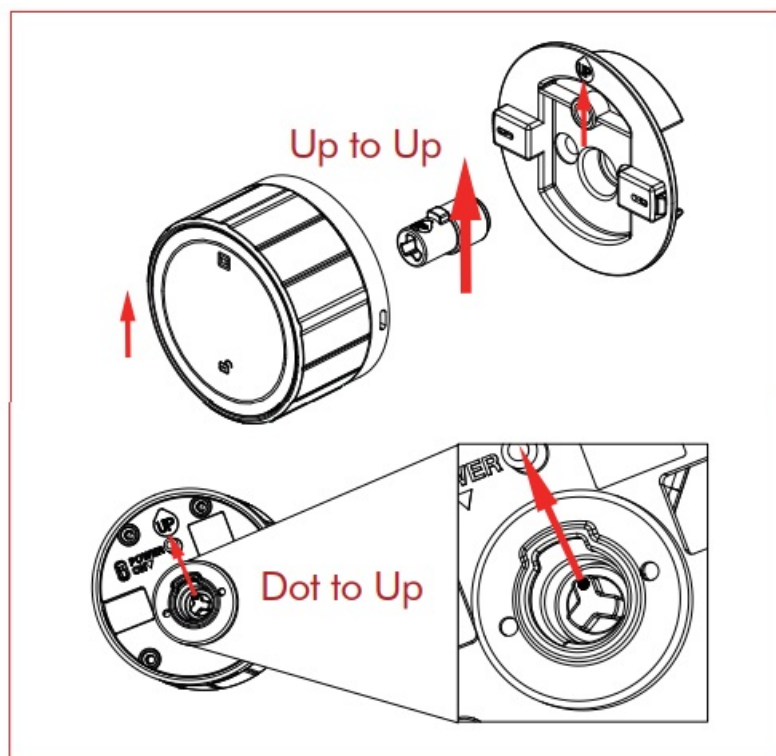


Important: Connect Marching adapter with tailpiece

STEP2:

Make sure the knob panel, adapter, and mounting plate have the (Up)mark aligned together and all facing upward position.

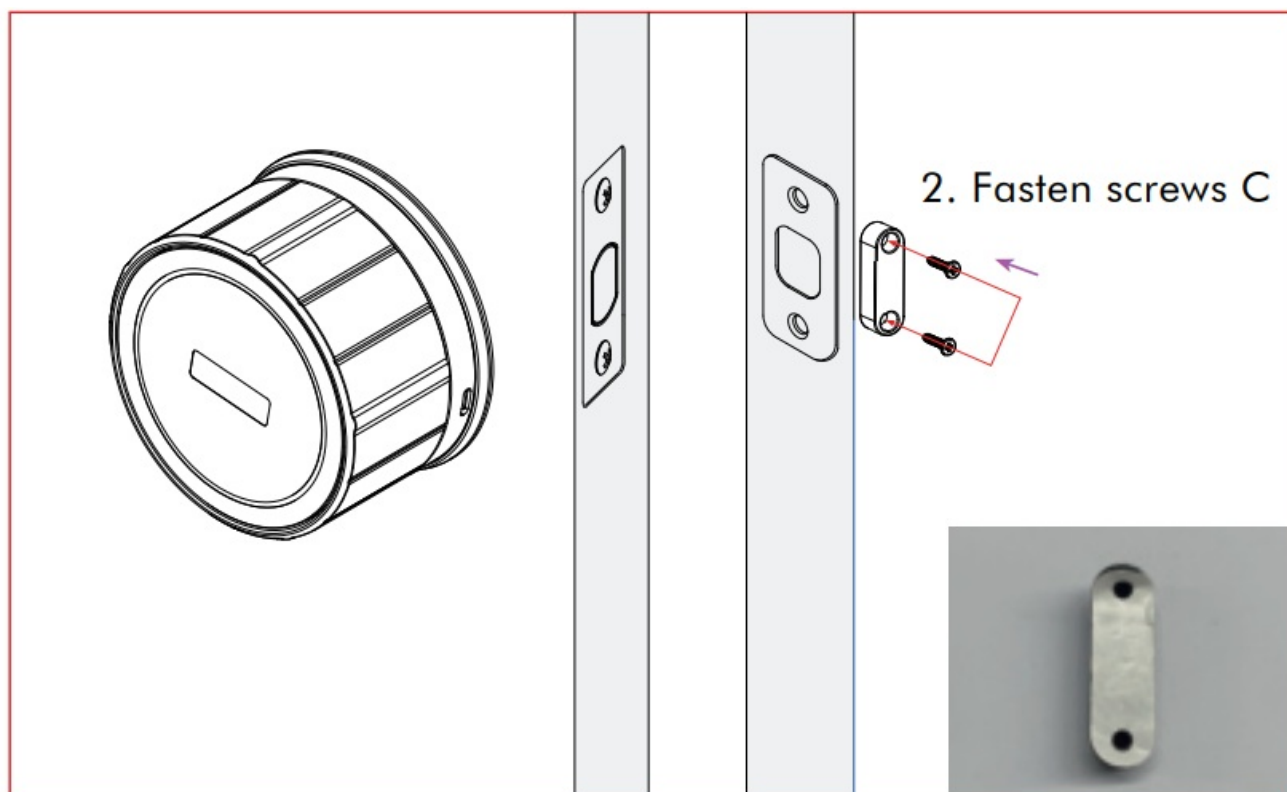




INSTALL SENSOR

1. Tear white tape, then attach the sensor to the inside of door frame.

Note: Keep the sensor level with the knob panel.



DOWNLOAD THE GEEKSMART APP



1. App Download Instructions

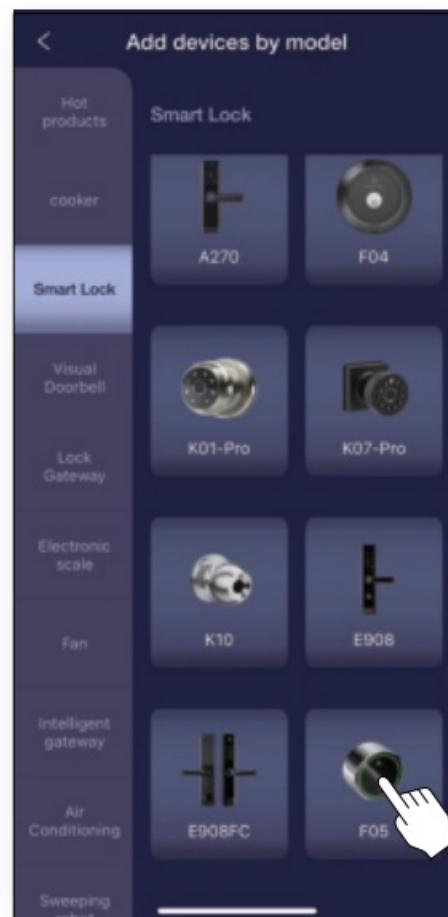
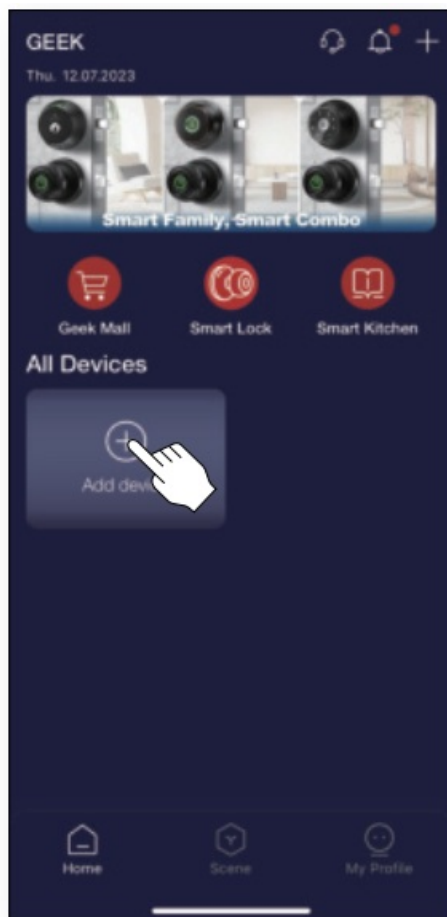
- Scan the QR code on the right you can use Android and iOS to download the APP.
- Android version software can be downloaded from the Google Play store. Search “GeekSmart”.
- iOS version of the software can be downloaded from the iPhone App Store. Search “GeekSmart”.

2. Register and log in with your E-mail address.

ADDING DEVICE

1. Adding new door lock by app

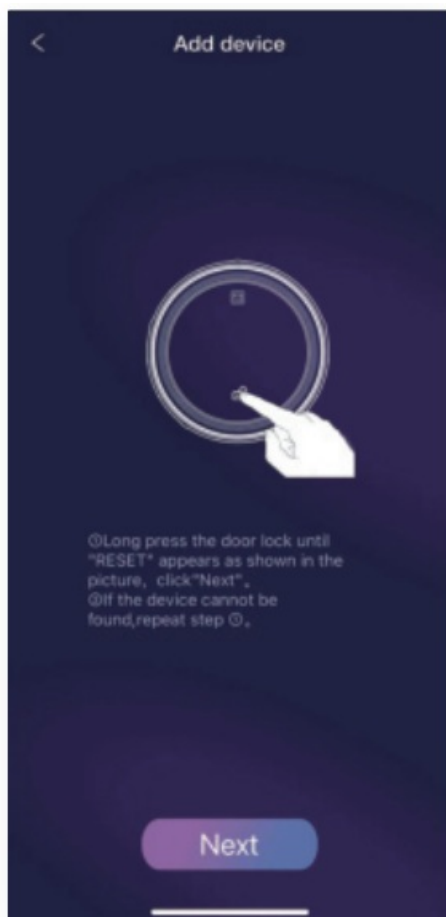
(Note: Keep your phone close by the door during this process).



1. Tap the add button”+”.

2. Select the smart lock.

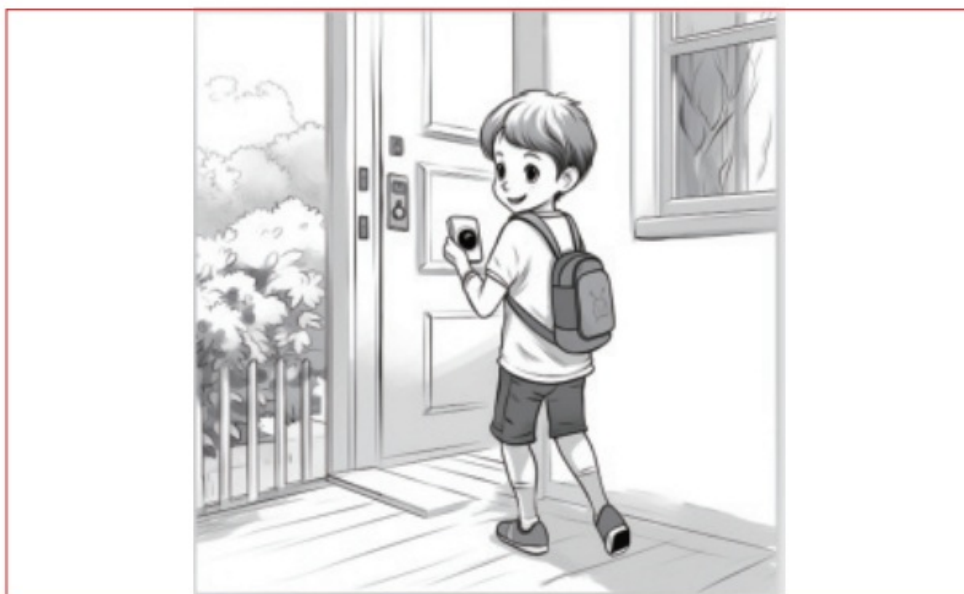
After adding the device(as 3) , you will see the F05 main page.



Select your lock.

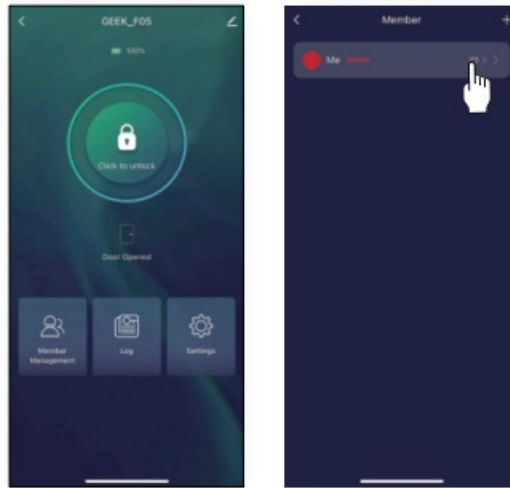
HOW TO ADD YOUR PHONE BLE TO PKES

PKES (PASSIVE KEYLESS ENTRY SYSTEM by BLE) After adding your phone BLE to our lock's PKES, every time you come home, you just need to bring your phone with a Bluetooth connection near the door lock, and the lock will automatically unlock.\



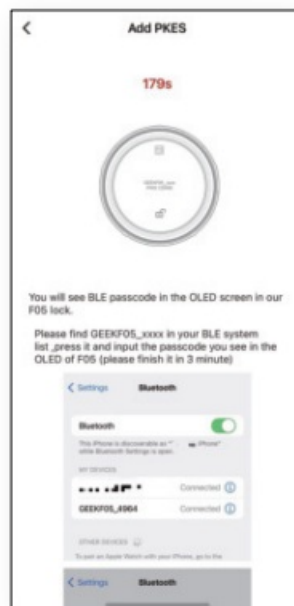
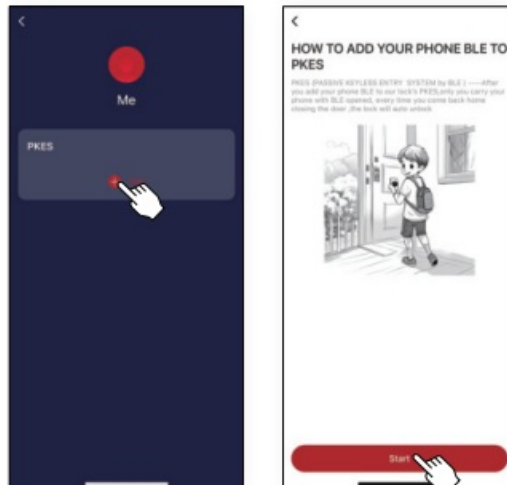
HOW TO ADD PKES

1.



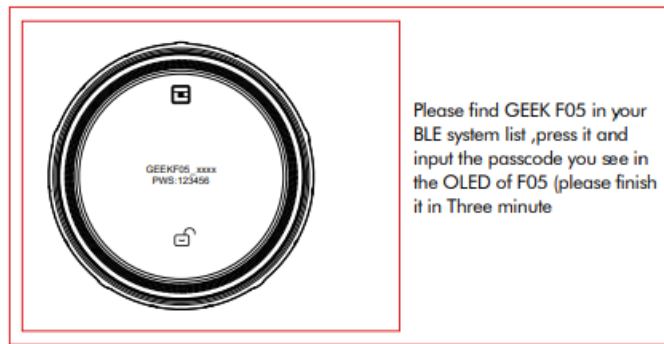
Click member mangement

2. Continue to follow the instructions on the App interface.
3. Click me.

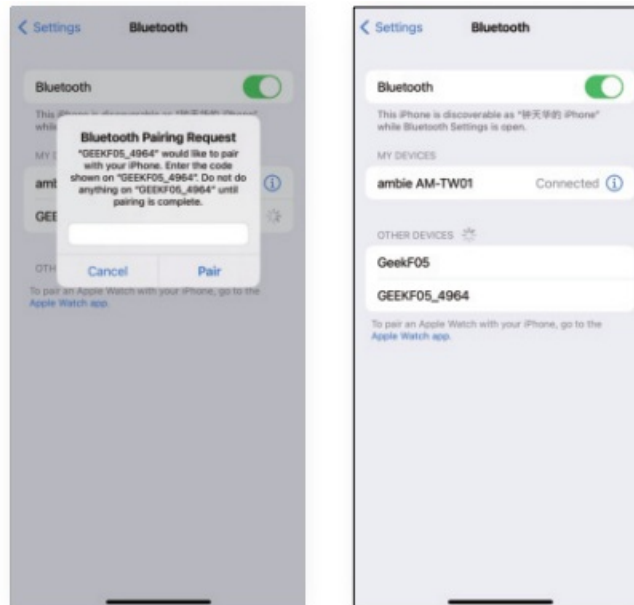


Please operate according to the instructions on the APP page.

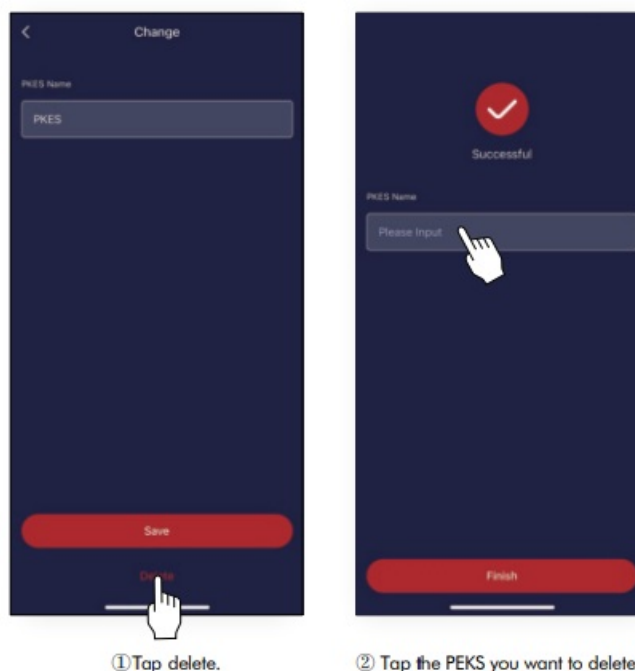
YOU WILL SEE THE BLE PASSCODE ON THE OLED SCREEN IN OUR F05 LOCK.



YOU WILL SEE BLE PASSCODE ON THE OLED SCREEN IN OUR F05 LOCK.





HOW TO DELETE PHONE'S BLE FROM PKES



WHAT IS SECURITY MODE? HOW TO ENTER SECURITY MODE ?



When you don't want anybody but you can unlock, you need to get your lock entered into security mode which only the admin's account can unlock over BLE (or the admin's first PKES user). Two ways to enter security mode

1. long press the unlock button “

2. Use the GEEK APP to enter security mode as below.



TWO WAYS TO CANCEL THE SECURITY MODE

1. Short press the the unlock button *



WHAT IS THE FUNCTION FOR UNLOCK BUTTON ON THE TOUCH SCREEN

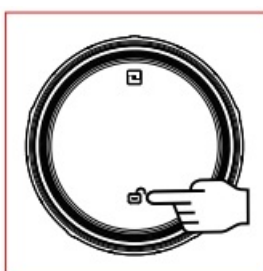
- Short press the the unlock button “

The subsequent adding operation is the same as using the GEEK APP.

- long press the unlock button “🔓” * ten seconds until you see the RESET, then release, the lock will be reset.



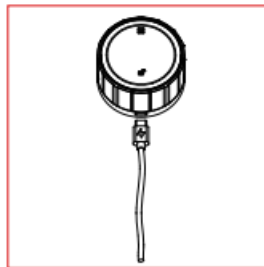
TROUBLESHOOTING



- Q: How to reset the F05?
- A: Please select 'restore factory setting" or "Delete device" by GeekSmart APP.
- A: Long press the knob panel as shown. Release your finger until "RESET" is displayed. When the Reset SUCCESS message is displayed, the device initialization is successful.
- Q: Does F05 work with third-party accessories such as deadbolt latch?
- A: It is recommended to use the original accessories for best performance and stability.
- Q: What notification will I receive when the battery is low?
- A: When you unlock the device through the mobile App, you will receive a push notification message with a low

battery warning.

- A: The remaining power can provide about 50 times to unlock. Please replace the battery in time.
- Q: How to charge F05?
- A: On the knob panel, connect a power bank with a type-C cable to activate for charging.
- Q: Why F05 doesn't lock or unlock?
- A: Check for low batteries.
- A: Try to see if you can manually lock the door. (to see if you install the lock correctly).
- A: Please check whether Bluetooth is enabled on your mobile phone.
- Q: IF I lose my door sensor, what to do?
- A: If you lose the door sensor, you will be unable to automatically close the door, and due to the PKES feature, F05 may continuously unlock. In this case, please remove the knob panel, push the power button upwards, reinstall the door, and temporarily use a
- key to open the door until you receive a new door sensor from us.



- Q: Why did the lock sound didi but not unlock?
- A: Check if the lock enters the security mode, if the lock enters security mode, other users not admin come near the door, the lock will sound didi but not unlock. If you want to cancel the security mode, only press the unlock button on the touch screen of the internal panel '🔓'.
- Q: I go near the door, but the lock can not be unlocked by KPES, why?
- A: Please make sure that your phone has Bluetooth enabled. If Bluetooth is enabled, please note the following:
- A. 1 The signal of PKES may be weak when your phone is in sleep mode. Simply turn on the screen of your phone to open the door with PKES.
- A.2 If the Bluetooth connection is lost, immediately go to your phone's Bluetooth settings, click on "GEEKF05" to reconnect, and then you can open the door.
- Q: What is wandering mode? How to cancel it?
- A: When you wander or play in the front garden of your house with your phone, the door lock still detects the PKES signal from your phone. However, the system considers that you are not immediately going to open the door, so it blacklists your phone's Bluetooth for PKES. Therefore, the next time you approach the door lock and try to open it with PKES as usual, the door lock remains locked. In this case, you need to use the GEEK APP to open the door via Bluetooth.
- Q: How to cancel the wandering mode?
- A: You just need to open the door lock from behind the door, walk out and close the door, and the door lock detects that you have left home. Within 30 seconds, the wandering mode will automatically be cancelled."

FCC statement

FCC WARNING

This device complies with Part 15 of the FCC Rules. Operation is subject to the following two conditions:

1. This device may not cause harmful interference.
2. This device must accept any interference received, including interference that may cause undesired operation.
Changes or modifications not expressly approved by the party responsible for compliance could void the user's authority to operate the equipment.

Note: This equipment has been tested and found to comply with the limits for a class B digital device, pursuant to Part 15 of the FCC Rules. These limits are designed to provide reasonable protection against harmful interference in a residential installation.

This equipment generates uses and can radiate radio frequency energy and, if no installed and used in accordance with the instructions, may cause harmful interference to radio communications. However, there is no guarantee that interference will not occur in a particular installation. If this equipment does cause harmful interference to radio or television reception, which can be determined by turning the equipment off and on, the user is encouraged to try to correct the interference by one or more of the following measures:

- Reorient or relocate the receiving antenna.
- Increase the separation between the equipment and the receiver.
- Connect the equipment to an outlet on a circuit different from that to which the receiver is connected.
- Consult the dealer or an experienced radio/TV technician for help.

The device has been evaluated to meet general RF exposure requirements. This equipment should be installed and operated with a minimum distance of 20 cm between the radiator and your body.

SPECIFICATIONS

Technical Parameters		
No.	Name	Parameter Description
1	USB	Type-C/ 5V2A
2	Waterproof	IP54
3	Low power warning	3.55V
4	Voltage range	3.55-4.2V
5	Stand-by current	Without connect to APP 60uA Connect to APP 75uA
6	Working current	MAX 300MA
7	Unlock time	≈ 1.5 sec
8	Range of working Temperature	-4°F~131°F
9	Door thickness	1 1/2"~2 1/8" (38-55mm)
10	Material	Aluminum alloy
11	Power	Lithium battery



[Geek F05 Keyless Entry Smart Lock](#) [pdf] User Manual

F05, F05 Keyless Entry Smart Lock, Keyless Entry Smart Lock, Entry Smart Lock, Smart Lock, Lock

References

- [🏠 Home](#)
- [User Manual](#)

[Manuals+.](#) [Privacy Policy](#)

This website is an independent publication and is neither affiliated with nor endorsed by any of the trademark owners. The "Bluetooth®" word mark and logos are registered trademarks owned by Bluetooth SIG, Inc. The "Wi-Fi®" word mark and logos are registered trademarks owned by the Wi-Fi Alliance. Any use of these marks on this website does not imply any affiliation with or endorsement.