



GEEK F02 Fingerprint and Touch Panel Smart Door Lock User Manual

[Home](#) » [GEEK](#) » GEEK F02 Fingerprint and Touch Panel Smart Door Lock User Manual 

GEEK F02 Fingerprint and Touch Panel Smart Door Lock User Manual



Contents

- 1 Welcome
- 2 PRODUCT DESCRIPTION
- 3 INCLUDED IN THE BOX
- 4 ASSEMBLY DIAGRAM
- 5 CHECK THE DOOR'S DIMENSIONS
- 6 INSTALLING LATCH AND STRIKE PLATE
- 7 INSTALLING EXTERIOR PANEL
- 8 INSTALLING BATTERIES
- 9 DOWNLOAD THE GEEKSMART APP
- 10 ADDING DEVICE
- 11 HOW TO SET UP THE DOOR OPENING DIRECTION IN APP
- 12 HOW TO ADD PASSCODE OR FINGERPRINT
- 13 TROUBLESHOOTING
- 14 Q : How to reset the F02?
- 15 Q : Dose F02 work with third-party accessories such as deadbolt latch?
- 16 Q : What notification will I receive when the battery is low?
- 17 Q : How can I unlock F02 if battery runs out?
- 18 Q : Why F02 doesn't lock or unlock?
- 19 Q : Speaker does not make noise when unlocking and locking although Smart lock has power
- 20 Q : My smart lock doesn't respond. It is not powering and the front light doesn't flash. In this case, the device can't connect to any smartphone
- 21 Q : How to enable or disable the security mode?
 - 21.1 FCC WARNING
 - 21.2 SPECIFICATIONS
 - 21.3 LIMITED WARRANTY
 - 21.4 Documents / Resources
 - 21.5 Related Posts

Welcome

Geek bids you welcome to a world of smart home devices, smart locks, and smart surveillance. We at strive to explore and develop the smart home industry for the good of all.

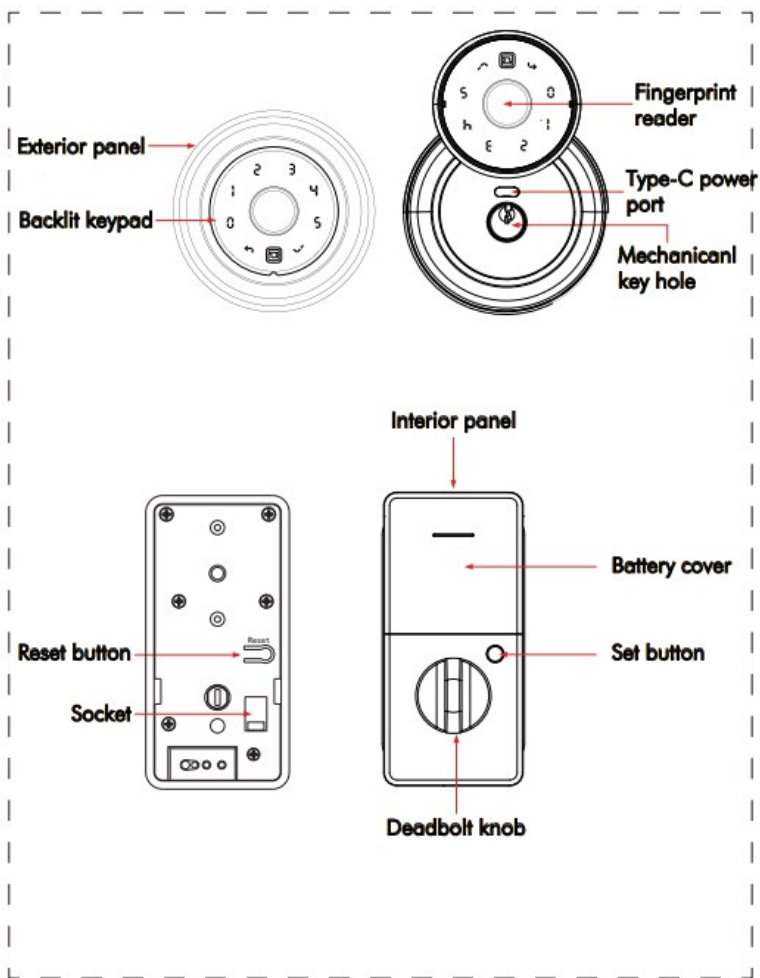
We use cutting-edge technologies to develop products fit and ready for the market.

Please visit our website www.geektechnology.com.



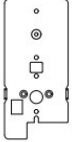

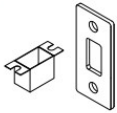




Before installing, please scan the QR codes to watch our easy step-by- step installation video.

If you have questions regarding the installation process, please contact us by mail info@geektechnology.com or by phone 1-844-801-8880

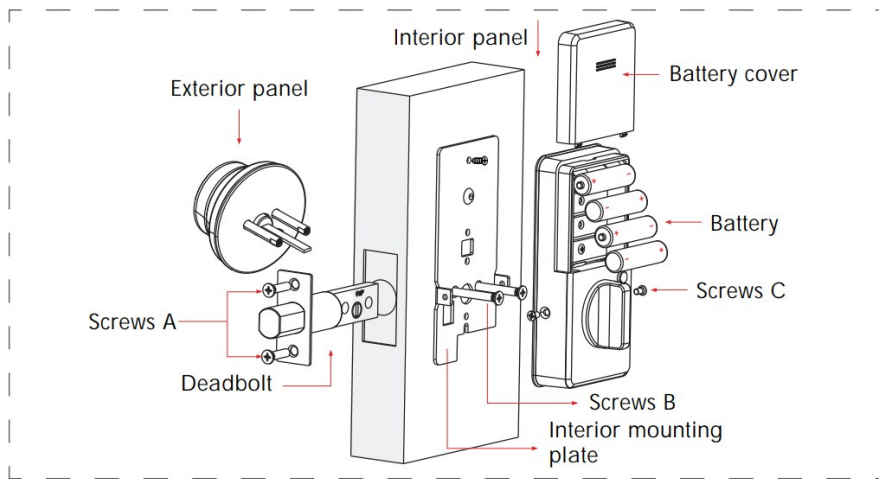
PRODUCT DESCRIPTION



INCLUDED IN THE BOX

| | | | | |
|--|--|---|--|---|
| <p>A</p>  <p>Exterior panel 1PC</p> | <p>B</p>  <p>Interior panel 1PC</p> | <p>C</p>  <p>Interior mounting plate 1PC</p> | <p>D</p>  <p>Deadbolt 1PC</p> | <p>E</p>  <p>Strike plate</p> |
| <p>F</p>  <p>Screws A 5PCS</p> | <p>G</p>  <p>Screws B 2PCS</p> | <p>H</p>  <p>Screws C 3PCS</p> | <p>I</p>  <p>Keys 2PCS</p> | |

ASSEMBLY DIAGRAM



CHECK THE DOOR'S DIMENSIONS

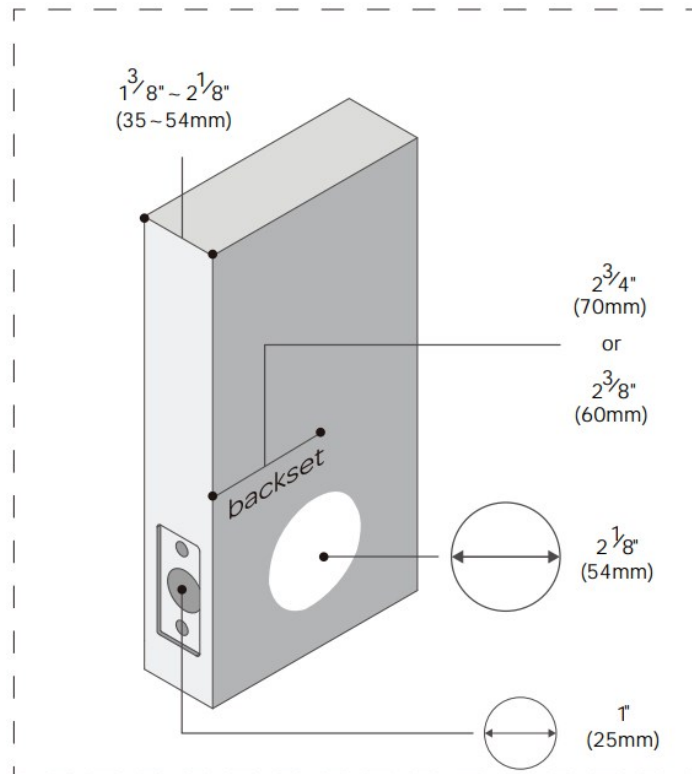
Step 1: Measure to confirm that the door is between (35mm ~54mm) thick.

Step 2: Measure to confirm that the hole in the door is (54mm).

Step 3: Measure to confirm that the backset is either – (60-70mm).

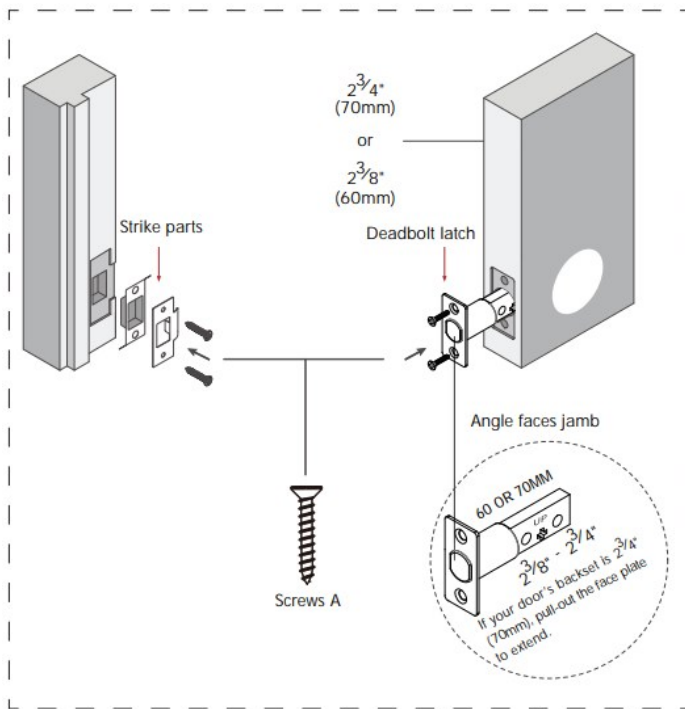
Step 4: Measure to confirm that the hole in the door edge is 1" (25 mm).

Note: If you have a new door, please drill the holes according to Drill Template



INSTALLING LATCH AND STRIKE PLATE

1. Install latch into the door.
2. Install the strike into the door frame, make sure the latch can go into the strike smoothly

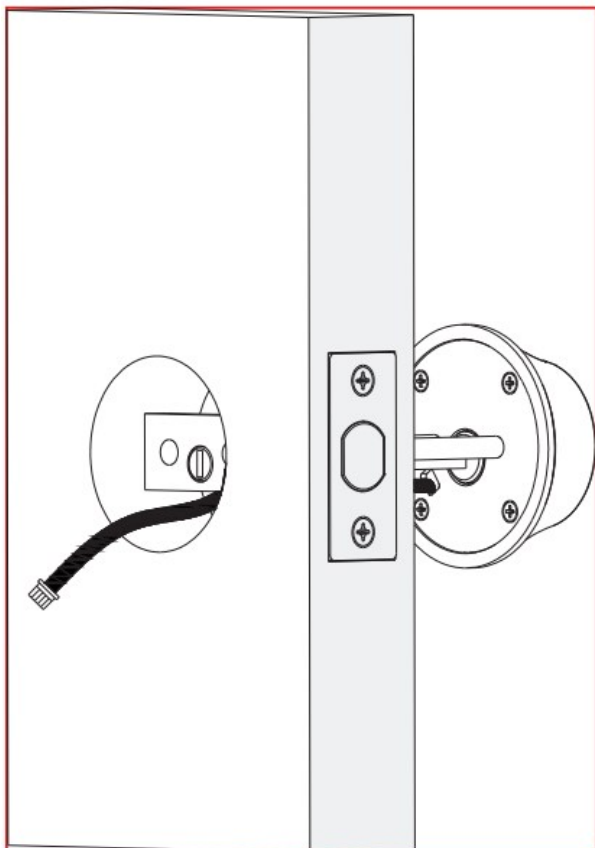


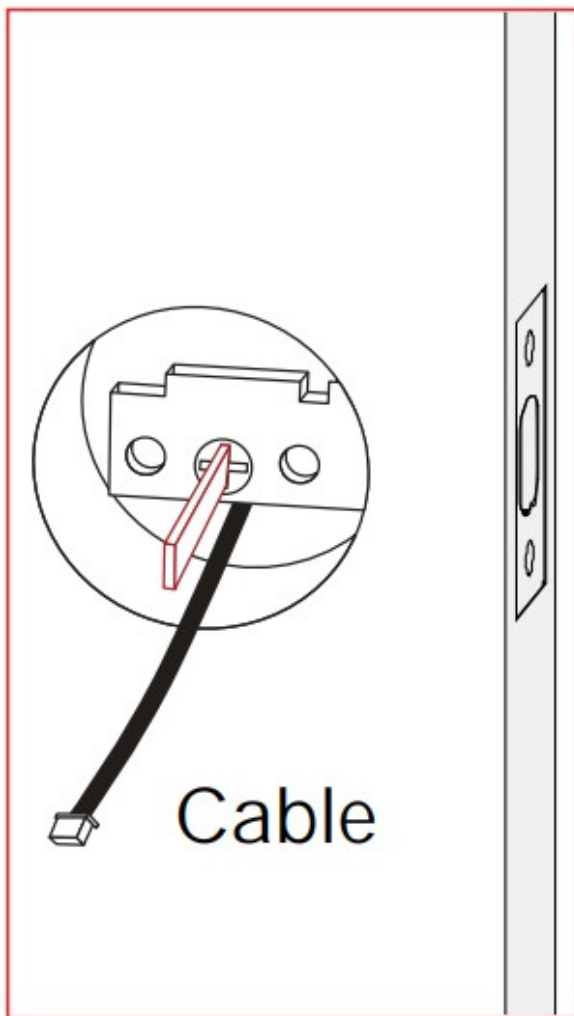
INSTALLING EXTERIOR PANEL

DO NOT CLOSE the door until you pair the lock with our Geek Smart App.

Step 1:

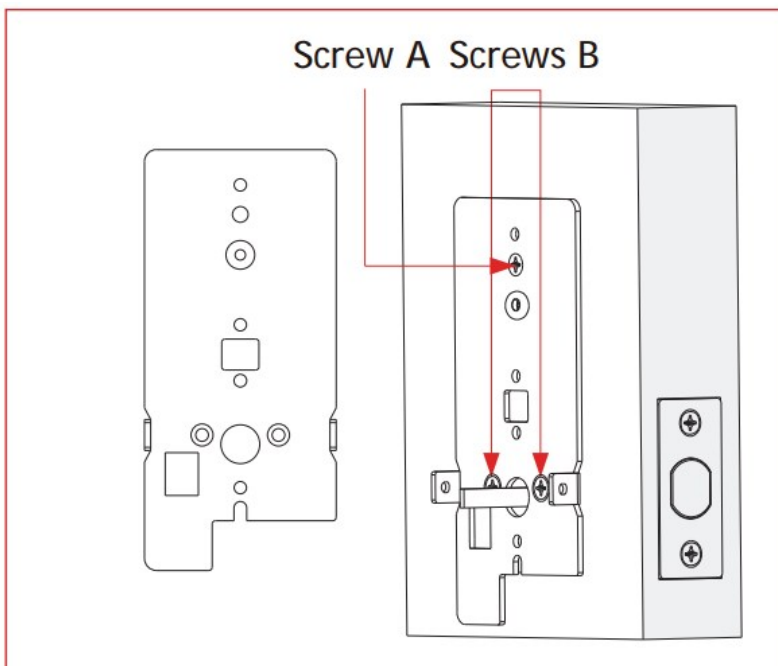
If the DEADBOLT latch is extended, please retract the latch with a flathead screwdriver before installation. Then insert the Standoff and spindle of the exterior panel into the corresponding holes of the DEADBOLT, pass the wires through the bottom of the **DEADBOLT**, and press the exterior panel tightly against the door





Step 2:

Install the interior mounting plate from the inside of the door. Make sure the connect cable is running through the small hole below spindle. Use the provided screws B to secure the mount plate to the exterior panel.

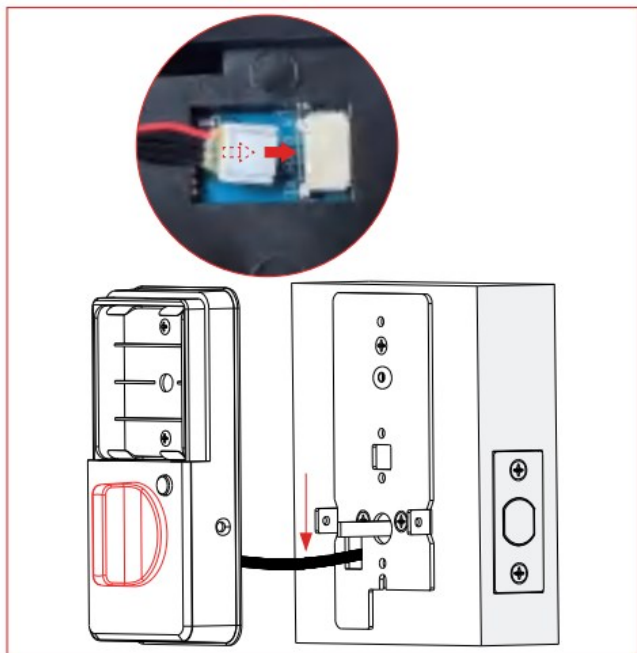


Very important

Step 3:

The Interior Panel Knob should be kept in a vertical position, see image on the left.

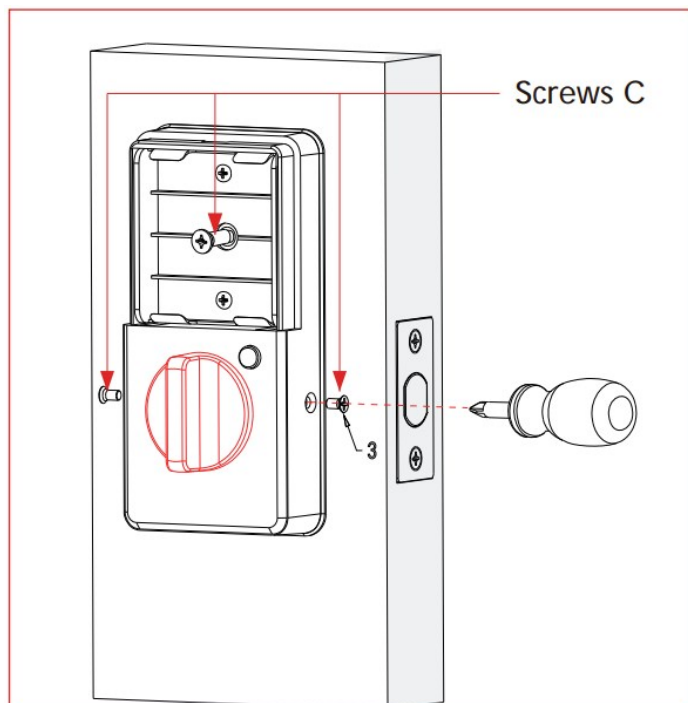
Insert the cable connector into the socket of the interior panel. Make sure the connector is firmly connected with the socket. Push the excess wire into the door, align the interior panel against the mounting plate



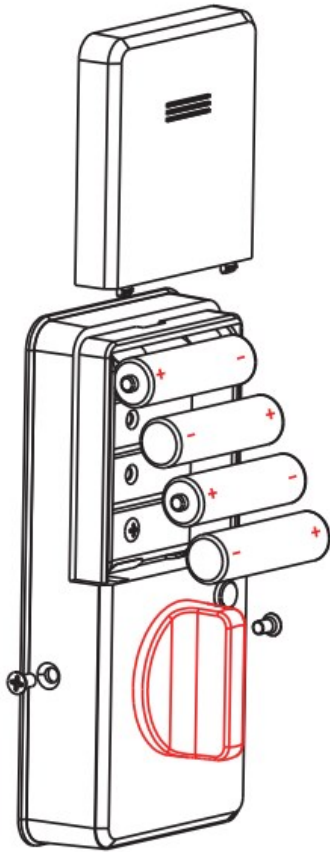
Step 4:

Use screw C provided and tighten the interior panel.

Note: Turn the interior panel knob to check if the deadbolt protrudes and retracts smoothly. Close the door to check if the deadbolt protrudes and retracts smoothly. If not, please review your installation or contact our support centre



INSTALLING BATTERIES



Insert 4 * AA batteries according to positive and negative polarity.

Do not use rechargeable batteries.

Do not use an electric drill to install the smart lock

DOWNLOAD THE GEEKSMART APP

1. App Download Instructions

- A. Scan the QR code on the right you can use Android and iOS to download the APP.
- B. Android version software can be downloaded in the Google Play store. Search “Geek Smart”.
- C. iOS version of the software can be downloaded in the iPhone App Store. Search “Geek Smart”.

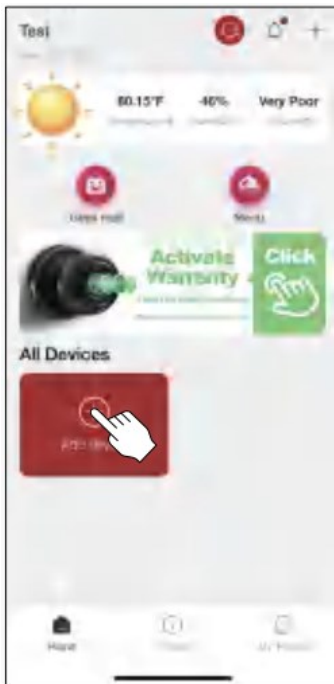
2. Register and log in with your E-mail address

ADDING DEVICE

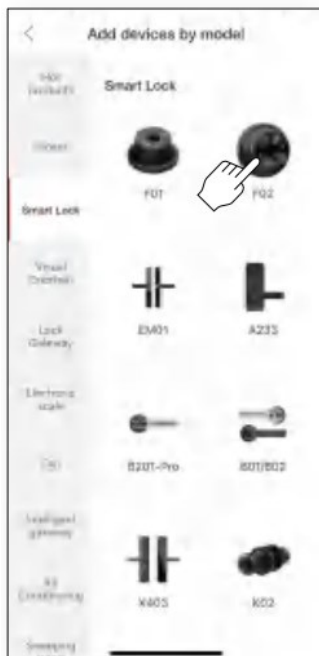
1. Adding new door lock by app

(**Note** : Keep your phone close by the door during this process).

- 1. Tap the add button “+”.



2. Select the smart loc

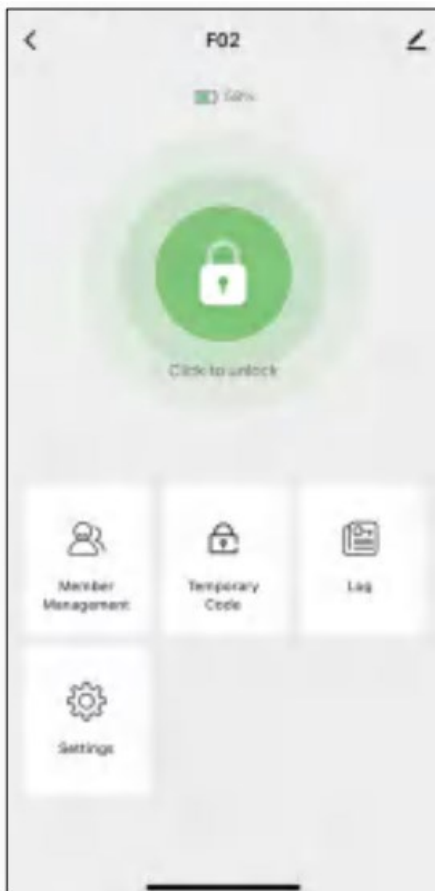


After adding the device(as ③) , you will see the F02 main page (as ④). At the same time the lock will identify left or right hinge door automatically, and the bolt will come out in 40 seconds, which means the lock system is well prepared.

3. Select your lock.



4. The door opening direction is automatically identified successfully

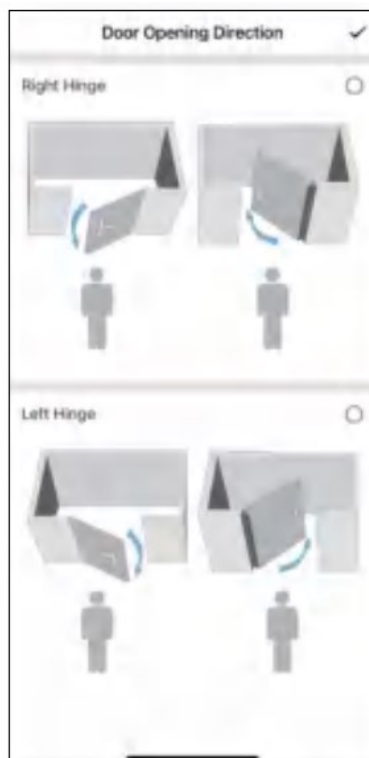
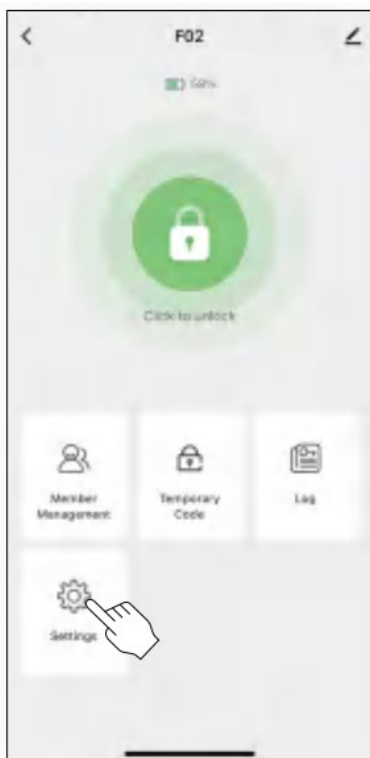


HOW TO SET UP THE DOOR OPENING DIRECTION IN APP

If the bolt doesn't come out in 40 seconds, that means the system fails to identify left or right hinge door.

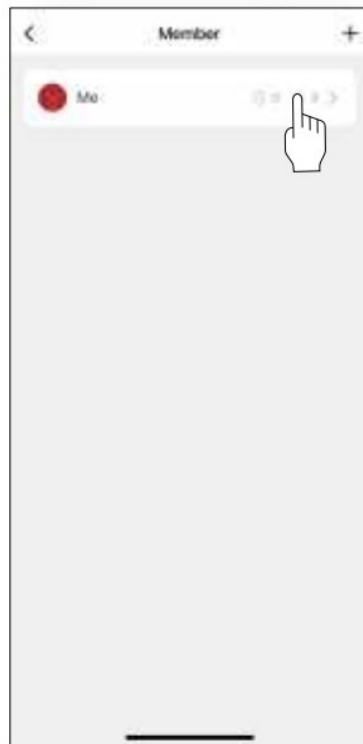
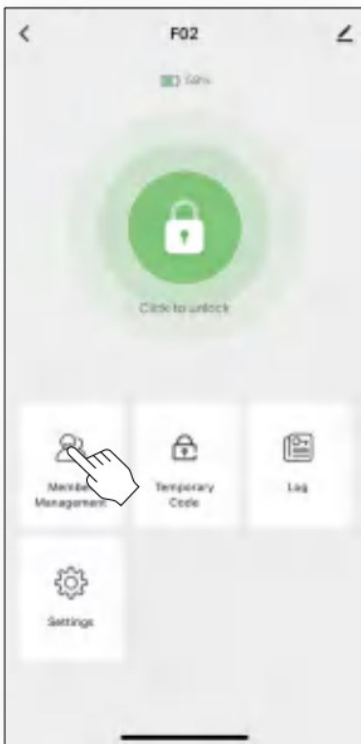
In this case, please follow the below instructions:

1. Please adjust the spindle and the Interior Panel Knob to a vertical position according to the user manual **(Part INSTALLING EXTERIOR PANEL and INSTALLING INTERIOR PANEL)**
2. Press “Settings” on the setting page, and click “Door Opening Direction” to choose Right Hinge or Left Hinge according to your door.

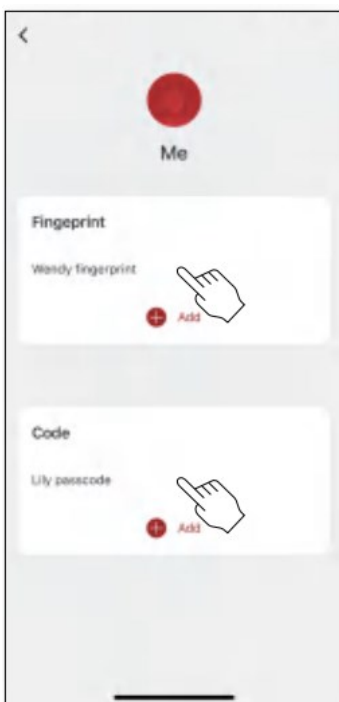


HOW TO ADD PASSCODE OR FINGERPRINT

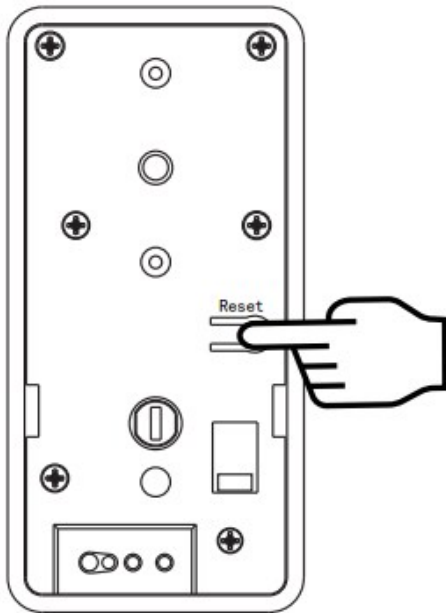
1. Click member mangement
2. Click me
3. Continue to follow the instruction on the App interface.



1. Tap the fingerprint you want to delete.
2. Tap delete



TROUBLESHOOTING



Q : How to reset the F02?

Q : Does F02 work with third-party accessories such as deadbolt latch?

A : It is recommended to use the original accessories for best performance and stability

Q : What notification will I receive when the battery is low?

A : After the fingerprint or passcode are successfully unlocked (the buzzer beeps once, the fingerprint reader flashes green and then flashes red). When you unlock the device through the mobile App, you will receive a push notification message with low battery warning

Q : How can I unlock F02 if battery runs out?

A : On exterior panel, connect a power bank to the deadbolt with type-C cable as to activate for emergency access

Q : Why F02 doesn't lock or unlock?

A : Check for low batteries. A : After completing the correct settings for left and right door opening, please DO NOT change the left and right opening settings again at will, otherwise it will cause the lock to freeze!!!

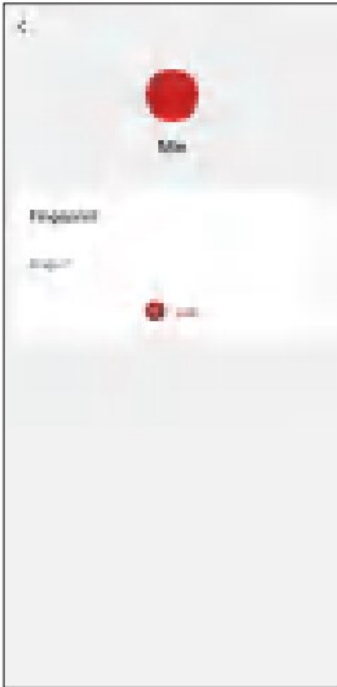
Q : Speaker does not make noise when unlocking and locking although Smart lock has power

A1 : Please check the GEEK APP in the setting to see if you have set to the mute mode. A2 : After A1 check, no setting problem, it is possible that the speaker is broken. Then you should contact us to replace the lock

Q : My smart lock doesn't respond. It is not powering and the front light doesn't flash. In this case, the device can't connect to any smartphone

A : The fast solution will be the replacement of the batteries. A : Re-connect the cable is also a good way to go.

Q : How to enable or disable the security mode?



FCC WARNING

Any Changes or modifications not expressly approved by the party responsible for compliance could void the user's authority to operate the equipment.

Note:

This equipment has been tested and found to comply with the limits for a Class B digital device, pursuant to part 15 of the FCC Rules. These limits are designed to provide reasonable protection against harmful interference in a residential installation. This equipment generates uses and can radiate radio frequency energy and, if not installed and used in accordance with the instruction, may cause harmful interference to radio communications. However, there is no guarantee that interference will not occur in a particular installation. If this equipment does cause harmful interference to radio or television reception, which can be determined by turning the equipment off and on, the user is encouraged to try to correct the interference by one or more of the following measures

- Reorient or relocate the receiving antenna.
- Increase the separation between the equipment and receiver
- Connect the equipment into an outlet on a circuit different from that to which the receiver is connected.
- Consult the dealer or an experienced radio/ TV technician for help

This device complies with part 15 of the FCC Rules.

Operation is subject to the following two conditions:

1. This device may not cause harmful interference, and
2. this device must accept any interference received, including interference that may cause undesired operation.

SPECIFICATIONS

Technical Parameters

| No | Name | Parameter Description |
|----|------------------------------|-------------------------|
| 1 | USB | Type-C/ 5V2A |
| 2 | Fingerprints max | 50 |
| 3 | Low power warning | 4.8V±0.2 |
| 4 | Voltage range | 4.5~6.5V |
| 5 | Stand-by current | 100uA |
| 6 | Working current | <250mA |
| 7 | Unlock time | ≈1.5 sec |
| 8 | Range of working Temperature | 23°F~131°F |
| 9 | Door thickness | 1 “~ (35-54mm |
| 10 | Material | Alluminum alloy |
| 11 | Power | 4*AA alkaline batteries |

LIMITED WARRANTY

Should your Geek Smart Lock prove to be defective in material or workmanship under normal use during the warranty period listed below, effective from the date of original consumer purchase of the product, we will replace the defective part(s). Replacement parts will meet intended fit and function of the original part. Replacement parts are warranted for the unexpired portion of the original warranty period. This limited warranty is good only to the original purchaser of the product and effective only when used in the United States of America

WARRANTY PERIOD

Electronic Parts: 12 months from Date of Purchase

Mechanical Parts: 36 months from Date of Purchase

This warranty applies to the original purchaser only, and only covers defects in workmanship experienced during operation of the product under normal service, maintenance, and usage conditions. This warranty applies to the purchase and use of this product in residential settings within the contiguous United States of America.

OBTAINING WARRANTY SERVICE

If you believe your product is defective, please send email to info@geektechnology.com or call 1-844-801-8880 to contact our customer support team for troubleshooting assistance and warranty service. You **MUST** have your original proof of purchase in order to obtain your warranty. **You may be required to provide your product model**

number or serial number upon request

THE FOLLOWING LIMITATIONS APPLY TO THE COVERAGE OF THIS WARRANTY. THIS WARRANTY DOES NOT COVER:

- Labor charges for installation, setup, or training to use the product.
- Shipping damage and any damaged caused by any other misuse, including abnormal service, handling, or usage.
- Cosmetic damage such as scratches and dents.
- Normal wear and tear on parts or replacement of parts designed to be replaced, e.g., cartridges, batteries.
- Service trips to deliver, pick-up, or repair; install the product; or to instruct in proper usage of the product.
- Damages or operating problems resulting from misuse, abuse, operation outside environmental specifications, uses contrary to instructions provided in the owner's manual, accidents, acts of God, vermin, fire, flood, improper installation, unauthorized service, maintenance negligence, unauthorized installation or modification, or commercial use.
- Labor, service, transportation, and shipping charges for the removal and replacement of defective parts, beyond the warranty period.
- Products that have been modified to perform outside of specifications without the prior written permission of manufacturer.
- Products lost in shipment, or theft.
- Damage from other than normal use.
- Damage to personal property from use of product.
- Any special or consequential damages arising out of the use of the product

THIS WARRANTY IS IN LIEU OF ANY OTHER WARRANTY, EXPRESS OR IMPLIED, INCLUDING WITHOUT LIMITATION, ANY WARRANTY OF MERCHANT ABILITY OR FITNESS FOR A PARTICULAR PURPOSE. TO THE EXTENT ANY IMPLIED WARRANTY IS REQUIRED BY LAW, IT IS LIMITED IN DURATION TO THE EXPRESS WARRANTY PERIOD ABOVE. NEITHER THE MANUFACTURER NOR ITS DISTRIBUTORS SHALL BE LIABLE FOR ANY INCIDENTAL, CONSEQUENTIAL, INDIRECT, SPECIAL, OR PUNITIVE DAMAGES OF ANY NATURE, INCLUDING WITHOUT LIMITATION, LOST REVENUES OR PROFITS, OR ANY OTHER DAMAGE WHETHER BASED IN CONTRACT, TORT, OR OTHERWISE. IN NO EVENT AND UNDER NO CIRCUMSTANCE OF ANY TYPE OR KIND SHALL THE SELLER, MANUFACTURER, AND/OR DISTRIBUTOR BE LIABLE FOR ANY REASON, UNDER ANY THEORY, FOR MORE THAN THE BASIC COST OF THE PRODUCT TO THE PURCHASER OR END USER. SOME STATES DO NOT ALLOW THE EXCLUSION OF INCIDENTAL OR CONSEQUENTIAL DAMAGES, SO THE ABOVE EXCLUSION MAY NOT APPLY TO YOU. THIS WARRANTY GIVES YOU SPECIFIC LEGAL RIGHTS. YOU MAY HAVE OTHER RIGHTS THAT VARY FROM STATE TO STATE.



Documents / Resources

| | |
|--|--|
| | <p>GEEK F02 Fingerprint and Touch Panel Smart Door Lock [pdf] User Manual F02BK, F02SN, F02 Fingerprint and Touch Panel Smart Door Lock, F02, Fingerprint and Touch Panel Smart Door Lock, and Touch Panel Smart Door Lock, Touch Panel Smart Door Lock, Sm art Door Lock, Door Lock, Lock</p> |
|--|--|