



Geek Chef O2 Smart Door Knobs Installation Guide

[Home](#) » [Geek Chef](#) » Geek Chef O2 Smart Door Knobs Installation Guide 

Contents

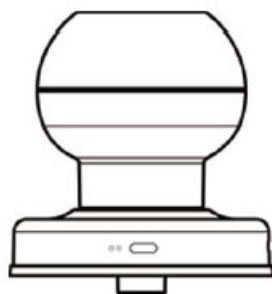
- [1 Geek Chef O2 Smart Door Knobs](#)
- [2 WHAT IS INCLUDED](#)
- [3 PRODUCT DIMENSIONS](#)
- [4 Open the emergency key port](#)
- [5 EXPLOSIVE VIEW](#)
- [6 ADJUST LATCH](#)
- [7 INSTALL LATCH](#)
- [8 ADDING DEVICE](#)
- [9 FUNCTION SETTINGS](#)
- [10 FCC](#)
- [11 Documents / Resources](#)
 - [11.1 References](#)
- [12 Related Posts](#)



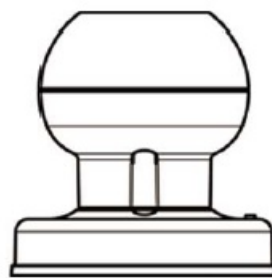
Geek Chef O2 Smart Door Knobs



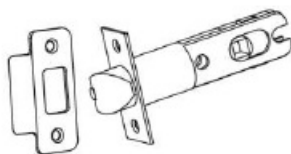
WHAT IS INCLUDED



Front Knob*1



Back Knob*1



Latch and strike*1



KEY*2



Standoffs*4

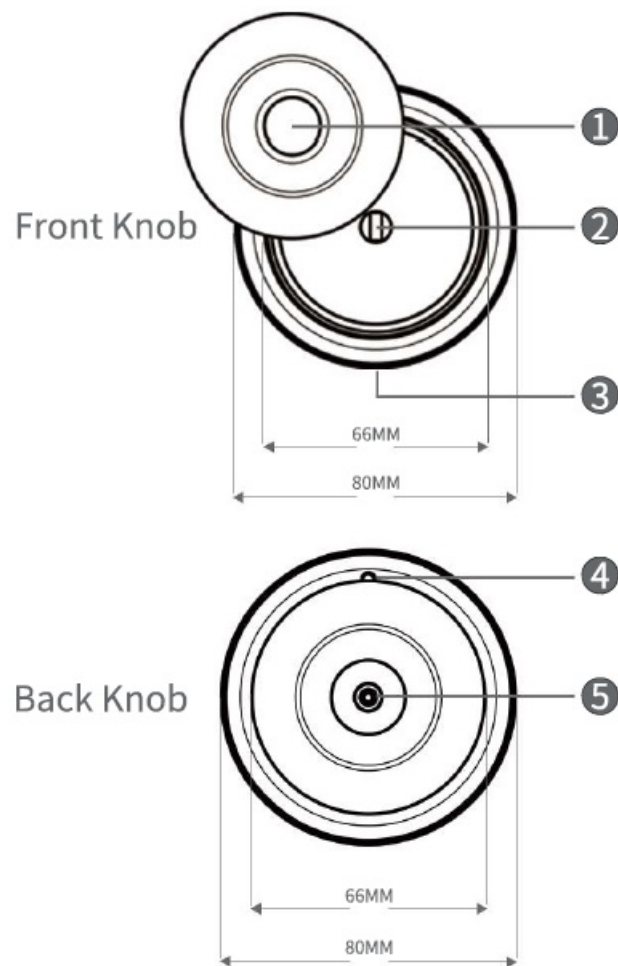


Screw A*4



Screw B*4

PRODUCT DIMENSIONS

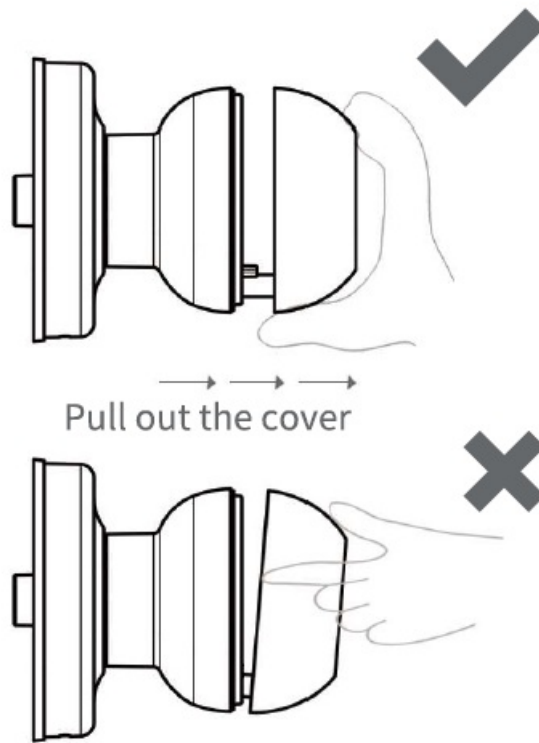


1. Fingerprint reader
2. Keyhole
3. Emergency port
4. Reset button
5. Battery cover

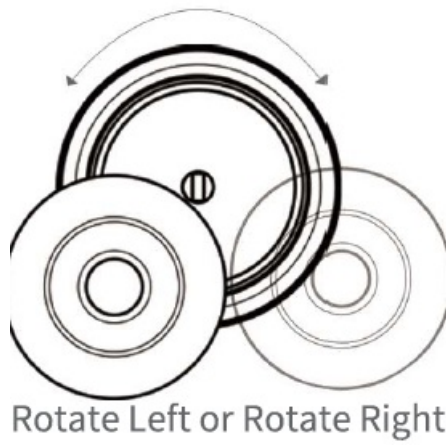
Tips: Green light means Unlock the door; Blue light means add fingerprint; red light means failed.

Open the emergency key port

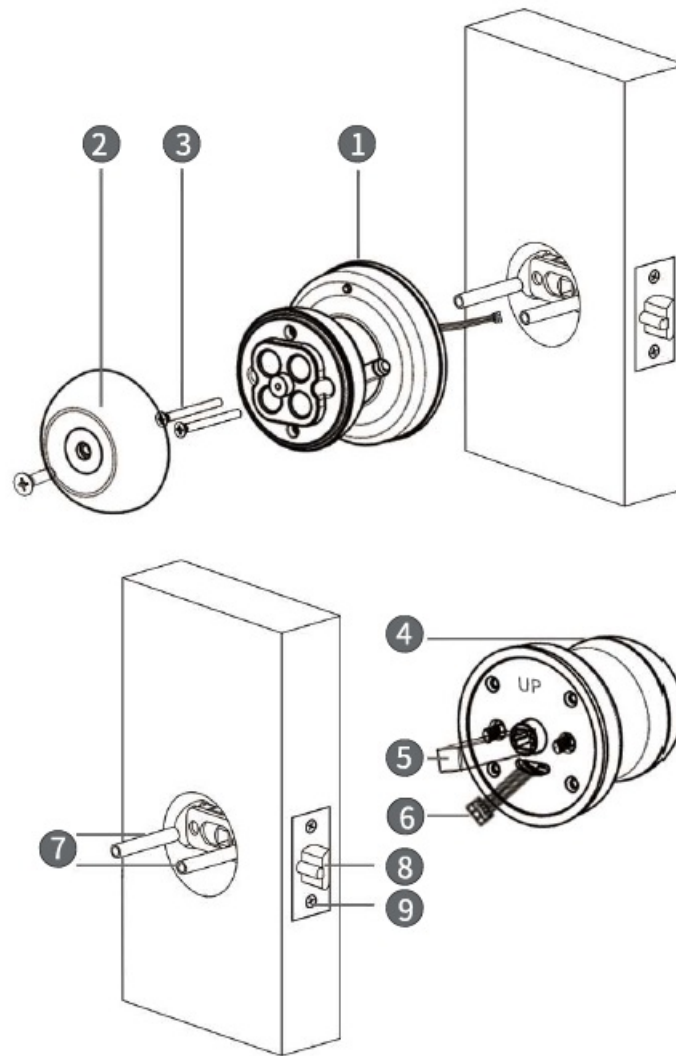
STEP 1



STEP 2

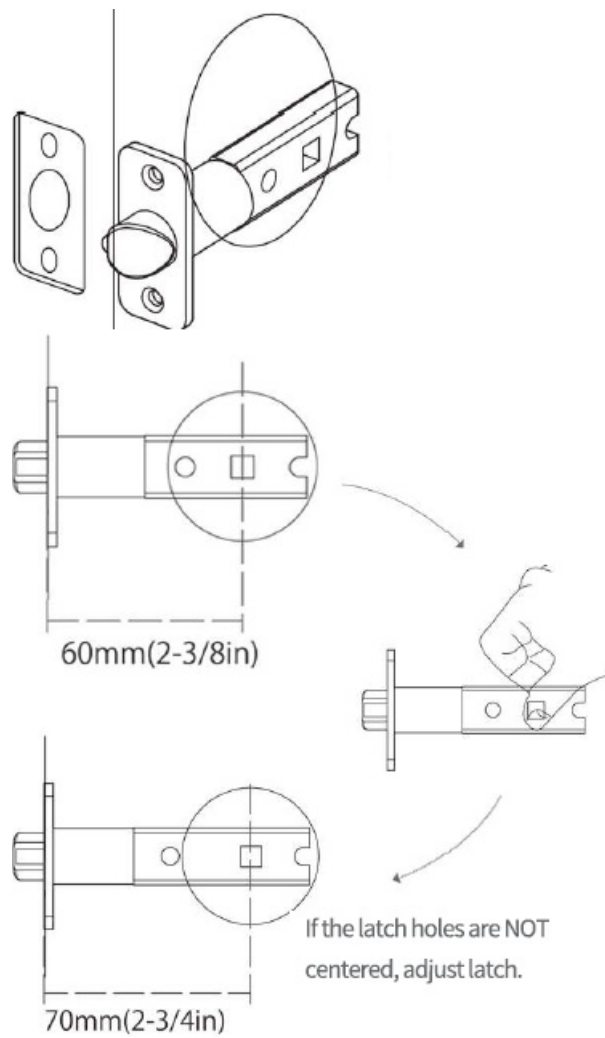


EXPLOSIVE VIEW



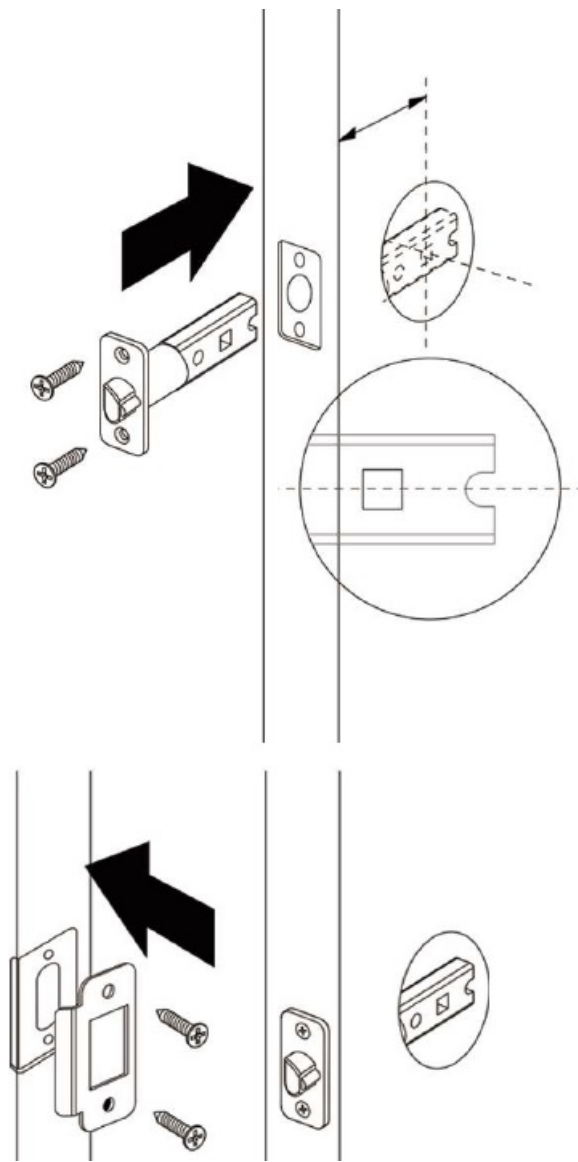
1. Back knob
2. Battery cover
3. Serew **A**
4. Front knob
5. Spindle
6. Cable
7. Bushings
8. Latch
9. Serew **B**

ADJEST LATCH



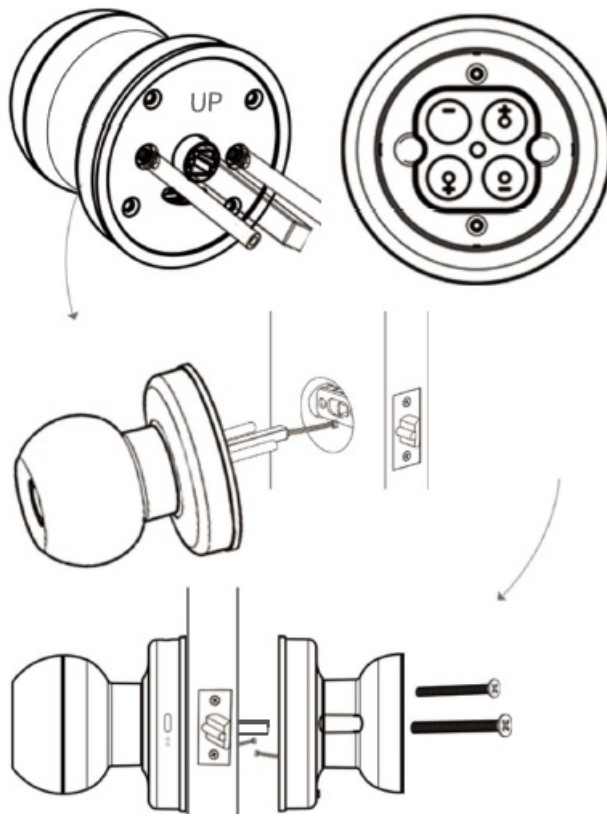
- Hold the latch in front of the door hole with the latch face flush against the door.
- If the latch holes are centered in the door hole, no adjustment is required.

INSTALL LATCH



Note: The square hole must be horizontal

INSTALLING KNOB

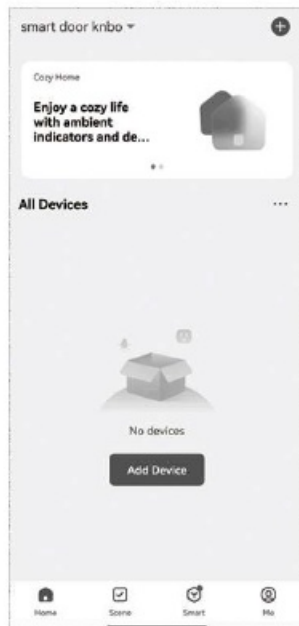


- Take the outside lever (lever with the touchpad). Screw 2 bushings onto the 2 threaded posts in the horizontal position (same orientation as the lever handle).
- Install the front panel on the door
- Connect the exterior knob and Interior knob wirings, and use crew B to Install the Interior Knob.
- installing 4* AAA alkaline batteries
- **Note:** DO NOT USE RECHARGEABLE BATTERIES

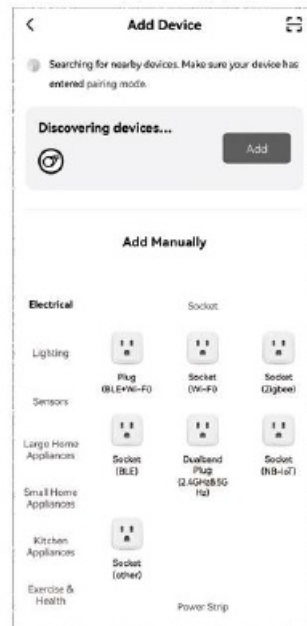
ADDING DEVICE

- Scan the QR code to download the Tuya app.



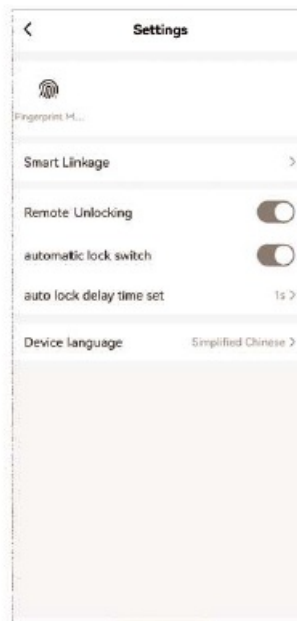
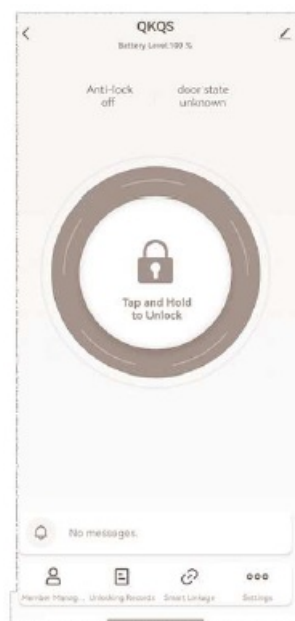


Top add device button

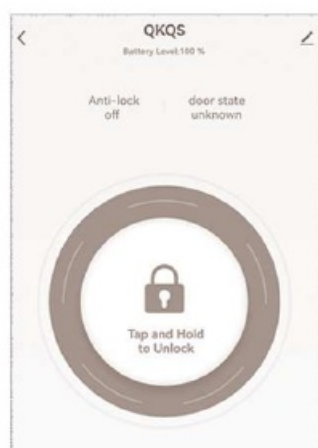


Top "Add" button

FUNCTION SETTINGS



RESTORE FACTORY SETTING



FCC

This device complies with part 15 of the FCC Rules. Operation is subject to the following two conditions:

1. This device may not cause harmful interference,
2. this device must accept any interference received, including interference that may cause undesired operation.


Any Changes or modifications not expressly approved by the party responsible for compliance could void the user's authority to operate the equipment.

Note: This equipment has been tested and found to comply with the limits for a Class B digital device, according to part 15 of the FCC Rules. These limits are designed to provide reasonable protection against harmful interference in a residential installation. This equipment generates uses and can radiate radio frequency energy and, if not installed and used under the instructions, may cause harmful interference to radio communications. However, there is no guarantee that interference will not occur in a particular installation. If this equipment does cause harmful interference to radio or television reception, which can be determined by turning the equipment off and on, the user is encouraged to try to correct the interference by one or more of the following measures:

- Reorient or relocate the receiving antenna.
- Increase the separation between the equipment and the receiver.
- Connect the equipment to an outlet on a circuit different from that to which the receiver is connected.
- Consult the dealer or an experienced radio/TV technician for help.

RF warning for Pooable devire: The device has; been evaluated to meet the general RF exposure requirements. The device can be used in portable exposure conditions without restriction

Documents / Resources

	Geek Chef O2 Smart Door Knobs [pdf] Installation Guide 2BDY6-O2, 2BDY6O2, O2, O2 Smart Door Knobs, Smart Door Knobs, Door Knobs, Knobs
---	---

References

- [User Manual](#)