



Geek Chef CJ-265E Espresso and Cappuccino Maker User Manual

[Home](#) » [Geek Chef](#) » Geek Chef CJ-265E Espresso and Cappuccino Maker User Manual

Contents [[hide](#)]

- 1 [Geek Chef CJ-265E Espresso and Cappuccino Maker Specification](#)
- 2 [IMPORTANT SAFETY INSTRUCTIONS](#)
- 3 [THIS LIMITED WARRANTY DOES NOT APPLY TO](#)
- 4 [LIMITED WARRANTY](#)
- 5 [Cleaning and Maintenance](#)
 - 5.1 [Descaling](#)
- 6 [How to use](#)
- 7 [Documents / Resources](#)
- 8 [Related Posts](#)



Geek Chef CJ-265E Espresso and Cappuccino Maker



Specification

- Model No.: CJ-265E
- Item No.: GCF20A
- Rated Voltage: 120V~60Hz
- Rated Power: 1300W
- Water tank capacity: 900ml
- Product Dimension: 256x193x283(mm) / 10.1x7.6x11.1(inch)

IMPORTANT SAFETY INSTRUCTIONS

1. Read all the safety and operating instructions carefully and retain them for future reference.
2. The appliance is designed exclusively for private use and for envisaged purposes. This appliance is not fit for commercial use.
3. Don't use it outdoors. Keep it away from sources of heat, direct sunlight, humidity (never dip it into any liquid) and sharp edges. Do not use the appliance with wet hands. If the appliance is humid or wet, unplug it immediately.
4. When cleaning or putting it away, switch off the appliance and always pull out the plug from the socket (pull the plug itself, not the lead) if the appliance is not being used and remove the attached accessories.
5. Do not operate the machine without supervision Never leave the operating machine unattended. If you leave the room you should always turn the device off. Remove the plug from the socket.
6. The device and the mains lead have to be regularly checked regularly for signs of damage. If damage is found the device must not be used.
7. Do not try to repair the appliance on your own. Always contact an authorized technician. To avoid the exposure to danger, always have faulty cable be replaced only by the manufacturer, by our customer service or by a qualified person and with a cable for the same type.

8. In order to ensure your children 's safety, please keep all packaging (plastic bags, boxes, polystyrene etc.) out of their reach.
9. This device is not intended to be used by individuals (including children) who have restricted physical, sensory or mental abilities and/or insufficient knowledge and/ or experience unless they are supervised by an individual who is responsible for their safety or and has received instructions on how to use the device. Children should be supervised at all times in order to ensure that they do not play with device.
10. Place the coffee machine on a firm and flat surface. Position it so that it cannot tip over.
11. Never apply accessory attachments that are not specified for this appliance.
12. Do not touch hot parts of the appliance.
13. 13. Do not place the device directly next to a gas or electric cooker or any other source of heat.
14. The water tank must only be filled with cold water!
15. The appliance is only to be used as described in the user manual.
16. Any other use is not intended and can result in damages or personal injuries.
17. The manufacturer assumes no liability for damages caused by improper use.
18. This appliance is not intended for use by persons(including children) with reduced physical, sensory or mental capabilities, or lack of experience and knowledge unless they have been given supervision or instruction concerning use of the appliance by a person responsible for their safety.
19. Children should be supervised to ensure that they do not play with the appliance.

THIS LIMITED WARRANTY DOES NOT APPLY TO

1. Failure of the product to perform during power failures and interruptions or inadequate electrical service
2. Damage caused by transportation or handling.
3. Damage caused to the product by accident, vermin, lightning, winds, fire, floods, or acts of God.
4. Damage resulting from accident, alteration, misuse, abuse, or improper installation, repair, or maintenance. Improper use includes using an external device that alters or converts the voltage or frequency of electricity
5. Any unauthorized product modification, repair by an unauthorized repair center, or use of non-approved replacement parts.
6. Abnormal cleaning and maintenance as described in the user's manual.
7. Use of accessories or components that are not compatible with this product.

The cost of repair or replacement under these excluded circumstances shall be borne by the consumer.

LIMITED WARRANTY

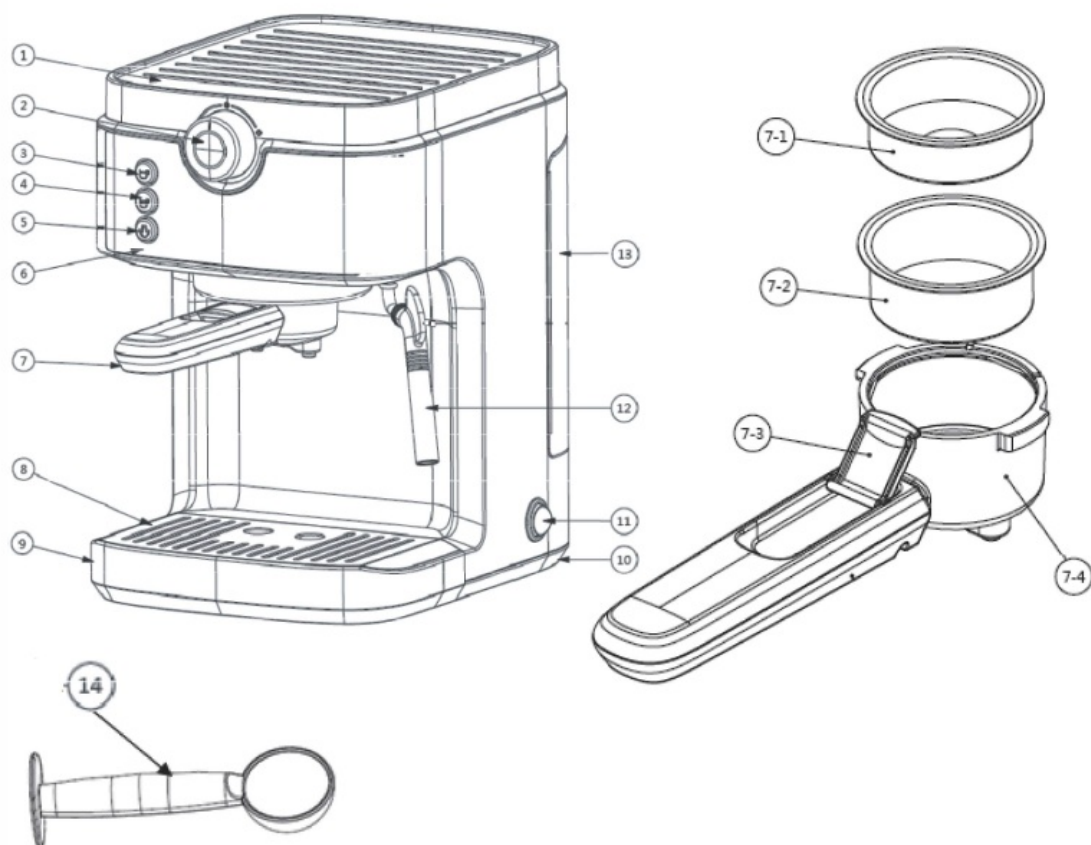
HOME EASY LTD warrants to the original consumer or purchaser this Geek Chef Espresso & Cappuccino Maker is free from defects in material or workmanship for a period of One (1) year from the date of purchase. If any such defect is discovered within the warranty period, HOME EASY LTD, at its discretion, will repair or replace the Product at no cost. This limited warranty is good only to the original purchaser of the product and effective only when used in United States.

For warranty or repair service: email info: hdteam@aminalife.com. Please have your Product's model number, your name, address, city, state, zip code and phone number ready.

NO OTHER WARRANTY IS APPLICABLE TO THIS PRODUCT. THIS WARRANTY IS IN LIEU OF ANY OTHER WARRANTY, EXPRESS OR IMPLIED. INCLUDING WITHOUT LIMITATION, ANY WARRANTY OF MERCHANTABILITY OR FITNESS FOR A PARTICULAR PURPOSE. TO THE EXTENT ANY IMPLIED WARRANTY IS REQUIRED BY LAW. IT IS LIMITED IN DURATION TO THE EXPRESS WARRANTY PERIOD ABOVE. NEITHER THE MANUFACTURER NOR ITS U.S.DISTRIBUTOR SHALL BE LIABLE FOR ANY

INCIDENTAL, CONSEQUENTIAL, INDIRECT, SPECIAL, OR PUNITIVE DAMAGES OF ANY NATURE. INCLUDING WITHOUT LIMITATION. LOST REVENUES OR PROFITS, OR ANY OTHER DAMAGE WHETHER BASED IN CONTRACT, TORT, OR OTHERWISE, SOME STATES AND/OR TERRITORIES DO NOT ALLOW THE EXCLUSION OR LIMITATION OF INCIDENTAL OR CONSEQUENTIAL DAMAGES OR LIMITATIONS ON HOW LONG AN IMPLIED WARRANTY LASTS. SO THE ABOVE EXCLUSION OR LIMITATION MAY NOT APPLY TO YOU. THIS WARRANTY GIVES YOU, THE ORIGINAL PURCHASER, SPECIFIC LEGAL RIGHTS AND YOU MAY ALSO HAVE OTHER RIGHTS THAT VARY FROM STATE TO STATE OR TERRITORY TO TERRITORY.

Unit drawings



1. Top cover
2. Rotating knob
3. Espresso button (single cup)
4. Espresso button (double cup)
5. Steam button
6. Front panel
7. Porta-filter: 7-1.single cup filter 7-2. Double cup filter 7-3.Retention clip 7-4. Filter holder
8. Drip tray grid
9. Drip tray
10. Bottom cover
11. On/off switch
12. Steam tube&nozzle
13. Water tank
14. Measure scoop

Cleaning and Maintenance

Basic Cleaning:

1. Disconnect the appliance from the mains and let it cool before cleaning it with damp cloth.
2. Do not let water or any other liquid get into the machine.
3. After washing, dry all parts before fitting them together and storage.
4. To clean the steam tube and nozzle after milk frothing, use a damp cloth to remove the steam nozzle cover and wash it by clean water.

Use the wet cloth to remove the milk residue on the steam tube after removing the steam nozzle cover. Repeat with steam function after cleaning is finished to make sure steam can come out from the nozzle.

In case no steam comes out, carefully use a needle to loosen the milk residue from the opening of the steam tube to remove the blockage. Rinse with clean water and dry it.

Descaling

STEP 1

Fill in the water tank with Detergent and water till Max mark.

Select any filter to put into the porta-filter. Position the porta-filter to the unit. Place a container right under the brewing outlet and the steam tube&nozzle.

1. Rotate the knob to the coffee position. Press the steam button for more than 5 seconds. The unit will start the descaling of the coffee brewing system for 5 minutes. During the descaling, the button lights of a single cup, double cup, and steam will flash once one by one. When the cycle is finished, the buttons of a single cup, double cup and steam will flash simultaneously.
2. Rotate the knob back to the steam position to start the descaling of the steam system. During the descaling, the button lights of a single cup, double cup, and steam will flash once one by one. The cycle will take 5 min and when it finishes, the lights of a single-cup button and double cup button will flash one by one, and the steam button light will be on. This means the descaling completes.

STEP 2

Pour out the mixture of detergent from the water tank. Add fresh water into the water tank to max mark, and put the water tank back to the unit.

1. Rotate the knob back to steam position, and press the steam button to start the steam system cleaning. The button lights of a single cup, double cup, and steam will flash twice one by one. The cycle will take 1 min. When it finishes, the button lights of a single cup, double cup and steam flash simultaneously.
2. Rotate the knob back to the coffee function to start again the cleaning of the coffee brewing system. The button lights of a single cup, double cup and steam will flash twice one by one. The cycle will take 1 min. When it finishes, the unit will enter pre-heating mode.

Volume Adjusting

Select any filter to put into the porta-filter. Position the porta-filter to the unit. Press any coffee button and keep pressing it down until desired volume is reached. Then release the selected button, the desired volume will be reached.

Notice:

Min. volume for a single cup and double cup is 25g

Max. volume for a single cup: 100g

Max. volume for the double cup: 200g

Reset to Default Setting

1. Plug the unit in.
2. Switch off the unit. Rotate the control knob to steam function.
3. Press down both single cup coffee button and steam button simultaneously. Switch on the unit at the same time.
4. The three function buttons will flash by turns.
5. The unit is now reset to the default setting.

How to use

1. Unpack the box with care, keeping all the packaging materials until satisfied everything is present and in working order.
2. Before using this product for the first time
 - It is advisable to test it only with water.
 - Clean the parts that will come into contact with food
3. Before connecting the machine, check that ON/OFF button is not pressed, and Rotating Control Knob is in central position O
 - It is advisable to test it only with water.
 - Clean the parts that will come into contact with food
4. Follow the below steps to fulfill the priming of unit when first starting:
 - Make sure that the water tank is filled with water to the Max mark. DO NOT overfill the Max mark.
 - Plugin and turn on the machine. The buttons on the control panel will flash red and blue by turns.
 - KEEP THE ROTATING KNOB IN THE MIDDLE POSITION. Don't rotate the knob.
 - Press any button, the unit will start pumping a small amount of water and exit to the drip tray. Wait till the water finishes, then the unit will enter to pre-heating mode.
 - The button will stop flashing when pre-heating is finished. Gently remove the drip tray and pour out the dispensed water. Now the unit is ready for use.

Above simple operation ensures optimum dispensing and must be carried out:

 - When first starting.
 - When the machine has been out of use for a long time (1 or 2 weeks).
 - When the tank has run out of water.

Espresso

Plug in. Switch on the unit.

Rotate the knob to the "O" position to start the preheating. The coffee and steam button will keep flashing during preheating. Lights will stop flashing and remain on steadily while finishing preheating

1. Fill water into the water tank till Max mark. Never overfill the Max mark.
2. Select the desired filter and insert it to the porta-filter. To remove the filter, we recommend to use the edge of one filter to pop out the other filter, for filter exchanging or cleaning.
3. Use the measuring scoop to measure the quantity of fine ground coffee powder to your desired filter. Evenly

press down the coffee powder into the filter with the flat end of the measuring scoop. Please keep the rim of the filter clean after each filling.

4. Insert the filter holder into the machine by holding the handle to the left and lifting up until it is seated in its groove. Then turn the handle to the right until it shifts into the lock position. keep the rim of the filter clean after each filling.
5. Place the cup onto the drip tray, and right under the coffee outlet.
Pre-heated cups will be recommended.
6. Rotate the knob to coffee position. Press down coffee button (single or double cup}. The button will start to flash. The unit will start the pre-brewing for 3 seconds, and then coffee brewing.
7. The unit will stop automatically when coffee brewing is finished. Coffee button will illuminate.
8. During coffee brewing, you can press the coffee button again to stop the operation if you like.
9. Rotate again the knob to the “O” position to enter Standby mode
10. Remove the porta-filter clockwise to detach.
11. Clean the porta-filter and dry it after use.
12. Now you can enjoy your delicious coffee!

TIPS: Rotate the knob to the “O” position after coffee brewing, will help to remove the porta-filter easily.

Remark: The unit will dispense a small amount of water to the drip tray, when the machine is finished the coffee brewing or steam making and the knob is rotated to middle position. This is normal.

Milk Frothing

1. Rotate the knob to the “O” position. Press down the steam button for pre-heating. The button will flash during preheating. The light will stop flashing and remain on steadily while finishing preheating
2. Fill in the tank with water between Min and Max.
3. Pour the desired amount of milk into the milk jug. Place the milk jug under the steam tube & nozzle.
IMPORTANT: The milk must be at refrigerator temperature(not hot!)
4. Dip the steam nozzle into the milk. Rotate the knob to the steam position. The steam button will illuminate. The unit will start making steam out of the steam tube&nozzle.
5. Rotate the milk jug with slow movements from the bottom upwards. Until your desired foaming is reached, rotate the knob back to the “O” position and your milk froth is ready with steam button light off, two coffee buttons light on.
6. Remove the milk jug away. Use a damp cloth to remove the milk residue on the steam tube&nozzle.

IMPORTANT:

- ALWAYS CLEAN THE STEAM TUBE&NOZZLE AFTER EACH USE
- THE STEAM TUBE&NOZZLE CAN BE HOT. TAKE IT WITH CARE WHEN REMOVED AND CLEAN.


Remark: The unit will dispense a small amount of water to the drip tray when the machine is in standby mode or preheating mode for a steam function, and the knob is rotated to the “O” position. This is normal.

Hot Water

1. Rotate the knob to steam position when unit is on Standby mode.

2. Place a cup right under the steam tube & nozzle
3. Press the small cup coffee button. The small cup coffee button will flash.
4. The unit will start making hot water from the steam tube & nozzle. When the desired water volume is reached, rotate the knob back to the “O” position to stop hot water making.
5. The unit will back to standby mode with coffee button light on.

Documents / Resources

	Geek Chef CJ-265E Espresso and Cappuccino Maker [pdf] User Manual CJ-265E, Espresso and Cappuccino Maker, CJ-265E Espresso and Cappuccino Maker, GCF20 A
---	---