

GECKO
GECKO in.touch 3
and 3 Plus 2 Wifi Kit
for Freeflow Spas



GECKO in.touch 3 and 3 Plus 2 Wifi Kit for Freeflow Spas User Guide

[Home](#) » [Gecko](#) » GECKO in.touch 3 and 3 Plus 2 Wifi Kit for Freeflow Spas User Guide 

Contents

- [1 GECKO in.touch 3 and 3 Plus 2 Wifi Kit for Freeflow Spas](#)
- [2 Troubleshooting](#)
- [3 FAQs](#)
- [4 Documents / Resources](#)
 - [4.1 References](#)
- [5 Related Posts](#)

GECKO

GECKO in.touch 3 and 3 Plus 2 Wifi Kit for Freeflow Spas



Specifications

- Model: in.touch 3 & 3+
- Product Type: Home Spa Control System
- Manufacturer: Gecko Alliance
- Address: 450 des Canetons, Quebec City, QC Canada G2E 5W6
- Contact: +1 800.78.GECKO, info@geckoal.com
- Website: www.geckoalliance.com

Product Usage Instructions

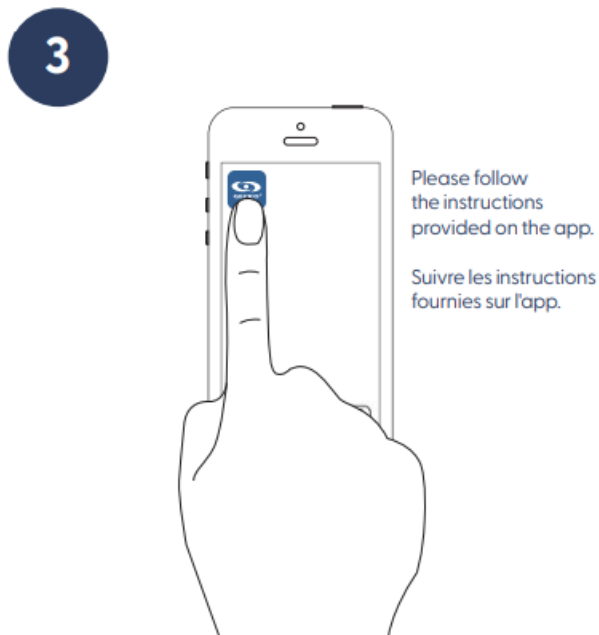
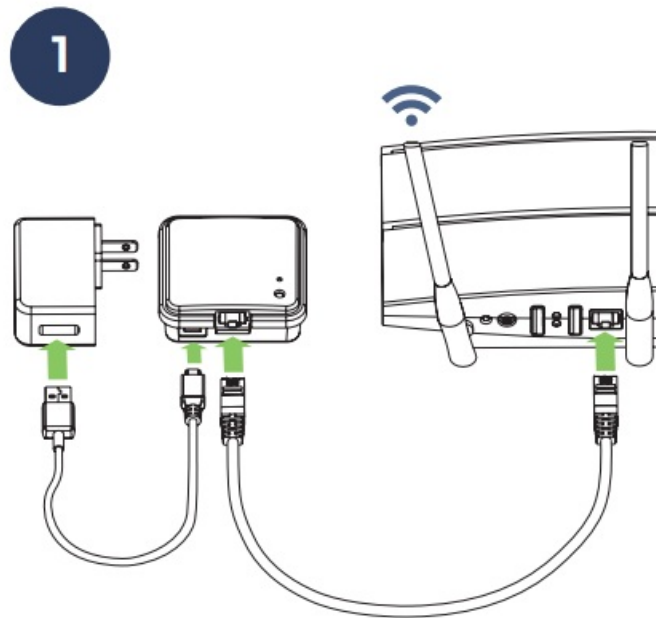
Setup and Troubleshooting

To set up the in.touch 3 & 3+ system, follow these steps:

1. Position the in.touch 3-Home unit outside near the spa.
2. Connect the unit to a power source using an extension cord.
3. If the LED blinks, check for the possible issues mentioned in the manual.
4. If the modules are out of range or unpaired, try moving them closer or follow the pairing instructions in the Techbook.
5. If the LED is green, ensure that port 10022 is open on your router for Internet access.

Contact Information

If you need further assistance or product information, reach out to your sales representative or contact Gecko Alliance using the provided information above.



Troubleshooting

Blinking LED Modules may be... Out of range Simply connect in.touch 3-Home outside, near the spa (using an extension cord for power). A router connection is not required for this test. If the modules stop blinking, the only

solution is to move them closer together.

For additional troubleshooting assistance or product information, contact your sales representative

- 450 des Canetons, Quebec City, QC Canada G2E 5W6
- + 1 800.78.GECKO, info@geckoal.com
- www.geckoalliance.com

FAQs


Q: What should I do if the LED continues blinking after troubleshooting?

A: If the LED persists, contact your sales representative or Gecko Alliance for advanced troubleshooting steps.

Q: Is a router connection required for the in.touch 3 & 3+ system?

A: A router connection is not necessary for basic setup and testing. However, for full functionality, ensure that port 10022 is open on your router.

Documents / Resources

	GECKO in.touch 3 and 3 Plus 2 Wifi Kit for Freeflow Spas [pdf] User Guide in.touch 3 and 3 Plus 2 Wifi Kit for Freeflow Spas, in.touch 3 and 3 Plus, 2 Wifi Kit for Freeflow Spas, Freeflow Spas
--	---

References

-  [Gecko | Spa & Hot Tub: Controls, Keypads, Pumps, Accessories](#)
- [User Manual](#)

Manuals+, Privacy Policy

This website is an independent publication and is neither affiliated with nor endorsed by any of the trademark owners. The "Bluetooth®" word mark and logos are registered trademarks owned by Bluetooth SIG, Inc. The "Wi-Fi®" word mark and logos are registered trademarks owned by the Wi-Fi Alliance. Any use of these marks on this website does not imply any affiliation with or endorsement.