



GEBERIT 131.002.00.5 Monolith Sanitary Module for Floor Standing WC Instructions

[Home](#) » [GEBERIT](#) » GEBERIT 131.002.00.5 Monolith Sanitary Module for Floor Standing WC Instructions 



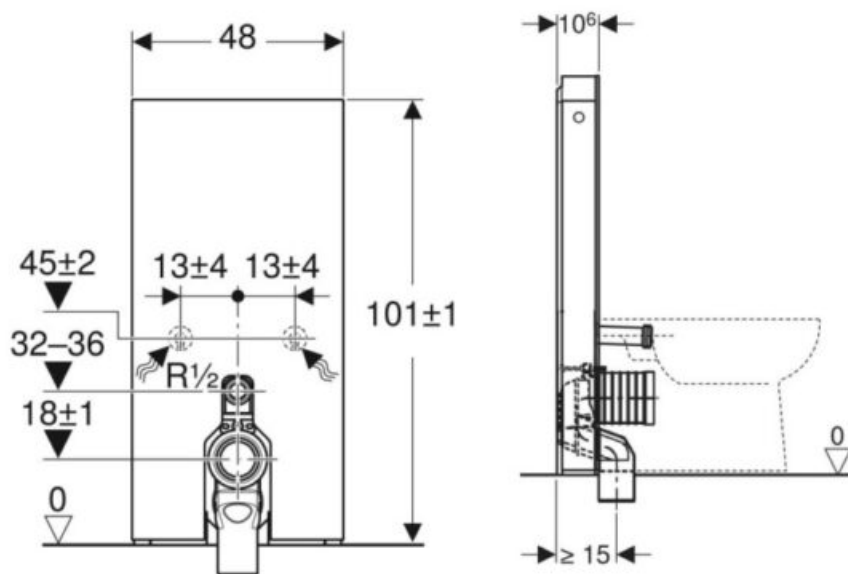
Example image

Contents

- 1 131.002.00.5 Monolith Sanitary Module for Floor Standing WC
- 2 Application purposes
- 3 Characteristics
- 4 Technical data
- 5 Scope of delivery
- 6 Accessories
- 7 Documents / Resources
 - 7.1 References

131.002.00.5 Monolith Sanitary Module for Floor Standing WC

Geberit Monolith sanitary module for floor-standing WC, 101 cm, front cladding made of stoneware



Application purposes

- For floor inlets
- For renovations, conversions and new buildings
- For wall inlets with an inlet height of 18 cm
- For floor-standing WCs with P-bend and water inlet height 32–36 cm above the floor (EN 33)
- For replacing low-level exposed cisterns
- For replacing floor-standing WCs with close-coupled exposed cistern
- For connecting Geberit AquaClean Tuma WC complete solution, floorstanding WC
- For connecting Geberit AquaClean WC enhancement solutions, with accessories
- For mounting on finished floors
- For installation in front of drywalls or solid walls

Characteristics

- Dual flush
- Compensation of dimensional tolerances possible
- Cistern, fully insulated against condensation

- Side cladding made of aluminium brushed
- Self-supporting
- Adjustable flush volume
- Water supply connection on the bottom
- Water supply connection on the left/right possible with accessories

Technical data

Flow pressure	0.1–10 bar
Operating temperature, water max.	25 °C
Flush volume, factory setting	6 / 3 l
Flush volume large, adjustment range	4.5 / 6 l
Flush volume small	3 l

Scope of delivery

- Water supply connection set with 2 angle stop valves, 1/2"
- Flush bend extension 160 mm
- Sleeve made of EPDM, ø44 / 55 mm
- Connection bend made of PP, ø 90 mm
- Adaptor socket made of PE-HD, ø 90 / 110 mm
- Base cover
- Fastening material for drywall
- Fastening material

Art. no.	Colour / surface	B	H	T
131.002.00.5	Front cladding: Stoneware slate look Side cladding: black chrome aluminium	48 cm	101 cm	10.6 cm
131.002.JV.5	Front cladding: Stoneware concrete look Side cladding: aluminium	48 cm	101 cm	10.6 cm

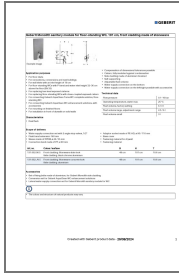
Accessories

- Set of fixing bolts made of aluminium, for Geberit Monolith side cladding
- Conversion set for Geberit AquaClean WC enhancement solutions
- Lateral water supply connection set for Geberit Monolith sanitary module for WC



The colour and structure of natural products may vary.

Documents / Resources



[GEBERIT 131.002.00.5 Monolith Sanitary Module for Floor Standing WC](#) [pdf] Instructions 131.002.00.5, 131.002.JV.5, 131.002.00.5 Monolith Sanitary Module for Floor Standing WC, 131.002.00.5, Monolith Sanitary Module for Floor Standing WC, Module for Floor Standing WC, Floor Standing WC, Standing WC, WC

References

- **[User Manual](#)**

[Manuals+](#), **[Privacy Policy](#)**

This website is an independent publication and is neither affiliated with nor endorsed by any of the trademark owners. The "Bluetooth®" word mark and logos are registered trademarks owned by Bluetooth SIG, Inc. The "Wi-Fi®" word mark and logos are registered trademarks owned by the Wi-Fi Alliance. Any use of these marks on this website does not imply any affiliation with or endorsement.