



GEARELEC GX10 Helmet Bluetooth Intercom System User Manual

[Home](#) » [GEARELEC](#) » GEARELEC GX10 Helmet Bluetooth Intercom System User Manual



GEARELEC

GX10 Helmet Bluetooth Intercom System
User Manual



Contents [[hide](#)]

- [1 GX10 Helmet Bluetooth Intercom System](#)
- [2 Parts](#)
- [3 Feature](#)
- [4 Target Users](#)
- [5 Buttons and Ope](#)
- [6 Pairing Steps](#)
- [7 Pairing with other Intercoms](#)
- [8 Documents / Resources](#)
- [9 Related Posts](#)

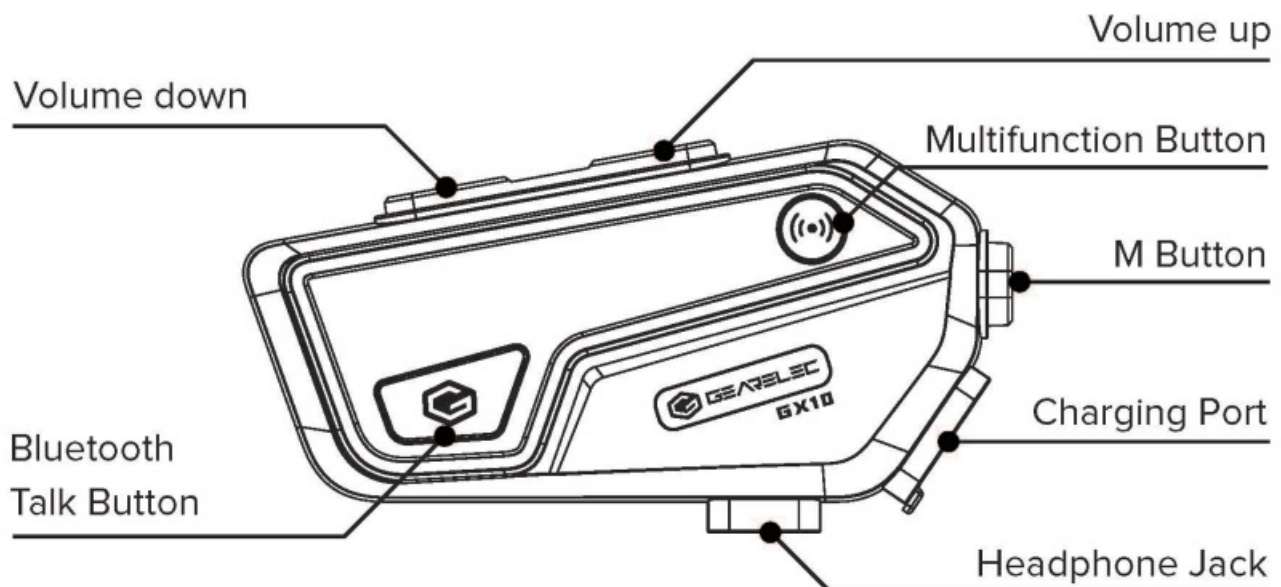
GX10 Helmet Bluetooth Intercom System

Description

Thank you for choosing the **GEARELEC GX10** helmet Bluetooth multi person intercom headset, which is designed for motorcycle riders to meet the functional needs to achieve multi person communication, answering and making calls, listening to music, listening to FM radio, and receiving GPS navigation voice during riding. It offers a clear, safe and comfortable riding experience.

GEARELEC GX10 has adopted new v5.2 Bluetooth which provides stable system operation, dual intelligence noise reduction, and low power consumption. With 40mm high-quality speakers and the smart microphone, it supports connection to multiple devices, realizing multi person communication. It is also compatible with third-party Bluetooth products. It is a high-tech Bluetooth multi person intercom headset that is fashionable, compact, energy-saving and environment-friendly, and has a user-friendly design.

Parts



Feature

- Qualcomm Bluetooth voice chip version 5.2;
- Intelligent DSP audio processing, CVC 12th generation noise reduction processing, 16kbps voice bandwidth transmission rate;
- One click networking of multi person communication, 2-8 rider communication at 1000m (ideal environment);
- Instant connecting and pairing;

- Music sharing;
- FM radio;
- 2-language voice prompt;
- Phone, MP3, GPS voice Bluetooth transfer;
- Voice control;
- Automatic call answer and last called number redial;
- Intelligent microphone pickup;
- Support voice communication at the speed of 120 km/h;
- 40mm tuning speaker diaphragms, shock music experience;
- IP67 waterproof;
- 1000 mAh battery: 25 hours of continuous intercom/call mode, 40 hours of music listening, 100 hours of regular standby (up to 400 hours without data network connection);
- Supports pairing with third-party Bluetooth intercoms;

Target Users

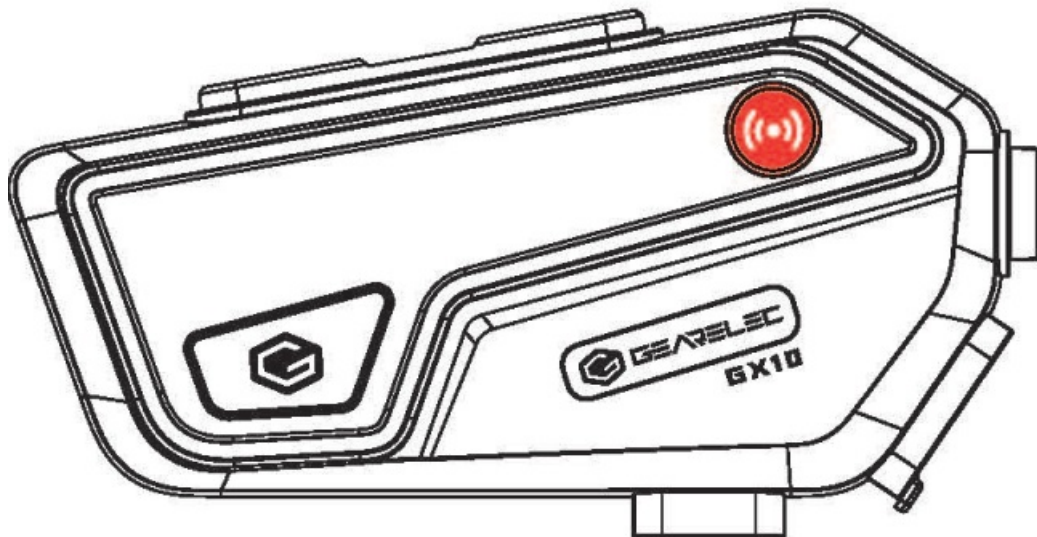
Motorcycle and bicycle riders; Ski enthusiasts; Delivery riders; Electric bike riders; Construction and mining workers; Fire fighters, traffic police, etc.

Buttons and Ope

Power on/off

Power on: Press and hold the Multifunction button for 4 seconds and you will hear a 'Welcome to Bluetooth Communication System' voice prompt and the blue light will flow once.

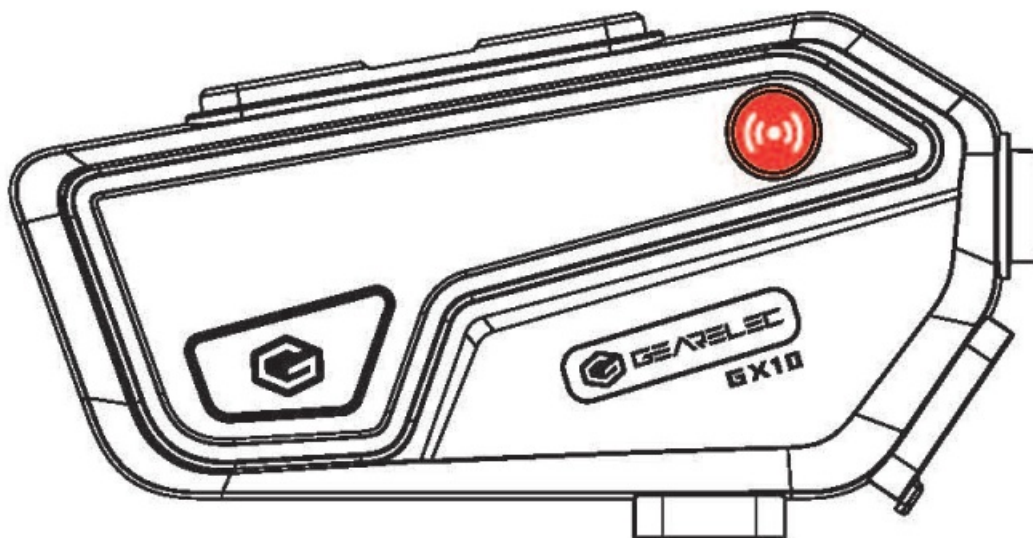
Power off Press and hold the Multifunction button for 4 seconds and you will hear a 'Power off' voice prompt and the red light will flow once.



Factory reset: In power-on state, press and hold the **Multifunction button + Bluetooth Talk button + M** button for 5 seconds. When the red and blue lights are always-on for 2 seconds, the factory reset is completed.

Calling

Answer incoming calls: When there is an incoming call, press the Multifunction button to answer the call;



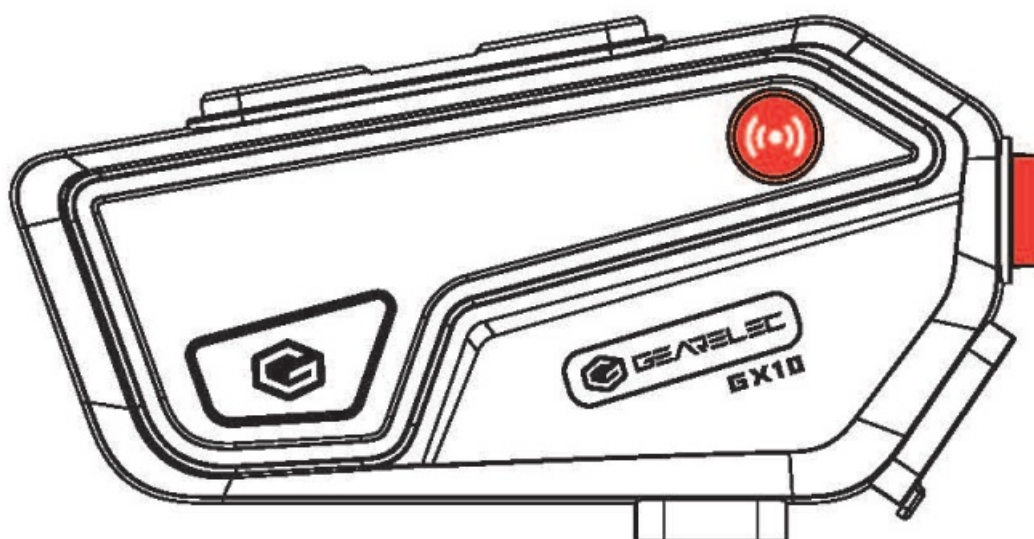
Auto call answer: In standby state, press and hold the Multifunction + M buttons for 2 seconds to activate automatic call answering;

Reject a call: Press and hold the Multifunction button for 2 seconds as soon as you hear the ringtone to reject the call;

Hang up a call: During a call, press the Multifunction button to hang up the call;

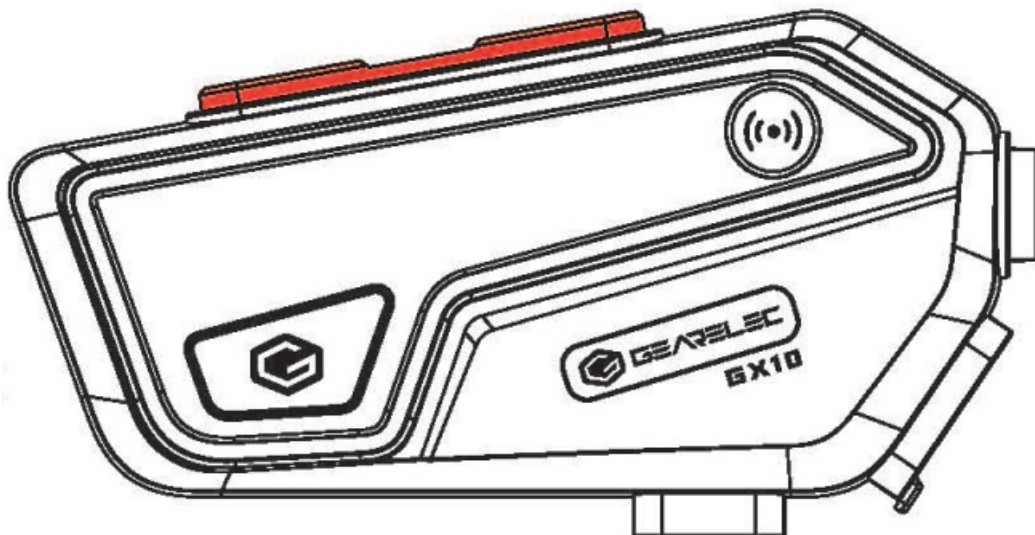
Last number redial: In standby state, double click the Multifunction button to call the last number that you have called;

Disable auto call answer: Press and hold the Multifunction + M buttons for 2 seconds to turn off automatic call answering.



Music control

1. **Play/pause:** When the Intercom is in Bluetooth connected state, press the Multifunction button to play music;
When the Intercom is in music playback state, press the Multifunction button to pause the music;



2. **Next song:** Press and hold the Volume up button for 2 seconds to select the next song;
3. **Previous song:** Press and hold the Volume down button for 2 seconds to switch back to the previous song;

Volume adjustment

Press the Volume up button to increase the volume and the Volume down button to decrease the volume

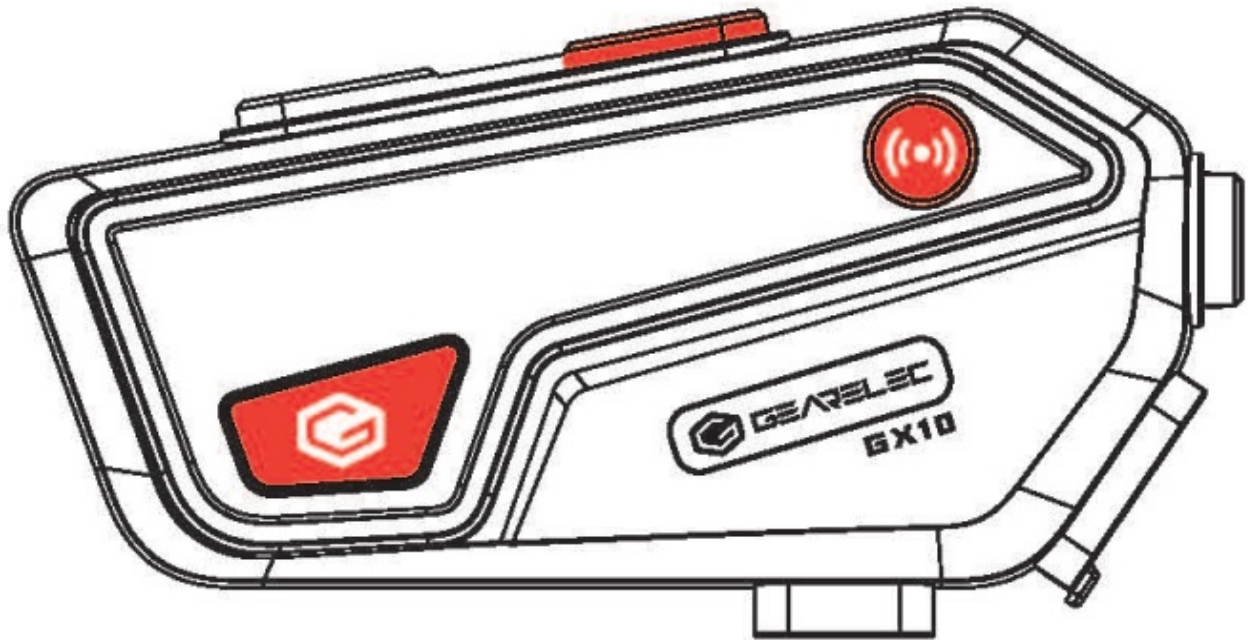
FM radio

1. Turn on the radio: In standby state, press and hold the M and Volume down buttons for 2 seconds to turn on the radio;
2. After turning on FM radio, press and hold the Volume up/down for 2 seconds to select stations
Note: Pressing the Volume up/down button is to adjust volume. At this time, you can increase or decrease the volume);
3. Turn off the radio: Press and hold M and Volume down buttons for 2 seconds to turn off the radio:

Notice:

1. When listening to the radio indoors where the signal is weak, you can try to place it close to the window or in open space and then turn it on.
2. In radio mode, when there is an incoming call, the intercom will automatically disconnect the radio to answer the call. When the call is over, it will switch back to radio automatically.

Switching voice prompt languages

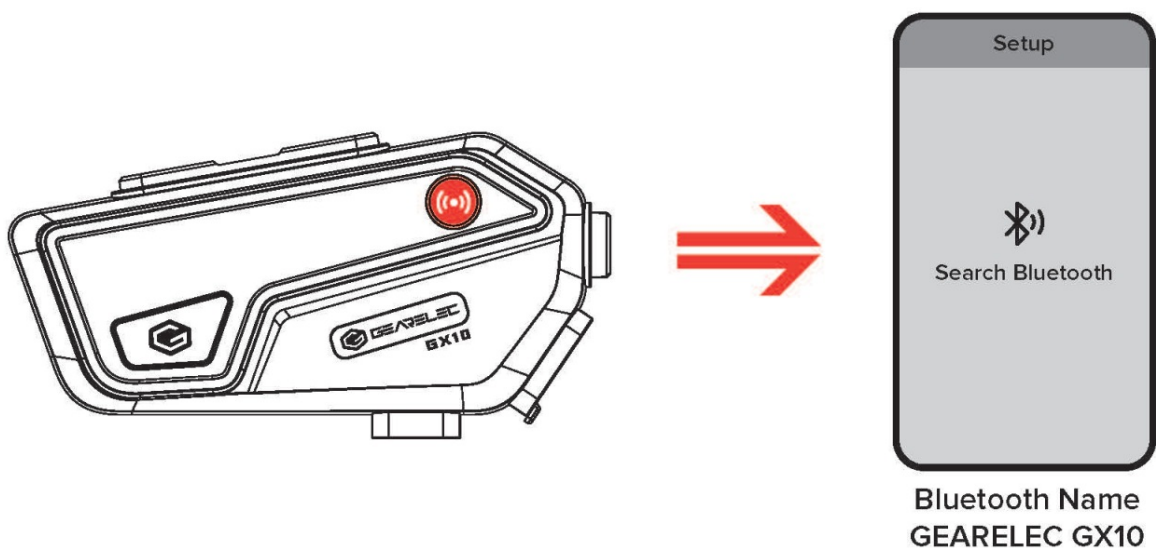


It has two voice prompt languages to choose from. In power-on state, press and hold the Multifunction button, Bluetooth Talk button, and Volume up buttons for 5 seconds to switch between the 2 languages.

Pairing Steps

Pairing with your phone via Bluetooth

1. Turn on Bluetooth: In power-on state, hold the M button for 5 seconds until the red and blue lights flash alternatively and there will be a 'pairing' voice prompt, waiting for connecting; if connected to other devices before, its blue light will flash slowly, please reset the intercom and power it on again.
2. Search, pair, and connect: In the state of red and blue lights flashing alternatively, open Bluetooth setting on your phone and let it search nearby devices. Select the Bluetooth name GEARELEC GX10 to pair and input password 0000 to connect. After connection is successful, there will be a 'Device Connected' voice prompt meaning pairing and connecting are successful. (Enter '0000' if password is required for pairing. If not, just connect.)



Notice

- a) If the intercom has been connected to other devices before, the blue indicator light will flash slowly. Please

reset the intercom and power it on again.

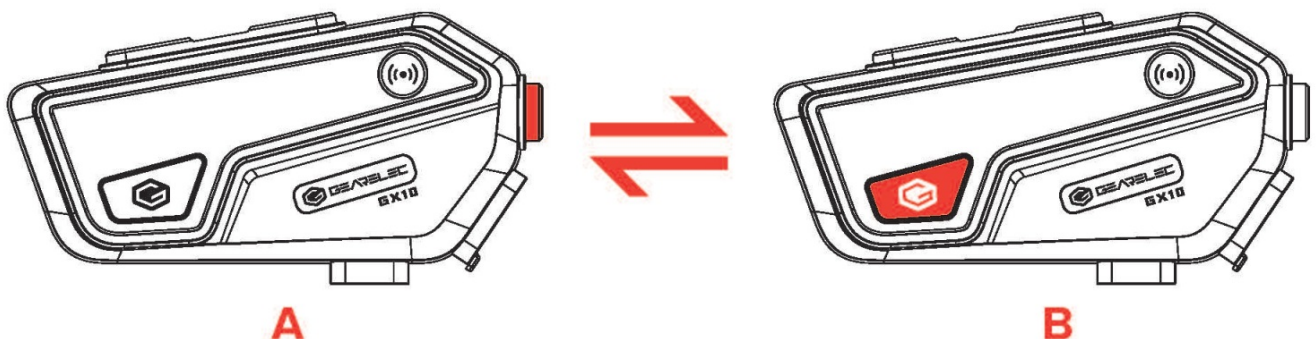
b) When searching Bluetooth devices, choose the name 'GEARELEC GX10' and input password '0000'. If pairing is successful, there will be a 'Device Connected' voice prompt: if re-connecting fails, forget this Bluetooth name and search and connect again.(Enter '0000' if password is required for pairing. If not, just connect.)

Pairing with other Intercoms

Pairing with a second GX10

Active/passive pairing steps:

1. Power on 2 GX10 units (A and B). Hold the M button of unit A for 4 seconds, the red and blue lights will flash alternatively and quickly, meaning passive pairing mode is activated:
2. Hold the Bluetooth Talk button of unit B for 3 seconds, the red and blue lights will flash alternatively and slowly, meaning active pairing mode is activated Start pairing actively after hearing a 'Searching' prompt:
3. When the 2 units are connected successfully, there will be a voice prompt and their blue lights will flash slowly.




Notice

- a) After pairing is successful, an incoming call will automatically disconnect communication when in intercom mode and it will switch back to intercom mode when the call is over;
- b) You can press the Bluetooth Talk button to reconnect the disconnected devices due to range and environmental factors when in communication with each other.
- c) In communication standby state, press the Bluetooth Talk button to communicate; then press the button to turn off intercom mode, press the Volume up/down button to Increase/decrease the talk volume.



Documents / Resources

 GEARELEC HELMET BLUETOOTH INTERCOM SYSTEM GX10 Bluetooth	GEARELEC GX10 Helmet Bluetooth Intercom System [pdf] User Manual GX10, 2A9YB-GX10, 2A9YBGX10, GX10 Helmet Bluetooth Intercom System, Helmet Bluetooth Intercom System, Bluetooth Intercom System
---	---