



GEA LED GFA1570 LED Step Light Installation Guide

[Home](#) » [GEA LED](#) » GEA LED GFA1570 LED Step Light Installation Guide 

Contents

- [1 GEA LED GFA1570 LED Step Light](#)
- [2 Product Information](#)
- [3 Product Usage Instructions](#)
- [4 FAQ](#)
- [5 Introduction](#)
- [6 Specifications](#)
- [7 Assembly instructions](#)
- [8 Customer Service](#)
- [9 Documents / Resources](#)
 - [9.1 References](#)



GEA LED GFA1570 LED Step Light



Specifications

- **Model:** GFA1570
- **Power Supply:** 220-240V, 50/60Hz
- **Light Source:** 3W LED
- **Protection Degree:** IP20

Product Information

This product contains a class light source and is designed for use with a 220-240V power supply. The 3W LED provides efficient lighting with a protection degree of IP20. Manufactured by GEA Luce SRL in Italy.

Product Usage Instructions

Assembly Instructions

- Follow the provided assembly instructions in the manual (Istruzioni di Montaggio) for proper installation of the product.

Lamp Usage

- Ensure the power supply is within the specified range (220-240V, 50/60Hz) before connecting the lamp. Do not exceed the recommended voltage to prevent damage.

Safety Information

- Handle the product carefully to avoid any damage to the light source. Ensure proper ventilation around the lamp for heat dissipation.

Contact Information

- For any inquiries or support, contact GEA Luce Srl via the provided contact details.

FAQ

- **Q: What should I do if the lamp is not working?**
 - **A:** Check the power supply and ensure it is within the specified range . If the issue persists, contact customer support for assistance.
- **Q: Can I use a higher-wattage bulb with this product?**
 - **A:** It is recommended to use the specified 3W LED bulb to prevent any damage to the product.

Introduction

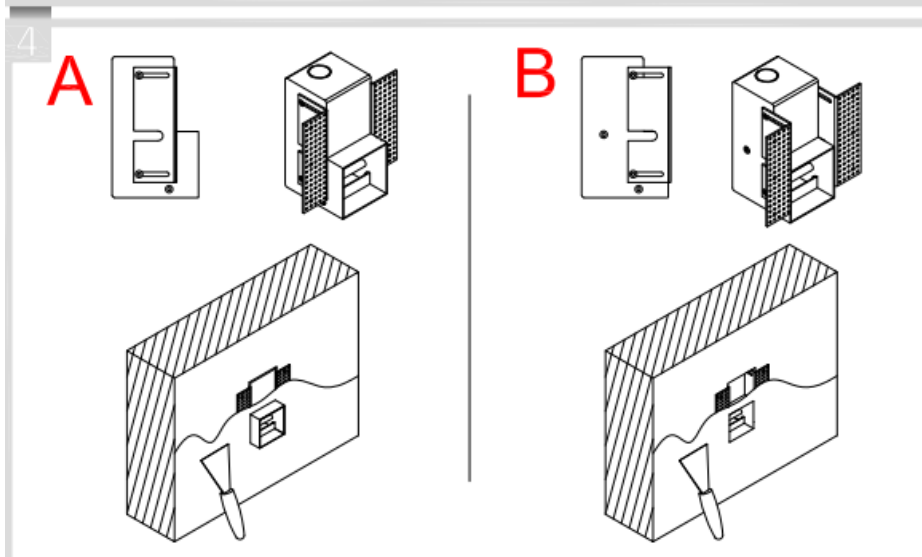
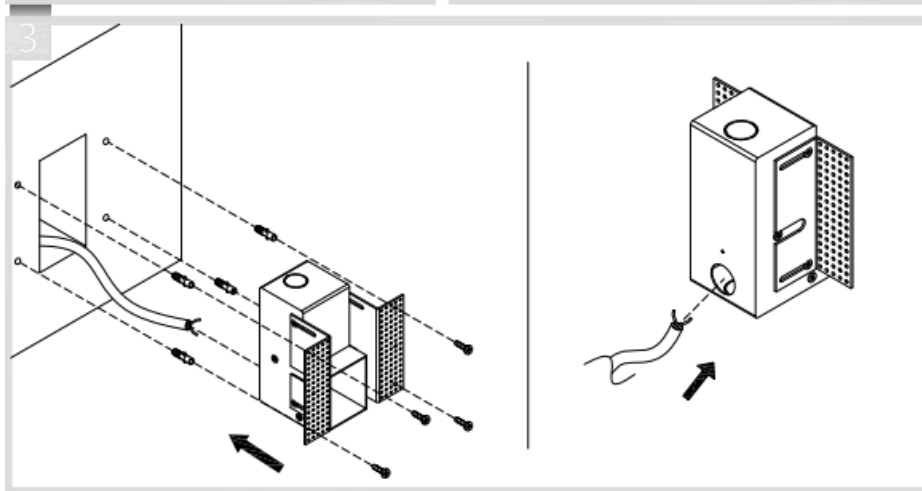
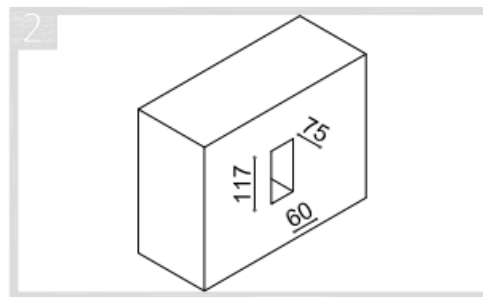
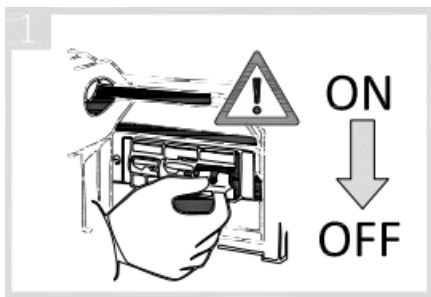
- Before performing any work on the device, make sure you have switched off the mains voltage.
- This device must be installed and assembled by qualified personnel. The device's safety is guaranteed only if these instructions are followed properly; therefore they should be kept for any future maintenance.
- The cables or electrical components should not be exposed to water or detergent. Clean by using a damp cloth and a mild detergent in warm water. Wipe the unit gently with a soft, clean cloth or cotton.

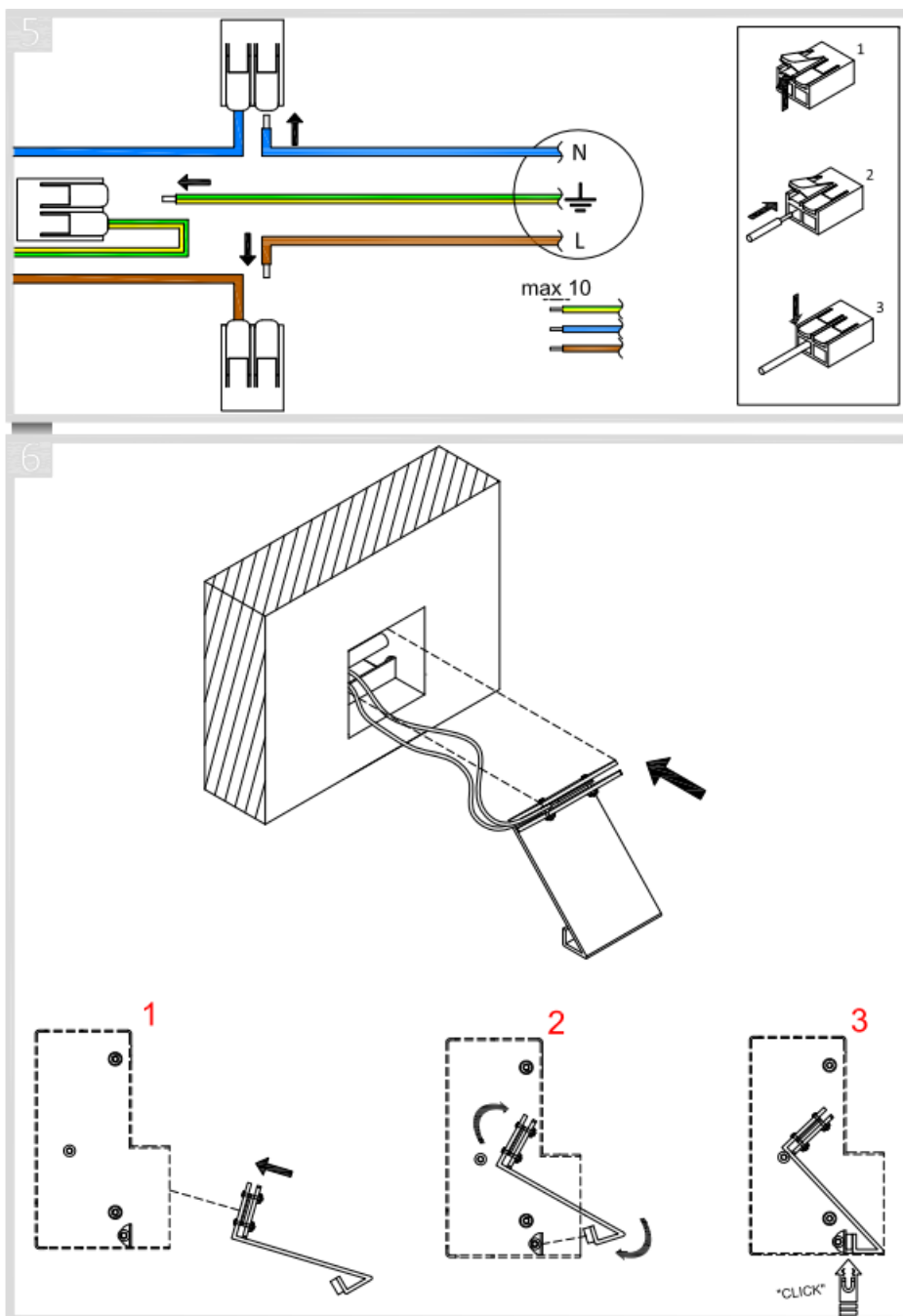
Specifications

Lampade



- **Lamps**
 - GFA1570 3W LED
- **Power supply**
 - 220-240 V
 - 50/60Hz
 - This product contains a class light source: E

Assembly instructions





SYMBOLS

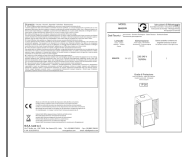
-  Certifies product compliance with current provisions of European directives
-  RAEE label (Waste Electronic and Electrical Equipment)

Customer Service

- G.E.A. Luce s.r.l.
- Via T. Tardio, snc – CAP 71016 San Severo (FG) – Italy
- Tel. +39 0882.374954
- Fax. +39 0882.336161
- P. IVA 01913370712
- www.gealuce.com

- email: info@gealuce.com

Documents / Resources



[GEA LED GFA1570 LED Step Light](#) [pdf] Installation Guide
GFA1570 LED Step Light, GFA1570, LED Step Light, Step Light, Light

References

- [🔗 GEA LUCE](#)
- [User Manual](#)

[Manuals+](#), [Privacy Policy](#)

This website is an independent publication and is neither affiliated with nor endorsed by any of the trademark owners. The "Bluetooth®" word mark and logos are registered trademarks owned by Bluetooth SIG, Inc. The "Wi-Fi®" word mark and logos are registered trademarks owned by the Wi-Fi Alliance. Any use of these marks on this website does not imply any affiliation with or endorsement.