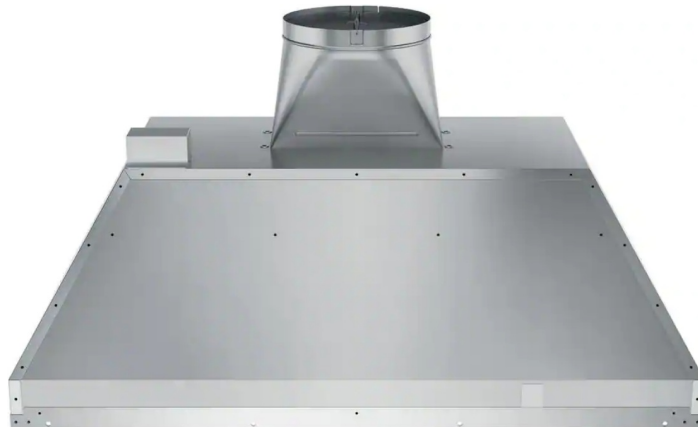


UVC9360SLSS Smart Insert Range Hood Installation Guide

[Home](#) » [GE](#) » UVC9360SLSS Smart Insert Range Hood Installation Guide 

UVC9360SLSS Smart Insert Range Hood Installation Guide



Contents

- [1 DIMENSIONS AND INSTALLATION INFORMATION \(IN INCHES\)](#)
- [2 FEATURES AND BENEFITS](#)
- [3 Documents / Resources](#)
 - [3.1 References](#)
- [4 Related Posts](#)

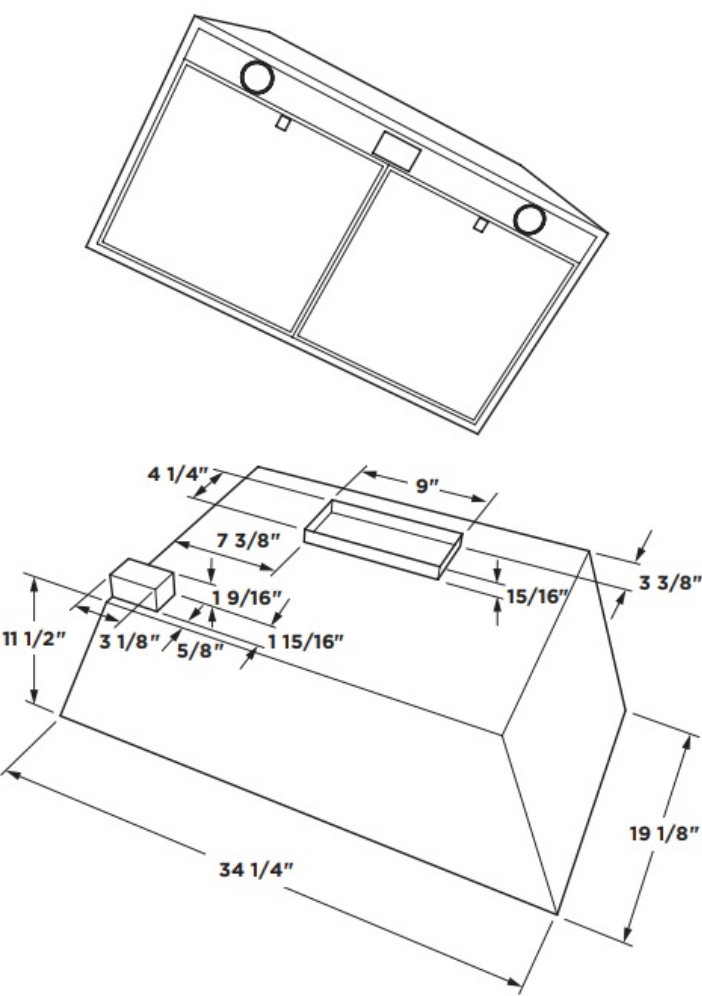
DIMENSIONS AND INSTALLATION INFORMATION (IN INCHES)

Installation Information: Before installing, consult installation instructions, packed with product, for current dimensional data.

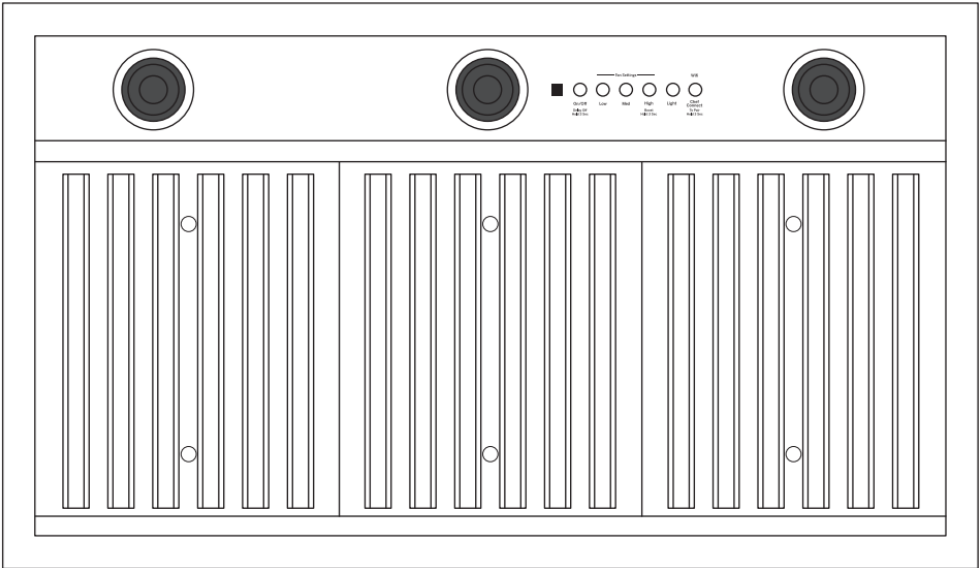
Accessories:

UXCF91 – Charcoal Filter
UXN70 – Recirculation Kit

AMP RATING	
120V	3.0



FEATURES AND BENEFITS



Adjustable CFM blower – High-powered 610-CFM blower range hood, adjustable downward to either 370 or 290 maximum CFM to accommodate different installation needs

Triple LED dimmable lighting – bulbs included – LED modules ensure bright lighting for the entire cooking

environment

Premium Bae Stainless Steel Filters – removes odors and grease from your cooking area and easy to clean in your dishwasher

Electronic backlit controls – Add a sophisticated look with this up-front, easy-to-use display

Chef Connect – Automatically control the hood’s lights and fan by syncing with the range

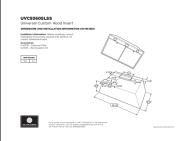
Remote control included – Activate and adjust your hood functions from anywhere in the kitchen

Four-speed fan control – Helps draw smoke, grease, odors and moisture out of the kitchen air

Model UVC9360SLSS – Stainless steel

For answers to your Monogram, Café™, GE Profile™ or GE Appliances product questions, visit our website at geappliances.com or call GE Answer Center® Service, 800.626.2000.

Documents / Resources

	<p>GE UVC9360SLSS Smart Insert Range Hood [pdf] Installation Guide UVC9360SLSS Smart Insert Range Hood, UVC9360SLSS, Smart Insert Range Hood, Insert Range Hood, Range Hood, Hood</p>
---	---

References

- [GE Appliances: Shop for Home, Kitchen, & Laundry Appliances](#)
- [User Manual](#)