

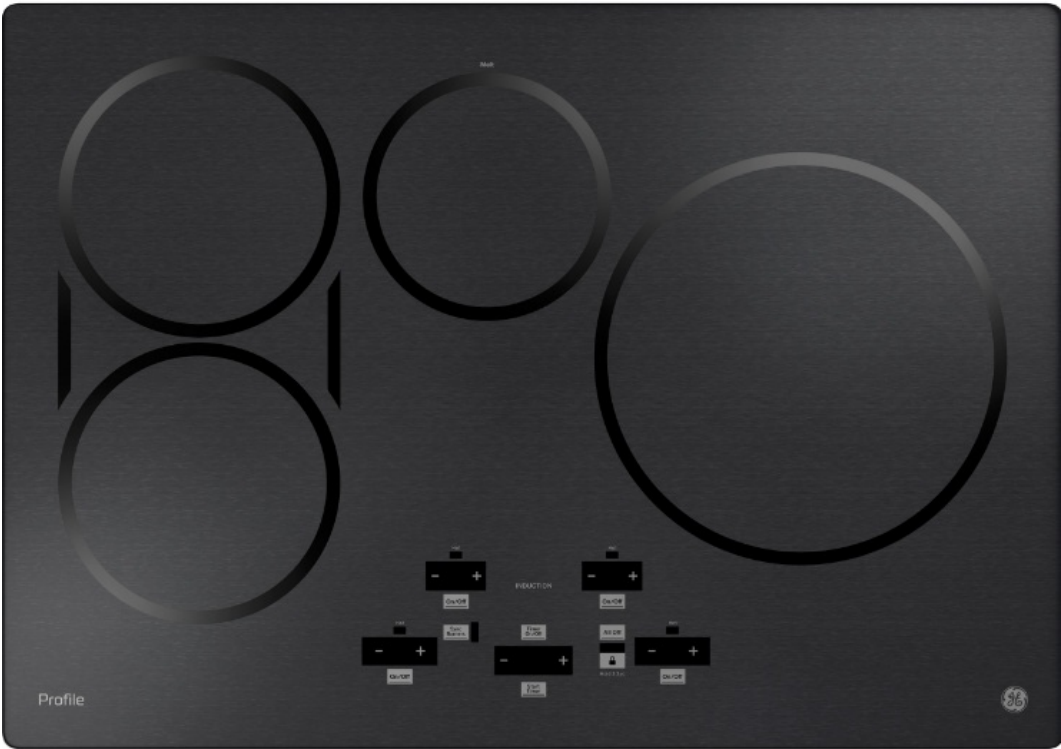


# GE Profile PHP9030ST 30 Inch Built-In Touch-Control Induction Cooktop Owner's Manual

[Home](#) » [GE Profile](#) » GE Profile PHP9030ST 30 Inch Built-In Touch-Control Induction Cooktop Owner's Manual



## GE Profile PHP9030ST 30 Inch Built-In Touch-Control Induction Cooktop



### Product Information

The GE Profile™ 30 Built-In Touch-Control Induction Cooktop is a high-quality cooking appliance that features a touch-control panel and induction technology. It has a KW rating of 240V 7.4 and 208V 6.4 with amperage of 240V 40 Amps and 208V 40 Amps. It comes with a filler trim kit for countertops larger than the dimension shown, up to 29-13/16 x 20-7/16, and a 48-inch flexible armored cable for installation. The cooktop is ADA compliant and listed by Underwriters Laboratories.

## Product Usage Instructions

Before installing the GE Profile™ 30 Built-In Touch-Control Induction Cooktop, ensure that there is a 3-inch free area between the bottom of the cooktop and any combustible material, i.e., shelving. If you are installing a wall oven underneath the cooktop, refer to the installation instructions, and no free area is required. The cooktop requires a minimum of 15 inches from the cooktop to adjacent overhead cabinets.

If your countertop cutout is larger than the dimension shown, up to 29-13/16 x 20-7/16, use the filler trim kit JXTR32B for black or JXTR32W for white to reduce the cutout opening for installation of this cooktop. These kits may be ordered from your GE Appliances Dealer.

The approximate cooking dimensions are as follows: 13 inches max depth of unprotected overhead cabinets, 4-5/8 inches at baffle near center of unit (except when installed above an approved wall oven) and 3-1/4 inches at rear of air intake, 29-7/8 inches for the width of the cooktop, and 21 inches for the depth of the cooktop. The cooktop requires a minimum of 1-3/4 inches to the rear wall, 19-1/4 inches for the distance from the left side cutout to the right side of the cooktop, and 28-1/16 inches for the distance from the front edge of the countertop to the front edge of the cooktop cutout. The cooktop also requires a minimum of 2-1/2 inches of clearance and a 15-inch height from the countertop to nearest cabinet (including light rails) on both sides of the cooktop.

If you are installing the cooktop above a wall oven, ensure that there is a minimum of 2-1/2 inches from the front edge of the countertop to the front edge of the cooktop cutout and 31-1/4 inches from the top surface of the countertop to the top surface of wall oven support platform.

When cutting the opening in the counter, it is best to make a template to ensure accuracy. The cooktop requires a minimum clearance of 30 inches from the countertop to an unprotected overhead surface and 2 inches of clearance to a side wall from cut-out on the left of the unit. There should also be a minimum clearance of 2 inches from cutout to nearest vertical wall or cabinet on the right side of the unit below the 15-inch clearance height. See label next to nameplate for MIN. clearance to rear wall. Check local codes for required breaker size.

For precision cooking, use the touch-control panel to select the desired temperature and cooking mode. The cooktop has various modes such as Melt, Warm, Sync Burners, Wi-Fi Connect, Bluetooth Connect, Low, High, and Precision Cooking. You can also use the Timer Cancel Hold 3 Sec to cancel the timer or Lock Controls Hold 3 Sec to lock the controls. The cooktop also has an All Off button to turn off all cooking zones.

If you want to use smart cookware, you can earn a rebate for a free 11 Hestan Cue Smart Pan. You can also use an optional Sous Vide Probe (part number JXPROBE1) to achieve great results on the stove. If you are replacing a similar cooktop from GE Appliances or another brand, GE cooktops are guaranteed for an exact fit or GE Appliances will pay up to \$100 toward modifications.

For more information, visit [geappliances.com](http://geappliances.com).

## DIMENSIONS AND INSTALLATION

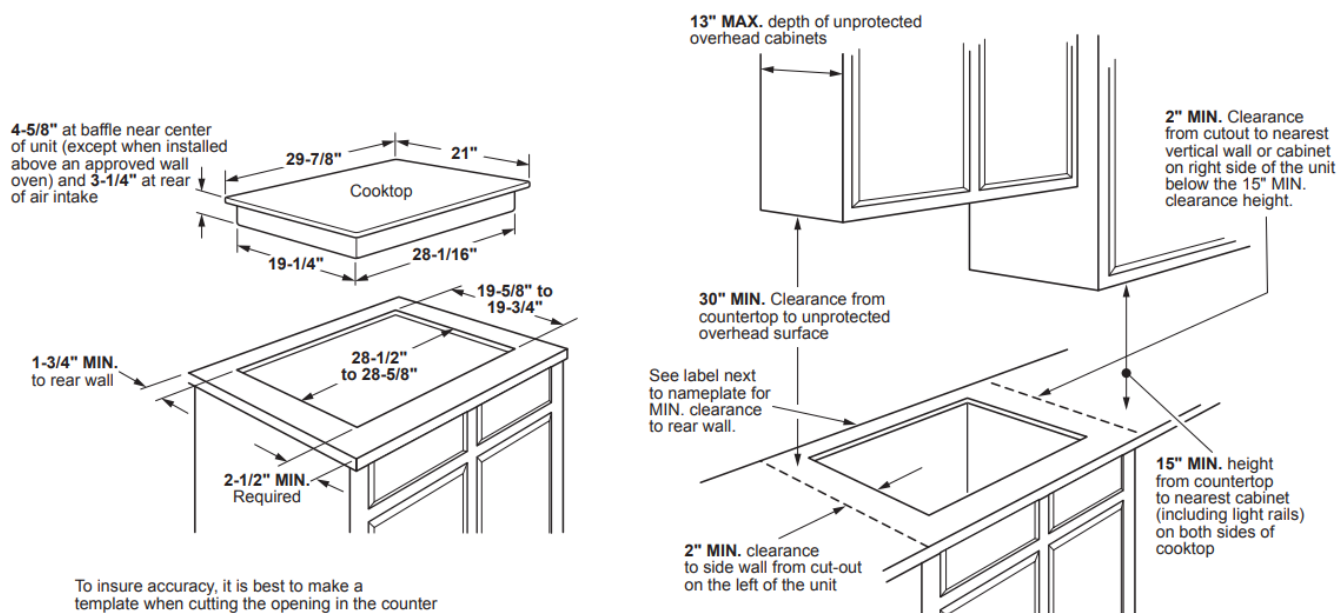
### DIMENSIONS AND INSTALLATION INFORMATION (IN INCHES)

- **IMPORTANT:** Requires a 3" free area between the bottom of the cooktop to any combustible material, i.e.,

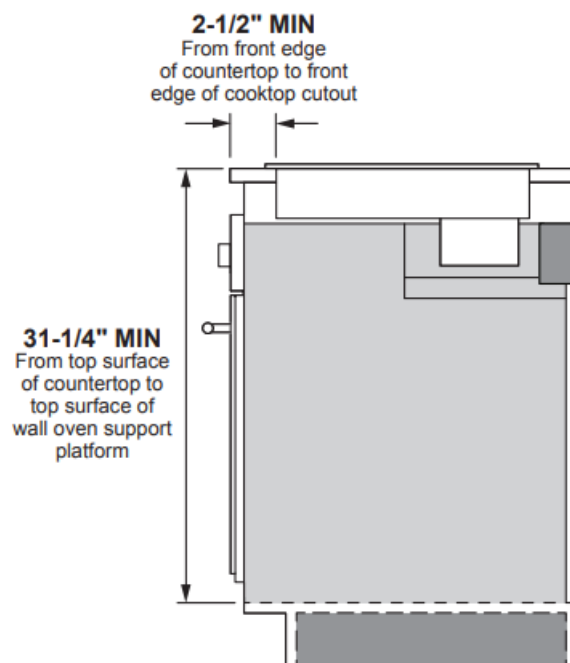
shelving. Free area not required when installing wall oven underneath cooktop. Refer to installation instructions. Requires a 15" minimum from cooktop to adjacent overhead cabinets. Units are furnished with a 48" flexible armored cable.

- **NOTE:** 30" induction cooktops are approved for use over select GE 27" and GE 30" Single Wall Ovens and Warming Drawers. Refer to cooktop and wall oven/warming drawer installation instructions packed with product for current dimensional data. If installed with a GE Telescopic Downdraft System, consult both the cooktop and downdraft installation instructions packed with product before installing. Cooktop gas/electric supply may need to be re-routed to install downdraft. The countertop cutout requires 23-1/2" minimum flat countertop surface and 25" minimum total countertop depth. In addition, other clearances to front edge of the countertop must be considered. Before installing, consult installation instructions packed with product for current dimensional data.
- **CUTOUT FILLER TRIM KIT:** A filler trim kit is available for use if your countertop cutout is larger than the dimension shown, up to 29-13/16" x 20-7/16". Order JXTR32B for black or JXTR32W for white, to reduce the cutout opening for installation of this cooktop. These kits may be ordered from your GE Appliances Dealer.

## APPROXIMATE COOKING DIMENSIONS



## INSTALLATION ABOVE A WALL OVEN



KW RATING	
240V	7.4
208V	6.4
AMPERAGE	
240V	40 Amps†
208V	40 Amps†

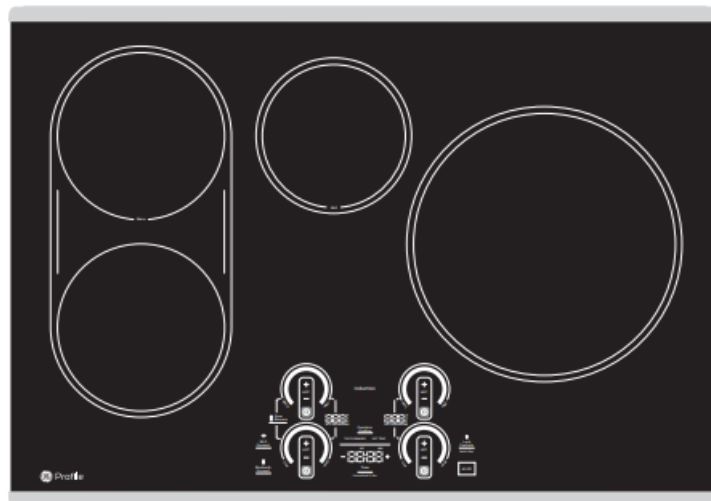
**NOTE:** Check local codes for required breaker size.

For answers to your Monogram, GE Café™, GE Profile™ or GE Appliances product questions, visit our website at [geappliances.com](http://geappliances.com) or call GE Answer Center® Service, 800.626.2000.

## FEATURES AND BENEFITS

- Maximum Responsiveness – 19 Control Levels
- Power Boil
- Precision Temperature Control
- Guided Cooking
- Easy Clean Surface
- Safe Surface
- Most Efficient Heating
- Synchronized Elements
- Chef Connect
- Smart Cookware Rebate for 11" Smart Pan
- Timer
- Built-in WiFi
- Control Lock

- Fit Guarantee
- Model PHP9030STSS – Stainless Steel



#### • SMART COOKWARE REBATE

Smart pans pair with this smart cooktop to ensure you get the perfect cooking results. Earn a rebate for a free 11" Hestan Cue Smart Pan.

#### • OPTIONAL FILLER TRIM KIT

Fill in any counter top gaps with this filler trim kit. Order part number JXTR32B.

#### • OPTIONAL SOUS VIDE PROBE


A Sous Vide Probe lets you achieve great results on the stove. Order part number JXPROBE1.

#### • GUARANTEED FIT

Replacing a similar cooktop from GE Appliances or another brand? GE cooktops are guaranteed for an exact fit or GE Appliances will pay up to \$100 toward modifications.

Visit [geappliances.com](https://www.geappliances.com) for more info.

## Documents / Resources

	<p><a href="#">GE Profile PHP9030ST 30 Inch Built-In Touch-Control Induction Cooktop</a> [pdf] Owner's Manual</p> <p>PHP9030ST 30 Inch Built-In Touch-Control Induction Cooktop, PHP9030ST, 30 Inch Built-In Touch-Control Induction Cooktop, Built-In Touch-Control Induction Cooktop, Touch-Control Induction Cooktop, Induction Cooktop, Cooktop</p>
---	---

## References

- [GE Appliances: Shop for Home, Kitchen, & Laundry Appliances](https://www.geappliances.com)