



# GE Lighting CYNC Smart Dimmer Light Switch Motion Sensor Installation Guide

[Home](#) » [GE Lighting](#) » GE Lighting CYNC Smart Dimmer Light Switch Motion Sensor Installation Guide 

## Contents

- [1 GE Lighting CYNC Smart Dimmer Light Switch Motion Sensor](#)
- [2 Simple DIV Set Up](#)
- [3 Compatibility Requirements](#)
- [4 Let's Do It](#)
- [5 Remove Your Old Switch](#)
- [6 Connect The Wires](#)
- [7 Fit Wires Into Wall Box](#)
- [8 Secure The Switch](#)
- [9 Turn The Power Back On](#)
- [10 Additional Information and Warnings](#)
- [11 Documents / Resources](#)
- [12 Related Posts](#)



**GE Lighting CYNC Smart Dimmer Light Switch Motion Sensor**



### **WARNING: RISK OF ELECTRIC SHOCK**

This product installation requires handling 120 volt wiring. Follow each step carefully. If any concerns handling wiring, hire a qualified electrician. Ensure all work meets applicable local and national codes.

### **Simple DIV Set Up**



### **Compatibility Requirements**

- Rating 120V AC 60Hz
- Neutral wire is required (Wire is usually white or grey)
- Ground wire is required (Wire is usually green, green with a yellow stripe, or copper) (£)
- Wi-Fi 802.11 b/g/n @ 2.4 GHz is required
- Works with halogen, incandescent and LED bulbs, including Cync smart bulbs. For a list of compatible dimmable bulbs, visit [gelighting.com/compatibility](http://gelighting.com/compatibility)
- Max LED rating 1.25 amps / 150W
- Max incandescent/halogen rating 150W

### **IMPORTANT NOTE ON 3-WAY WIRING:**

Some lights have one wall switch, while others are controlled by two or more wall switches (such as stair lights, which have a switch at both the top and bottom of the stairs). If your lights have more than one switch (called a 3-way), we've created instructions for how to install and enable the capability. 3-way control requires 2 CYNC wired switches or 1 wired and wire-free.

Visit [cyncsupport.gellighting.com](https://cyncsupport.gellighting.com) for 3-way Installation Instructions and how-to videos.

**Note:** Complete set up in the CYNC App to enable 3-way/multiway functionality.

GE is a trademark of General Electric Company. Used under trademark license. Amazon, Alexa, and all related logos are trademarks of Amazon.com, Inc. or its affiliates. Google and other related marks and logos are trademarks of Google LLC.

## Let's Do It

### Included:



Switch



Wall Plate



4 Wire Nuts  
4 Wire Labels



4 Phillips  
Mounting  
Screws

### You'll need:



Phillips Screwdriver



Needlenose Pliers  
(Recommended)



Voltage Tester  
(Recommended)

Approximately 30 minutes of your day to  
install and set up the switch

**You Got This!** And we're here to help. For in-depth instructional videos and a guided tour through the installation, go to: [cyncsupport.gellighting.com](https://cyncsupport.gellighting.com) or call 1-844-302-2943



Scan here for videos & guided installation steps.

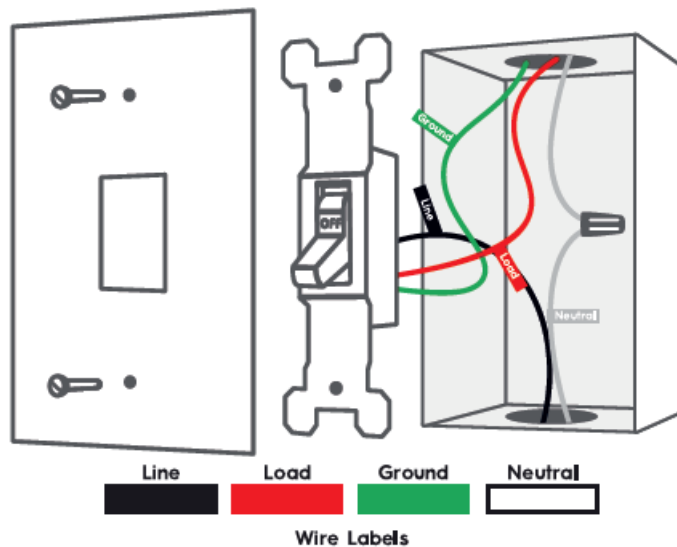
Turn Off The Power!

1. Turn off the power for the switch location at the circuit breaker box.

2. Test existing switch by toggling switch on/off, ensuring lights do not turn on.
3. Now, follow these setup steps for a single gang switch.

## Remove Your Old Switch

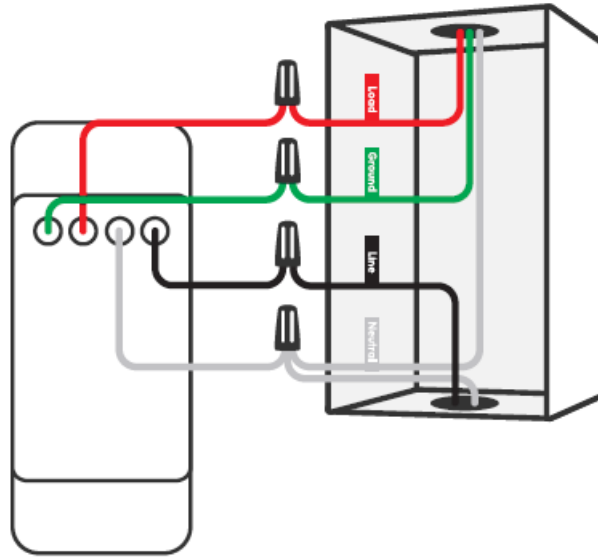
1. Remove the existing wall plate and switch from the wall.
2. Use voltage tester on the black wires to confirm power to the switch is off (recommended).
3. Before disconnecting the wires from the wall, label each with the provided wire labels. A Neutral and ground wires are required. If you don't have either wire, the Cync switch is not compatible.
4. Disconnect wires and remove existing switch.



## Connect The Wires

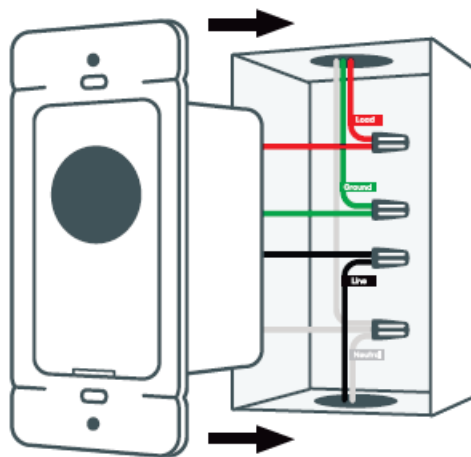
1. Connect the neutral (white) wire on the switch to the neutral (white label) wire from the wall.
2. Connect the black line wire from the switch to the line (black label) wire from the wall.
3. Connect the load red wire from the switch with the load (red label) from the wall.
4. Connect the ground (green) wire on the switch with the ground (green label) wire from the wall.
5. Cap the 3-way/multi-way traveler wire (if applicable). For 3-way switch setup, visit [cyncsupport.gelighting.com](https://cyncsupport.gelighting.com)

**Attention:** Incorrectly connecting the Neutral or Ground wire from the wall to the Line or Load wire on the switch will damage the product.



## Fit Wires Into Wall Box

Neatly push the wires back into the box, rotating the switch so it's oriented according to the image .



## Secure The Switch

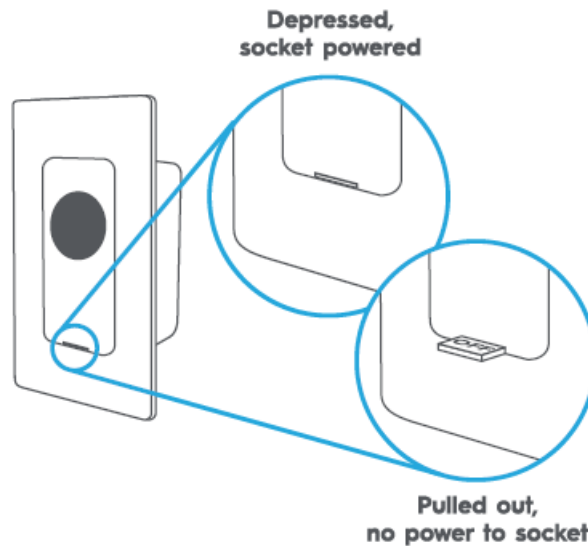
1. Using a Phillips screwdriver and the screws provided, secure the switch to the wall until level and flush.
2. Screw on the wall plate bracket, then snap the wall plate cover onto the bracket.

## Turn The Power Back On

After the switch is secured and wall plate mounted, turn the power back on at the circuit breaker box. At the switch, the light ring will flash blue indicating the device is wired correctly and the device is in setup mode. Light ring will continuously flash blue until the switch is added to the Cync App. Light ring will not illuminate if wired incorrectly.

## IF LIGHTS DON'T TURN ON:

1. Check that air gap switch is depressed.
2. Check that power to the switch is on at the breaker.
3. Turn power off at the breaker, return to the switch to confirm the wires are securely and properly wired according to the installation guide.
4. Go to [cyncsupport.gelighting.com](http://cyncsupport.gelighting.com) for more troubleshooting.



### **Congratulations!**

You've completed the Smart Switch installation..

### **Next...**



**Download  
the CYNC App**



**Add your  
Smart Switch  
to  
the CYNC App**



**Set up your Alexa  
or Hey Google  
voice assistant  
(optional)**

### **Enable Your Voice Assistant**

Connect to your Amazon Alexa or Hey Google voice assistants in the CYNC App.

### **Then try this ...**

Alexa, turn off the living room.  
Alexa, turn on the bedroom.  
Alexa, set kitchen to 50%  
Hey Google, turn on the lights.  
Hey Google, good morning.  
Hey Google, I'm leaving.

### **Additional Information and Warnings**

#### **FCC Compliance Statement Compliance Notice:**

This equipment has been tested and found to comply with the limits for a Class B digital device, pursuant to part

15 of the FCC Rules. These limits are designed to provide reasonable protection against harmful interference in a residential installation. This equipment generates, uses and can radiate radio frequency energy and, if not installed and used in accordance with the instructions, may cause harmful interference to radio communications. However, there is no guarantee that interference will not occur in a particular installation. If this equipment does cause harmful interference to radio or television reception, which can be determined by turning the equipment off and on, the user is encouraged to try to correct the interference by one or more of the following measures:

- Reorient or relocate the receiving antenna.
- Increase the separation between the equipment and receiver.
- Connect the equipment into an outlet on a circuit different from that to which the receiver is connected.
- Consult the dealer or an experienced radio/TV technician for help.

This device complies with part 15 of FCC rules. Operation is subject to the following two conditions:

- This device may not cause harmful interference.
- This device must accept any interference received, including interference that may cause undesired operation.

Changes or modifications that are not expressly approved by the manufacturer could void the user's authority to operate the equipment.

**RF Exposure Information:**

This equipment complies with FCC radiation exposure limits set forth for an uncontrolled environment. In order to avoid the possibility of exceeding the FCC radio frequency exposure limits, human proximity to the antenna shall not be less than 8 inches during normal operation.

**RF Exposure Statement:**

This equipment complies with IC RSS-102 radiation exposure limits set forth for an uncontrolled environment. This transmitter must be installed to provide a separation distance of at least 8 inches from all persons and must not be collocated or operating in conjunction with any other antenna or transmitter.

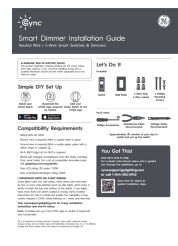
**Caution (dimmer)**

To reduce the risk of overheating and possible damage to other equipment, do not install to control a receptacle or motor-operated appliance or transformer-supplied appliance.

For supply connections, use copper wire only rated at 75°C.

**Caution High Voltage**

- Disconnect power supply before servicing
- **Operation temperature:** 0 to 40°C
- For Control of Electronic Ballast, CFLs, LED, and LED Lamps Type Enclosure
- IP20
- **Pollution Degree** 2
- **Impulse Voltage:** 2500V
- Type I.B action
- Indoor use only
- Like your new Smart Switch?
- Share your experience
- Leave a review where you purchased the product.

The thumbnail shows the first page of the 'CYNc Smart Dimmer Installation Guide'. It features the GE logo and 'CYNc' branding. The title is 'Smart Dimmer Installation Guide'. Below the title, it lists 'Simple DIY Set Up' and 'Compatibility Requirements'. There are also icons for 'Let's Do It' and a 'This Guy Thinks' section.

[GE Lighting CYNc Smart Dimmer Light Switch Motion Sensor](#) [pdf] Installation Guide  
CYNc Smart Dimmer Light Switch Motion Sensor, CYNc, Smart Dimmer Light Switch Motion S  
ensor, Light Switch Motion Sensor, Switch Motion Sensor, Motion Sensor