



GE current LPL22 Value Series Panel Light Gen D LED Recessed Luminaire Owner's Manual

[Home](#) » [GE current](#) » GE current LPL22 Value Series Panel Light Gen D LED Recessed Luminaire Owner's Manual 

GE current LPL22 Value Series Panel Light Gen D LED Recessed Luminaire



Contents

- [1 CONSTRUCTION](#)
- [2 OPTICAL SYSTEM](#)
- [3 ELECTRICAL](#)
- [4 CONTROLS](#)
- [5 LUMEN AMBIENT TEMPERATURE](#)
- [6 LUMEN MAINTENANCE](#)
- [7 MOUNTING](#)
- [8 DESIGN LIFE & WARRANTY](#)
- [9 ACCESSORIES](#)
- [10 PRODUCT & ACCESSORY DIMENSIONS](#)
- [11 SURFACE MOUNT KIT DIMENSIONS](#)
- [12 PHOTOMETRICS \(3750LM@3500K\)](#)
- [13 DAINTREE CONTROLS](#)
- [14 Customer Support](#)
- [15 Documents / Resources](#)
 - [15.1 References](#)
- [16 Related Posts](#)

CONSTRUCTION

Housing: Durable, long lasting steel construction. Aluminum extruded frame

Lens: Precision formed optical assembly

Paint: Post painted powder coat finish

Weight: 7.7 pounds

OPTICAL SYSTEM

Lumens: 2400/3750/4350 Lumens@3500K (Field Switchable)

Wattage: 21.5/34/39.5W (Field Switchable)

Efficacy: Up to 124 LPW

CCT: 3500K, 4000K, 5000K (Field Switchable)

CRI: 80+, R9 >0

ELECTRICAL

Input Voltage: 120–277V

Input Frequency: 50/60Hz

Standard Dimming Control: 0–10V, Dimming

Power Factor (PF)*: >0.9

Total Harmonic Distortion (THD)*: <20%

** PF and THD may vary with options*

CONTROLS

Dimming: Standard: 0–10V, Dimming

Sensors: Daintree® Wireless, with high-end trim

LUMEN AMBIENT TEMPERATURE

TYPE	TEMPERATURE RATE
OPERATING TEMPERATURE	0°C TO +40° C
STORAGE TEMPERATURE	-40°C TO +70°C

LUMEN MAINTENANCE

L85 @ 60,000 Hours: L85

MOUNTING

- **Typical Mounting:** Fits standard T-Bar grid (drop ceilings)
- **Wiring Access:** ½" trade-size KOs
- **T-grid Clips:** T-grid clips attached, with holes for seismic wires
- **Surface Mounting:** Surface mount kit available

DESIGN LIFE & WARRANTY

- Damp Location rated
- IC rated and Chicago Plenum (CCEA)
- UL/cUL Listed
- RoHS compliant
- ANSI C82.77 Compliant
- Option of ISO 4 rated under positive and negative pressure
- **Current's Limited 5-year Warranty:**

Please refer to document [IND599](#) for more information.

Please refer to DLC QPL website for the latest and most complete information www.designlights.org/QP



Ordering Information¹ (Important: Please see note 1 below):

LPL 22 D 0 3X MM 8XX LT WHITE
 _ _ _ _ _ _ _ _ _ _ _ _ _ _ _ _ _ _ _ _ _

FA MIL Y	FIXTU RE T YPE	GEN ERAT ION	VOLTA GE	NOMIN AL LU MENS	DISTRI BUTIO N	CRI/CCT	CONTRO LS	MOU NTIN G	FINISH	OPTIONS
LPL = Prol ine ® P anel Ligh t	22 = 2 ' x 2'	D = 4t h Gen eration	0 = 120 –277V	3X = N ominal Lumen Level (<i>middle i s default</i> t)	MM = Med. L ambert ain	8 = 80 CRI 3500/4000/ 5000K Switchable (4000K is d efault)	VQ = 0 – 10V Dim ming TE = Dai ntree® E Z Connec t Non-Up gradable, WIT100	LT = T-Gri d	WHITE = White	C4^{4,5,6} = IS O 4 rated <i>All options a re sold separately a s accessories, please see below.</i>

ORDERING NOTES:

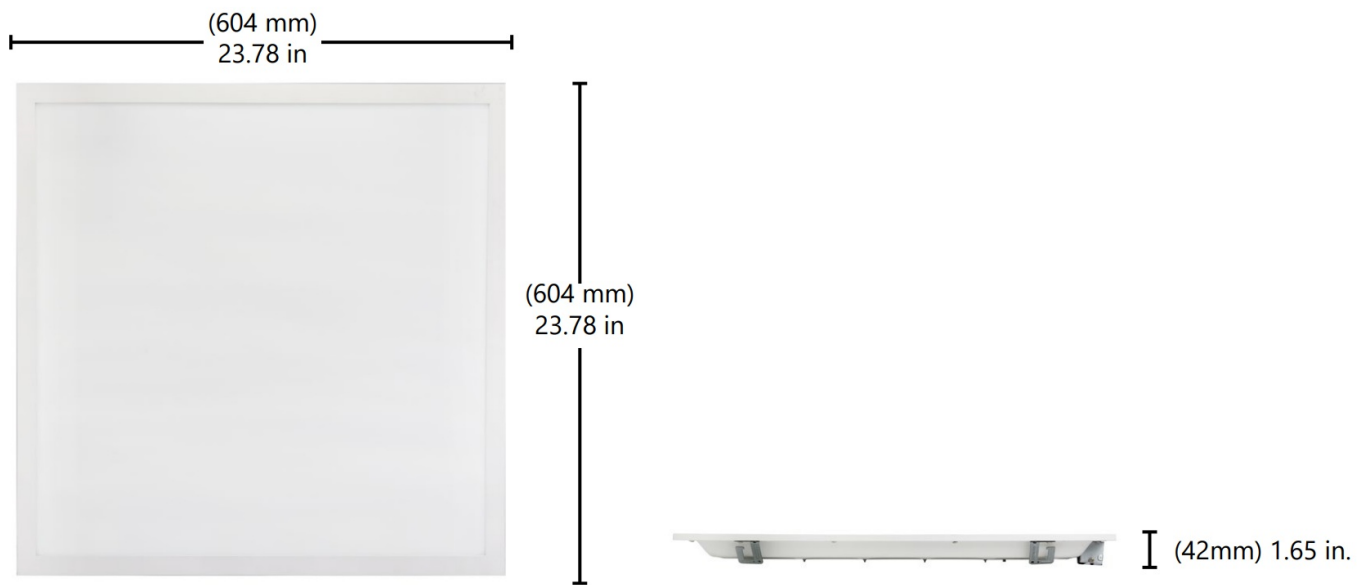
1. ALL LPL UNITS ARE PRICED AS SINGLE UNITS AND MUST BE ORDERED AS SINGLE UNITS IN EVEN QUANTITIES AS THIS PRODUCT IS PACKED TWO PER BOX. IT SHOULD BE NOTED IN RECEIVING DOCUMENTS THAT ONE BOX HAS TWO UNITS AND SHOULD BE RECEIVED AS TWO UNITS.
2. All options are accessories that are quickly and easily attached and/or wired to the luminaire in the field by the installer.
3. Fixture is field configurable for three different lumens and CCT levels with switches. Switch defaults are the middle level (4100 lumens @34w and 4000K).
4. ISO rated fixtures must be installed per manufacturer's instructions to maintain ISO rating.
5. ISO rated fixtures available as factory supplied option.
6. ISO option for recessed fixtures only, for drywall applications consult factory

EXAMPLE CONFIG URATIONS	LUMINAIRE LUME NS (SWITCHABLE3)	LUMINAIRE TOT AL SYSTEM WAT TS	LUMINAIRE CCT (SWITCHABLE3)	LPW	ONE WEE K 1 –100 UNI TS
LPL22D03XMM8XX VQLTWHITE	2400/3750/4350	21.5/34/39.5W	3500K/ 4000K/ 50 00K	>110	YES
LPL22D03XMM8XXT ELTWHITE	2400/3750/4350	21.5/34/39.5W	3500K/ 4000K/ 50 00K	>110	YES

ACCESSORIES

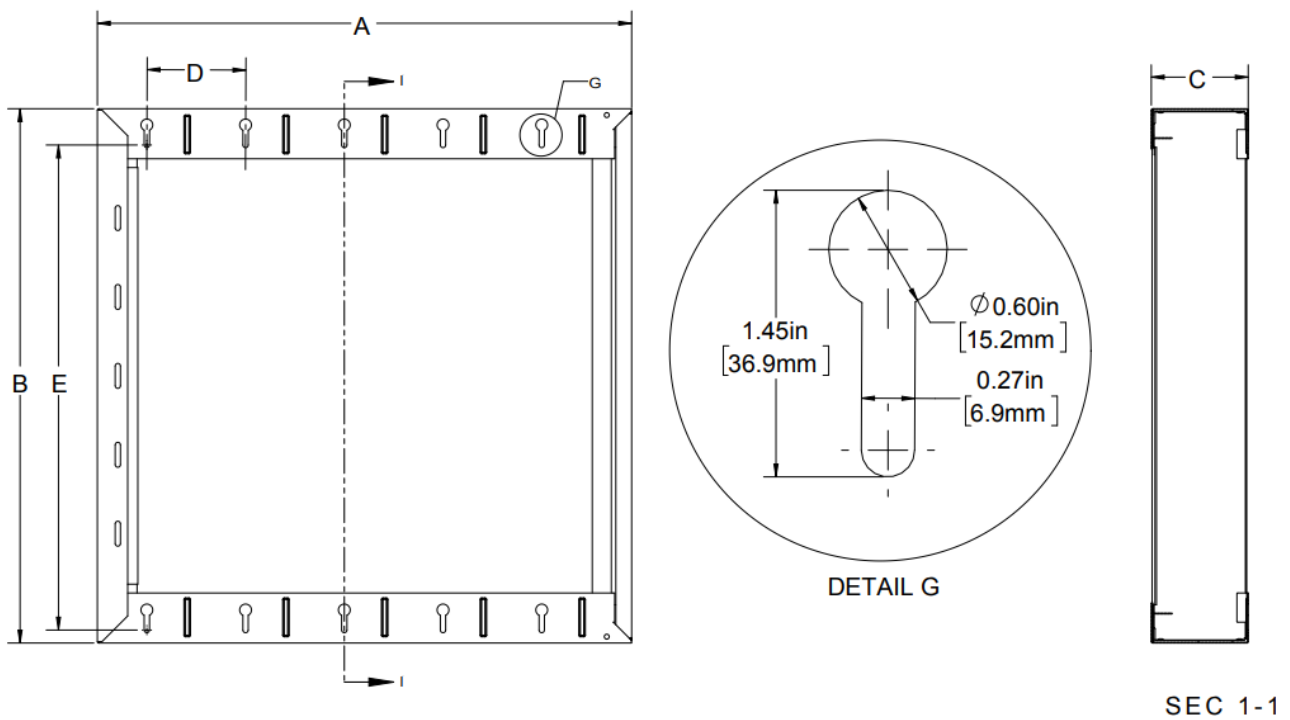
ACCESSORIES	DESCRIPTION CODE	PRODUCT CODE
Drywall Mount Kit 2x2	GESK07	67657
2x2 Surface Mount Kit for Backlit T-Grid Suitable for Lumination tr offers & panels Height = 4.95 Inches (see dimensions section on next page)	B22 SMK	212462
2x2 Flat Panel Surface Mount Kit Suitable for LPL Gen D standar d fixture only. Not compatible with any options or other field installable kits Height = 2.5 Inches (see dimensions section on next page)	PSMK-22	93302544
347V kit	LFAMBADVQFA GEN D	93302219
EMBB kit Provides 90 minutes of emergency lighting	LFAMBA0VQFAEL GEN D	93302218
Wireless Enabled, Daintree® Compatible with Daintree® WFA 10 0 + Emergency Bypass kit (Dual Shunt Relay to be used with building generator backup syst ems to override dimming — Contact manufacturer prior to orderin g to confirm application)	LCAMBA0TSFAB2	93071582

PRODUCT & ACCESSORY DIMENSIONS

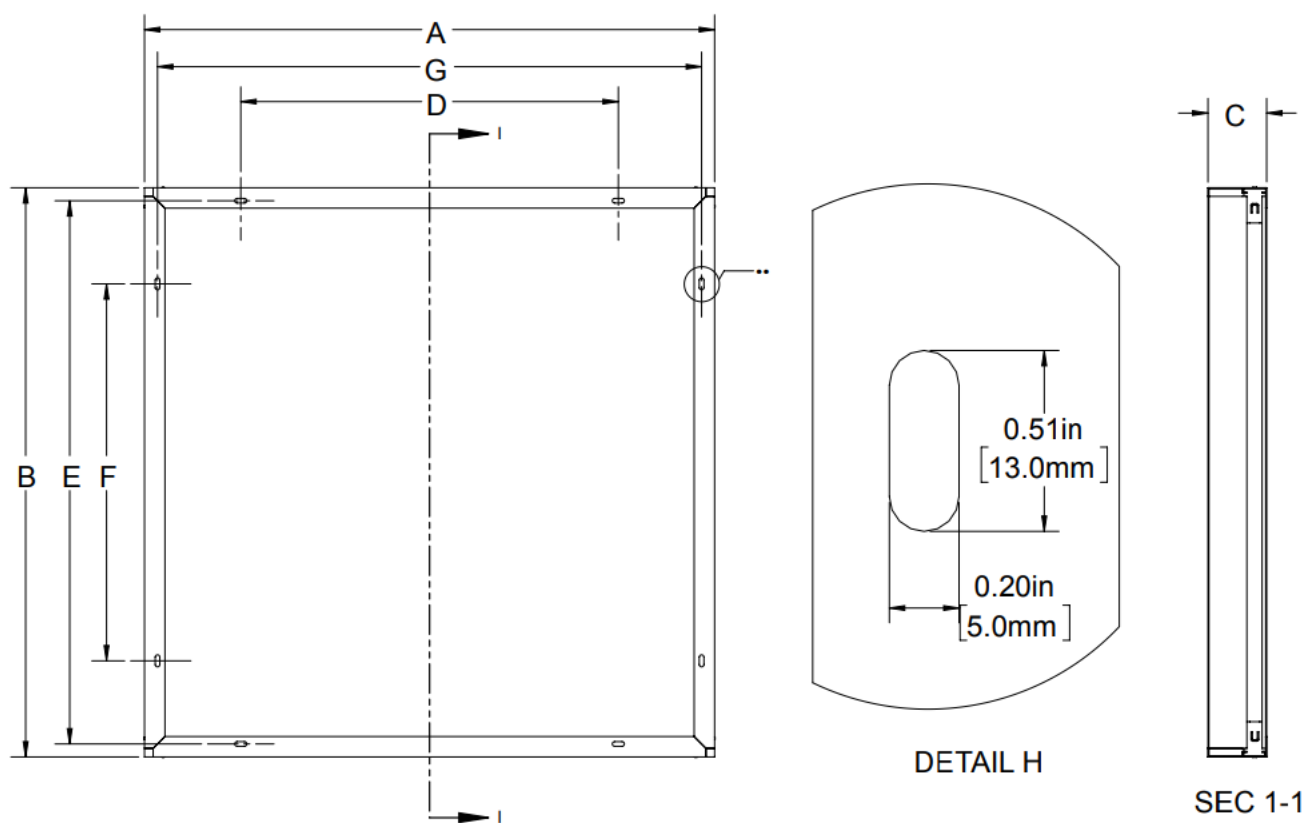


SURFACE MOUNT KIT DIMENSIONS

B22 SMK

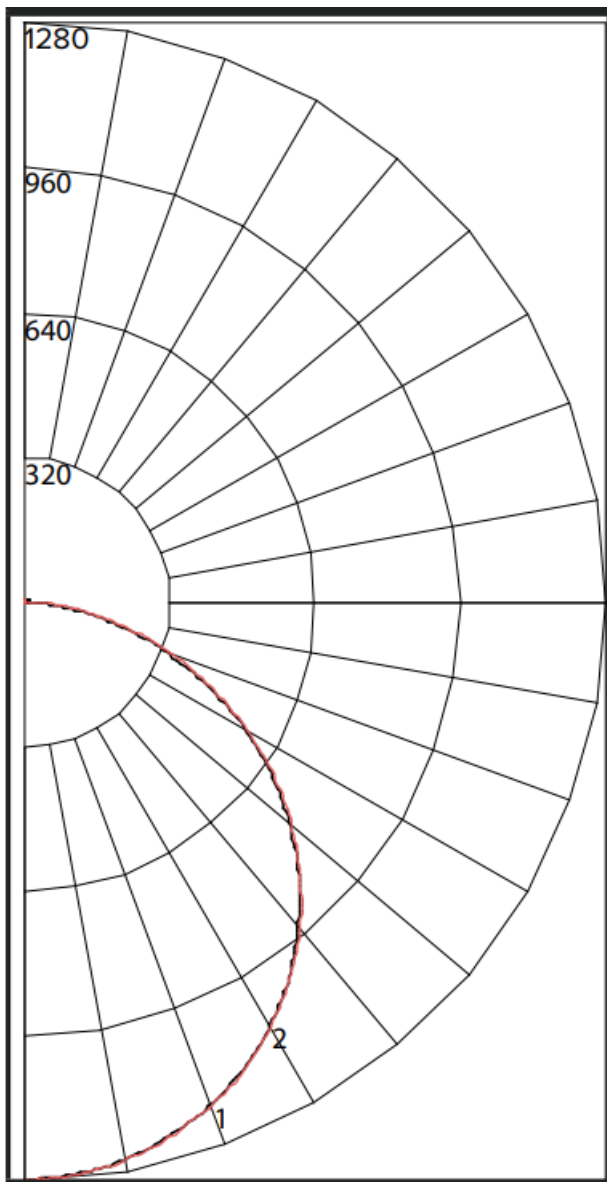


Product Code	Description	A (in)	B (in)	C (in)	D (in)	E (in)	Key Hole Qty Upper/l ower side
212462	B22 SMK	27.08	27.08	4.95	5.0	24.6	5
212463	B24 SMK	27.08	51.08	4.95	5.0	48.6	5



Product Code	Description	A (in)	B (in)	C (in)	D (in)	E (in)	F (in) Between Holes	G (in)
93302543	PSMK-14	12.05	48.0	2.5	1 hole	46.88	16.0 (3 holes)	10.92
93302544	PSMK-22	24.16	24.16	2.5	16.0	23.06	16.0	23.06
93302545	PSMK-24	24.16	48.0	2.5	16.0	46.88	16.0 (3 holes)	23.06

PHOTOMETRICS (3750LM@3500K)



ZONAL LUMEN SUMMARY

Zone	Lumens
0 –10	121.09
10 –20	348.11
20 –30	530.95
30 –40	644.69

40 –50	672.99
50 –60	611.15
60 –70	467.21
70 –80	270.07
80 –90	77.12
90 –100	0.96
100 –110	0.69
110 –120	0.79
120 –130	0.93
130 –140	0.98
140 –150	0.91
150 –160	0.74
160 –170	0.52
170 –180	0.18

DAINTREE CONTROLS

Daintree® Wireless Controls:

There is no one size fits all for wireless controls. Some networks want simple solutions that reduce energy consumption and meet code compliance while others are more ambitious, looking to capitalize on the LED and controls savings to fund a scalable, enterprise-grade, internet of things solution. The advantage of the Daintree® Wireless platform is it's ability to integrate into indoor, outdoor and high bay environments. The Daintree®

Wireless Controls provide the infrastructure to future proof your buildings, easily upgrade to Networked solutions and provide the ability to integrate into IoT solutions that are right for your business.

- Daintree® One: Standalone Wireless Controls
- Daintree® EZ Connect: Room-Based Wireless Lighting Controls
- Daintree® Networked: Networked Lighting Controls for Smart Building & IoT Enablement

Daintree® Wireless Controls are already integrated in your favorite Current LED fixtures. Integrating the controls into the fixture cuts labor costs considerably since the sensors are already embedded in the lighting fixtures. There's no need to get above the ceiling plenum and install additional devices. Visit our website <https://products.gecurrent.com> for a complete list of LED Fixtures.

Every contractor deserves a Fast, Reliable, and Trusted Lighting Partner

Customer Support

www.currentlighting.com

© 2022 Current Lighting Solutions, LLC. All rights reserved. GE and the GE monogram are trademarks of the General Electric Company and are used under license.

Information provided is subject to change without notice. All values are design or typical values when measured under laboratory conditions.

IND586 (Rev 12/26/22) | A-1026549


For Product or Technical Questions:

Email: lightingprodinfo@gecurrent.com




Phone: +1 888 694 3533, option 2



Documents / Resources

	<p>GE current LPL22 Value Series Panel Light Gen D LED Recessed Luminaire [pdf] Owner's Manual</p> <p>LPL22 Value Series, Panel Light Gen D LED Recessed Luminaire, LPL22 Value Series Panel Light Gen D LED Recessed Luminaire, LED Recessed Luminaire, Recessed Luminaire, Luminaire</p>
---	--

References

-  [Commercial Lighting and Lighting Controls | Current - HLI Brands](#)
-  [DLC Qualified Products Lists - DesignLights](#)
-  [Commercial Lighting and Lighting Controls | Current - GLI Brands](#)

