



GE current LED11BG24-V-8SC-120-347 Plug-In Type B LED Lamp Installation Guide

[Home](#) » [GE current](#) » GE current LED11BG24-V-8SC-120-347 Plug-In Type B LED Lamp Installation Guide 

GE current LED11BG24-V-8SC-120-347 Plug-In Type B LED Lamp Installation Guide



BEFORE YOU BEGIN

Read these instructions completely and carefully.

To avoid personal injury and/or product damage, all of the instructions below must be followed.

Ensure that package includes installation guide, caution label to be attached to luminaire, LED lamp. This LED Lamp is intended to retrofit Type IC or non-IC recessed mount Listed fluorescent luminaires. Product is not intended to be used with dimmers or emergency lighting. This lamp operates from 120-347V mains. Do not connect to voltage higher than 347 volts. Do not use with ballast. The provided Caution label should be placed onto the converted luminaire to indicate that the luminaire has been modified and can no longer be used with conventional fluorescent lamps.



WARNING

RISK OF FIRE OR ELECTRIC SHOCK: LED Retrofit Kit installation requires knowledge of luminaire electrical systems. If not qualified, do not attempt installation. Contact a qualified electrician. Install this kit only in luminaires that have the construction features and dimensions shown in the drawings and where the input rating of the retrofit kit does not exceed the input rating of the luminaire. Do not make or alter any open holes in an enclosure of wiring or electrical components during kit installation. To prevent wiring damage or abrasion, do not expose wiring to edges of sheet metal or other sharp objects. Installers should examine all parts that are not intended to be replaced by the retrofit kit for damage and replace any damaged parts prior to installation of the retrofit kit. THE RETROFIT KIT IS ACCEPTED AS A COMPONENT OF A LUMINAIRE WHERE THE SUITABILITY OF THE COMBINATION SHALL BE DETERMINED BY AUTHORITIES HAVING JURISDICTION. PRODUCT MUST BE INSTALLED BY A QUALIFIED ELECTRICIAN IN ACCORDANCE WITH THE APPLICABLE AND APPROPRIATE ELECTRICAL CODES. THE INSTALLATION GUIDE DOES NOT SUPERSEDE LOCAL OR NATIONAL REGULATIONS FOR ELECTRICAL INSTALLATIONS. Installers should not disconnect existing wires from lamp holder terminals, but should cut existing lead wires away from the lamp holder and make new electrical connections to lamp holder lead wires by employing applicable connectors. This lamp operates directly from 120V-347V mains. Do not use Ballast or any starting aid. Do not connect to a voltage higher than 347 volts. Install LED11BG24-V/8SC/120-347 vertically only in a luminaire with a lamp compartment greater than 251 cubic inches, approximately 6 in. diameter x 8 in. deep. Install LED11BG24-H/8SC/120-347 horizontally only in a luminaire with a lamp compartment greater than 307 cubic inches, approximately 8 in. diameter x 6 in. deep.

Contents

[1 Installation Instructions](#)

[2 Documents / Resources](#)

[2.1 References](#)

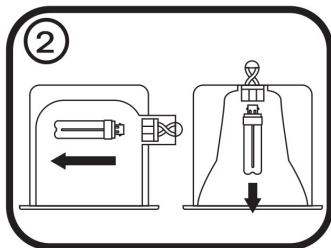
[3 Related Posts](#)

Installation Instructions

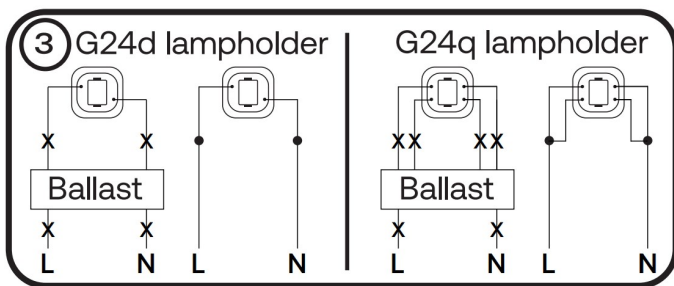
1. Ensure power is off to luminaire by disconnecting the supply voltage.



2. Remove all fluorescent lamps and ballast/wiring area cover.



3. Fully disconnect ballast from mains and lamp holders. Cut the ballast lead wires about 6 inches away from each lamp holder. Connect the black (hot) wire from the mains and white (neutral) wire from the mains to each lamp holder such that the lamp pins are connected as shown above. Replace the ballast / wiring area cover, ensuring no wires are pinched between the cover and the fixture

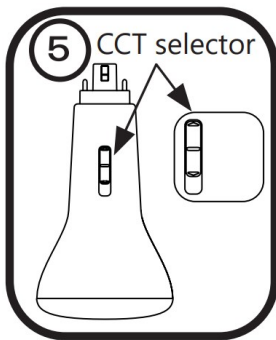


4. Install the retrofit kit Caution label in an easy to see location to ensure the user understands the system now uses Type

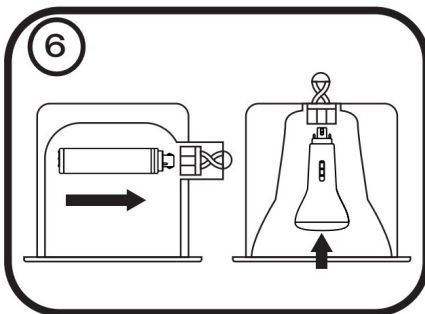
B LED lamps and the use of fluorescent lamps may result in damage or injury.



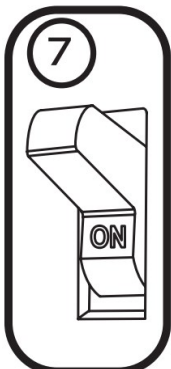
5. Adjust color temperature switch on lamp to desired setting.



6. Install Type B LED lamps.




7. Re-apply power to fixture and ensure proper operation.



800-327-0097.

www.LED.com © 2022 Current Lighting Solutions, LLC. All rights reserved. GE and the GE monogram are trademarks of the General Electric Company and are used under license. Information and specifications subject to change without notice. All values are design or typical values when measured under laboratory conditions.

Documents / Resources

	GE current LED11BG24-V-8SC-120-347 Plug-In Type B LED Lamp [pdf] Installation Guide LED11BG24-V-8SC-120-347 Plug-In Type B LED Lamp, LED11BG24-V-8SC-120-347, Plug-In Type B LED Lamp, Type B LED Lamp, B LED Lamp, LED Lamp, Lamp
---	---

References

- [C Commercial Lighting and Lighting Controls | Current - GLI Brands](#)

[Manuals+](#).