



# GE current IND477 Lumination LED Track Light Installation Guide

[Home](#) » [GE current](#) » GE current IND477 Lumination LED Track Light Installation Guide 

## GE current a Daintree company

Installation Guide  
Lumination® LED Track Light  
Global, Lightolier, and Juno Track Adapter

### Contents

- [1 IMPORTANT SAFETY INSTRUCTIONS](#)
- [2 Fixture Installation](#)
- [3 Documents / Resources](#)
  - [3.1 References](#)
- [4 Related Posts](#)

## IMPORTANT SAFETY INSTRUCTIONS

When installing or using this track system, basic safety precautions should always be followed, including the following:

1. Turn off power at fuse circuit breaker box before installation or before doing any maintenance work.
2. Wear rubber soled shoes and work on a sturdy wooded or non-conductive ladder.
3. Product must be mounted in location and at height in a manner consistent with its intended use, and in compliance with National Electrical Code and local building codes.
4. For Indoor use only.
5. Do not exceed the nominal supply voltage or amperage ratings.

6. Do not install any lamp holder closer than 6".
7. **WARNING:** Risk of fire. Most dwellings built before 1985 have supply wire rated at 60°C. Consult a qualified electrician before installation.
8. **CAUTION:** To reduce risk of fire and electrical shock, use only fixtures and fittings intended for use with the single or 2-circuit, 120V systems.
9. The track and all components are rated for 120V, 20A capacity. (2400W max)
10. Do not exceed the nominal supply voltage or amperage rating.
11. To avoid hazard to children, account for all parts and properly dispose of all packing materials.
12. Read all instructions
13. Do not install this track in damp or wet locations.
14. Do not cut any track sections.
15. Do not install any part of a track system less than 5 feet above the floor.
16. Do not install any luminaire assembly closer than 6 inches from any curtain, or similar combustible material.
17. Disconnect electrical power before adding to or changing the configuration of the track.
18. Do not attempt to energize anything other than lighting track luminaires on the track. To reduce the risk of fire and electric shock, do not attempt to connect power tools, extension cords, appliances, and the like to the track.
19. Do not connect a track to more than one branch circuit unless the track is constructed so that it can be used with more than one branch circuit. Check with a qualified electrician. Although the track lighting system may seem to operate acceptably, a dangerous overload of the neutral may occur and result in a risk of fire.

### **SAVE THESE INSTRUCTIONS**

For future reference when adding fixtures or changing the track configuration.



### **BEFORE YOU BEGIN**

Read these instructions completely and carefully.

FOR USE WITH CEILING-MOUNTED TRACK ONLY. READ TRACK MANUFACTURER'S INSTALLATION INSTRUCTIONS FOR GUIDELINES ON TRACK INSTALLATION.



### **WARNING**

#### **RISK OF ELECTRIC SHOCK**

Turn power off before inspection, installation or removal.



### **CAUTION**

To reduce risk of fire and electric shock, refer to track luminaire markings for system compatibility and use only with the following:

Global: GES series track system

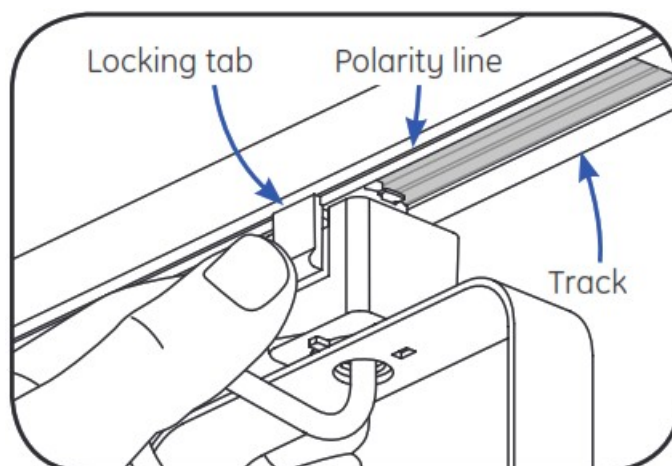
Lightolier: Lytespan Series

Juno: R, T, or TU track systems

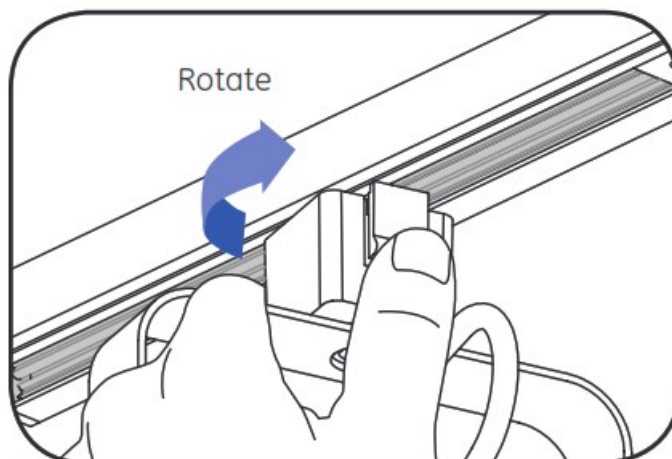
Fixture intended for commercial use only. Use only in non-insulated applications.

### **Fixture Installation**

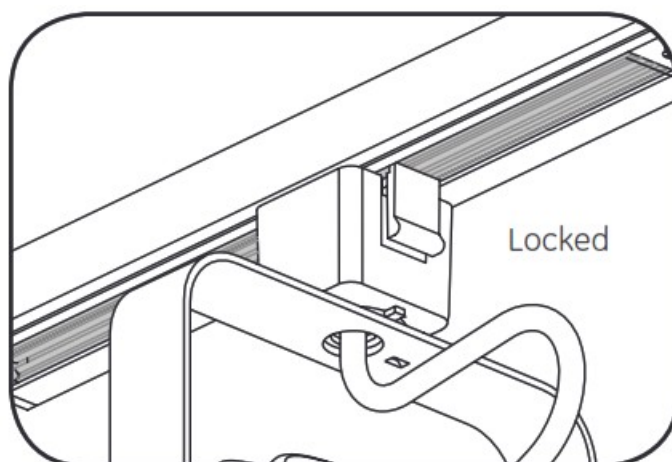
## Global Track



1. Hold the adapter below the track with your thumb on the locking tab. Make sure the locking tab is positioned directly below the polarity line. Push adapter into track.

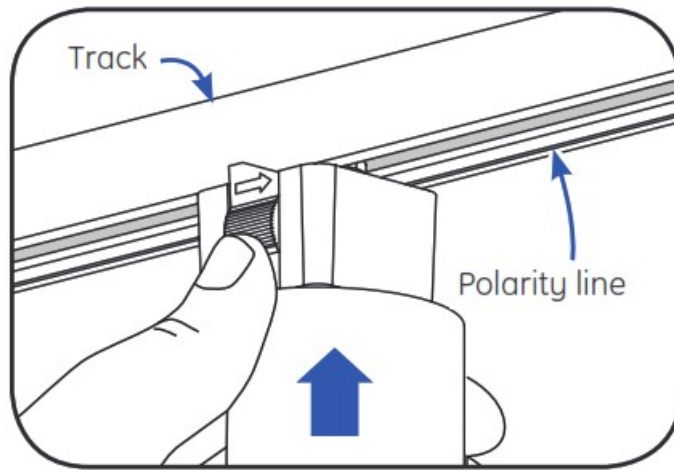


2. Rotate adapter 90 degrees clockwise, making sure the polarity lines match between the track and the fixture adapter.

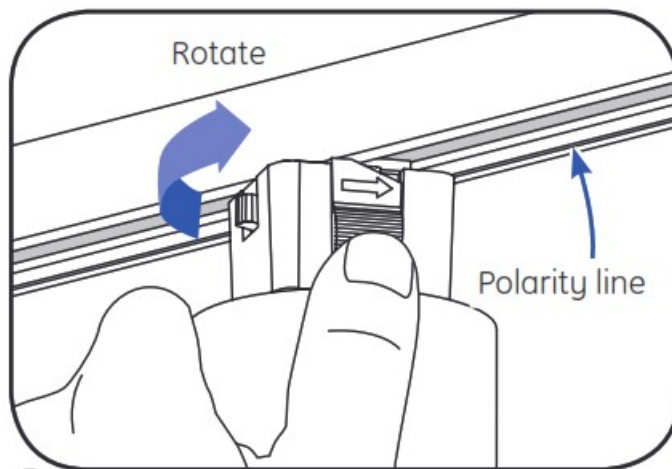


3. Release the locking tab and the fixture should snap into position.

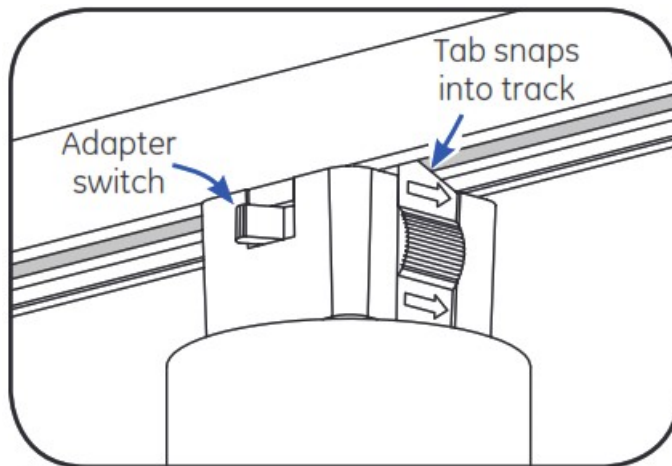
## Lightolier Track



1. Hold the adapter below the track with your thumb on the locking tab. Make sure the locking tab is positioned directly below the polarity line. Push adapter into track.



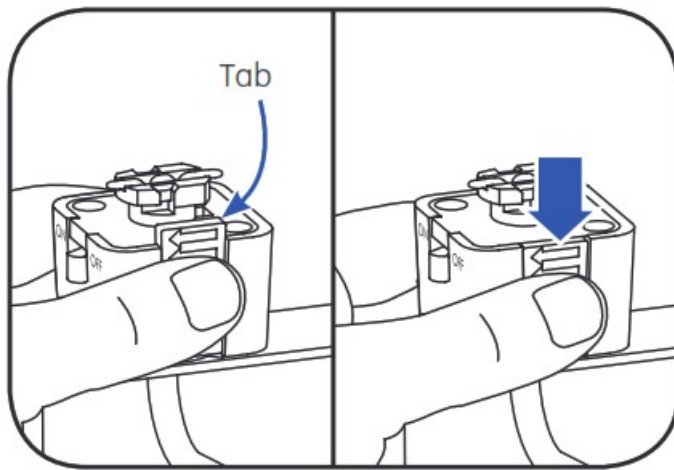
2. Rotate adapter 1/4 turn (90°) counter-clockwise.



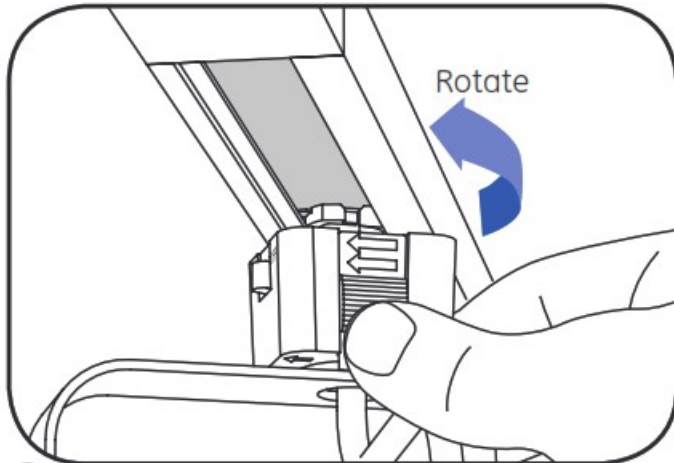
3. Release the locking tab and the fixture should snap into position. Turn the fixture on by the switch.

## Juno Track

- 1.

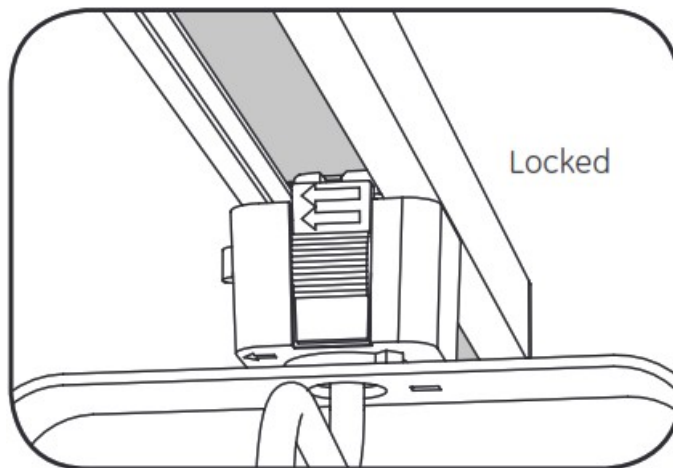


Pull tab down.



2. Insert adapter into track and rotate clockwise 90 degrees until arrows on tab point to polarity line on track.

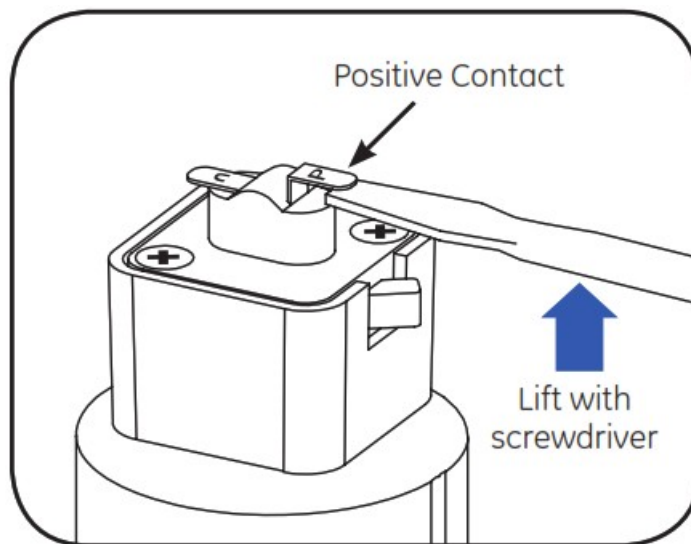
**NOTE:** Forcing the adapter to rotate anti-clockwise may damage and prevent fixture from turning on.



3. Release the locking tab and the fixture should snap into position.

## Two Circuit Track

1.



For Two Circuit installation, the “Positive Contact” (marked “P”) must be in raised position, opposite of the “U”-marked contact. Raise “Positive Contact” by inserting a thin screwdriver under the contact and lifting upward.

2. To attach fixture to Track, proceed the same as with “Single Circuit Track” attachment.

This device complies with Part 15 of the FCC Rules. Operation is subject to the following two conditions: (1) This device may not cause harmful interference, and (2) this device must accept any interference received, including interference that may cause undesired operation. CAN ICES-005 (A) /NMB-005 (A)

**Note:** This equipment has been tested and found to comply with the limits for a Class A digital device, pursuant to part 15 of the FCC Rules. These limits are designed to provide reasonable protection against harmful interference when the equipment is operated in a commercial environment. This equipment generates, uses, and can radiate radio frequency energy and, if not installed and used in accordance with the instruction manual, may cause harmful interference to radio communications. Operation of this equipment in a residential area is likely to cause harmful interference in which case the user will be required to correct the interference at his own expense.

# GE current

a Daintree company

All trademarks are the property of their respective owners. Information provided is subject to change without notice. All values are design or typical values when measured under laboratory conditions. Current, powered by GE is a business of the General Electric Company. © 2019 GE.

Fixture intended for commercial use only. Use only in non-insulated applications.

[www.LED.com](http://www.LED.com)

IND477-ENG (Rev 09/17/19) GE2033-0242

## Documents / Resources

	<p><a href="#">GE current IND477 Lumination LED Track Light</a> [pdf] Installation Guide IND477, Lumination LED Track Light, LED Track Light, Lumination Track Light, Track Light, Light</p>
--	--

## References

- [C Commercial Lighting and Lighting Controls | Current - GLI Brands](#)

Manuals+.