



GE current GERLB2465 Select TX Rigid Light Bar Installation Guide

[Home](#) » [GE current](#) » GE current GERLB2465 Select TX Rigid Light Bar Installation Guide 

Contents

- [1 GE current GERLB2465 Select TX Rigid Light Bar](#)
- [2 Installation Guide](#)
- [3 Maximum number of Light Bars in Series](#)
- [4 Documents / Resources](#)
- [5 Related Posts](#)



GE current GERLB2465 Select TX Rigid Light Bar



Read these instructions completely and carefully. Save these instructions for future use.

WARNING

- **RISK OF ELECTRIC SHOCK**
Turn power off before inspection, installation or removal
- **RISK OF FIRE**
 - Follow all IEC and local building codes
 - Use only IEC approved wire for input/output connections. Minimum size 18 AWG (0.75 mm²).
 - The LED luminaire must be connected to the mains supply according to its ratings on the product label.
 - The light source of this luminaire is not replaceable; when the light source reaches its end of life the whole luminaire shall be replaced.

CAUTION

- Do not operate the product with damaged parts.
- Product may fall down if not installed properly.
- For indoor use only.
- Environmental suitability (dry location)
- To ensure the product warranty is valid, please ensure all installation instructions and environmental conditions for storage and operation are complied with.

Installation Guide

- Rigid Light Bar
- 24V LED Power supply
- SA2-01 connector
- M3 self-tapping screw
- Electric drill



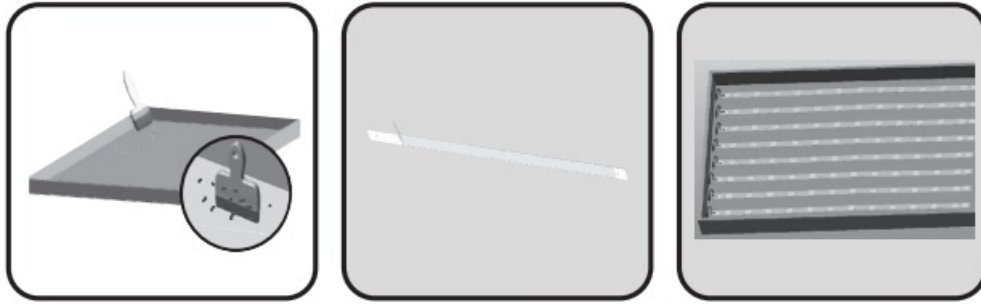
| Model number | Rated Power (W) | Input Voltage (V) |
|------------------|--------------------|----------------------|
| GERLB2465-1120-1 | 6.3 | 24VDC |
| GERLB2465-0560-1 | 3.1 | |
| GERLB2465-0240-1 | 3.1 | |

Power supply rating:

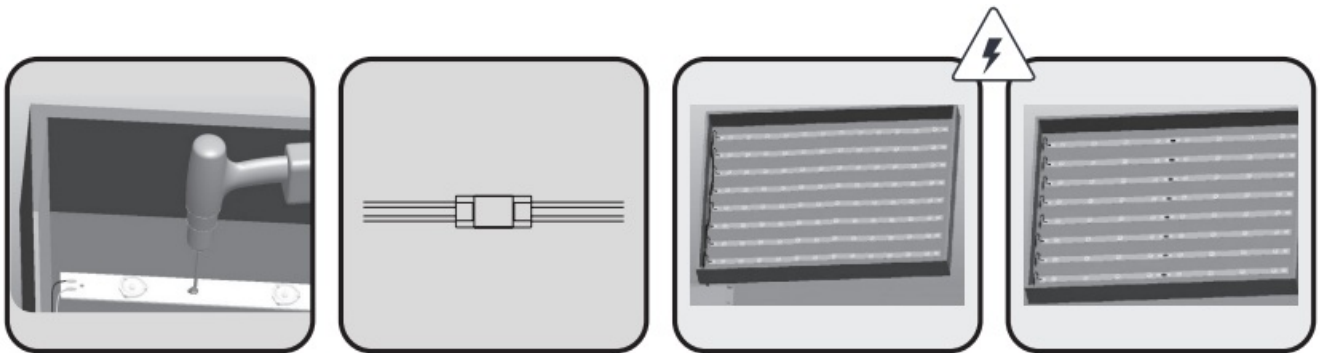
Input: 100V-240V, 50Hz/60Hz Output: 24V DC, 6.3 A

- Clean the mounting surface
- Peel off the release paper from the back

- Distribute the rigid bars in the light box according to proper spacing. Be careful not to damage lens, LEDs and electronic components of the rigid bar.



- Screw to fix the bar
- Connect the SA2-01 connector.
- Connect the main line of rigid bar to the 24V power supply.
- If the bar need to be joint-ed, please arrange it as the picture shows.

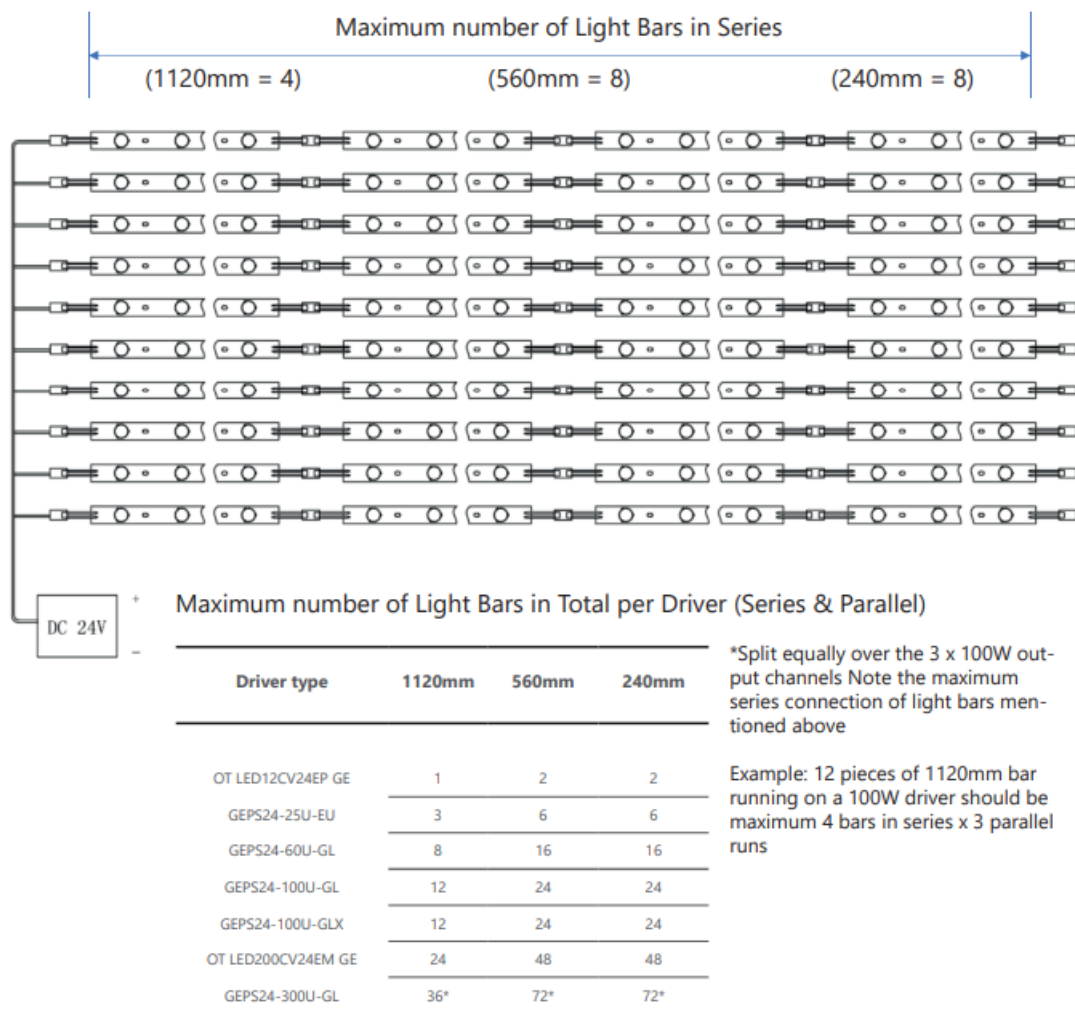


This device complies with part 15 of the FCC Rules. Operation is subject to the following two conditions: (1) This device may not cause harmful interference, and (2) this device must accept any interference received, including interference that may cause undesired operation.

CAN ICES-005 (A) / NMB-005 (A)

Note: This equipment has been tested and found to comply with the limits for a Class A digital device, pursuant to part 15 of the FCC Rules. These limits are designed to provide reasonable protection against harmful interference when the equipment is operated in a commercial environment. This equipment generates, uses, and can radiate radio frequency energy and, if not installed and used in accordance with the instruction manual, may cause harmful interference to radio communications. Operation of this equipment in a residential area is likely to cause harmful interference in which case the user will be required to correct the interference at his own expense.

Maximum number of Light Bars in Series



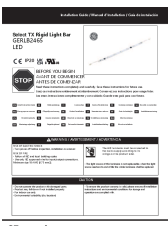
This device complies with Part 15 of the FCC Rules. Operation is subject to the following two conditions: (1) This device may not cause harmful interference, and (2) this device must accept any interference received, including interference that may cause undesired operation. This Class [A] RFLD complies with the Canadian standard ICES-005. Ce DEFR de la classe [A] est conforme à la NMB-005 du Canada.

Note: This equipment has been tested and found to comply with the limits for a Class A digital device, pursuant to part 15 of the FCC Rules. These limits are designed to provide reasonable protection against harmful interference when the equipment is operated in a commercial environment. This equipment generates, uses, and can radiate radio frequency energy and, if not installed and used in accordance with the instruction manual, may cause harmful interference to radio communications. Operation of this equipment in a residential area is likely to cause harmful interference in which case the user will be required to correct the interference at his own expense.

These instructions do not purport to cover all details or variations in equipment nor to provide for every possible contingency to be met in connection with installation, operation or maintenance. Should further information be desired or should particular problems arise which are not covered sufficiently for the purchaser's purposes, the matter should be referred to GE.

© 2020 Current Lighting Solutions, LLC. All rights reserved. GE and the GE monogram are trademarks of the General Electric Company and are used under license. Information provided is subject to change without notice. All values are design or typical values when measured under laboratory conditions. © 2020 Current Lighting Solutions, © 2020 Current Lighting Solutions, LLC. All rights reserved. GE and the GE monogram are trademarks of the General Electric Company and are used under license. Information provided is subject to change without notice. All values are design or typical values when measured under laboratory conditions. © 2020 Current Lighting Solutions, Todos los derechos reservados. GE y el monograma de GE son marcas registradas de la General Electric Company y se utilizan bajo licencia. La información proporcionada está sujeta a cambios sin previo aviso. Todos los valores son de diseño o valores típicos cuando se miden en condiciones de laboratorio.

Documents / Resources



[GE current GERLB2465 Select TX Rigid Light Bar \[pdf\]](#) Installation Guide
GERLB2465, Select TX Rigid Light Bar, GERLB2465 Select TX Rigid Light Bar, Rigid Light Bar, Light Bar, Bar