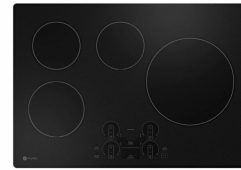


GE APPLIANCES PHP7030DTBB 30 Inch Built In Touch Control Induction Cooktop



GE APPLIANCES PHP7030DTBB 30 Inch Built In Touch Control Induction Cooktop Instruction Manual

[Home](#) » [GE Appliances](#) » GE APPLIANCES PHP7030DTBB 30 Inch Built In Touch Control Induction Cooktop Instruction Manual 



GE APPLIANCES PHP7030DTBB 30 Inch Built In Touch Control Induction Cooktop



DIMENSIONS AND INSTALLATION INFORMATION (IN INCHES)

IMPORTANT: Requires a 3" free area between the bottom of the cooktop to any combustible material, i.e., shelving. Free area not required when installing wall oven underneath cooktop. Refer to installation instructions. Requires a 15" minimum from cooktop to adjacent overhead cabinets. Units are furnished with a 48" flexible armored cable.

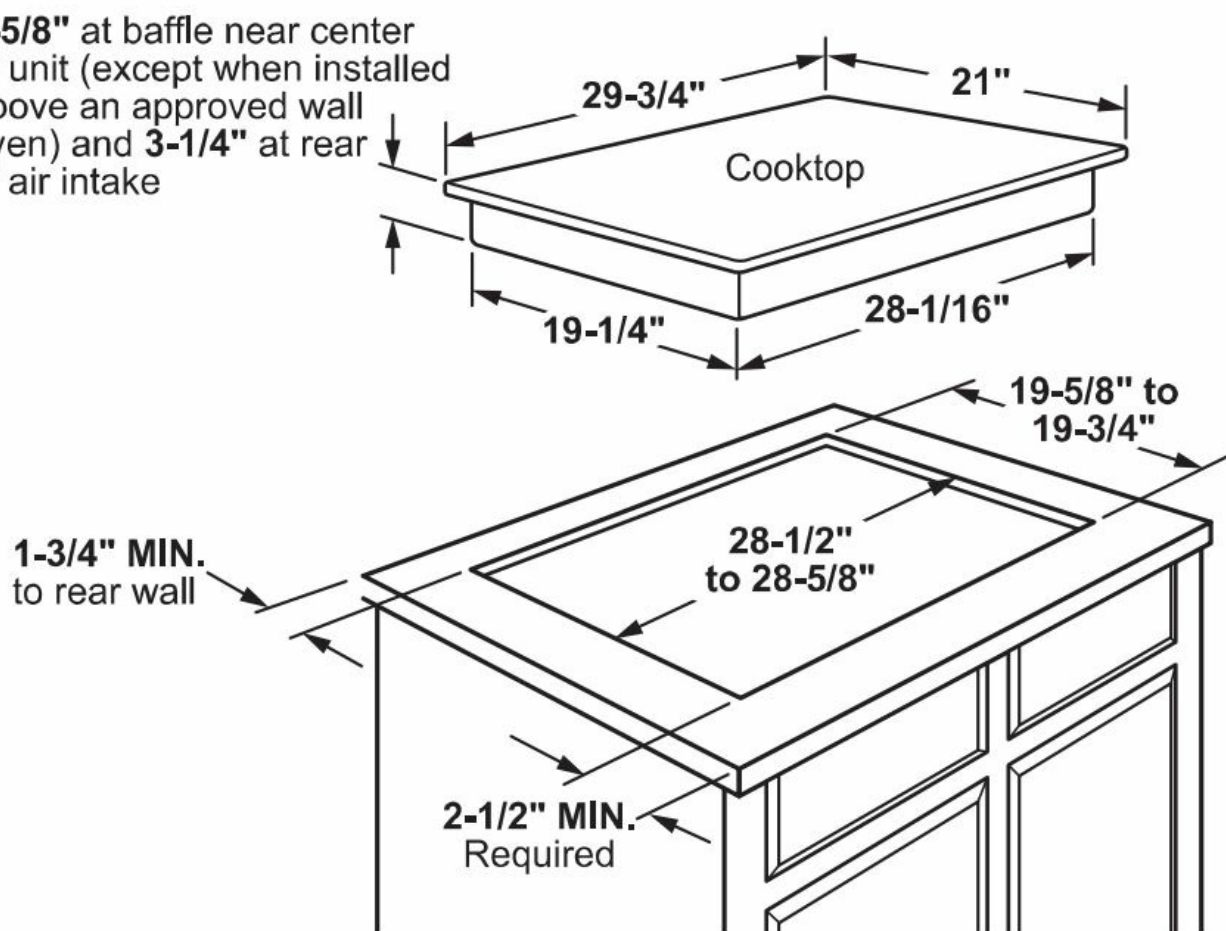
NOTE: 30" induction cooktops are approved for use over select GE 27" and GE 30" Single Wall Ovens and Warming Drawers. Refer to cooktop and wall oven/warming drawer installation instructions packed with product for current dimensional data. If installed with a GE Telescopic Downdraft System, consult both the cooktop and downdraft installation instructions packed with the product before installing. The cooktop gas/electric supply may need to be re-routed to install downdraft. The countertop cutout requires 23-1/2" minimum flat countertop surface and 25" minimum total countertop depth.

In addition, other clearances to front edge of the countertop must be considered. Before installing, consult installation instructions packed with product for current dimensional data.

CUTOUT FILLER TRIM KIT: A filler trim kit is available for use if your countertop cutout is larger than the dimension shown, up to 29-13/16" x 20-7/16". Order JXTR32B for black or JXTR32W for white, to reduce the cutout opening for installation of this cooktop. These kits may be ordered from your GE Appliances Dealer.

APPROXIMATE COOKING DIMENSIONS

4-5/8" at baffle near center of unit (except when installed above an approved wall oven) and 3-1/4" at rear of air intake



To insure accuracy, it is best to make a template when cutting the opening in the counter

13" MAX. depth of unprotected overhead cabinets

2" MIN. Clearance from cutout to nearest vertical wall or cabinet on right side of the unit below the 15" MIN. clearance height.

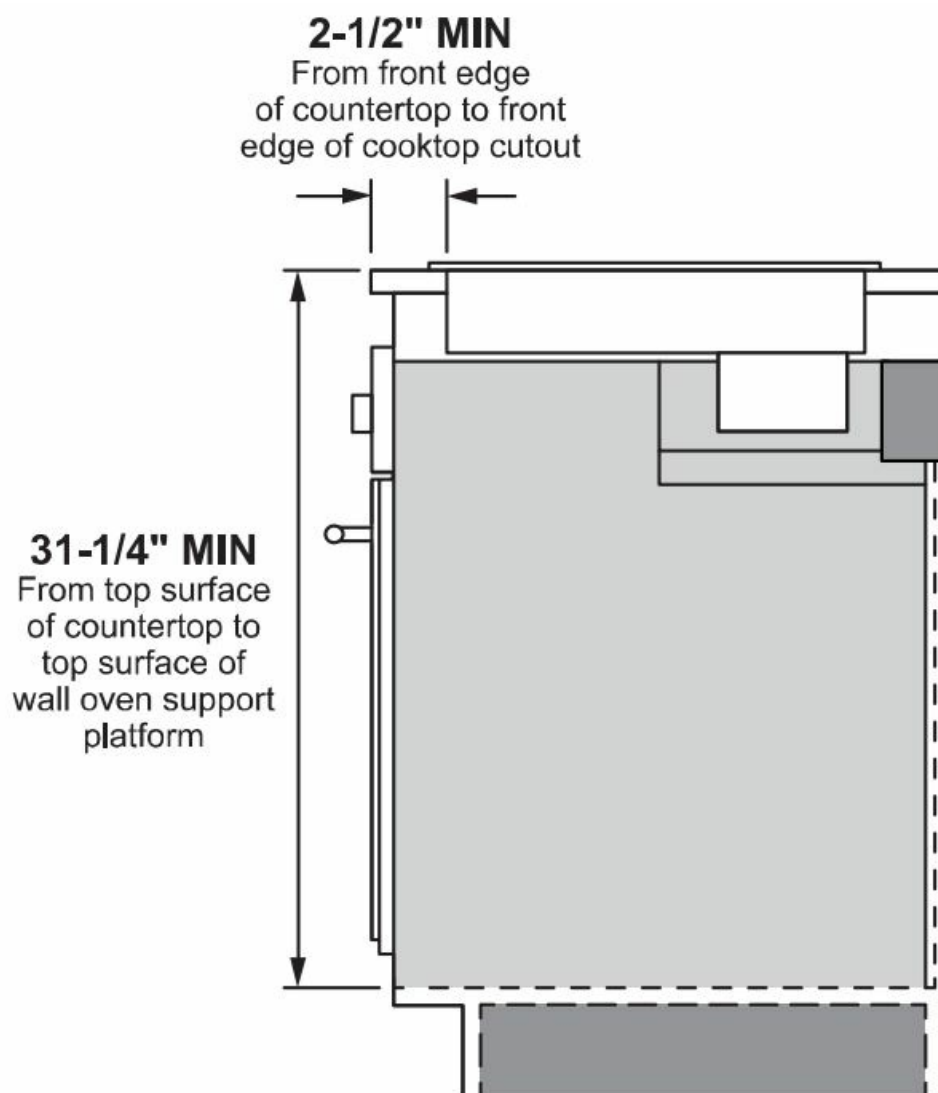
30" MIN. Clearance from countertop to unprotected overhead surface

See label next to nameplate for MIN. clearance to rear wall.

2" MIN. clearance to side wall from cut-out on the left of the unit

15" MIN. height from countertop to nearest cabinet (including light rails) on both sides of cooktop

INSTALLATION ABOVE A WALL OVEN



For answers to your Monogram, GE Café™, GE Profile™ or GE Appliances product questions, visit our website at geappliances.com or call GE Answer Center's Service, 800.626.2000.

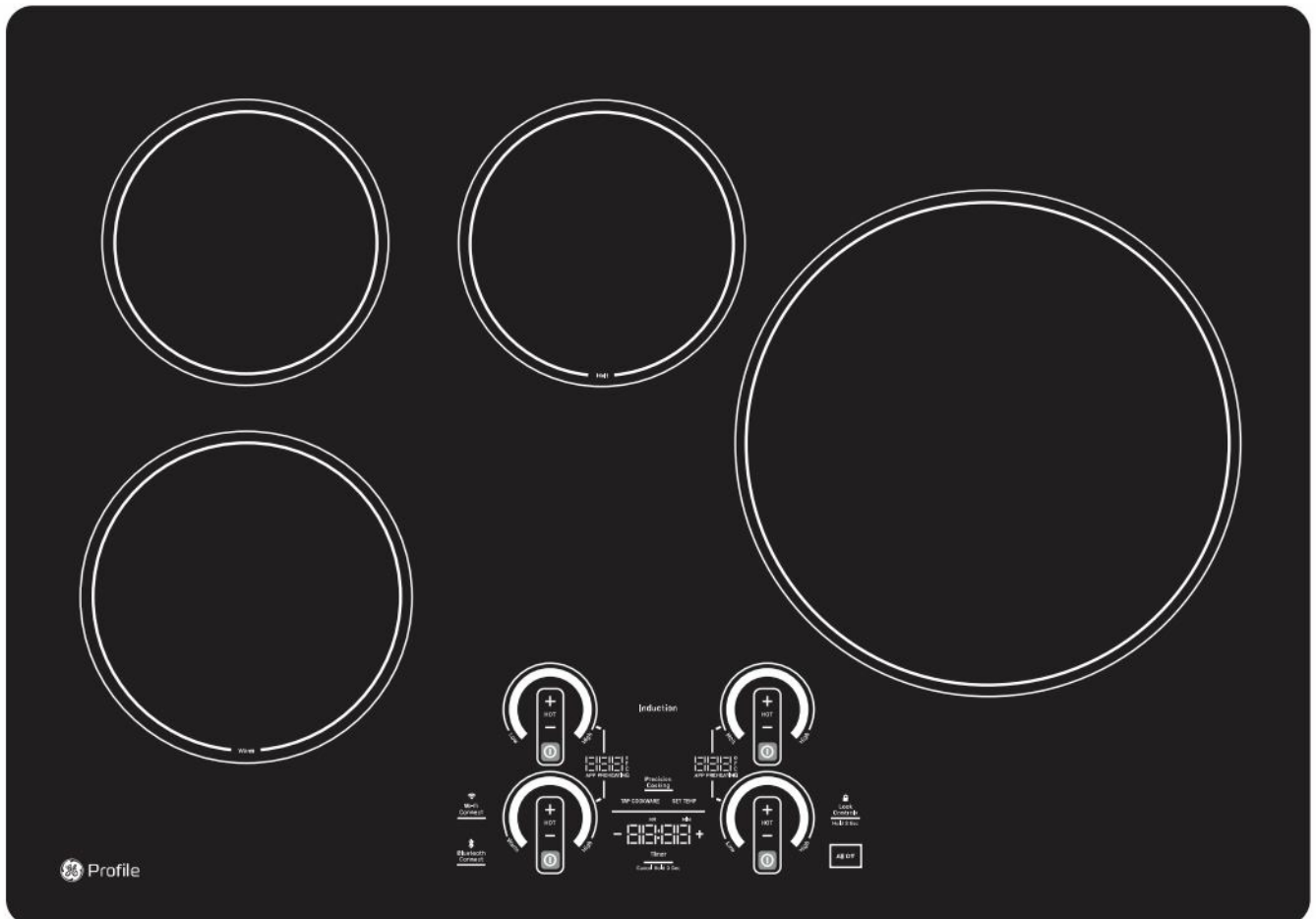
Voltage	kW Rating	Amperage
240V	7.7	40 Amps
208V	6.9	40 Amps

***NOTE:** Check local codes for required breaker size.

FEATURES AND BENEFITS

- Maximum Responsiveness – 11 Control Levels
- Power Boil
- Precision Temperature Control
- Guided Cooking
- Easy Clean Surface
- Safe Surface
- Most Efficient Heating
- Synchronized Elements

- Chef Connect
- Compatible Cooktop with Smart
- Timer
- Built-in WiFi
- Control Lock
- Fit Guarantee
- Model PHP7030DTBB – Black on black



1. COMPATIBLE COOKTOP WITH SMART COOKWARE

Smart pans easily pair with this smart cooktop to ensure you get the perfect cooking results. Accessories sold separately.

2. OPTIONAL SOUS VIDE PROBE

A Sous Vide Probe lets you achieve great results on the stove. Order part number JXPROBE.

3. OPTIONAL FILLER TRIM KIT

Fill in any countertop gaps with this filler trim kit.


Order part number JXTR32B.

4. GUARANTEED FIT

Replacing a similar cooktop from GE Appliances or another brand? GE cooktops are guaranteed for an exact fit or GE Appliances will pay up to \$100 toward modifications.

Visit [geappliances.com](https://www.geappliances.com) for more info.

Documents / Resources

	GE APPLIANCES PHP7030DTBB 30 Inch Built In Touch Control Induction Cooktop [pdf] Instruction Manual PHP7030DTBB, PHP7030DTBB 30 Inch Built In Touch Control Induction Cooktop, 30 Inch Built In Touch Control Induction Cooktop, Built In Touch Control Induction Cooktop, Touch Control Induction Cooktop, Control Induction Cooktop, Induction Cooktop, Cooktop
---	--

References

- [User Manual](#)

[Manuals+](#), [Privacy Policy](#)

This website is an independent publication and is neither affiliated with nor endorsed by any of the trademark owners. The "Bluetooth®" word mark and logos are registered trademarks owned by Bluetooth SIG, Inc. The "Wi-Fi®" word mark and logos are registered trademarks owned by the Wi-Fi Alliance. Any use of these marks on this website does not imply any affiliation with or endorsement.