



GC Audio RE 73 Inherit Cartridge Instructions

[Home](#) » [GC Audio](#) » GC Audio RE 73 Inherit Cartridge Instructions 

GC Audio RE 73 Inherit Cartridge Instructions



Thank you for purchasing the RE 73 Inherit Cartridge. We hope you have as much fun using it as we had designing it !

The RE73 cartridge is a reissue of preamplifier came out of famous British mixer desk of 70's. Many improvements have been made to achieve best features

- Ultra Low noise transistor.
- Great care on PCB Routing.
- Transformer VTB9045 High End shield version
- Digital gain control

We recommend it for sound engineer looking for very punch and coloration recording.

Contents

- [1 Technical Data :](#)
- [2 Documents / Resources](#)
- [2.1 References](#)
- [3 Related Posts](#)

Technical Data :

PAD = -20dB.

Input impedance = 1.2K Ohms.

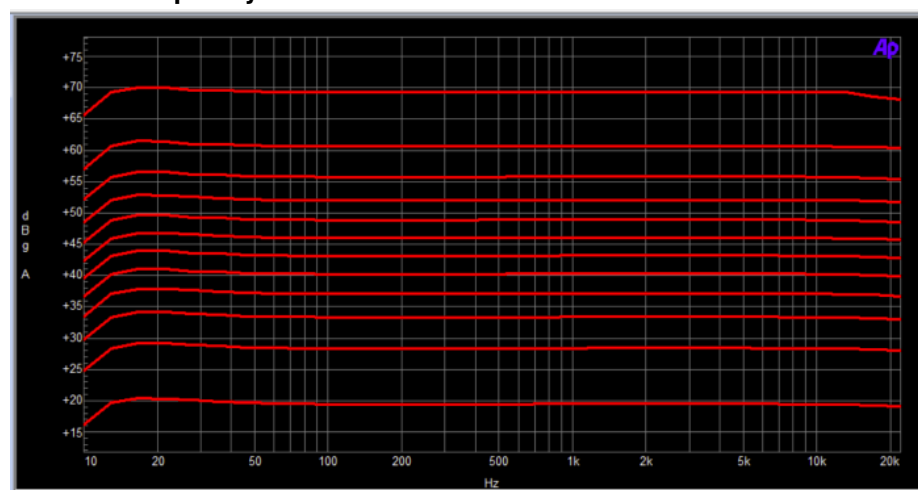
EIN (150 Ohms source at 65 dB – 20/22Khz) = 125 dB.

THD + N = 0.05%.

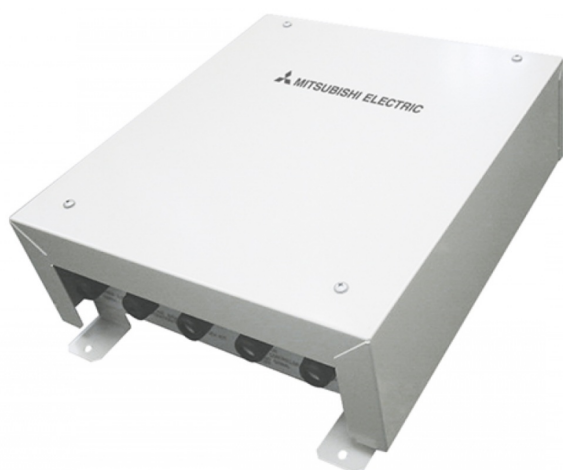
Gain Step :

1) 22dB	7) 52dB
2) 27dB	8) 57dB
3) 32dB	9) 62dB
4) 37dB	10) 67dB
5) 42dB	11) 72dB
6) 57dB	12) 77dB

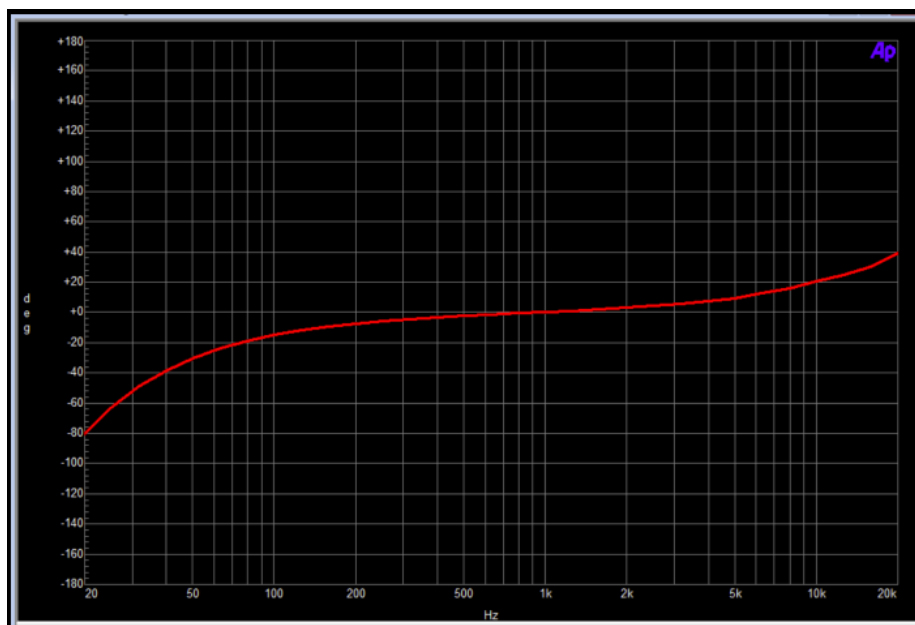
Gain VS Frequency :



THD VS Frequency :




Phase



Copyright GC Audio 2022



Documents / Resources

	<p>GC Audio RE 73 Inherit Cartridge [pdf] Instructions RE 73, RE 73 Inherit Cartridge, Inherit Cartridge, Cartridge</p>
---	---

References

- [User Manual](#)