



GBC Inspire Plus A4 and A3 Laminator User Guide

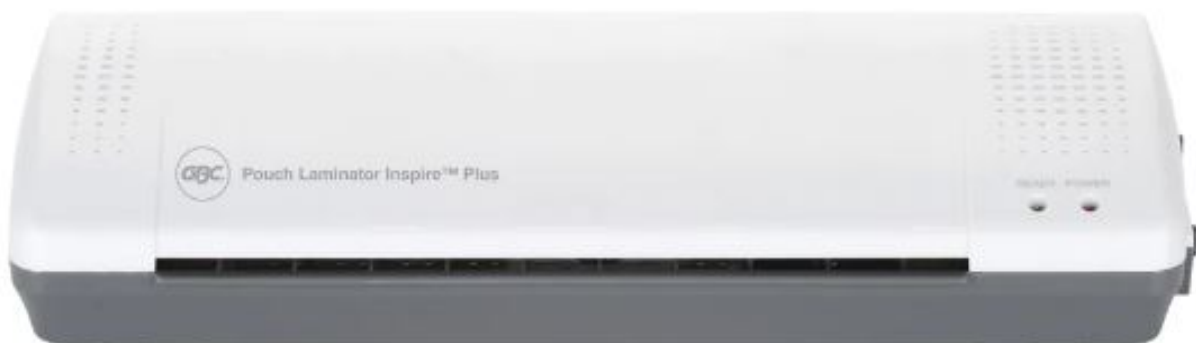
[Home](#) » [GBC](#) » GBC Inspire Plus A4 and A3 Laminator User Guide 

Contents

- [1 GBC Inspire Plus A4 and A3 Laminator](#)
- [2 Product Information](#)
- [3 Product Usage Instructions](#)
- [4 INSTALLATION](#)
- [5 Please read and keep these important safety instructions](#)
- [6 Cleaning](#)
- [7 Guarantee](#)
- [8 Service](#)
- [9 CONTACT](#)
- [10 Documents / Resources](#)
 - [10.1 References](#)



GBC Inspire Plus A4 and A3 Laminator



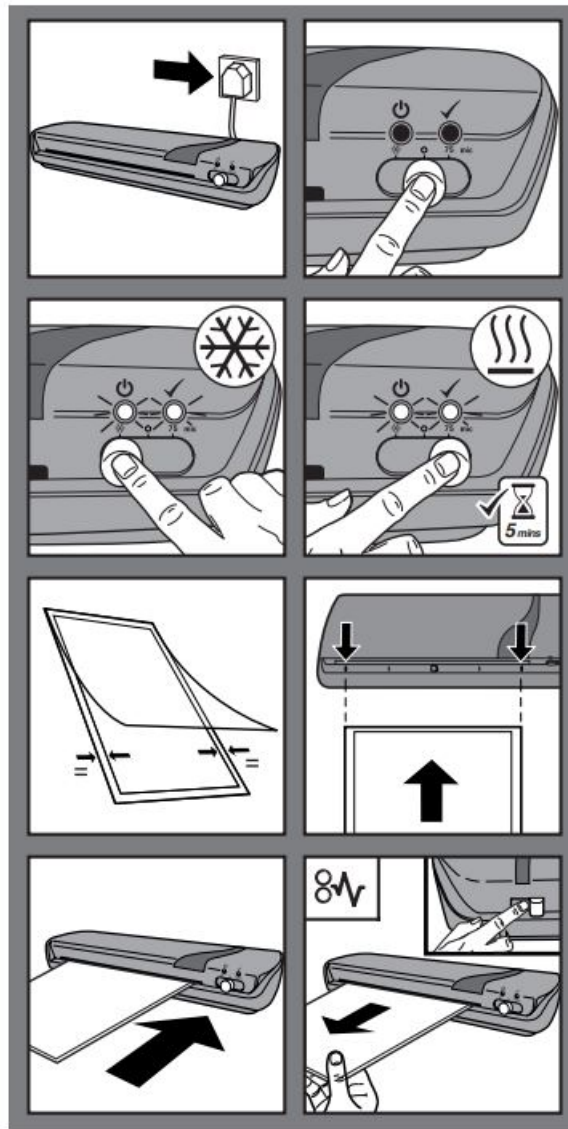
Product Information

The INSPIRE+ A4&A3 Laminator is a versatile laminating machine designed for both A4 and A3 paper sizes.

Product Usage Instructions

- **Cleaning:** Before cleaning the exterior of the laminator, ensure that it is unplugged. Only use a damp cloth to wipe the exterior; do not use detergents or solvents. To clean the rollers, regularly feed a cleaning card or sheet of paper through the laminator. You can order the cleaning sheet with the code EK50000.
- **Service:** For service and technical support, refer to the contact details of your local service representative provided at the back page of the user manual.
- **Indoor Use:** The laminator should only be used in indoor areas.
- **Waste Electrical and Electronic Equipment (WEEE):** At the end of its useful life, the laminator is considered WEEE. Do not dispose of it as unsorted municipal waste. Instead, it should be collected separately for recycling, re-use, and recovery of components and materials. Public collection points have been set up by municipalities for the collection of WEEE free of charge. Please return your WEEE to the collection facility nearest your home or office. If you have difficulty locating a collection facility, you can contact ACCO for assistance. Recycling WEEE helps protect the environment, human health, and raw materials, as well as promote sustainable development in the European Union.
- **Guarantee:** The laminator comes with a guarantee. Refer to the warranty section of the user manual for details.

INSTALLATION



Please read and keep these important safety instructions

- Only use the unit for its intended purpose.
- Do not touch the heating plate of this unit as it may be hot.
- The unit must only be connected to a supply voltage corresponding to the electrical rating shown on the unit.
- The unit should be connected to a socket outlet near the equipment that is easily accessible.
- Do not connect to multi adaptors or use an extension cable.
- Failure to follow these instructions could result in damage/injury and will invalidate your guarantee.
- Do not attempt to service or repair the unit yourself.
- In the event of a fault, unplug the unit and contact an authorized GBC service representative for any required repairs.
- Do not use this unit if the cable or plug has been damaged.

Cleaning

WARNING: UNPLUG THIS PRODUCT BEFORE

- **CLEANING THE EXTERIOR.** WIPE EXTERIOR ONLY WITH A DAMP CLOTH AND DO NOT USE DETERGENTS OR SOLVENTS. Regularly feed a cleaning card or sheet of paper through the laminator to clean the rollers. Cleaning sheet order code: EK50000.

Waste Electrical and Electronic Equipment (WEEE)

At the end of its useful life, your product is considered to be WEEE. As such, it is important to note that: WEEE is not to be disposed of as unsorted municipal waste. It is to be collected separately such that it can be disassembled so its components and materials can be recycled, re-used, and recovered (burned for energy content in the production of electricity). Public collection points have been set up by municipalities for the collection of WEEE, free of charge to you. Please return your WEEE to the collection facility nearest your home or office. If you have difficulty locating a collection facility, the retailer that sold you the product should accept your WEEE. If you are no longer in contact with your retailer, please contact ACCO for assistance with this matter. Recycling of WEEE is geared toward protecting the environment, protecting human health, preserving raw materials, improving sustainable development, and ensuring a better supply of commodities in the European Union. This will be achieved by retrieving valuable secondary raw materials and reducing the disposal of waste. You can contribute to the success of these goals by returning your WEEE to a collection facility. Your product is marked with the WEEE symbol (wheelie bin with an X through it). This symbol is to inform you that the WEEE is not to be disposed of as unsorted municipal waste.

Guarantee

Operation of this machine is guaranteed for one year from date of purchase, subject to normal use. Within the guarantee period, ACCO Brands Europe will at its own discretion either repair or replace the defective machine free of charge. Defects due to misuse or use for inappropriate purposes are not covered under the guarantee. Proof of date of purchase will be required. Repairs or alterations made by persons not authorised by ACCO Brands Europe will invalidate the guarantee. It is our aim to ensure that our products perform to the specifications stated. This guarantee does not affect the legal rights which consumers have under applicable national legislation governing the sale of goods.


Service

For details of your local service representative, see back page. Only use the laminator in indoor areas. € Products marked with this symbol meet all applicable Community regulations for the European Economic Area

CONTACT

- ACCO Service Division
- Hereward Rise, Halesowen,
- West Midlands, B62 8AN
- 0800 279 5102
- service.uk@acco.com.
- www.gbceurope.com/service.
- Ref: Inspire+ / CBT12697
- **Issue:** 1 (09/16)
- ACCO Brands Europe
- Oxford House
- Aylesbury HP21 8SZ
- United Kingdom
- www.accobrand.com.

Documents / Resources

	<p>GBC Inspire Plus A4 and A3 Laminator [pdf] User Guide 4402076, 4402075, Inspire Plus A4 and A3 Laminator, Inspire Plus, A4 and A3 Laminator, Laminator</p>
---	---

References

-  [ACCO Brands](#)
-  [ACCO Brands Asia - Singapore Leading Supplier In Quality Office Products & Supplies](#)
-  [pelikanartline.com.au](#)

Manuals+.