



gazzini 10040761 Bar-End Mirrors Instructions

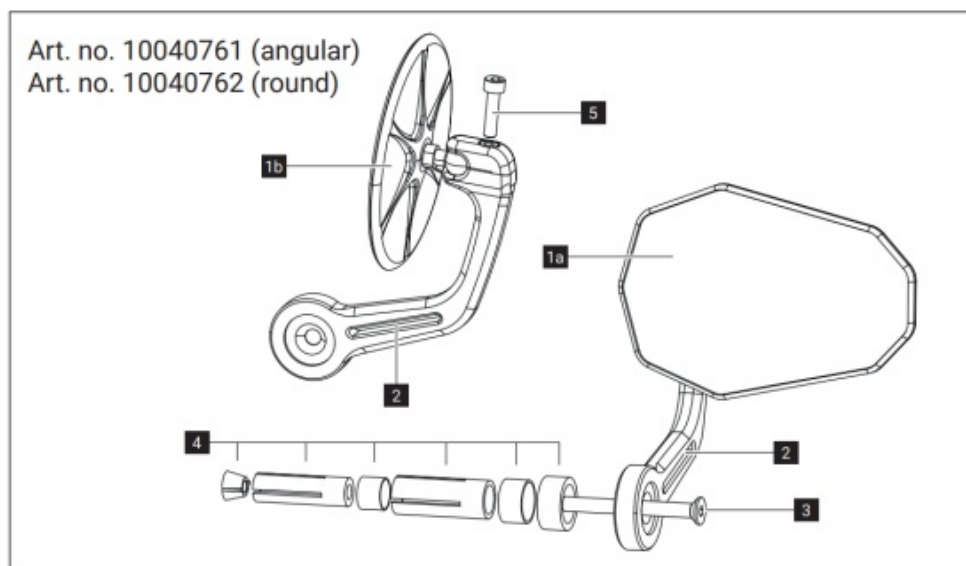
[Home](#) » [gazzini](#) » **gazzini 10040761 Bar-End Mirrors Instructions** 

gazzini 10040761 Bar-End Mirrors Instructions

Contents

- [1 What's included](#)
- [2 General information](#)
- [3 Safety](#)
- [4 Installation](#)
- [5 Storage](#)
- [6 Cleaning and care](#)
- [7 Warranty](#)
- [8 Disposal](#)
- [9 Contact](#)
- [10 Documents / Resources](#)
 - [10.1 References](#)
- [11 Related Posts](#)

What's included



1. **a** Angular mirror housing
 1. **b** Round mirror housing
2. Mirror stem
3. Countersunk screw with hexagon socket head ISO 10642 M6 x 60 A2
4. Clamping sleeve set
5. Cap screw with hexagon socket head DIN 6912 M5 x 20 A2

General information





Reading and keeping the instructions for use

These instructions for use apply exclusively to the aforementioned gazzini Bar-End Mirrors (for short: mirrors). They contain important information on installation, safety and the warranty. Read these instructions carefully, in particular the safety instructions, before using the mirror. Failure to follow the instructions can result in damage to the mirror itself or to your motorcycle, make it less safe to ride on the road, and possibly cause consequential damage. Keep these instructions for future reference. If you pass the mirror on to a third party, you must also hand over these instructions.

The instructions for use are based on the standards and regulations applicable in the European Union and reflect current state-of-the-art technology. When abroad, you should also observe any country-specific guidelines and laws.

Explanation of symbols

The following symbols and signal words are used in these instructions.

 WARNING!	This symbol/signal word indicates a hazard with a medium risk level which, if not avoided, may result in death or serious injury.
 CAUTION!	This symbol/signal word indicates a hazard with a low risk level which, if not avoided, may result in minor or moderate injury.
IMPORTANT!	This signal word warns of possible material damage.
	This symbol indicates useful additional information about assembly or usage.
	This symbol indicates that the packaging and product can be recycled.

Safety

Intended use

The gazzini Bar-End Mirror is used as a replacement for a faulty original mirror or for enhancing the look of the motorcycle. The mirror is designed for tubular motorcycle handlebars with an outside diameter of 22 mm (metric) and an inner diameter of between 13.5 mm and 18 mm. The ends of the handlebar must be open, i.e. they must not be blocked by thread inserts or similar.

The mirror is E-approved and road-legal in member states of the European Union and states signed up to the ECE regulations.

To ensure that you use the components correctly and safely on your motorcycle, always adhere to the specifications in your vehicle owner's manual and the directions of the vehicle manufacturer. The gazzini Mirror must only be used as described in these instructions. Any other use is considered improper use and can result in material damage. The manufacturer and supplier accept no liability for damage caused by improper or incorrect use.

Safety instructions



Danger for children and persons with reduced physical, sensory or mental abilities (e.g. partially disabled persons, elderly persons with reduced physical and mental abilities) or lack of experience and knowledge (e.g. older children)!

- The product includes small parts and packaging which could be swallowed. Keep these out of the reach of children, as there is a risk of asphyxiation if they are swallowed.



Risk of injury!

- When installing the mirror, ensure that the vehicle cannot topple over and that the workplace is well lit.



Risk of accident!

- For your own safety when riding your motorcycle, the mirror must be installed in such a way that it gives you an adequate view of following traffic.
- The mirror must be securely installed – If it were to fall off, it could endanger other road users and cause an accident.
- When installing the mirror stem on the handlebar end, you must ensure that it does not prevent the throttle twist grip from moving freely. The twist grip must be able to spring back by itself from any position when you release it.

IMPORTANT!

Risk of damage!

- Ensure that the mirror never makes contact with any other part of the vehicle (fairing, tank etc.) and does not impede the rider in any way, even when the handlebar is turned to full lock.

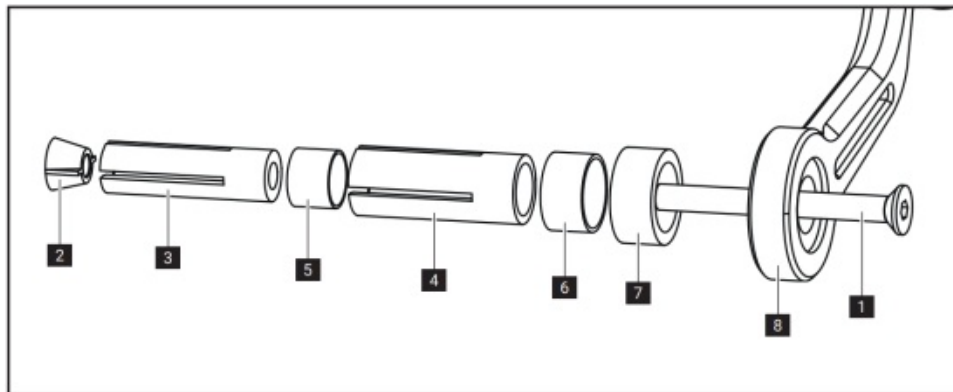
Installation

Preparation

First jack up the vehicle securely in a well lit place. To install the gazzini Bar-End Mirror, you require a metric handlebar (outside diameter 22 mm) with freely accessible, open bar ends and an inner diameter of 13.5 mm to 18 mm.

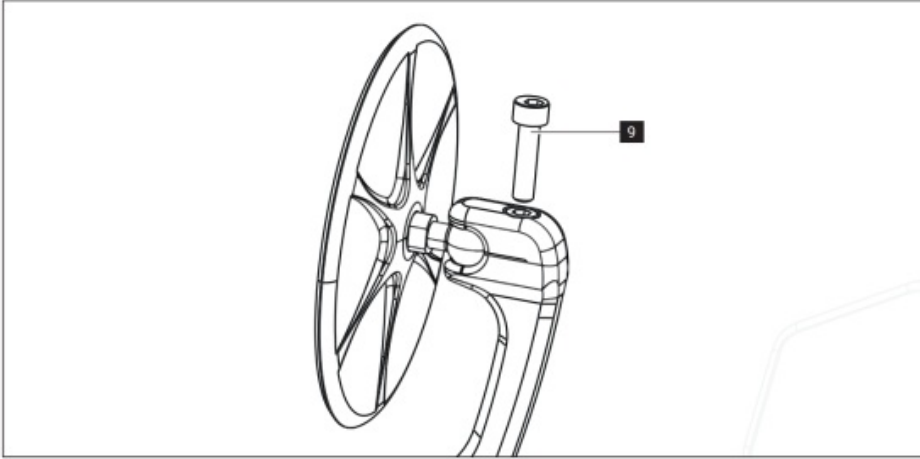
Any existing mirrors and bar ends must be removed.

Installation



Now select the clamping sleeve **(3 or 4)** which best suits the inside diameter of the handlebar. A set of clamping sleeves is supplied with the mirror. Insert the countersunk screw **(1)** through the mirror stem. Screw on the clamping sleeve with threaded cone **(2)** and pre-tighten so that the sleeve spreads a little but can still just be pushed into the handlebar. It may be necessary to use the large clamping sleeve **(4)** in order to fill out the handlebar tube as fully as possible. When using the large clamping sleeve **(4)**, it's imperative to also install the

smaller clamping sleeve **(3)**. Then insert the clamping sleeve into the handlebar and make sure that the respective spacer sleeve **(5, 6 or 7)** is inserted in the handlebar tube at the beginning. Align the mirror so that it provides the best possible view of the road behind you. Tighten the countersunk screw **(1)** using a hexagon key **(size 4)**.



If necessary, the mirror joint can be tightened more firmly with the cap screw **(9)** using a hexagon key **(size 4)**.

Risk of accident!

Make sure that the throttle twistgrip on the motorcycle is not blocked by the mirror stem. There should be 2 mm clearance between the throttle twistgrip and the mirror stem. The throttle twistgrip must turn easily and spring back by itself when released.

Make sure that the mirror doesn't hit against any part of the bike when the steering is at full lock, and check once more that all the screws are firmly fastened.

Storage

Until it is installed, the gazzini Mirror should be kept in its original packaging and stored in a place that is protected against weather and moisture.

Cleaning and care

Use warm soapy water or motorcycle cleaner and a soft cloth to clean the gazzini Mirror. Never use any sort of cleaner that may corrode aluminium. Finally, apply polishing wax to seal the surface of the mirror and protect it against the weather. Take care not to get any wax on the mirror lens.

Warranty

This product comes with the statutory two-year warranty. The warranty period begins on the date of purchase. It does not cover normal wear and tear, use for anything other than the intended purpose, or damage caused by an accident, tampering or attempted repairs by unauthorised persons or customer service departments.

Disposal



Dispose of packaging material and the product itself in accordance with applicable local regulations.

Contact

If you have any questions about the product and/or these instructions, before using the product for the first time,

please contact our Technical Centre by e-mail at: service@louis.eu. We will help you as quickly as possible. This is the best way to ensure that the product is used correctly.

Made in Taiwan

Exklusiv-Vertrieb:

Detlev Louis Motorrad-Vertriebsgesellschaft mbH

Rungedamm 35 • 21035 Hamburg • Germany

Tel.: 00 49 (0) 40 – 734 193 60

www.louis.de

service@louis.de

Detlev Louis AG • Oberfeld 15 • 6037 Root LU Switzerland

Tel.: 00 41 (0) 41 - 455 42 90

service@louis-moto.ch

ANL-10040761-62-2103



Documents / Resources

A black and white photograph of two motorcycle mirrors. The mirror on the left is a standard side mirror, and the one on the right is a bar-end mirror. Both are shown against a dark background with the Gazzini logo at the top.	<p>gazzini 10040761 Bar-End Mirrors [pdf] Instructions 10040761, 10040762, Bar-End Mirrors</p>
--	--

References

- [moto.ch - Das Motorrad-Portal](#)
- [Moto.fr : Pièces détachées moto](#)
- [Moto usate e moto nuove. Forum e news su Moto.it](#)
- [Louis – Motorradbekleidung und -technik | Louis ?](#)