



GATOR GTKPRO3 Vehicle GPS Tracking System User Guide

[Home](#) » [GATOR](#) » GATOR GTKPRO3 Vehicle GPS Tracking System User Guide 

Contents

- 1 GATOR GTKPRO3 Vehicle GPS Tracking System
- 2 IMPORTANT INFORMATION
- 3 INTRODUCTION
- 4 INCLUSIONS
- 5 DETAILED PRODUCT OVERVIEW:
- 6 FEATURES:
- 7 KNOWING YOUR DEVICE:
- 8 PINOUT:
- 9 ADVANCED WIRING DIAGRAM:
- 10 SETTING UP YOUR DEVICE:
- 11 LED INDICATIONS
- 12 INSTALLATION TIPS
- 13 LOCATION AND ORIENTATION CONSIDERATIONS
- 14 SERVER CONNECTION AND NEW ACCOUNT SETUP:
- 15 PORTAL LOGIN SCREEN:
- 16 MAIN SCREEN:
- 17 ADD OBJECT:
- 18 DEVICES:
- 19 GATOR TRACKING SMARTPHONE APP
- 20 Download This App
- 21 TECHNICAL SPECIFICATIONS:
- 22 TECHNICAL SPECIFICATIONS:
- 23 TECHNICAL ASSISTANCE:
- 24 Specifications:
- 25 FAQ:
 - 25.1 Q: Can I use a different SIM card with this tracker?
 - 25.2 Q: How long does the battery backup last?
- 26 Documents / Resources
 - 26.1 References

GATOR GTKPRO3 Vehicle GPS Tracking System

USER GUIDE

GPS TRACKING
ADVANCED VEHICLE TELEMATICS

gatortracking.com.au

IMPORTANT INFORMATION

- This user guide is considered correct at the time of printing but is subject to change. The guide is under constant review and revision, as is the server software constantly being improved and updated. We recommend you download the latest version of the guide, as well as check for more information and instructional videos, from our website: gatortracking.com.au.
- The following instructions are based upon this unit being connected to the Gator Tracking Server which requires an active paid subscription to be entered into within 30 days of activation of the SIM card in this device. The GTKPRO3 is a subscription based model and requires ongoing payment, details can be found at: gatortracking.com.au/subscriptions.
- All users of the Gator Tracking Service must agree to our terms of service at the time of registering their

account on the Gator Tracking Server. Users found breaching the terms of service may have their accounts deleted by the server administrator. Terms of service can be viewed on our website:

gatortracking.com.au/tracker/terms.

- When adding a device to an account on the Gator Tracking Server, you must first have a SIM card installed in your device (for reasons of easy access, do this before you have it installed) and the unit operational at the time of adding it to your account. Set up an account and add objects using a standard desktop computer or the App.
- The SIM card activates automatically when it first connects to a cellular signal once the tracker is fitted. Please ensure you read and understand this entire manual, along with the subscription details and terms of service, before fitting the device and activating the SIM card.

INTRODUCTION

This GTKPRO3 comes supplied with a M2M SIM Card which operates on the Telstra M2M CAT-1 Network, it includes 30 days of tracking. After which a subscription is required. Subscription costs, terms and conditions can be found at our website:

<https://gatortracking.com.au/tracker/guide/subscriptions>

INCLUSIONS

The GTKPRO3 is supplied with all the equipment that is necessary for basic tracking operation.

The package contains:

- GTKPRO3 tracking device
- M2M Micro SIM Card
- QR Code User Guide Sheet

DETAILED PRODUCT OVERVIEW:

The GTKPRO3 is a professional real-time tracking device with GNSS and LTE CAT-1 connectivity and backup battery. This device is pre-configured to simultaneously use the US based GPS and the Russian based GLONASS global satellite navigation systems. This device also includes a 4G network LTE CAT-1 transceiver for data communications to the tracking server. This device is pre-configured with ignition sensing, and has a digital control output that can operate an external relay for various / custom functions. One example is remote ignition disable functionality. It is perfectly suitable for fleet management, car rental companies, taxi companies, public transport, logistics companies and personal vehicles.

FEATURES:

Nationwide Coverage

4G LTE CAT-1 device operating on the Telstra Network

Unlimited Vehicle Tracking

track unlimited vehicles/trackers from a single log in

14 Months Tracking History

view tracking history and download detailed reports

Offline Memory

continues tracking even when data connection is lost

Fleet Management Tools

create sub accounts, group fleets and generate advanced reports

Vehicle Location Alerts

geo-fences, routes and places can be set to create alerts

12-24V Compatible

suitable for installation in virtually any vehicle

Battery Back Up

continues tracking when power is disconnected

Vehicle Monitoring

driver behaviour and crash impact alerts can be enabled

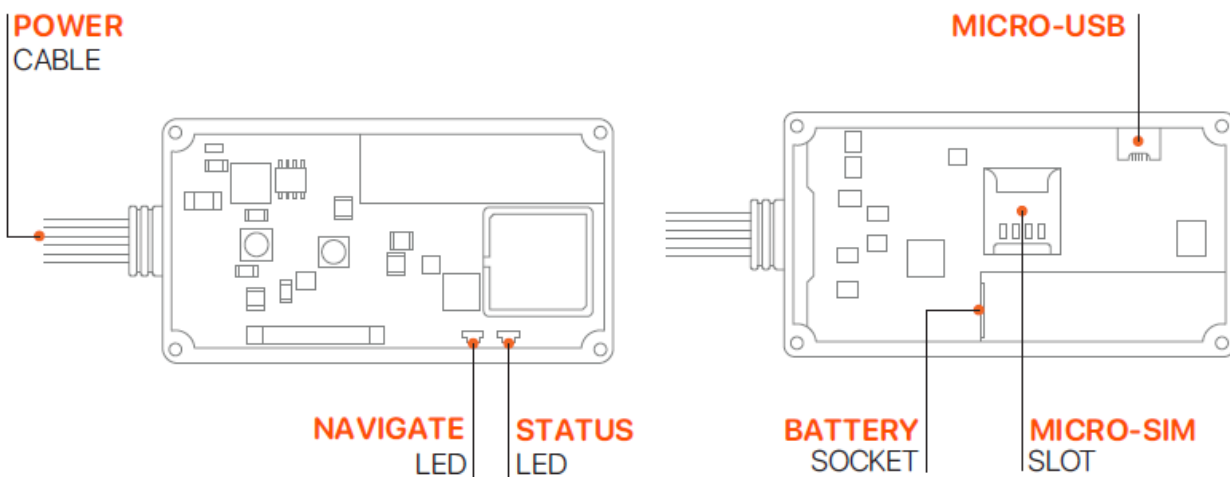
Tow Away Detection

will send an alert if the vehicle is being towed

Ignition Disable

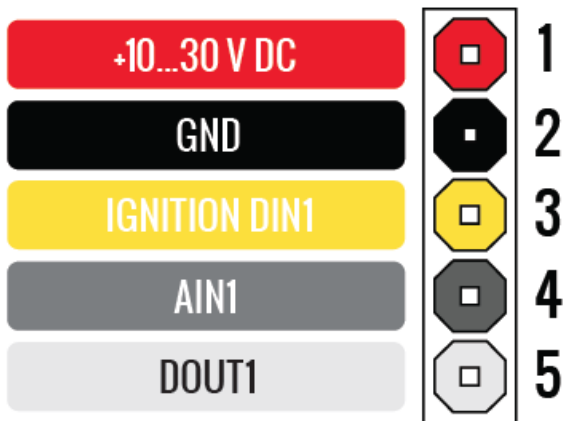
cut off the vehicle ignition remotely via the tracking portal

KNOWING YOUR DEVICE:

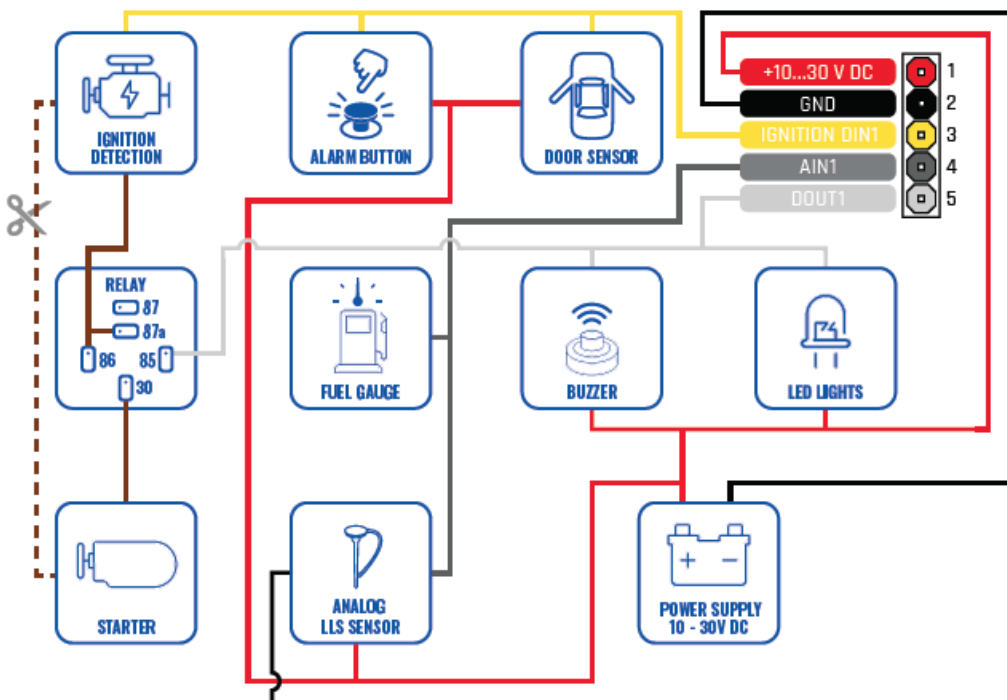


PINOUT:

PIN NUMBER	PIN NAME	DESCRIPTION
1	VCC (10-30) V DC (+)	(Red) Power supply (+10-30 V DC)
2	GND (-)	(Black) Ground
3	IGNITION DIN1	(Yellow) Digital input, channel1.DEDICATED FOR IGNITION INPUT
4	AIN1	(Grey) channel 1. Input range: 0-30 V DC
5	DOUT1	(White) Digital output. Open collector output. Max. 0,SADC



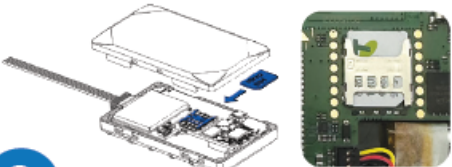
ADVANCED WIRING DIAGRAM:



This diagram outlines an advanced wiring circuit to utilise all features of the tracker, for a basic installation you will only need to connect Battery, Ignition and Ground.

SETTING UP YOUR DEVICE:

- 

1 COVER REMOVAL
Gently remove the top cover using a plastic pry tool from both sides. Then remove the top cover.
- 

2 MICRO-SIM CARD INSERT
Insert the supplied M2M Micro-SIM card. Make sure that Micro-SIM card cut-off corner looks as pictured above.
- 

3 REMOVING PROTECTION
Remove the adhesive tape protection from the battery.
- 

4 PLACING BATTERY
Place the battery inside the casing. Make sure the adhesive tape sticks to the casing.
- 

5 CONNECTING BATTERY
Connect the internal battery to the PCB.
- 

6 REATTACH COVER
Replace the top cover. Your device is ready to be connected.

IMPORTANT: Do not insert the included SIM card in any other device other than this tracker. Doing so will permanently disable the SIM. Take a photo of the top of your unit with your smart phone or to note the IMEI number of your device. You will need this in order to register the device on the server.

LED INDICATIONS

NAVIGATION LED INDICATIONS	
BEHAVIOUR	MEANING
Permanently switched on	GNSS Signal is not receive
Blinking every second	Normal mode GNSS is working
OFF	GNSS is turned off because: Device is in sleep or not working in mode
Blinking fast constantly	Device firmware is being flashed

STATUS LED INDICATIONS	
BEHAVIOUR	MEANING
Blinking every second	Normal mode
Blinking every two seconds	Sleep mode
Blinking fast for a short time	Modem activity
OFF	Device is not working or Device is in boot mode

INSTALLATION TIPS

(Here are some additional points to be aware of)

Wiring colours

– When wiring up your device, please pay careful attention to the colours of the wires.

Connecting the constant power wire

– Some vehicles have a function where after some time certain circuits will be completely switched off, we recommend connecting the constant power wire either directly to the battery or to a circuit that never switches off.
– Ensure the supplied external fuse is installed at the source.

Connecting the ignition power wire

– Ensure the device is connected to ignition power, not accessory power.
– Be sure to select an ignition source that does not switch off when the starter is cranked.
– Ensure the supplied external fuse is installed at the source.

Connecting the ground wire

– Ensure the ground wire is connected to the vehicle chassis or a metal part that is connected to the chassis.
– We recommend terminating the cable with a ring terminal that is a suitable size for where you are fixing the cable (not included).

After wiring is complete

– This device comes pre-configured and does not require any post installation configuration/setup.
– If operating correctly the unit will make immediate contact with the cellular network.
– The SIM card will authenticate that it is in the correct device and activate.
– The device will then make contact with the tracking server and will be ready to add to your account when you go online.

LOCATION AND ORIENTATION CONSIDERATIONS

IMPORTANT NOTE:

The Unit must be installed with the writing side of the module facing up. Failure to do so will result in poor GPS positioning. (It is advised to secure the module in place AFTER your wiring is complete and you have turned the device on to test that it's working. To do this you need to see the indication LEDS on the device)

After wiring is complete, a suitable location should be sought that has an unobstructed view of the sky from a metal perspective. ie. The unit should be placed out of sight but not behind any metal objects that could shade the GPS and cellular transceivers view of the sky above it. Large wiring looms are metal objects so if you are securing the unit to a harness, you must secure it on top of the harness, not underneath.

A location behind the dash well out of reach as close to the side skin of the top of the dashboard is ideal.

This unit has a 3D gyroscope/accelerometer system that needs to be calibrated after installation (The unit can take between 20 min to 2Hrs of driving to calibrate fully depending on your driving habits and where you are driving. Essentially the unit needs to experience acceleration, deceleration and change in direction at differing speeds.) Please note that gyro-based feature accuracy depends on this calibration being complete such as accident detection, tow detection and driver behaviour). The unit's orientation does not need to be perfectly flat, however the flatter the unit's orientation the better it will work.

SERVER CONNECTION AND NEW ACCOUNT SETUP:

Notes about our service:

The Gator Tracking server is for the exclusive use of Gator branded tracking devices.

Gator customers are eligible to register an account at anytime for free. However the devices added to the account require a subscription in order to work beyond 30 days from activation.

All users of the service must agree to our terms of service at the time of registering their account. Users found breaching the terms of service may have their accounts deleted by the server administrator. When adding a device to an account, you must have a SIM card installed in your device (for reasons of easy access, do this before you have it installed) and the unit operational at the time of adding it to your account. The easiest way to set up an account and add objects is to use a desktop computer. Alternatively see page 18 of this manual for App for Smartphone connection.

A Video of how to register an account and add your device can be found here.

<https://www.youtube.com/watch?v=pPVdCOul8wA>



INTRODUCTION TO THE GATOR GPS TRACKING SERVER (WEB PORTAL)

An introduction to the Gator GPS tracking server. Covers setting up an account. Adding objects. General tracking usage, Basic troubleshooting and subscription services. For more information about...

Please note that the references to the LED behaviour on this video does not apply to this model.

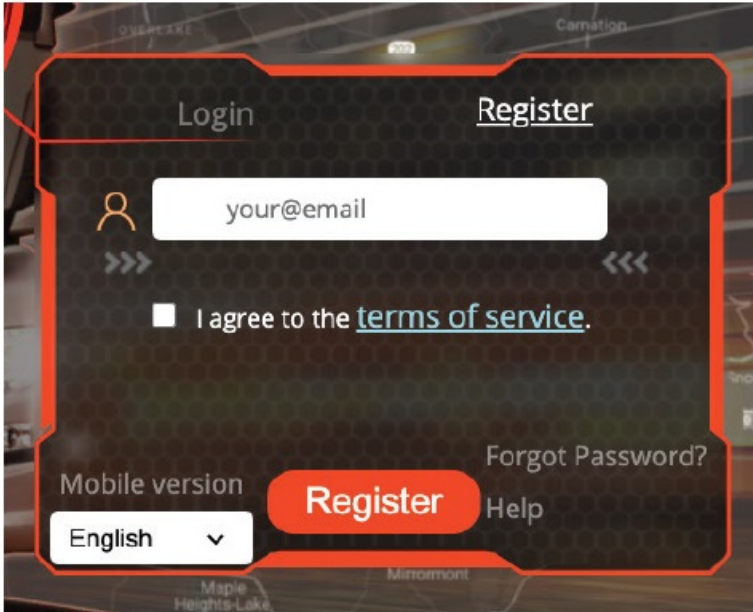
Please refer to Page 10 of this manual for LED indicator light details.

Alternatively, a basic guide on how to create your account and add an object visit www.gator.net.au

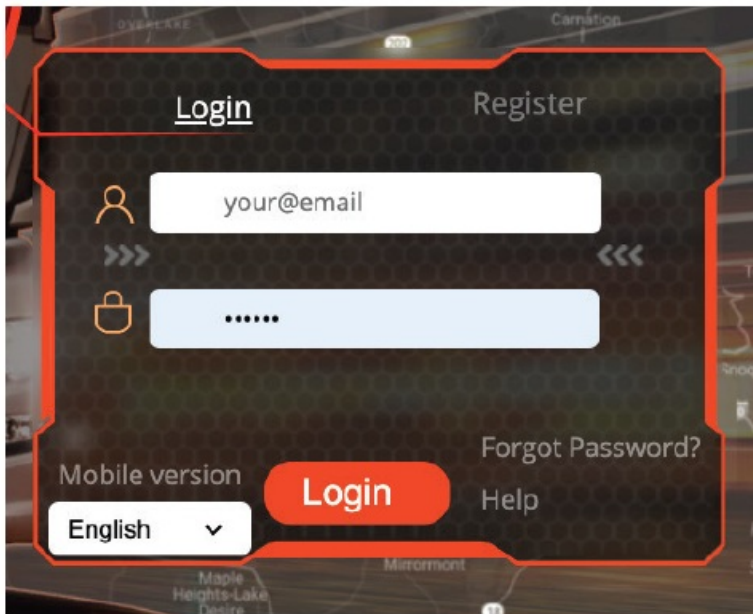
PORTAL LOGIN SCREEN:

Select "Register" at the top, and enter the email address you would like to use, make sure you get this correct as a password will be sent directly to it (one-time). Click "I agree to the terms of service" Press

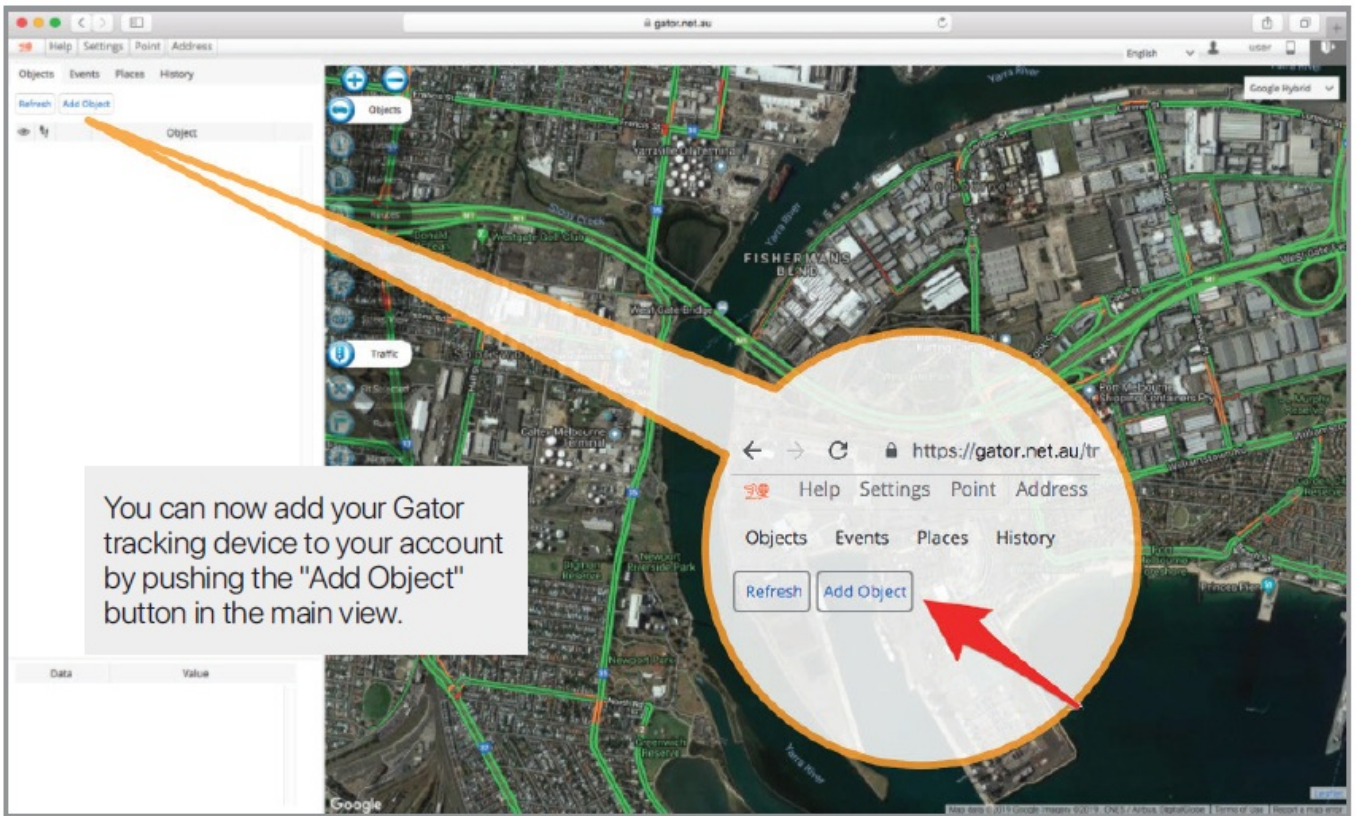
“Register” at the bottom, then wait a second for the success notice, which will ask you to check your email for the password.



Read the help that comes with your email, and login to the server with your server assigned password. We encourage you to change this password in your account settings. Go back to the login screen, this time type in your username and the password that was sent to you via Email.



MAIN SCREEN:



ADD OBJECT:

When you select add object this will bring up a box that lets you enter details about the device, confirm that you've configured it, and saved it. You will also have the option of adding a subscription for your tracker. You have up to 30 days to complete this task but we recommend you do it at the time of adding the device to your account. There is no financial advantage to waiting for the 30 days to expire as a credit is given on your first subscription based on the remaining complimentary period left on your device. The option to add up to 3 devices without subscriptions is available by pressing the link "add without subscription" instead of "Subscribe now" in the Add Object box.

The name of the object is for you to decide, and will show up on the left hand side of the tracking interface as the objects name,
(you can change this at any time.)

The IMEI number uniquely identifies your tracker, don't share this with anyone. It is important to get this number right. If incorrect the add object function will be rejected.

Add object
×

Object Name

IMEI

Please read the device [setup guide](#) before adding a new device

Would you like to subscribe this device?

Subscriptions are optional, you may add 3 unsubscribed Gator objects to your account, additional objects require subscriptions. [More Info](#)

Subscribe Now
Add without Subscription

PLEASE NOTE: You MUST have the SIM inserted before you can subscribe, the system will not let you add a subscription without this. If you add a subscription before the end of your 30 days included subscription value, you will receive a coupon for the days remaining.

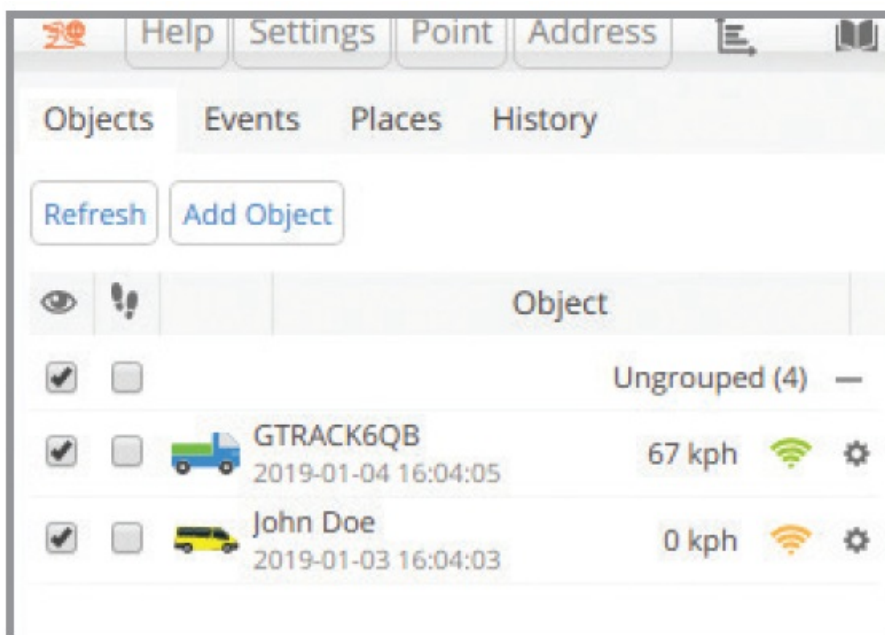
DEVICES:

Now your device has been added to your account, the GTKPRO3 is ready to track. Ensure the device is powered on (i.e. turn on the vehicle ignition), click on the device icon in the tracking portal and the map will automatically move to the tracker location. In its first cold start, a positional fix may take a few minutes, after that the unit generally finds its location in under a minute depending on its sleep state and it will start sending data to the server under your account. The system allows users a 30 day grace period to subscribe devices.

Devices appear in the left hand top section of the screen, like this:

Once you have been able to register your account and add objects you're up and away.

Please check in on our Gator YouTube channel for information about using some of the more advanced features of the server system.



<https://www.youtube.com/channel/UCwSTevtQvmDljbsDCB9bNFA> or search “Gator tracking” and look for videos with this logo.

GATOR TRACKING SMARTPHONE APP

FOR SMARTPHONES & TABLETS



The Gator Tracking Smartphone App allows you to monitor your vehicles, track their locations, create geofences and receive alerts when events are triggered. This App is for both iOS and Android devices. Search gator tracking or scan the QR code below”.

Download This App

Download This App



TECHNICAL SPECIFICATIONS:

GNSS	GPS, GLONASS, GALILEO, BEIDOU, QZSS, AGPS (Configured for GPS and GLONASS only)
Receiver	Tracking: upto 33 satellites
Tracking sensitivity	-165dBm
Accuracy	< 3M (Accuracy depends on PDOP metrics (satellite qty and spread))
Hot start	<1s
Warm start	<25s
Cold start	<35s
CELLULAR	
Technology	LTE CAT-1/NB-IoT/GSM (Configured for 4G CAT-1, Telstra Network only)
4G bands	GTKPR03-QJIBO: LTE FDD: 81/83/85/87/88/820/828
	GTKPR03-0KIBO: LTE FDD: 82/83/84/85/87/88/828/ 866
Data transfer	LTE: Max 10Mbps (DL)/Max 5Mbps (UL)
GPRS	Max. 85.6Kbps (DL)/Max. 85.6Kbps (UL)
Data support	SMS (text/data) SMS limited to administration only
SIM Supplied	M2M SIM card. Requires subscription to work beyond 30 days from activation.
Input voltage range	10 – 30 VDC with over-voltage protection
Back-up battery	170 mAh Li-Ion battery 3.7 V (0.63Wh)

TECHNICAL SPECIFICATIONS:

INTERFACE

Digital Outputs	1
CAN Adapter Inputs	1
1-Wire data expansion ports	1
GNSS + Cellular antenna USB	Internal High Gain 2.0 Micro-USS (Used for config/ debug only)
LED indication SIM	2 Status LEDlights – Micro-SIM
Memory	128MB internal flash memory
PHYSICALSPECIFICATION	
Dimensions	79 x 43 x12mm (L xW xH)
Weight	54g
OPERATING ENVIRONMENT	
Operating temperature	(without battery) -40 °C to +85 °C
Storage temperature	(without battery) -40 °Cto +85 °C
Operating humidity	5%to 95%non-condensing
Ingress Protection Rating	IP54
Battery charge temperature	0 °Cto +45 °C
Battery discharge temperature	-20 °Cto +60 °C
+-	
Battery storage temperature	-20 °Cto +45 °C for 1 month/ -20 °C to +35 °C for 6 months.

TECHNICAL ASSISTANCE:

If you need assistance setting up or using your Gator product now or in the future, call Gator Support.

Specifications:

- Nationwide Coverage 4G LTE CAT-1 device operating on the Telstra Network
- Unlimited Vehicle Tracking – track unlimited vehicles/trackers from a single log in
- 14 Months Tracking History – view tracking history and download detailed reports
- Offline Memory – continues tracking even when data connection is lost
- Fleet Management Tools – Vehicle Monitoring, create sub accounts, group fleets, driver behavior, crash impact, and generate advanced reports alerts can be enabled
- Vehicle Location Alerts
- Tow Away Detection – geo-fences, routes, and places can will send an alert if the vehicle is being towed
- 12-24V Compatible – suitable for installation in virtually any vehicle
- Ignition Disable – cut off the vehicle ignition remotely via the tracking portal
- Battery Back Up – continues tracking when power is disconnected

FAQ:

Q: Can I use a different SIM card with this tracker?

A: No, using any other SIM card will permanently disable the device. Use only the included M2M SIM card.

Q: How long does the battery backup last?

A: The battery backup ensures continuous tracking even when power is disconnected, providing uninterrupted service.

Australia

TEL: 03 – 8587 8898


Mon-Fri 9am – 5pm AEST

Copyright © 2024 by TDJ Australia

All rights reserved. No part of this publication may be reproduced, distributed, or transmitted in any form or by any means, including photocopying, recording, copying or other electronic or mechanical methods, without the prior written permission of the author.

Please retain this user guide for future reference. This manual was correct at time of printing but is subject to change. If you would like to download a digital copy of this manual, software or instructional videos, please visit the gatortracking.com.au website and search for your product via model name.

Documents / Resources

 GTKPRO3 User Guide GPS TRACKING ADVANCED VEHICLE TRACKING gatortracking.com.au © 2024	GATOR GTKPRO3 Vehicle GPS Tracking System [pdf] User Guide GTKPRO3 Vehicle GPS Tracking System, GTKPRO3, Vehicle GPS Tracking System, GPS Tracking System, Tracking System
--	---

References

- [Gator Tracking | Gator Tracking](#)
- [Subscriptions | Gator Tracking](#)
- [Terms of Service | Gator Tracking](#)
- [GTrack by Gator - 3.20 :: 23281](#)
- [Subscriptions | Gator Tracking](#)
- [User Manual](#)

[Manuals+](#), [Privacy Policy](#)

This website is an independent publication and is neither affiliated with nor endorsed by any of the trademark owners. The "Bluetooth®" word mark and logos are registered trademarks owned by Bluetooth SIG, Inc. The "Wi-Fi®" word mark and logos are registered trademarks owned by the Wi-Fi Alliance. Any use of these marks on this website does not imply any affiliation with or endorsement.