

# WFC03.61 Universal Wireless Gateway Instruction Manual

## Contents

- [1 WFC03.61 Universal Wireless Gateway](#)
- [2 Product Information](#)
- [3 Product Usage Instructions](#)
- [4 SYSTEM SCHEME](#)
- [5 INSTALLATION](#)
- [6 Documents / Resources](#)
  - [6.1 References](#)
- [7 Related Posts](#)

# Gateway

## WFC03.61 Universal Wireless Gateway

### Product Information

#### Specifications:

- **Model:** Gateway WFC03.61
- **Power Supply:** 230 Vac
- Compatible with standard routers

### Product Usage Instructions

#### Installation:

Before installing, disconnect the home power supply.

1. Remove the front cover.
2. Secure the device to the wall.
3. Pass conductors from the wall through the bottom cover, removing the bulkhead on the bottom.
4. Connect the power supply to the 230Vac terminals. Terminals 9 to 12 are not used.
5. If powered by external conductors, fix them with the provided cable clamp and protect them in a suitable electrical duct.
6. Close with the front cover and secure it with the supplied locking screw.

7. Reconnect the home power and check the status of the LEDs on the device.

### Factory Data Reset:

To reset factory data, press and hold the reset button for at least 10 seconds until both LEDs are on.

### LED Status:

- **Green LED:** Indicates installation mode.
- **Blue LED:** Indicates normal use.
- **Red LED:** Indicates errors.

### LED Colors and Meanings:

Color	Blinking	Meaning
Green	Steady	No device connected
Green	Blinking slow	Device is connected

### Wi-Fi and RF Connectivity:

To manage Wi-Fi network settings and zone associations, follow the guided procedure in the app downloaded from the Apple Store or Google Play.

### Frequently Asked Questions

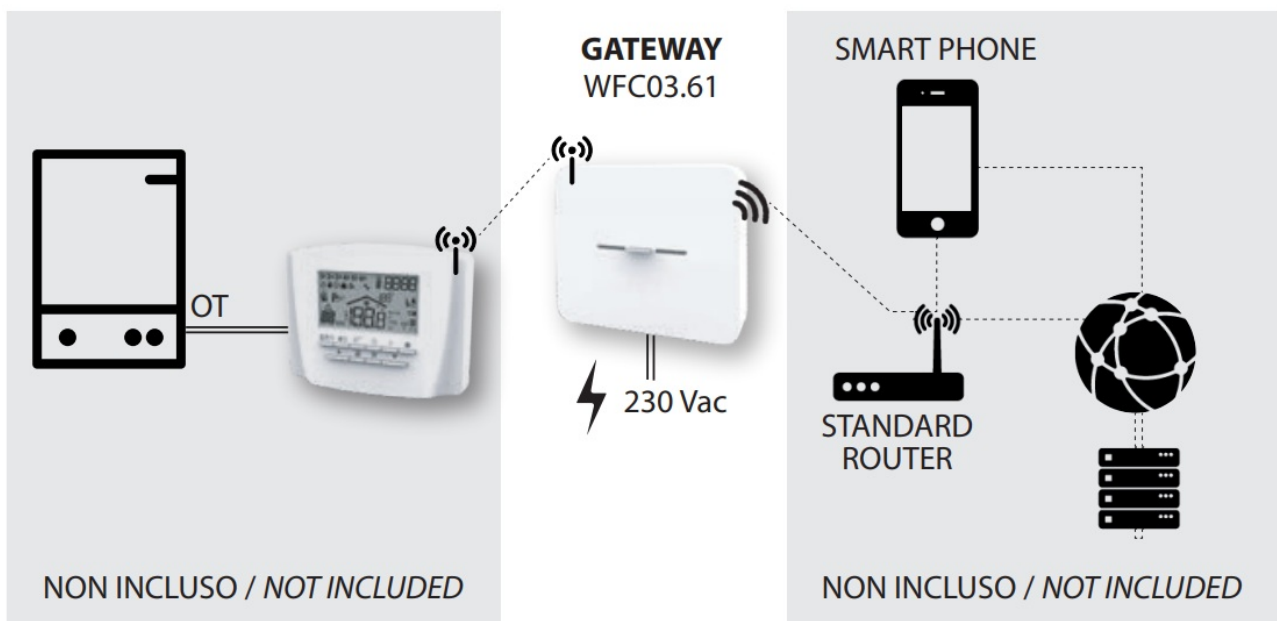
#### Q: How do I reset the device to factory settings?

A: Press and hold the reset button for at least 10 seconds until both LEDs are on to perform a factory data reset.

#### Q: What do the different LED colors indicate?

A: The green LED indicates installation mode, blue LED indicates normal use, and red LED indicates errors. Refer to the manual for detailed meanings based on blinking patterns.

### SYSTEM SCHEME



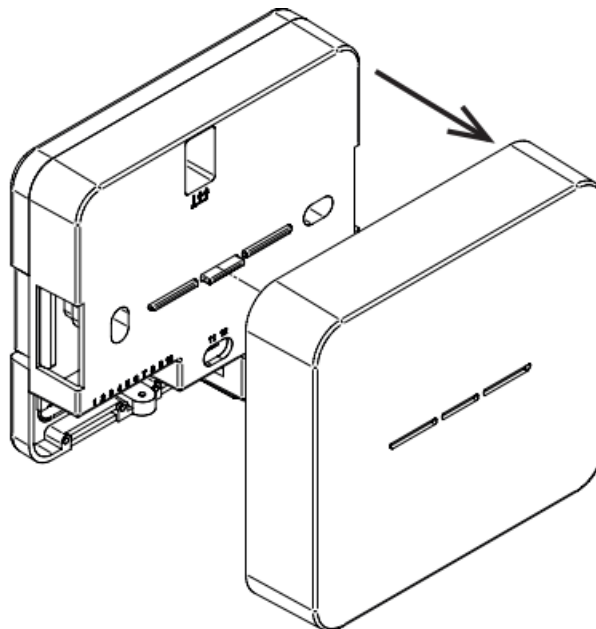
Download the APP from the APPLE STORE or GOOGLE PLAY.

## INSTALLATION

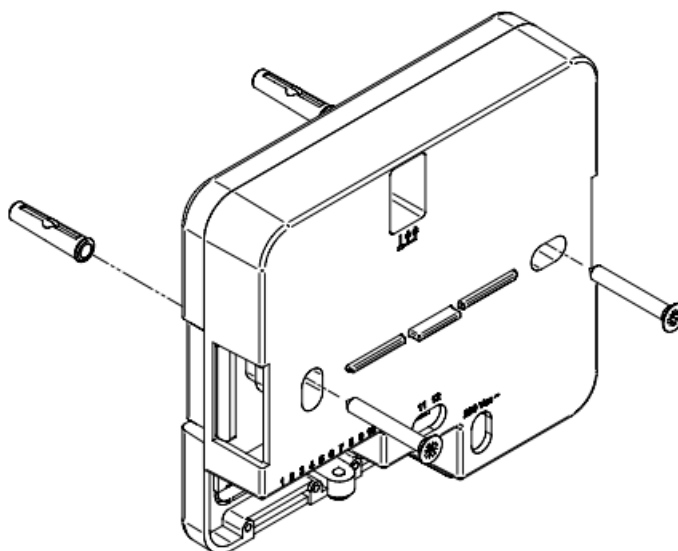
1. BEFORE INSTALLING DISCONNECT HOME POWER.



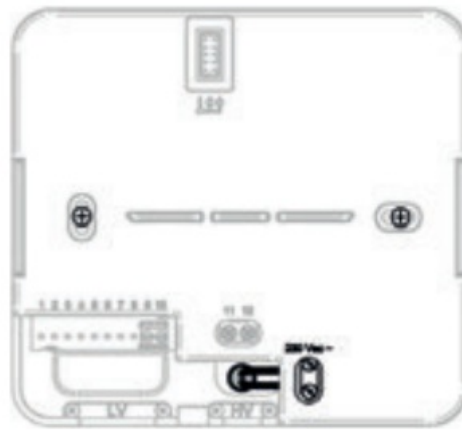
2. Remove front cover.



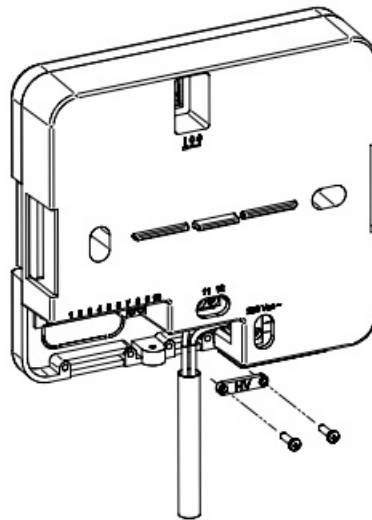
3. Secure the device to the wall.



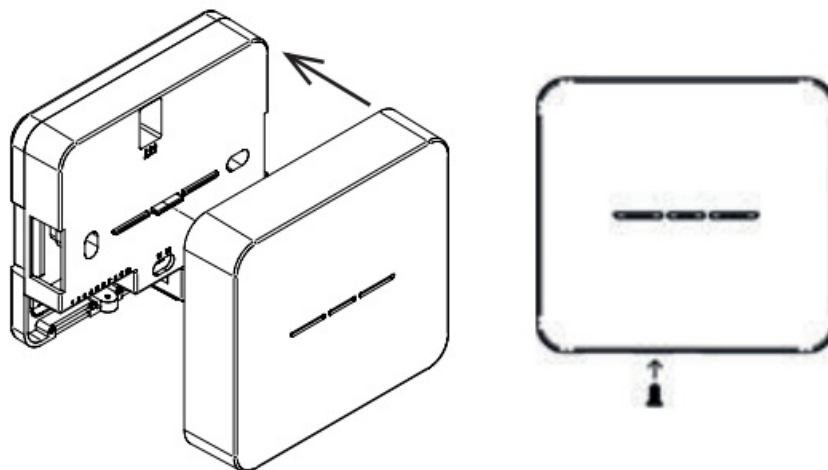
4. **Example:** conductors from wall through the bottom cover, removing the bulkhead on the bottom.  
Connect power supply to “230Vac” terminals.  
Terminals 9 to 12 are not used.



5. If powered by conductors external to the wall, fix the conductors with the cable clamp supplied and protect them in a suitable electrical duct.



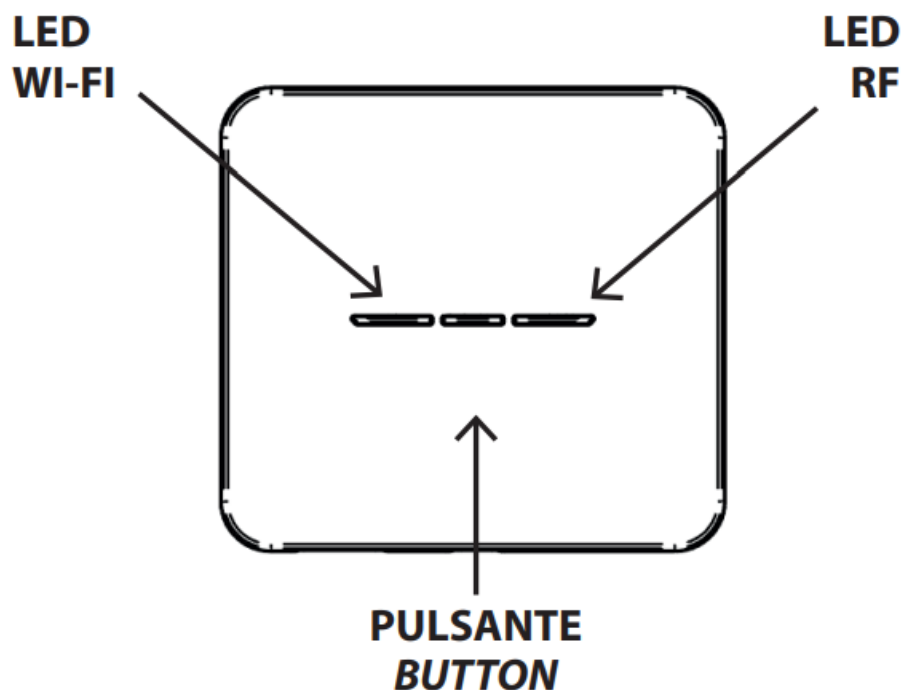
6. Close with the front cover and secure with the supplied locking screw.



7. Connect home power and check the status of the LEDs on the device.



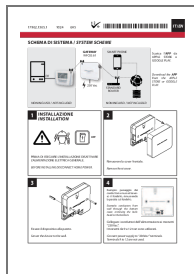
Factory data reset: keep pressed the button for at least 10 seconds, until both leds are on.



	MODE	COLOUR	BLINK	MEAN
LED WI-FI	INSTAL.	GREEN	slow	No device connected
			fast	Device is connected
			steady	Socket is open
	USE	BLUE	slow	Connected to local wi-fi
			steady	Connected to remote server
	ERRORS	RED	3 repeated flashes	Not connected to local wi-fi
			2 repeated flashes	IP address not acquired
			1 repeated flash	Not connected to remote server
LED RF	OFF			No zone associated
	USE	BLUE	slow	Waiting for zone association
			steady	At least one associated zone
	ERRORS	RED	1 repeated flash	No communication with some RF zones
			slow	No communication with all RF zones

Follow the guided procedure in the APP to associate/dissociate zones and set up the Wi-Fi network.

## Documents / Resources



**[GATEWAY WFC03.61 Universal Wireless Gateway](#) [pdf] Instruction Manual**  
17962.1365.1, 1024, 6A5, WFC03.61 Universal Wireless Gateway, WFC03.61, Universal Wirel  
ess Gateway, Wireless Gateway, Gateway

References

- [User Manual](#)

**Manuals+, Privacy Policy**

This website is an independent publication and is neither affiliated with nor endorsed by any of the trademark owners. The "Bluetooth®" word mark and logos are registered trademarks owned by Bluetooth SIG, Inc. The "Wi-Fi®" word mark and logos are registered trademarks owned by the Wi-Fi Alliance. Any use of these marks on this website does not imply any affiliation with or endorsement.