

# Gateway Plastic Hardware Lighting GWWIC02 WiFi Controller Instruction Manual

[Home](#) » [Gateway Plastic Hardware Lighting](#) » Gateway Plastic Hardware Lighting GWWIC02 WiFi Controller Instruction Manual 



## LANDIA ASSEMBLY INSTRUCTION

### Contents

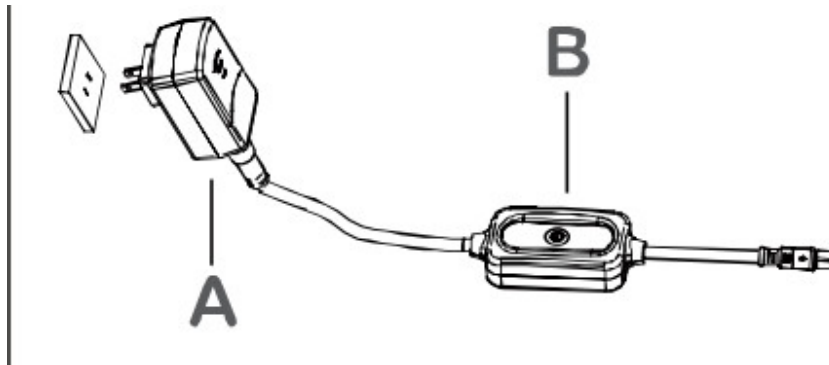
- [1 PREPARATION](#)
- [2 INSTALLATION INSTRUCTIONS](#)
- [3 FCC](#)
- [4 Documents / Resources](#)
- [5 Related Posts](#)

## PREPARATION

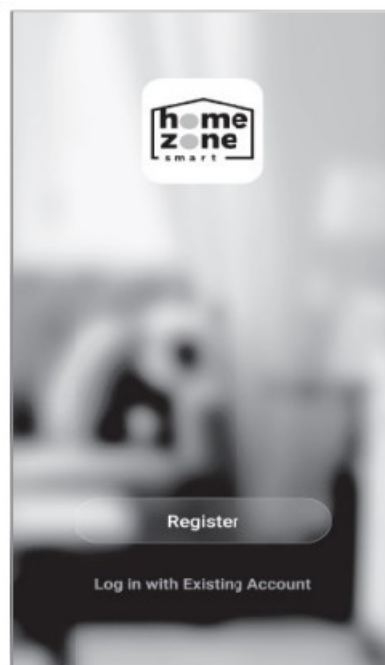
Before beginning assembly, installation, or operation of the product, make sure all parts are present. Compare parts with package and hardware contents lists on page 1. If any part is missing or damaged, do not attempt to assemble, install or operate the product. Contact customer service for replacement parts. Tools Required for Assembly (not included): Phillips Screwdriver, Safety Glasses, Ladder, Supporting hardware (eyebolts or brackets) Estimated assembly time: 20 minutes

## INSTALLATION INSTRUCTIONS

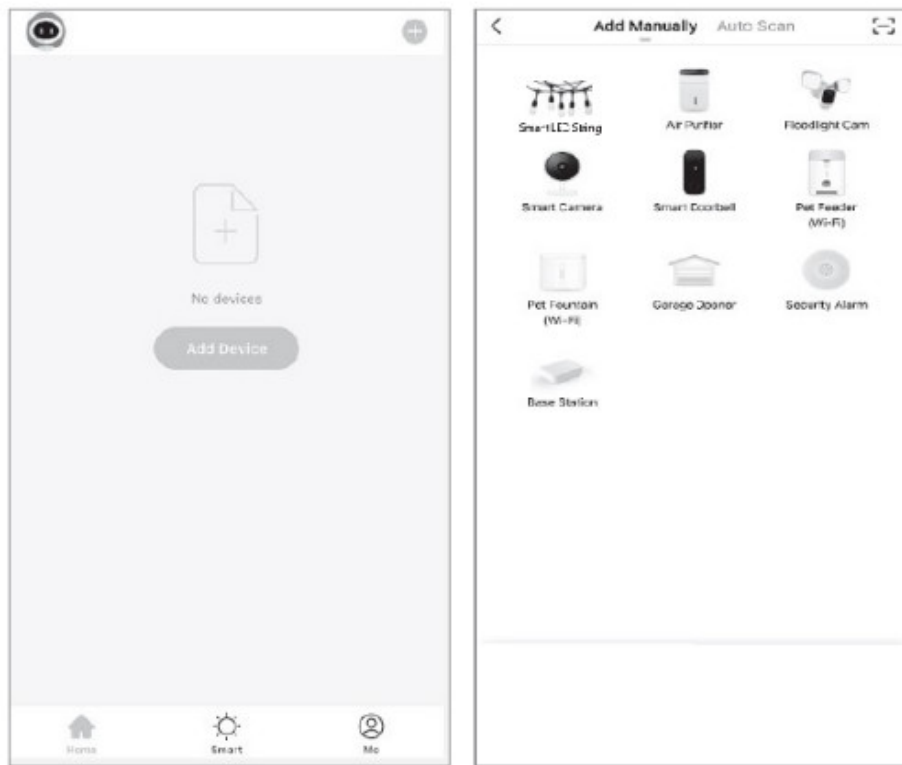
1. Plug the adapter (A) into an appropriate power outlet, check each lamp is Mashing.
2. If the lamp is not Mashing, then long push the controller (B).



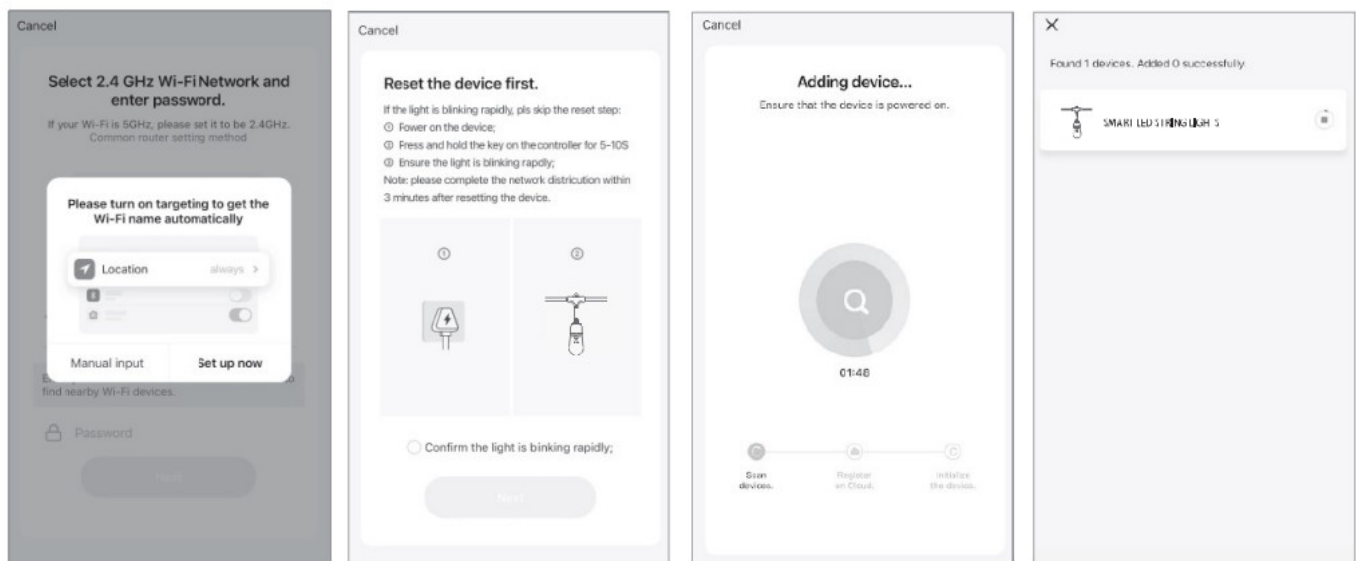
3. Add the device to Home Zone Smart APP a. Get the APP and Create an account. Download the 'Home Zone Smart' APP to your smartphone from App Store or Google Play. b. Launch the APP from your smartphone and Create an account c. Follow the on-screen instructions.



4. Open the Home 7one Sm.' t App tap 'Add Devices' empty room) or to add your Smart LLD String lights



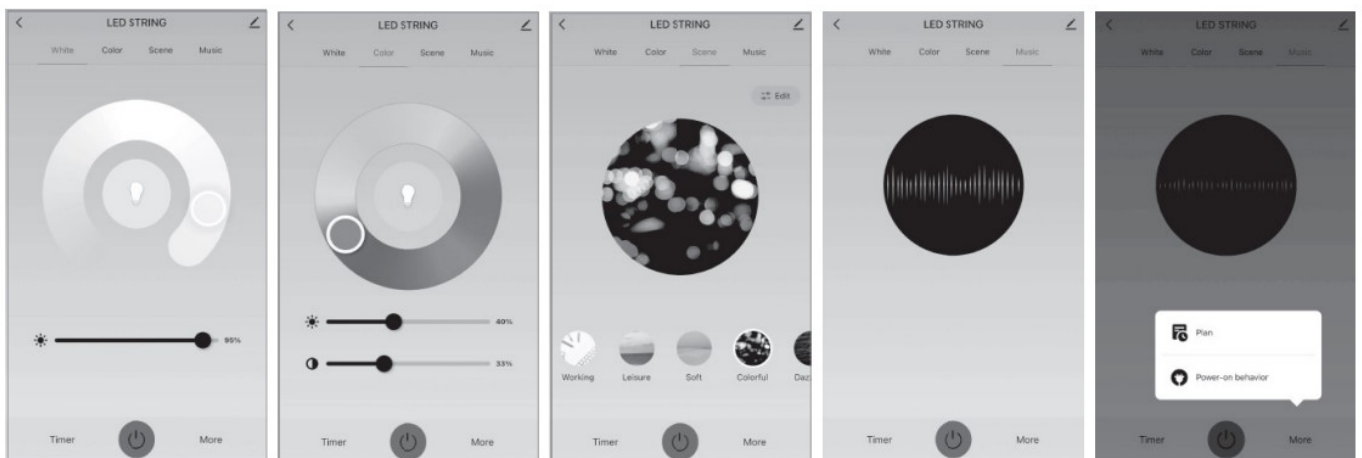
5. Enter your home Wi-Fi password, then click “next”, connection will now begin.



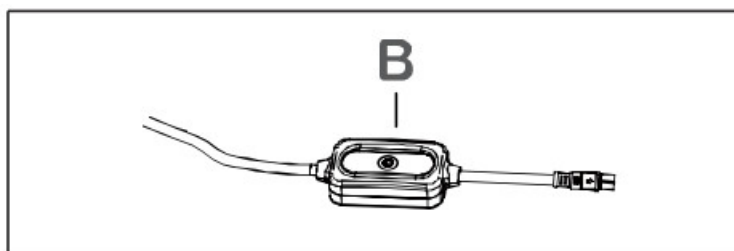
6. Once connected you should see the message “Added successfully” and the light on the controller should be solid GREEN (see below Nguire). You can click on the pen to change the device name then press “Done” .



## 7. Adjust the color and mode in APP



## 8. Or adjust the color and mode by short pushing the controller (B)




## FCC

This device complies with Part 15 of the FCC Rules. Operation is subject to the following two conditions: (1) this device may not cause harmful interference, and (2) this device must accept any interference received, including interference that may cause undesired operation. This device complies with FCC Part 15 of FCC Rules.

**Warning:** Changes or modifications to this unit not expressly approved by the party responsible for compliance could void the user’s authority to operate the equipment. **NOTE:** This equipment has been tested and found to comply with the limits for a Class B digital device, pursuant to Part 15 of the FCC Rules. These limits are designed to provide reasonable protection against harmful interference in a residential installation. This equipment generates, uses, and can radiate radio frequency energy and, if not installed and used in accordance with the instructions, may cause harmful interference to radio communications. However, there is no guarantee that interference will not occur in a particular installation. If this equipment does cause harmful interference to radio or television reception, which can be determined by turning the equipment off and on, the user is encouraged to try to correct the interference by one or more of the following measures:

- Reorient or relocate the receiving antenna.
- Increase the separation between the equipment and receiver.
- Connect the equipment into an outlet on a circuit different from that to which the receiver is connected.
- Consult the dealer or an experienced radio/TV technician for help.

FCC Radiation Exposure Statement This equipment complies with FCC radiation exposure limits set forth for an uncontrolled environment In order to avoid the possibility of exceeding the FCC radio frequency exposure limits, human proximity to the antenna shall not be less than 20cm (8 inches) during normal operation.

 **WARNING:** This product can expose you to chemicals including lead and lead compounds, Di(2-Ethylhexyl)phthalate (DEHP), which are known to the State of California to cause cancer and birth defects or other reproductive harm. For more information go to [www.P65Warnings.ca.gov](http://www.P65Warnings.ca.gov).

Horizon Marketing Group, LW C  
4198 Industry Way  
Flowery Branch, GA 30542  
customer Loyalty Team  
1-888-805-4556  
M —F, Barn —6pm EST

**Documents / Resources**

|   |  |
|---|--|
|  | <a href="#">Gateway Plastic Hardware Lighting GWWIC02 WiFi Controller</a> [pdf] Instruction Manual<br>GWWIC02, 2AP9S-GWWIC02, 2AP9SGWWIC02, GWWIC02 WiFi Controller, WiFi Controller |
|---|--|