



# GATEKEEPER G4 Viewer Plus User Guide

[Home](#) » [GATEKEEPER](#) » GATEKEEPER G4 Viewer Plus User Guide 

## Contents

- [1 GATEKEEPER G4 Viewer Plus](#)
- [2 PRODUCT INFORMATION](#)
- [3 LOCATING VIDEO](#)
- [4 CREATING CLIPS](#)
- [5 EXPORT TYPES](#)
- [6 AUTO DOWNLOADING](#)
- [7 CAMERA TOOLS](#)
- [8 Documents / Resources](#)

# GATEKEEPER

**GATEKEEPER G4 Viewer Plus**



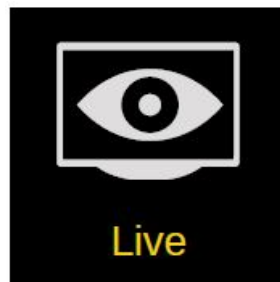
## PRODUCT INFORMATION

G4VIEWERPLUS is a software application used for viewing and managing video footage captured by mobile digital video recorders (DVRs) used in vehicles such as buses. The software provides tools for locating, playing, clipping, and exporting video footage. It also allows for remote access to downloaded video and auto-downloading of offline video.

## LOCATING VIDEO

### 1. Cellular Access

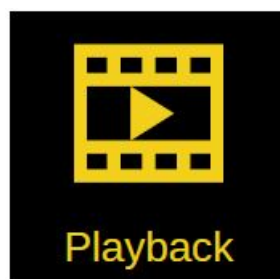
For access (cellular access) while vehicle is en-route, or any time the DVR is active, select: LIVE



### 2. Wireless Network

For access while connected to the wireless network (Buses online will appear "yellow") select: Playback >

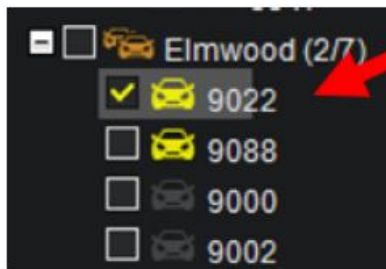
Online Note: The DVRs will remain on approximately 2 hours after bus is shut off.



### 3. Remote Access

For remote access to downloaded video select: Playback > Server > Select bus(es) > Enter Date range > Search > Calendar displayed > Double-click date with a "red" dot (metadata, i.e., Driver Alert) and/or "grey"

(video)



## PLAYING VIDEO

### 1. Find Date and Press Play

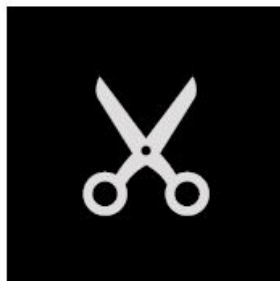
Select desired date any or all camera channels and press the play icon.



## CREATING CLIPS

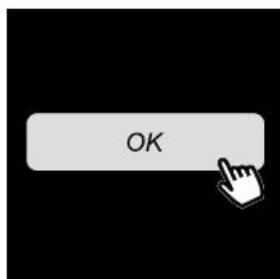
### 1. Identify Video for Clipping

Once desired video is identified, click the Clip button (scissor icon). Start and end time markers are overlaid on video timeline.



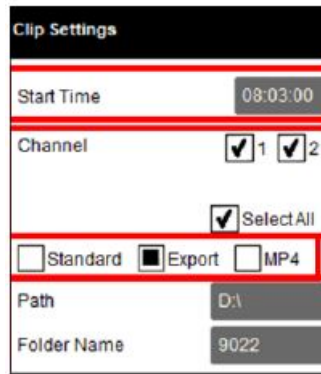
### 2. Open Clip Settings

Click OK to open the Clip Settings window.



### 3. Remote Access

In the Clip Settings window, adjust/confirm the following settings:



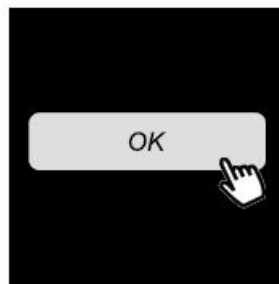
The 'Clip Settings' dialog box contains the following fields and options:

- Start Time:** A text field with the value '08:03:00'.
- Channel:** Two checkboxes labeled '1' and '2', both of which are checked.
- Select All:** A checkbox that is checked.
- Export Type:** Three radio buttons labeled 'Standard', 'Export', and 'MP4'. The 'Export' radio button is selected.
- Path:** A text field with the value 'D:\'.
- Folder Name:** A text field with the value '9022'.

- Start and End Time
- **Channel** – Select any or all channels required for the clip to be exported
- **Export Type** – The video can be exported as Standard, Export, or MP4
- **Path** – Select the destination location where the exported file(s) will be saved.

#### 4. Finish

Click OK to finish.



## EXPORT TYPES

### 1. Standard

Choose Standard when sharing video clips with users who have a licensed version of G4ViewerPlus installed.



### 2. Export

Choose Export when sharing video clips with users who do not have access to G4ViewerPlus. Video clips export in a stand-alone application (\*.EXE) that combines video clip data with a self-contained Mini-Player.



### 3. MP4

Choose MP4 when sharing video clips with users who have no need for sensor data, and have a media player installed (e.g., VLC).



## AUTO DOWNLOADING

Set up an Auto download, one-time or reoccurring task, to view video that is currently offline or to save video for future use:

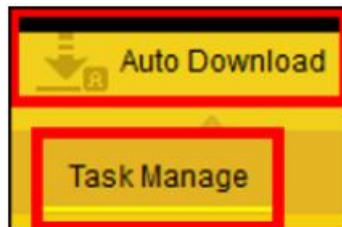
### 1. Download

Select the Download icon > Auto Download > Task Manage > Add task



### 2. Set-up for Reoccurring Task

Set-up task name > Adjust start & End times (select Permanent Execution for reoccurring task set-up) > Add  
Blackbox “metadata” choose “Event date >



### 3. Input Info

Task info	
Basic Info	
Group/Vehicle	9022
Task Name	
Start Time	08:00:00
End Time	08:05:00
Type	<input checked="" type="checkbox"/> Black Box <input checked="" type="checkbox"/> Video
Repeat	Never
Start Date	2020-08-27
End Date	<input type="checkbox"/> Permanent execution
	2020-08-27
Net Mode	All netmode
Task Effective Days	7
Stream	<input checked="" type="radio"/> Main Stream <input type="radio"/> Sub Stream
Video Type	All

1. Net Mode – All net mode, Task Effective days- 365, Stream- Main stream, Video type- All
2. Choose cameras; typically, the outside cameras channels can be unchecked >
3. Select Save. Buses will automatically start transferring data when they are connected.

4. Select Task Monitor to view status of tasks.
5. See “remote access to downloaded video” above to view saved video.

## CAMERA TOOLS

There are two tools available on the top right of each camera window and one editing control tool described below:

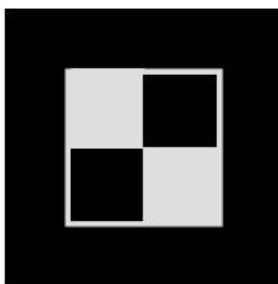
### 1. Magnifying glass

Magnifying glass will allow you to digitally zoom in an area: Select Magnifying glass > draw box over required area > Click / Drag to pan.



### 2. Blur

Blur tool will allow you to blur chosen sections for privacy reasons: Select Blur (mini checker board) > Click and drag selected areas. Click OK. The blurred video will NOT save if exporting to MP4.



### 3. Snapshot

Snapshot takes an image snapshot of the current playback in a .BMP file format. The location where the file is saved is specified in the Configuration, System Settings.




## CONCLUSION

This guide is meant to assist video analysts to quickly navigate G4ViewerPlus and its system settings. While it doesn't replace G4ViewerPlus training, this quick guide focuses on the most common instructions, accompanied with easy-to-reference images. If you require software training, need troubleshooting assistance, or for any other inquiries please contact Support by e-mailing [customer care@gatekeeper-systems.com](mailto:customer care@gatekeeper-systems.com). For immediate assistance please dial toll-free 1 888 666 4833 and ask for tech support.

---

Documents / Resources

	<p><a href="#">GATEKEEPER G4 Viewer Plus</a> [pdf] User Guide</p> <p>G4 Viewer Plus, G4, Viewer Plus, Plus</p>
---	--

Manuals+