



GASTROBACK 42626 Espresso Machine Instruction Manual

[Home](#) » [GASTROBACK](#) » GASTROBACK 42626 Espresso Machine Instruction Manual

Contents [[hide](#)]

- 1 GASTROBACK 42626 Espresso Machine
- 2 DESCRIPTION
- 3 SAFETY WARNINGS
- 4 ELECTRICAL SAFETY
- 5 THE APPLIANCE
- 6 BEFORE FIRST USE
- 7 OPERATION
- 8 HOT WATER FUNCTION
- 9 STEAM FUNCTION
- 10 AFTER USE
- 11 DESCALING
- 12 STORAGE
- 13 TROUBLESHOOTING
- 14 NOTES FOR DISPOSAL
- 15 Documents / Resources
 - 15.1 References
- 16 Related Posts

GASTROBACK®

GASTROBACK 42626 Espresso Machine



Product Information: Espresso Machine

The Espresso Machine is a product designed for private use and is intended for preparing and grinding coffee, boiling water, and frothing milk. The product is not suitable for professional use and should only be used indoors in dry rooms. The product comes with a manual that provides instructions on how to operate the machine safely and effectively.

Safety Warnings

It is important to carefully read the instructions provided in the manual before using the Espresso Machine. This will help you to understand the functions and properties of the product and ensure that it is used safely. Adhere strictly to the safety information mentioned in these instructions.

Product Usage Instructions

1. Remove all packaging materials from the Espresso Machine.
2. Before connecting the appliance to the power supply, ensure that it is placed in a dry indoor room.
3. Follow steps 1-4 in the "Preparing Coffee" chapter to use the Espresso Machine.
4. To start the steam function, turn the control knob to the steam position.
5. After use, clean the Espresso Machine and ensure that it is properly stored.
6. To avoid damage to the product, property, or personal injury, use the Espresso Machine only as described in this manual.
7. In case of any problems, refer to the troubleshooting section of the manual or contact the product manufacturer for assistance.

IMPORTANT NOTE – PLEASE READ CAREFULLY –

BEFORE YOU USE THE DEVICE!

All GASTROBACK® products are intended for food processing of food products and groceries. For reasons of health protection and hygiene, products that are used on a daily basis or used only once, are not allowed to be

returned. Check the goods just as you would do in a retail store.

You only have to pay for a possible loss in value of the goods, if this loss of value is due to a non-necessary for the examination of the nature, characteristics and function of the goods handling.

An unnecessary way to check the nature, characteristics and function of the goods is the processing of food products or groceries into food and drinks.

If you have any questions about GASTROBACK® products, if your unit is not working properly straight away or if you need any accessories or spare parts for your GASTROBACK® product please contact our customer service before returning.

GASTROBACK® Customer Service Hotline:

Phone: +49 (0) 4165 – 22 25 0

Monday to Friday (except on holidays) from 8am to 4pm

E-Mail: info@gastroback.de

We attach certain importance to your safety. Thus, we ask you to read all provided instructions and information in this booklet carefully and completely, before you start running the appliance. This will help you to know all functions and properties of your new appliance. We especially ask you to adhere strictly to the safety information mentioned in these instructions.

DESCRIPTION

This appliance is only intended for preparing and grinding coffee, boiling water and frothing milk.

The appliance is intended for private use and not for professional operation.

The appliance is intended for indoor use only. Use the appliance only as described in this manual. Any other use might lead to damage of the appliance, property or personal injury.

No liability will be accepted for damage resulting from improper use or non-compliance with this manual.

SAFETY WARNINGS

IMPORTANT SAFETY INSTRUCTIONS! READ CAREFULLY AND KEEP FOR FUTURE REFERENCE! PAY PARTICULAR ATTENTION TO ALL FIGURES ON THE ILLUSTRATION PAGE!

- Read this instruction manual carefully before using the appliance. Familiarise yourself with the operation, adjustments and functions of switches. Internalise and follow the safety and operation instructions in order to avoid possible risks and hazards.
- Remove all packaging materials.
- **WARNING – DANGER OF SUFFOCATION!** Packaging materials are not toys. Children should not play with the packaging materials, as they pose a risk of swallowing and suffocation!
- **WARNING!** Switch the appliance off and disconnect it from the power supply before replacing attachments, cleaning work and when not in use.
- **WARNING – RISK OF ELECTRIC SHOCK!** Protect the appliance and its electrical parts against moisture. Do not immerse the appliance and its electrical parts in water or other liquids to avoid electrical shock. Never hold the appliance under running water. Pay attention to the instructions for cleaning and care.
- Do not operate the appliance with wet hands or while standing on a wet floor. Do not touch the power plug with wet hands.
- **WARNING – HOT SURFACE!** The surfaces are liable to get hot during use. Especially do not touch the metal surfaces of the portafilter or the steam wand or hold your hands under them. Only touch the steam wand by its silicone sleeve.
- **WARNING – DANGER OF INJURY!** Take care to avoid injury from sharp elements.
- **WARNING – DANGER OF INJURY!** Avoid contacting moving parts. Wait until all components have completely

stopped before touching them.

- This appliance is classified as protection class I and must be connected to a protective ground.
- Only use in dry indoor rooms.
- Dry
- Damp

1. This appliance shall not be used by children. Keep the appliance and its cord out of reach of children.
2. Children shall not play with the appliance.
3. This appliance can be used by persons with reduced physical, sensory or mental capabilities or lack of experience and knowledge if they have been given supervision or instruction concerning use of the appliance in a safe way and if they understand the hazards involved.
4. Regularly check the power plug and power cord for damage. If the supply cord is damaged, it must be replaced by the manufacturer, its service agent or similarly qualified persons in order to avoid a hazard.
5. This appliance is intended to be used in household and similar applications such as:
 - staff kitchen areas in shops, offices and other working environments;
 - farm houses;
 - by clients in hotels, motels and other residential type environments;
 - bed and breakfast type environments.
6. **WARNING!** Avoid spillage on the connector.
7. Regarding the instructions for cleaning surfaces in contact with food, please refer to chapter "After use".
8. Regarding information on operating times for accessories, please refer to chapter "Operation".
9. **WARNING!** Misuse may lead to injury. Use this appliance solely in accordance with these instructions. Do not attempt to modify the appliance in any way. Care shall be taken when handling the sharp cutting blades, emptying the bean hopper and during cleaning.
10. **WARNING!** The heating element surface is subject to residual heat after use.
11. Always disconnect the appliance from the supply if it is left unattended and before assembling, disassembling or cleaning.
12. Switch off the appliance and disconnect from supply before changing accessories or approaching parts that move in use.
13. **DANGER OF ELECTRIC SHOCK!** Do not attempt to repair the appliance yourself. In case of malfunction, repairs are to be conducted by qualified personnel only.
14. Do not pull the power plug out of the electrical outlet by the power cord and do not wrap the power cord around the appliance.
15. Never use accessories which are not recommended by the manufacturer. They could pose a safety risk to the user and might damage the appliance. Only use original parts and accessories.
16. Connect the mains plug to an easily accessible socket, in order to quickly disconnect the appliance from the mains supply in an emergency.
17. If you use an extension cord or a multi-socket unit, it must have an appropriate power rating.
18. Always turn the appliance off before disconnecting the power plug.
19. Always place and operate the appliance on an even, stable, heat-resistant and dry surface.
20. **WARNING!** The appliance shall not be placed in a cabinet when in use.
21. Never fill the water tank with warm or hot water or with other liquids such as milk. Use cold drinking water only.
22. **RISK OF SCALDING!** Do not open the cover of the water tank or remove the water tank or portafilter while the

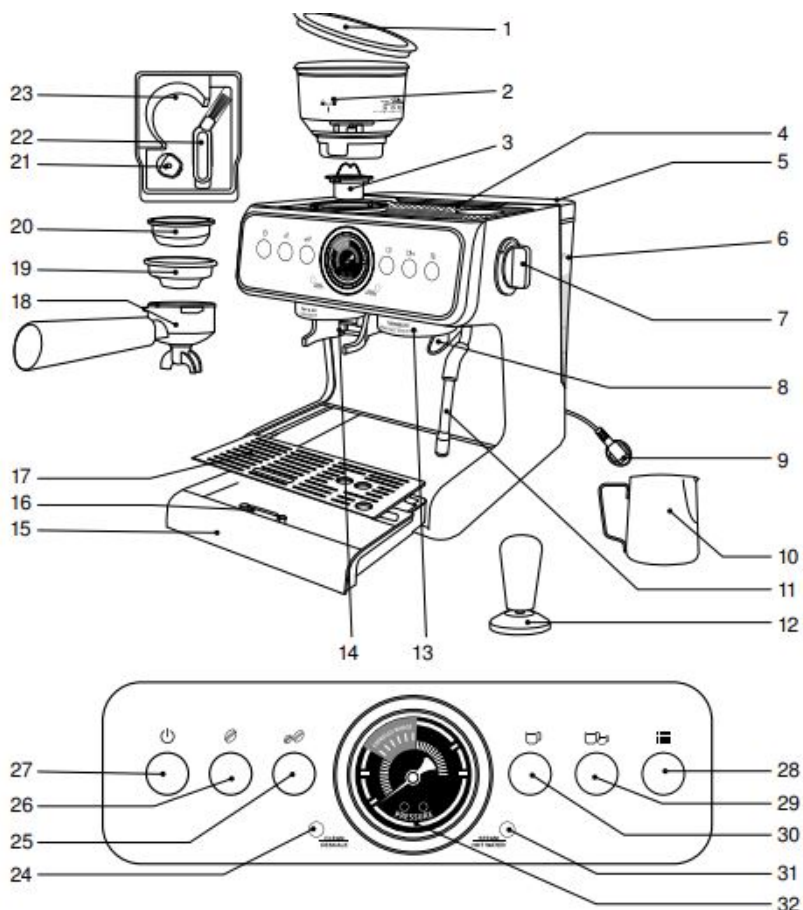
appliance is operating.

23. Make sure that the appliance has sufficient space around it and does not come in contact with flammable material. The appliance must not be covered.
24. RISK OF SCALDING! Do not overfill the appliance.
25. Do not operate the appliance without water in the water tank. Ensure the water level is between MIN and MAX marking.
26. Beware of escaping hot steam during operation.
27. RISK OF INJURY! Make sure to turn and lock the portafilter correctly before operation. Otherwise, it may be expelled by the steam pressure.
28. Do not leave the appliance unattended during operation.

ELECTRICAL SAFETY

1. Ensure the rated voltage shown on the rating label corresponds with the voltage of the power supply.
2. Do not operate any appliance with a damaged power cord or plug, when the appliance malfunctions or has been damaged in any manner.
3. Protect the power cord against damages. Do not let it hang over sharp edges, do not squeeze or bend it. Keep the power cord away from hot surfaces and ensure that nobody can trip over it.
4. Do not open the housing under any circumstances. Do not insert fingers or foreign objects in any opening of the appliance and do not obstruct the air vents.
5. Protect the appliance against heat. Do not place close to open flames or heat sources such as stoves or heating appliances.

THE APPLIANCE



1. Bean hopper lid
2. Bean hopper
3. Grinding wheel
4. Cup warming plate
5. Water tank lid
6. Water tank
7. Control knob
8. Coffee/Hot water outlet
9. Power cord with power plug
10. Milk jug
11. Steam wand
12. Tamper
13. Brewing head
14. Coffee powder outlet
15. Drip tray
16. Floater
17. Drip plate
18. Portafilter
19. Single cup filter
20. Double cup filter
21. Cleaning pin
22. Cleaning brush
23. Accessory box
24. Clean/Descale indicator
25. Grinding button (Double cup)
26. Grinding button (Single cup)
27. Power button
28. Program button
29. Double cup button
30. Single cup button
31. Steam/hot water indicator
32. Pressure gauge

BEFORE FIRST USE

Carry out the steps "Preparing coffee" and "Boiling water" (Operation) with fresh water up to the MAX marking and without coffee powder. Once all the water has run through, discard it. Afterwards, clean the appliance and its accessories (After use).

NOTE


There may be some noise when the appliance pumps water for the first time. This is normal.

OPERATION



PREPARING COFFEE

1. Fill water into the water tank.
2. Make sure the control knob is in position •.
3. Connect the appliance to the power supply and press the power button. The appliance starts preheating. The power indicator flashes and the grinding indicators light up.
4. When the appliance is preheated, it enters standby mode. All button indicators light up.
5. According to your desired amount of cups, insert the single-cup or double-cup filter into the portafilter.
6. Fill an appropriate amount of coffee powder into the filter (Single cup: approx. 13 g / Double cup: approx. 19 g).
OR Connect the grinding wheel to the appliance's grinding mechanism by turning it clockwise. Place the bean hopper on top of it. Align the pins on the hopper and the appliance, press the hopper down and turn it clockwise to lock it. The grinding indicators stop flashing. Fill coffee beans into the bean hopper and set the hopper to the desired coarse-ness between 0 (fine) and 30 (coarse). Insert the portafilter into the bracket on the left. Press the desired grinding button (Single cup: approx. 13 g / Double cup: approx. 19 g). The respective grinding indicator flashes and the appliance grinds the respective coffee powder amount. If you want to grind less coffee powder, press the previously selected grinding button to stop the grinding process manually. Pull out the portafilter after grinding.
7. Press the coffee powder in the filter down with the included tamper. When the edge of the tamper aligns with the edge of the portafilter, the coffee powder amount is appropriate.
8. Insert the portafilter into the bracket on the right and turn it counterclockwise to lock it.
9. Place one cup/two cups on the drip plate and press the single cup/double cup button (Single cup: approx. 30 ml / Double cup: approx. 60 ml) to start the operation. The single-cup or double-cup indicator flashes.
10. The appliance returns to the standby mode automatically after the coffee has run through.

HOT WATER FUNCTION

1. Follow steps 1- 4 in chapter "Preparing coffee".
2. Place a cup under the coffee/hot water outlet. Make sure it can hold up to 280 ml of water.
3. Turn the control knob to position  The coffee/ hot water outlet dispenses hot water (max. 280 ml). The steam/hot water indicator flashes and the program indicator goes out.
4. Turn the control knob to position • after all the water has run through. You can also turn it to this position to stop the flow of water. The appliance returns to standby mode.

STEAM FUNCTION

1. Follow steps 1-4 in chapter "Preparing coffee".
2. Turn the control knob to position  to start the steam function. The steam wand releases steam, the steam/hot water indicator flashes and the program indicator goes out.
3. For a good milk frothing result, release the steam for 3-5 seconds, turn the control knob to position •, insert the steam wand into the milk and turn the control knob back to position  to froth the milk.
4. Turn the control knob to position • to stop the steam. The appliance returns to standby mode.

NOTES

- When the coffee powder is too fine to brew coffee, or there is not enough water in the water tank, all button indicators flash and an acoustic signal sounds. If there is no operation for one minute after this reminder, the appliance returns to standby mode.
- The grinding function cannot be used for more than 3 minutes continuously. After this time, the grinding indicators flash alternately and an acoustic signal sounds. Let the grinder cool down for at least 6 minutes in this case.
- The steam function cannot be used for longer than 5 minutes.
- The appliance turns off automatically if it is left in standby mode for approx. 10 minutes.

AFTER USE

CLEANING

NOTE

Clean the appliance regularly to keep it in a safe and hygienic working condition and to ensure that the coffee taste is not impaired.


- Before cleaning, unplug the appliance and let it cool down completely. Empty the water tank and portafilter, if necessary.
- Do not clean the appliance with steel wool, strong chemicals, alkali, abrasive or disinfecting agents as they may damage its surface.
- Do not immerse the appliance in water or other liquids to clean it. Make sure that the electrical parts do not become wet or damp.
- Clean the body of the appliance with a soft damp cloth. Wipe with a dry soft cloth.
- Clean all detachable parts of the appliance (besides the detachable grinding wheel on the bean hopper) in warm, soapy water. Rinse with clear water and dry with a dry soft cloth.
- The rear end of the included cleaning brush can be used to detach the filter from the portafilter.
- Places on the steam wand and filters that are difficult to reach can be cleaned with the included cleaning pin. Use its thicker side for the steam wand and its thinner side for the filters.
- To clean the grinding wheel and the other parts of the grinding mechanism, remove the bean hopper from the appliance by turning it counterclockwise. Remove the grinding wheel from the bean hopper by turning it counterclockwise.
- Clean all parts of the grinding mechanism on the appliance itself and the grinding wheel on the bean hopper with the included cleaning brush. Clean the coffee grinder and coffee powder outlet at least once every two weeks. When you notice a reduction in released coffee powder amount, or coffee powder is spreading outside during grinding, clean the coffee powder channel, grinding wheel and coffee powder outlet including its anti-static device. When the coffee grinder is used to grind fine coffee powder, make sure to clean the coffee powder channel more regularly.
- The appliance may only be used again after it is dried completely.

DESCALING

NOTE

Descale the appliance every 4 – 6 months or when the clean/descale indicator lights up. The descaling intervals depend on water hardness and frequency of use (the clean/descale indicator will light up when the system detects

that the used water amount has reached 15 L). Only use the descaling agents mentioned in this manual. The descaling cycle takes approx. 10 minutes.

1. Make sure the drip tray is empty and installed in place together with the drip plate.
2. Fill the water tank with 1 liter of water. Add descaling tablets and wait for them to dissolve. OR Add half a cup of liquid descaling agent into the water tank, then add 1 liter warm water to allow the solution to mix thoroughly. OR Add 1.5 tablespoons of white vinegar into the water tank, then add 1 liter warm water to allow the solution to mix thoroughly.
3. Insert the water tank into place.
4. Place an empty 1 liter container under the coffee/hot water outlet and another empty 1 liter container under the steam wand.
5. Connect the power plug to the electrical outlet. Turn the control knob to position •
6. Keep the single cup button, double cup button and program button pressed until their indicators turn off, the power indicator and clean/descale indicator flash, the steam/hot water indicator lights up and an acoustic signal sounds. This means that the appliance has entered the descaling program.
7. Set the control knob to position . The clean/ descale indicator lights up solidly and the steam/ hot water indicator flashes. Hot water comes out of the coffee/hot water outlet and the steam wand.
8. When the process is finished, the clean/descale indicator and steam/hot water indicator flash and an acoustic signal sounds. Make sure to turn the control knob to position • after the water flow has stopped. The clean/descale indicator and steam/ hot water indicator light up solidly.
IMPORTANT – You only have a maximum of 5 minutes to complete steps 9 -11 before the descaling cycle is exited automatically.
9. Clean the water tank, steam wand and coffee/ hot water outlet to remove the descaling solution. Empty the 1 liter containers holding the hot water.
10. Fill the water tank with fresh water. Insert the water tank into place.
11. Place an empty 1 liter container under the coffee/hot water outlet and another empty 1 liter container under the steam wand.
12. Set the control knob to position . The clean/descale indicator lights up and the steam/hot water indicator flashes. Hot water comes out of the coffee/hot water outlet and the steam wand.
13. When the water flow stops, the descaling is finished. An acoustic signal sounds, and the clean/descale and steam/hot water indicator flash.
14. Turn the control knob to position •. The appliance returns to standby mode.

STORAGE

- Before storage, always make sure that the appliance is completely dry and cooled down.
- Remove the drip tray and pull out the accessory box behind it. Store the cleaning pin, cleaning brush, single cup and double cup filter in the accessory box, rein-sert it and reinstall the drip tray.
- Store the appliance in a cool, dry place, protected from moisture and out of the reach of children.
- Preferably store the appliance in its original packaging.

TROUBLESHOOTING

Only perform the steps described in this instruction manual! All further inspection, maintenance and repair work

must be performed by an authorized service center or a similarly qualified specialist.

Problem	Possible cause	Solution
Appliance does not operate.	Power plug is not connected to electrical outlet or power button was not pressed.	Plug in the power plug. Press the power button.
The single cup indicator and double cup indicator flash.	The bean hopper is not installed.	Install the bean hopper.
There are water marks on the bottom of the appliance.	The water tank or drip tray are not installed correctly or the drip tray is full.	Make sure that the water tank and the drip tray are installed correctly, and that the drip tray is empty.
No coffee comes out from the portafilter, coffee does not come out smoothly, or the portafilter cannot be installed in its bracket properly.	Excessive amount of coffee powder, too fine coffee powder or coffee powder pressed with excessive force.	The coffee powder should not exceed the amount suitable to the number of cups. Adjust the grinding setting of the grinder accordingly. Do not press the coffee powder repeatedly with excessive force.
Coffee has no crema.	The coffee beans are damp or the coffee powder is too coarse.	Choose fresh coffee beans and powder with a medium grinding thickness.
No steam.	The steam function is not preheated yet or the steam wand is blocked.	Wait until the appliance is preheated sufficiently or descale the appliance and clean the steam wand with the cleaning pin.
The appliance does not make coffee or hot water immediately. Instead, steam is released and the appliance automatically pumps water.	Normal phenomenon. After steaming is completed, the pressure needs to be released to reduce the temperature (takes approx. 20-30s). At this time, other operations cannot be performed. The water pumping is used for cooling down the heating element quickly. After this process is finished, the appliance can be used again as usual.	

NOTES FOR DISPOSAL

Dispose of the appliance and packaging must be effected in accordance with the corresponding local regulations and requirements for electrical appliances and packaging. Please contact your local disposal company.

Do not dispose of electrical appliances as unsorted municipal waste, use separate collection facilities. Contact your local government for information regarding the collection systems available. If electrical appliances are disposed of in landfills, dumps, or refuse incineration, hazardous substances can leak into the ground water or can be emitted into air, thus getting into the food chain, and damaging your health and well-being as well as poisoning flora and fauna. When replacing old appliances with new ones, the vendor is legally obligated to take back your old appliance for disposal at least for free of charge.

INFORMATION AND SERVICE

Please check www.gastroback.de for further information.

For technical support, please contact GASTROBACK® Customer Care Center by phone: +49 (0) 4165/22 25 – 0 or e-mail info@gastroback.de.

Please refer to our home page for a copy of these operating instructions in PDF.

WARRANTY

We guarantee that all our products are free of defects at the time of purchase. Any demonstrable manufacturing or material defects will be to the exclusion of any further claim and within 2 years after purchasing the appliance free of charge repaired or substituted. There is no Warranty claim of the purchaser if the damage or defect of the appliance is caused by inappropriate treatment, over loading or installation mistakes. The Warranty claim expires if there is any technical interference of a third party without a written agreement. The purchaser has to present the sales slip in assertion-of-claim and has to bear all charges of costs and risk of the transport.

NOTE

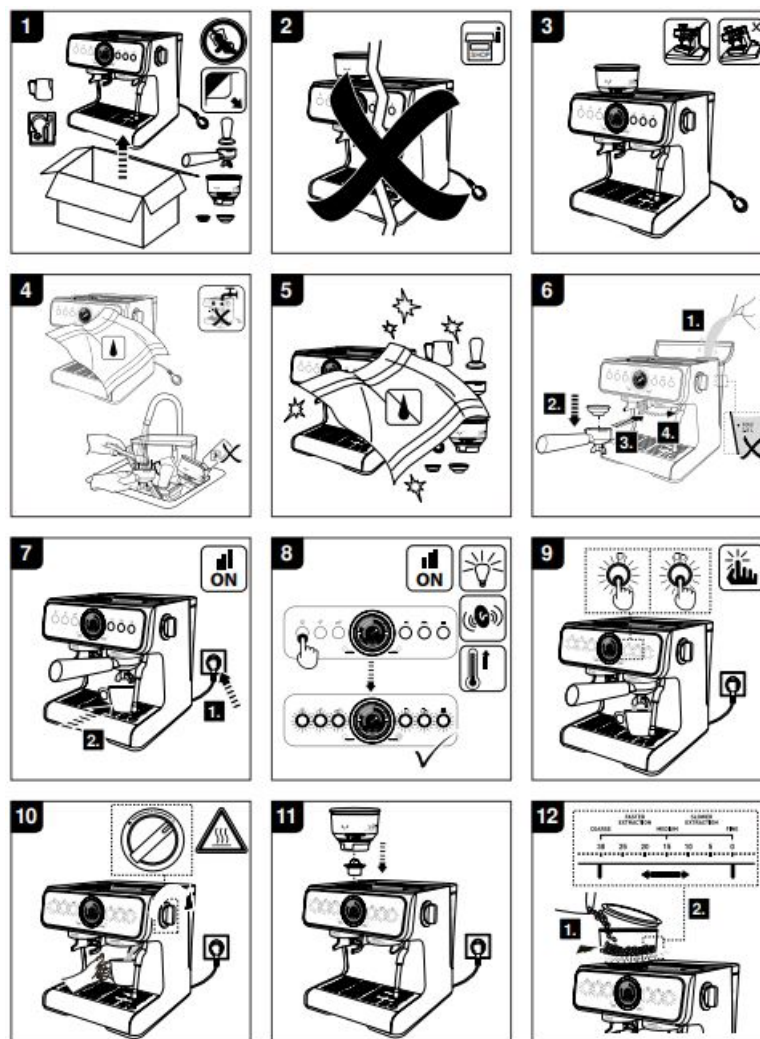
Customers from Germany and Austria: For repair and service, please send GASTROBACK® products to the following address:

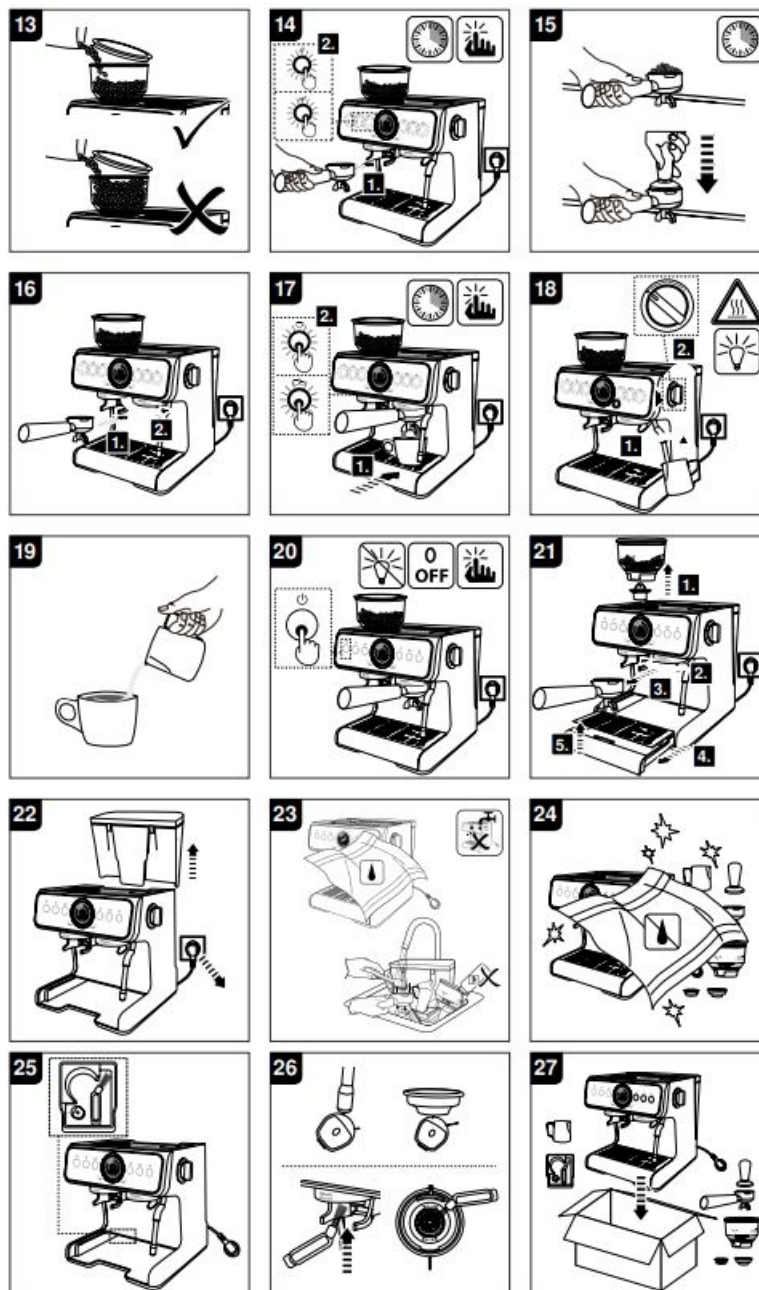
GASTROBACK GmbH, Gewerbestr. 20, D-21279 Hollenstedt, Germany.

Customers from other countries: Please contact your dealer.

Please agree that we cannot bear the charge of receipt. Submission of appliances: Please ensure packing the appliance ready for shipment without accessories. Add the sales slip and a short fault description. The processing time after receipt of the defective appliance will be approx. 2 weeks; we will inform you automatically. After the warranty period, please send defective appliances to the given address. You will get a free quotation and, thereafter, can decide, whether we shall repair the appliance to the costs possibly accrued, send back the defective appliance for free of charge, or dispose of the appliance for free of charge.

The appliance is intended for household use only and NOT suited for commercial usage. Do not attempt to use this appliance in any other way or for any other purpose than the intended use, described in these instructions. Any other use is regarded as unintended use or misuse, and can cause severe injuries or damage. There is no warranty claim of the purchaser if any injuries or damages are caused by unintended use.





GASTROBACK GmbH

Gewerbestraße 20 • 21279 Hollenstedt / Germany

Phone + 49 (0) 41 65 / 22 25 – 0 • Fax + 49 (0) 41 65 / 22 25 -29 info@gastroback.de



www.gastroback.de/en/

Documents / Resources



[GASTROBACK 42626 Espresso Machine](#) [pdf] Instruction Manual 42626 Espresso Machine, 42626, Espresso Machine, Machine

References

- [GB GASTROBACK®](#)
- [GB GASTROBACK®](#)