

**GASTROBACK®**  
**42626 5 L**  
**Design**  
**Multichopper**  
**Professional**



# GASTROBACK 42626 5 L Design Multichopper Professional Instruction Manual

[Home](#) » [GASTROBACK](#) » GASTROBACK 42626 5 L Design Multichopper Professional Instruction Manual 

## Contents

- 1 GASTROBACK 42626 5 L Design Multichopper Professional
- 2 Product Information
- 3 Operating Instructions
- 4 FAQ
- 5 DESCRIPTION
- 6 ELECTRICAL SAFETY
- 7 THE APPLIANCE
- 8 Using Instructions
- 9 OPERATION
- 10 AFTER USE
- 11 WARRANTY
- 12 CONTACT
- 13 Documents / Resources
  - 13.1 References

**GASTROBACK®**

GASTROBACK 42626 5 L Design Multichopper Professional



## Product Information

- This appliance is designed for chopping foodstuffs for private use only.
- It is important to follow the instructions provided in the manual to prevent damage or injury.
- Remove all packaging materials.
- Read all information provided in the manual before using the device.

## Operating Instructions

- Ensure all components are properly assembled before operation.
- Use the device only as described in the manual to avoid damage or injury.
- If blades get stuck or operate slowly, immediately stop the device.
- After each use, make sure to clean the appliance properly according to the cleaning instructions provided in the manual to maintain hygiene and prolong the product's lifespan.
- Avoid contact with sharp elements and moving parts to prevent injury.
- Wait for all components to stop completely before touching them.
- Only use the appliance in dry indoor rooms as it is classified as protection class II.

## FAQ

- **Q:** Can this appliance be used for professional operations?
- **A:** No, this appliance is intended for private use only and not for professional operations.
- **Q:** What should I do if the blades get stuck during operation?
- **A:** If the blades get stuck or operate slowly, stop the device immediately to prevent damage. Refer to the manual for instructions on resolving blade issues.

- **Q:** How do I ensure electrical safety when using this appliance?
- **A:** Make sure to use the appliance in dry indoor rooms and follow all electrical safety instructions provided in the manual, including proper handling of components and switches.

## DESCRIPTION

- This appliance is only intended for chopping foodstuffs.
- The appliance is intended for private use and not for professional operation.
- The appliance is intended for indoor use only. Use the appliance only as described in this manual. Any other use might lead to damage of the appliance, property or personal injury.
- No liability will be accepted for damage resulting from improper use or non-compliance with this manual.

## SAFETY WARNINGS

IMPORTANT SAFETY INSTRUCTIONS! READ CAREFULLY AND KEEP FOR FUTURE REFERENCE! PAY PARTICULAR ATTENTION TO ALL FIGURES ON THE ILLUSTRATION PAGE!



- Read this instruction manual carefully before using the appliance.

Familiarise yourself with the operation, adjustments and functions of switches. Internalise and follow the safety and operation instructions in order to avoid possible risks and hazards.



- Remove all packaging materials.



- **WARNING – DANGER OF SUFFOCATION!** Packaging materials are not toys. Children should not play with the packaging materials, as they pose a risk of swallowing and suffocation!



- **WARNING!** Switch the appliance off and disconnect it from the power supply before replacing attachments, cleaning work and when not in use.



- **WARNING – RISK OF ELECTRIC SHOCK!** Protect the appliance and its electrical parts against moisture. Do not immerse the appliance and its electrical parts in water or other liquids to avoid electrical shock. Never hold the appliance under running water. Pay attention to the instructions for cleaning and care.



- Do not operate the appliance with wet hands or while standing on a wet floor. Do not touch the power plug with wet hands.



- **WARNING – DANGER OF INJURY!** Take care to avoid injury from sharp elements.






- **STOP WARNING – DANGER OF INJURY!** Avoid contacting moving parts. Wait until all components have completely stopped before touching them.



- This appliance is classified as protection class II. This means the product is equipped with enhanced or

double insulation between the mains supply circuit and the output voltage or the metallic casing.

-  Only use in dry indoor rooms.
-  Dry
-  Damp

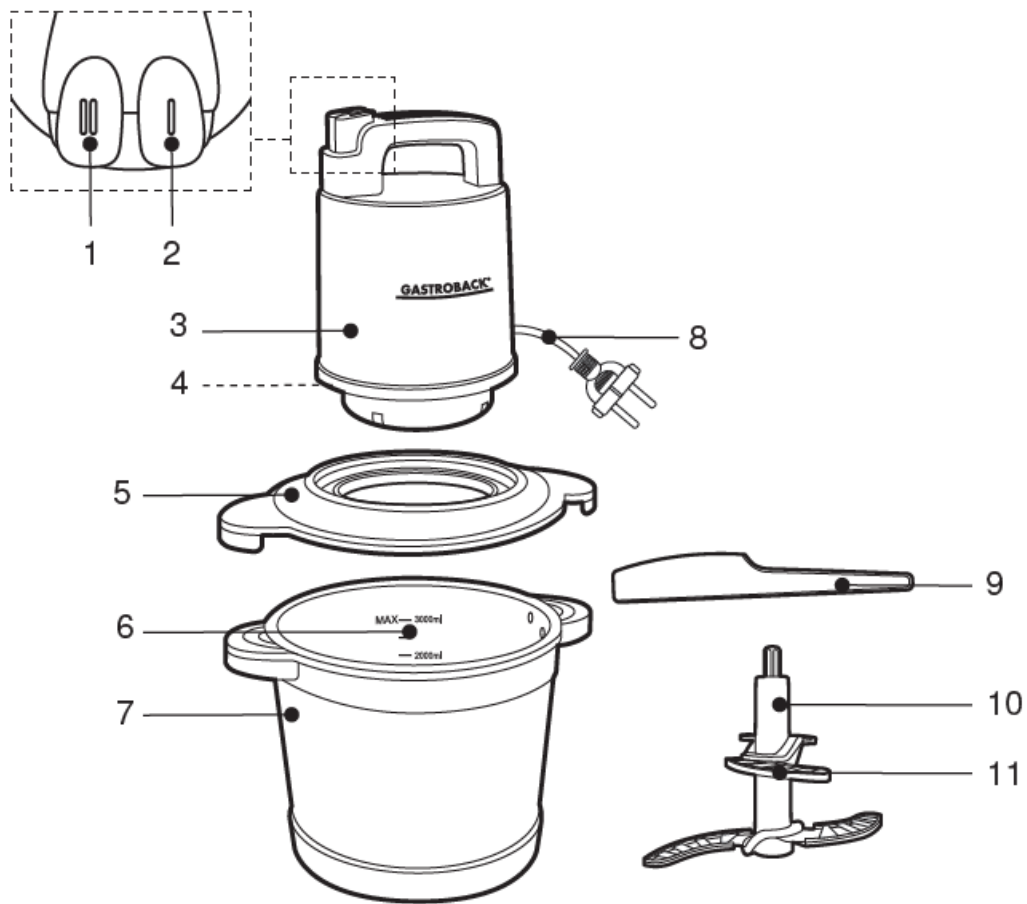
1. READ ALL INFORMATION BEFORE USE.
2. This appliance shall not be used by children. Keep the appliance and its cord out of reach of children.
3. Cleaning and user maintenance shall not be done by children.
4. The appliance can be used by persons with reduced physical, sensory, or mental capabilities or lack of experience and knowledge if they have been given supervision or instruction concerning the use of the appliance in a safe way and if they understand the hazards involved.
5. Children shall not play with the appliance.
6. Regularly check the power plug and power cord for damage. If the supply cord is damaged, it must be replaced by the manufacturer, its service agent, or similarly qualified persons in order to avoid a hazard.
7. **WARNING!** Do not operate the appliance for more than 15 seconds continuously. Allow the appliance to rest for 2 minutes between each cycle. This prevents damage to the motor from overheating.
8. Never use accessories other than those supplied with the appliance.  
They could pose a safety risk to the user and might damage the appliance. Only use original parts and accessories.
9. **WARNING!** Misuse may lead to injury. Use this appliance solely by these instructions. Do not attempt to modify the appliance in any way.
10. Care shall be taken when handling the sharp cutting blades, emptying the bowl, and cleaning.
11. Be careful if hot liquid is poured into the food processor as it can be ejected out of the appliance due to a sudden steaming.
12. Always disconnect the appliance from the supply if it is left unattended and before assembling, disassembling or cleaning.
13. Regarding the instructions for cleaning surfaces in contact with food, please refer to the chapter "After use".
14. Switch off the appliance and disconnect from the supply before changing accessories or approaching parts that move in use.
15. This appliance is intended to be used in household and similar applications such as:
  - staff kitchen areas in shops, offices, and other working environments;
  - farmhouses;
  - by clients in hotels, motels, and other residential-type environments; • bed and breakfast-type environments.
16. This appliance is not intended to be operated using an external timer or a separate remote-control system.
17. **DANGER OF ELECTRIC SHOCK!** Do not attempt to repair the appliance yourself. In case of malfunction, repairs are to be conducted by qualified personnel only.
18. Protect the appliance against dust, direct sunlight, dripping, and splashing water.
19. Do not pull the power plug out of the electrical outlet by the power cord and do not wrap the power cord around the appliance.

20. Always turn the appliance off before disconnecting the power plug.
21. Always place and operate the appliance on an even, stable, and dry surface.
22. Do not leave the appliance unattended during operation.
23. Dry the appliance and all accessories before connecting to the power supply and prior to attaching the accessories.
24. Connect the mains plug to an easily accessible socket, in order to quickly disconnect the appliance from the mains supply in an emergency.
25. If you use an extension cord or a multi-socket unit, it must have an appropriate power rating.
26. Leave at least 10 cm of free space around and above the appliance.  
Make sure that the appliance has sufficient space around it and does not come in contact with flammable material. The appliance must not be covered.
27. Keep hands and utensils out of the chopping bowl and away from the cutting blades to prevent the possibility of severe injury to persons or damage to the appliance. The scraper may be used only when the appliance is not running.
28. **RISK OF FIRE AND ELECTRIC SHOCK!** Oversized foods, metal utensils or other foreign objects must not be inserted into the chopping bowl.
29. Do not place paper, cardboard, plastic or similar materials inside the chopping bowl.
30. Do not store any foreign materials in the chopping bowl when the appliance is not in use.
31. If the blades get stuck or move noticeably slow, immediately stop operation.
32. Only use the appliance for processing food that is fit for consumption.  
Do not process hot food or liquid. Otherwise, high pressure could build up within the chopping bowl, causing injuries and damage.
33. Do not chop extremely hard food, such as ice cubes, frozen food, nutmeg, coffee beans, grains or bones.
34. Do not over-fill the chopping bowl (max. 3000 ml) and do not operate the appliance with an empty chopping bowl.
35. **CAUTION:** The blade unit is very sharp! Always hold it by the upper plastic part only.
36. Do not remove the lid while the appliance is operating.

## **ELECTRICAL SAFETY**

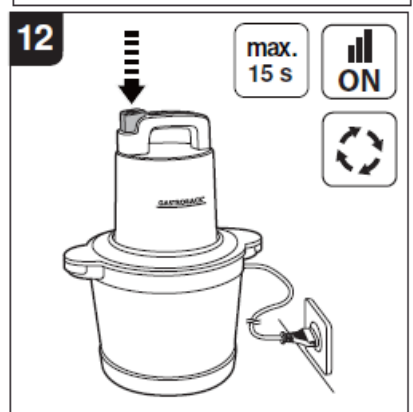
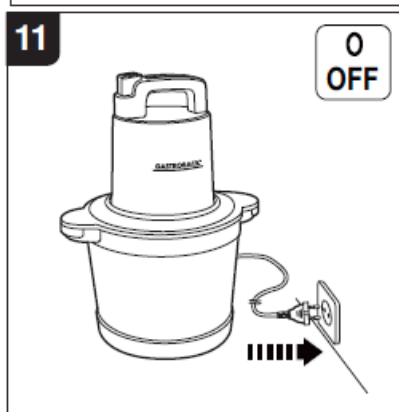
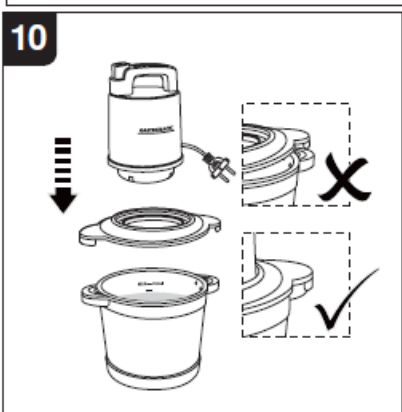
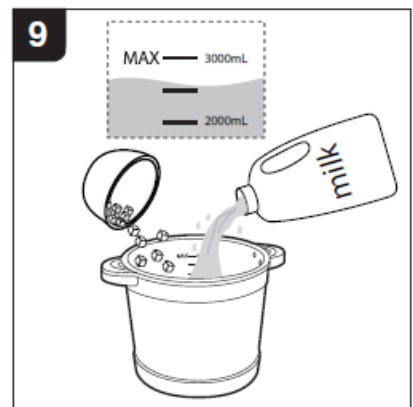
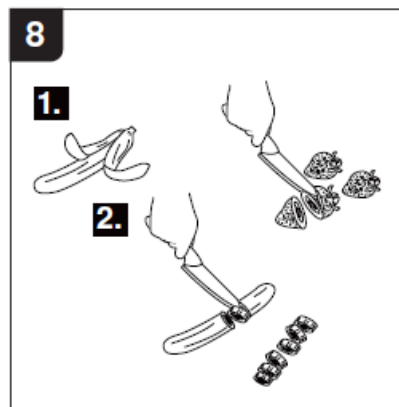
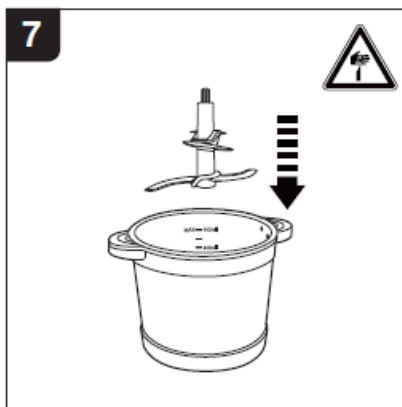
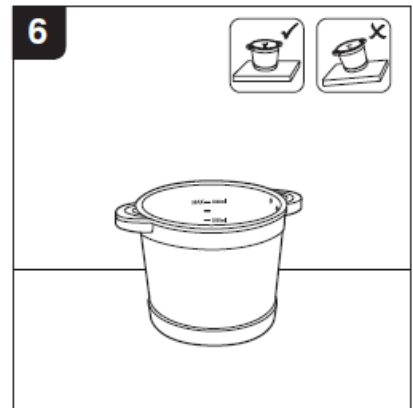
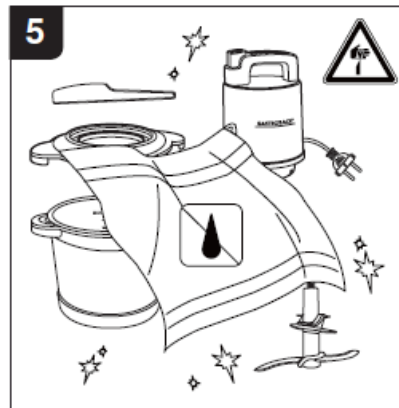
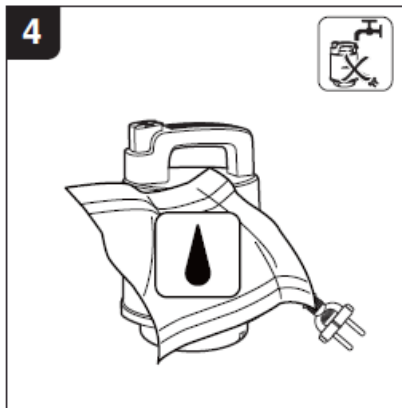
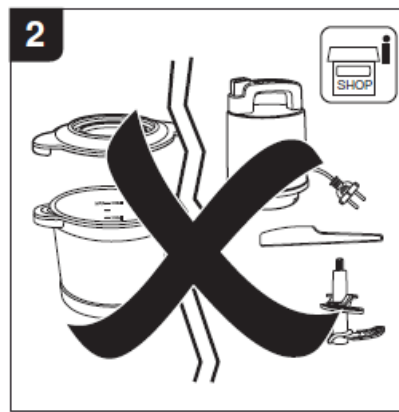
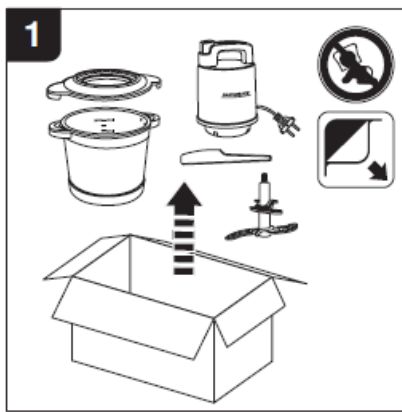
1. Ensure the rated voltage shown on the rating label corresponds with the voltage of the power supply.
2. Do not operate any appliance with a damaged power cord or plug, when the appliance malfunctions or has been damaged in any manner.
3. Protect the power cord against damage. Do not let it hang over sharp edges, do not squeeze or bend it. Keep the power cord away from hot surfaces and ensure that nobody can trip over it.
4. Do not open the housing under any circumstances. Do not insert fingers or foreign objects in any opening of the appliance and do not obstruct the air vents.
5. Protect the appliance against heat. Do not place close to open flames or heat sources such as stoves or heating appliances.

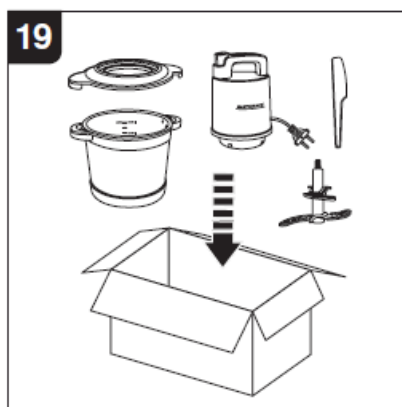
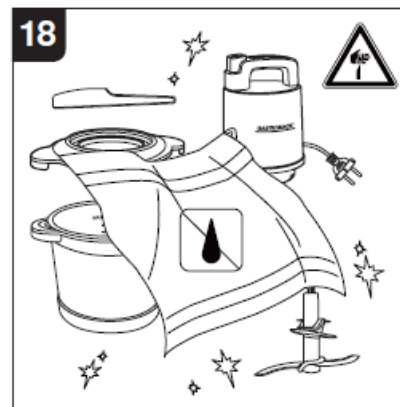
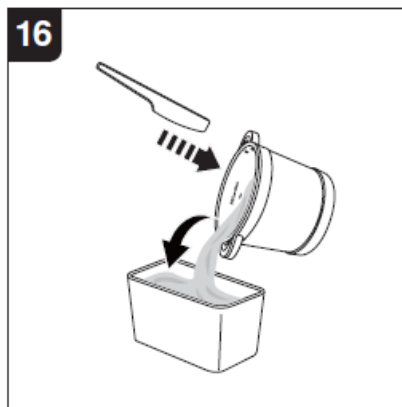
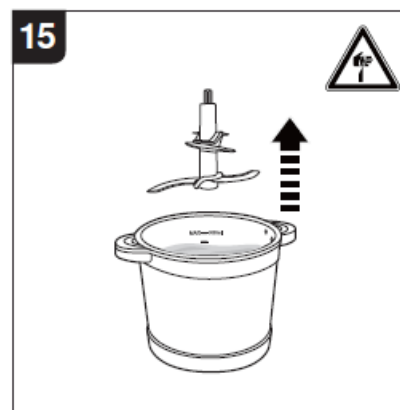
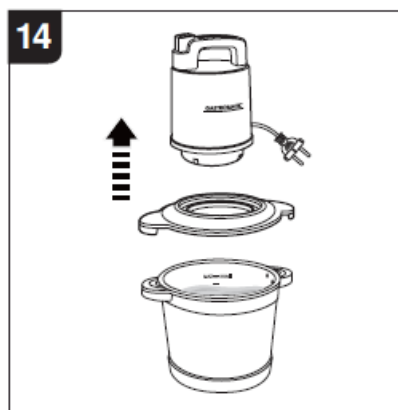
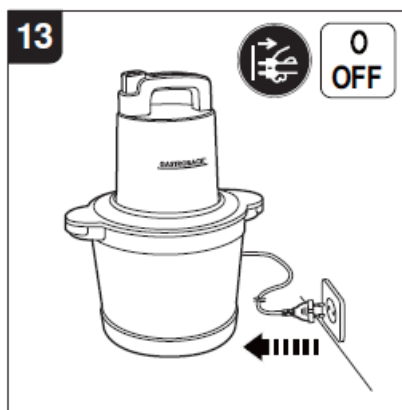
## **THE APPLIANCE**



1. Button II (high speed)
2. Button I (low speed)
3. Motor unit
4. Safety switch
5. Chopping bowl lid
6. Filling scale
7. Chopping bowl
8. Power cord with power plug
9. Scraper
10. Blade unit
11. Blades (with blade cover)

## Using Instructions





## BEFORE FIRST USE

1. Clean all parts of the appliance as described in the chapter "After use". Let all parts dry thoroughly.
2. The appliance is now ready to be used.

## OPERATION

### NOTES

- The appliance is equipped with a safety switch which prevents the appliance from turning on if the lid is not positioned correctly.
- Always insert the blade unit before filling in the food.
- If the blade unit does not turn or only turns slowly, pull the power plug out of the socket. Check whether there is any obstruction in the chopping bowl and remove it. Check whether the blade unit is positioned correctly and can move freely.
- If the blade unit does not reach its full speed within a few seconds, pull the power plug out of the socket and



take a part of the food out before continuing operation.

- If necessary, move food back to the middle of the chopping bowl with the included scraper.
- Even processing of food is reached by filling in pieces of the same size and not overfilling the chopping bowl beyond the MAX marking. Do not process more than 2500g of pork or more than 2400g of beef at a time. For vegetables and fruit, add a little water and don't exceed 1/2 filling capacity.
- If you want to puree food, it has to be cooked beforehand.

1. Press the blade unit down onto the pin inside the chopping bowl.
2. Prepare your food and fill it into the chopping bowl. Do not overfill.
3. Place the chopping bowl on an even, stable, and dry surface.
4. Place the lid on top of the chopping bowl. Ensure that it is placed correctly.
5. Place the motor unit on top of the lid, aligning the handles of the motor unit with the ones on the lid.
6. Connect the power plug to a suitable power outlet.
7. Hold the motor unit and the chopping bowl tightly and press button I or II to start the motor operation. The motor stops automatically when you release the button.
8. When your food reaches the desired consistency, release button I or II and unplug the appliance.
9. Take the motor unit off the lid, then remove the lid from the chopping bowl.
10. Pull out the blade unit from the chopping bowl, only then remove your food from the chopping bowl.

## **AFTER USE**

### **CLEANING**

#### **NOTE**

Clean the appliance after each use to keep it in a safe and hygienic working condition.

- Before cleaning, unplug the appliance and let it cool down completely.
- Do not clean the appliance with steel wool, strong chemicals, alkali, abrasive or disinfecting agents as they may damage its surface.
- Do not immerse the motor unit in water or other liquids to clean it. Make sure that no water enters the motor unit while cleaning it and that the electrical parts do not become wet or damp.
- Never clean the motor unit in the dishwasher.
- Clean the motor unit with a soft damp cloth and a little mild detergent. Wipe with a soft, dry cloth.
- Clean all parts besides the motor unit in warm water with a soft sponge and mild detergent after each use. Wipe with a dry and soft cloth.
- Be careful when cleaning the sharp cutting blades. To avoid injuries, the cleaning water should be very clear, so that you can see the blades when washing them.
- All parts besides the motor unit can also be cleaned in a dishwasher.
- Due to the processing of harder food, the chopping bowl may become dull with time. This is normal and does not interfere with its functionality.
- The appliance may only be used again after it is dried completely.

## **STORAGE**

- Before storage, always make sure that the appliance is completely dry, cooled down, and clean.
- Store the appliance in a cool, dry place, protected from moisture and out of the reach of children.

- Preferably store the appliance in its original packaging.

## ENVIRONMENTAL PROTECTION

This product has been designed to meet Commission Regulation (EU) 2023/826 with regard to ecodesign.

Mode	Power consumption (Watts)	Period (minutes)
Off	0.1	0

## NOTES FOR DISPOSAL

- Dispose of the appliance and packaging must be effected under the corresponding local regulations and requirements for electrical appliances and packaging. Please contact your local disposal company.
- Do not dispose of electrical appliances as unsorted municipal waste, use separate collection facilities. Contact your local government for information regarding the collection systems available. If electrical appliances are disposed of in landfills, dumps, or refuse incineration, hazardous substances can leak into the groundwater or can be emitted into the air, thus getting into the food chain, and damaging your health and well-being as well as poisoning flora and fauna. When replacing old appliances with new ones, the vendor is legally obligated to take back your old appliance for disposal at least for free of charge.



## INFORMATION AND SERVICE

- Please check [www.gastroback.de](http://www.gastroback.de) for further information.
- For technical support, please contact GASTROBACK® Customer Care Center by phone: +49 (0) 4165/22 25 – 0 or e-mail [info@gastroback.de](mailto:info@gastroback.de).
- Please refer to our home page for a copy of these operating instructions in PDF.

## WARRANTY

- We guarantee that all our products are free of defects at the time of purchase.
- Any demonstrable manufacturing or material defects will be to the exclusion of any further claim and within 2 years after purchasing the appliance free of charge repaired or substituted.
- There is no Warranty claim of the purchaser if the damage or defect of the appliance is caused by inappropriate treatment, overloading or installation mistakes.
- The Warranty claim expires if there is any technical interference of a third party without a written agreement. The purchaser has to present the sales slip in assertion-of-claim and has to bear all charges of costs and risk of the transport.

## NOTE

- Customers from Germany and Austria: For repair and service, please send GASTROBACK® products to the

following address:

- GASTROBACK GmbH, Gewerbestr. 20, D-21279 Hollenstedt, Germany.
- Customers from other countries: Please contact your dealer.

Please agree that we cannot bear the charge of receipt. Submission of appliances: Please ensure packing the appliance ready for shipment without accessories. Add the sales slip and a short fault description. The processing time after receipt of the defective appliance will be approx. 2 weeks; we will inform you automatically. After the warranty period, please send defective appliances to the given address. You will get a free quotation and, thereafter, can decide, whether we shall repair the appliance to the costs possibly accrued, send back the defective appliance free of charge, or dispose of the appliance free of charge.

The appliance is intended for household use only and NOT suited for commercial usage. Do not attempt to use this appliance in any other way or for any other purpose than the intended use, described in these instructions. Any other use is regarded as unintended use or misuse and can cause severe injuries or damage. There is no warranty claim of the purchaser if any injuries or damages are caused by unintended use.

220 - 240  
V ~

50 - 60  
Hz

1600 W

IPX0

max.  
3000 ml

< 85  
dB (A)



## CONTACT

- GASTROBACK GmbH
- Gewerbestraße 20
- 21279 Hollenstedt / Germany
- Phone + 49 (0) 41 65 / 22 25 – 0
- Fax + 49 (0) 41 65 / 22 25 -29
- [info@gastroback.de](mailto:info@gastroback.de)
- [www.gastroback.de](http://www.gastroback.de).



- [www.gastroback.de/en/](http://www.gastroback.de/en/).



## Documents / Resources



[GASTROBACK 42626 5 L Design Multichopper Professional](#) [pdf] Instruction Manual  
42626 5L Design Multichopper Professional, 42626, 5L Design Multichopper Professional, Design Multichopper Professional, Multichopper Professional, Professional

## References

- [GASTROBACK®](#)
- [GASTROBACK®](#)
- [User Manual](#)

### [Manuals+](#), [Privacy Policy](#)

This website is an independent publication and is neither affiliated with nor endorsed by any of the trademark owners. The "Bluetooth®" word mark and logos are registered trademarks owned by Bluetooth SIG, Inc. The "Wi-Fi®" word mark and logos are registered trademarks owned by the Wi-Fi Alliance. Any use of these marks on this website does not imply any affiliation with or endorsement.