



garth Fascia Replace Instructions

[Home](#) » [garth](#) » garth Fascia Replace Instructions 

Contents

- [1 garth Fascia Replace](#)
- [2 Product Information](#)
- [3 Product Usage Instructions](#)
- [4 How to replace the fascia](#)
- [5 Documents / Resources](#)



garth Fascia Replace



Product Information

The product is a fascia replacement for a specific device. The fascia is the front panel of the device that often contains control knobs and buttons. This user manual provides step-by-step instructions on how to replace the fascia.

Product Usage Instructions

1. **Step 1:** Remove the regulator as shown in the image.
2. **Step 2:** Take out all the knobs.
3. **Step 3:** Remove all screws from the knob bezel.
4. **Step 4:** Take out the side burner injector nut as shown in the picture.
5. **Step 5:** Take out the bolts as shown in the picture.
6. **Step 6:** Take out the bolts as shown in the picture.
7. **Step 7:** Gently draw the fascia out.
8. **Step 8:** Replace with a new fascia.
9. **Step 9:**
 1. Reverse steps above to re-install the parts. Please pay attention when installing the fascia so that each injector on the manifold coincides with the burner inlets.
 2. Conduct a leak test for the regulator.

How to replace the fascia

- Step 1:
Remove the regulator as shown in the image.



- Step 2:
Take out all the knobs.



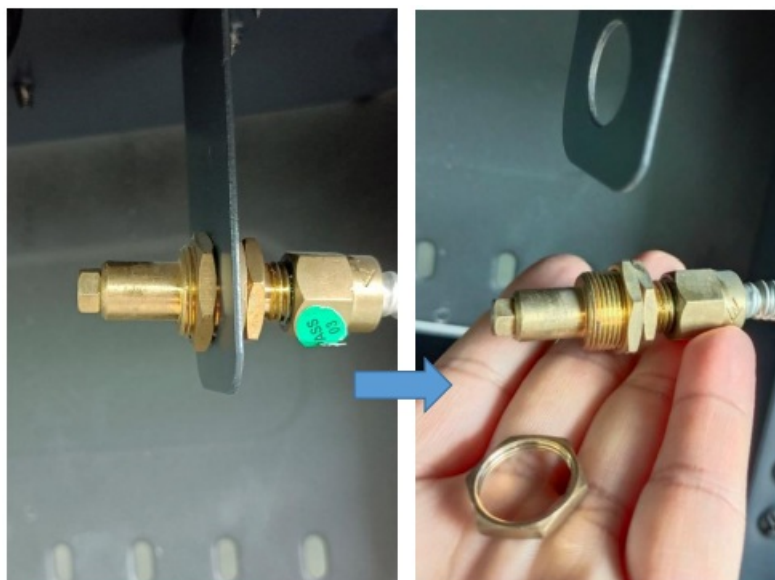
- Step 3:

Remove all screws from the knob bezel.



- Step 4:

Take out the side burner injector nut as the picture shows on.



- Step 5:

Take out the bolts as the picture shows.



- Step 6:

Take out the bolts as the picture shows.



- Step 7:

Gently draw the fascia out.

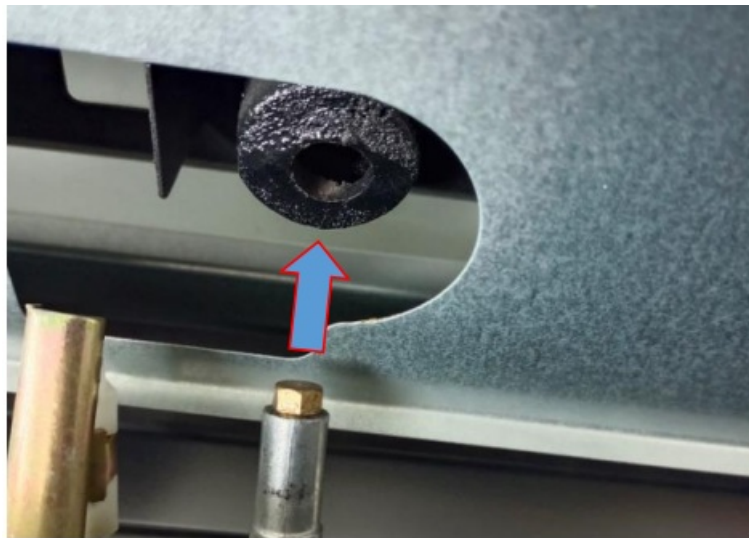


- Step 8:



Replace with a new fascia.



- Step 9:
 - A. Reverse steps above to re-install the parts. Please pay attention when installing the fascia so that each injector on the manifold coincide with the burner inlets.
 - B. Conduct a leak test for the regulator.



Documents / Resources

 	<p>garth Fascia Replace [pdf] Instructions Fascia Replace, Fascia, Replace</p>
---	--