



Garmin Drive 52, GPS Navigator with 5" Display-Complete Features/User Manual

[Home](#) » [Garmin](#) » Garmin Drive 52, GPS Navigator with 5" Display-Complete Features/User Manual 

Contents

- 1 [Garmin Drive 52, GPS Navigator with 5" Display](#)
- 2 [Specifications](#)
- 3 [Introduction](#)
 - 3.1 [Getting started](#)
- 4 [Garmin Drive 52 / Garmin Drive 5 Pro device overview](#)
- 5 [Mounting and powering the Garmin Drive device in your vehicle](#)
- 6 [Turning the device on or off](#)
- 7 [Using the on-screen buttons](#)
- 8 [Adjusting the volume](#)
- 9 [Driver awareness features and alerts](#)
- 10 [Enabling or disabling audible driver alerts](#)
- 11 [Red light and speed cameras](#)
- 12 [Finding and saving locations](#)
- 13 [Finding an address](#)
- 14 [Location Search Results](#)
- 15 [Location Search Results on the Map](#)
- 16 [Changing the search area](#)
- 17 [Points of Interest](#)
- 18 [Exploring a venue](#)
- 19 [Finding a junction](#)
- 20 [Parking](#)
- 21 [Viewing history](#)
- 22 [Navigating to your destination](#)
- 23 [Taking a Detour](#)
- 24 [Using the Map](#)
- 25 [Map Tools](#)
- 26 [Up ahead](#)
- 27 [Trip information](#)
- 28 [Traffic](#)
- 29 [Receiving traffic data using a traffic receiver](#)
- 30 [Receiving Traffic Data Using Smartphone Link](#)
- 31 [Connecting to Smartphone Link](#)
- 32 [Using the apps](#)
- 33 [Trip planner](#)

- 34 [Garmin Drive settings](#)
- 35 [Driver Assistance Settings](#)
- 36 [Proximity alerts settings](#)
- 37 [Backup camera settings](#)
- 38 [Units and time settings](#)
- 39 [Device and privacy settings](#)
- 40 [Device information](#)
- 41 [Device maintenance](#)
- 42 [Device Care](#)
- 43 [Cleaning the outer casing](#)
- 44 [Avoiding theft](#)
- 45 [Restarting the Device](#)
- 46 [Removing the Device, Mount and Suction Cup](#)
- 47 [Troubleshooting](#)
- 48 [My device is not acquiring satellite signals](#)
- 49 [The device does not charge in my vehicle](#)
- 50 [My battery does not stay charged for very long](#)
- 51 [Appendix](#)
- 52 [Data management](#)
- 53 [Viewing GPS signal status](#)
- 54 [Frequently Asked Questions](#)
- 55 [Related Posts](#)



Garmin Drive 52, GPS Navigator with 5" Display



Specifications

- **Dimensions**
5.5 x 0.8 x 3.3 inches
- **Weight**
13.6 ounces
- **Batteries**

1 A batteries required

- **Connectivity technologies**

USB

- **Device interface – primary**

Touchscreen

- **Screen Size**

5 Inches

- **Human Interface Input**

Touchscreen

- **Map Type**

City Tour, Street

- **Battery Life**

1 Hours

- **Scanner Resolution**

480 x 272

- **Brand**

Garmin

Introduction

Getting started

WARNING

See the Important Safety and Product Information guide in the product box for product warnings and other important information.

- Update the maps and software on your device (Updating Maps and Software with Garmin Express, page 14).
- Mount the device in your vehicle and connect it to power (Mounting and powering the Garmin Drive device in your vehicle, page 1).
- Acquire GPS signals (Acquiring GPS signals, page 1).
- Adjust the volume (Adjusting the volume, page 2) and display brightness (Adjusting the screen brightness, page 2).
- Navigate to your destination (Starting a route, page 6).

Garmin Drive 52 / Garmin Drive 5 Pro device overview



	power key
	USB power and data port
	Map and data memory card slot

Mounting and powering the Garmin Drive device in your vehicle

WARNING

This product contains a lithium-ion battery. To prevent the possibility of personal injury or product damage caused by battery exposure to extreme heat, store the device out of direct sunlight.

Before you use your device on battery power, you should charge it.

1. Plug the vehicle power cable into the USB port on the device.



2. Press the mount onto the suction cup until it snaps into place.
3. Press the suction cup to the windscreen and flip the lever back toward the windscreen.
4. Fit the tab on the top of the mount into the slot on the back of the device.
5. Press the bottom of the mount into the device until it clicks.
6. Plug the other end of the vehicle power cable into a power outlet in your vehicle.

Turning the device on or off

- To turn the device on, press the power key or connect the device to power.



- To put the device in power saving mode, press the power key while the device is on.
While in power saving mode, the screen is off and the device uses very little power, but it can wake instantly for use.
TIP: you can charge your device faster by putting it in power-saving mode while charging the battery.
- To turn off the device completely, hold the power key until a prompt appears on the screen, then select Off.
The prompt appears after five seconds. If you release the power key before the prompt appears, the device enters power-saving mode.

Acquiring GPS signals

When you turn on your navigation device, the GPS receiver must collect satellite data and establish the current location. The time required to acquire satellite signals varies based on several factors, including how far you are from the location where you last used your navigation device, whether you have a clear view of the sky, and how long it has been since you last used your navigation device. The first time you turn on your navigation device, it may take several minutes to acquire satellite signals.

1. Turn on the device.
2. Wait while the device locates satellites.
3. If necessary, go to an open area away from tall buildings and trees. In the status bar, the satellite signal strength is indicated. When at least half of the bars are filled, the device is ready for navigation.

Status bar icons

The status bar is located at the top of the main menu. The status bar icons display information about features on the device. You can select some icons to change settings or view additional information.

- GPS signal status. Hold to view GPS accuracy and acquired satellite information (Viewing GPS signal status, page 16).
- Current time. Select to set the time (Setting the Time, page 13).
- Battery charge level.

Using the on-screen buttons

On-screen buttons allow you to navigate the pages, menus, and menu options on your device.

- Select to return to the previous menu screen.

- Hold to quickly return to the main menu.
- Select or to scroll through lists or menus.
- Hold or to scroll faster.
- Select to see a context-based menu of options for the current screen.

Adjusting the volume

1. Select Volume.
2. Select an option:
 1. Use the slider bar to adjust the volume.
 2. Select to mute the device.
 3. Select for additional options.

Adjusting the screen brightness

1. Select Settings > Display > Brightness.
2. Use the slider bar to adjust the brightness.

Driver awareness features and alerts

CAUTION

The driver alerts and speed limit features are for information only. They do not replace your responsibility to abide by all posted speed limit signs and to use safe driving judgment at all times. Garmin® is not responsible for any traffic fines or citations that you receive for failing to follow all applicable traffic laws and signs.

Your device provides features that can help encourage safer driving and increase efficiency, even when you are driving in a familiar area. The device plays an audible tone or message and displays information for each alert. You can enable or disable the audible tone for some types of driver alerts. Not all alerts are available in all areas.

Schools: the device plays a tone and displays the distance to and speed limit (if available) for an upcoming school or school zone.

Speed limit reduction: the device plays a tone and displays the upcoming reduced speed limit so you can be prepared to reduce your speed.

Speed limit exceeded: the device plays a tone and displays a red border on the speed limit icon when you exceed the posted speed limit for the current road.

Speed limit change: the device plays a tone and displays the upcoming speed limit so you can be prepared to adjust your speed.

Wrong way on a one-way street: the device plays a message and displays a full-screen warning if you travel the wrong way on a one-way street. The edges of the screen appear red and an alert remains at the top of the screen until you leave the one-way street or correct your direction of travel.

Level crossing: the device plays a tone and displays the distance to an upcoming level crossing.

Animal Crossing: the device plays a tone and displays the distance to an upcoming animal crossing area.

Bends: the device plays a tone and displays the distance to a curve in the road.

Slower traffic: the device plays a tone and displays the distance to slower traffic when you approach slower traffic at a higher speed. Your device must be receiving traffic information to use this feature (Traffic, page 10).

Fatigue warning: the device plays a tone and suggests upcoming rest stops after you have been driving for more than two hours without stopping.

Enabling or disabling audible driver alerts

You can enable or disable the audible tone for some types of driver alerts. The visual alert appears even when the tone is disabled.

1. Select Settings > Driver Assistance > Driver Alerts.
2. Select or clear the tick box next to each alert.

Red light and speed cameras

NOTICE

Garmin is not responsible for the accuracy of or the consequences of using a red light or speed camera database.

NOTE:

this feature is not available for all regions or product models. Information about red light and speed camera locations is available in some areas for some product models. The device alerts you when you approach a reported speed or red light camera.

- To maintain an updated database of red light and speed camera locations, your device must have an active subscription to download and store safety camera data. Go to garmin.com/speedcameras to check availability and compatibility, or to purchase a subscription or one-time update. You can purchase a new region or extend an existing subscription at any time.

NOTE: in some regions, some product bundles include pre-loaded red light and speed camera data with subscription-free updates.

- You can use the Garmin Express™ software (garmin.com/express) to update the camera database stored on your device. You should update your device frequently to receive the most up-to-date camera information.

Finding and saving locations

The maps loaded in your device contain locations, such as restaurants, hotels, vehicle services, and detailed street information. The Where To? menu helps you find your destination by providing several methods to browse, search, and save this information.

From the main menu, select Where To?.

- To quickly search all locations on your device, select Search (Finding a location using the search bar, page 3).
- To find an address, select Address (Finding an address, page 3).
- To browse or search pre-loaded points of interest by category, select Categories (Finding a location by category, page 3).
- To search near a different town or area, select next to the current search area (Changing the search area, page 3).

- To view and edit your saved locations, select Favourites (Saving Locations, page 5).
- To view locations you have recently selected from the search results, select History (Viewing history, page 5).
- To browse, search and check in to Foursquare® points of interest, select Foursquare® (Searching Foursquare points of interest, page 4).
- To browse and search TripAdvisor® points of interest and reviews, select TripAdvisor (TripAdvisor, page 4).
- To browse and search HISTORY® points of interest, photos and information, select History® (Finding HISTORY points of interest, page 4).
- To find national parks and explore park maps, select National Parks (Finding National Parks, page 4).
- To navigate to specific geographic coordinates, select Coordinates (Finding a location using coordinates, page 4).

Finding a location using the search bar

You can use the search bar to search for locations by entering a category, brand name, address or town name.

1. Select Where To?.
2. Select Search in the search bar.
3. Enter all or part of the search term Suggested search terms appear below the search bar.
4. Select an option
 1. To search for a type of business, enter a category name (for example, "cinemas").
 2. To search for a business name, enter all or part of the name.
 3. To search for an address near you, enter the house number and street name.
 4. To search for an address in another town, enter the house number, street name, town and county.
 5. To search for a town, enter the town and county.
 6. To search for coordinates, enter latitude and longitude coordinates.
5. Select an option:
 1. To search using a suggested search term, select the term.
 2. To search using the text you entered, select.
6. If necessary, select a location.

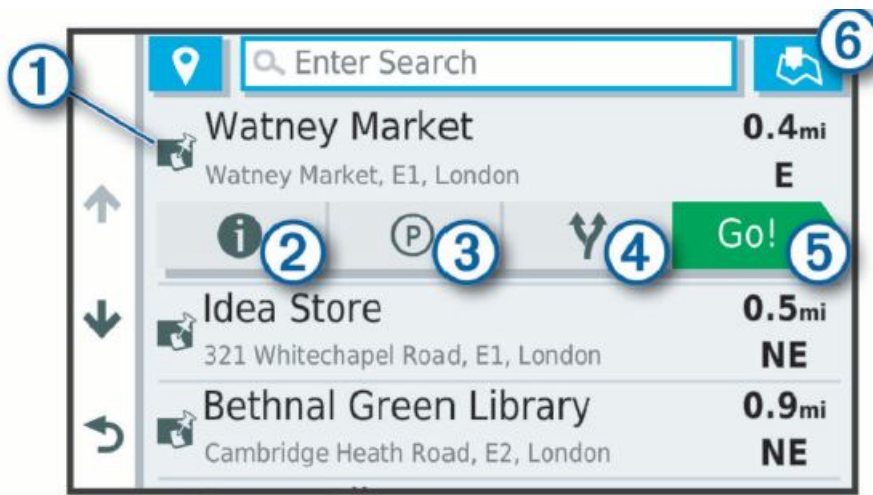
Finding an address

NOTE: the order of the steps may change depending on the map data loaded on your device.

1. Select Where To?.
2. If necessary, select to search near a different town or area.
3. Select Address.
4. Follow the on-screen instructions to enter address information
5. Select the address.

Location Search Results

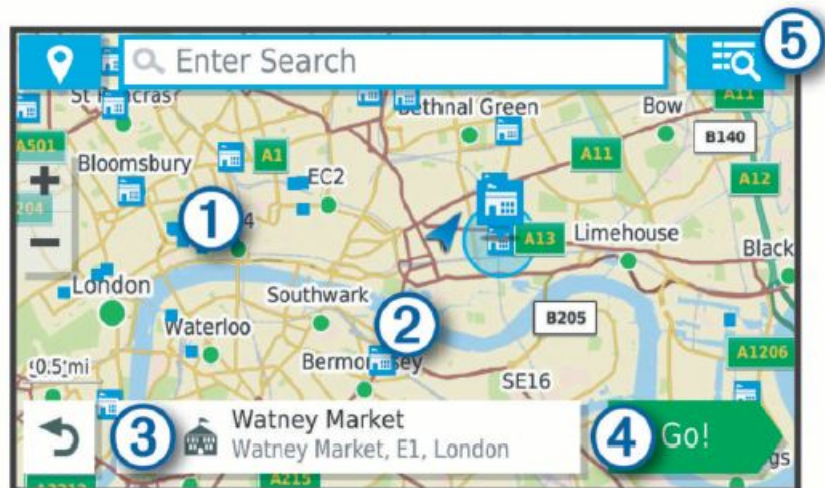
By default, the location search results appear in a list, with the nearest location at the top. You can scroll down to view more results.



1. Select a location to view the option menu.
2. Select to view detailed information about the selected location.
3. Select to find parking areas near the location.
4. Select to view alternate routes to the locations.
5. Select to start navigating to the location using the recommended route.
6. Select to view the search results on the map.

Location Search Results on the Map

You can view the results of a location search on the map instead of in a list. From the location search results, select . The nearest location appears at the centre of the map, and basic information about the selected location appears at the bottom of the map.

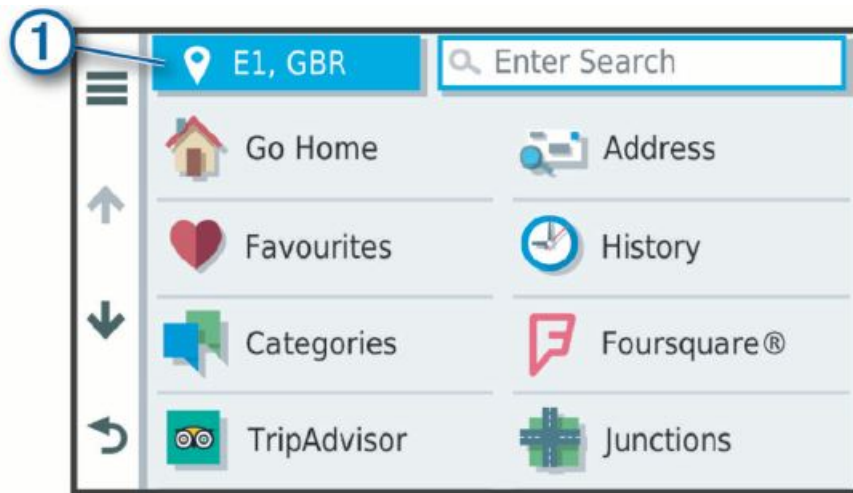


- Drag the map to view additional search results.
- Additional search results. Select to view another location.
- Selected location summary. Select to view detailed information about the selected location.
- Select to start navigating to the location using the recommended route.
- Select to view the search results in a list.

Changing the search area

By default, the device searches for locations near your current location. You can also search other areas, such as near your destination, near another city, or along your active route.

1. Select Where To?.
2. Select next to the current search area .



- Select a search area.
- If necessary, follow the on-screen instructions to select a specific location.

The selected search area appears next to . When you search for a location using any of the options in the Where To? menu, the device suggests locations near this area first

Points of Interest

A point of interest is a place that you may find useful or interesting. Points of interest are organised by category and can include popular travel destinations such as petrol stations, restaurants, hotels, and entertainment venues.

Finding a location by category

1. Select Where To?.
2. Select a category or select Categories.
3. If necessary, select a subcategory.
4. Select a location.

Searching within a category

After you have performed a search for a point of interest, certain categories may display a Quick Search list that shows the last four destinations you selected.

1. Select Where To? > Categories.
2. Select a category.
3. Select an option
 1. Select a destination from the quick search list on the right side of the screen. The quick search list provides a list of recently found locations in the selected category.
 2. Select a subcategory, if necessary, and select a destination.

Finding National Parks

Device models that include maps for North America or the United States also include detailed information for national parks in the United States. You can navigate to a national park or to a location within a national park.

1. Select **Where To? > National Parks**. A list of national parks appears, with the nearest park at the top.
2. Select **Search**, and enter all or part of the park name to narrow the results (optional).
3. Select a national park. A list of categories for locations of features and amenities within the park appears below the park name.
4. Select an option:
 1. To start navigating to the park, select **Go!**.
 2. To view more park information or explore the park features and amenities, select **.**
 3. To quickly find a location within the park, select a category from the list below the park name and select a location.

Exploring National Park Features and Amenities

You can explore detailed information about the features and amenities available inside a national park and navigate to specific locations in the park. For example, you can find campgrounds, landmarks, visitor centres and popular attractions.

1. From the location search results, select a national park and select **.**
2. Select **Explore this Park**. A list of categories for park features and amenities appears.
3. Select a category.
4. Select a location and select **Go!**.

Finding HISTORY points of interest

NOTE: this feature is not available on all product models or for all map regions.

Your device includes HISTORY points of interest, which allow you to find and learn about historically significant locations and attractions, such as historic buildings, monuments, museums and notable locations of historic events.

1. Select **Where To? > History@**.
2. Select a category.
3. Select a location.
4. Select to view a photo and a short summary of the location's history.

Foursquare

Foursquare is a location-based social network. Your device includes pre-loaded Foursquare points of interest, which are indicated by the Foursquare logo in your location search results.

Searching Foursquare points of interest

You can search for Foursquare points of interest loaded on your device. Select **Where To? > Categories > Foursquare@**.

TripAdvisor

Your device includes TripAdvisor points of interest and ratings. TripAdvisor ratings appear automatically in the search results list for applicable points of interest. You can also search for nearby TripAdvisor points of interest and sort by distance or popularity.

Finding TripAdvisor points of interest

1. Select Where To? > Categories > TripAdvisor.
2. Select a category. A list of nearby TripAdvisor points of interest for the category appears.
3. Select Sort Results to sort the search results by distance or popularity (optional).

Navigating to points of interest within a venue

NOTE: this feature may not be available in all areas or for all product models.

You can create a route to a point of interest (POI) within a larger venue, such as a store in a shopping centre or a specific terminal in an airport.

1. Select Where To? > Search.
2. Select an option:
 1. To search for the venue, enter the name or address of the venue, select , and go to step 3.
 2. To search for the POI, enter the name of the POI, select , and go to step 5.
3. Select the venue. A list of categories appears below the venue, such as restaurants, car hire, or terminals.
4. Select a category.
5. Select the POI, and select Go!.

The device creates a route to the parking area or venue entrance closest to the POI. When you arrive at the destination, a chequered flag indicates the recommended parking area. A labelled point indicates the location of the POI within the venue.

Exploring a venue

NOTE: this feature may not be available in all areas or for all product models.

You can view a list of all points of interest located within each venue

1. Select a venue.
2. Select > Explore this Venue.

Search tools

Search tools allow you to search for specific types of locations by responding to on-screen prompts.

Finding a junction

You can search for a junction between two streets, motorways, or other roads.

1. Select Where To? > Categories > Junctions.
2. Follow the on-screen instructions to enter street information.
3. Select the junction.

Finding a location using coordinates

You can find a location using latitude and longitude coordinates.

1. Select Where To? > Coordinates.
2. If necessary, select and change the coordinate format or datum.
3. Enter the latitude and longitude coordinates.
4. Select View on Map

Parking

Your Garmin Drive device includes detailed parking data, which can help you find nearby parking based on the likelihood of available parking spots, type of parking area, price, or accepted payment methods.

Finding Parking Near Your Current Location

1. Select Where To? > Categories > Parking.
2. Select Filter Parking, and select one or more categories to filter parking by availability, type, price, or payment methods (optional).

NOTE: detailed parking data is not available in all areas or for all parking locations.

3. Select a parking location.
4. Select Go!

Finding Parking Near a Specified Location

1. Search for a location.
2. From the location search results, select a location.
3. Select A list of parking areas near the selected location appears.
4. Select Filter Parking, and select one or more categories to filter parking by availability, type, price, or payment methods (optional).

NOTE: detailed parking data is not available in all areas or for all parking locations

5. Select a parking location.
6. Select Go!.

Understanding Parking Colours and Symbols

Parking locations that include detailed parking data are colour-coded to show the likelihood of finding parking. Symbols indicate the type of parking available (street or car park), relative pricing information and payment type. You can view the legend for these colours and symbols on the device. From the parking search results, select .\

Viewing history

Your device stores a history of the last 50 locations you have found.
Select Where To? > History.

Clearing the list of recently found places

Select Where To? > History > Clear > Continue.

Viewing current location information

You can use the Where Am I? page to view information about your current location. This feature is helpful if you need to tell emergency personnel your location.

From the map, select the vehicle.

Finding emergency services and fuel

You can use the Where Am I? page to find the nearest hospitals, police stations, and fuel stations.

1. From the map, select the vehicle.
2. Select Hospitals, Police Station, Petrol Stations or Roadside Assist.

NOTE: some service categories are not available in all areas. |

A list of locations for the selected service appears, with the nearest locations at the top.

3. Select a location.
4. Select an option:
 1. To navigate to the location, select Go!.
 2. To view the phone number and other location details, select .

Getting directions to your current location

If you need to tell another person how to get to your current location, your device can give you a list of directions.

1. From the map, select the vehicle.
2. Select > Directions to Me.
3. Select a starting location.
4. Select Select.

Adding a shortcut

You can add shortcuts to the Where To? menu. A shortcut can point to a location, a category, or a search tool. The Where To? menu can contain up to 36 shortcut icons.

1. Select Where To? > Personalise.
2. Select an item.

Removing a shortcut

1. Select Where To? > Remove Shortcut(s).
2. Select a shortcut to remove.
3. Select the shortcut again to confirm.
4. Select Done.

Saving Locations

1. Search for a location (Finding a location by category,
2. From the search results, select a location.
3. Select > Save.
4. Enter a name and select Done.

Saving your current location

1. From the map, select the vehicle icon.
2. Select Save.
3. Enter a name and select Done.
4. Select OK.

Editing a favourite location

1. Select Where To? > Favourites.
2. If necessary, select a category.
3. Select a location.
4. Select .
5. Select > Edit.
6. Select an option:
 1. Select Name.
 2. Select Phone Number.
 3. Select Categories to assign categories to the saved location.
 4. Select Change Map Symbol to change the symbol used to mark the saved location on a map.
7. Edit the information.
8. Select Done

Assigning categories to a saved location

You can add custom categories to organise your saved locations.

NOTE: categories appear in the saved locations menu after you have saved more than 12 locations.

1. Select Where To? > Favourites.
2. Select a location.
3. Select .
4. Select > Edit > Categories.
5. Enter one or more category names, separate by commas. 6 If necessary, select a suggested category.
Select Done.

Deleting a favourite location

NOTE: deleted locations cannot be recovered.

1. Select Where To? > Favourites.
2. Select > Delete Favourite(s).
3. Select the box next to the saved locations to delete and select Delete.

Navigating to your destination

Routes

A route is a path from your current location to one or more destinations.

- The device calculates a recommended route to your destination based on the preferences you set, including

the route calculation mode (Changing the route calculation mode, page 8) and avoidances (Avoiding Delays, Tolls and Areas, page 8).

- You can start navigating to your destination quickly using the recommended route, or you can select an alternative route (Starting a route, page 6).
- If there are specific roads you need to use or avoid, you can customise the route (Shaping your route, page 7).
- You can add multiple destinations to a route (Adding a location to your route, page 7).

Starting a route

1. Select Where To?, and search for a location (Finding and saving locations, page 2).
2. Select a location.
3. Select an option:
 1. To start navigating using the recommended route, select Go!.
 2. To choose an alternative route, select , and select a route.
 3. Alternative routes appear to the right of the map.
 4. To edit the course of the route, select > Edit Route, and add shaping points to the route (Shaping your route, page 7).

The device calculates a route to the location and guides you using voice prompts and information on the map (Your route on the map, page 6). A preview of the major roads in your route appears at the edge of the map for several seconds. If you need to stop at additional destinations, you can add the locations to your route (Adding a location to your route, page 7).

Starting a route by using the map

You can start a route by selecting a location from the map.

1. Select View Map.
2. Drag and zoom the map to display the area to search.
3. If necessary, select to filter the displayed points of interest by category Location markers (or a blue dot) appear on the map.
4. Select an option
 1. Select a location marker.
 2. Select a point, such as a street, junction or address location.
5. Select Go!

Going home

The first time you start a route home, the device prompts you to enter your home location.

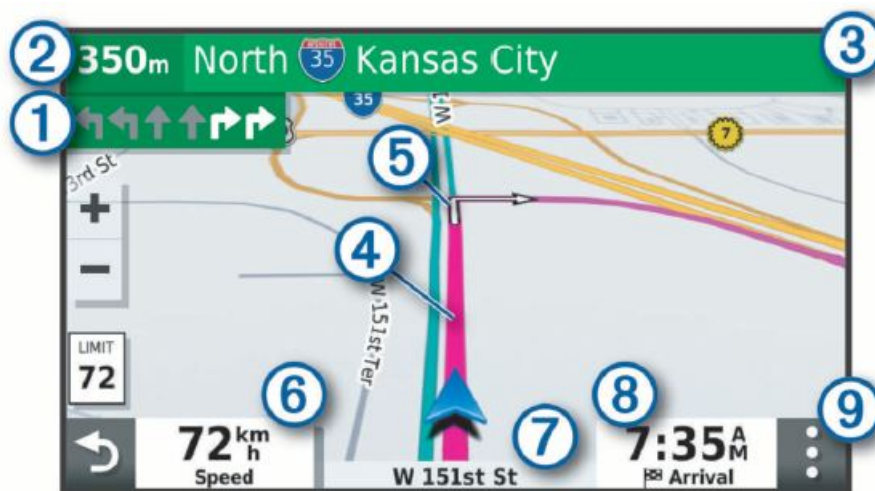
1. Select Where To? > Go Home.
2. If necessary, enter your home location.

Editing your home location

1. Select Where To? > Set Home Location.
2. Enter your home location.

Your route on the map

As you travel, the device guides you to your destination using voice prompts and information on the map. Instructions for your next turn or exit, or other actions appear across the top of the map.



1. Next action in the route. Indicates the next turn, exit, or other action and the lane in which you should travel, if available.
2. Distance to the next action.
3. Name of the street or exit associated with the next action.
4. Route highlighted on the map.
5. Next action in the route. Arrows on the map indicate the location of upcoming actions.
6. Vehicle speed.
7. Name of the road on which you are travelling.
8. Estimated arrival time.

TIP: you can touch this field to change the information it shows (Changing the map data field, page 10).

9. Map tools. Provides tools to show you more information about your route and surroundings.

Active lane guidance

As you approach some turns, exits, or interchanges in your route, a detailed simulation of the road appears beside the map, if available. A coloured line indicates the proper lane for the turn



Viewing turns and directions

While navigating a route, you can view upcoming turns, lane changes, or other directions for your route.

1. From the map, select an option:
 1. To view upcoming turns and directions as you navigate, select > Turns. The map tool displays the next four turns or directions beside the map. The list updates automatically as you navigate the route.

2. To view the complete list of turns and directions for the entire route, select the text bar at the top of the map.
2. Select a turn or direction (optional). Detailed information appears. An image of the junction may appear for junctions on major roads, if available.

Viewing the Entire Route on the Map

1. While navigating a route, select anywhere on the map.
2. Select .

Arriving at your destination

When you approach your destination, the device provides information to help you complete your route.

- indicates the location of your destination on the map, and a voice prompt announces you are approaching your destination.
- When you approach some destinations, the device automatically prompts you to search for parking. You can select Continue to find nearby parking areas (Parking Near Your Destination, page 7).
- When you stop at your destination, the device automatically ends the route. If the device does not detect your arrival automatically, you can select Stop to end your route.

Parking Near Your Destination

Your device can help you find a parking spot near your destination. When you approach some destinations, the device automatically prompts you to search for parking.

1. Select an option:
 1. When the device prompts you, select Continue to search for nearby parking.
 2. If the device does not prompt you, select Where To? > Categories > Parking, and select > My Destination.
2. Select Filter Parking, and select one or more categories to filter parking by availability, type, price, or payment methods (optional).

NOTE: detailed parking data is not available in all areas or for all parking locations.
3. Select a parking location, and select Go! > Add As Next Stop.

The device guides you to the parking area.

Finding your last parking spot

When you disconnect the device from vehicle power while the device is on, your current location is saved as a parking spot. Select Apps > Last Spot.

Changing Your Active Route

Adding a location to your route

Before you can add a location to your route, you must be navigating a route (Starting a route, page 6). You can add locations to the middle or end of your route. For example, you can add a petrol station as the next destination in your route.

TIP: to create complex routes with multiple destinations or scheduled stops, you can use the trip planner to plan,

schedule, and save a trip (Planning a trip, page 12).

1. From the map, select > Where To?.
2. Search for a location (Finding and saving locations, page 2).
3. Select a location.
4. Select Go!.
5. Select an option:
 - To add the location as the next destination in your route, select Add As Next Stop.
 - To add the location to the end of your route, select Add As Last Stop.
 - To add the location and edit the order of destinations in your route, select Add to Active Route.

The device re-calculates the route to include the added location and guides you to the destinations in order.

Skipping the Next Destination in Your Route

If your active route includes more than one destination, you can skip the next destination and remove it from your route. From the map, select > Edit Route > Skip Next Destination.

The device recalculates the route and starts navigating to the next remaining destination.

Shaping your route

Before you can shape your route, you must start a route (Starting a route, page 6).

You can manually shape your route to change its course. This allows you to direct the route to use a certain road or go through a certain area without adding a destination to the route.

1. Touch anywhere on the map.
2. Select . The device enters route shaping mode.
3. Select a location on the map.

TIP: you can select to zoom in on the map and select a more precise location. The device recalculates the route to travel through the selected location.

4. If necessary, select an option:

To add more shaping points to the route, select additional locations on the map.

To remove a shaping point, select .

5. When you are finished shaping the route, select Go!.

Taking a Detour

You can take a detour for a specified distance along your route or detour around specific roads. This is useful if you encounter construction zones, closed roads or poor road conditions.

1. From the map, select > Edit Route.

TIP: if the Edit Route tool is not in the map tools menu, you can add it.

2. Select an option:

To re-route for a specific distance, select Detour by Distance.

To detour around a specific road on the route, select Detour by Road.

To find a new route, select Detour.

Changing the route calculation mode

1. Select Settings > Navigation > Calculation Mode.

2. Select an option:

Select Faster Time to calculate routes that are faster to drive, but can be longer in distance.

Select Off Road to calculate point-to-point routes (without roads).

Select Shorter Distance to calculate routes that are shorter in distance, but can take more time to drive.

Stopping the route

From the map, select > Stop.

Using Suggested Routes

Before you can use this feature, you must save at least one location and enable the travel history feature (Device and privacy settings, page 13). Using the myTrends™ feature, your device predicts your destination based on your travel history, the day of the week and the time of day. After you have driven to a favourite location several times, the location may appear in the navigation bar on the map, along with the estimated time of travel and traffic information. Select the navigation bar to view a suggested route to the location.

Avoiding Delays, Tolls and Areas

Avoiding traffic delays on your route

Before you can avoid traffic delays, you must be receiving traffic information (Traffic, page 10). By default, the device optimises your route to avoid traffic delays automatically. If you have disabled this option in the traffic settings (Traffic Settings, page 13), you can view and avoid traffic delays manually.

1. While navigating a route, select > Traffic.

2. Select Alternative Route, if available.

3. Select Go!.

Avoiding toll roads

Your device can avoid routing you through areas that require tolls, such as toll roads, toll bridges, or congestion areas. The device may still include a toll area in your route if no other reasonable routes are available.

1. Select Settings > Navigation.

2. Select an option:

NOTE: the menu changes based on your area and the map data on your device.

Select Toll Roads.

Select Tolls and Fees > Toll Roads.

3. Select an option:

To be asked each time before routing through a toll area, select Always Ask.

To always avoid tolls, select Avoid.

To always allow tolls, select Allow

4. Select Save.

Avoiding toll stickers

If the map data on your device contains detailed toll sticker information, you can avoid or allow roads that require toll stickers for each country.

NOTE: this feature is not available in all areas.

1. Select Settings > Navigation > Tolls and Fees > Toll Stickers.
2. Select a country.
3. Select an option:

To be asked each time before routing through an area that requires toll stickers, select Always Ask.

To always avoid roads that require toll stickers, select Avoid.

To always allow roads that require toll stickers, select Allow.

4. Select Save.

Avoiding road features

1. Select Settings > Navigation > Avoidances.
2. Select the road features to avoid on your routes, and select OK.

Avoiding environmental zones

Your device can avoid areas with environmental or emissions restrictions that may apply to your vehicle.

1. Select Settings > Navigation > Environmental Zones.
2. Select an option:
 1. To be asked each time before routing through an environmental zone, select Always Ask.
 2. To always avoid environmental zones, select Avoid.
 3. To always allow environmental zones, select Allow.
3. Select Save.

Custom avoidances

Custom avoidances allow you select specific areas or sections of road to avoid. When the device calculates a route, it avoids these areas and roads unless no other reasonable route is available.

Avoiding a road

1. Select Settings > Navigation > Custom Avoidances.
2. If necessary, select Add Avoidance.
3. Select Add Avoid Road.
4. Select the starting point of the section of road to avoid and select Next.
5. Select the ending point of the road section and select Next.
6. Select Done.

Avoiding an area

1. Select Settings > Navigation > Custom Avoidances.
2. If necessary, select Add Avoidance.
3. Select Add Avoid Area.
4. Select the upper left corner of the area to avoid and select Next
5. Select the lower right corner of the area to avoid and select Next
6. The selected area is shaded on the map.
7. Select Done.

Disabling a custom avoidance

You can disable a custom avoidance without deleting it.

1. Select Settings > Navigation > Custom Avoidances.
2. Select a created avoidance.
3. Select > Disable.

Deleting custom avoidances

1. Select Settings > Navigation > Custom Avoidances >
2. Select an option
 1. To delete all custom avoidances, select Select All > Delete.
 2. To delete one custom avoidance, select the avoidance and select Delete.

Navigating off road

If you are not following roadways as you navigate, you can use Off Road mode.

1. Select Settings > Navigation.
2. Select Calculation Mode > Off Road > Save. The next route will be calculated as a straight line to the location.

Using the Map

You can use the map to navigate a route (Your route on the map, page 6) or to view a map of your surroundings when no route is active.

1. Select View Map.
2. Touch anywhere on the map.
3. Select an option:
 1. Drag the map to pan left, right, up, or down.
 2. To zoom in or out, select or .
 3. To switch between North Up and 3-D views, select.
 4. To filter the displayed points of interest by category, select .
 5. To start a route, select a location on the map, and select Go! (Starting a route by using the map, page 6).

Map Tools

Map tools provide quick access to information and device functions while you view the map. When you activate a map tool, it appears in a panel at the edge of the map.

Stop: stops navigation of the active route. **Edit Route:** allows you to re-route or skip locations in your route (Changing Your Active Route, page 7).

Mute: mutes the master volume.

Towns Ahead: shows upcoming towns and services along your active route or along a highway (Towns Ahead, page 9).

Up Ahead: shows upcoming locations along the route or the road on which you are travelling (Up ahead, page 9).

Traffic: displays traffic conditions along your route or in your area (Viewing upcoming traffic, page 10). This feature is not available in all areas or for all device models.

Trip Data: displays customisable trip data, such as speed or mileage (Viewing trip data from the map, page 9).

Turns: displays a list of upcoming turns in your route (Viewing turns and directions, page 7).

Break Planner: displays break reminders and suggested stops.

Viewing a map tool

1. From the map, select .
2. Select a map tool. The map tool appears in a panel at the edge of the map.
3. When you have finished using the map tool, select .

Up ahead

The Up Ahead tool provides information about upcoming locations along your route or the road on which you are travelling. You can view upcoming points of interest by category, such as restaurants, fuel stations or roadside services.

You can customise three categories to show in the Up Ahead tool.

Viewing upcoming locations

1. From the map, select > Up Ahead. While you are travelling, the map tool shows the next location along your road or route in each of the three categories. While you are not travelling, the map tool shows the three category names.
2. Select an option:
If the map tool shows categories, select a category to view a list of nearby locations in that category.
If the map tool shows upcoming locations, select a location to view location details or start a route to the location.

Customising the up ahead categories

You can change the location categories that appear in the Up Ahead tool.

1. From the map, select > Up Ahead.
2. Select a category.
3. Select .
4. Select an option:
 1. To move a category up or down in the list, select and drag the arrow next to the category name.
 2. To change a category, select the category.
 3. To create a custom category, select a category, select Custom Search, and enter the name of a business or category.

5. Select Save.

Towns Ahead

While you are travelling on a highway or navigating a route that includes a highway, the Towns Ahead tool provides information about upcoming towns along the highway. For each town, the map tool shows the distance to the highway exit and the services available, similar to the information on highway road signs.

Viewing Upcoming Towns and Exit Services

1. From the map, select .

While you are travelling along a highway or an active route, the map tool shows information about upcoming towns and exits.

2. Select a town.

The device shows a list of points of interest located at the selected town exit, such as fuel stations, lodging or restaurants.

3. Select a location, and select Go! to start navigating.

Trip information

Viewing trip data from the map

Before you can view trip data on the map, you must add the tool to the map tools menu. From the map, select > Trip Data.

Viewing Customised Trip Information on the Map

You can use the trip data map tool to show customised trip information on the map.

1. From the map, select > Trip Data.
2. Select an option:



- Select a data field in the trip data tool and select the information to show in the field.
- Select the customisable map data field , and select the information to show in the field.

Viewing the trip information page

The trip information page displays your speed and provides statistics about your trip.

NOTE: if you make frequent stops, leave the device turned on, so it can accurately measure elapsed time during the trip. From the map, select Speed.

Viewing the trip log

Your device keeps a trip log, which is a record of the path you have travelled.

1. Select Settings > Map & Vehicle > Map Layers.
2. Select the Trip Log tick box.

Resetting trip information

1. From the map, select Speed.
2. Select > Reset Field(s).
3. Select an option:
 - When not navigating a route, select Select All to reset every data field on the first page except the speedometer.
 - Select Reset Trip Data to reset the information on the trip computer.
 - Select Reset Max. Speed to reset the maximum speed.
 - Select Reset Trip B to reset the odometer.

Viewing upcoming traffic

Before you can use this feature, your device must be receiving traffic data (Traffic, page 10). You can view traffic incidents coming up along your route or along the road on which you are travelling.

1. While navigating a route, select > Traffic. The nearest upcoming traffic incident appears in a panel on the right side of the map.
2. Select the traffic incident to view additional details.

Viewing traffic on the map

The traffic map shows colour-coded traffic flow and delays on nearby roads.

1. From the main menu, select Apps > Traffic.
2. If necessary, select > Legend to view the legend for the traffic map.

Searching for traffic incidents

1. From the main menu, select Apps > Traffic.
2. Select > Incidents.
3. Select an item in the list.
4. If there is more than one incident, use the arrows to view additional incidents.

Customising the map

Customising the map layers

You can customise which data appears on the map, such as icons for points of interest and road conditions.

1. Select Settings > Map & Vehicle > Map Layers.²
2. Select the tick box next to each layer you want to show on the map.

Changing the map data field

1. From the map, select a data field.
NOTE: you cannot customise Speed.
2. Select a type of data to display.

Changing the map perspective

1. Select Settings > Map & Vehicle > Driving Map View.
2. Select an option:
Select Track Up to display the map in two dimensions (2-D), with your direction of travel at the top.
Select North Up to display the map in 2-D with North at the top.
Select 3-D to display the map in three dimensions.

Traffic

NOTICE

Garmin is not responsible for the accuracy or timeliness of the traffic information.

Your device can provide information about traffic on the road ahead or on your route. You can set your device to avoid traffic when calculating routes, and to find a new route to your destination if a large traffic delay occurs on your active route (Traffic Settings, page 13). The traffic map allows you to browse the map for traffic delays in your area.

To provide traffic information, your device must be receiving traffic data.

- Product models ending with MT can receive traffic data from an over-the-air broadcast signal using the built-in traffic receiver and the included vehicle power cable (Receiving traffic data using a traffic receiver, page 10).
- Product models ending with MT-S can receive subscription-free traffic data using the Smartphone Link app (Receiving Traffic Data Using Smartphone Link, page 11). These models cannot receive an over-the-air traffic signal.

Traffic data is not available in all areas. For information about traffic coverage areas, go to garmin.com/traffic

Receiving traffic data using a traffic receiver

NOTICE

Heated (metallised) windscreens could degrade the performance of the traffic receiver.

A traffic receiver receives traffic data from an over-the-air broadcast signal, where available. To receive over-the-air traffic data, the device must be connected to vehicle power using a traffic-compatible power cable. A traffic receiver is included with some product models (Traffic, page 10). Traffic data is not available in all areas. For information about traffic coverage areas, go to garmin.com/traffic

Connect the device to vehicle power using the traffic-compatible power cable (Mounting and powering the Garmin Drive device in your vehicle, page 1). If your product model includes traffic data, the vehicle power cable included

with your device is traffic-compatible.

When you are within a traffic coverage area, your device can display traffic information and help you avoid traffic delays.

Traffic Receiver Subscriptions

A regional traffic data subscription is included with most traffic receivers. You can add subscriptions for additional regions to your traffic receiver. For more information, go to garmin.com/traffic.

Viewing traffic subscriptions

Select Settings > Traffic > Subscriptions.

Adding a subscription

You can purchase traffic subscriptions for other regions or countries.

1. Select Settings > Traffic.
2. Select Subscriptions > .
3. Write down the FM traffic receiver unit ID.
4. Go to www.garmin.com/fmtraffic to purchase a subscription and get a 25-character code. The traffic subscription code cannot be reused. You must obtain a new code each time you renew your service. If you own multiple FM traffic receivers, you must obtain a new code for each receiver.
5. Select Next on the device.
6. Enter the code.
7. Select Done.

Receiving Traffic Data Using Smartphone Link

NOTE: smartphone Link traffic data is available only for product models ending in MT-S. Your device can receive subscription-free traffic data through the Smartphone Link app.

1. Connect your device to Smartphone Link (Connecting to Smartphone Link, page 11).
2. On your Garmin Drive device, select Settings > Traffic and verify the Traffic tick box is selected.

Connecting to Smartphone Link

You must pair your Garmin Drive device with your phone and connect to Smartphone Link to use some features, such as live traffic and parking information. After the devices are paired, they connect automatically when they are turned on and within range.

1. On your smartphone, install the Garmin Smartphone Link app.
2. To find the Smartphone Link app, you can search in the app store on your smartphone, or go to garmin.com/smartphonelink
3. On your Garmin Drive device, select Apps > Smartphone Link > Connect.
4. On your smartphone, open the Garmin Smartphone Link app, and accept the licence agreement.
5. Select an option:
 1. If you are pairing with an Apple® smartphone, respond to the on-screen prompts to complete the pairing process.
 2. If you are pairing with a smartphone with Android™, complete steps 5-8.

6. On your smartphone with Android, select Bluetooth The Bluetooth® settings for your smartphone appear.
7. If necessary, select the option to search or scan for nearby devices.
8. From the list of Bluetooth devices, select your Garmin Drive device name.
TIP: the Bluetooth name for your Garmin Drive device appears on the Garmin Drive screen. You must select the device name indicated for your smartphone operating system.
9. Respond to the on-screen prompts to complete the pairing process.

Disconnecting from Smartphone Link

You can temporarily disconnect or permanently unpair your phone. Your device does not receive data from the Smartphone Link app while your phone is disconnected.

1. Select Apps > Smartphone Link > .
2. Select your phone name.
3. Select an option:
 - To temporarily disconnect your phone from your device, clear the Smartphone Link tick box. When you want to receive Smartphone Link data again, you must select the tick box to enable your device to connect to Smartphone Link.
 - To permanently unpair your phone from your device, select Unpair device. Your phone is no longer authorised to connect to your device. If you want to connect to your phone in the future, you must pair your phone and device again.

If you unpaired your phone, you should open your smartphone Bluetooth settings and remove your Garmin Drive device from the list of paired devices. This can help to prevent problems if you want to pair the devices again in the future. See your smartphone owner's manual for more information about removing paired devices.

Enabling traffic

You can enable or disable traffic data.

1. Select Settings > Traffic.
2. Select the Traffic tick box.

Viewing traffic on the map

The traffic map shows colour-coded traffic flow and delays on nearby roads.

1. From the main menu, select Apps > Traffic.
2. If necessary, select > Legend to view the legend for the traffic map.

Searching for traffic incidents

1. From the main menu, select Apps > Traffic.
2. Select > Incidents.
3. Select an item in the list.
4. If there is more than one incident, use the arrows to view additional incidents.

Using the apps

Viewing the Owner's Manual on Your Device

You can view the complete owner's manual on the device screen in many languages.

1. Select Apps > Owner's Manual. The owner's manual appears in the same language as the software text (Language and Keyboard Settings, page 13).
2. Select to search the owner's manual (optional).

Trip planner

You can use the trip planner to create and save a trip, which you can navigate later. This can be useful for planning a delivery route, a vacation, or a road trip. You can edit a saved trip to further customise it, including reordering locations, optimising the order of stops, adding suggested attractions and adding shaping points. You can also use the trip planner to edit and save your active route.

Planning a trip

A trip can include many locations, and it must include at least a starting point and a destination. The starting point is the location from which you plan to start your trip. If you start navigating the trip from a different location, the device gives you the option to route to your starting point first. For a round trip, the starting location and final destination can be the same.

1. Select Apps > Trip Planner > New Trip.
2. Select Select Start Location.
3. Choose a location for your starting point, and select Select.
4. Select Select Destination.
5. Choose a location for a destination, and select Select.
6. Select Add Location to add more locations (optional).
7. After you have added all the necessary locations, select Next Save.
8. Enter a name and select Done.

Editing and reordering locations in a trip

1. Select Apps > Trip Planner > Saved Trips.
2. Select a saved trip.
3. Select a location.
4. Select an option:
 - To move the location up or down, select , and drag the location to a new position in the trip.
 - To add a new location after the selected location, select .
 - To remove the location, select

Optimising the order of stops in a trip

The device can automatically optimise the order of stops in your trip to create a shorter, more efficient route. The starting location and final destination are not changed when you optimise the order.

While editing a trip, select > Optimise Order.

Discovering Attractions Along Your Trip

The device can suggest interesting or popular attractions to add to your trip.

1. While editing a trip, select > Trip Settings > Suggest Attractions.

2. Select an attraction to view more information.
3. Select Select to add the attraction to your trip.

Changing routing options for a trip

You can customise how the device calculates the route when you start your trip.

1. Select Apps > Trip Planner > Saved Trips.
2. Select a saved trip.
3. Select > Trip Settings.⁴
4. Select an option:
 1. To add shaping points to your trip, select Shape Route, and follow the on-screen instructions (Shaping your route, page 7).
 2. To change the calculation mode for the trip, select Route Preference (Changing the route calculation mode, page 8).

Navigating to a favourite trip

1. Select Apps > Trip Planner > Saved Trips.
2. Select a saved trip.
3. Select Go!.
4. Select the first location to navigate to, and select Start. The device calculates a route from your current location to the selected location, and then it guides you to the remaining trip destinations in order.

Editing and saving your active route

If a route is active, you can use the trip planner to edit and save your route as a trip.

1. Select Apps > Trip Planner > My Active Route.
2. Edit your route using any of the trip planner features. The route recalculates each time you make a change.
3. Select Save to save your route as a trip, which you can navigate again later (optional).

Viewing Previous Routes and Destinations

Before you can use this feature, you must enable the travel history feature (Device and privacy settings, page 13). You can view your previous routes and places where you have stopped on the map. Select Apps > Where I've Been.

Garmin Drive settings

Map and vehicle settings **Select Settings > Map & Vehicle.**

- **Vehicle:** sets the vehicle icon that represents your position on the map.
- **Driving Map View:** sets the perspective on the map.
- **Map Detail:** sets the level of detail on the map. More detail may cause the map to be drawn more slowly.
- **Map Theme:** changes the colour of the map data.
- **Map Layers:** sets the data that appears on the map page (Customising the map layers, page 10).
- **Auto Zoom:** automatically selects the zoom level for optimal use of your map. When disabled, you must zoom

in or out manually.

- **Maps:** sets which installed maps the device uses.

Enabling maps

You can enable map products installed on your device.

TIP: to purchase additional map products, go to <http://buy.garmin.com>

1. Select Settings > Map & Vehicle > myMaps.
2. Select a map.

Navigation settings

Select Settings > Navigation.

- **Route Preview:** shows a preview of the major roads in your route when you start navigation.
- **Calculation Mode:** sets the route calculation method. Avoidances: sets road features to avoid on a route.
Custom Avoidances: allows you to avoid specific roads or areas.
- **Toll Roads:** sets preferences for avoiding toll roads.
- **Tolls and Fees:** sets preferences for avoiding toll roads and toll stickers.
NOTE: this feature is not available in all areas.
- **Restricted Mode:** disables all functions that require significant operator attention.
- **GPS Simulator:** stops the device from receiving a GPS signal and saves battery power.

Calculation Mode Settings

Select Settings > Navigation > Calculation Mode.

The route calculation is based on road speeds and vehicle acceleration data for a given route.

- **Faster Time:** calculates routes that are faster to drive but can be longer in distance.
- **Shorter Distance:** calculates routes that are shorter in distance but can take more time to drive.
- **Off Road:** calculates a direct line from your location to your destination.

Setting a simulated location

If you are indoors or not receiving satellite signals, you can use the GPS simulator to plan routes from a simulated location.

1. Select Settings > Navigation > GPS Simulator.
2. From the main menu, select View Map.
3. Tap the map twice to select an area. The address of the location appears at the bottom of the screen.
4. Select the location description.
5. Select Set Location.

Driver Assistance Settings

Select Settings > Driver Assistance.

- **Driver Alerts:** allows you to enable or disable alerts for upcoming zones or road conditions (Driver awareness features and alerts, page 2).

- **Speeding Alert:** alerts you when you are exceeding the speed limit.
- **Break Planning:** reminds you to take a break and shows upcoming services after you drive for an extended time. You can enable or disable break reminders and upcoming service suggestions.
- **Proximity Alerts:** alerts you when you approach speed cameras or red light cameras.

Proximity alerts settings

NOTE: you must have custom points of interest (POIs) loaded for proximity points alerts to display.

NOTE: this feature is not available in all areas.

Select Settings > Driver Assistance > Proximity Alerts.

- **Audio:** sets the style of alert that plays when you approach proximity points.
- **Alerts:** sets the type of proximity points for which alerts are

Backup camera settings

The backup camera settings allow you to manage paired Garmin backup cameras and camera settings. This menu appears on your navigation device only when the device is connected to a wireless camera receiver cable. See the owner's manual for your backup camera for detailed information about pairing cameras and camera settings. Go to garmin.com/backupcamera to purchase a Garmin backup camera.

Select Settings > Backup Camera, and select a paired camera.

Unpair: removes the paired camera. You must pair the camera again before you can view it using this device and cable.

Rename: allows you to rename the paired camera.

Guidance Lines: shows or hides guidance lines and allows you to adjust the position of the guidance lines.

Display settings

Select Settings > Display.

Colour Mode: allows you to select day or night colour mode. If you select the Auto option, the device automatically switches to day or night colours based on the time of day.

Brightness: allows you to adjust the display brightness.

Display Timeout: allows you to set the amount of idle time before your device enters sleep mode while using battery power.

Screenshot: allows you to take a picture of the device screen. Screenshots are saved in the Screenshot folder of the device storage.

Traffic Settings

From the main menu, select Settings > Traffic.

Traffic: enables traffic.

Current Provider: sets the traffic provider to use for traffic data. The Auto option selects the best available traffic data automatically.

Subscriptions: lists the current traffic subscriptions.

Optimise Route: enables the device to use optimised alternative routes automatically or upon request (Avoiding traffic delays on your route, page 8).

Traffic Alerts: sets the traffic delay severity for which the device displays a traffic alert.

Traffic Voice Prompts: enables voice prompts for traffic events.

Units and time settings

To open the Units and Time settings page, from the main menu, select Settings > Units & Time.

Current Time: sets the device time.

Time Format: allows you to select a 12-hour, 24-hour or UTC display time

Time Format: allows you to select a 12-hour, 24-hour or UTC display time

Units: sets the unit of measure used for distances.

Position Format: sets the co-ordinate format and datum used for geographical co-ordinates.

Setting the Time

1. From the main menu, select the time.
2. Select an option:
 1. To set the time automatically using GPS information, select Automatic.
 2. To set the time manually, drag the numbers up or down.

Language and Keyboard Settings

To open the Language and Keyboard settings, from the main menu, select Settings > Language & Keyboard.

Voice Language: sets the language for voice prompts.

Text Language: sets all on-screen text to the selected language.

NOTE: changing the text language does not change the language of user-entered data or map data, such as street names.

Keyboard Language: enables keyboard languages.

Device and privacy settings

Select Settings > Device.

About: displays the software version number, the unit ID number and information on several other software features.

Regulatory: displays regulatory markings and information. EULAs: displays the end-user licence agreements.

NOTE: you need this information when you update the system software or purchase additional map data.

Travel History: allows the device to store a record of the places you go. This allows you to view the trip log, use the Where I've been feature and use myTrends suggested routes.

Reset: allows you to clear your travel history, reset settings or delete all user data.

Resetting Data and Settings

The device offers several options for deleting your user data and resetting all settings to the factory default values.

1. Select Settings > Device > Reset.
2. Select an option:
 1. To clear your travel history, select Clear Travel History. This option deletes all records of the places you have travelled. It does not delete saved locations or installed maps.
 2. To reset all settings to the factory default values, select Reset Default Settings. This option does not delete any user data.
 3. To delete all user data and reset all settings to the factory default values, select Delete Data and Reset Settings. This option deletes all user data, including your saved locations, recently found locations and travel history. Installed maps are not deleted.

Device information

Viewing Regulatory and Compliance Information

1. From the settings menu, swipe to the bottom of the menu.
2. Select Device > Regulatory.

Charging the Device

NOTE: this Class III product shall be powered by an LPS power supply.
You can charge the battery in the device using any of these methods.

- Connect the device to vehicle power.
- Connect the device to an optional power adapter accessory, such as a wall power adapter.
- You can purchase an approved Garmin AC-DC adapter suitable for home or office use from a Garmin dealer or www.garmin.com. The device may charge slowly when connected to a third-party adapter.

Device maintenance

Garmin Support Centre

Go to support.garmin.com for help and information, such as product manuals, frequently asked questions, videos and customer support.

Map and Software Updates

1. For the best navigation experience, you should keep the maps and software on your device up to date.
2. Map updates provide the newest available changes to roads and locations in the maps used by your device.
Keeping maps up to date helps your device find recently added locations and calculate more accurate routes.
Map updates are large and may take several hours to complete.
3. Software updates provide changes and improvements to the device features and operation. Software updates

are small and take a few minutes to complete.

4. You can connect the device to a computer and update it using the Garmin Express application (garmin.com/express).

Updating Maps and Software with Garmin Express

You can use the Garmin Express application to download and install the latest map and software updates for your device.

1. If you do not have the Garmin Express application installed on your computer, go to garmin.com/express and follow the on-screen instructions to install it.
2. Open the Garmin Express application.
3. Connect your device to your computer using a mini- USB cable.

The small end of the cable connects to the mini-USB port on your Garmin Drive device and the large end connects to an available USB port on your computer.



1. When your Garmin Drive device prompts you to enter file transfer mode, select Continue.
2. In the Garmin Express application, click Add a Device. The Garmin Express application searches for your device and displays the device name and serial number.
3. Click Add Device and follow the on-screen instructions to add your device to the Garmin Express application. When setup is complete, the Garmin Express application displays the updates available for your device.



4. Select an option:

To install all available updates, click Install All.

To install a specific update, click View Details and click Install next to the update you want. The Garmin Express application downloads and installs the updates onto your device. Map updates are very large and this process may take a long time on slower internet connections.

NOTE: if a map update is too large for the internal storage of the device, the software may prompt you to install a microSD® card in your device to add storage space (Installing a memory card for maps and data, page 16).

5. Follow the on-screen instructions during the update process to finish installing updates. For example, during the update process, the Garmin Express application may instruct you to disconnect and reconnect your device.

Installing Garmin Express

The Garmin Express application is available for Windows® and Mac® computers.

1. On your computer, go to garmin.com/express
2. Select an option:
To view the system requirements and verify the Garmin Express application is compatible with your computer, select System Requirements.
To install on a Windows computer, select Download for Windows.
To install on a Mac computer, select Download for Mac.
3. Open the downloaded file, and follow the on-screen instructions to complete the installation.

Device Care

- Avoid dropping your device.
- Do not store the device where prolonged exposure to extreme temperatures can occur, as it can cause permanent damage.
- Never use a hard or sharp object to operate the touchscreen as this may result in damage.
- Do not expose the device to water.

Cleaning the outer casing

NOTICE

Avoid chemical cleaners and solvents that can damage plastic components.

1. Clean the outer casing of the device (not the touchscreen) using a cloth dampened with a mild detergent solution.
2. Wipe the device dry.

Cleaning the Touchscreen

1. Use a soft, clean, lint-free cloth.
2. If necessary, lightly dampen the cloth with water.
3. If using a dampened cloth, turn off the device and disconnect the device from the power.
4. Gently wipe the screen with the cloth.

Avoiding theft

- Remove the device and mount from sight when not in use.
- Remove the residue left on the windscreen by the suction cup.
- Do not keep your unit in the glove compartment.
- Register your device using the Garmin Express software (garmin.com/express)

Restarting the Device

You can restart your device if it stops functioning. Hold the power key for 12 seconds.

Removing the Device, Mount and Suction Cup

Removing the Device from the Mount

1. Press the release tab or button on the mount.
2. Tilt the bottom of the device upward, and lift the device from the mount.

Removing the Mount from the Suction Cup

1. Turn the device mount to the right or left.
2. Apply pressure until the socket on the mount releases the ball on the suction cup.

Removing the Suction Cup from the Windscreen

1. Flip the lever on the suction cup towards you.
2. Pull the tab on the suction cup towards you.

Changing the Fuse in the Vehicle Power Cable

When replacing the fuse, do not lose any of the small pieces and make sure they are put back in the proper position. The vehicle power cable does not work unless it is assembled correctly.

If your device does not charge in your vehicle, you may need to replace the fuse located at the tip of the vehicle adapter.

1. Rotate the end piece anti-clockwise to unlock it.



TIP: you may need to use a coin to remove the end piece.

2. Remove the end piece, the silver tip, and the fuse.
3. Insert a new fast-blow fuse that has the same current, such as 1 A or 2 A.
4. Place the silver tip in the end piece.
5. Push in the end piece and rotate it clockwise to lock it back into the vehicle power cable.

Troubleshooting

The suction cup will not stay on my windscreen

1. Clean the suction cup and windscreen with surgical spirit.
2. Dry with a clean, dry cloth.
3. Mount the suction cup (Mounting and powering the Garmin Drive device in your vehicle, page 1).

My device is not acquiring satellite signals

- Verify the GPS simulator is turned off (Navigation settings, page 12).
- Take your device out of car parks and away from tall buildings and trees.
- Remain stationary for several minutes.

The device does not charge in my vehicle

- Check the fuse in the vehicle power cable (Changing the Fuse in the Vehicle Power Cable, page 15).
- Verify that the vehicle is turned on and is supplying power to the power outlet.
- Verify that the interior temperature of the vehicle is within the charging temperature range indicated in the specifications.
- Verify that the fuse is not broken in the vehicle power socket

My battery does not stay charged for very long

- Decrease the screen brightness (Display settings, page 13).
- Shorten the display timeout (Display settings, page 13).
- Decrease the volume (Adjusting the volume, page 2).
- Put the device in power saving mode when not in use (Turning the device on or off, page 1).
- Keep your device away from extreme temperatures.
- Do not leave your device in direct sunlight.

Appendix

Installing a memory card for maps and data You can install a memory card to increase the storage space for maps and other data on your device. You can purchase memory cards from an electronics supplier, or go to www.garmin.com/maps to purchase a memory card with pre-loaded Garmin mapping software. The device supports microSD memory cards from 4 to 32 GB.

1. Locate the map and data memory card slot on your device (Garmin Drive 52 / Garmin Drive 5 Pro device overview, page 1).
2. Insert a memory card into the slot.
3. Press it in until it clicks

Data management

You can store files on your device. The device has a memory card slot for additional data storage.

NOTE: the device is not compatible with Windows 95, 98, Me, Windows NT® and Mac OS 10.3 or earlier.

About Memory Cards

You can purchase memory cards from an electronics supplier, or purchase pre-loaded Garmin mapping software (www.garmin.com). In addition to map and data storage, the memory card can be used to store files such as maps, images, geocaches, routes, waypoints, and custom POIs.

Connecting the Device to Your Computer

You can connect the device to your computer using a USB cable.

1. Plug the small end of the USB cable into the port on the device.
2. Plug the larger end of the USB cable into a port on your computer.
3. When your Garmin Drive device prompts you to enter file transfer mode, select Continue.

A picture of your device connected to a computer appears on the device screen. Depending on your computer operating system, the device appears as either a portable device, a removable drive, or a removable volume.

Transferring data from your computer

1. Connect the device to your computer (Connecting the Device to Your Computer, page 16). Depending on your computer operating system, the device appears as either a portable device, a removable drive or a removable volume.
2. On your computer, open the file browser
3. Select a file.
4. Select Edit > Copy.
5. Browse to a folder on the device.
6. Select Edit > Paste.

NOTE: for a removable drive or volume, you should not place files in the Garmin folder.

Disconnecting the USB cable

If your device is connected to your computer as a removable drive or volume, you must safely disconnect your device from your computer to avoid data loss. If your device is connected to your Windows computer as a portable device, it is not necessary to safely disconnect the device.

1. Complete an action
For Windows computers, select the Safely Remove Hardware icon in the system tray and select your device.
For Apple computers, select the device, and select File > Eject.
2. Disconnect the cable from your computer.

Viewing GPS signal status

Hold for three seconds.

Purchasing additional maps

1. Go to your device product page at garmin.com
2. Click the Maps tab.
3. Follow the on-screen instructions.

Purchasing accessories

Go to garmin.com/accessories

Frequently Asked Questions

- **Is there a monthly or yearly pay ? Like subscription , data or anything?**

Garmin appears to have become sneaky on this front. Their own site offers no LMT version for the DriveSmart 55. Neither do they directly mention updates for it. Elsewhere on the site, there is verbiage about PAYING for updates. No dollar amount cited. Only that one must download an app to obtain further info.

- **For the DriveSmart 55 and 65 models, do they come with free Lifetime map updates?**

The DriveSmart 55 & Traffic and the DriveSmart 65 & Traffic devices receive map updates and traffic without being charged.

- **Does this come with the Traffic Cable?**

No, a traffic cable is not included or necessary. This device has a built-in traffic receiver which will function whenever it is connected to the included power cable.

- **what is the model no. traffic receiver/vehicle power cable**

The DriveSmart 55 & Traffic includes a traffic receiver/vehicle power cable, model name TA 20, part number 010-11838-00.

- **Does this work for trucks and trailers which have height clearance needs?**

No, this model does not have the ability to route based off truck restrictions and clearances. We have a specific series of devices, our dezl series, which are designed for trucking use. With our dezl devices you can input information about your vehicle to receive customized truck routing.

https://www8.garmin.com/manuals/webhelp/drive52/EN-GB/Drive_52_OM_EN-GB.pdf