



GAME SIR T3 Controller User Manual

[Home](#) » [GameSir](#) » GAME SIR T3 Controller User Manual

Contents [[hide](#)]

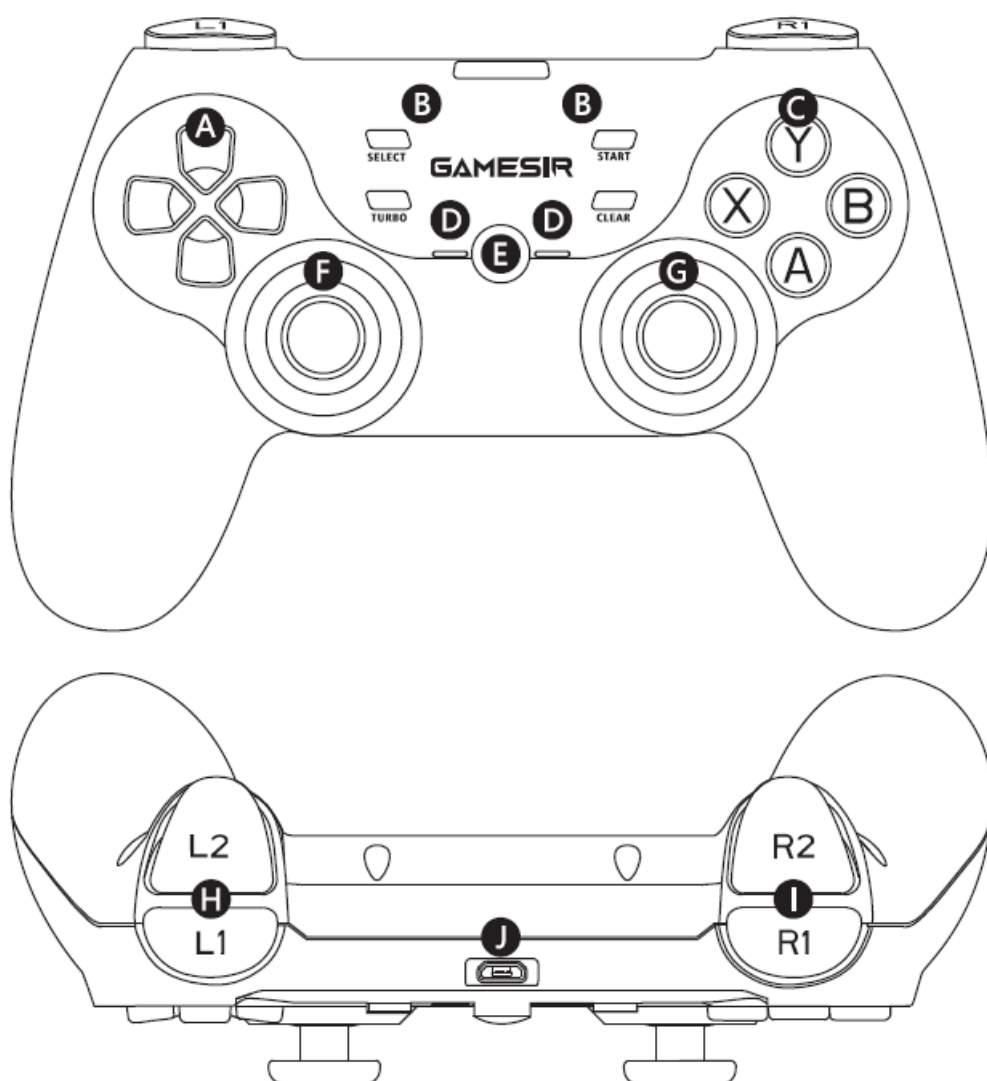
- 1 GAME SIR T3 Controller
- 2 EQUIPMENT LAYOUT
- 3 POWER ON/OFF
- 4 HOW TO CHARGE THE GAMEPAD
 - 4.1 BATTERY STATUS
- 5 HOW TO PAIR WITH USB RECEIVER
 - 5.1 HOW TO CONNECT TO ANDROID TV BOX VIA USB RECEIVER
- 6 MOTOR VIBRATION INTENSITY ADJUSTMENT
- 7 COMBO FUNCTION SETUP OR CANCEL
- 8 FCC STATEMENT NOTICE
- 9 Documents / Resources
- 10 Related Posts

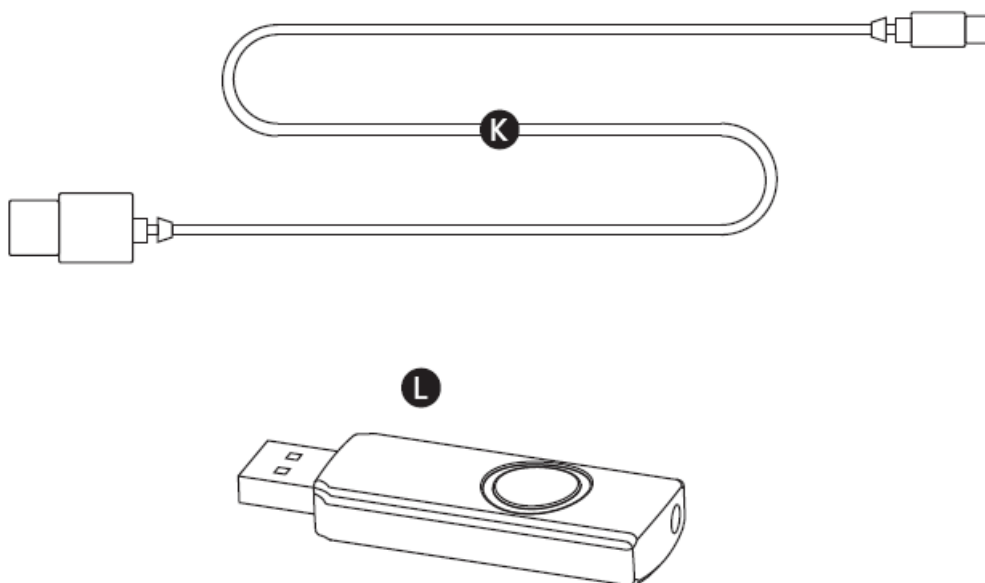


GAME SIR T3 Controller



EQUIPMENT LAYOUT





- **A** D-Pad
- **B** Function Zone
- **C** A/B/X/Y Button
- **D** Indicator Light
- **E** HOME Button
- **F** Left Joystick
- **G** Right Joystick
- **H** L1 / L2 Button
- **I** R1 / R2 Button
- **J** Micro-USB Port
- **K** USB Cable
- **L** USB Wireless Receiver

POWER ON/OFF

- **Power on:** Press and hold the HOME button for 2s to power on;
- **Power off:** Press and hold the HOME button for 5s to power off.

HOW TO CHARGE THE GAMEPAD

Use the attached USB cable to connect the Micro-USB port at the top of the gamepad and a USB power adapter (not included).

BATTERY STATUS

INDICATOR LIGHT	DESCRIPTION
Fast blinking red	Battery level is below 15%
Slow blinking red	Charging
Solid red	Fully charged

Note:

The charging indicator light will cover the mode indicator light when charging.

HOW TO PAIR WITH USB RECEIVER

1. Plug the USB receiver into the USB port of your computer.
2. When the gamepad is powered off, press and hold the R1+X+ HOME button for 2s to start the gamepad;
3. The indicator light of the gamepad fast blinks alternately blue and red to enter the pairing mode;
4. After a successful connection, the default mode is computer connection mode.

HOW TO CONNECT TO YOUR COMPUTER VIA USB RECEIVER

1. Plug the USB receiver into the USB port of your computer;
2. Press and hold the X+HOME button to start the gamepad;
3. When reconnecting to your computer again after the gamepad is powered off, just by pressing and holding the HOME button for 2s to start the gamepad, the gamepad will automatically connect with the USB receiver.

CHARGING INDICATOR LIGHT	DESCRIPTION
Slowly blinking blue	Connecting
Fast blinking blue	Pairing
Solid blue	Connected

HOW TO CONNECT TO ANDROID TV BOX VIA USB RECEIVER

1. Plug the USB receiver into the USB port of your Android TV box;
2. Press and hold the A+HOME button to start the gamepad;
3. When connecting your Android TV box again after the gamepad is powered off, just by pressing and holding the HOME button for 2s to start the gamepad, the gamepad will automatically connect with the USB receiver.

INDICATOR LIGHT	DESCRIPTION
Slowly blinking purple	Connecting
Fast blinking purple	Pairing
Solid purple	Connected

HOW TO CONNECT TO YOUR COMPUTER VIA USB CABLE

1. Press and hold the X+HOME button to start the gamepad;
2. Connect the gamepad to your computer via a USB cable.

INDICATOR LIGHT	DESCRIPTION
Solid red	Connected

HOW TO CONNECT TO YOUR ANDROID TV BOX VIA USB CABLE

1. Press and hold the A+HOME button to start the gamepad;
2. Connect the gamepad to your Android TV box via USB cable.

INDICATOR LIGHT	DESCRIPTION
Solid red	Connected

MOTOR VIBRATION INTENSITY ADJUSTMENT

1. Vibration gear: 4 gears, Off/Low/Middle/Strong;
2. Adjustment of vibration gear: press and hold the TURBO button, then press the D-Pad's down button (downshift) or up (upshift) button to adjust the vibration gear. The vibration response time is 2s when adjusting.

COMBO FUNCTION SETUP OR CANCEL

1. **Combo setup:** press and hold the TURBO button, then quickly press the button that needs a combo setup (programmable buttons: A/B/X/Y/L1/L2/R1/R2);
2. **Combo gear:** 4 gears, Slow 2Hz/Middle 5Hz/Fast 8Hz/Off;
3. Adjustment of combo gear: press and hold the TURBO button, then press the D-Pad's left button (downshift) or right (upshift) button to adjust the combo gear. The indicator light will flicker 1 time when it's at a Slow level, 2 times when at the Middle, and 3 times when at Fast. It can be cyclically adjusted again when it's at Off.
4. **Combo cancel:** Double-click the CLEAR button to cancel all the combo buttons that have been set.

FCC STATEMENT NOTICE

PLEASE READ THESE PRECAUTIONS CAREFULLY

- CONTAINS SMALL PARTS. Keep out of reach of children under the age of 3. Seek immediate medical attention if swallowed or inhaled.
- DO NOT use the product near fire.
- DO NOT expose to direct sunlight or high temperatures.
- DO NOT leave the product in a humid or dusty environment.
- DO NOT impact the product or cause it to fall due to strong impact.
- DO NOT touch USB port directly or it might cause malfunctions.
- DO NOT strongly bend or pull cable parts.
- Use a soft, dry cloth while cleaning.
- DO NOT use chemicals such as gasoline or thinner.
- DO NOT disassemble, repair or modify.
- DO NOT use for purposes other than its original purpose. We are NOT responsible for accidents or damage

when used for non-original purposes.

- DO NOT look directly at the optical light. It might damage your eyes.
- If you have any quality concerns or suggestions, please contact GameSir or your local distributor.

This device complies with part 15 of the FCC Rules. Operation is subject to the following two conditions:

1. This device may not cause harmful interference, and
2. This device must accept any interference received, including interference that may cause undesired operation.


Note:

This equipment has been tested and found to comply with the limits for a Class B digital device, pursuant to part 15 of the FCC Rules. These limits are designed to provide reasonable protection against harmful interference in a residential installation. This equipment generates, uses, and can radiate radio frequency energy and, if not installed and used in accordance with the instructions, may cause harmful interference to radio communications.

However, there is no guarantee that interference will not occur in a particular installation. If this equipment does cause harmful interference to radio or television reception, which can be determined by turning the equipment off and on, the user is encouraged to try to correct the interference by one or more of the following measures:

- Reorient or relocate the receiving antenna.
- Increase the separation between the equipment and the receiver.
- Connect the equipment to an outlet on a circuit different from that to which the receiver is connected.
- Consult the dealer or an experienced radio/TV technician for help.

Documents / Resources

	<p>GAMESIR T3 Controller [pdf] User Manual T3 Controller, T3, Controller</p>
---	--