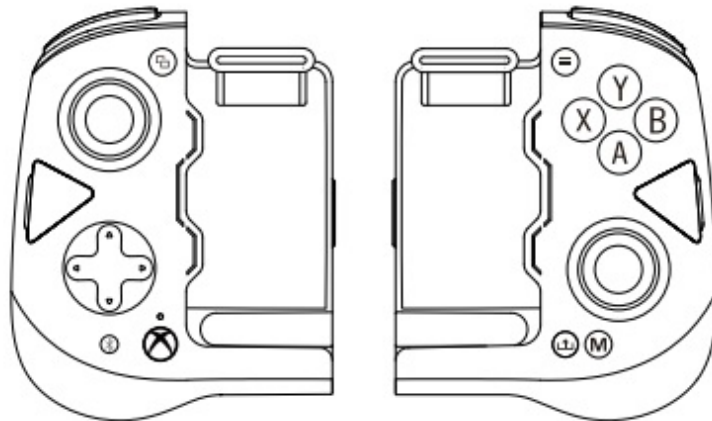


## GAMESIR GX4XAR Xbox Cloud Gaming Controller For Android User Guide

[Home](#) » [GameSir](#) » GAMESIR GX4XAR Xbox Cloud Gaming Controller For Android User Guide 

### GAMESIR GX4XAR Xbox Cloud Gaming Controller For Android



## Contents

- 1 E-MANUAL
- 2 PACKAGE CONTENTS
- 3 REQUIREMENTS
- 4 DEVICE LAYOUT
- 5 POWER ON
- 6 POWER OFF
- 7 STANDBY AND WAKE UP
- 8 CONNECT TO YOUR ANDROID DEVICES VIA BLUETOOTH
- 9 PAIR THE LEFT CONTROLLER AND THE RIGHT CONTROLLER
- 10 BACK BUTTONS SETTINGS
- 11 CAPTURE
- 12 BUTTON COMBINATIONS
- 13 CHARGE AND BATTERY STATUS DISPLAY
- 14 STICKS & TRIGGERS CALIBRATION
- 15 SWAP ABXY BUTTON POSTIONS
- 16 INTERCHANGE PARTS
- 17 CUSTOMIZATION VIA “GAMESIR APP”
- 18 SAFETY
- 19 WASTE ELECTRICAL & ELECTRICAL EQUIPMENT INFORMATION
- 20 DECLARATION OF CONFORMITY
- 21 FCC STATEMENT
- 22 FCC Caution
- 23 CUSTOMER SERVICE
- 24 Documents / Resources
  - 24.1 References
- 25 Related Posts

## E-MANUAL

<https://www.gamesir.hk/pages/manuals-gamesir-x4a-for-xbox>



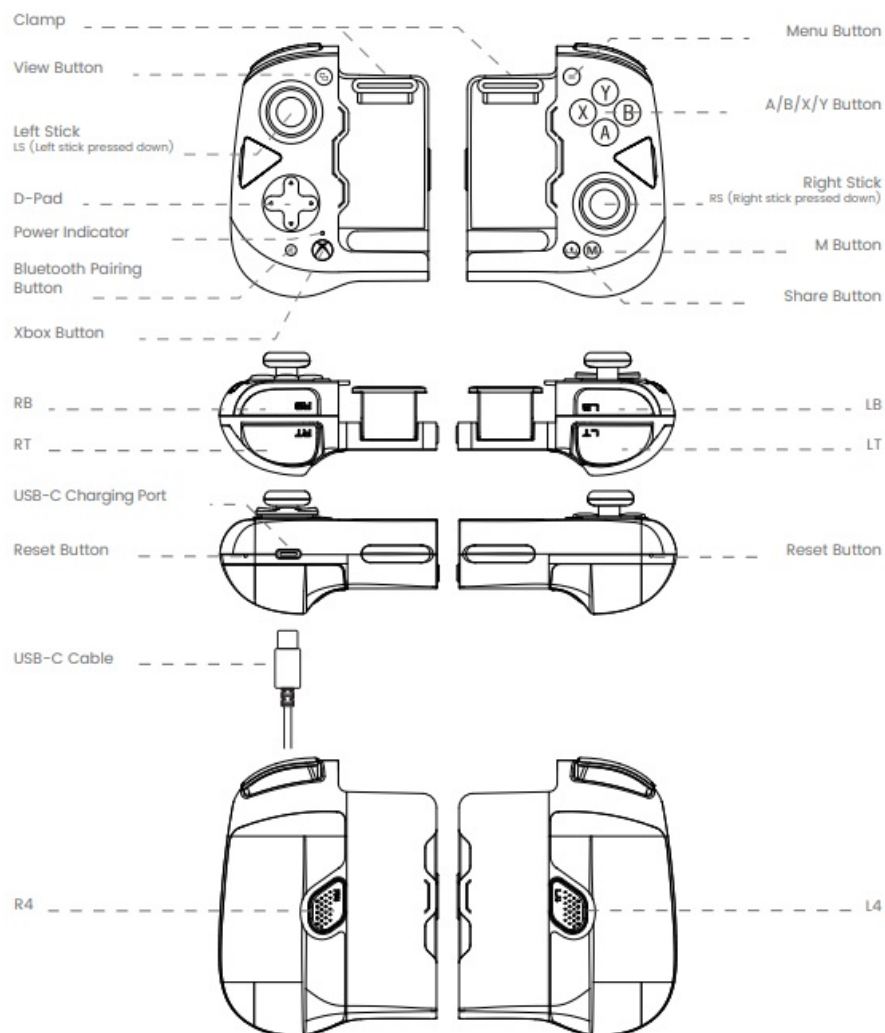
## PACKAGE CONTENTS

GameSir-X4a for Xbox \*1 0.5m USB-C Cable \*1 Small Thumbsticks \*2 Concave Thumbsticks \*2 Faceted D-pad \*1 2mm Thick Rubber Cushions \*2 1mm Thick Rubber Cushions \*2 Carry Case \*1 User Manual \*1 Thank You & After-sale Service Card \*1 GameSir Sticker \*1 Certification \*1

## REQUIREMENTS

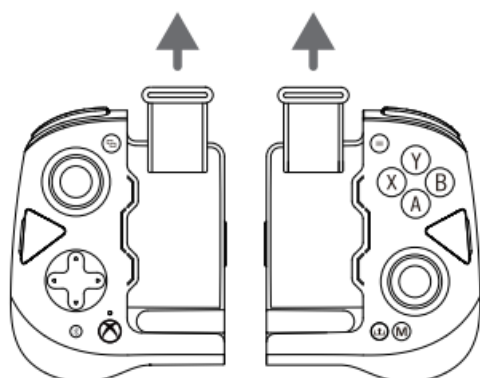
- Android 8.0 or above

## DEVICE LAYOUT

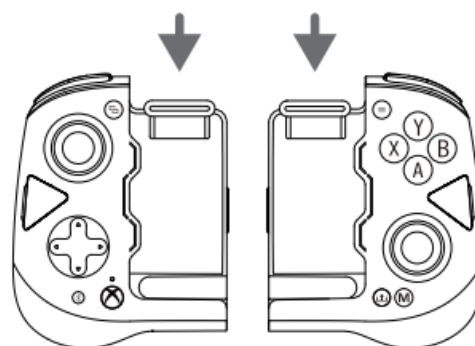


## POWER ON

1. Power on: When the clamp is raised, the controller powers on automatically.
2. Force power on:
  - a) When the left controller's clamp is not raised, hold the Xbox button for 5s to power on.
  - b) When the right controller's clamp is not raised, hold the Share button for 5s to power on.



**Power on**



**Power off**

## POWER OFF

1. When the clamp is closed, the controller will automatically power off. (In the forced power-on mode, the clamp

needs to be raised again and then closed.)

2. In forced power-on mode:
  - a) Hold the Xbox button on the left controller for 5s to power off.
  - b) Hold the Share button on the right controller for 5s to power off.
3. In any power-on mode, interlock the left and right controllers to power off at the same time.

## STANDBY AND WAKE UP

1. When the left and right controllers are turned on with 10 minutes of inactivity, the GameSir-X4a for Xbox will enter standby mode.
2. When the left and right controllers are turned on, hold the Xbox button for 5s and the GameSir-X4a for Xbox will enter standby mode.
3. When the left controller is in standby mode, press Xbox/D-pad's any button to wake up the left controller.
4. When the right controller is in standby mode, press A/B/X/Y/Share button to wake up the right controller.
5. The default automatic standby time is 10 minutes, which can be set in GameSir App.

\*In forced power-on mode, hold the Xbox button for 5s to power off instead of standing by.

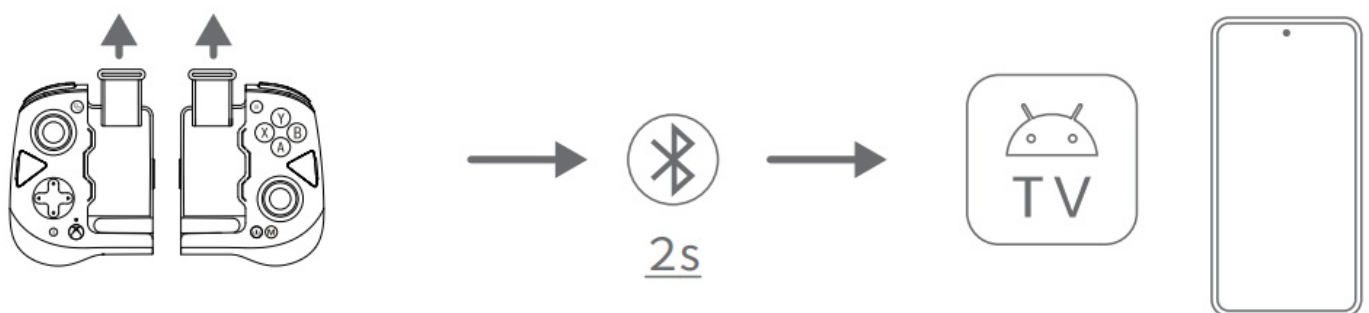
\*Standby is different from power-off. In standby mode, you can wake up the controller with a button.

In power-off mode, you need to raise the clamp or force power on to use the controller.

## CONNECT TO YOUR ANDROID DEVICES VIA BLUETOOTH

1. Raise the clamps and attach your phone to the left and right controllers to power on GameSir-X4a for Xbox or force power on GameSir-X4a for Xbox. Press the Bluetooth pairing button for 2s until the power indicator blinks fast.
2. Turn on the the phone's Bluetooth, click GameSir-X4a for Xbox and pair.
3. The power indicator will become solid white to indicate a successful connection.

\*If GameSir-X4a for Xbox is connected to one phone, it needs to be disconnected from the phone before pressing the Bluetooth pairing button to enter the pairing status.



## PAIR THE LEFT CONTROLLER AND THE RIGHT CONTROLLER

1. Interlock the left and right controllers.
2. Connect the USB-C cable when the left controller is in forced power-on or power-off mode.

\*The controller may need to be re-paired after upgrade or calibration.

## BACK BUTTONS SETTINGS



**Can be mapped to A/B/X/Y/LB/RB/LT/RT/LS/RS/View/Menu/Share/D-pad**

1. Set the L4/R4 button value: Hold the M+L4/R4 buttons simultaneously until the left/right stick RGB circle blinks white slowly. Press the button you want to map to L4/R4 , then press the L4/R4 button.  
When the left/right stick RGB circle returns to the user-set light effect, the L4/R4 button value is set.
  2. Cancel the L4/R4 button value: Hold the M+L4/R4 buttons simultaneously until the left/right stick RGB circle blinks white slowly, then press the L4/R4 button. When the left/right stick RGB circle returns to the user-set light effect, the L4/R4 button value is canceled.
- \*After 10s of inactivity when setting, the controller will automatically exit the setting mode and the button value will remain the same.

## **CAPTURE**

Press the Share button during use to capture.

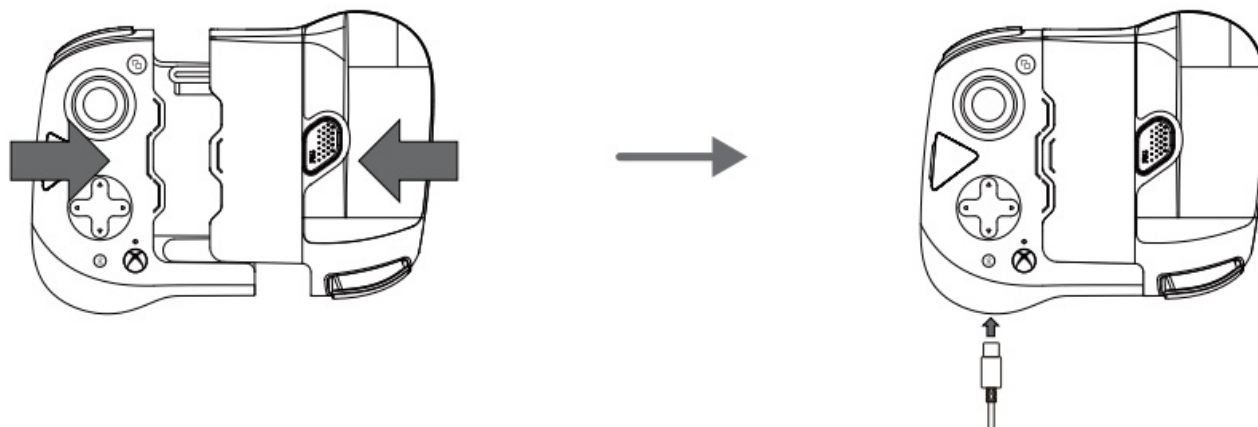
## **BUTTON COMBINATIONS**

Button Combinations	Descriptions
<p>Hold the M + LT/RT buttons for 2s</p>	<p>Enable/Disable hair trigger</p> <p>*After hair trigger mode is on, the left/right stick RGB circle will automatically light up when the LT/RT button is pressed.</p> <p>*The setup will still be saved after restart</p>
<p>M + Left Stick's Up/Down</p>	<p>Increase/Decrease brightness of stick RGB circles</p> <p>*The setup will still be saved after restart</p>
<p>M + Left Stick's Left/Right</p>	<p>Cycle through the 6 lighting effects of stick RGB circles</p> <p>*The setup will still be saved after restart</p>
<p>M + D-pad's Up/Down</p>	<p>Increase/Decrease volume</p>
<p>Hold the M+A buttons for 2s</p>	<p>Interchange A-B, X-Y</p> <p>*The setup will still be saved after restart</p>

## CHARGE AND BATTERY STATUS DISPLAY

### CHARGE

Interlock the left and the right controllers. Use the included USB-C cable to charge.



### BATTERY STATUS DISPLAY

When the controller is turned on, double press the Bluetooth pairing button and see the corresponding stick RGB circle color to know the battery status.

Stick RGB Circle Color	Battery Status
Red	Low battery
White	Remaining battery leve
Orange	Charging

## STICKS & TRIGGERS CALIBRATION

1. When the controllers are turned on, hold the LB+Xbox+RB buttons until the power indicator blinks slowly and the stick RGB circles' colors changes.
2. In calibration mode, the sticks and triggers of the left and right controllers need to be calibrated according to the following steps.
  - a) Rotate the sticks at their maximum angles 3 times and let them return to the initial position naturally.
  - b) Press LT & RT to their maximum travel 3 times and let them return to the initial position naturally.
3. Press the A button to complete and exit the calibration mode.


\*Calibration should be kept at a constant speed and gently operated to avoid errors in the collected data.

\*If the sticks and triggers can be used normally, please do not calibrate.

## SWAP ABXY BUTTON POSTIONS

A/B/X/Y button caps are magnetic so the A/B/X/Y layout can be interchanged according to different playstyles.

1. There is a reserved groove on the left side of the A/B/X/Y button. Align your fingertip with the groove and pull

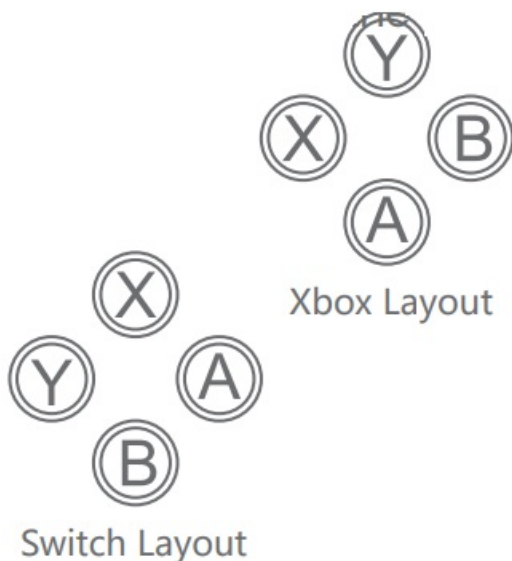
out the button. 

2. Place the buttons according to the layout and the installation is finished.

\*There are 2 A/B/X/Y layouts. Xbox layout: Up Y, Left X, Down A, Right B.

Switch layout: Up X, Left Y, Down B, Right A.

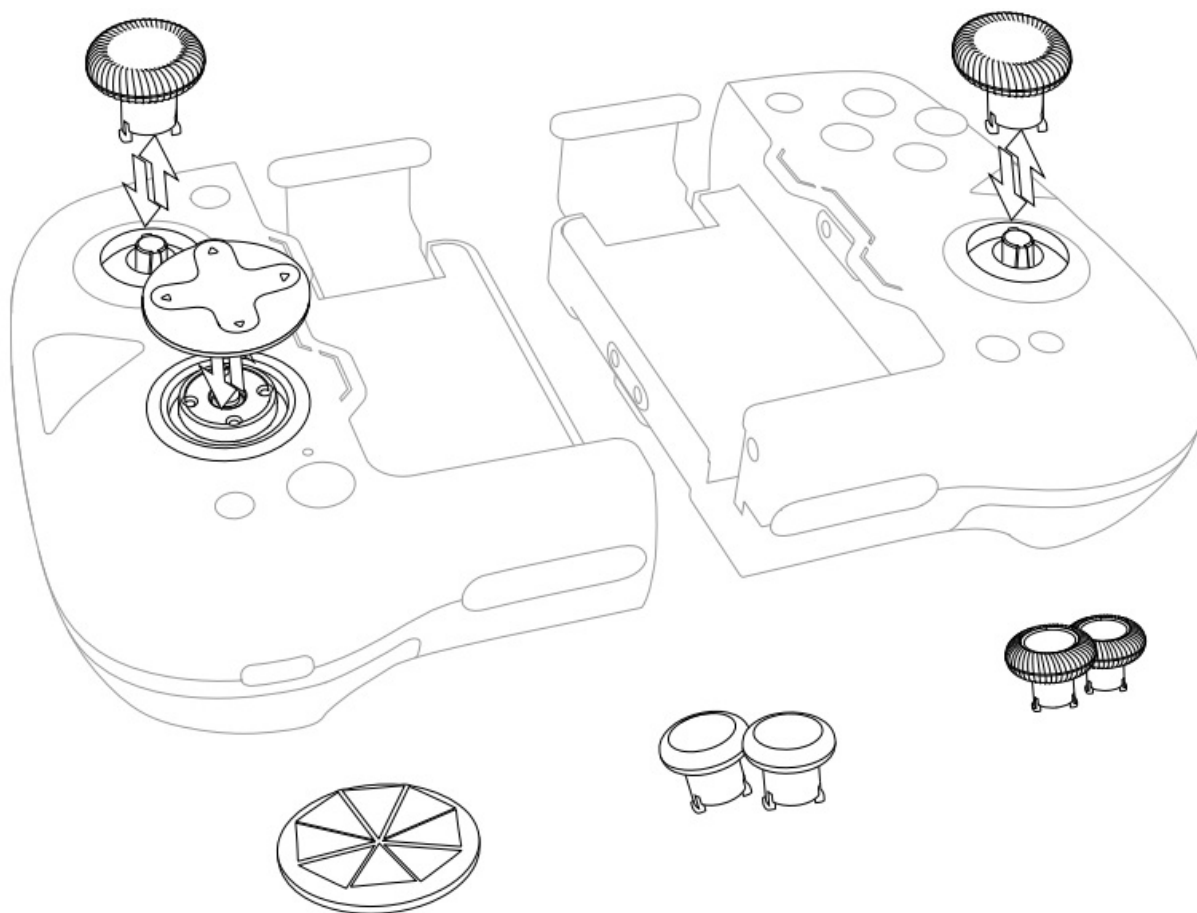
The factory default layout is Xbox layout.



## INTERCHANGE PARTS

GameSir-X4a for Xbox comes with 2 extra sets of thumbsticks and 1 extra D-pad, which can be interchanged according to your preferences.

\*They can be pulled straight out to remove and inserted straight in to install.



## CUSTOMIZATION VIA “GAMESIR APP”

Download GameSir App at [gamesir.hk](http://gamesir.hk) on phone or scan the right QR code. Use GameSir App for firmware upgrade, button testing, sticks & trigger zones adjustment, vibration level control, etc.



## SAFETY



**PLEASE READ THIS PRECAUTIONS CAREFULLY.**

- CONTAINS SMALL PARTS. Keep out of reach of children under the age of 3. Seek immediate medical attention if swallowed or inhaled.
- DO NOT use the product near fire.
- DO NOT expose to direct sunlight or high temperatures.



- DO NOT leave the product in a humid or dusty environment.
- DO NOT impact the product or cause it to fall due to strong impact.
- DO NOT touch USB port directly or it might cause malfunctions.
- DO NOT strongly bend or pull cable parts.
- Use a soft, dry cloth while cleaning.
- DO NOT use chemicals such as gasoline or thinner.
- DO NOT disassemble, repair or modify.
- DO NOT use for purposes other than its original purpose. We are NOT responsible for accidents or damage when used for non-original purposes.
- DO NOT look directly at the optical light. It might damage your eyes.
- If you have any quality concerns or suggestions, please contact GameSir or your local distributor.

## WASTE ELECTRICAL & ELECTRICAL EQUIPMENT INFORMATION



### **■ CORRECT DISPOSAL OF THIS PRODUCT (WASTE ELECTRICAL & ELECTRICAL EQUIPMENT)**

Applicable in the European Union and other European countries with separate collection systems.

This mark on the product or accompanying documents means that it should not be mixed with general household waste. For proper treatment, recovery and recycling, please take this product to designated collection points where it will be accepted free of charge. Alternatively, in some countries you may be able to return your products to your local retailer upon purchase of an equivalent new product.

Disposing of this product correctly will help save valuable resources and prevent any potential negative effects on human health and the environment, which could otherwise arise from inappropriate waste handling. Household users should contact either the retailer where they purchased this product, or their local government office, for details of where and how they can take this item for environmentally safe recycling. Business users should contact their supplier for further information. If you do so, you will ensure that your disposed product undergoes the necessary treatment, recovery and recycling, thereby preventing negative potential effects on the environment and human health.

## DECLARATION OF CONFORMITY



### **STATEMENT OF COMPLIANCE WITH EU DIRECTIVE**

Hereby, Guangzhou Chicken Run Network Technology Co., Ltd. declares that this GameSir X4a for Xbox Controller is in compliance with Directive 2014/30/EU, 2014/53/EU & 2011/65/EU and its amendment (EU) 2015/863.

## FCC STATEMENT



This device complies with part 15 of the FCC Rules. Operation is subject to the following two conditions:

1. This device may not cause harmful interference, and
2. this device must accept any interference received, including interference that may cause undesired operation.

## Just in Game

Microsoft, Xbox, Xbox Game Pass, Xbox “Sphere” Design are trademarks of the Microsoft group of companies. All other trademarks are the property of their respective owners.

## FCC Caution

(1)§ 15.19 Labelling requirements.

This device complies with part 15 of the FCC Rules.

Operation is subject to the following two conditions:

1. This device may not cause harmful interference, and
2. this device must accept any interference received, including interference that may cause undesired operation.

§ 15.21 Changes or modification warning

Any Changes or modifications not expressly approved by the party responsible for compliance could void the user’s authority to operate the equipment.

§ 15.105 Information to the user.

**Note:** This equipment has been tested and found to comply with the limits for a Class B digital device, pursuant to part 15 of the FCC Rules. These limits are designed to provide reasonable protection against harmful interference in a residential installation. This equipment generates uses and can radiate radio frequency energy and, if not installed and used in accordance with the instructions, may cause harmful interference to radio communications. However, there is no guarantee that interference will not occur in a particular installation. If this equipment does cause harmful interference to radio or television reception, which can be determined by turning the equipment off and on, the user is encouraged to try to correct the interference by one or more of the following measures:

- Reorient or relocate the receiving antenna.
- Increase the separation between the equipment and receiver.
- Connect the equipment into an outlet on a circuit different from that to which the receiver is connected.
- Consult the dealer or an experienced radio/TV technician for help.

RF warning for Portable device:

The device has been evaluated to meet general RF exposure requirement. The device can be used in portable exposure condition without restriction.

According to §15.247(e)(i) and §1.1307(b)(1), systems operating under the provisions of this section shall be operated in a manner that ensures that the public is not exposed to radio frequency energy level in excess of the Commission’s guidelines.

According to KDB 447498 (2)(a)(i)

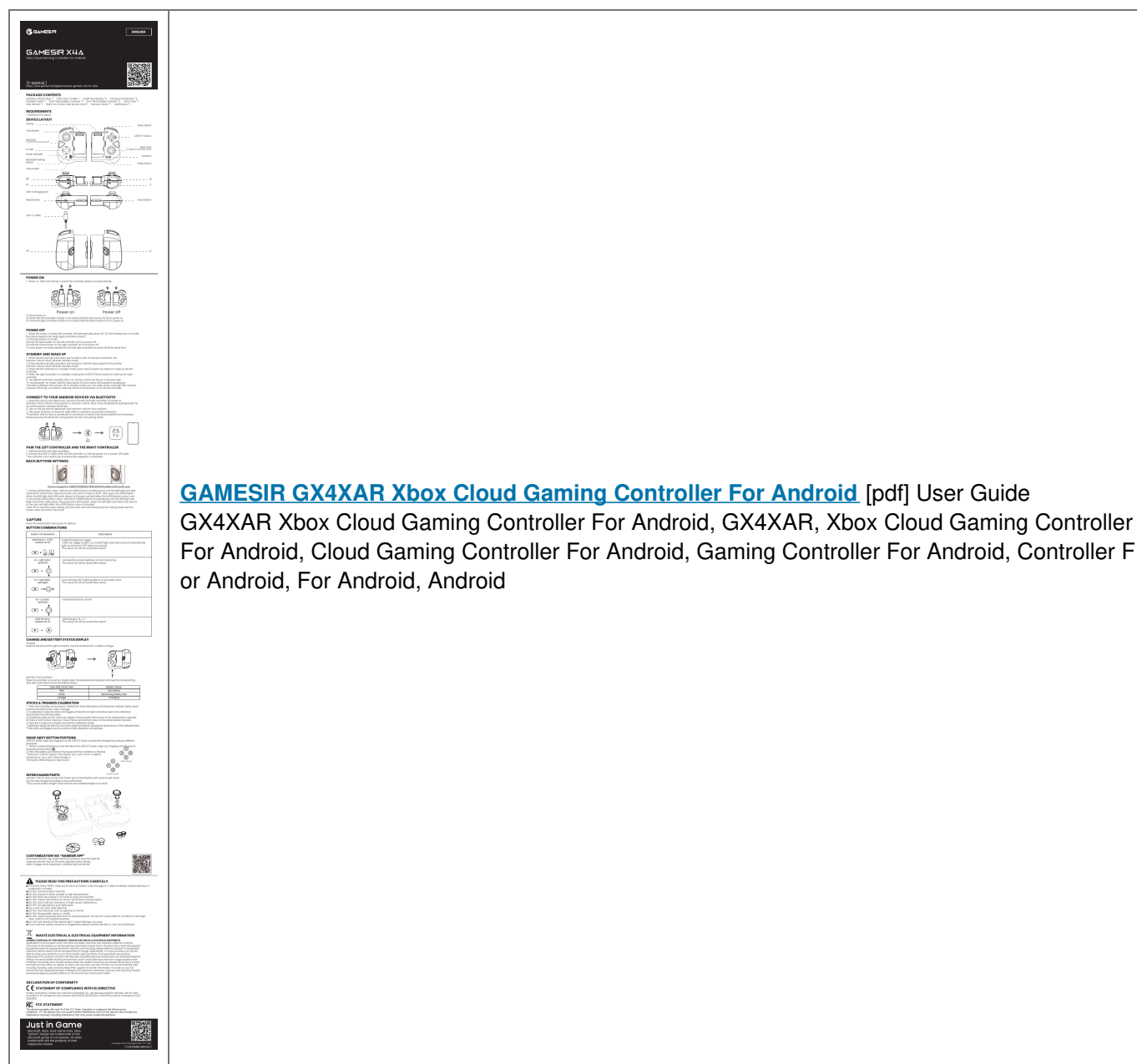
## CUSTOMER SERVICE



[www.gamesir.hk/pages/ask-for-help](http://www.gamesir.hk/pages/ask-for-help)



## Documents / Resources



## References

- [!\[\]\(0551a83d441798e532995956b603f604\_img.jpg\) GameSir | The Global Leading Game Peripheral Brand – GameSir Official Store](#)
- [!\[\]\(54ee180c0037b66a36ce2219a481afde\_img.jpg\) Ask for Help | GameSir – GameSir Official Store](#)
- [!\[\]\(73ae654e8897db9b21f1bf9d9efc07ef\_img.jpg\) Manuals-GameSir X4a for Xbox – GameSir Official Store](#)
- [\*\*User Manual\*\*](#)

**Manuals+, Privacy Policy**

This website is an independent publication and is neither affiliated with nor endorsed by any of the trademark owners. The "Bluetooth®" word mark and logos are registered trademarks owned by Bluetooth SIG, Inc. The "Wi-Fi®" word mark and logos are registered trademarks owned by the Wi-Fi Alliance. Any use of these marks on this website does not imply any affiliation with or endorsement.