

GAMDIAS P2-1203 ARGB PWM 120mm Fan Pack



GAMDIAS P2-1203 ARGB PWM 120mm Fan Pack Instruction Manual

[Home](#) » [GAMDIAS](#) » GAMDIAS P2-1203 ARGB PWM 120mm Fan Pack Instruction Manual 

Contents

- 1 GAMDIAS P2-1203 ARGB PWM 120mm Fan Pack
- 2 FAQ
- 3 package contents
- 4 Turn off power
- 5 Front & Back
- 6 Radiator
- 7 Replace
- 8 Connect
- 9 Instruction
- 10 Documents / Resources
 - 10.1 References



GAMDIAS P2-1203 ARGB PWM 120mm Fan Pack



Package Contents

Item	Description	Quantity
A.	Case & Radiator Fan	x3
B.	Fan Blades	x3
C.	Screws	x12
D.	Washers	x12
E.	Controller Cable	x1
F.	Power Cable	x1
G.	Signal Cable	x1
H.	Adapter Cable	x1
I.	Mounting Tool	x1

Pre-Installation

- Ensure the power is turned off before commencing installation.

Installation Steps

1. Attaching the Fan to the Case

Position the fan in the desired location inside the case, aligning the screw holes of the fan with those of the case or radiator. Secure the fan using the provided screws and washers.

2. Connecting the Fan

Use the controller cable (E) to connect the fan to the controller, the power cable (F) to connect the controller to the power supply unit (PSU), and the signal cable (G) for the motherboard connection. If needed, use the

adapter cable (H) for compatibility.

3. Fan Blade Replacement (Optional)

If necessary, remove the original fan blade and replace it with the provided spare by gently pulling on the center of the fan and pressing the new blade into place.

Additional Configuration

- For additional fan setups, extra fans can be purchased and connected using the same cables and methods described above.
- Connect the controller to the motherboard CPU fan header, ARGB or ADD header depending on your motherboard's available connections.

Specifications

Connector Type	4-pin PWM
Voltage	12V
Current	0.38 A
Power Consumption	4.56W

FAQ

Can the fan blades be replaced?

Yes, the fan blades can be replaced by gently pulling on the center of the fan and pressing the new blade into place.

How do I connect additional fans?

Additional fans can be connected using the same controller cable, power cable, and signal cable as the initial setup. Ensure your motherboard has enough headers or consider using a fan hub.

What type of connector is used for the fan?

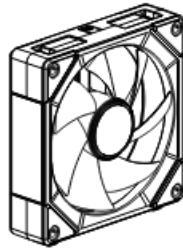
The fan uses a 4-pin PWM connector for power and control.

Is it necessary to turn off the power supply before installation?

Yes, it is crucial to turn off the power supply to prevent any electrical damage or personal injury during installation.

package contents

A.



x3

B.



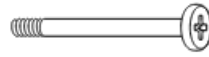
x3

C.



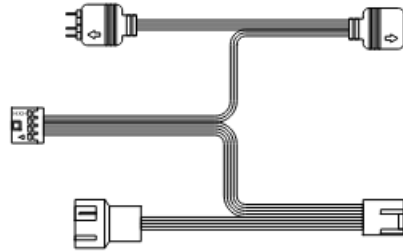
x12

D.



x12

E.



x1

F.



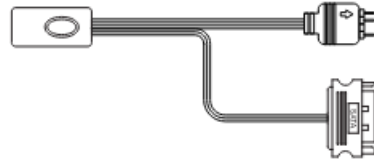
x1

G.



x1

H.



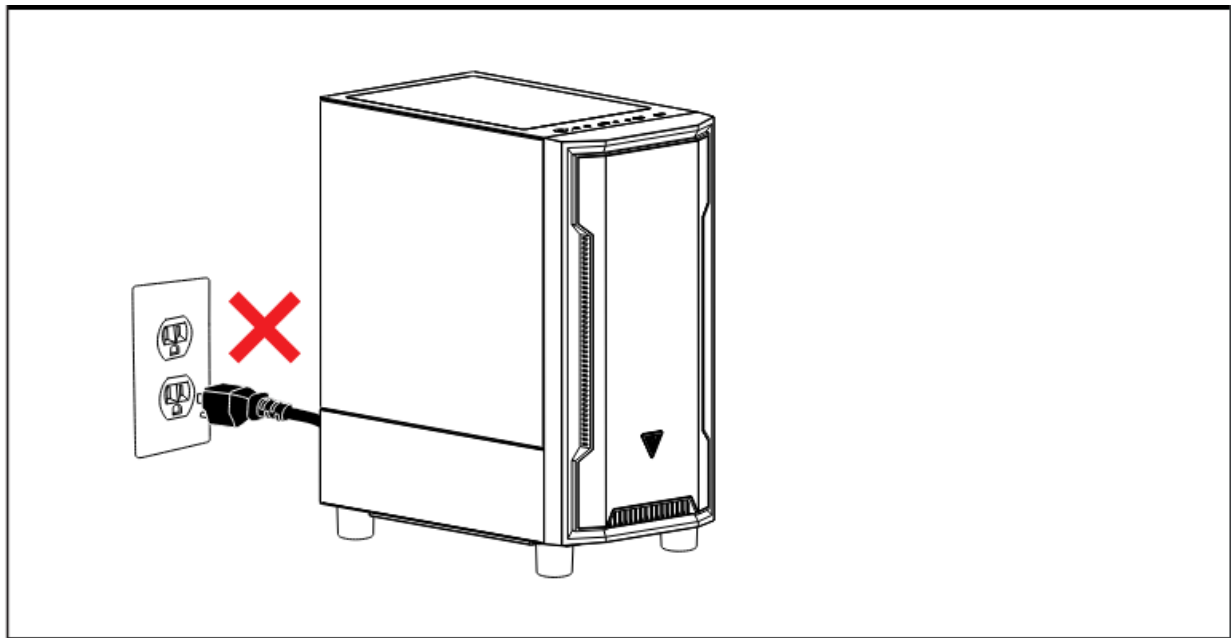
x1

I.

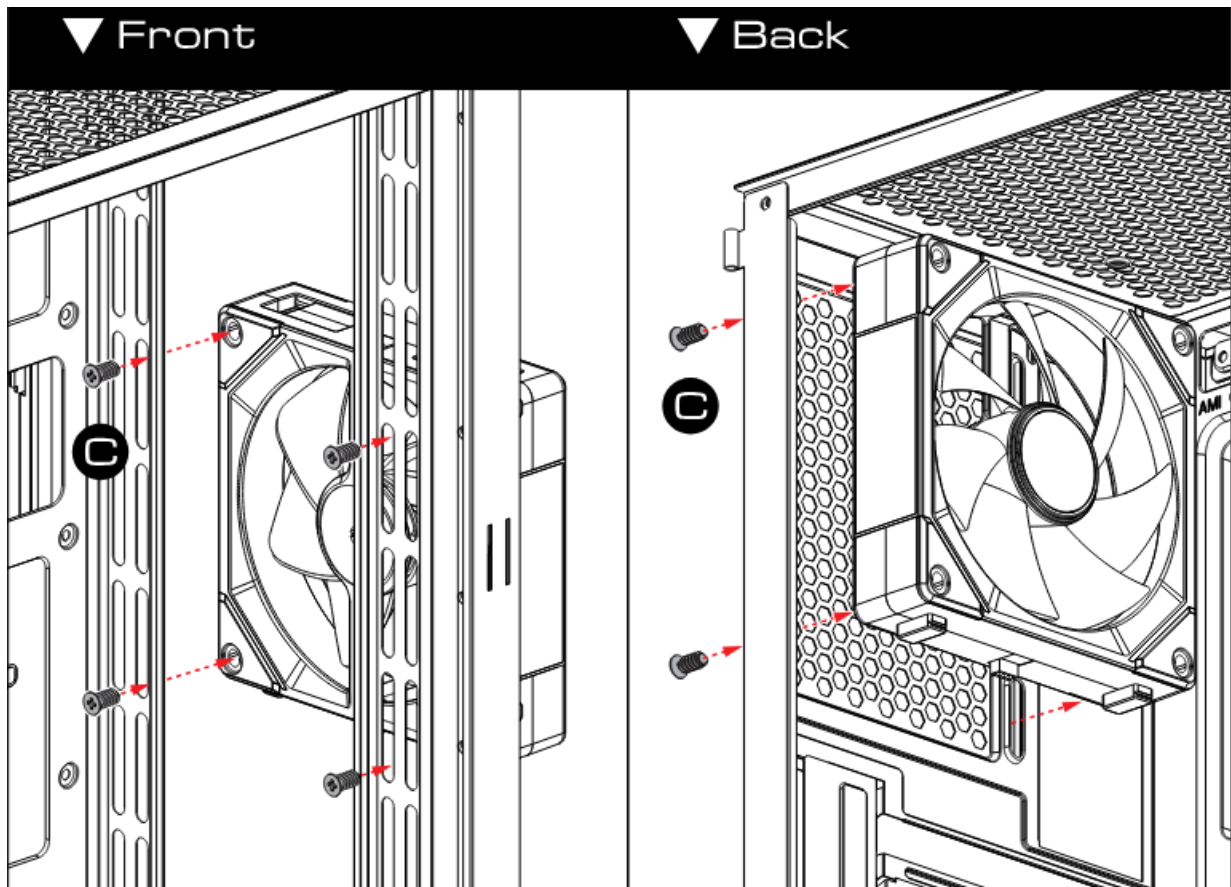


x1

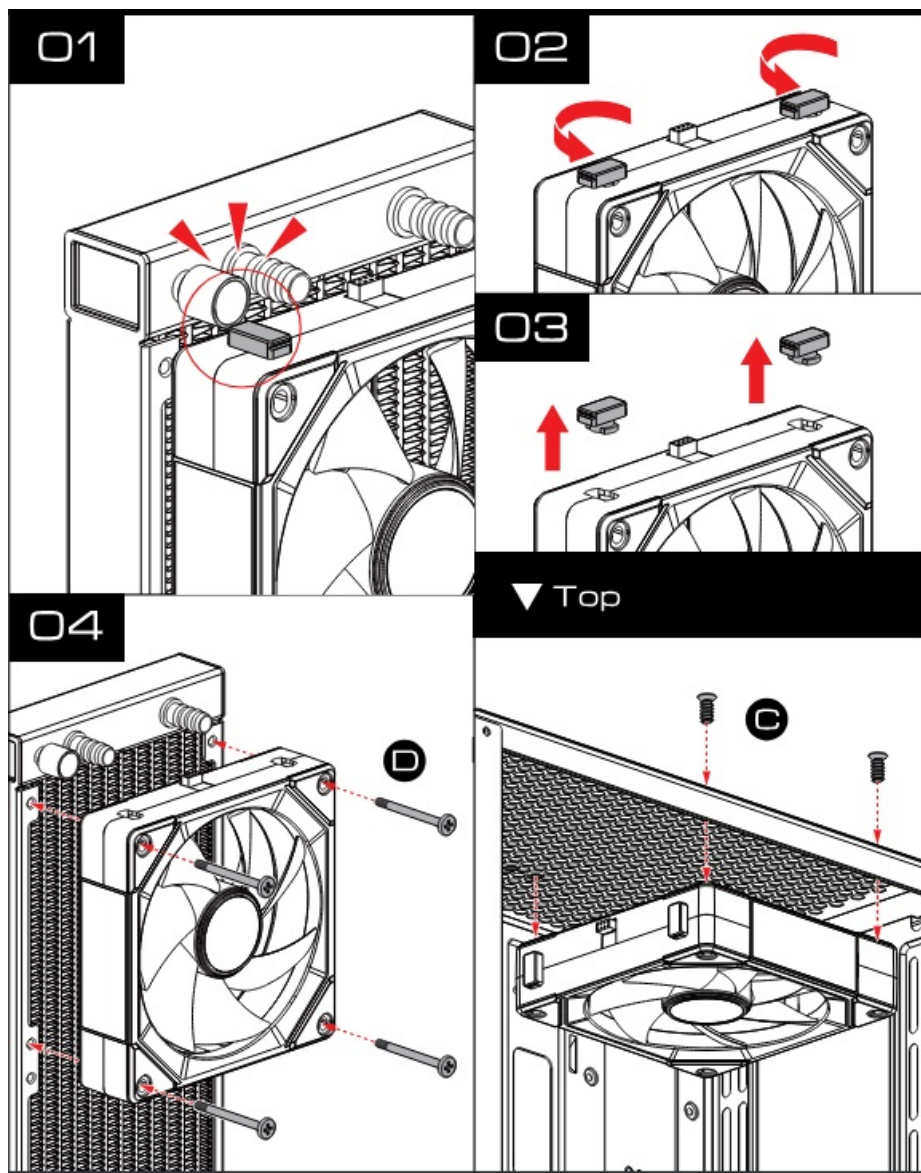
Turn off power



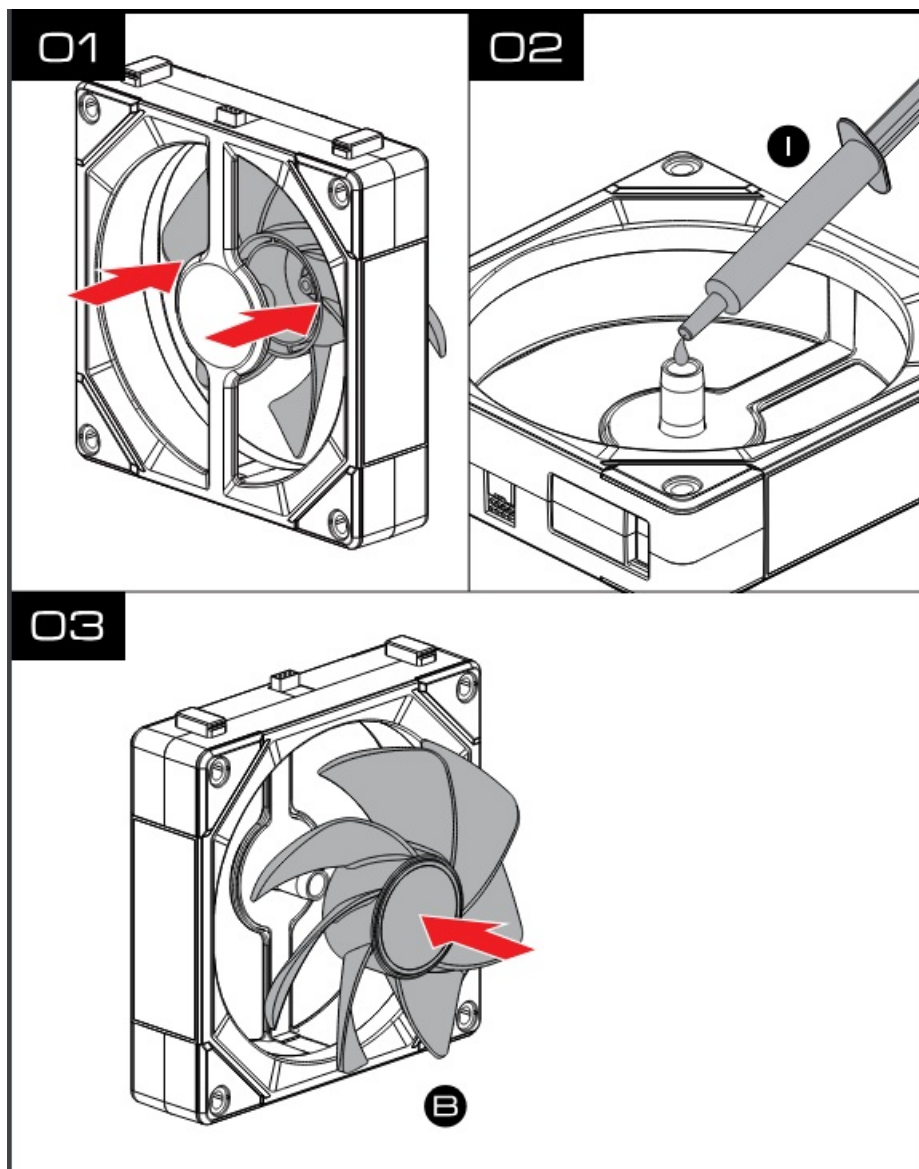
Front & Back



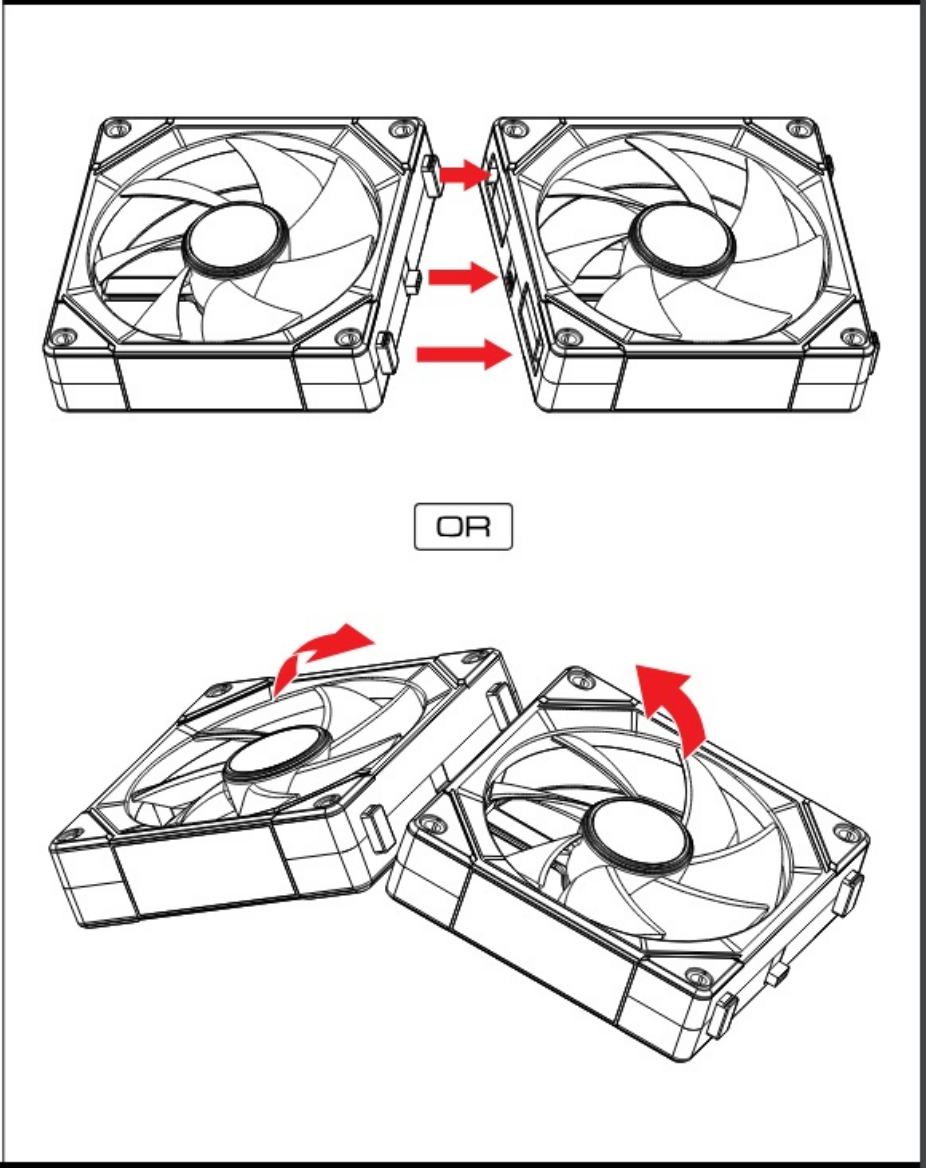
Radiator



Replace



Connect



Instruction

