



Galayou B0C9JH83S3 Smart Battery Powered Wireless Security Camera Installation Guide

[Home](#) » [Galayou](#) » Galayou B0C9JH83S3 Smart Battery Powered Wireless Security Camera Installation Guide



Contents

- [1 Galayou B0C9JH83S3 Smart Battery Powered Wireless Security Camera Installation Guide](#)
- [2 What's in the Box](#)
- [3 Introduction of the Camera](#)
- [4 Product Diagram](#)
- [5 Indicator Lights Status](#)
- [6 Download APP and Register Account](#)
- [7 Add Device](#)
- [8 Select Model](#)
- [9 Camera Setup](#)
- [10 WiFi Setup](#)
- [11 Wait for Connection](#)
- [12 Advanced Features](#)
- [13 Motion Detection](#)
- [14 Smart Power-Saving](#)
- [15 TF Card Storage.](#)
- [16 Cloud Storage](#)
- [17 Questions and Answers:](#)
- [18 Fail to Connect Wi-Fi](#)
- [19 Red Light isn't flashing ? Can't Reset Successfully ?](#)
- [20 APP is showing “](#)
- [21 Cloud Storage](#)
- [22 APP Can't Recognize the TF Card ?](#)
- [23 Read More About This Manual & Download PDF:](#)
- [24 Documents / Resources](#)

Galayou B0C9JH83S3 Smart Battery Powered Wireless Security Camera Installation Guide



What's in the Box



Battery Camera



Base



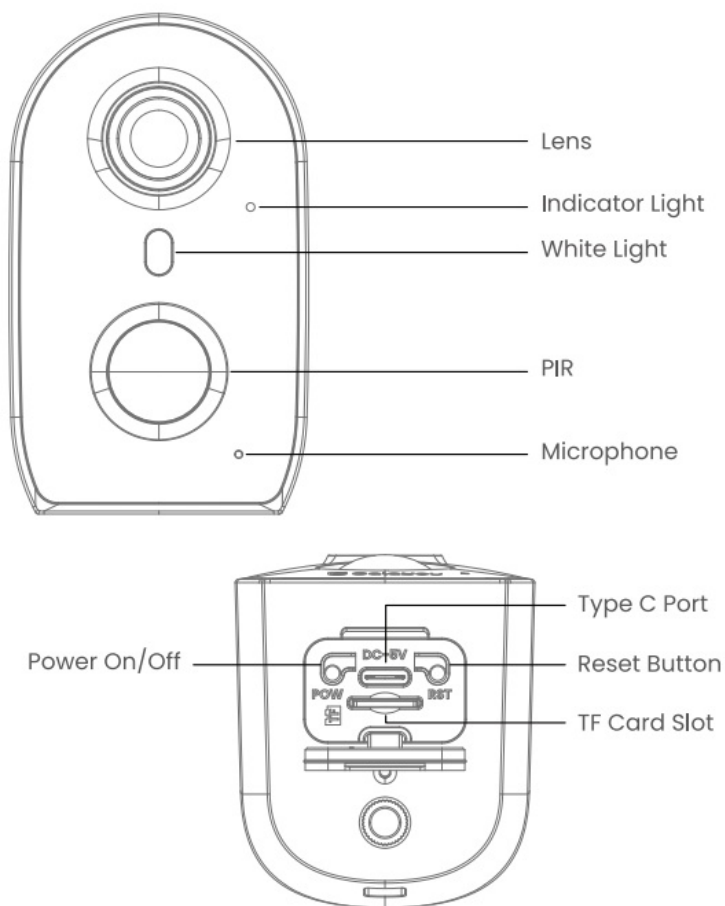
Power cable



Mounting Screws*6

Introduction of the Camera

Product Diagram



Indicator Lights Status

Light Status	Camera Status
Red light on	Camera is powered on
Flashing red & blue lights	Camera is ready to connect
Blue light flashing	Camera is connecting WiFi
Blue light solid	Succeed to connect WiFi
Red light flashing quickly	1. Reset Camera to factory setting 2. Camera is upgrading firmware

Download APP and Register Account

1. Download and Install APP on the App Store or Google Play to search and download the “Wansview Cloud” APP on your smartphone. Or scan the below QR code to get the APP.

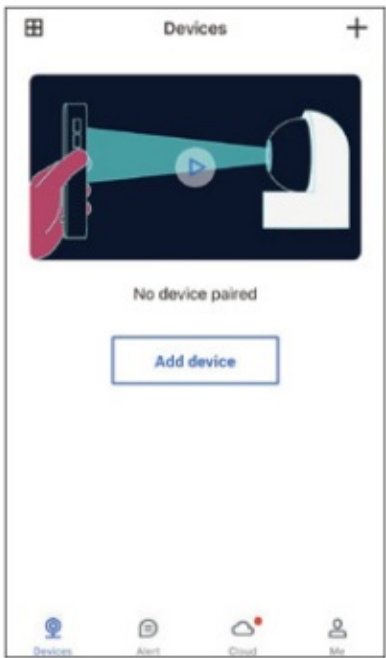


2. Register Account Open the “Wansview Cloud” APP and register an account with your email and activate it. Tips:

Your password must be 8-16 characters, and contain atleast three of the following categories: numbers, uppercase letters, lowercase ltters,or special characters You willthen receive an activation code in your e-mail. Please enter this code in the AP, and login. Ifyou don't receive the activation code, please contact us with your account information: 9 supportus@galayou-store.com support.uk@galayou-store.com We wil help you activatet.

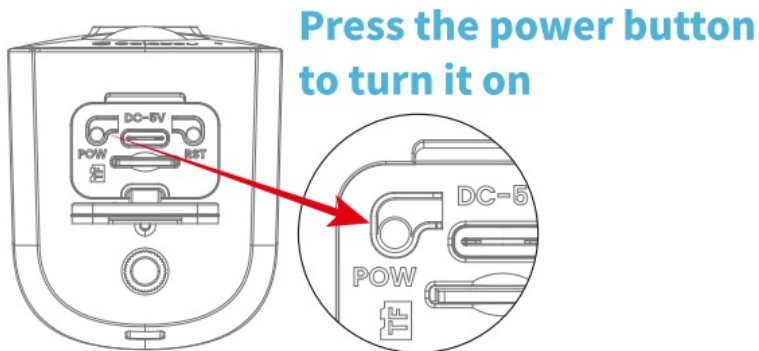
Add Device

Before adding a device on the APP, please be sure that your smartphone is connected to 2.4Ghz WiFi. 5Ghz WiFi is not supported.
And then click -Add Device or click “+”



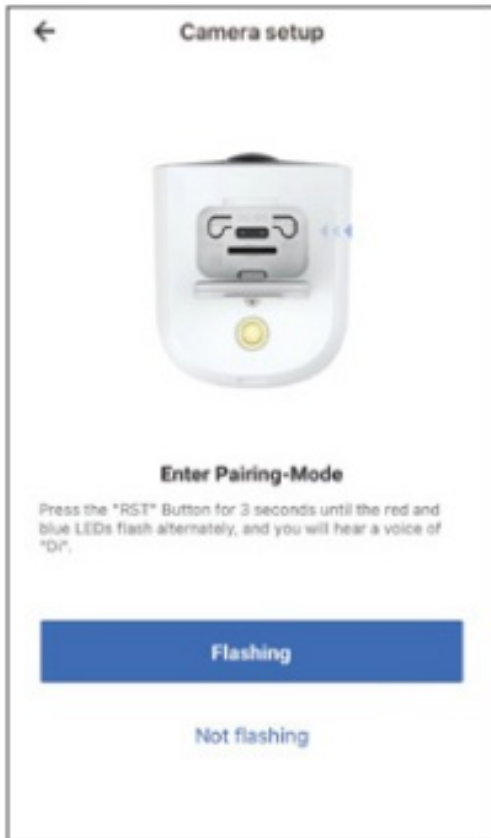
Select Model

2 Select Brand GALAYOU–HModel R2



Camera Setup

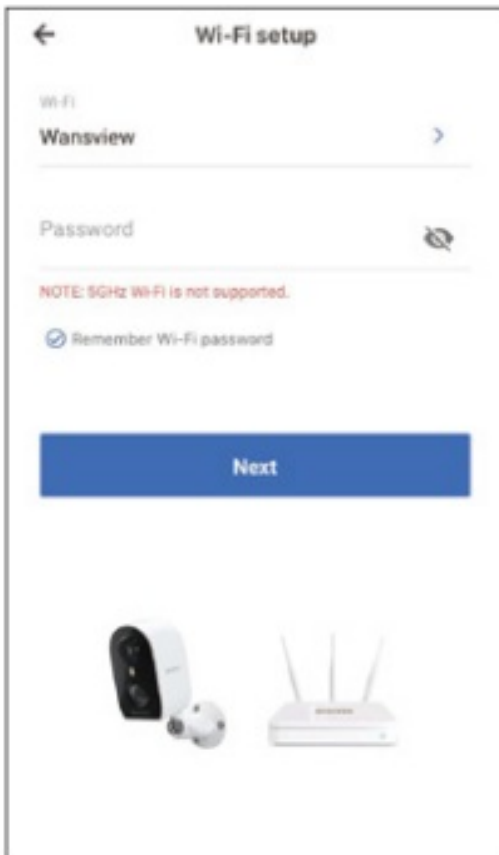
@ Place the camera near the router, within 1 meter. Power o the camera, then wait 1-2 minutes for the camera's indicator light to flash Blue and Red. Once this happens, click "Flashing"



WiFi Setup

Your 2.4Ghz Wifi name is obtained automatically, enter your WiFi password, click * & button to check whether the WiFi password is correct, There shouldn't be any spaces in your password.

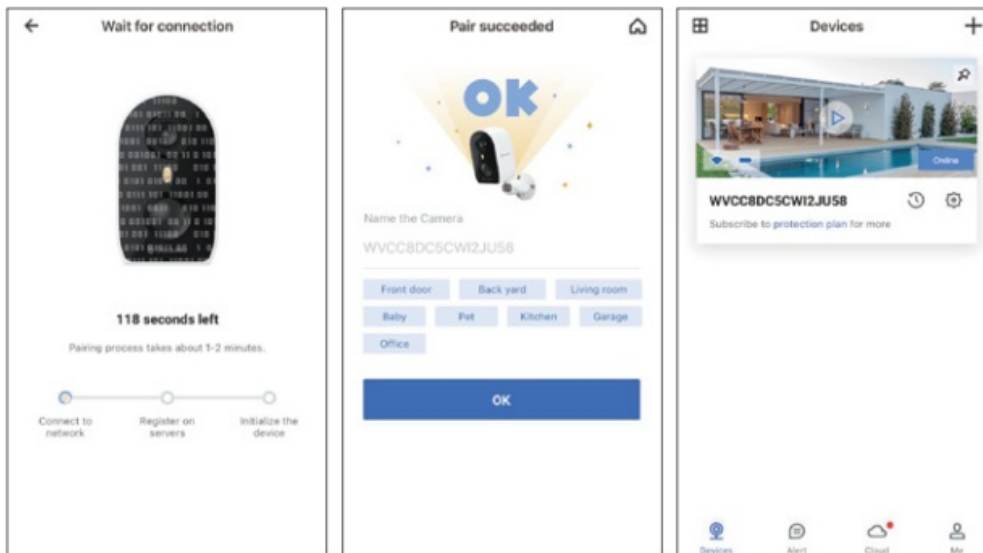
*If your APP doesn't recognize the WiFi name. automatically, please activate the GPS and location authorization on the settings of your smartphone. Then go back to the previous page *Camera Setup" and then click *Flashing" to check if the AP recognizes the Wi name automatically



Place the QR code 3-8 nches i front of the camera lens. Ifyou hear “QR code scanning i successful”, please press Next”



Wait for Connection



Blue light flashing quickly means the Wi-Fi is connecting. Blue light flashing slowly means the Wi-Fi is connected. Blue light on solid means the pairing is successful. You can modify the name of the camera and click "OK" to view the live video.

Advanced Features



7/24 Monitoring 24h with built-in IR Cut filter and infrared lights you can view clear camera image under day/night mode, 24 hours monitoring with a peace of mind.



With the built-in microphone and speaker, you can communicate not only with the mailman but also with your family at any time, without having to face each other.



Motion Detection

With Built-in PIR sensor, it supports to capture moving objects and automatically trigger IOs short alarm recording and real-time push notifications. To reduce false alarms and improve accuracy, you can apply the sensitivity level to low for trigger the PIR algorithm.



Smart Power-Saving

We do the intelligent power-saving treatment on hardware and software. Support auto hibernation. When someone enters into the PIR detecting Range, the camera will wake up automatically.



TF Card Storage.

Insert a TF card (max 128GB, not included), you can record alarm video to the TF card without using cloud storage. If the camera is working with built-in batteries only, it can record up to 60 seconds of motion video. If the camera is connected with the external power supply like power cable or solar panel, the camera will record the motion video until the motion stops.



Cloud Storage

After enabling cloud storage, alarm records could be automatically saved on the cloud server without data loss or corruption.

Questions and Answers:

If you can't find solutions with this guide, please contact our customer service to help with a photo of the label including a QR code on the bottom of the camera: 0 supportus@galaxy-store.com B supportuk@galaxy-store.com

Fail to Scan? If you fail to scan the QR code on the smartphone, please try the following solutions: @ Make sure the indicator light flashes red and blue. If not, press the reset button until the red light flashes quickly @ Adjust the distance between the camera's lens and the smartphone to 3-8 inches, adjust the brightness to medium, or double-click the QR code to enlarge it to scan.

Fail to Connect WiFi

If you fail to connect WiFi for the first time, please try the following solutions: @ Be sure that the WiFi is 2.4GHz, our camera doesn't support 5GHz. @ Please activate the GPS and location authorization on the settings of smartphone, @ Tap " " button to make sure the WiFi password is correct. There shouldn't be any spaces. @ Before camera setup, make sure the indicator light is flashing red and blue.

Red Light isn't flashing? Can't Reset Successfully?

Red Light isn't flashing? Can't Reset Successfully? If you can't reset successfully, and the red light isn't flashing? please try the following solutions: Hold the "Reset" button for about 5-10 seconds to see whether the red light flashes quickly? ~ If so, please wait about 1-2 minutes for the light to flash Red and Blue, and then you can reconnect WiFi.

APP is showing "

Of @ Ensure the router is working properly. Reboot the router and camera to see if the camera reconnects after that. @ If not, reset the camera by holding the Reset button 5105 and reconnect the camera. @ The distance between the camera and router should be within 5 meters, so camera can receive good WiFi connection.

Cloud Storage

"Wansview Cloud" APP is FREE, Cloud Service is Optional Even if you don't want to activate the cloud storage, you can still use the camera normally


APP Can't Recognize the TF Card?

@ Make sure the TF card works properly by testing the write and read files functions on a computer via a TF card reader, then insert the TF card in the camera. @ Please power off the device before inserting the TF card. (3 The device only supports FAT32/exFAT32 format, 128GB Max; please format the TF card into FAT32/exFAT32 format on your computer via a card reader.

Support E-mail : I supportus@galayou-store.com (U4 support.uk@galayou-store.com
AQ TEL:+13236863288 Opening hours ;6 pm – 3 am (PST Time) from Monday to Friday

Read More About This Manual & Download PDF:

Documents / Resources

 <p>R2 Smart Battery Powered Wireless Security Camera Quick Installation Guide</p>	<p>Galayou B0C9JH83S3 Smart Battery Powered Wireless Security Camera [pdf] Installation Guide</p> <p>B0C9JH83S3 Smart Battery Powered Wireless Security Camera, B0C9JH83S3 Smart Battery Powered Wireless Security Camera, Smart Battery Powered Wireless Security Camera, Battery Powered Wireless Security Camera, Powered Wireless Security Camera, Wireless Security Camera, Security Camera</p>
--	--

Manuals+.