

FXLuminaire 3DP Path and Area Lighting Fixtures



# FXLuminaire 3DP Path and Area Lighting Fixtures Installation Guide

[Home](#) » [FXLuminaire](#) » FXLuminaire 3DP Path and Area Lighting Fixtures Installation Guide 

## Contents

- [1 FXLuminaire 3DP Path and Area Lighting Fixtures](#)
- [2 Product Specifications](#)
- [3 Product Usage Instructions](#)
- [4 Classic and CONTEMPORARY STYLES](#)
- [5 Timeless and Elegant FINISHES](#)
- [6 Path and Area Lighting FIXTURES](#)
- [7 TRADITIONAL](#)
- [8 MODERN](#)
- [9 DECORATIVE](#)
- [10 BORDERING with Path Lights](#)
- [11 COMMERCIAL Path Lights](#)
- [12 Path Light SPACING CALCULATOR](#)
- [13 Documents / Resources](#)
  - [13.1 References](#)
- [14 Related Posts](#)



**FXLuminaire 3DP Path and Area Lighting Fixtures**



## Product Specifications

- **Product Name:** Path and Area Lighting Fixtures
- **Styles:** Traditional Area Lights, Directional Path Lights, Marker Lights
- **Finishes:** Metal (Natural Copper, Natural Brass, Nickel Plate), Powder Coat (Bronze Metallic, Desert Granite, Weathered Iron, Sedona Brown, Black, Flat White, Silver), Composite (Black Composite)

## Product Usage Instructions

### Traditional Area Lights

Traditional area lights provide timeless elegance and are available in various finishes including Copper, Brass, and more. Follow these steps to install:

1. Choose a suitable location for the area light.
2. Secure the fixture in place using the appropriate mounting hardware.
3. Connect the G4 LED lamp to the power source.

### Directional Path Lights

Directional path lights offer precision lighting for your outdoor space. Here's how to set them up:

1. Determine the direction in which you want the light to shine.
2. Install the directional path light securely in the ground or on a surface.
3. Connect the G4 LED lamp to the fixture.

### Marker Lights

Marker lights provide understated simplicity and are available in various finishes. To use marker lights:

1. Select the desired location for the marker light.
2. Install the marker light using the appropriate installation method.
3. Connect the lamp to a power source.

## Frequently Asked Questions (FAQ)

- **Q: Can I use different types of lamps with these fixtures?**

A: Yes, depending on the specific fixture model, you can use 1, 3, or G4 LED lamps with the fixtures.

- **Q: Are these fixtures suitable for all weather conditions?**

A: The fixtures come in various materials and finishes, some of which are designed to withstand different weather conditions. It's recommended to check the product specifications for more details on weather resistance.

- **Q: How do I clean and maintain these lighting fixtures?**

A: To clean the fixtures, use a soft cloth and a mild cleaning solution. Avoid abrasive materials that may damage the finish. Regularly check for any loose connections or signs of wear and tear to ensure proper functionality.

## **PATH LIGHT INSPIRATION GUIDE**

Landscape & Architectural Lighting



### **Classic and CONTEMPORARY STYLES**

The fixtures you choose depend on your specific needs, design preferences, and the mood you want to create. Whether it's the timeless elegance of area lights, the precision of directional lights, or the understated simplicity of marker lights, each option contributes to a well-balanced outdoor lighting scheme. Choose from a variety of styles in metal and powder-coat finishes to complement an array of settings.

- **TRADITIONAL AREA LIGHTS**



- 360° coverage
- Wide, even glow for general illumination

- **DIRECTIONAL PATH LIGHTS**

- Direct focus towards a specific orientation
- Reduce light trespass
- Install farther away from the edge of the walking surface
- Ideal for changes in elevation

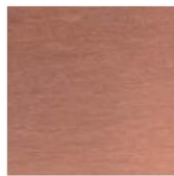
- **MARKER LIGHTS**

- Offer a viewable light source
- Provide effective illuminance with a soft and inviting direct
- Allow for a modern vibe



## Timeless and Elegant FINISHES

### METAL



**CU**  
Natural Copper



**BS**  
Natural Brass



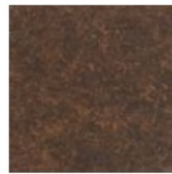
**NP**  
Nickel Plate



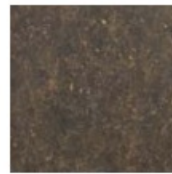
**AB on copper**  
Antique Bronze



**AB on brass**  
Antique Bronze



**AT on copper**  
Antique Tumbled



**AT on brass**  
Antique Tumbled

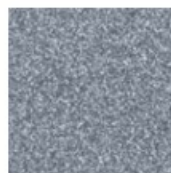
## POWDER COAT



**BZ**  
Bronze Metallic



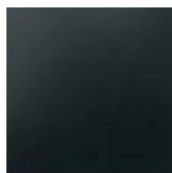
**DG**  
Desert Granite



**WI**  
Weathered Iron



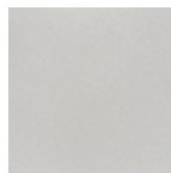
**SB**  
Sedona Brown



**FB**  
Black



**FW**  
Flat White



**SV**  
Silver

## COMPOSITE



**BC**  
Black Composite

## Path and Area Lighting FIXTURES

### AREA LIGHTS



#### ◀ DP

**Height:** 13.5" (343 mm)\*  
**Diameter:** 2.9" (74 mm)  
**Lamp:** G4 LED  
**Finish:** CU, NP<sup>‡</sup>, BZ, DG, WI, SB, FB, FW<sup>‡</sup>  
**Material:** Copper/Brass



#### ◀ EP-31

**Height:** 15.2" (386 mm)\*  
**Diameter:** 4.8" (122 mm)  
**Lamp:** G4 LED  
**Finish:** BC  
**Material:** Mold-Injected Composite



#### ◀ TM/PL + color

**Height:** TM: 15.0" (381 mm)\*  
PL: 15.6" (396 mm)  
**Diameter:** TM: 5.0" (127 mm)  
PL: 6.0" (152 mm)  
**LED:** 1", 3", or G4 Lamp  
**Finish:** BZ, DG, WI, SB, FB, FW<sup>‡</sup>, SV<sup>‡</sup>  
**Material:** Aluminum



#### ◀ HC/SP/JS/DL + color

**Height:** 15.6" (396 mm)\*  
**Diameter:**  
SP: 3.6" (92 mm)  
DL: 6.3" (159 mm)  
**LED:** 1", 3", or G4 Lamp  
**Finish:** AB, AT, CU, NP<sup>‡</sup>, BZ, DG, WI, SB, FB, FW<sup>‡</sup>, SV<sup>‡</sup>  
**Material:** Copper/Brass or Aluminum



#### ◀ SC/CA + color

**Height:** 15.4" (391 mm)\*  
**Diameter:**  
SC: 4.7" (119 mm)  
CA: 7.6" (193 mm)  
**LED:** 1", 3", or G4 Lamp  
**Finish:** CU, NP<sup>‡</sup>, BZ, DG, WI, SB, FB, FW<sup>‡</sup>, SV<sup>‡</sup>  
**Material:** Copper/Brass or Aluminum



#### ◀ PF/DM + color

**Height:** 15.5" (394 mm)\*  
**Diameter:**  
PF: 4.0" (102 mm)  
DM: 7.1" (180 mm)  
**LED:** 1", 3", or G4 Lamp  
**Finish:** CU, NP<sup>‡</sup>, BZ, DG, WI, SB, FB, FW<sup>‡</sup>, SV<sup>‡</sup>  
**Material:** Copper/Brass or Aluminum



#### ◀ C-PL4/C-PL7

**C-PL4 Height:** 21.5" (546 mm)  
**C-PL7 Height:** 15.5" (394 mm)  
**Diameter:**  
C-PL4: 4.3" (109 mm)  
C-PL7: 6.5" (165 mm)  
**Riser Diameter:**  
1.0" (25 mm)  
**LED:** G4 Lamp  
**Finish:** AB  
**Material:** Brass



#### ◀ GN

**Height:** 22.1" (563 mm) with 18" (450 mm) riser  
**Diameter:** 10.0" (254 mm)  
**Riser Diameter:** 1.25" (38 mm)  
**Lamp:** G4 LED  
**Finish:** CU  
**Material:** Copper/Brass



#### ◀ DS/DR

**Height:** 7.6" (193 mm)\*  
**Diameter:** 4.1" (103 mm)  
**LED:** G4 Lamp  
**Finish:** BZ, DG, WI, SB, FB, SV<sup>‡</sup>, FW<sup>‡</sup>, SV<sup>‡</sup>  
**Material:** Aluminum

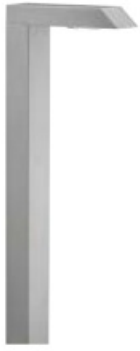
## MARKER LIGHTS



#### ◀ PM + color

**Height:** 14.0" (356 mm)  
XT: 18.5" (470 mm)  
**Diameter:** 2.5" (64 mm)  
**LED:** 1, 3, 6, 9, or MR-16 Lamp  
**Finish:** BZ, DG, WI, SB, FB, SV<sup>‡</sup>, FW<sup>‡</sup>  
**Material:** Aluminum

## DIRECTIONAL PATH LIGHTS: MODERN



#### ◀ M-PL + color

**Height:** 21.3" (541 mm)  
**Width:** 2.2" (55 mm)  
**Depth:** 7.4" (187 mm)  
**LED:** 1  
**Finish:** BZ, DG, WI, SB, FB, FW<sup>‡</sup>, SV<sup>‡</sup>  
**Material:** Aluminum



#### ◀ M-PZ + color

**Height:** 22.1" (561 mm)  
**Width:** 2.5" (64 mm)  
**Depth:** 7.4" (187 mm)  
**LED:** 1, 3  
**Finish:** BZ, DG, WI, SB, FB, FW<sup>‡</sup>, SV<sup>‡</sup>  
**Material:** Aluminum



#### ◀ M-PK + color

**Height:** 22.5" (572 mm)  
**Width:** 2.2" (56 mm)  
**Depth:** 7.4" (187 mm)  
**LED:** 1, 3  
**Finish:** BZ, DG, WI, SB, FB, FW<sup>‡</sup>, SV<sup>‡</sup>  
**Material:** Aluminum



#### ◀ M-PJ + color

**Height:** 22.1" (561 mm)  
**Width:** 2.8" (71 mm)  
**Depth:** 7.4" (187 mm)  
**LED:** 1, 3, 6  
**Finish:** BZ, DG, WI, SB, FB, FW<sup>‡</sup>, SV<sup>‡</sup>  
**Material:** Aluminum

## DIRECTIONAL PATH LIGHTS: DECORATIVE



#### ◀ FG + color

**Height:** 18.0" (457 mm)  
**Diameter:** 5.0" (127 mm)  
**LED:** 1, 3, 6, 9, or SCB Lamp  
**Finish:** AB, AT, CU, NP<sup>‡</sup>, BZ, DG, WI, SB, FB, FW<sup>‡</sup>, SV<sup>‡</sup>  
**Material:** Copper/Brass



#### ◀ TD + color

**Height:** 18.0" (457 mm)  
**XT:** 29.5" (749 mm)  
**Diameter:** 5.0" (127 mm)  
**LED:** 1, 3, 6, 9, or SCB Lamp  
**Finish:** AB, AT, CU, NP<sup>‡</sup>, BZ, DG, WI, SB, FB, FW<sup>‡</sup>, SV<sup>‡</sup>  
**Material:** Copper/Brass



#### ◀ AL

**Height:** 27.5" (699 mm)  
**Diameter:** 5.6" (142 mm)  
**Lamp:** SCB Lamp  
**Finish:** BZ, DG, WI, SB, FB, FW<sup>‡</sup>, SV<sup>‡</sup>  
**Material:** Aluminum



#### ◀ RW + color

**Height:** 7.6" (193 mm)  
**Diameter:** 4.1" (103 mm)  
**LED:** 3, 6, 9  
**Finish:** BZ, DG, WI, SB, FB, SV<sup>‡</sup>, FW<sup>‡</sup>, SV<sup>‡</sup>  
**Material:** Aluminum



#### ◀ RL

**Height:** 6.0" (153 mm)  
**Diameter:** 4.0" (102 mm)  
**Lamp:** G4 LED  
**Finish:** CU, NP<sup>‡</sup>, BZ, DG, WI, SB, FB, FW<sup>‡</sup>, SV<sup>‡</sup>  
**Material:** Copper/Brass

## TRADITIONAL

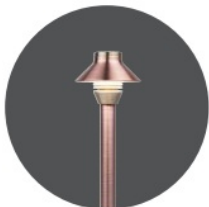
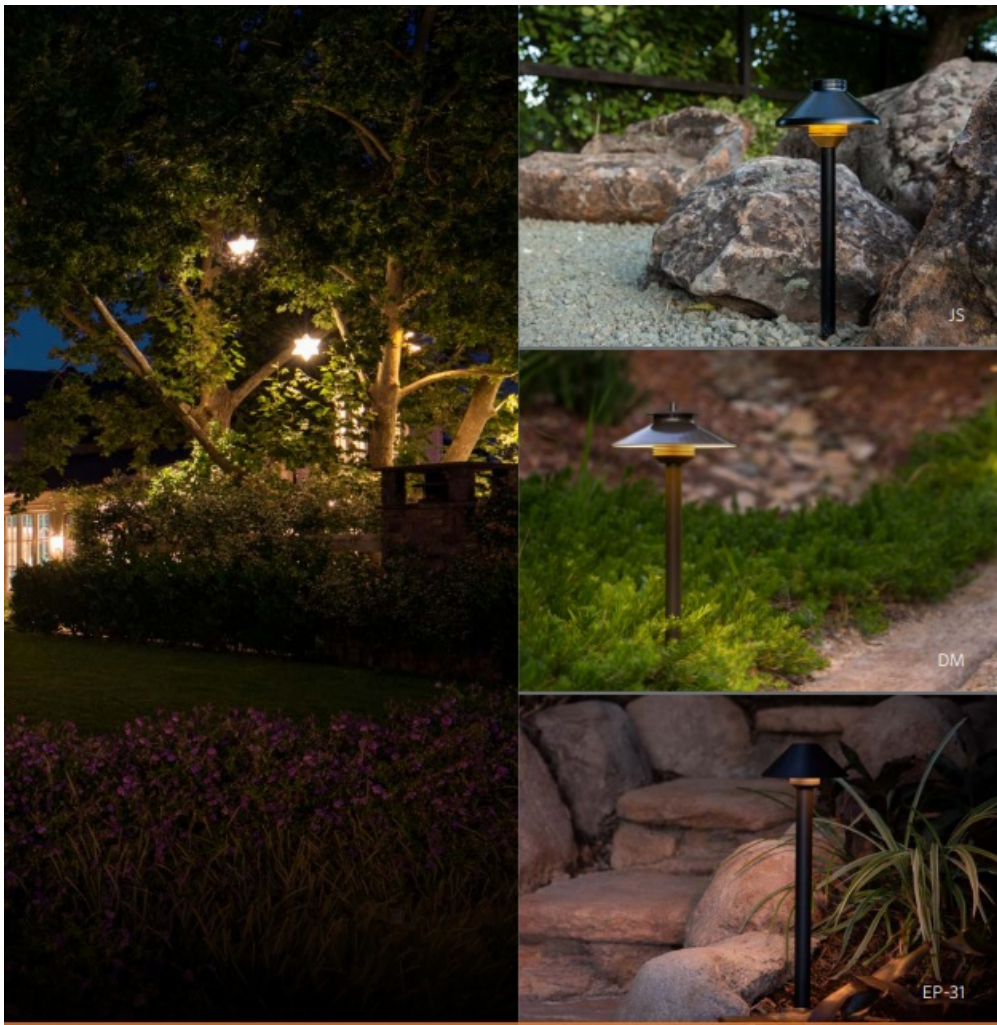
### Path Lights





**Timeless elegance meets functionality.** Traditional path lights provide wide, even illumination for pathways, driveways, and open spaces, enhancing safety and aesthetics.





SP



PL



C-PL7



GN

## MODERN

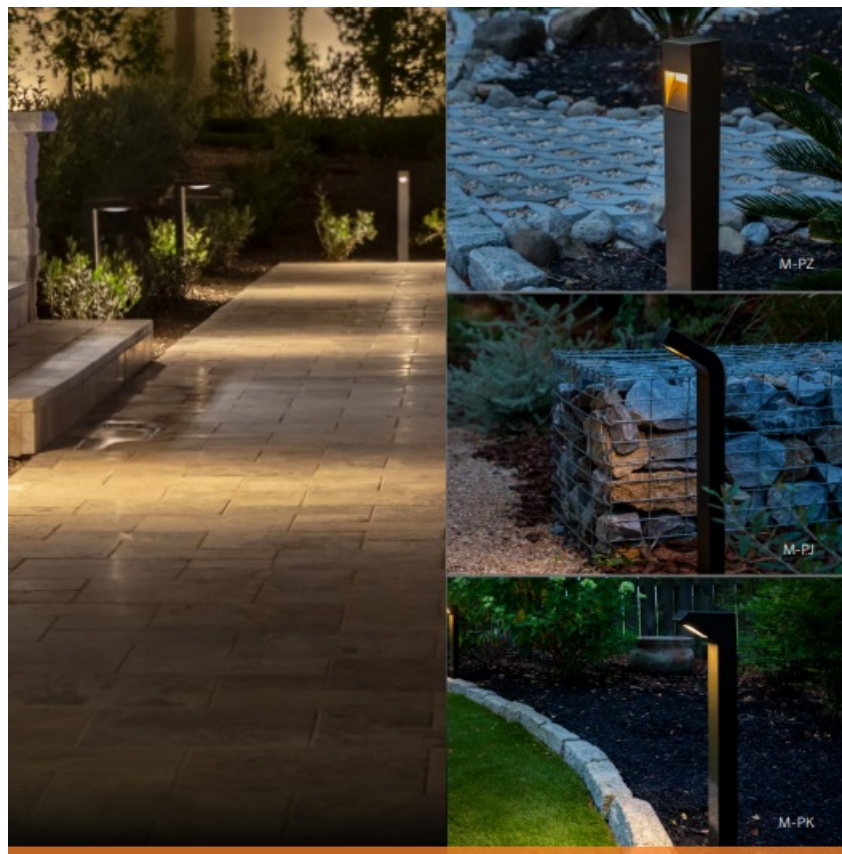
### Path Lights



**Sleek, contemporary designs redefine outdoor lighting.**

Modern path lights combine form and function, illuminating walkways with the perfect blend of style and efficiency.





M-PL



M-PZ



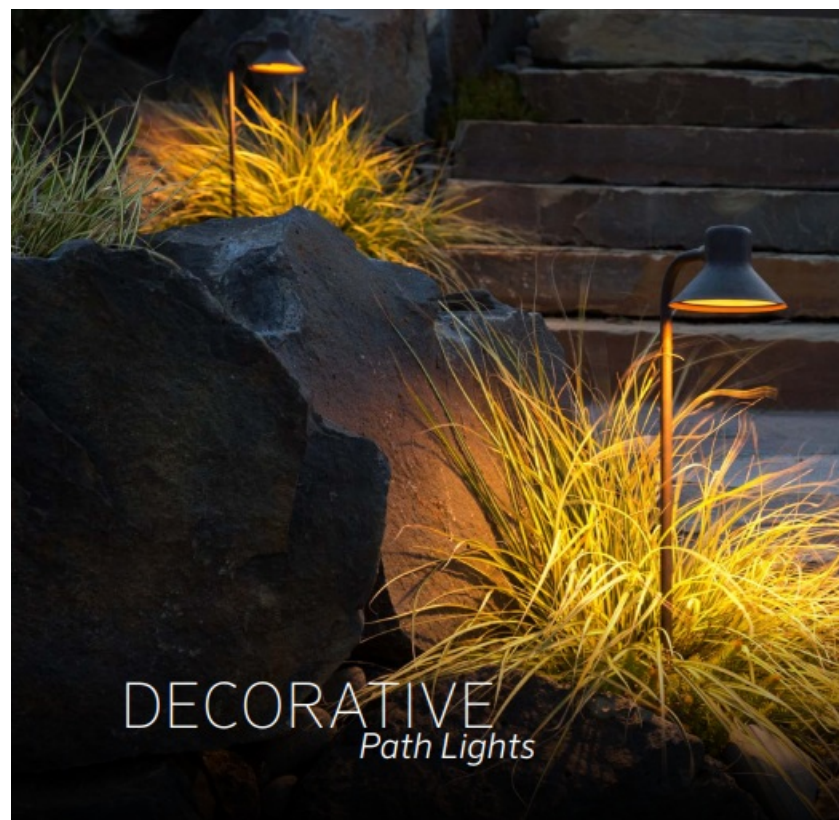
M-PK



M-PJ

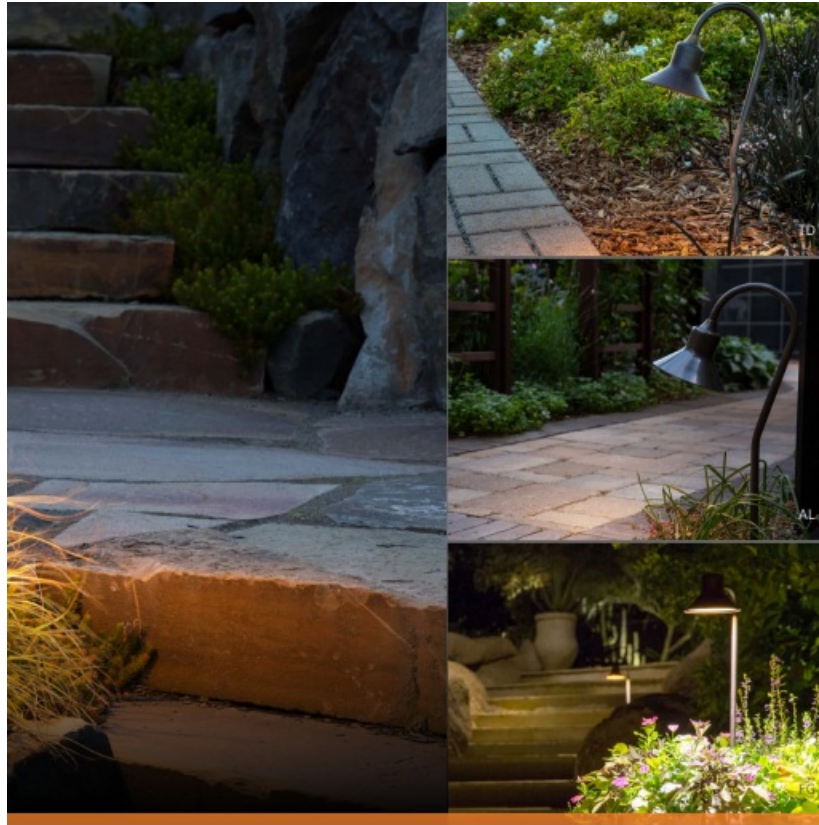
## DECORATIVE

### Path Lights

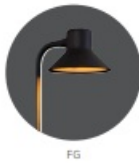


## Discover artistry in illumination.

Decorative path lights transform landscapes into enchanting realms, casting captivating patterns and adding visual intrigue.



TD



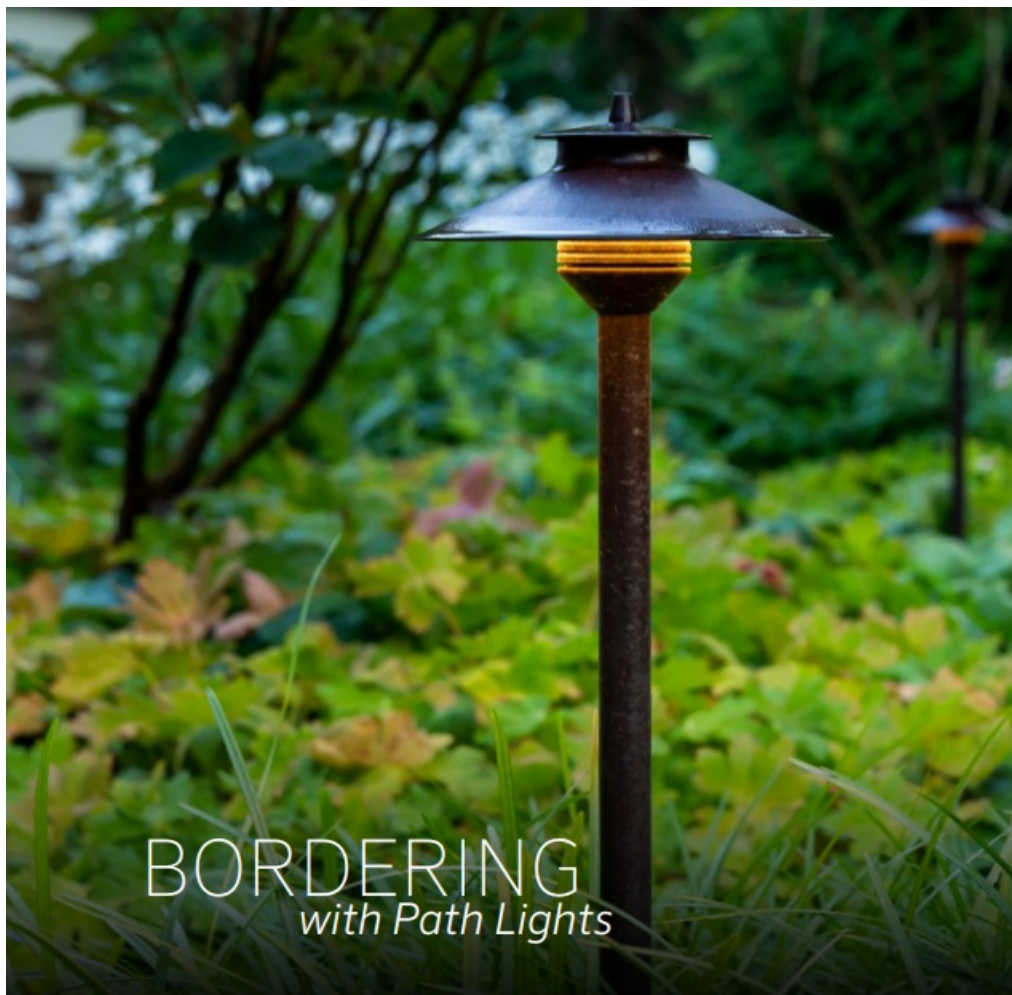
FG



AL

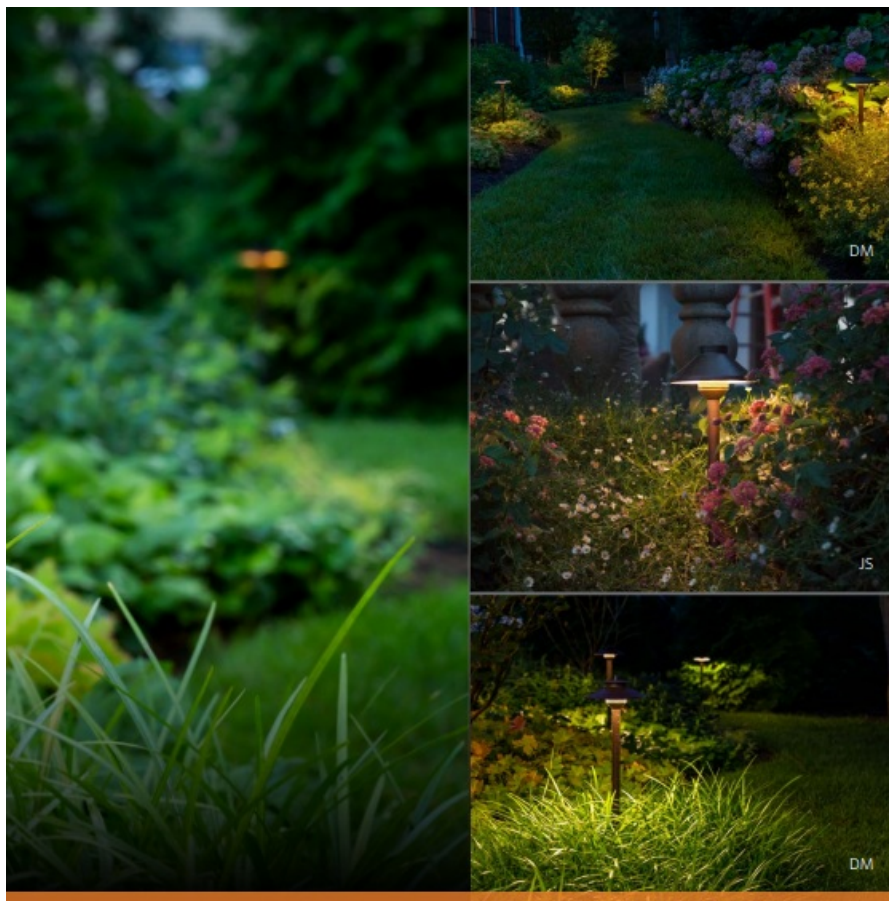
## BORDERING with Path Lights



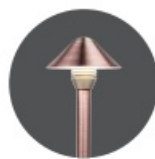


**Take your lighting beyond the path's edge.**

Bordering lights create defined boundaries, guiding footsteps and framing gardens, all while enhancing curb appeal.



JS



SC



PL



TM

## COMMERCIAL Path Lights



**As professional-grade lighting solutions,** commercial path lights and bollards illuminate public spaces, walkways, and business exteriors with reliability and impact.



A-BR10



PM



M-PJ



GN

**COLOR with Path Lights**





**Watch colors come alive with RGBW path lights.** Offering a range of dynamic hues, they allow you to set the mood, celebrate special occasions in style, and create unforgettable outdoor experiences.



## Path Light SPACING CALCULATOR

Eliminate the guesswork of installing path lights by quickly calculating ideal fixture quantity and spacing. The Path Light Spacing Calculator reduces time, labor, and project costs by automatically converting verified photometric data into clear visuals for users of any experience level. This handy tool is free, easy to use, and mobile-friendly, so lighting professionals can access it from anywhere. Use the calculator to make design choices quickly and confidently, so you can deliver professional results every time.

### PROFESSIONAL RESULTS

Simple and Accurate Interface

### NO GUESSWORK

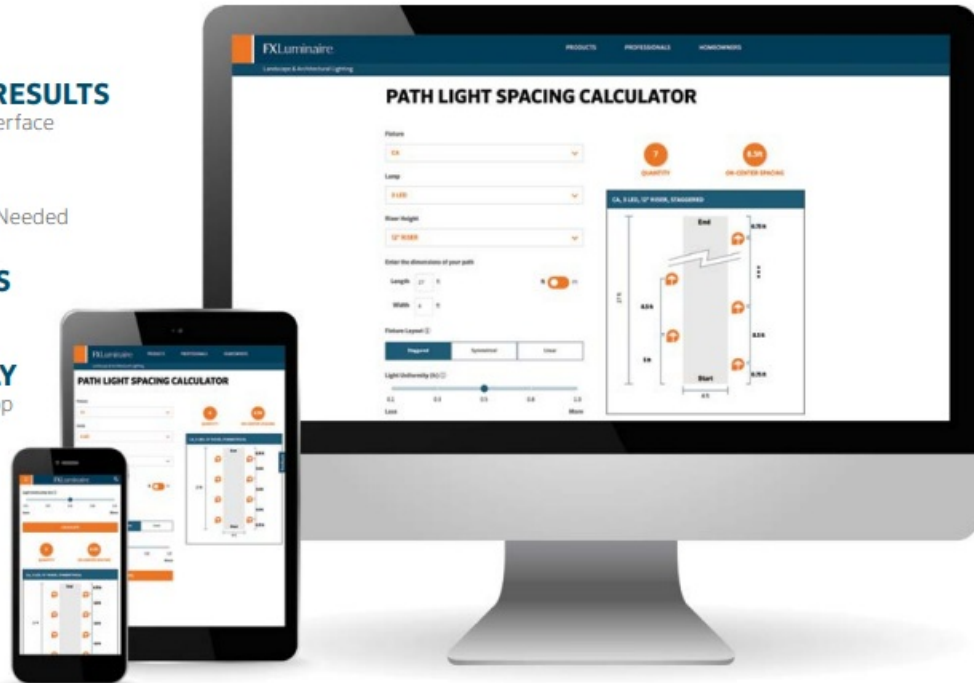
No Expensive Software Needed

### SIMPLE REPORTS

Anyone Can Use

### DEVICE-FRIENDLY

App, Mobile, and Desktop



USING THE PATH LIGHT SPACING CALCULATOR IS AS EASY AS 1-2-3-4



Choose Fixture



Enter Dimension



Choose Layout



Choose Uniformity

[fxl.com/SpacingCalc](https://fxl.com/SpacingCalc)



### What to Expect WITH COPPER

Patina is a result of weathering that forms on the surface of copper, bronze, and similar metals. Often valued for its aesthetic qualities, it creates an organic look that allows FX Luminaire fixtures to blend seamlessly with their surrounding environment. FX Luminaire's copper, brass, and nickel plate finishes will naturally patinate in outdoor environments within a few weeks or more as oxides or carbonates form on the surface from exposure to the

elements. You can also use patina formulas to speed up the process, ensuring elegant performance for years to come.



Copper/Brass after initial installation



Copper/Brass after patina process



Patina in coastal environments

## THE BEAUTY OF PATINA: ENHANCING YOUR COPPER PATH LIGHTS

### THE VALUE OF A PATINA LOOK

**Aged Elegance:** Copper path lights naturally develop a rich, earthy patina over time, adding character and elegance to your outdoor space. Imagine your garden bathed in the warm glow of weathered copper lanterns — their aged appearance exudes timeless charm.

**Low Maintenance:** Unlike other metals that rust or deteriorate, copper gracefully ages without losing its structural integrity. The patina acts as a protective layer, shielding the metal from harsh elements. Say goodbye to constant polishing or worrying about corrosion — copper path lights require minimal upkeep.

**Unique Aesthetics:** Patina isn't just about color; it's an art form.

As copper interacts with environmental factors, it produces an array of hues ranging from deep greens and blues to warm browns and pinks, transforming your path lights into one-of-a-kind works of art.

**Subtle Sophistication:** Unlike shiny, new metals, patinated copper exudes refined sophistication and understated beauty, serving as a testament to superior craftsmanship and enduring quality.

### THE PATINA JOURNEY: EARLY WEEKS AND GEOGRAPHICAL NUANCES

#### EARLY PATINA DEVELOPMENT

**Color Gradation:** In the first few weeks, your copper path lights will begin to exhibit subtle changes. Initially, the patina may appear as a soft, pale green or turquoise hue, indicating that the oxidation process has commenced.

- **Surface Texture:** As the patina forms, you'll notice a slight roughening of the copper surface. Embrace these unique imperfections — they're the canvas upon which the patina masterpiece will unfold.
- **Incremental Darkening:** Over time, the patina deepens. Shades of green, blue, and brown intermingle, creating a captivating mosaic. The gradual darkening is akin to the aging of fine wine — it matures gracefully, gaining complexity.

### GEOGRAPHIC INFLUENCE ON PATINA

- **Humidity and Rainfall — Coastal Areas:** If you reside near the coast, the salty sea air will enhance the oxidation process and speed patina development, resulting in a quicker transformation.
- **Dry Climates:** In arid regions, the patina may evolve more slowly due to reduced humidity. However, intense sunlight can still contribute to color changes.
- **Altitude and Temperature — High Altitudes:** At higher elevations, thinner air allows for faster oxidation. Expect a



more rapid patina formation.

- Cold Climates: Cold temperatures can slow down the process. Copper in frosty locales may take longer to develop its characteristic hues.
- Pollution and Urban Environments — Urban Areas: Urban patinas may exhibit darker tones due to pollution, industrial emissions, and traffic pollutants.
- Rural or Pristine Locations: In cleaner environments, the patina may evolve more naturally, reflecting the purity of the surroundings.

### A Hunter Industries Company


Our mission is to create the most energy-efficient lighting products in the world while maintaining the highest level of quality and reliability. In every instance we will back our innovations with the unwavering support our customers need to succeed.



- Website [fxl.com](https://fxl.com)
- Customer Support +1-[760-744-5240](tel:7607445240)
- Technical Services +1-[760-591-7383](tel:7605917383)

©2024 Hunter Industries Inc. FX Luminaire, the FX Luminaire logo, and other marks are trademarks of Hunter Industries Inc., registered in the U.S. and certain other countries. Please recycle.

## Documents / Resources

	<a href="#">FXLuminaire 3DP Path and Area Lighting Fixtures</a> [pdf] Installation Guide 3DP Path and Area Lighting Fixtures, 3DP, Path and Area Lighting Fixtures, Area Lighting Fixtures, Lighting Fixtures, Fixtures
---	--

## References

- [User Manual](#)

[Manuals+](#), [Privacy Policy](#)

This website is an independent publication and is neither affiliated with nor endorsed by any of the trademark owners. The "Bluetooth®" word mark and logos are registered trademarks owned by Bluetooth SIG, Inc. The "Wi-Fi®" word mark and logos are registered trademarks owned by the Wi-Fi Alliance. Any use of these marks on this website does not imply any affiliation with or endorsement.