

# FX Luminaire SRP-20-RGBW SRP Strip Light Installation Guide

[Home](#) » [FX Luminaire](#) » FX Luminaire SRP-20-RGBW SRP Strip Light Installation Guide 

## FX Luminaire SRP-20-RGBW SRP Strip Light



### Contents

- [1 INCLUDED COMPONENTS](#)
- [2 TOOLS & MATERIALS REQUIRED \(SOLD SEPARATELY\)](#)
- [3 CIRCUITING GUIDELINES](#)
- [4 TRANSFORMERS](#)
- [5 INSTALLATION](#)
- [6 Documents / Resources](#)
  - [6.1 References](#)
- [7 Related Posts](#)

## INCLUDED COMPONENTS

- Jumper Wires 3" (76 mm) and 6" (152 mm)



- U-Spacer



- Clamp



- End Connector



- Pick Tool

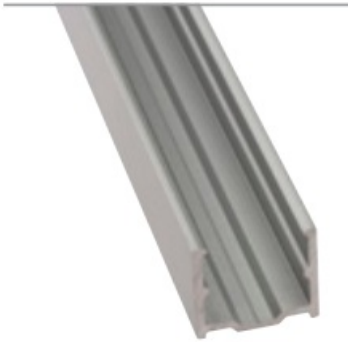


## TOOLS & MATERIALS REQUIRED (SOLD SEPARATELY)

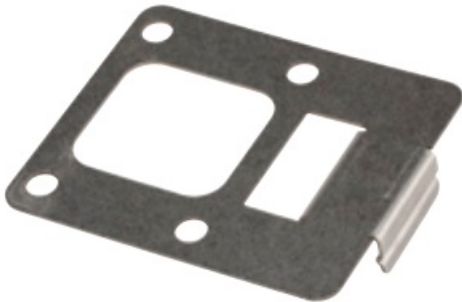
- SRP-CUT Cutter Tool



- SRP-CHN Channel Mount



- SRP-MNT Hardscape Mount



## CIRCUITING GUIDELINES



**SCAN**  
for help



[hunter.info/circuiting](https://hunter.info/circuiting)



SCAN  
for help



[hunter.help/SRP](https://hunter.help/SRP)

## TRANSFORMERS

**Single transformer:** When using one transformer, center the transformer on the wattage load. Minimize all cable runs to reduce voltage drop.

**Multiple transformers:** When using multiple transformers, spread the load evenly across all transformers. Avoid voltage drop by installing the transformers as close to the fixtures as possible.

## INSTALLATION

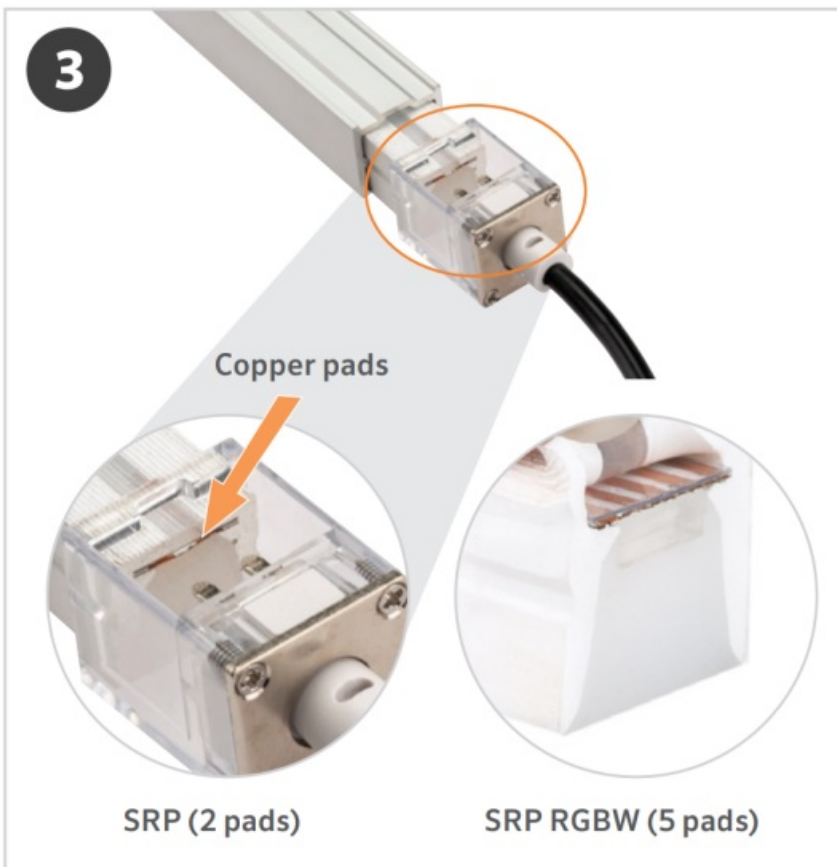
1. Measure the length required for installation.



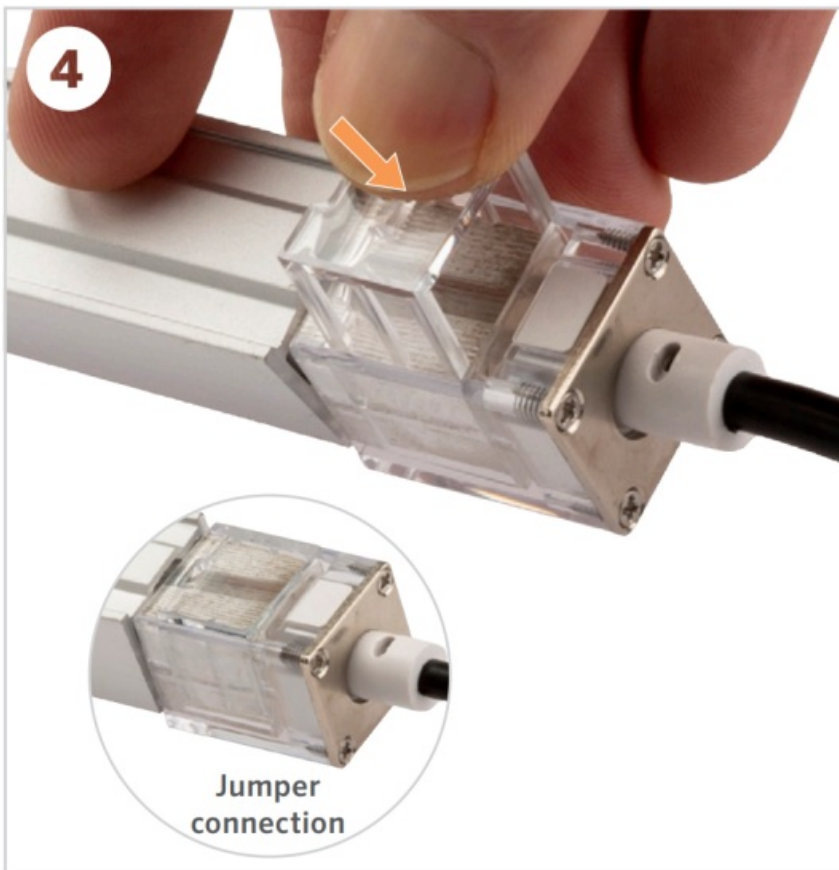
2. Insert the U-Spacer into the end of the strip light.



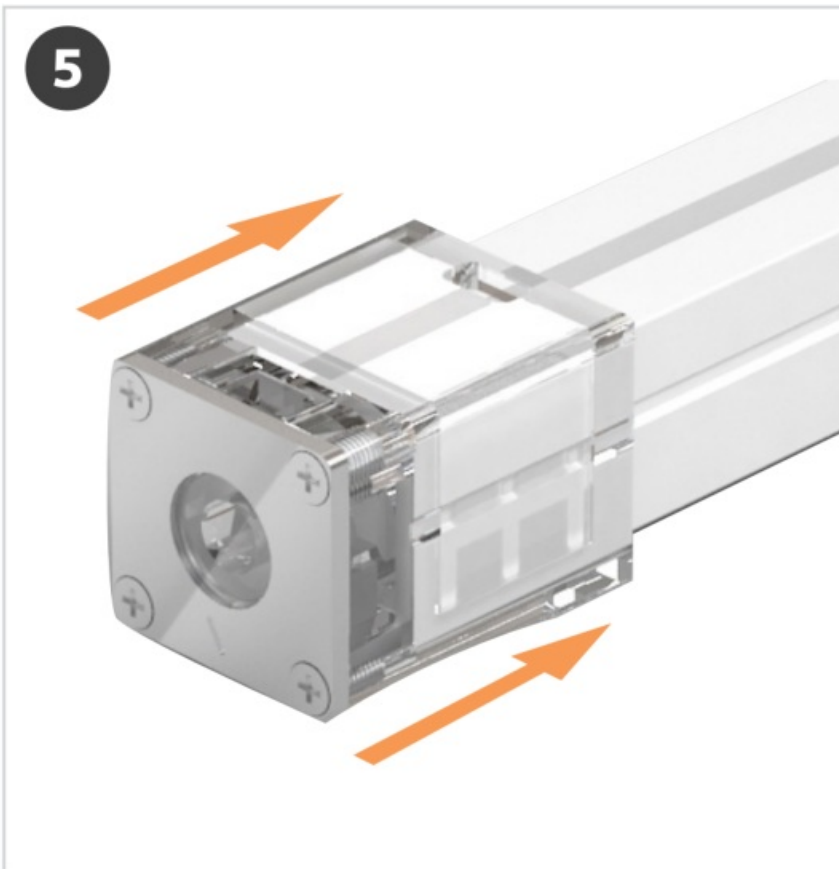
3. Insert a Jumper Wire into the strip light. Ensure jumper pins are installed on top of the copper pads. Use the Pick Tool to expose the pads prior to installing the jumper.



4. Install the clear plastic Clamp onto the jumper connection. Press down firmly. Gently pull the connection to confirm it is secure.



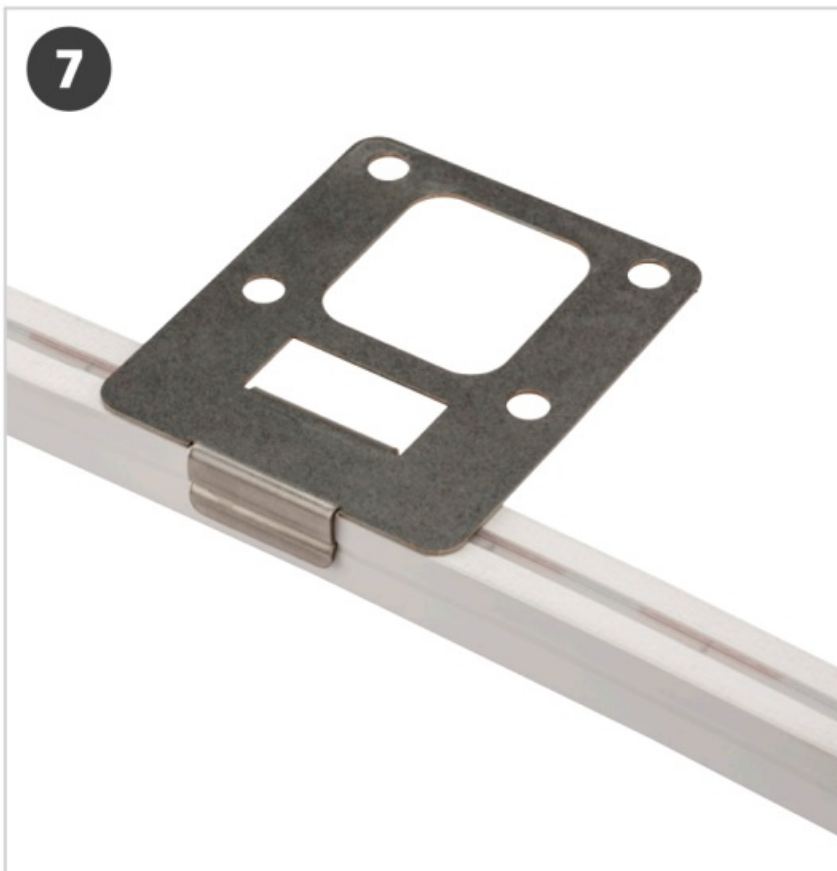
5. Insert the End Connector on the opposite end. Install the Clamp. Press down firmly. Pull the connection area to confirm it is secure.



6. Starting at one end, insert the strip slightly into the aluminum SRP-CHN Channel Mount. (If using the SRP-MNT Hardscape Mount, skip this step and move directly to Step 7.)



7. Press the strip light into the installed SRP-MNT Hardscape Mount. The ideal placement is one mount every 20" (508 mm) or less.



Please read and keep all safety and use instructions. If you have questions, contact your local distributor or visit the online support section at [fxl.com/support](https://fxl.com/support).

**WARNING – To reduce the risk of FIRE OR INJURY TO PERSON:**

- Turn off/unplug and allow to cool before replacing lamp.
- Lamp gets HOT quickly. Contact only switch/plug when turning on.
- Do not touch hot lens, guard, or enclosure.
- Keep lamp away from materials that may burn.
- Do not touch the lamp at any time. Use a soft cloth. Oil from skin may damage lamp.
- Do not operate the luminaire fitting with a missing or damaged shield.

#### **WARNING – Risk of Electric Shock**

- May be installed less than 5' (1.5 m) from a pool, spa, or fountain when used with a UL 379 listed transformer.
- A luminaire shall not use tungsten halogen lamps unless the luminaire is marked for such lamps.
- Supply connection and electrical components are located above ground level, except for secondary cord that is suitable for wet locations.

#### **LOW-VOLTAGE CABLE SHALL:**

- Be protected by routing in close proximity to the luminaire or fitting, or next to a building structure such as a house or deck.
- Not be buried except for a maximum 6" (152 mm) in order to connect to the main low voltage cable.
- Have the length cut off so that it is connected to a connector within 6" (152 mm) from a building structure, a luminaire, or fitting.



This product contains a light source of energy efficiency class G.



**STANDARD**

**FXLuminaire**

#### **Documents / Resources**



[FX Luminaire SRP-20-RGBW SRP Strip Light](#) [pdf] Installation Guide  
SRP-20-RGBW, SRP-20-RGBW SRP Strip Light, SRP-20-RGBW, SRP Strip Light, Strip Light, Light

#### **References**

- [User Manual](#)

[Manuals+](#), [Privacy Policy](#)

This website is an independent publication and is neither affiliated with nor endorsed by any of the trademark owners. The "Bluetooth®" word mark and logos are registered trademarks owned by Bluetooth SIG, Inc. The "Wi-Fi®" word mark and logos are registered trademarks owned by the Wi-Fi Alliance. Any use of these marks on this website does not imply any affiliation with or endorsement.